



NAMASTE - BENETTI

Builder: [Benetti](#)

LOA: 121' 0" (36.88 m)

Year Built: 2013

Beam: 26' 0" (8.13 m)

Model: N/A

Min Draft: 20' 9" (6.33 m)

Price: \$8,750,000 USD Subject to change.

Max Draft: 24' 11" (7.58 m)

[See full listing on our website](#)

Location: N/A, Saint Martin

Cruising Speed: 11 Knots (12.66 MPH)

Max Speed: 15.20 Knots (17.49 MPH)

If you would like to buy a yacht **NAMASTE - BENETTI** or would like help answering any questions concerning purchasing, selling, or chartering a yacht, please call **+1(954)274-4435** or click here on <https://shestakovyachtsales.com>

TABLE OF CONTENTS

OVERVIEW	3
SPECIFICATIONS	4
Basic Information	4
Dimensions	4
Speed, Capacities and Weight	4
Accommodations	5
Hull and Deck Information	5
Engine Information	5
GALLERY	6
DETAILED DESCRIPTION	16
CONTACTS	25

OVERVIEW

NAMASTE 121' (36.89m), a 2013 Benetti BC-130 motor yacht, unfolds with a distinctive layout and bespoke American cherry joinery, its timeless interior gently enlivened by refined gilt accents. An extended sundeck, crowned by a retractable sunroof, provides generous space for open air relaxation and sophisticated entertaining. Accommodating up to ten guests, she offers a main deck owner's suite alongside four warmly appointed lower deck staterooms, each graced with Italian marble, together expressing the calm poise of a luxury superyacht and the refined efficiency of a premium motor yacht.

SPECIFICATIONS

Basic Information

Category:
Motor yachts

Year Built:
2013

Model Year:
2013

Country:
Saint Martin

Dimensions

LOA:
121' 0" (36.88 m)

Beam:
26' 0" (8.13 m)

Min Draft:
20' 9" (6.33 m)

Max Draft:
24' 11" (7.58 m)

Speed, Capacities and Weight

Cruise Speed:
11 Knots (12.66 MPH)

Water Capacity:
2103 Gallons

Max Speed:
15.20 Knots (17.49 MPH)

Fuel Capacity:
10990 Gallons

Gross Tonnage:
298 Pounds

Accommodations

Total Heads:

7

Crew Cabin:

4

Hull and Deck Information

Hull Material:

Fiberglass and Plastic Yachts

Hull Designer:

N/A

Deck Material:

Fiberglass

Interior Designer:

Zuretti Interior Designers (France)

Hull Configuration:

N/A

Engine Information

Engines:

2

Engine Type:

Inboard

Manufacturer:

MTU

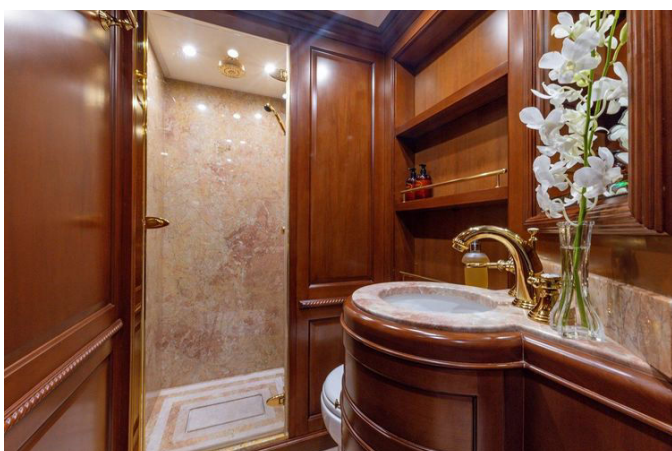
Fuel Type:

Diesel

GALLERY







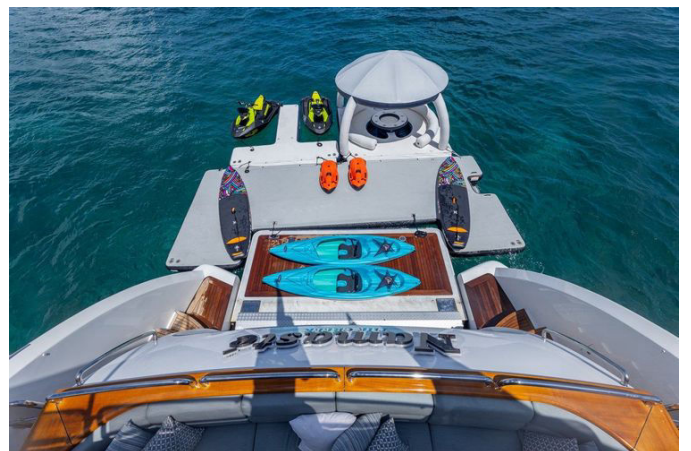


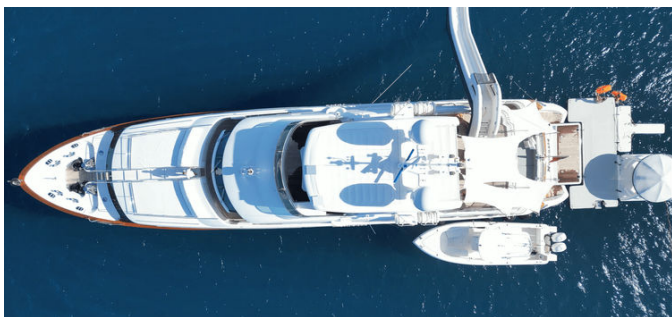












DETAILED DESCRIPTION

Construction

Benetti Yachts stands as a pioneer of the modern superyacht era, with a legacy dating to 1961, nearly three hundred yachts delivered, and more than 300,000 square meters of production across six Italian shipyards. As part of Azimut Benetti S.P.A. and guided by a client-centric philosophy, the shipyard marries technical precision with innovation to create yachts that are effortlessly functional while radiating style and comfort. NAMASTE embodies this ethos with a robust fiberglass hull and a GRP superstructure; during construction, her sun deck was lengthened by 4.92 feet (1.5 meters), expanding open-air living, improving flow between lounging and dining, and casting welcome shade over the bridge aft deck dining area.

Dimensions

With purposeful proportions and generous capacities, NAMASTE measures 121.00 feet (36.89 meters) length overall and 103.61 feet (31.58 meters) at the waterline, with a molded beam of 26.67 feet (8.13 meters). Her draft ranges from a minimum of 6.43 feet (1.96 meters) to a maximum of 7.07 feet (2.31 meters), and she registers 298 gross tons with 259 displacement tons.

Range-ready tankage includes 10,990 US gallons (41,601 liters) of fuel, 2,103 US gallons (7,964 liters) of freshwater, a 713 US gallon (2,699 liter) holding tank, plus 144 US gallons (545 liters) each for lube oil and waste oil.

Machinery

Power is delivered by two MTU 12V2000 M72 main engines on ZF 300 gearboxes with inboard drive, swinging five-blade Nibril propellers sized 1,400

mm x 1,300 mm on 110 mm stainless steel shafts, with bronze "I" struts measuring 40 inches by 17 inches. The port engine, serial 535 108 655, is rated at 1,468 hp with 5,620 hours as of October 21, 2024; the starboard engine, serial 535 108 656, is rated at 1,468 hp with 5,624 hours as of the same date. Her performance profile is efficient and predictable: at slow speed, 700 rpm at 21% load burns 3 gallons per hour per engine for 5.3 knots; at cruise settings, 1,400 rpm at 47% load burns 20 gph per engine for 10.8 knots, 1,600 rpm at 51% load burns 30 gph for 12.1 knots, 1,800 rpm at 57% load burns 38 gph for 13.1 knots, and 2,050 rpm at 73% load burns 55 gph for 14.4 knots; at full, 2,298 rpm at 98% load burns 73 gph for an average 15.1 knots measured on reciprocal runs.

Electrical generation comes from two Northern Lights 90 kW, 400 volt, 50 Hz units. The port generator, serial 0642 48553, runs 220/380 volts at 1,500 rpm; hours as of October 21, 2024 total 14,996, with a top end overhaul in May 2023 at 13,400 hours and 1,596 hours since; additional records note 1,084 total hours since top end as of 05/26/2023. The starboard generator, serial 0095576 0820, runs 220/380 volts at 1,500 rpm; hours as of October 21, 2024 total 15,092, with a top end overhaul in May 2023 at 13,719 hours and 1,373 hours since; additional records note 963 total hours since top end as of 05/26/2023. Typical generator fuel consumption is 2.6 gph (10 L/h).

Transmissions are ZF model 3351 with a 4,000:1 reduction ratio. Shore power flexibility includes one 480 volt three phase input or two 240 volt three phase/multi input 100 amp feeds, supported by 24 volt batteries, two A/SEA shore power transformer/AC converter systems, and lighting on 24 volt DC and 110/220 volt AC. Shore receptacles comprise two 250 volt 100 amp three phase inlets and one 480 volt 100 amp three phase inlet on a powered reel. Black water is treated via a Techmar Echomar 16 treatment system.

Air conditioning is a CUCG ANSI/AHRI 590 plant with three compressors, new in

December 2022. Critical auxiliary systems include Naiad Dynamics Zero Speed model 525 stabilizers with 36 inch by 98 inch hydraulic fins; a Naiad VT60 hydraulic bow thruster with a seven blade propeller in a 20 inch tube; BCS/Twin Disc steering; an Alpha Laval fuel polishing system with Alpha Laval M IB 303 S13 separators and Racors; an Ecomar 16 sewage system; twin Gianneschi freshwater pumps; and one IDROMAR MC95 watermaker rated at 1,400 GPD.

Communication, navigation & entertainment systems

Connectivity is comprehensive, with two marine STARLink systems delivering primary broadband while a KVH V11 SAT com remains onboard but inactive due to STARLink. Shipwide communications include a Thompson telephone system and intercom, a Sailor 6,301 SSB, two fixed Sailor 6,222 VHF's, six Sailor handheld VHF's, a Pepwave cellular system, and robust internal coordination via Thompson intercoms.

The navigation suite is equally authoritative: a new 2023 Furuno 72 mile radar pairs with a Plath Navigator X Mk 2 gyrocompass and a C. Plath Jupiter magnetic compass, governed by a Plath Navipilot 4,000 autopilot. Depth is read by two Furuno sounders, position by two Furuno GPS units, and weather by a Navtex 700, while a Team Italia "BEST" ship's computer harmonizes data and a Noble Tech Time Zero laser plotter streamlines route planning. Wind and speed logging are handled by Furuno; Navtex duties by a Furuno NX 700; AIS is a Furuno FA 150 Class A; emergency beacons include two EPIRBs with Sailor and McMurdo batteries.

Entertainment is thoughtfully integrated. In the master stateroom, a SAMSUNG TV on a powered lift pairs with APPLE TV's; guest staterooms feature SAMSUNG and APPLE TV's; the salon adds a SAMSUNG TV on a lift, SONY DVD, and APPLE TV; the skylounge boasts a 75" SAMSUNG with APPLE TV's and SONY DVD; the

captain's cabin carries a SAMSUNG TV; the crew lounge, upper aft deck, and throughout the vessel benefit from SAMSUNG and APPLE TVs and a Crestron AV system with remote controls. Audio is anchored by Marantz and SONY: the master has Marantz and SONY AV/tuner receivers; guest staterooms, skylounge, sun deck, and crew lounge have SONY AV/tuner receivers; the salon features a Marantz AV/tuner receiver. Satellite TV is via KVH Tracvision, and the crew mess is monitored by CCTV with four cameras and a dedicated monitor. Additional electronics further elevate redundancy and awareness: Northrup Grumman C Plath compass; Sperry Navipilot 4000 autopilot; Furuno FA 150 Class A AIS; four Hatteland monitors for the GPS suite; two Furuno Navnet chart plotters plus Timezero within the GPS system; VHF coverage via two Sailor 6222 and 6248 sets, with a Sailor 6,204 in the crew mess; MF/HF by Sailor 6,301; handheld VHF's by Sailor and Icom; Inmarsat C via Sailor alongside STARLink; a Vingtor hailer within the intercom system; Sailor 6,006 message terminal; fish finder functions embedded in each Furuno Navnet; depth and speed also mirrored on two Furuno RD 33 displays, which include seawater temperature; computer details forthcoming; HP all in one for fax/printing; rudder indicators at the helm and at an emergency backup steering station; a Cantalupi Ship monitoring system in the electrical control room; and a FLIR thermal camera.

Galley & laundry equipment

The chef's domain is newly refreshed: a Wolf 30 inch wall oven (October 2023) complements a Wolf 24 inch steam oven (October 2023), while a Wolf 36 inch induction hob with five burners (October 2023) anchors the cooking line. Cold storage is by Frigomar in stainless steel; cleanup is effortless with a Miele dishwasher and an Insinkerator disposal beneath the sink; beverages chill in an Isotherm Cruise 160; and ice flows from a Kismile AL Z5883F 36 inch ice maker. On deck, alfresco service shines with an electric Miele four burner BBQ

and a Frigomar stainless steel refrigeration/ice unit replaced in June 2023. The sky lounge is supported by Isotherm refrigerators and an Isotherm icemaker, while the salon bar features Isotherm refrigeration and an additional Isotherm icemaker. The crew galley is practically equipped with a refrigerator and a microwave. Laundry is ship shape with two Miele washers and two Miele dryers to keep linens crisp and rotation flawless.

Tenders & toys

While NAMASTE sails light without a tender or dive gear, she delivers playful versatility with two 2023 Sea Doo Spark jet skis, two kayaks, two paddle boards, an inflatable dock purpose built for the jet skis, a floating bar for convivial afternoons at anchor, a dramatic three level slide for splash down thrills, and two Sea Bobs for effortless underwater gliding.

Deck equipment

Ground tackle is engineered for authority with two Onn Italia MOD 106 5.5 kW vertical electric anchor windlasses and two Onn Italia MOD 107 22 kW electric capstans on the aft deck. Heavy lift handling is enabled by an Atlas 1,600 lb powered skid system with electric winches, while stainless steel Manson anchors lead two traditional style 150 kg stainless anchors, each on 400 feet of chain; the chain locker carries galvanized chain in 6.5 shackles. Boat cranes and davits are not fitted beyond the Atlas 1,600 lb arrangement. Boarding is gracious via a Pin Craft Gemini passerelle in stainless steel with teak inlay. The swim platform, sun deck, main deck, and bridge deck are all handsomely finished in teak.

Security, fire fighting & safety equipment

Security is anchored by a Panasonic CCTV system with Panasonic cameras and two dedicated video monitors, all overseen alongside a Siren 3 PRO security monitoring system commissioned in December 2023. Fire protection is equally robust, centered on an Auto Prime fire control and alarm system, portable fire extinguishers throughout, and an auxiliary 208 volt fire pump with manifold and remote pickups, hydrants, hoses, and nozzles forward and aft, plus a diesel crash pump for ultimate redundancy. Safety inventory is complete with four Zodiac ten man life rafts, four life rings with floating throw lines and two additional rings equipped with MOB light and smoke, two orange smoke flares, and MSOS medical equipment.

Accommodations

Throughout NAMASTE, including the salon, the finish is a warm American cherry accented by decorative rope carved details and crisp moldings, with Cantalupi LED lighting expressed as both gilded sconces and overheads. A discreet dumbwaiter links the pantry to all three decks, so canapés and lunches glide up to the sun deck as effortlessly as service in a grand hotel.

On the main deck, the salon invites with cream silk damask seating set aglow by crystal lamps, leading to a dining room where full height windows flood the space with daylight over a burlled table seating ten. A glass and cherry five door credenza completes the tableau with elegant stowage for china and silver, while a built in bar, flanked by bookshelves, welcomes guests aft beside a sweeping curved automatic door.

Up on the bridge deck, blue leather and cherry set a commanding tone for worldwide voyaging, where modern navigation and communication systems are arrayed with purpose. The captain's cabin resides here with an ensuite clad in marble and a generous shower. The sky lounge, just aft, is a sanctuary of

overstuffed couches and intimate tables framing panoramic views; a large SMART TV and Crestron A/V bring cinema to sea. A graceful curved automatic sliding door opens to the deck, and forward, a day head with a marble shower adds convenience. Outdoors, an alfresco table seats twelve beneath the sky, with a cozy nook opposite for breakfast, casual dining, or cocktails; further aft, a vast day bed under sunshades beckons for sunbathing, repose, or movie nights on the outdoor TV.

The sun deck, extended aft by 1.5 meters during construction, rivals the footprint of a 50 meter yacht. Forward is a welcoming seating area, followed by a generous round Jacuzzi with soothing jets and mood lighting; one touch retracts the sunroof above for stargazing by night. To port and starboard aft, a sociable wet bar provides ample seating, opposite a Miele BBQ for open air gastronomy. The Jacuzzi accommodates up to six guests, while sail sunshades aft ensure cool comfort even at noon.

The main deck master stateroom is a private haven with a king sized bed, a sweeping 180 degree view, and powered curtains. Dual ensuites pamper—his with a rain shower, hers with a tub—complemented by a separate vanity area, a walk in closet, abundant storage, and a private in cabin office. On the lower deck, four guest staterooms encircle a foyer with extra storage, each thoughtfully equipped with audio/visual systems. Two VIP queen staterooms to port and starboard feature large windows and marble ensuites with shower windows, plus vanities, heads, and bidets. Two twin guest staterooms, also port and starboard, are well silenced and window blessed, with marble ensuites including showers with windows, vanities, heads, and bidets. Crew arrangements are professional: the captain's cabin on the bridge deck carries an ensuite head and shower, while below are three crew cabins, each with two bunk beds, served by two heads.

Upgrades

In 2025, NAMASTE underwent a focused two and a half month yard period in Palm Beach, Florida, from August to November, with over \$600,000 invested. Class and flag compliance were brought fully current with a yearly RINA Class Survey, a yearly RINA dry bottom survey, and a yearly Cayman Flag survey. Safety and compliance were refreshed with LSA equipment service, replenishment of FFE and the medical kit, and liferafts redone. Mechanically, both generators received their 2,000 hour service; stabilizers were rebuilt; shafts and cutlass bearings were serviced; shafts and props underwent dye penetrant checks; the anchor windlass and the emergency fire pump were serviced; and the watermakers were serviced. The stern garage door was rebuilt for \$140,000. HVAC and plumbing improvements included an AC chiller replacement, AC duct cleaning, and a galley fridge pump repair. Electrical and electronics welcomed a new bridge deck aft TV and a replacement galley extractor fan motor. Interior refinements brought a new galley/stew pantry floor, a new galley stove top, seven new crew mattresses, new crew settee cushions and four lounge covers, teak work on the garage door, and a thorough cleaning and repainting of the garage. Exterior cosmetics saw the entire boat waxed in a two step process, a complete bottom job, PropSpeed applied, pilothouse windows re-caulked, new fender covers and hooks, and a new freezer on the flybridge.

In 2023, surveys and certifications set the tone for reliability: a five year Class Survey was completed in November 2023; the Annual Fire System Certification was obtained in October 2023; and liferafts were recertified in October 2023. Main engine and generator work in 2023 was substantial: both main engines completed their 5,000 hour service with injector replacements, turbo repairs, high pressure fuel pump repairs, and fuel injection pump servicing totaling \$56,968 in July 2023; both Northern Lights generators received top end overhauls by Mendol Marine for \$78,519 in May 2023. Running gear and

systems were renewed with running gear and stabilizers dropped and serviced by Highseas (\$61,183, October 2023); windlass and capstans removed and rebuilt (\$50,859, October 2023); new cutlass bearings installed (October 2023); battery capacity and motor isolation tests performed with electrical system repairs and sea service (\$14,970, October 2023); and all 35 underwater skin valves removed and pressure tested by Engineered Yacht Solutions (September 2023). Tank and system upgrades included blasting and recoating the freshwater tank (\$27,190, October 2023) and upgrading the wastewater treatment system (\$44,780, October 2023). Electronics and safety were elevated with new radars plus emergency and bilge alarms installed (\$74,966, October 2023) and a new Siren 3 PRO security monitoring system (\$6,420, December 2023). Interior and exterior received new exterior cushions (October 2023), new carpet runners (\$32,370, October 2023), a custom bow sunbathing area (\$18,200, October 2023), and fresh bottom paint (October 2023). Galley enhancements featured two new ovens (\$9,200, October 2023), a new five burner induction stove (\$3,250, October 2023), and additional galley equipment (October 2023).

CONTACTS

Shestakov Yacht Sales is a brokerage company specializing in the sale and service of yachts worldwide. The company offers services for buying and selling both new and used motor yachts, sailing vessels, and luxury superyachts. They also provide yacht registration, insurance, technical maintenance, crew selection, and charter organization services across the U.S., Canada, Latin America, the Caribbean, and the Bahamas.

The founder and lead broker of the company is Andrey Shestakov, a licensed and certified expert with extensive experience in marine engineering and shipbuilding.

The company has an extensive network of partnerships with major yacht manufacturers worldwide and provides services in multiple languages, including Russian, Ukrainian, Spanish, and English. The office is in Dania Beach, Florida, USA.

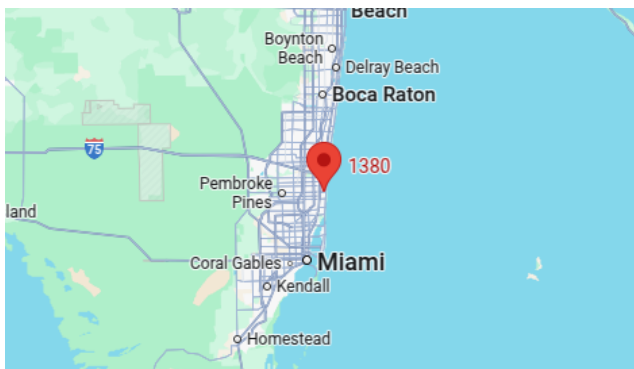
For more information and to view available yachts, you can visit the company's official website: <https://shestakovyachtsales.com>

Contact details

Phone: +1(954)274-4435

Email: andrey@shestakovyachtsales.com

Address



1380 Weeping Willow Way, Hollywood,
Florida 33019