



SHESTAKOV

Yacht Sales

ONE ZERO - NUMARINE



Builder: [Numarine](#)

LOA: 121' 0" (36.88 m)

Year Built: 2024

Beam: 26' 0" (7.98 m)

Model: 37XP

Max Draft: 26' 10" (8.17 m)

Price: \$18,027,657.91 USD Subject to change.

Cruising Speed: 12 Knots (13.81 MPH)

[See full listing on our website](#)

Location: Bodrum, Turkey

Max Speed: 15 Knots (17.26 MPH)

If you would like to buy a yacht **ONE ZERO - NUMARINE** or would like help answering any questions concerning purchasing, selling, or chartering a yacht, please call **+1(954)274-4435** or click here on <https://shestakovyachtsales.com>

TABLE OF CONTENTS

OVERVIEW	3
SPECIFICATIONS	4
Basic Information	4
Dimensions	4
Speed, Capacities and Weight	4
Accommodations	5
Hull and Deck Information	5
Engine Information	5
GALLERY	6
DETAILED DESCRIPTION	18
CONTACTS	32

OVERVIEW

ONE ZERO arrives with a sumptuous, bespoke interior by Rezzan Benardete Interiors; offered fully turnkey with all furniture and artwork included, she is ready for immediate handover to her next owner. Guest accommodation for 12 is spread across six elegantly appointed cabins, highlighted by a spacious on deck master finished in bronze dragon quartzite. Crew quarters accommodate up to eight, featuring a captain's cabin on the upper deck, a dedicated crew mess and a generous laundry fitted with six full size washer/dryers. The beach club provides an air conditioned lounge, a convenient day head and a full sauna, while the sundeck is topped by a skylight with adjustable blades and arranged to host a well equipped bar, alfresco dining and a secondary helm. Just under 350 gross tons, this contemporary superyacht is equipped with a 3 ton davit and delivers a 4,000 nm cruising range, all supported by a full manufacturer's warranty.

SPECIFICATIONS

Basic Information

Model Year:
2024

Country:
Turkey

Year Built:
2024

Dimensions

LOA:
121' 0" (36.88 m)

Max Draft:
26' 10" (8.17 m)

Beam:
26' 0" (7.98 m)

Speed, Capacities and Weight

Cruise Speed:
12 Knots (13.81 MPH)

Water Capacity:
793 Gallons

Max Speed:
15 Knots (17.26 MPH)

Fuel Capacity:
13474 Gallons

Gross Tonnage:
345 Pounds

Accommodations

Total Heads:

9

Crew Cabin:

4

Hull and Deck Information

Hull Material:

Steel Yachts

Hull Designer:

N/A

Deck Material:

Steel

Interior Designer:

N/A

Hull Configuration:

N/A

Engine Information

Engines:

2

Engine Type:

Inboard

Manufacturer:

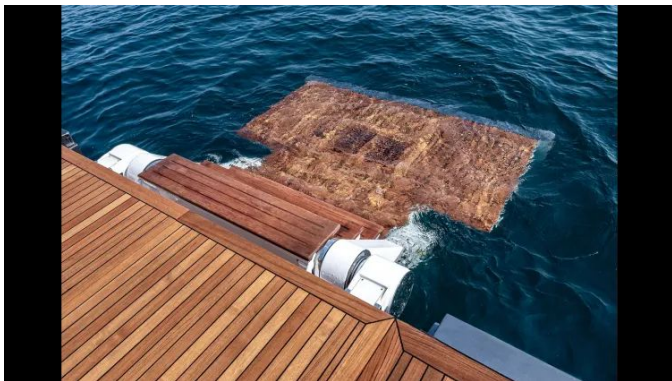
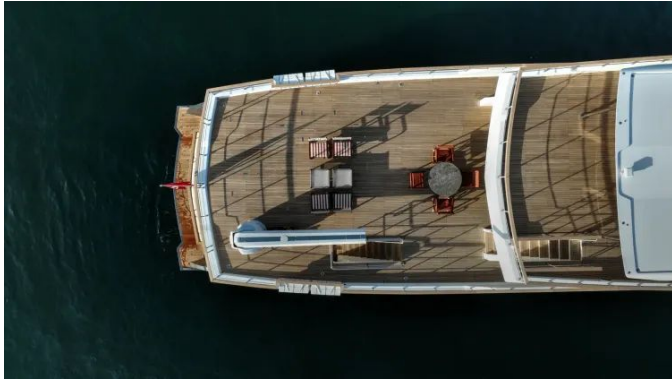
MAN

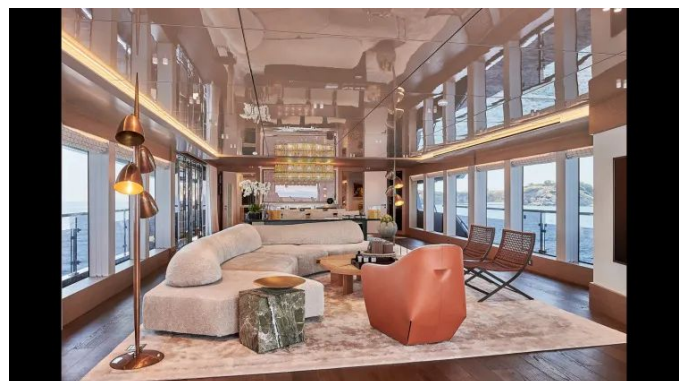
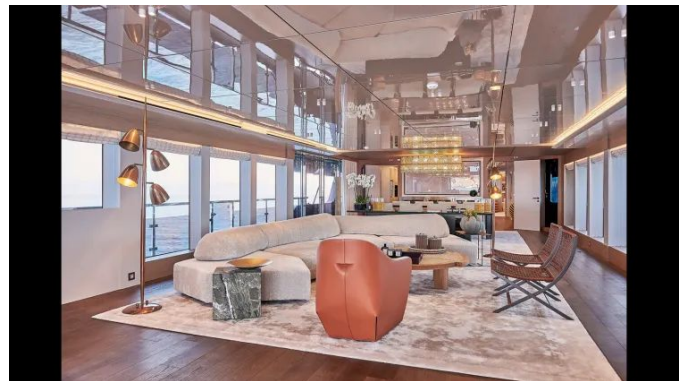
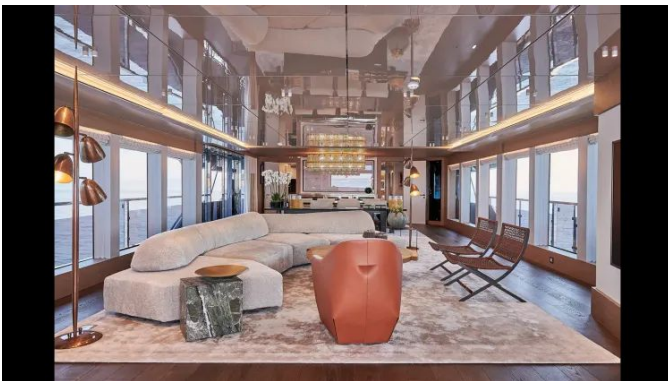
Fuel Type:

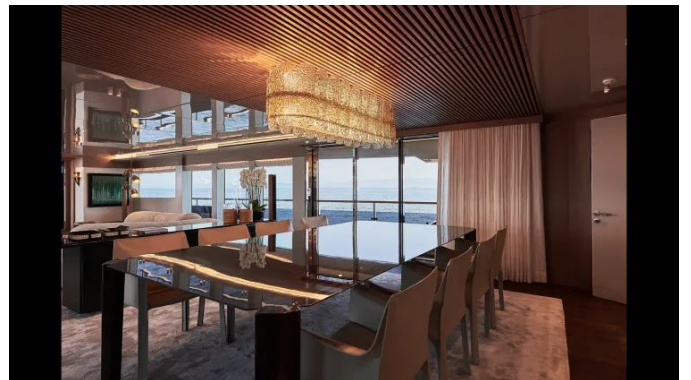
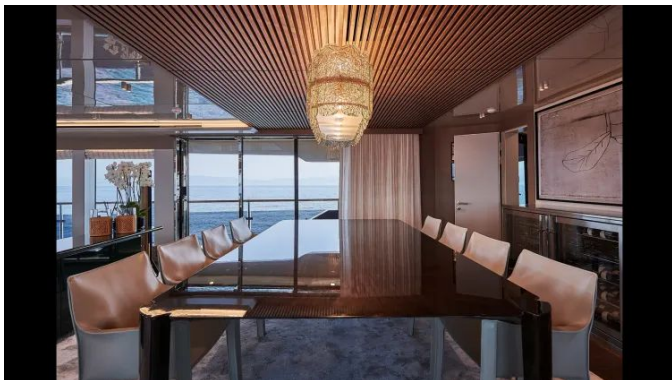
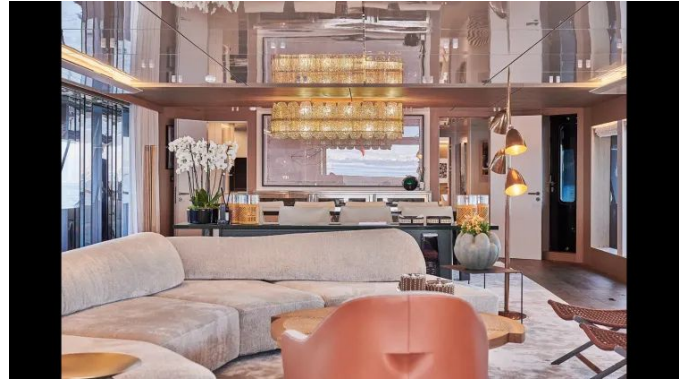
Diesel

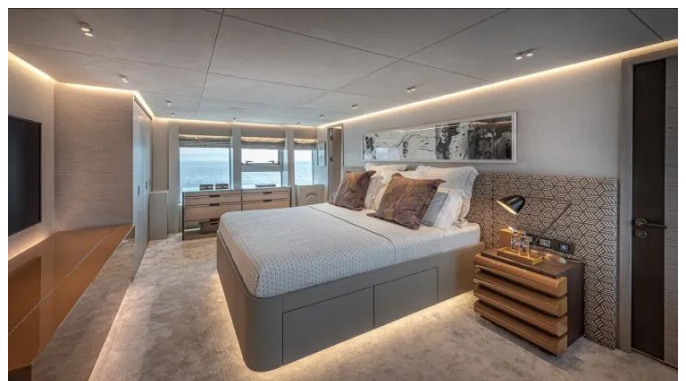
GALLERY

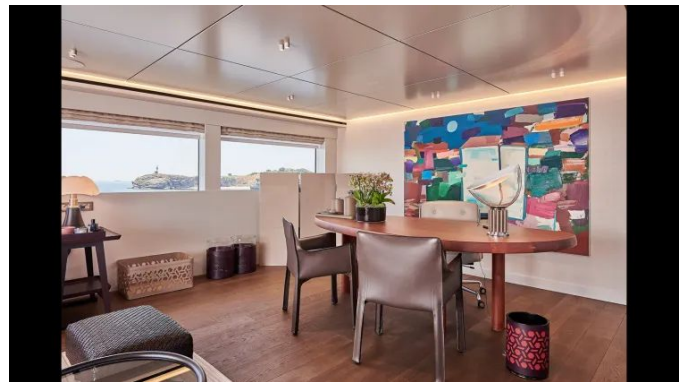
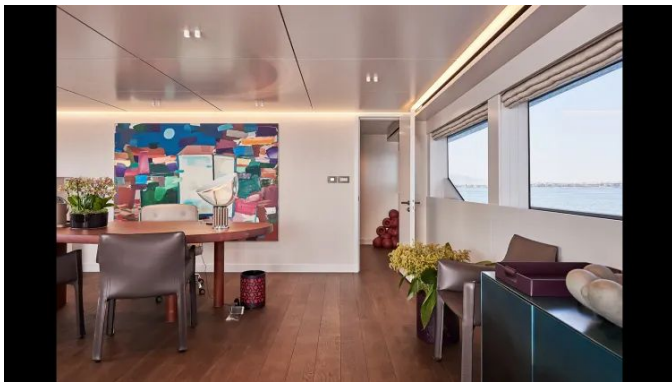
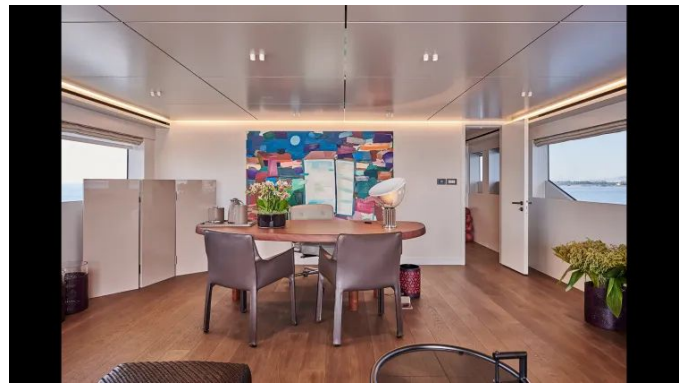








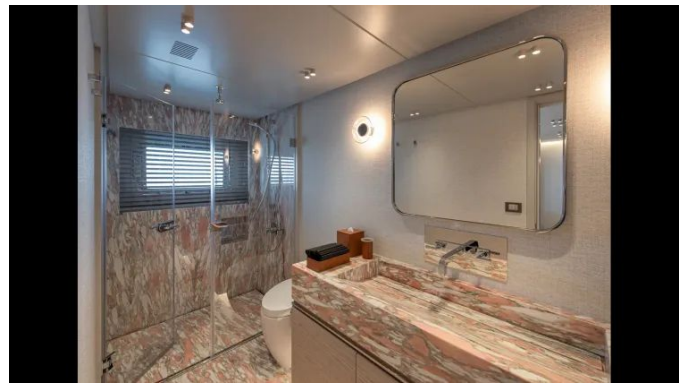
















DETAILED DESCRIPTION

Principal features

Designed to command the seas with calm assurance, this yacht is equipped with electric fin stabilization and powered by three 55 kW generators operating with Auto Sync. The electrical architecture comprises a full 24 V DC and 380/220 V AC distribution, augmented by 380 V AC shore power with automatic reclaim and dedicated battery chargers. Precise handling is provided by electric bow and stern thrusters, while anchoring and mooring are handled by an electric twin anchor windlass and twin stern capstan winches. Systems aboard are specified for autonomy and dependability, including two desalinators, a twin pump hot-and-cold pressurized water system with shore connection, a toilet system with holding tank, a fuel polishing unit, automatic bilge pumps, and an automatic fire extinguishing system protecting the engine room. Operational oversight is streamlined through a Yacht Monitoring System, six cameras with a monitor displayed in both the wheelhouse and crew mess, and a remote-controlled searchlight. Safety provisions include twin ten-man life rafts, and the vessel is constructed to RINA C + Hull Mach, Y Unrestricted Navigation standards.

Interior comfort is uncompromising, with full air conditioning and heating supplied by a central chiller with fresh-air make-up and individually controlled fan coils for each cabin. Leisure amenities range from a hot-and-cold swimming shower on the stern to a fully appointed flybridge wetbar featuring a sink, hot and cold water, an electric barbecue, an icemaker and a refrigerator, complemented by a cushioned sunbed on the flybridge. Entertainment is comprehensive, with flatscreen televisions in every guest cabin, the captain's cabin and the crew mess—each fitted with SAT connection—alongside a 75-inch television in the salon and a 65-inch set in the

owner's cabin. A satellite TV system with an 85 cm dish guarantees worldwide reception, and a full telephone system serves all cabins, crew quarters and the pilothouse. Teak decking graces the bathing platform and steps, side decks and foredeck, the flybridge stairway, and both the flybridge and cockpit floors, while six underwater transom lights and durable antifouling complete the exterior finish.

Navigation and communications are integrated into a Raymarine suite offering electronic depth and speed displays, autopilot, VHF with AIS, two radars and a plotter, supported by a Sailor 6110 Mini-C GMDSS and Navtex NX300 or equivalent. Practical operations are made effortless with a fully fitted crew cabin and a tender-handling arrangement featuring a three thousand kg capacity tender crane, enabling efficient launch and recovery wherever your voyage takes you.

Salon

The salon marries artisan craftsmanship with a contemporary aesthetic, appointed with salon buffets from RBD and an Acerbis Sheraton console at the dashboard, all beneath a ceiling finished in Palazzo high gloss lacquer and lit by a specially designed ceiling spotlight. Underfoot Lantana Parke Hakwood Harmony provides a warm base, while a single-piece carpet spans the saloon floor, flowing uninterrupted beneath the sofa and the dining table, and a Nova Perde electric cabin curtain offers instant privacy. Seating has been carefully selected for comfort and style, featuring one Edra On the Rocks and one Walter Knoll Isanka armchair, joined by a further single Walter Knoll Isanka and two Flexform Peter COD chairs, while the dining area is anchored by an Agapecasa Eros Tavolo Ovale in Color Verde Alpi paired with eight Cassina CAB Chair Mat Ivory. Occasional surfaces include one B&B Italia Tobiishi Rectangular Low Table, one Cassina Rio and one Walter Knoll Oki side table, with practical luxuries such as a wine cooler, one aft sliding door and two

Starboard Seat Side Floor Lamps, and entertainment provided by one 75" Samsung 4K Smart TV 2021.

Main corridor/lobby

A lacquered side wall from the master dressing room extends along the corridor as a sleek architectural element, while Harmony parquet steps and floors by Lantana Parke Hakwood deliver a seamless, slightly elevated surface beneath the feet. Light and privacy are precisely regulated by a gray Jalousie electric curtain, and the atmosphere is perfected by a purpose-designed ceiling spotlight. A single B&B Italia seating piece provides an elegant perch, completing the composition with quiet sophistication.

Main deck day head

On the main deck, the day head features a marble sink set upon a matching marble counter, paired with a Hansgrohe faucet that marries refined style with dependable performance. A stainless steel lower cabinet beneath the sink provides sleek, durable storage, while a specially designed ceiling spotlight offers precisely directed illumination. The arrangement is completed by a Tecma toilet, rounding out this carefully considered and elegant space.

Galley

Designed for dedicated culinary artistry, the galley is equipped with precision Miele cooking appliances—a Miele hob and a Miele oven—while a Miele range hood ensures pristine air and a Miele dishwasher handles post-service cleanup. A microwave oven adds practicality, two Artema Lavabo sinks accompanied by a Franke Fox Pro big sink faucet provide refined and efficient workspace, and ample chilled storage is delivered by a Subzero refrigerator

and a Subzero freezer.

Owner cabin

A refined headboard by RBD establishes a quietly sumptuous atmosphere in the owner cabin, where a Power beige carpet cushions each step and amplifies the room's tranquil mood. Sculptural seating provides both style and comfort with one Pmobler Circle Armchair and one Maxalto Febo armchair placed in harmony around one Maxalto Sidus desk, while a matching Maxalto Lithos side unit offers elegant, practical storage. Nighttime needs are met with two Acerbis Storet bedside units, and the lighting scheme has been meticulously considered: a bespoke ceiling spotlight sculpts the space, one Martinelli Luce Minipipistrello is positioned above the makeup table, and two Martinelli Luce Minipipistrello luminaires cast focused light over the study table.

Entertainment and everyday convenience are discreetly integrated via a Ludwig TV unit housing one Samsung LED 4K Smart TV, 65-inch, alongside one Vitrifrigo fridge for refreshments. Privacy and ambiance are effortlessly adjusted with a Nova Perde electric cabin curtain, complemented by an RB fabric curtain, together completing a sanctuary of understated luxury.

Upper salon

A door from the corridor opens into an elegant upper salon centred on a study desk that is flanked port and starboard by buffets by RBD, while a sliding-door cabinet on the entrance side provides discreet storage. Light and privacy are controlled with an electric cabin curtain by Nova Perde paired with a fabric curtain by RB. Seating is composed of two Maxalto Otium armchairs, two Roda Orson puffs, four Roda Orson foldable lounge chairs, one Vitra lobby chair and four Cassina Cab armchairs, arranged around a Classicon table and a B&B Italia Spool low table, complemented by two Maxalto Recipe side units and a

single table lamp. Additional storage is provided by a Decastelli Maria four-door sideboard, and entertainment and refreshments are catered for with a 65-inch Samsung QLED Smart TV, a Vitrifrigo ice maker, a Vitrifrigo fridge and a second ice maker. The atmosphere is refined by a bespoke ceiling spotlight, and the Lantana Parke Hakwood parquet underfoot is softened by a B&B Twist Hali area rug.

Upper day head

A bespoke ceiling spotlight has been integrated to cast a precisely calibrated radiance across the upper day head, drawing attention to the marble basin appointed with Hansgrophe sink faucets. Fine touches such as a Bochhi toilet paper holder and a Tecma toilet marry elevated visual refinement with the everyday functionality expected aboard.

Wheelhouse

The wheelhouse is appointed with two additional 19-inch Raymarine screens that heighten navigation clarity and expand situational awareness, complemented by a dedicated map reading lamp for meticulous passage planning. Underfoot, Lantana Parke Hakwood Harmony parquet flooring introduces a refined, warm aesthetic, while the Standard Rohs captain seating provides supportive ergonomics and responsive control to sustain confident command on extended passages.

Captain cabin & head

Every element in the captain's private cabin is curated for refinement: two Marine Spiralli reading lamps provide adjustable, focused illumination while a 32-inch Samsung TV delivers crisp entertainment above floors finished in

Lantana Parke Hakwood Harmony parquet, further enriched by a teak floor beneath. Daily convenience is provided by one Vitrifrigo fridge, neatly integrated for easy access to refreshments. The adjacent head continues the sophisticated palette with a Corian Cameo White counter that contrasts with Corian Deep Espresso shower floors, Artema fixtures for both the sink and shower offering precise control, and a dependable Team toilet completing the suite.

Port aft VIP stateroom & head

The port aft VIP suite is centered on a custom headboard by RBD and features a dedicated makeup table paired with a B&B Italia Eileen desk, while a Maxalto Febo armchair provides an inviting seating accent. Natural light is gently moderated by an electric roller blind, and the berth is flanked by two Contardi Manhattan Bronze reading lamps. Entertainment is provided by one 43-inch Samsung TV, and the vanity is illuminated for cosmetics by a white Ouis Poulsen Aj mini table lamp arranged alongside a set of two mirrors. Carefully engineered ceiling spotlights cast a warm, flattering glow throughout, and the Power beige carpet underfoot lends a soft, luxurious texture. The ensuite continues the refined theme, with Zirve Stone Rosa Norveggia marble sweeping across the countertop, floors and shower walls, complemented by a marble sink equipped with Artema sink faucets and Hansgrohe shower faucets. Two Marset Aura mirrors enhance the marble's radiance, while tailored ceiling spotlights refine the atmosphere. Practical yet elegant fittings complete the space, including a Bocchi toilet paper holder, a Bocchi Verona bathroom hanger and a Tecma toilet.

Port bow VIP stateroom & head

On the port bow, the VIP stateroom is a study in refined restraint, anchored by

a headboard conceived by RBD and a cleverly engineered sliding bed, all set upon Lantana Parke Hakwood Harmony parquet floors that introduce a warm, tailored elegance beneath every step. Light and privacy are controlled with a Nova Perde electric roller blind, while two Marset Ledtube mini aluminum reading lamps provide precise, adjustable illumination; entertainment is supplied by a 43" Samsung TV and the suite's atmosphere is artfully completed by a specially designed ceiling spotlight. The adjacent head continues the same level of bespoke craftsmanship, featuring Zirve Stone Calacatta marble across the counter, floor and shower walls and a sculptural marble sink as its focal point. Water fittings are chosen for both performance and style, with Artema Lavabo and Hansgrohe sink faucets paired with Hansgrohe shower faucets to deliver refined control, while thoughtful accessories include a Bocchi toilet paper holder, two Bocchi Verona bathroom hangers and a Tecma toilet. A second specially designed ceiling spotlight harmonizes the space's lighting, ensuring the bathroom's aesthetic and functionality are in perfect balance.

Starboard aft VIP stateroom & head

The starboard aft VIP stateroom centers around a bespoke headboard by RBD and is laid with powder beige carpet, forming a calm, sophisticated canvas for refined amenities including a makeup table illuminated by one White Outs Poulsen Aj mini table lamp for makeup lighting, a Maxalto Febo armchair and a B&B Italia Eileen desk. Privacy and effortless light management are provided by a Nova Perde electric roller blind, while two Contardi Manhattan Bronze reading lamps and multiple specially designed ceiling spotlights create a tailored atmosphere. Entertainment is discreetly integrated with one 43" Samsung TV for relaxed viewing.

In the adjoining head, the counter, floor and shower walls are sheathed in Zirve Stone Rosa Norveggiamarble, with two Marset Aura mirrors echoing the suite's graceful lines. Water fittings include an Artema sink faucet and

Hansgrophe shower faucets, and practical luxuries such as a Bocchi toilet paper holder, a Bocchi Verona bathroom hanger and a Tecma toilet reinforce the space's considered functionality, all accentuated by specially designed ceiling spotlights.

Starboard bow VIP stateroom & head

The starboard bow VIP stateroom and its adjoining head are composed with refined attention to detail, featuring a headboard crafted by RBD and an electrically operated Nova Perde roller blind that frames the space while powder beige carpeting adds a warm, tactile underfoot comfort. Ambient and task lighting are thoughtfully layered: two Contardi Manhattan Bronze reading lamps provide intimate illumination at night, while a pair of specially designed ceiling spotlights deliver considered overhead light. Entertainment is provided by a single 43" Samsung TV, and every surface in the head is executed in Zirve Stone Calacatta Vagli marble—gracing the counter, floor and shower walls—paired with Hansgrophe sink and shower faucets for water fittings. Practical appointments are elegantly integrated, including a Bocchi toilet paper holder, a Bocchi Verona bathroom hanger and a Tecma toilet.

Starboard guest stateroom & head

On the starboard side, the guest stateroom is composed around two single beds set on a refined, smooth sliding mechanism and framed by a bespoke headboard crafted by RBD; illumination for bedside reading is provided by a pair of Maset Ledtube Mini aluminum lamps, while natural light is precisely controlled by a Nova Perde electric roller blind and a custom ceiling spotlight casts a warm, tailored glow. Entertainment is discreetly delivered via a single 43" Samsung TV, and the cabin is grounded in luxury by Lantana Parke Hakwood Harmony parquet flooring.

The adjacent head is clad throughout — counter, floor and shower walls — in Zirve Stone Calacatta Vagli marble, complemented by its own specially designed ceiling spotlight to enhance the atmosphere. Function and finish are harmonized with Artema and Hansgrohe sink and shower faucets, a Tecma toilet, a Bocchi toilet paper holder and a Bocchi Verona bathroom hanger, all selected to maintain an understated yet sophisticated sense of practicality.

Lower corridor

Thoughtfully curated, the lower corridor houses an Indel Marine Cruise fridge installed with flush mounting to preserve an uninterrupted silhouette, a specially designed ceiling spotlight that provides precisely tailored illumination, and Lantana Parke Harwood Harmony parquet floors that impart a warm, continuous elegance to the passageway.

Laundry room

Conceived to withstand the pressures of rapid turnarounds, the laundry room is equipped with six Miele washing machines and six Miele dryers, each pair stacked and secured with a Miele coupling kit to optimize footprint and reliability. Cold storage is augmented by both a Liebherr freezer and a Liebherr fridge to ensure seamless provisioning support. Practical creature comforts include a berth situated above the closet for off watch rest, accompanied by a single Marine Spiralli reading lamp for targeted illumination. Beneath it all, Lantana Parke Hakwood Harmony parquet floors provide a durable, elegant surface that elevates the space's refined functionality.

Laundry head

A Corian Cameo White counter sits above warm teak underfoot, while the

shower is finished with the deep, espresso tones of Corian Deep Espresso flooring. Harmonious Artema fittings outfit both the sink and shower and are echoed by an Artema soap dispenser, toilet paper holder, toothbrush holder, towel rack and two robe hooks, and a Tecma toilet completes the suite.

Changing room/beach WC

This carefully composed area marries functionality with refined touches, featuring warm teak underfoot and a bright Corian Cameo White counter that commands attention. Everyday use is accommodated by a compact hand sink alongside a Bocchi Taormina sink, both finished with the precise Vitra Origin faucet, while a reliable Tecma toilet completes the arrangement, resulting in an elegant, compact retreat tailored to the beach and changing area.

Beach area

A tranquil waterfront haven designed for effortless leisure, the beach area features a soothing sauna and expansive L-shaped seating upholstered in Sunbrella canvas in silver grey, centred around the sculptural Paola Lenti Giro beach coffee table. Guests seeking sun will find comfort in four Roda Orson lounge chairs accompanied by four Roda Orson Puff ottomans, creating a versatile arrangement from dawn until dusk. For impeccable service and chilled refreshments, an Isotherm drawer refrigerator and an ITV GALA ice maker are discreetly integrated and always within easy reach.

Crew mess

Crafted for both practicality and comfort, the crew mess is appointed with an Artema sink and faucet set into a Corian Cameo White countertop that makes preparation and cleanup effortless. Cold provisioning is extensive, featuring a

Subzero refrigerator alongside a Subzero freezer, linked by a Subzero coupling kit to ensure a seamless, integrated refrigeration system. Rapid reheats and simple meals are handled by a Miele microwave, while communications and entertainment are available on a single 32" Samsung TV. Underfoot, Lantana Parke Hakwood Harmony parquet floors introduce warmth, resilience and a refined sense of character to this hardworking area.

Port crew cabin & head

Meticulous appointments define the port crew cabin and head, with illumination from two CSY spiraled chrome reading lamps enhancing the refined atmosphere and sumptuous textures underfoot. The cabin is laid in Lantana Parke Hakwood Harmony parquet floors, warmed by teak flooring that adds a welcoming glow, while the head is finished with Corian Deep Espresso shower floors for a sophisticated contrast. A Corian Cameo White counter provides a bright, hard-wearing work surface, complemented by Artema sink and shower faucets and a Tecma toilet for dependable, elegant functionality.

Starboard crew cabin

Designed to marry practicality with understated luxury, the starboard crew cabin is softly lit by two CSY spiraled chrome reading lamps that provide focused illumination. Underfoot, the space is grounded by a tasteful pairing of Lantana Parke Hakwood Harmony parquet and teak flooring, creating a warm, contemporary atmosphere, while a Corian Cameo White counter offers a clean, durable surface for daily tasks. The shower suite continues the refined material story with Corian Deep Espresso floors, complemented by Artema sink and shower faucets and completed by a Tecma toilet for dependable convenience.

Starboard aft crew cabin & head

Meticulously arranged to combine practical function with refined comfort, the starboard aft crew cabin and head are bathed in warm, layered lighting that includes a study desk lamp accompanied by two CSY spiraled chrome reading lamps, while entertainment is delivered by one 32-inch Samsung TV. Rich visual texture underfoot comes from the marriage of Lantana Parke Hakwood Harmony parquet flooring with classic teak planking, and surfaces are elegantly appointed with a Corian Cameo White counter as the shower presents Corian Deep Espresso flooring for a sophisticated contrast. High-quality fixtures — Artema sink and shower faucets paired with a reliable Tecma toilet — finish the space, creating a polished, durable and quietly luxurious working retreat for the crew.

Mechanics/equipment

The yacht's engineering fit-out has been meticulously specified to support extended autonomy and operational confidence: an Idromar MC9 water maker delivers dependable onboard fresh water production, while both VSAT and Starlink satellite systems provide global communications without interruption. A FLIR M364C-LR night vision camera enhances situational awareness after dark, and anchoring duties rely on a galvanized G2-size chain for robust ground tackle integrity. For added practicality, the diesel tender's tank is equipped with a fuel reel to make refueling both rapid and efficient.

Paint and gelcoat hull

An elegant exterior palette pairs an Aston Martin Gray hull with crisp Awlgrip Awlcraft Matterhorn White applied to the upper deck frame, the upper deck side walls, the bow seating forward of the wheelhouse, the flybridge forward

cap and the hardtop. The Aston Martin treatment is carried into the inner faces of the parampets and across the upperdeck bow sunbeds to create a unified, performance-led aesthetic, while the domes are finished exclusively in Aston Martin to complete the composition.

Exterior

Every outdoor seating surface is upholstered in Sunbrella Canvas Grey, creating an understated, sophisticated canvas for life on deck. The flybridge centers on an Exteta Capresa sofa fitted with two wooden armrests and two weighted backrest fixing systems, accompanied by a rectangular coffee table, a dedicated flybridge table and a Paola Lenti chaise lounge sunbed, while two Paola Lenti Play ottomans on the flybridge and a further Play ottoman on the upper deck invite casual relaxation. Throughout the exterior, a carefully curated selection of loose furniture provides flexibility and style: ten Roda Orson lounge chairs and ten Roda Orson Director chairs, two Exteta armchairs, two Exteta String stools and two Exteta foldable stools complement the arrangement, and the upper deck is further appointed with four Exteta foldable chairs, an additional Exteta armchair and four Paola Lenti Portofino folding chairs grouped around an MDF Italia Rock table. The cockpit is similarly equipped with four Exteta foldable chairs and its own dedicated table, and evening atmospheres are easily created with a portable lamp on the flybridge and a matching lamp in the cockpit. Entertaining is effortless thanks to well appointed bar zones: the flybridge bar includes an Isotherm drawer fridge, an ITV GALA ice maker and a BBQ, with Artema sinks provided both on the flybridge and in the cockpit, while the cockpit bar adds its own Isotherm drawer fridge and ITV GALA ice maker. Protection and versatility are provided by a hardtop, a dedicated upper deck awning and additional awnings for the flybridge, the upper deck, the bow and the aft, and practical onboard handling is enhanced by inflatable fenders and the Opacmare Transformer for easier

docking and water access.

Disclaimer

The information contained herein is presented in good faith; nonetheless, neither the precision of the particulars nor the condition of the vessel is guaranteed or warranted. This offering is subject to prior sale, alteration of price, or withdrawal from the market without notice. Supplied as a courtesy by the yacht broker to its clients, this material is not intended to serve as a formal representation of any specific yacht for sale.

CONTACTS

Shestakov Yacht Sales is a brokerage company specializing in the sale and service of yachts worldwide. The company offers services for buying and selling both new and used motor yachts, sailing vessels, and luxury superyachts. They also provide yacht registration, insurance, technical maintenance, crew selection, and charter organization services across the U.S., Canada, Latin America, the Caribbean, and the Bahamas.

The founder and lead broker of the company is Andrey Shestakov, a licensed and certified expert with extensive experience in marine engineering and shipbuilding.

The company has an extensive network of partnerships with major yacht manufacturers worldwide and provides services in multiple languages, including Russian, Ukrainian, Spanish, and English. The office is in Dania Beach, Florida, USA.

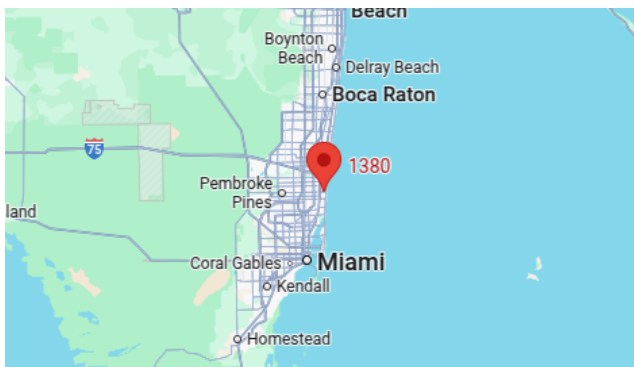
For more information and to view available yachts, you can visit the company's official website: <https://shestakovyachtsales.com>

Contact details

Phone: +1(954)274-4435

Email: andrey@shestakovyachtsales.com

Address



1380 Weeping Willow Way, Hollywood,
Florida 33019