

ALLORA - BENETTI



Builder: [Benetti](#)

LOA: 121' 0" (36.88 m)

Year Built: 2011

Beam: 26' 0" (8.18 m)

Model: Classic 121

Max Draft: 24' 4" (7.42 m)

Price: \$7,499,000 USD Subject to change.

Cruising Speed: 12 Knots (13.81 MPH)

[See full listing on our website](#)

Location: Fort Lauderdale, United States

Max Speed: 15 Knots (17.26 MPH)

TABLE OF CONTENTS

OVERVIEW	3
SPECIFICATIONS	4
Basic Information	4
Dimensions	4
Speed, Capacities and Weight	4
Accommodations	5
Hull and Deck Information	5
Engine Information	5
GALLERY	6
DETAILED DESCRIPTION	54
CONTACTS	70

OVERVIEW

Among Benetti's 121 completed superyachts, ALLORA is distinguished by exceptionally refined styling and an extraordinary specification. Delivered to MCA compliance and ABS classification, she left the shipyard with in excess of \$2 million in factory-fitted options, and bespoke detailing and meticulous craftsmanship are evident throughout this motor yacht. Shipyard enhancements include a bespoke galley dinette that can be effortlessly reconfigured to create additional volume, a custom hardtop with a removable aft sunshade allowing either open sun or shaded refuge as desired, and an opening canopy above the bar and spa pool that invites fresh breezes and expansive sky views. The interior was comprehensively refreshed during 2022/2023 when designer Patrick Knowles reimagined the spaces into a more contemporary aesthetic at an investment of approximately \$2 million; new soft goods, window treatments and custom furnishings were fitted throughout. The pilothouse now features a Garmin navigation suite comprising five 22 inch displays together with an additional 10 inch GPS, with monitoring extended to the captain's cabin and crew quarters for enhanced operational oversight.

SPECIFICATIONS

Basic Information

Model Year:
2011

Country:
United States

Year Built:
2011

Dimensions

LOA:
121' 0" (36.88 m)

Max Draft:
24' 4" (7.42 m)

Beam:
26' 0" (8.18 m)

Speed, Capacities and Weight

Cruise Speed:
12 Knots (13.81 MPH)

Water Capacity:
2000 Gallons

Max Speed:
15 Knots (17.26 MPH)

Fuel Capacity:
11000 Gallons

Gross Tonnage:
299 Pounds

Accommodations

Total Heads:

7

Crew Cabin:

4

Hull and Deck Information

Hull Material:

Fiberglass and Plastic Yachts

Hull Designer:

N/A

Deck Material:

Fiberglass

Interior Designer:

N/A

Hull Configuration:

N/A

Engine Information

Engines:

2

Engine Type:

Inboard

Manufacturer:

Caterpillar

Fuel Type:

Diesel

GALLERY





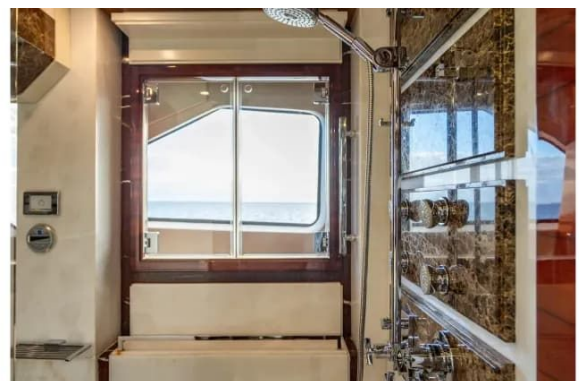






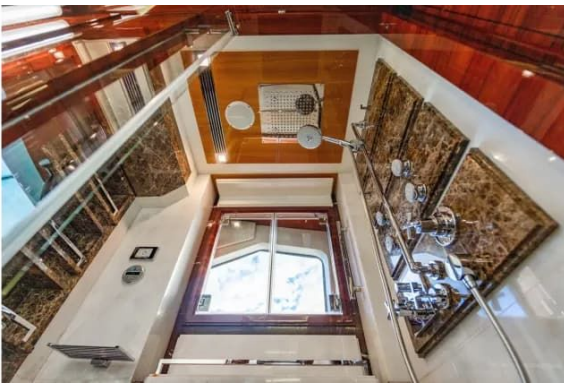








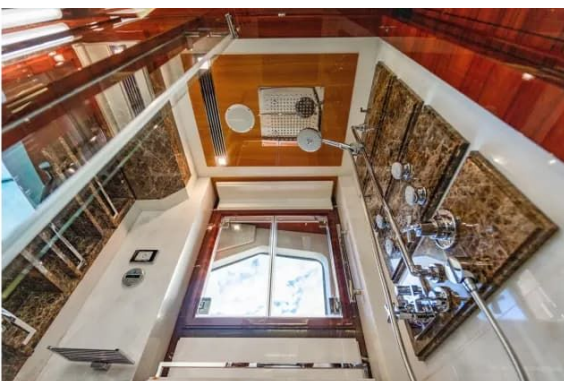


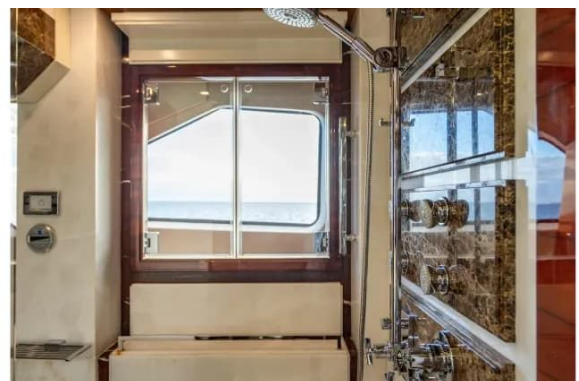






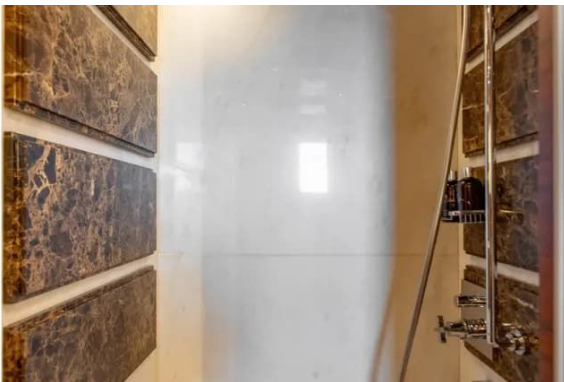


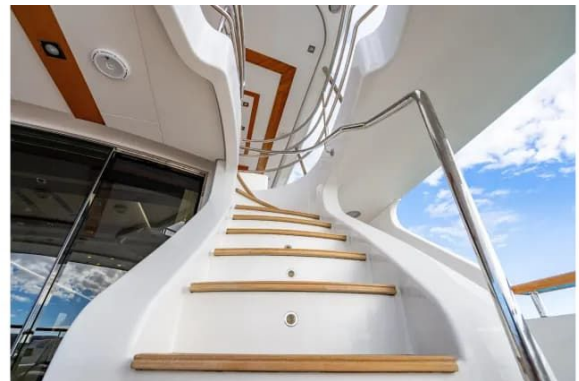
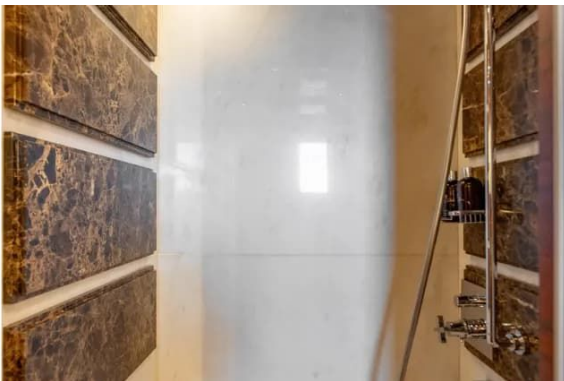




































































DETAILED DESCRIPTION

Disclaimer

All particulars relating to this yacht are provided in good faith; however, their accuracy cannot be guaranteed and no warranty is made regarding the vessel's condition. The yacht is offered subject to prior sale, adjustment of price, or removal from the market without notice. This information is supplied by the broker as a courtesy to its clients and is not intended to serve as a formal representation of any specific yacht for sale.

What sets this 121 classic apart after 2010

Vast windows in the salon, VIP and guest staterooms bathe the interior in natural light and frame sweeping, panoramic vistas, while a considered refit eliminated the central staircase from the main salon and repositioned it to improve flow; a single stairwell now links the bridge deck with the guest accommodations. The captain's cabin was relocated to the bridge deck to afford enhanced privacy, and the remaining three crew cabins furnish six generous berths. ALLORA's interior is appointed in high-gloss custom wood, tastefully paired with stainless steel and marble details, and softened throughout by lighter fabrics carried consistently from the guest areas into the galley and crew quarters—zones where lesser yachts often economize, but not here.

Above deck the original arch has been replaced by a contemporary hardtop featuring an integrated retractable sunshade, and seating both inside and out has been enlarged to facilitate effortless entertaining, with four distinct bars spread across three decks and three dining areas that accommodate up to 10 guests. The upper deck was stretched by an additional three feet, and every

exterior deck was finished with thicker teak in accordance with the build specifications, underscoring a dedication to comfort, refinement and long-term durability.

Recent refits and upgrades

Delivered in 2012 with more than \$2.1M invested in factory options and upgrades, the yacht left the shipyard with an elevated specification and a refined baseline of equipment from day one.

Between 2021 and 2022 the interior underwent a complete transformation by renowned designer Patrick Knowles, a program exceeding \$2M that replaced virtually all interior and exterior furnishings and soft goods. The refit also modernized the navigation and helm suite with five Garmin 8622 multifunction displays and added two Garmin 8610 units dedicated to the captain's and crew quarters.

A comprehensive yard period in 2023–2024, with approximately \$350K committed, included a mechanical rebuild of the port engine and the acquisition of a new complement of water toys: two Sea-Doos, an eFoil board, a SeaBob, floating beach club rafts, an inflatable slide and additional tenders and toys to enhance guest enjoyment.

In 2025 a major refit at LMC, representing in excess of \$550K, delivered an extensive scope of work to ensure class, safety and long-term reliability. All through-hull fittings were replaced; the CAT C32 main engines received full service including heat exchangers, aftercoolers and gear coolers; both 80 kW Kohler generators (John Deere) were mechanically rebuilt; a full bottom job was completed; steering systems, PTO, Quantum stabilizers and blackwater pumps were serviced; the engine room was detailed; new batteries were installed; tanks were inspected and lined/coated; cutless bearings and shafts were renewed; and a new shore power cord was fitted.

Main deck interior main salon

Stepping in from the aft deck through oversized glass doors with an automatic sliding entry, ALLORA's main salon is flooded with natural light and appointed in a refined palette of cream and soft tones, featuring upgraded interior paneling alongside polished hardwood paneling and bespoke cabinetry. Aft, a sophisticated wet bar presents glass display shelving for premium spirits, a glass bar top and a marble countertop, and is fitted with a Vitrifrigo refrigerator and an Isotherm ice maker. The carpeted sole, renewed in 2022, is complemented by recessed overhead lighting set into custom wood ceiling panels, while ambient lighting and subtle accent strip lights create an inviting atmosphere throughout. A generous sofa to port invites relaxation, and to starboard two occasional chairs with ottomans—replaced in 2022/2023—are accompanied by additional seating and built-in cabinetry to both port and starboard, all softened by window curtains and centered around a custom coffee table. The starboard entertainment centre houses a Sony LED television, and a Tecnoinox automatic aft deck door control simplifies access between interior and exterior spaces. Forward within the main deck salon, the formal dining area is arranged around a custom glass dining table seating eight, flanked by outboard storage cabinets to port and starboard and framed by two full-height windows with fitted shades, while independent climate-controlled air conditioning guarantees tailored comfort in every season.

Main deck exterior aft deck

A sweeping, curved sliding double door in polished stainless steel opens into the salon, while forward to starboard a flight of ten teak steps with integrated courtesy lighting rises to the bridge deck. Hawse pipes equipped with line rollers flank the stern on both port and starboard, accompanied by two bollards to port and two to starboard, and twin Muir warping windlasses—one

mounted to port and the other to starboard—each installed on a raised platform. For safety, a 30-inch life ring fitted with an Orion S.O.S. beacon is secured on a retrievable line. Port-side garage door controls are thoughtfully positioned for ease of use, and aft gates on both port and starboard provide direct access to the swim platform, further secured by stainless-steel gates on each side. A starboard passerelle is set in place, with a Pin-Craft control panel operating both the passerelle and the swim ladder. Centered on the deck is a bespoke teak table with stainless inlays resting on stainless pedestals, accompanied by teak chairs and facing an athwartship aft bench seat protected by a 2022 cover. Above, the overhang conceals recessed lighting, six JL Audio speakers and a CCTV camera, completing an area that blends refined comfort with practical functionality.

Accommodations

Proceeding forward along the starboard side of the main deck, beyond the day head and the stairwell, you enter the on-deck master stateroom—a commanding, serene private suite designed to feel both spacious and refined. Immediately to port is a generous walk-in closet while to starboard a built-in office or vanity offers elegant storage and a discreet workspace. The room's refreshed layout opens to abundant natural light streaming through four large hull-side windows, complemented by recessed overhead lighting and forward linen overhead panels that enhance the airy atmosphere. At the heart of the stateroom sits a king-sized bed dressed in custom bedding, set against upholstered accents and bookended by custom wood nightstands with marble tops, each fitted with two drawers and slide-out shelves. Practicality is woven throughout with storage drawers beneath the berth, reading lights at the headboard, independent climate control, and fixed windows on both sides fitted with custom electric draperies for privacy and comfort. Two lounge chairs and a marble table create a tranquil seating area, while a dressing room

to port forward—complete with an emergency escape—provides added convenience and safety; an escape hatch to the foredeck and locker access via the dressing room's large window further underscore the yacht's thoughtful design. Entertainment is provided by a Sony TV and Bose stereo, and the carpeted sole, renewed in 2022, finishes the suite in soft, tactile luxury.

The en-suite master head evokes a spa-like ambience with white marble surfaces and a custom wood inlay underfoot, framed by large windows that flood the space with light. A marble vanity with his-and-her sinks and stainless steel accents anchors the room, while the starboard shower stall, enclosed by a glass door, features a marble and custom teak sole along with both an adjustable wall-mounted shower head and a fixed overhead shower for an indulgent bathing experience.

A short descent leads to the guest accommodations where a spacious foyer greets you with a white marble sole overlaid by carpet, generous storage, and direct access to four staterooms plus ten additional berths. The starboard forward guest stateroom is configured with twin single berths and an accompanying Pullman berth, set beneath composite overhead panels with mirrored inlay and dressed in matching fabric bedspreads and pillow shams. A two-drawer night table sits between the berths, and two overhead stereo speakers accompany a hanging locker illuminated from within. Entertainment amenities include a Sony LED television, Bose stereo, and DirecTV receiver, and an escape hatch provides direct access to the crew mess. Its dedicated head continues the crisp marble theme with a marble sole and countertop housing a porcelain sink with hot and cold faucet; a porthole with an electric shade admits daylight, and the shower stall—sealed by a glass door—rests on a teak grate sole and is fitted with a hose shower head on an adjustable mount and eight water nozzles.

Across the companionway, the port forward guest stateroom accommodates three with two single berths and a custom Pullman berth and benefits from

larger windows installed after 2010 that bathe the space in modern, natural light. High-gloss finishes are paired with marble and stainless accents, while overhead panels with mirrored inlays, coordinated fabric bedspreads and pillow shams, and a central night table create a refined, cohesive décor. A Sony LED television, Bose stereo, and DirecTV receiver complete the suite's entertainment offerings. The adjoining port forward head features a marble slab sole with teak inlay and a composition of composite and wood overhead panels; the marble countertop supports a porcelain sink with hot and cold faucet and under-sink storage, a mirror above provides convenience, and a porthole with an electric shade balances light and privacy. The shower stall, bounded by a large window and glass door, rests on a teak grate sole and is equipped with a hose shower head sporting eight water nozzles.

Aft to starboard, the VIP stateroom presents a queen island berth framed by expansive windows and a carpeted sole, with composite panels inset with mirrored inlays and recessed overhead lighting lending an elegant glow. The bed is dressed in a matching spread with four pillow shams and coordinated lamp shades, flanked by two-drawer night tables to port and starboard and finished with an upholstered head panel. A built-in outboard bureau provides additional storage, and an entertainment center featuring an LG TV and Bose stereo creates a cinematic retreat; a secure safe and a port light with electric shade are included, and access to the stabilizer actuator below the sole outboard highlights the yacht's meticulous engineering. Mirroring this sense of refined comfort, the port aft VIP offers a queen island berth, carpeted sole, composite panels with mirrored inlays and recessed lighting, and the same coordinated bedding and lamp shades. Two-drawer night tables on either side, an upholstered headboard panel, and a built-in outboard bureau supply generous storage, while an LED television and Bose stereo with two overhead speakers deliver entertainment. A safe and a portlight with an electric shade complete this tranquil and comprehensively equipped sanctuary.

Performance and power

Among the 121 Benetti yachts delivered with either MTU or CAT propulsion systems, ALLORA is powered by a pair of CAT C32 engines, each rated at 1,550 hp, yielding a comfortable cruising range of 10–12 knots and a reassuring top speed of 15 knots for extended passages. All CAT engine maintenance is current, including the 1,000-hour service, complete oil changes, heat exchanger and aftercooler servicing, and filter renewals. As of March 2026 the engines show 4,790 hours and have been lightly used—predominantly operated at 11 knots with an average load of 27%—a usage profile that supports long-term reliability and reduced wear.

Extensive underbody work was completed in November 2025 with in excess of \$600,000 invested to optimize performance and protection. The running gear benefits from 24 sq. ft. Quantum zero-speed stabilizer fins, serviced in September 2025, and a Volcan coupling has been replaced to ensure smooth transmission. Four underwater lights illuminate the transom while twin underwater exhausts serve both port and starboard. Cathodic protection was renewed in September 2025 with shaft zincs, rudder zincs and two transom zincs replaced and the grounding plate also renewed that month. At the bow a Quantum 20-inch four-blade dual bow thruster propeller—serviced in September 2025—operates in harmony with a freshly serviced bow thruster, and the hull received a protective wax treatment in 2025. The swim platform features a fiberglass deck overlaid with teak, with four teak steps descending from the aft deck to port and starboard illuminated by courtesy lights, stainless steel grab rails mounted inboard on both sides for secure handholds, a hatch providing access to the tender garage, a shore-power lead on a retractable reel to port, and a retractable passerelle to starboard, all protected by stainless steel safety rails.

Aft garage

The aft garage is laid with a non-skid fiberglass sole to ensure sure footing in every sea state, while to starboard an escape hatch provides rapid egress and an emergency escape hatch opens directly onto the aft deck for added safety. Technical spaces have been carefully planned for maintenance convenience, with direct access to the steering gear and a watertight hatch secured by lock pins protecting the compartment, alongside a separate watertight door giving entry to the electrical control room. Launching and recovering personal watercraft is effortless thanks to a dedicated cradle and trolley system, all operated intuitively from the garage hatch control panel and the trolley control switches.

Toys

A sumptuous collection of brand-new water toys awaits, featuring two inflatable docks (2024), two SeaDoo Sparks (2024), two paddle boards (2024), an eFoil board (2024), a SeaBob (2024) and an inflatable slide (2024), each selected to deliver endless thrills and refined aquatic enjoyment for every guest.

Side decks

The side decks form a continuous, elegantly illuminated promenade around the yacht, with overhead lighting bathing every exterior space and CCTV cameras positioned to port and starboard for constant monitoring. Movement is assured by teak cap rails crowned with stainless-steel safety railings fabricated to meet MCA requirements, and embarkation is made effortless by boarding gates both to port and starboard; the principal starboard entry leads directly into the foyer while a convenient port forward doorway opens to the

galley and a dedicated port side access provides direct entry to the engine room. Along each side passage five courtesy deck lights to port and five to starboard mark the route, and nine teak over fiberglass steps on each side rise to the bridge deck, each step softened by discreet courtesy lighting. Safety equipment is immediately accessible, with 30" life rings to port and starboard fitted with an SOS beacon and retrieving line, and adjacent to the starboard engine room service area a fire hose and fully equipped fire station are complemented by ventilator fan controls serving both machinery and non machinery spaces. As the side decks sweep forward onto the foredeck the refinement continues: a carbon fiber davit stands ready for the bow and rescue tender above a fiberglass deck finished with a teak overlay, accompanied by a teak cap rail and stainless steel safety rail. Ground tackle is managed by Muir anchor windlasses with chain locks to port and starboard, carried out through two hawse pipes with line rollers to port and two to starboard and secured by two bow bollards to port and two to starboard. A forward flagstaff lends a timeless accent, a starboard side fire station is stowed beneath a hatch while an escape hatch to port provides egress from the master stateroom, steps lead up to the bridge deck walkway, and the forepeak is graced by a 12" ship's bell. On the starboard foredeck a dedicated fire hose sits near access to the chain lockers to port and starboard, alongside the control panel for the chain locker bilge and the bosun's locker bilge pumps and the windlass control panel.

Interior

The galley mirrors the same premium finishes found in the salon, centered on granite worktops that cradle a double stainless steel sink served by a hot-and-cold water faucet. Culinary performance is comprehensive, featuring a Miele six burner stovetop alongside a Miele oven, a Miele dishwasher and a Gaggenau microwave oven, while a Miele blower/light above the range

provides effective extraction. Cold storage is handled by stainless steel pull out refrigerator/freezer drawers, supplemented by two wine coolers and ample storage both above and below the counters, and the whole area is safeguarded by a discreet smoke sensor.

In the Stu Pantry, refrigeration capacity expands to a combined total of eleven refrigerator/freezer units distributed between the galley and the starboard pantry, with access through a watertight door onto the portside deck. The pantry is arranged for service and preparation, offering a practical prep surface and a dinette whose table can be converted into additional storage if required, with a convenient cabinet installed above the seating. Beverage service is elevated by two Sub Zero wine coolers and a Scotsman ice maker, while two Sub Zero 427R refrigerated drawers and a stainless steel refrigerator/freezer manage everyday provisioning, all supported by thoughtfully placed storage lockers. A CO2 release system linked to the galley extractor hood provides an additional layer of safety.

The day head, reached directly from the salon, features a marble sole with elegant wood inlay, composite and wood overhead panels with recessed lighting, and a marble countertop fitted with a sink and a hot-and-cold faucet.

Bridge deck

The aft bridge deck is laid in teak over fiberglass, creating a refined underfoot surface beneath a composite overhead that houses recessed lighting and four JL Audio stereo speakers. Comfortable lounge arrangements include sofas, two armchairs and a bespoke coffee table, while double stainless-steel sliding doors provide seamless access to the bridge deck lounge. Alfresco meals are centered around a high-gloss rectangular teak dining table with cover and eight matching teak chairs, accompanied by an LED television with dedicated storage for tableware. Circulation and safety are addressed with stainless-steel and teak handrails to port, starboard and aft that comply with MCA height

requirements, and a stainless-steel railing wraps the stairwell. Ten teak steps to starboard aft lead down to the aft deck with a stainless-steel handrail, while nine teak steps ascend to the sun deck. Two stern lights illuminate the area, a removable awning offers shade when required, and a fire station with hose is stowed outboard of the forward stairwell.

The wet bar forms a natural gathering point with a molded fiberglass counter, a stainless-steel sink and faucet, and three barstools fitted with backrests. Cold storage and ice service are provided by an Isotherm refrigerator and an ice maker installed in 2023. Forward safety equipment includes two 30-inch life rings with retrieving line and Pains Wessex strobe lights (battery expiration January 2025), supported by three wheelhouse windshield wipers and port and starboard wing stations. Helm functionality is delivered through a VDS integrated systems display that incorporates Quantum bow thruster control, a steering jog stick, an integrated display (currently inoperable) and engine stop/start switches, while the walkway to the foredeck is protected by MCA-compliant railings.

Pilothouse

Entered from either side deck, the pilothouse unfolds as a refined command center centered on five 22-inch Garmin 8622 displays at the helm, joined by two Garmin 8610 units in the captain's station and a further 8610 in the crew quarters. To starboard a dedicated bridge-deck lounge display keeps guests informed, while a private captain's quarters aft with en-suite head provides discreet comfort for the officer on watch. The electrical control panel is thoughtfully sited beside navigation lighting and fire pump controls, with an Auto Prime fire alarm panel and a general alarm switch offering layered safety oversight. A stainless-steel and teak ship's wheel is faced by a leaning post and three custom athwartship seats with integrated footrests, and navigation is delivered with precision by a Sperry Marine gyro compass paired with a Sperry

Marine NaviPilot autopilot, supported by rudder set point and angle indicators and a Garmin anemometer. Maneuvering authority comes from Quantum bow thruster and stabilizer controls, while propulsion is managed through Caterpillar electronic engine controls with independent back-up engine controls. To starboard an integrated communications suite includes a Sailor TT-3606E distress transmitter, Vingtor VSP-211-L radio, Sailor 6222 VHF radio, Icom MA510TR, a Garmin VHF handset and Sailor emergency VHF radios, and system monitoring is consolidated via a Benetti / Cantaloupe alarm panel with Team Italia touchscreen control—altogether creating a bridge designed for confident command and seamless operation.

Sun deck

Teak planking stretches uninterrupted across the entire sun deck, where a starboard staircase of nine teak steps ascends to the bridge deck and is secured by an MCA compliant stainless steel and teak safety rail, further framed by its own dedicated stainless steel guard. Forward on centerline a Jacuzzi with sunpads to port and starboard offers a private retreat, its pump renewed in 2026 to ensure reliable operation. The social heart of the deck is a bespoke wet bar finished with a handsome teak top, three bar stools with backrests and a pop up flatscreen TV, supported by a sink with hot and cold water, built in storage, Isotherm refrigeration and an Euhomy ice maker to keep beverages perfectly chilled. Atmosphere is provided by eight JL Audio stereo speakers with subwoofer, while a starboard fiberglass cabin conceals a Sony stereo and a port side fiberglass cabinet houses an additional Isotherm refrigerator. Retractable sun shades fore and aft allow instant adjustment of sunlight, and the deck layout includes four loungers, four teak chairs and a custom table for elegant alfresco living. Safety equipment comprises four twelve man Survitec life rafts fitted with hydrostatic releases, due to expire October 2026. For connectivity and navigation confidence the sun deck is

equipped with two STARLINK antennas installed in 2024, GPS antennas, two VHF antennas, two OpenRay radar scanners, a FLIR camera, an AIS antenna and anchor lights.

Crew quarters

On the bridge deck, the captain's suite occupies a discreet position directly behind the pilothouse and beside the helm, offering a private sanctuary that includes an ensuite head with shower, a Garmin 10-inch GPS display, and well-conceived storage highlighted by a dedicated closet. The companionway and crew mess have been arranged to support a professional complement, providing four crew staterooms in total—three below and the captain's accommodation above—and a welcoming dinette with a table and three barstools in addition to the galley seating. Entertainment and communications are comprehensively specified with a Sony LED television, a Garmin 8610 in the crew galley installed in 2022, a Garmin VHF radio, a Bose stereo, and a Benetti alarm panel, while overhead panels with recessed lighting and additional recessed fixtures create a refined ambience and courtesy lights in the steps ensure safe movement after dark.

Practical systems and conveniences have been thoughtfully placed: an escape hatch links to the starboard forward guest stateroom, refrigeration is provided in the mess area, and a generous countertop with a stainless steel sink and faucet supports daily service, all backed by independent climate control so the crew remain comfortable in any conditions. Extended passages are made effortless by a dedicated laundry room equipped with two Miele PT135C clothes dryers serviced in 2025, two Miele clothes washers serviced in 2025, and a Miele refrigerator/freezer, allowing the vessel to operate with autonomy and efficiency.

Sleeping quarters are practical yet comfortable. The port forward crew stateroom is fitted with upper and lower single berths, under-berth storage, a

porthole with storm cover and curtain, individual reading lights at each berth, overhead illumination, and its own climate control. The port aft crew stateroom mirrors these arrangements, offering the same upper and lower single berths, beneath-berth storage, porthole with storm cover and curtain, reading lights, overhead lighting and independent temperature control for a consistent standard throughout the crew accommodations.

The crew head is bright and efficiently organized, appointed with two overhead lights, a vanity with a porcelain sink and faucet, storage beneath the sink, and a shower stall equipped with an overhead light and a hose shower head mounted on an adjustable bracket. For maintenance accessibility, the bow thruster was serviced in November 2025, and the thruster tunnel and motor assembly can be reached via the starboard forward crew head.

Machinery & electrical

Propulsion is entrusted to twin CAT C32 engines, showing as of 03/09/2026 a total of 4,794 hours on the port unit and 4,804 hours on the starboard, each engine served by triple Racor fuel filters (last serviced September 2025) and controlled through a Cantilupi panel for the main engine exhaust valves. Auxiliary generation comprises two Kohler/John Deere 80 kW units that received full mechanical rebuilds in November 2025, their hour meters reset at that time and currently registering 616 and 23 hours respectively; each generator is protected by its own Racor fuel filter also serviced in September 2025. The driveline configuration incorporates a PTO from each transmission to supply the stabilizer system, and monitoring is comprehensive with oil pressure and engine temperature gauges alongside individual hour meters. The engine room is equipped for ongoing operation and maintenance with a hand operated fuel stripping pump, a Quantum stabilizer and dedicated bow thruster oil reservoir, a fuel transfer pump with clean and sludge oil control, and both electric and automatic bilge pumps backed by high water alarms.

Safety and redundancy are prioritized with a fire hose located at the engine room entrance, two bilge/fire pumps routed to the manifold, and recently renewed blackwater pumps (replaced March 2026).

Electrical storage and charging systems are substantial and thoughtfully distributed, featuring twelve 24 volt house service batteries located starboard forward, plus two 12 volt batteries allocated to each main engine and two 12 volt batteries for each generator. Charging duties are managed by Mastervolt units—a 24/50 charger for the main engines, a 24/25 for the generators, and a 24/75 dedicated to the house bank. The vessel's plumbing and waste treatment capabilities include a Hamman wastewater treatment system, a clean oil tank to port forward and a waste oil tank to starboard forward with a dedicated oil change pump, while the freshwater system comprises dual pressure pumps, a freshwater filter and an accessible spigot with hose; fuel purity is further ensured by an Alfa Laval fuel/water separator. Climate control is provided by a three compressor chilled water air conditioning plant supported by two raw water circulating pumps and two chilled water circulating pumps, and the machinery room—situated starboard aft of the engine room—houses a high water alarm, the hydraulic pump and motor for the passerelle, underwater light transformers and the multiple compressors that service the chilled water system. Shore and onboard electrical distribution are engineered for worldwide operation with ASEA Shore Power Classic frequency converters (AC45VHE 3 Master and AC45VHE 3 Slave) protected by ASEA system circuit breakers and coordinated through Glendinning selector switches; shore power panels to port and starboard display voltage, amperage and frequency, while generator panels on both sides present voltmeter, ammeter, frequency and kilowatt readouts. Main distribution flows through a 100 A three phase circuit breaker panel, supported by a 220 V three phase and 24 V DC circuit panel with shore power phase location switches for exacting alignment. Dedicated control switches provide fingertip command of critical systems—fuel transfer pump, lube oil

pump, bilge/fire pump, hot water pump, lazarette extractor, bilge pump tank, Boiler One and Boiler Two, high water alarms, the air conditioning unit and its raw water circulating pump, as well as independent climate air conditioning controls—ensuring immediate and intuitive operation of every essential function.

CONTACTS

Shestakov Yacht Sales is a brokerage company specializing in the sale and service of yachts worldwide. The company offers services for buying and selling both new and used motor yachts, sailing vessels, and luxury superyachts. They also provide yacht registration, insurance, technical maintenance, crew selection, and charter organization services across the U.S., Canada, Latin America, the Caribbean, and the Bahamas.

The founder and lead broker of the company is Andrey Shestakov, a licensed and certified expert with extensive experience in marine engineering and shipbuilding.

The company has an extensive network of partnerships with major yacht manufacturers worldwide and provides services in multiple languages, including Russian, Ukrainian, Spanish, and English. The office is in Dania Beach, Florida, USA.

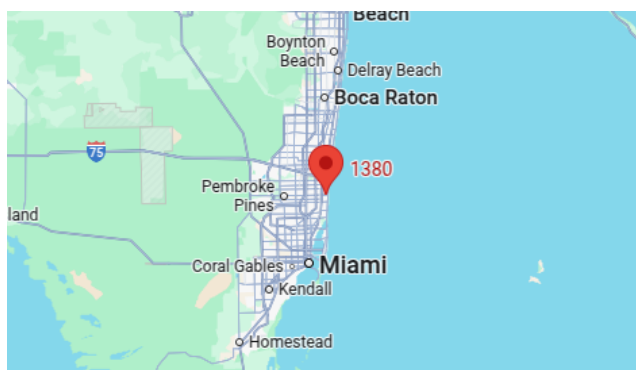
For more information and to view available yachts, you can visit the company's official website: <https://shestakovyachtsales.com>

Contact details

Phone: +1(954)274-4435

Email: andrey@shestakovyachtsales.com

Address



1380 Weeping Willow Way, Hollywood,
Florida 33019