

## BLUE EYES - AZIMUT YACHTS



**Builder:** [Azimut Yachts](#)

**LOA:** 123' 0" (37.60 m)

**Year Built:** 2024

**Beam:** 26' 0" (7.98 m)

**Model:** Azimut Grande Trideck

**Max Draft:** 6' 9" (2.05 m)

**Price:** \$20,137,162.84 USD Subject to change.

**Cruising Speed:** 12 Knots (13.81 MPH)

[See full listing on our website](#)

**Location:** Viareggio, Italy

**Max Speed:** 24 Knots (27.62 MPH)

---

# TABLE OF CONTENTS

---

<b>OVERVIEW .....</b>	<b>3</b>
<b>SPECIFICATIONS .....</b>	<b>4</b>
Basic Information .....	4
Dimensions .....	4
Speed, Capacities and Weight .....	5
Accommodations .....	5
Hull and Deck Information .....	5
Engine Information .....	6
<b>GALLERY .....</b>	<b>7</b>
<b>DETAILED DESCRIPTION .....</b>	<b>10</b>
<b>CONTACTS .....</b>	<b>15</b>

## OVERVIEW

---

Bespoke Azimut Grande Trideck presented in immaculate order, BLUE EYES marries sculptural refinement with purposeful engineering. The six stateroom layout, conceived by Achille Salvagni, envelops guests in warm, sculptural interiors while Alberto Mancini's custom metallic profile and specified custom metallic finish give the yacht a striking, individualized presence. Recently repainted and with all warranty items completed, she accommodates twelve guests comfortably, including an upper-deck VIP suite framed by sweeping panoramic windows.

Configured with an extensive options suite—uprated engines and generators, an electric stern thruster, and enhanced soundproofing—BLUE EYES balances performance, handling and serene onboard comfort. Azimut's D2P wave-piercer hull, married to carbon fiber construction, delivers exceptional volume, efficiency and quiet running for confident long-range cruising. Four cascading open-air terraces flow from the sundeck down to a full beach club at sea level, creating a rare sense of continuity across four decks.

This tri-deck superyacht possesses true flybridge yacht stature with megayacht sensibilities, designed for effortless indoor-outdoor living and immediate enjoyment. BLUE EYES presents as virtually new and is available for immediate delivery; viewings are warmly encouraged. Most images are design renderings and minor variations may occur. iPhone photos and videos are available on request, and a dedicated photoshoot is scheduled.

# SPECIFICATIONS

---

## Basic Information

---

**Category:**  
Motor yachts

**Year Built:**  
2024

**Sub category:**  
Motor Yacht

**Country:**  
Italy

**Model Year:**  
2024

## Dimensions

---

**LOA:**  
123' 0" (37.60 m)

**Max Draft:**  
6' 9" (2.05 m)

**Beam:**  
26' 0" (7.98 m)

## Speed, Capacities and Weight

---

**Cruise Speed:**

12 Knots (13.81 MPH)

**Water Capacity:**

1056.69 Gallons

**Max Speed:**

24 Knots (27.62 MPH)

**Fuel Capacity:**

6075.96 Gallons

**Gross Tonnage:**

295 Pounds

## Accommodations

---

**Sleeps:**

12

**Crew Berths:**

7

**Total Heads:**

7

## Hull and Deck Information

---

**Hull Material:**

Fiberglass and Plastic Yachts

**Hull Designer:**

N/A

**Deck Material:**

GRP

**Interior Designer:**

Achille Salvagni

**Hull Configuration:**

Bulb Keel

## Engine Information

---

**Engines:**

2

**Engine Type:**

Inboard

**Manufacturer:**

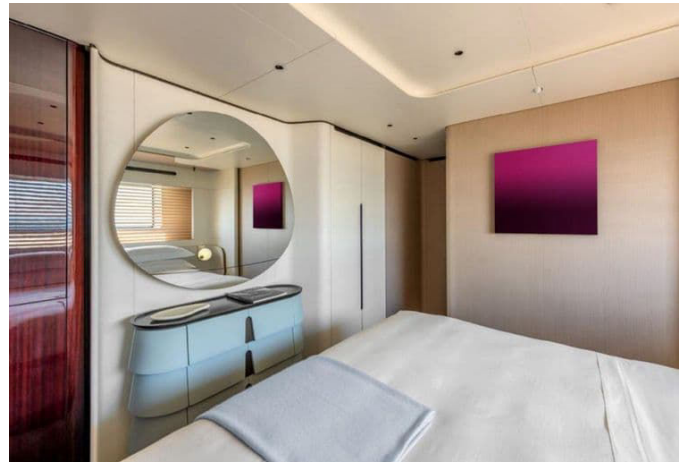
MTU

**Fuel Type:**

Diesel

# GALLERY







---

# DETAILED DESCRIPTION

---

## Accommodation

---

BLUE EYES is conceived in a six-cabin configuration to host up to twelve guests in consummate comfort. On the main deck, the saloon forgoes a formal dining room in favor of an elegant, flexible open-plan living area that flows aft through full-height glass sliders to a lounge cockpit and further to a raised sea-view terrace. Forward, the full-beam owner's suite indulges with an en suite marble bathroom, walk-in storage, a dedicated desk, and electric curtains, while a conveniently located day head serves the main deck guest areas. Below, the lower deck welcomes four guest cabins—two VIP staterooms with double beds and two guest cabins with adaptable sleeping, including a french bed and a sliding berth configuration—each appointed with en suite marble bathrooms, individual climate control, and its own safe; a staircase links the lower lobby seamlessly to the upper deck. The upper deck crowns the layout with a VIP stateroom framed by panoramic windows, a signature highlight of the six-cabin arrangement, adjacent to a refined sky lounge featuring a convertible coffee to dining table, a day head, a full pantry with wine cooler, and the wheelhouse; aft, the terrace invites al fresco dining for twelve with direct access to the sundeck. Up top, the sundeck offers a hi lo dining table for ten, twin sofas, a bar with BBQ, and a retractable awning, while the foredeck pampers with a jacuzzi surrounded by sunpads for maximum privacy when moored stern to. At sea level, a full beach club unfolds with a fold down platform, wet bar, and shower, complemented by a starboard tender garage. Crew enjoy self-contained quarters with separate access, comprising three cabins with en suite bathrooms, a mess with convertible berth and laundry, and a main deck galley equipped with professional Miele appliances; a second pantry on the upper deck services the sky lounge and

exterior dining independently. Throughout all guest areas, Sonos audio and Apple TV 4K pair with comprehensive Wi-Fi coverage to elevate onboard living.

## Propulsion & steering

---

The yacht's driveline is engineered for authority and finesse, featuring a twin shaft line mated to ZF 3360 gearboxes with 4:1 reduction, seawater lubricated bearings, and Marinox 17 shafts. Thrust is delivered by five-blade nickel-aluminium-bronze propellers built to ISO S class, working in concert with two spade rudders of 0.74 sqm in AISI 316L. Precision handling comes via electro-hydraulic steering with 400V supply and 24V backup, while an integrated autopilot works harmoniously with the stabilisers for effortless, confidence-inspiring control.

## Paint job

---

Her presence is defined by a meticulous paint specification: hull topsides in a custom metallic hue as per Mancini design, a hard top and rollbar finished with bespoke coatings in line with the same Mancini vision, and a superstructure in Snow White accented by crisp black details for a timeless, contemporary contrast.

## Safety & security

---

A comprehensive suite of safety systems stands at the ready, beginning with FM200 fixed fire extinguishing in the engine room and a fire alarm network with heat, smoke, and vapour detection throughout. An emergency lighting system powered by a 24V DC battery assures visibility, while two life rafts for ten persons each, an emergency bilge/fire motorpump, and a full complement of portable fire extinguishers amplify preparedness. Surveillance and

awareness are enhanced by 6 CCTV cameras plus 2 mooring cameras, supplemented by 16 life jackets, 6 parachute flares, 6 smoke signals, and 2 life buoys with buoyant line.

## Communication & navigation

---

The navigation suite centers on Simrad NSO EVO3 with dual 16" displays and is paired with dual ECDIS, dual radar arrays (Halo 4ft and 6ft), dual GPS via Simrad GS25, and a Simrad AP48 autopilot. An AIS, a Simrad Precision 9 electronic compass, speed log and echosounder, and an emergency station with Simrad IS42 display round out a Smart Boat Package that unifies awareness and control. Communication is equally advanced, with VHF via Simrad RS90S complemented by an additional crew VHF, a PABX phone system, and Starlink connectivity, while six 360° CCTV cameras plus two mooring cameras, a PepLink router with eight access points, and a Wi-Fi/LTE antenna kit ensure resilient coverage and reach.

## Electrical

---

Electrical power is delivered by 2 Kohler generators rated at 80kW and 50Hz (1150 hours), feeding a 400V AC, 50Hz, three phase main distribution backbone. Hotel and utility circuits are served by 230V AC and 24V AC single phase supplies for lighting and appliances, with 24V DC dedicated to service, radio, and emergency systems. Shoreside integration arrives via an 80 KVA shore isolation transformer and a 125A shore power connector with automatic reel. Oversight and convenience are elevated by the IDEA planned maintenance system and a Smart Boat Package for intuitive home automation.

## Mechanical

---

The yacht's supporting infrastructure mirrors her robust electrical architecture to assure reliability at sea: a 400V AC, 50Hz, three phase main distribution is complemented by 230V AC and 24V AC single phase supplies for lighting and appliances, with 24V DC circuits dedicated to service, radio, and emergency loads. Shore power integration is managed by an 80 KVA shore isolation transformer and a 125A shore connector with automatic reel, while operational efficiency is underpinned by the IDEA planned maintenance system and the Smart Boat Package.

## Deck

---

Every exterior surface is crafted for barefoot luxury and purpose, with 12mm teak decking across all external decks, stairs, and the beach area. Seamless operations are assured by two electric windlasses and two electric capstans, a telescopic retractable hydraulic gangway, a practical swimming ladder, and the allure of 8 Aqualuma underwater lights. Beyond utility, the amenities define outdoor living: a jacuzzi on the forward bow area; a beach club with a fold down platform, wet bar, fridge/ice maker, and shower; a Kenyon BBQ on the sundeck within its dedicated cabinet; a sundeck bar with fridge/ice maker and a taut sundeck tent on carbon fibre poles; an upper deck aft dining table that extends to seat twelve; a lounge cockpit on the main deck aft; and four pop up lights to set the mood in the bow lounge.

## Galley & laundry

---

The main deck galley is chef ready with Miele cooking top, Miele oven, Miele microwave, Miele dishwasher, and Miele exhaust hood, supported by 2 commercial fridge/freezers and a dedicated wine cooler to keep provisions and

vintages perfectly tempered. Laundry and service are effortlessly handled by a Miele washer and dryer, while ice makers positioned in the main saloon, the upper deck pantry, the beach bar, and the sundeck bar, together with mini fridges in the crew mess, main saloon, upper deck pantry, beach bar, and sundeck bar, ensure refreshments are always to hand.

## **Audiovisual**

---

Entertainment is immersive and intuitive: the owner's cabin features a 49" TV with Sonos Amp, PlayBar, Sub, and full surround; the main saloon elevates the experience with a 65" TV, Sonos Amp, PlayBar, Sub, and surround on a rotatable rack; and the sky lounge mirrors the owner's suite with a 49" TV, Sonos Amp, PlayBar, Sub, and surround. Each guest cabin is individually equipped with a 32" TV, Apple TV 4K, and a Sonos Beam. Outdoors, the aft main deck, aft upper deck, sundeck, bow, and beach zones are energised by Sonos Amps and Sonance marine speakers, with the sundeck enhanced by 6 speakers and iPort control, while crew areas enjoy reliable Sony/Pioneer audio.

## **Tenders & toys**

---

Adventure is always within reach with a Williams Dieseljet 565 for swift, dry rides, a Seadoo Wakepro for spirited watersports, and a netted sea pool that transforms the anchorage into a private, secure swimming lagoon.

## **Stabilizers**

---

CMC Stabilis Electra SE80 electric stabilisers with 1.85 sqm fin area deliver composed motion both underway and at anchor, bringing true zero speed serenity to every horizon.

# CONTACTS

---

Shestakov Yacht Sales is a brokerage company specializing in the sale and service of yachts worldwide. The company offers services for buying and selling both new and used motor yachts, sailing vessels, and luxury superyachts. They also provide yacht registration, insurance, technical maintenance, crew selection, and charter organization services across the U.S., Canada, Latin America, the Caribbean, and the Bahamas.

The founder and lead broker of the company is Andrey Shestakov, a licensed and certified expert with extensive experience in marine engineering and shipbuilding.

The company has an extensive network of partnerships with major yacht manufacturers worldwide and provides services in multiple languages, including Russian, Ukrainian, Spanish, and English. The office is in Dania Beach, Florida, USA.

For more information and to view available yachts, you can visit the company's official website: <https://shestakovyachtsales.com>

## Contact details

---

**Phone:** +1(954)274-4435

**Email:** [andrey@shestakovyachtsales.com](mailto:andrey@shestakovyachtsales.com)

## Address

---



1380 Weeping Willow Way, Hollywood,  
Florida 33019