

## PREMURA - SANLORENZO



**Builder:** [Sanlorenzo](#)

**LOA:** 124' 0" (37.95 m)

**Year Built:** 2018

**Beam:** 26' 0" (8 m)

**Model:** SD 126

**Max Draft:** 7' 4" (2.23 m)

**Price:** \$14,688,807.4 USD Subject to change.

**Cruising Speed:** 15 Knots (17.26 MPH)

[See full listing on our website](#)

**Location:** Valencia, Spain

**Max Speed:** 18 Knots (20.71 MPH)

# TABLE OF CONTENTS

**OVERVIEW ..... 3**

**SPECIFICATIONS ..... 4**

    Basic Information ..... 4

    Dimensions ..... 4

    Speed, Capacities and Weight ..... 5

    Hull and Deck Information ..... 5

    Engine Information ..... 5

**GALLERY ..... 6**

**DETAILED DESCRIPTION ..... 11**

**CONTACTS ..... 21**

## OVERVIEW

---

Premura is a magnificent motor yacht stretching an impressive 37.95 meters in length. Built by a prestigious Italian shipyard, this breathtaking vessel made her debut in 2018. With a beam of 8 meters and a draft of 2.33 meters, Premura boasts a generous volume of 314 GT, making her a commanding presence on the water.

This opulent superyacht features an outstanding exterior design, ensuring she captures attention in any marina. Accommodating up to 12 guests, Premura provides a sumptuous experience, complemented by accommodations for 7 crew members, including the captain. The yacht is crafted with a sturdy hull and a sleek superstructure, embodying both grace and performance.

Driven by twin MTU engines, Premura can achieve an exhilarating top speed of 16 knots, offering a thrilling cruising experience. With a fuel capacity of 34,200 liters, she is well-prepared for long-distance journeys. For those interested in yacht sales at the current boat location, this extraordinary yacht for sale offers an unmatched opportunity to acquire a vessel that epitomizes luxury and elegance.

# SPECIFICATIONS

---

## Basic Information

---

**Category:**  
Motor yachts

**Year Built:**  
2018

**Sub category:**  
Motor Yacht

**Country:**  
Spain

**Model Year:**  
2018

## Dimensions

---

**LOA:**  
124' 0" (37.95 m)

**Max Draft:**  
7' 4" (2.23 m)

**Beam:**  
26' 0" (8 m)

## Speed, Capacities and Weight

---

**Cruise Speed:**

15 Knots (17.26 MPH)

**Water Capacity:**

1320.86 Gallons

**Max Speed:**

18 Knots (20.71 MPH)

**Fuel Capacity:**

9.04 Gallons

**Gross Tonnage:**

314 Pounds

## Hull and Deck Information

---

**Hull Material:**

N/A

**Hull Designer:**

N/A

**Deck Material:**

N/A

**Interior Designer:**

Sanlorenzo

**Hull Configuration:**

N/A

## Engine Information

---

**Engines:**

1

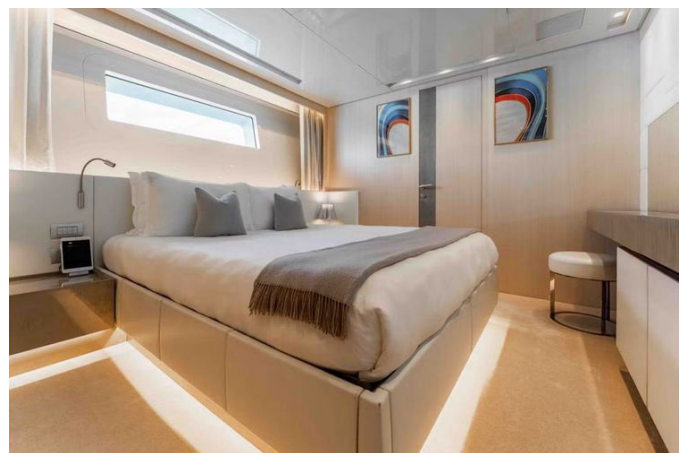
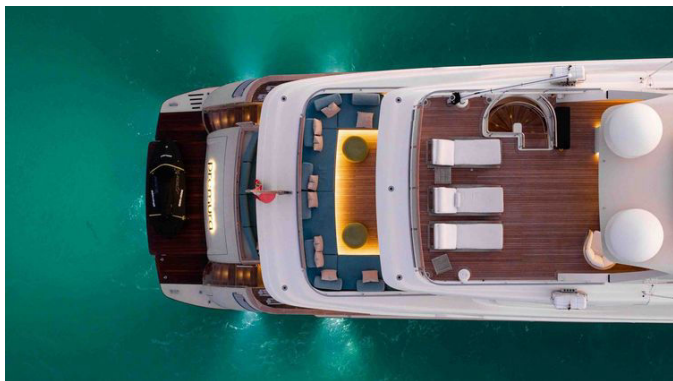
**Fuel Type:**

Diesel

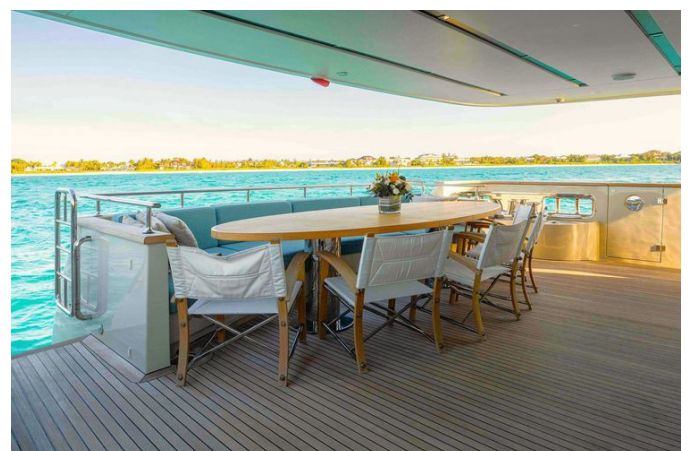
**Manufacturer:**

MTU

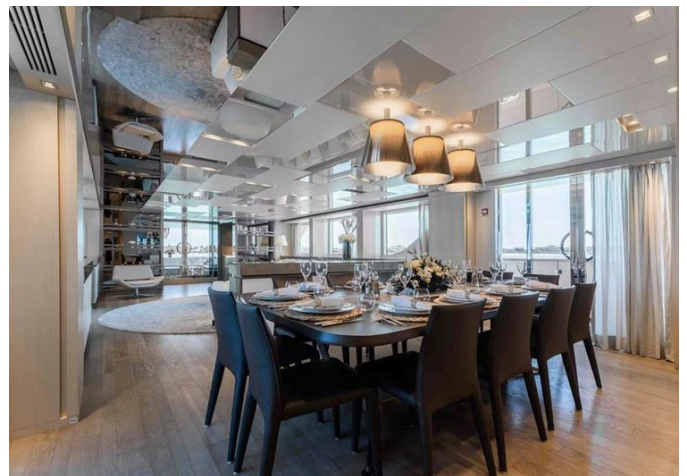
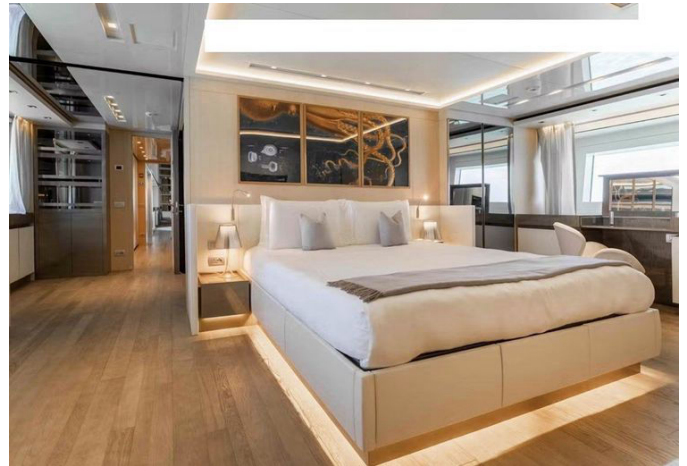
# GALLERY

















# DETAILED DESCRIPTION

---

## Section name

---

This exceptional semi-displacement motor yacht, crafted with precision and elegance by the esteemed builder Sanlorenzo, is a true masterpiece. The SD 126 model, bearing hull number #64, is distinguished by its IMO number 9852183 and MMSI number 319131600. The naval architecture showcases Sanlorenzo S.p.a.'s expertise, while the exterior design is the creation of Francesco Paszkowski. The interior, a seamless blend of luxury and practicality, is also crafted by Sanlorenzo S.p.a.

Launched in 2018 and refitted in 2023, this yacht is classified under RINA (Maltese Cross Hull Mach Y MCA) for unrestricted navigation, ensuring it adheres to the highest safety and performance standards. Built with a GRP hull and superstructure, complemented by teak decks, the yacht exudes both durability and elegance.

Accommodating a crew of up to seven, the yacht sails under the Cayman Islands flag. It is powered by two MTU 12V 2000 M86 engines, each producing 1,268 kW (1,700 Hp), ensuring a smooth and powerful voyage across the seas. With a gross tonnage of 314 and a net tonnage of 94, the yacht has a displacement of approximately 222 tons.

In terms of dimensions, the yacht measures 37.95 meters (124' 6") in length overall (LOA), with a beam of 8.00 meters (26' 3") and a maximum draft of 2.23 meters (7' 4"). This spacious vessel offers a top speed of 18 knots, a cruising speed of 15 knots, and an economical speed of 11 knots, with a range of 2,350 nautical miles at the latter speed. Fuel consumption is efficient, with 380 liters per hour at 15 knots and 160 liters per hour at 11 knots.

The yacht's capacities are impressive, with accommodation for 10+2 guests in five luxurious cabins, and facilities for a crew of seven in four cabins. The fuel



capacity is 34,200 liters (9,035 US gallons), while fresh water storage is 5,000 liters (1,321 US gallons). Additional tanks include a holding tank of 3,570 liters (943 US gallons), a dirty oil tank of 450 liters (119 US gallons), and a grey/black water tank of 3,000 liters (793 US gallons). There is also a fuel overflow tank with a capacity of 790 liters (209 US gallons).

The accommodation is designed for ultimate comfort, with space for up to 12 guests in five cabins, including one master cabin and two VIP staterooms on the lower deck, each with queen-size beds and ensuite shower rooms. There are also two guest staterooms with twin beds. The crew quarters include one captain's cabin and three crew cabins, ensuring that the yacht is well-staffed for any voyage.

## Accommodation

---

The accommodations on this yacht are crafted to provide unmatched luxury and comfort. The crew quarters are meticulously designed with three cabins, each containing a single bed and a fixed Pullman or bunk, all equipped with ensuite shower facilities. The swim platform is an engineering marvel, adjustable for tender handling and launching, and comes with a foldable swimming ladder, stainless steel handrails, and a shower. For added ease, there is a removable boarding pole for embarking, and the tender whips are capable of supporting up to 3 tons on both sides.

On the main deck, the owner's suite is a haven of sophistication, featuring a king-size bed, parquet flooring, an ensuite bathroom, a walk-in wardrobe, and a private office. The foredeck area is ideal for relaxation, with two rectangular folding coffee tables made of teak that can be lowered to transform into sun loungers, complemented by two L-shaped sofas with cushions. The aft cockpit is equally inviting, with a large table, six folding director's chairs, and a sofa with cushions. The main salon and dining room are elegantly furnished with two sofas, an armchair, and two coffee tables on carpeted flooring. A side

balcony with a lateral door on the starboard side leads to a bar area, while the dining area features a table for 12, parquet flooring, and a day head. A corridor leads to a second day head, ensuring convenience for all guests.

The upper deck is a paradise for entertainment, featuring an elliptical teak dining table with 12 chairs, two L-shaped natural teak sofas with cushions, and a sun awning. An outdoor cinema at the aft offers a unique experience with a five-seat sofa with dormeuse, a coffee table, an armchair, and a bar area, with a TV that raises electrically. The skylounge includes a day head and pantry, while the captain's cabin provides a wide single bed, chair, desk, safe, and ensuite shower room. The wheelhouse is equipped with a leather-covered console with instruments, a small sofa, a table, and a chart area.

The sundeck is dedicated to relaxation, featuring a sunbathing area at the stern with three natural teak chaise longues. A wet bar is ideally situated for social gatherings, complete with three bar stools, a cabinet with a natural teak top, a refrigerator, an ice maker, and a sink, ensuring that every need is met while enjoying the open sea.

## Mechanical equipment

---

The yacht's mechanical equipment exemplifies its engineering prowess and dependability. Central to its propulsion are two MTU 12V 2000 M86 diesel engines, each producing a remarkable 1,268 kW (1,700 Hp). As of November 26, 2024, the port engine has recorded 2,334 hours, while the starboard engine has 2,340 hours, both secured by an extended warranty covering the engine and gearbox.

Power is generated by two Kohler EFOZDJ diesel generators, each delivering 70 kW (94 Hp). By November 2024, the port generator has logged 6,420 hours, and the starboard generator has 6,469 hours. These generators function at 400Vac, 50Hz, in a 3-phase setup with a neutral line.

The yacht's sewage management is handled by a Tecnicomar 70 system, while the toilet facilities are powered by Tecma 220 Vac. Stability is provided by CMC Marine SE 80 stabilizers, effective both at anchor and in motion, ensuring "zero speed" stability. Maneuverability is enhanced by a CMC Marine BTM 60EA-52 bow thruster.

Onboard comfort is maintained by a Dometic air conditioning system with a capacity of 360,000 BTU per hour. Freshwater needs are met by an Idromar MC9S water maker, capable of producing 600 liters per hour. Hot water is supplied by three Gianneschi boilers, each with a 200-liter capacity, supported by a 3-phase double element Wilo hot water circulation pump.

The propulsion system includes two ZF BW 3350 gearboxes, Marinox17 stainless steel shafts, and two 5-fixed blade propellers. Steering is managed by a CMC Directa 100 system with two independent electric power steering systems, and the rudders are stainless steel, equipped with a CMC rudder angle indicator.

Fuel management is overseen by an Alfa Laval MIB 303S-13/33 fuel cleaning system. The yacht is equipped with a self-priming fire/bilge pump in the engine room, a spare emergency diesel pump for the firefighting system, and an automatic bilge system in each watertight compartment.

Electrical power is supplied at 400Vac, 50Hz, in a 3-phase configuration for main power, and 230Vac, 50Hz, in a 1-phase configuration for smaller users and technical area lighting. Onboard electricity is available at 380 and 220 Volts AC. Shore power is provided by two ASEA 45Kva AC45-3 units, offering a total power of 90 Kva, compatible with USA standards.

The yacht's battery system includes a 24Vdc battery set of approximately 480 Ah in the control room, 24Vdc batteries of 210 Ah for radio communication systems, 24Vdc batteries of 220 Ah for main engine start, and 24Vdc batteries of 110 Ah for generator set start. Emergency batteries are RTF 24Vdc with a capacity of 630 Ah. Battery charging is managed by a series of chargers,



including a 24Vdc 75 A charger for services, a 24Vdc 50 A charger for main engine start-up, a 24Vdc 25 A charger for generator set start-up, and a 24Vdc 75 A emergency battery charger.

## Navigation equipment

---

The yacht's navigation equipment is meticulously crafted to provide precise and dependable guidance on the open seas. Central to its navigation suite is the Sperry Marine magnetic compass, paired with a Sperry Marine gyro compass for heightened precision. The vessel is outfitted with a Furuno RCU 014 radar system, offering comprehensive situational awareness. For tracking and identification, a Furuno FA 170 AIS transponder, class B, is installed.

Safety is of utmost importance, and the yacht is equipped with an Ocean Signal Safesea ARH100 EPIRB and an Ocean Signal Safesea S100 SART, ensuring rapid emergency response. The monitoring systems feature three Furuno LCD 19" displays for depth, speed, and temperature readings, alongside a 4.3" multifunction display for GPS data and another for weather station information.

Weather data is provided by a dedicated weather station, and a searchlight enhances visibility. The Sperry 4000 autopilot guarantees smooth and efficient navigation, while the Furuno DS80 log and Furuno FE800 echo sounder deliver crucial data for safe travel. The yacht also includes a Furuno GP170 DGPS and GPS, as well as a Time Zero chart plotter with Time Zero touch functionality.

For communication and alerts, the yacht is equipped with a Furuno NAVTEX system and Furuno RD93 wind instruments. The loudhailer system features an air horn and ship's bell, while terrestrial TV and multiple VHF and GPS antennas ensure strong connectivity. The ship's office is furnished with a Lenovo laptop and an HP Inkjet printer, complemented by Jewel digital safes for secure storage.

The yacht's anchoring and mooring systems are robust, featuring two electrical aft warping capstans and two electrical windlasses. The anchor system includes stainless steel chain stoppers and two 225kg anchors with 165m anchor chains. A rescue crane is positioned on the foredeck, and an extended Mor Saverio hydraulic passerelle facilitates easy boarding. Underwater lights enhance the yacht's visual appeal, while Marquip sea stairs and a telescopic gangway with remote controls offer additional boarding options.

For relaxation and leisure, the yacht features a Jacuzzi and sunpads, ensuring a luxurious experience on the water.

## Galley & laundry equipment

---

The yacht's galley and laundry facilities are crafted to uphold the highest standards of culinary and domestic excellence. The galley is outfitted with a selection of top-tier appliances, including a Miele oven, microwave, and steam oven, ensuring every culinary requirement is met with precision. A Miele full induction stove offers a versatile cooking surface, while a Zanussi professional hood guarantees efficient ventilation. For refrigeration, the galley includes two True refrigerators with natural refrigerants, a Scotsman freezer, and a Scotsman ice maker, all designed to keep provisions fresh and ready. A Miele dishwasher and a Miele wine cooler with a capacity for 35 bottles enhance the galley's functionality, while a Nespresso Delonghi coffee machine ensures a perfect cup of coffee is always at hand.

In the laundry area, two Miele washing machines and two Miele tumble dryers efficiently manage all laundry needs. The main salon is equipped with a Frigonautica refrigerator, while the skylounge features a Scotsman ice maker, a Miele wine cooler, and a Miele dishwasher, ensuring refreshments are always available. On the flybridge, a Frigonautica refrigerator and a Scotsman ice maker provide additional convenience for outdoor entertaining.

The crew mess is equipped with a Miele refrigerator, ensuring the crew's needs

are well catered for. Additionally, cold garbage storage is located on the foredeck, offering a practical solution for waste management. This extensive array of galley and laundry equipment ensures that life on board is as comfortable and convenient as possible, allowing guests and crew to fully enjoy their time at sea.

## Safety & security equipment

---

The yacht's safety and security systems are meticulously crafted to provide the highest level of protection for everyone on board. It is outfitted with four life rafts, capable of accommodating up to 20 passengers, ensuring essential safety in emergencies. Additionally, the yacht is equipped with four lifesaving rings and a full complement of life jackets, guaranteeing that each person has access to personal flotation devices. A well-equipped first aid kit is also available to address any medical needs that may arise during the journey.

Regarding firefighting capabilities, the yacht features a sea-water hose system, offering a dependable method for extinguishing fires. The fire safety system includes FM200 fire extinguishers specifically for the engine room, garage, and control room, along with powder, foam, and CO2 extinguishers strategically placed throughout the vessel to ensure a swift response to any fire-related incidents.

Security on board is bolstered by a comprehensive CCTV system, with two cameras in the cockpit, three in the engine room, and one in the wheelhouse, providing continuous surveillance and peace of mind. For the protection of valuables, Jewel digital safes are installed, offering secure storage for personal items. This extensive range of safety and security equipment ensures that the yacht is thoroughly prepared to handle any situation, allowing guests and crew to enjoy their time on the water with confidence.



## Tenders & watersports equipment

---

The yacht boasts an impressive selection of tenders and watersports gear, promising endless enjoyment and adventure on the water. Central to this collection is the Williams 565 Diesel jet, a versatile and powerful tender that offers both speed and comfort for excursions. For those in search of a thrilling ride, the Sea-Doo Spark jet ski delivers exhilarating performance and agility.

For underwater exploration and excitement, the yacht is equipped with two Seabobs, allowing guests to glide effortlessly through the water.

Paddleboarding enthusiasts will appreciate the two stand-up paddleboards (SUPs), ideal for leisurely paddles or more intense workouts. Additionally, the yacht includes two inflatable kayaks, providing a stable and enjoyable experience for exploring tranquil waters.

For those who enjoy inflatable fun, the yacht features a donut and a banana, both designed to offer hours of entertainment as they are towed behind the tender. Watersports enthusiasts will also find a wakeboard and water skis on board, catering to both novices and seasoned riders eager to carve through the waves. This extensive array of tenders and watersports equipment ensures that every guest can find their preferred way to enjoy the sea, making each journey an unforgettable experience.

## Refit & maintenance notes

---

The yacht has undergone extensive refit and maintenance to ensure it remains in peak condition. Between 2022 and 2023, comprehensive work was performed at Monaco Marine, including the completion of a 5-year RINA Special Survey. This process involved removing and reinstalling the running gear, replacing cutlass bearings and mechanical shaft seals. The bilge pumps and fire system were thoroughly overhauled, as were the windlasses, ensuring all essential systems operate flawlessly. The black and grey water tanks were

meticulously cleaned, and all thru-hull fittings and valves below the waterline were replaced. The stabilizer fins received a detailed 6-year service, and the shore power converter was refurbished to maintain electrical reliability.

In 2024, further upgrades were implemented, including the installation of a fully integrated Mini ISM system, approved by the flag state, ensuring adherence to the latest safety standards. The swim platform was completely overhauled, and the yacht received a new layer of antifouling along with fresh anodes to protect the hull. The anchor windlass and gyro compass were also refurbished, ensuring precise navigation and anchoring capabilities.

Additionally, a new external rain cover was added, providing extra protection against the elements. These meticulous refit and maintenance efforts ensure that the yacht is not only in immaculate condition but also equipped with the latest technology and safety features, ready for any journey.

## Comments

---

Launched in 2018 by Sanlorenzo in Italy as Hull Number 7 of the SD126 series, Premura exemplifies the pinnacle of this series, having benefited from the refinements and enhancements made by the shipyard during the previous six builds. This careful attention to detail has resulted in a yacht where all design imperfections have been expertly resolved. Among its remarkable features, Premura includes an outdoor cinema, a Jacuzzi, and a fold-down balcony, complemented by fully electric exterior doors and additional Pullman beds. The stainless-steel galley, along with sewage treatment and fuel purification systems, and an extra hot water boiler, ensures the yacht is ideally equipped for extended cruising in utmost comfort.

Having recently completed her 5-year special surveys in the summer of 2024, Premura is in pristine condition, ready for immediate use by a new owner without any hassle or initial costs. Notably, Premura is one of the few SD126 models constructed to be fully MCA-compliant, a feature that required an

additional investment of over €400,000. This compliance allows her to be chartered commercially under any flag with a straightforward inspection. Additionally, as she is EU VAT paid, Premura is perfect for both private and charter use, offering flexibility for an owner who may wish to alter her usage. Now available for purchase, Premura's highly skilled captain and crew are ready to accommodate inspections at short notice, ensuring that potential buyers can witness firsthand the exceptional quality and readiness of this extraordinary yacht.

## Key features

---

This yacht has recently passed its 5-year special class surveys with exceptional results, confirming its adherence to the highest safety and performance standards. It includes an extended warranty on the engines and gearbox, valid through 2025, offering reassurance to the new owner. Fully outfitted with additional options and redundancy, the yacht is ideally suited for use in the USA, providing both flexibility and dependability.

The yacht's interior is modern and designed for easy customization, allowing a new owner to personalize it to their taste. The expansive exterior deck areas feature an outdoor cinema, creating an ideal environment for entertainment and relaxation. A fold-down balcony in the main salon enhances the luxurious ambiance, offering breathtaking views and a unique space to relax.

The yacht is MCA compliant, making it ready for charter if desired, and it benefits from being EU VAT paid in Malta. This combination of features ensures that the yacht is not only a luxurious and comfortable vessel but also a versatile investment, prepared to satisfy the needs of any discerning owner.

# CONTACTS

---

Shestakov Yacht Sales is a brokerage company specializing in the sale and service of yachts worldwide. The company offers services for buying and selling both new and used motor yachts, sailing vessels, and luxury superyachts. They also provide yacht registration, insurance, technical maintenance, crew selection, and charter organization services across the U.S., Canada, Latin America, the Caribbean, and the Bahamas.

The founder and lead broker of the company is Andrey Shestakov, a licensed and certified expert with extensive experience in marine engineering and shipbuilding.

The company has an extensive network of partnerships with major yacht manufacturers worldwide and provides services in multiple languages, including Russian, Ukrainian, Spanish, and English. The office is in Dania Beach, Florida, USA.

For more information and to view available yachts, you can visit the company's official website: <https://shestakovyachtsales.com>

## Contact details

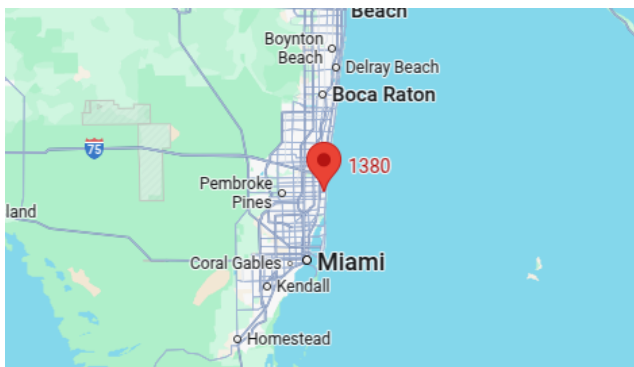
---

**Phone:** +1(954)274-4435

**Email:** [andrey@shestakovyachtsales.com](mailto:andrey@shestakovyachtsales.com)

## Address

---



1380 Weeping Willow Way, Hollywood,  
Florida 33019