

MESMERIZE - HARGRAVE



Builder: [Hargrave](#)

LOA: 125' 0" (38.10 m)

Year Built: 2013

Beam: 25' 0" (7.62 m)

Model: 125 Raised Pilot House

Max Draft: 25' 5" (7.75 m)

Price: \$5,400,000 USD Subject to change.

Cruising Speed: 12 Knots (13.81 MPH)

[See full listing on our website](#)

Location: Fort Lauderdale, United States

Max Speed: 16 Knots (18.41 MPH)

TABLE OF CONTENTS

OVERVIEW	3
SPECIFICATIONS	6
Basic Information	6
Dimensions	6
Speed, Capacities and Weight	6
Accommodations	7
Hull and Deck Information	7
Engine Information	7
GALLERY	8
DETAILED DESCRIPTION	22
CONTACTS	44

OVERVIEW

With nearly 5,000 square feet of interior living area, approximately 320 GT of volume, and a remarkable 7'9" of headroom across the principal lounges, the Hargrave 125' Raised Pilothouse MESMERIZE delivers the presence, comfort, and ease of a much larger luxury motor yacht. Thoughtfully arranged with six distinct social zones that welcome up to 60 guests, she is equally at home hosting sophisticated entertaining as she is undertaking extended cruising, making her a compelling raised-pilothouse superyacht for owners who prize versatility.

That generous interior volume and expansive headroom foster an openness seldom achieved in this class, giving MESMERIZE the sensation of a substantially bigger superyacht. Launched originally as GIGI II, she is a standout within the Hargrave fleet for her unusually capacious interior and highly social layout. Under attentive ownership and the care of an experienced crew, she presents an excellent buying opportunity; full specifications, systems notes, and equipment details are available in the "Other Details" section of this listing.

Conceived for both private ownership and charter potential, the arrangement harmonizes serene day-to-day living with superb gathering spaces for hosting. The raised pilothouse design elevates the helm above the main deck to prioritize guest living areas, enhancing the yacht's naturally open, airy ambiance while preserving the confident sightlines and command of a serious cruising yacht.

A hallmark of her main deck is the expansive country-style forward galley, an inviting hub with a large island, casual seating for six, and a television, crafted to feel like a modern residential kitchen where family and friends instinctively congregate. Especially favored by American owners who value a sociable galley over a closed-off crew workspace, this concept underscores the yacht's

convivial spirit. Throughout the interior, the 7'9" headroom, broad passageways, and large windows combine to create a bright, comfortable environment on par with far larger motor yachts.

Accommodations aboard MESMERIZE are impressively scaled for a yacht of her length, with four well-appointed staterooms designed for comfort and privacy. Each suite features a king-size berth, abundant wardrobe space, and a spacious en-suite bath, a calibre of amenity that appeals to both private guests and charter clients. The full-beam master makes full use of the yacht's 25-foot beam, forming a serene owner's sanctuary with mirrored his-and-hers en-suites separated by a generous walk-in shower, plus two walk-in closets that readily accommodate extended stays and long-range cruising.

Crew spaces are intelligently planned to elevate service and discretion, with three crew cabins each offering a private en-suite head, a rare luxury in this size range that meaningfully improves life on board. Dual crew access from the swim platform and the port-side cockpit walkway ensures discreet, safe circulation during guest functions or while underway, upholding the polished service standard expected of a top-tier charter yacht.

Entertaining was clearly central to the design brief, with six distinct social areas that let guests spread out yet remain effortlessly connected from bow to stern. The generous headroom carries outdoors beneath tall hardtops on both the cockpit and flybridge, providing welcome shade and excellent airflow. With multiple gathering venues inside and out, up to 60 guests can enjoy the yacht's entertaining spaces in full comfort whether cruising or at anchor, while the flybridge further entices with a spa tub and bar area that set the scene for sunset cocktails and relaxed, al fresco living.

Built by Hargrave Yachts, renowned for custom construction, robust engineering, and enduring durability, MESMERIZE—delivered originally as GIGI II—has been cared for by long-term professional crew and attentive owners from the outset. Her specification reflects the pedigree expected of a premium

flybridge motor yacht, including an expansive country kitchen, all king-size beds, two flybridge wet bars, discreet dual crew access serving 3 crew cabins with 3 crew heads, and the notable scale of 320 GT / 5,000 sq ft of interior space.

Mechanical and cosmetic stewardship are up to date, highlighted by a complete 4,000-hour generator service (04/2026) encompassing heat exchangers, injectors, valve adjustment, and filters, along with a Spot Zero watermaker and purification system. Enhancements continue with flybridge granite countertops replaced in 2020; exhaust risers and heat blankets renewed port in 2021 and starboard in 2023; steering rams and hydraulic hoses serviced in 2023; dripless shaft housings and seals replaced in 2023; and new teak on the swim platform and cockpit steps in 2023. Aesthetic and navigational updates include Release Marine aft deck tables (2021), a Garmin 22" GPSMAP 8622 flybridge display, Naiad stabilizer fins rebuilt (2023), a Boston Whaler 150 Super Sport tender with 60HP Mercury outboard, a pair of Yamaha 11' jetskis, and a Fusion stereo on the flybridge with JL speakers.

Underway, twin Caterpillar C32 engines (1825 HP) provide the reliable muscle for a comfortable 12-knot cruise and approximately 16-knot top speed. The semi-displacement hull grants a sweet spot of efficiency, range, and performance, delivering the poised, dependable ride expected from a serious bluewater superyacht while keeping operating manners refined and confidence high in a range of conditions.

Purpose-built for comfortable cruising, MESMERIZE marries Hargrave's proven engineering with exceptional interior scale and genuinely practical entertaining spaces. Consistently maintained and presented with care, she is offered today ready to cruise with her next owner, an elegant raised-pilothouse luxury yacht whose specification and upkeep make her stand out in the modern superyacht marketplace.

SPECIFICATIONS

Basic Information

Model Year:
2013

Country:
United States

Year Built:
2013

Dimensions

LOA:
125' 0" (38.10 m)

Max Draft:
25' 5" (7.75 m)

Beam:
25' 0" (7.62 m)

Speed, Capacities and Weight

Cruise Speed:
12 Knots (13.81 MPH)

Water Capacity:
700 Gallons

Max Speed:
16 Knots (18.41 MPH)

Fuel Capacity:
8000 Gallons

Gross Tonnage:
320 Pounds

Accommodations

Total Heads:

5

Crew Cabin:

3

Hull and Deck Information

Hull Material:

Fiberglass and Plastic Yachts

Hull Designer:

N/A

Deck Material:

Fiberglass

Interior Designer:

N/A

Hull Configuration:

N/A

Engine Information

Engines:

2

Engine Type:

Inboard

Manufacturer:

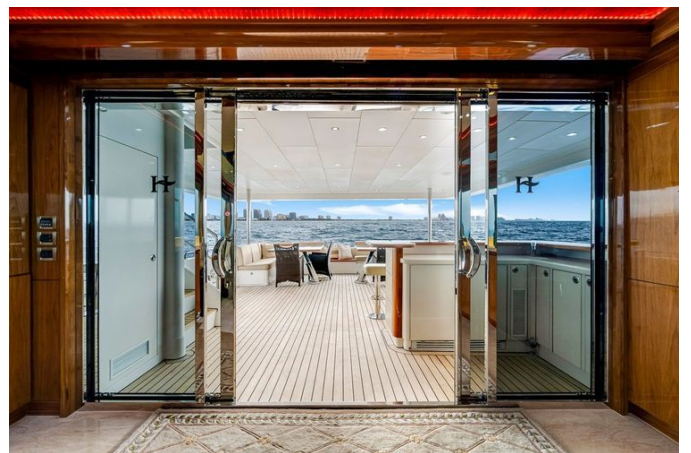
Caterpillar

Fuel Type:

Diesel

GALLERY











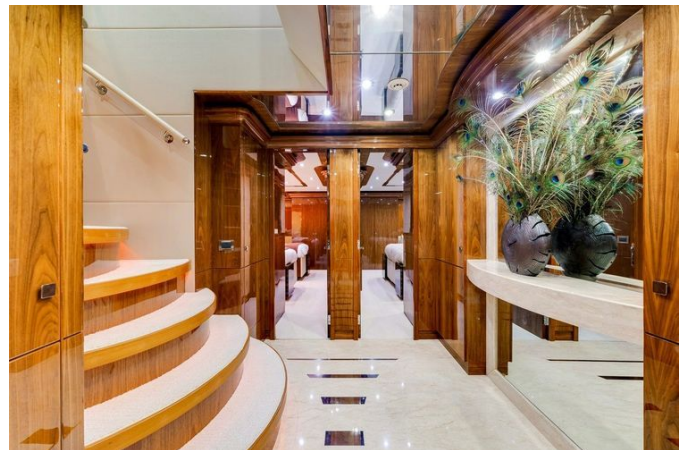


















DETAILED DESCRIPTION

Design influences and color palette

Envisioned to deliver a contemporary interior with great balance, this design showcases clean, sophisticated cabinetry lines with an enduring appeal, equally suited for charter or private use. A striking interplay of contrasting surfaces—Gloss Walnut wood, Espresso and Taupe Zebra veneer accents, Sculptured glass, and Cream Kaduna Marble (Royal Oyster)—forms an abstract, sculptural composition that is truly refreshing. Throughout, all guest and social areas are generously proportioned and perfectly appointed.

Salon

The main salon is a glamorous, contemporary sanctuary—inviting, aesthetically refined, and composed with a clean, chic sensibility. Details expressed in the built-in cabinetry are echoed above in dramatic ceiling soffits, while custom-upholstered pieces feel luxuriously plush yet impeccably tailored. At the aft entrance, the space unfolds across sixty s/f of Cream Kaduna marble laid in sumptuous slabs. Flanking the foyer, large squared corner cabinets anchor and strengthen the room: to starboard, a fully equipped bar with dedicated storage, ice, and sink disappears completely when closed; to port, a matching cabinet cleverly conceals the crew companionway along the vessel's exterior. Both are adorned with gorgeous forty-four mirrored recesses featuring marble shelves and sculptures from Hebi. Forward toward the dining salon, a center cabinet integrates a TV, complemented by a companion cabinet presenting an art glass panel, while a center-opening glass door aft blurs the boundary between interior and deck.

Gloss walnut woodwork sets a rich, luminous tone, heightened by espresso

and taupe zebra accents and soffit designs with dramatic corner detailing. The seating arrangement features two 10' sofas facing a sixty-inch TV on a hi/lo lift, and the salon/dining console showcases an art glass panel that unites the two areas with sculptural finesse. The dining ensemble comprises eight custom-designed dining chairs gathered around a custom YIBS walnut table detailed with a zebra band. Practical elegance abounds in the perimeter walnut crown with integrated AC grill and etched glass privacy doors to port and starboard, while two mirrored art niches, forty-four high, provide striking display moments.

Fabrics and finishes are curated to perfection: sofa upholstery in JF Fabrics Champion pairs with lounge chairs and ottomans in JF Fabrics Drama; Roman shades are rendered in Globaltex Fortuna, Mocha. Throw pillows layer texture and color with Glant Couture Basket Weave in Limestone and Beacon Hill Romandie in Tourmaline. Cabinet hardware is Sagastune satin nickel push-pulls, recessed lighting is by Cantaluppi in satin nickel, and illumination is enriched by four Sonneman Plinth 6055.50 lamps in black nickel. The result is a salon and dining area that marries artful design with consummate functionality, delivering a setting as indulgent as it is meticulously engineered.

Galley

Designed as both a professional-grade food preparation space and a welcoming hub for social gatherings, the galley is finished with the same fine-quality wood, hardware, and craftsmanship found throughout the vessel. Expansive counter space frames the room, which is bathed in natural light from windows on three sides, while a large, comfortable forward settee offers seating for eight. A true walk-in pantry measuring three feet by four feet adds purposeful storage, and the large center island introduces a second sink, an ice maker, a recycling station, additional Subzero refrigerator drawers, and one hundred thirty-two square feet of storage.

Every furnishing has been selected for performance and elegance: Aurora Granite countertops complement Porcelanosa V50915001 porcelain plank flooring in a driftwood tone, with gloss walnut cabinetry providing a warm, contemporary contrast. Appliances by Subzero and GE support serious culinary ambitions, and the square brush nickel hardware with Push Pulls by Lamp pairs seamlessly with brush nickel Cantaluppi lighting. The settee and bar stools are upholstered in Textillery Barcelona 51 Ivory Leather for enduring comfort and style. Waterworks are equally robust, featuring three Franke sinks, one Grohe pot filler, and three Lady Lux/Grohe satin nickel faucets.

Day head

Conceived as a functional work of art, the day head is centered around a Graff Luna satin nickel wall mounted faucet standing 39 inches high, its sculptural form framed by a vertical marble backdrop set just a few inches wider than the water supply to create a striking architectural reveal. A mirrored ceiling enhances the sense of volume above gloss walnut walls and cabinetry, while a forty eight inch wide asymmetrical walnut cabinet anchors the space with tailored poise. The Cream Kaduna marble vanity is paired with a sculptural brushed nickel faucet and a Virgo/Sintra Espresso vessel sink, the refined palette carried seamlessly to the floor where a solid slab of Cream Kaduna marble is artfully inlaid with stainless steel—both three quarter inch square tiles and one inch by one inch accents—sprinkled and set to shimmering effect. The result is a cohesive, gallery like composition in which every element, from the vertical marble wall panel behind the faucet to the satin nickel fixtures and gloss walnut joinery, harmonizes around the signature 39 inch Graff Luna centerpiece.

Port, starboard hall, and dog house

The starboard hallway serves as a gracious passage to the day head, galley, pilot house, and VIP, its floor a striking work of abstract art with a dominant field of Cream Kaduna marble and liner inlays of Pearlato Suevo. Mirroring this on the port side, the same floor design marks the entrance to the guest stairs and carries forward to the on-deck stewardess walk-in pantry and laundry facility, all framed by cabinetry in rich Gloss Walnut. Here, an additional Sub Zero 427G wine cooler provides capacity for 132 bottles.

In the dog house laundry, functionality is elevated by its own dedicated AC unit and generous preparation and folding areas for the stew. Practical performance comes from a GE 3.1 cubic feet front-load washer paired with a GE 5.7 cubic feet front-load dryer, while the dog house flooring is finished in four-inch teak plank for durability and warmth. Across the port and starboard halls, the flooring specification remains Cream Kaduna and Pearlato Suevo marble, uniting these spaces with a cohesive, luxurious aesthetic.

Pilot house

The pilothouse is a multifunctional, purpose-built helm station anchored by a Stidd helm chair upholstered in Ultraleather in Milkweed, complemented by a captain's desk with dedicated space for filing correspondence. It also serves as a serene lounge where owners and guests can relax while traveling or socializing, taking in a sweeping 270-degree view of the seascape. Furnishings elevate the experience with sofas by J. Robert Scott in Myconos/Mica with Ebony, handrails wrapped in Textillery Barcelona 51 Ivory Leather over stainless, throw pillows by RM Coco in 2010CB/Cork and WO83112/12, wall upholstery by Majilite in Legend/Elegance cream, and a floor laid in four-inch teak planks.

Lower foyer and stairs to guest staterooms

The stair descending to the guest area is conceived for an easy, open ambiance, its entry at the top flowing directly from the Starboard Hallway to a small balcony with an open railing of art glass and stainless steel. As you approach the lower foyer, the stairs widen gracefully from 36" to 54", with the final steps sweeping into a large semi-circle that forms a grand entrance. Perfectly centered on a mirrored console, the staircase aligns with a console top finished in a thick 5" slab of Cream Kaduna, the composition surrounded by mirror and crowned with a striking sculpture whose profile is elegantly reflected. Underfoot, the foyer presents a contemporary composition of marble with stainless steel strips inlaid, while all four corners provide purposeful storage for linens, towels, refrigeration for beverages, and cleaning supplies. The space is dressed in wall upholstery of Majilite-Legend/Elegance/Cream and anchored by Kaduna Cream marble flooring with custom stainless steel inlays. The mirrored console is executed in gloss walnut, its mirror outlined by a Kaduna Cream marble 4" frame, and the ceiling is detailed with a perimeter crown and a large open semi-circle to maintain the airy volume. Handrails are wrapped in Textillery-Barcelona 51 Ivory Leather with stainless steel accents, and a Uline 1175 refrigerator discreetly serves the foyer for effortless hospitality.

Master stateroom

The master suite echoes the refined aesthetics of the main salon, with the bed purposefully composed as the centerpiece while every surrounding element frames and amplifies its luxurious presence through fabulous cabinetry details and impeccable craftsmanship. The headboard wall continues the dramatic design with 18" wide vertical panels of the Zebra placed horizontally, 60" high over each nightstand, while the upholstered center ties into a detailed ceiling

soffit that mirrors the MS soffit and elegantly frames the bed.

Fabrics and furnishings elevate the ambiance: wall upholstery in Majilite-Legend/Elegance/Cream; flooring in wool carpet; sconces by Fine Art 790050; bedspread and shams by JF Fabrics/Champion; Euro shams by J Robert Scott/Cannon Plaid/Celadon; neck roll in Kravet-Rufiji/Fieldstone; Roman shades in Kravet-9774-16 (Linen and silver Lurex); and lighting by Cantaluppi/Satin Nickel.

Master bath

The master bath is an elegant His and Hers arrangement anchored by a centrally positioned large shared shower. Each very large vanity is complemented by pairs of sconces centered on the mirrors for proper viewing, with a total of four Ashley21309 sconces providing plenty of lighting—natural and daylight—throughout the space. The heads are positioned outboard in each bath and enhanced by a unique art glass privacy panel. A refined marble palette unifies the room, repeating Pearlato Suevo and Cream Kaduna with stainless steel inlays across the flooring, while gloss walnut cabinetry delivers abundant storage. The Pearlato Suevo vanity tops feature a distinct four-inch front edge, and the all-marble shower offers a dual entrance and recessed storage for bath items, completing a sanctuary of thoughtful design and impeccable finish.

VIP forward stateroom

Positioned forward of the galley in the bow, the VIP stateroom is reached via its own private entrance and stairway, thoughtfully set apart from other guest areas to enhance privacy while mirroring the yacht's refined storage and aesthetic detailing. Generous accommodations include two closets measuring 3'+ each, a large dresser with eight drawers, and abundant additional storage,

while a bespoke headboard presents a striking criss-cross composition of horizontal and vertical zebra wood. VIP forward stateroom fabrics and furnishings include wall upholstery in Majilite—Legend/Elegance/Cream; flooring in wool carpet TBD; lamps—Cantaluppi/SN; a bedspread—JF Fabrics—Bombay/93J4841; Euro shams—Beacon Hill—Flash Point/Silver Screen; T. pillows—Lee Jofa—Gp&GB—Fretwork/Teal; Roman shades—RM Coco—Wilco/Linen; and lighting—Cantaluppi/Satin Nickel.

VIP forward bath

Clad in Cream Kaduna marble with Emperador Dark accents, the VIP forward bath exudes timeless elegance while delivering thoughtful functionality. Two rectangular sinks anchor a uniquely conceived vanity that blends open shelving with enclosed cabinetry and generous drawers for abundant storage. Outboard, beneath the porthole, an expansive countertop extends the working surface and adds further storage and dedicated vanity space. Underfoot, Cream Kaduna marble flooring is refined by an Emperador Dark inlay, presenting an inset border of rich dark brown marble, while the vanity tops continue the theme in Emperador Dark marble for a cohesive, luxurious finish. Warm illumination is provided by two Ginger 2881SN sconces, complementing the gloss walnut cabinets, and the shower is enclosed by a glass frameless door and enhanced with an Emperador Dark footrest and seat.

Port and starboard guest staterooms

The guest staterooms meet every need of visiting friends or family, with large TVs set within armoire-style entertainment cabinets. Outboard, a generous curved settee invites lounging, adjacent to a very well-appointed five-foot closet complete with shoe racks, additional drawer space, and abundant hanging room. At first glance, the bed presents as a delightful king-size,

showcasing beautiful upholstery and Zebra wood detailing; it converts easily to twin beds and, in either configuration, offers full walk-around capability. Wide lower drawers hold all extra bedding, ensuring the guest closet remains free for personal belongings.

Fabrics and furnishings are impeccably curated: wall upholstery in Majilite—Legend/Elegance in Cream—complements wool carpet underfoot, while Sonneman Mitra SN lamps and Cantaluppi lighting in satin nickel set a refined tone. The bedspread is Maxwell Neo #4 Stone, with T. pillows to starboard by Rodolph MMW 8350H and to port by Romo Casca Hemp. Roman shades are finished to starboard in RM Coco Live Dust and to port in Duralee 14225 Taupe. The guest baths are appointed with marble floors and vanities in Cream Kadun.

Crew area

Thoughtfully appointed and positioned aft, the crew area offers an enclosed entrance from the port deck and a second entry from the stern. Inside, a comfortable crew settee anchors a welcoming lounge, complemented by a small kitchen area with cabinet storage, a sink, and a full-height refrigerator; a dedicated washer/dryer ensures effortless turnarounds for the team.

The captain's stateroom is a true suite, featuring a dresser, a workstation, a 42-inch flat-screen TV, a large double-door closet, and a queen bed with a full walkaround, plus a hidden Pullman bunk to accommodate an additional crew member during deliveries; the suite is further enhanced by its own private bath. The other two crew staterooms each provide two twin bunks and a private bath, delivering comfort and privacy for extended passages.

In total, accommodations encompass three staterooms, three baths, a lounge area, and a kitchenette. Premium finishes include teak flooring, gloss walnut walls, and Aurora Granite countertops, while the equipment suite features a GE 2700 washer/dryer, a GE GSCS3KGYSS refrigerator, and a Kohler/Compass

sink.

Crew staterooms

The captain's stateroom is a true suite, appointed with a dresser, a dedicated workstation, a 42-inch flat-screen TV, a large double-door closet, and a queen bed with full walkaround access, plus a concealed Pullman bunk to accommodate an additional crew member during deliveries. The captain's suite also includes a private bath. The other two crew staterooms each feature two twin bunks and a private bath.

Aft deck

Designed to host large gatherings with ease, the expansive aft deck invites both relaxed lounging and elegant dining. The grand gloss teak aft table, measuring 126" by 56", seats fourteen in comfort; remove its center section to create two cocktail tables for a more casual atmosphere. A professionally equipped bar anchors the space, set before a 32" Aquios flat TV and attended by four contemporary square bar stools. Both the stools and the bar are upholstered in a pale mist-tone Aqua Leather—Spinneybeck Aqua Leather in Mist 606 on the stools and Spinneybeck Aqua Leather in Mist606 on the bar front—beautifully outlined by polished stainless steel. The bar is crowned with a lustrous gloss teak top, while the deck is laid in natural teak underfoot. Settee and teak chair cushions in Fabric Tent/Sail clothe/Shara and Delaney and Long throw pillows in Tender/Mist add refined comfort. Entertainment and service are enhanced by the Uline CLR 2160 ice maker, and movement between decks is effortless via custom stainless steel spiral stairs leading to the fly bridge. A ceiling height of 7'-9" preserves an airy sense of volume throughout.

Flybridge

The flybridge is conceived as a social haven and command center in one, with the steering station to starboard featuring a double bench and a matching double bench to port, both facing forward for effortless conversation underway. This expansive deck invites large gatherings, comfortably accommodating dining or lounging for fourteen, and is anchored by a professional service bar that seats six. Aft of the bar, a dedicated cooking station delivers sixteen linear feet of preparation and buffet surface; beneath it sit two Subzero refrigerator drawers, a 30" ice cooler for beverages, an electric grill, a gas grill, a utility sink, and abundant storage. The decking under cover is laid in teak, presented in its natural state for timeless elegance. Opposite the buffet, a generous spa tub is paired with its own petite bar and two bar stools for intimate, uninterrupted conversations, while a large sun pad with deep storage lies close at hand. Aft, four lounge chairs with small side tables set the stage for sun-soaked relaxation.

The flybridge furnishings are curated for both performance and polish, including refrigeration by three Subzero drawers 700BR, an ice maker Uline CLR2160, a wine cooler Uline 2175WC, and two Edgestar FP860 freezers. Cooking amenities are complemented by a grill TBD and a cook top Elag BGR530426. The spa tub is Spa City Sunbelt/Apollo, and the flooring is teak natural to match the deck's refined character. Seating is highlighted by eight custom stainless-steel bar stools upholstered in Majilite Ovation Cappuccino, with custom stainless-steel helm benches in Majilite Ovation Cappuccino to mirror the aesthetic. Settees are dressed in Fabric Tent Dupion Sand, while throw pillows in Bangladesh Dune with Samuel and Sons Firewood trim and additional throw pillows in Great Outdoors Aqua Velvet Coco complete the elevated, coastal palette.

Factory installed equipment

This yacht is specified with two-inch deck fills for fuel and water, a 700-gallon stainless steel water tank, and a V-shaped keel with longitudinal stringers. The hull is hand-laid fiberglass with stringers vacuum-bagged with foam-core reinforcement, with the stringers bonded to the hull and encapsulated in several layers of glass cloth and resin. The deck and superstructure are engineered with foam-cored reinforcement beneath fiberglass, supported by FRP bulkheads and interior structural components bonded to the hull, including bulkheads and frames, with an FRP main deck and floors. The exterior receives teak on the main decks, FRP exterior portholes, and a fiberglass swim platform. All handrails, stanchions, and fittings are crafted from stainless steel 316 alloy, complemented by stainless steel cleats and eight chocks, stainless-steel corner hawse pipes with rollers and cleats at the port and starboard sides of the aft deck, and a stainless steel frame hatch on the foredeck with a grey Lexan cover, along with a built-in hand-held shower on the swim platform.

Underway, performance is elevated by the upgrade to long four-inch stainless steel shafts equivalent to Aquamet 22, zincs on the shafts, rudders, and transom as needed, five-blade Faster bronze propellers, main bronze struts for the four-inch shaft, and one additional pair of bronze struts supporting the long four-inch shaft, plus an FRP stern tube for four-inch shafts, an emergency tiller, stainless steel rudders, and fiberglass engine beds bonded to the hull with the load distributed on steel channels. Acoustic comfort is ensured by a double layer of sound and heat insulation in the engine room bulkhead forward, aft, and at the ceiling, additional insulation space as required for the main and lower deck ceilings, a third layer of insulation at the master bulkhead, and white perforated insulation panels in the engine room. Seamless operation comes through easy access to all helm dashboard controls and gauges, remote windlass operation from the pilothouse and flybridge,

Raycor 1000 FG fuel filter/water separators for each engine, two in total, a hydraulic bow thruster Model 16 upgraded to 60 HP, hydraulic steering by Hynautic adaptable to autopilot, and an engine alarm system for low pressure and high temperature supplied by CAT. The engine room features 24v lights and 110v power receptacles, four each, along with a custom underwater engine exhaust with idle by-pass, a Headhunter 200 GPD waste treatment system, and a fresh water filling faucet, while VIMAR sockets and switches serve all rooms, and a 220v, 110v, 60Hz electrical system with color-coded wiring throughout powers the vessel. Reliability is further enhanced by seven Rule sump pumps with float switches, a Y-valve for dockside pump-out from the holding tank, eight 200 amp/hr batteries for engine and ship power, two separate 120 amp/hr batteries for the generator, all batteries housed in FRP battery boxes, a main electrical panel with separate AC power control and circuit breaker panel, and 110-volt duplex receptacles located throughout the vessel, including the engine room.

Interior and lifestyle details include indirect rope lighting under valances in the salon, staterooms, and galley; polished stainless-steel interior door hardware and door stops; satin nickel interior drawer and cabinet pull hardware; a recessed tray ceiling in the salon; lights in closets on micro-switches; Cantaloupe 24v brushed-nickel ceiling lights; and Roman shades in each stateroom, the main salon, and the galley. The master and VIP staterooms feature beds on hydraulic cylinders, there are large storage areas on the forward deck, and a boat panel indicator provides at-a-glance status. The galley is finished with a granite countertop, while all bathrooms are appointed with marble or granite countertops, and the master boasts a full walk-in shower. Exterior appointments include black Textilene front window covers, flybridge vinyl seat covers, a helm and passenger seat on the flybridge, and a Lexan hatch from the aft deck to the flybridge deck. At the helm, CAT instruments display tachometer, oil pressure, engine temperature, transmission pressure, and hours. Shore-side connectivity is assured by two

city water inlets and two TV/telephone inlets, while fresh-water washdowns are provided at three locations—bow, aft deck, and flybridge. The underwater body is protected by two coats of Sea Hawk bottom paint, systems service is simplified by a sea chest, and visibility in all conditions is supported by three windshield wipers with blades and a digital control panel.

Interior equipment

Rich walnut timber sets a warm tone throughout the interior, paired with Majlite upholstery and finished with custom recessed hardwood edging and bespoke crown molding that flow through every space. A leather-wrapped handrail lines the stairway from the main deck to the VIP and guest cabins, complemented by two customized leather-wrapped stainless steel handrails in the pilothouse and an upgraded leather-wrapped handrail on the stairway accessing the pilothouse from the hallway. Comfort is elevated with fifty-one additional decorator pillows, while Vimar electrical switches with twenty-one dimmer switches and Cantalupi matte brushed nickel wall lamps in the VIP, port, and starboard guest cabins refine the ambiance.

Everyday ease is assured with a Nutone CV450 central vacuum system with eight outlets and SanDam K-Pro insulation between the VIP wall and the master cabin for superior privacy. Security and convenience come from five safes in the cabins. The galley benefits from a WDI soundproof floor, undermount sinks for both the galley and the on-deck head, two custom bar stools, and smart storage solutions including a Rev-A-Shelf chrome blind-corner pullout with full extension and a Rev-A-Shelf white recycling center with heavy-duty drawer slides and full extension.

Bathing spaces are appointed with Headhunter heads, nine in total, and an Awl Grip finish in six shower stalls. The salon is richly detailed with a marble floor at the entry from the aft deck, marble-topped niches, marble countertops to port and starboard flanking the dining table, a marble top on the forward

console, and a marble bar top at the starboard aft bar, complemented by a Marzi PD undermount bone sink and a Grohe Allure 32128 000 faucet.

The day head impresses with a mirrored ceiling, one Virgo Sintra Espresso sink, one Graff Luna satin nickel faucet, and a striking seven-inch-wide marble panel behind the faucet, alongside one Graff satin nickel towel ring, one Graff satin nickel toilet paper holder, and one Grall satin nickel robe hook. Specialty wall covering and a marble floor with stainless steel inlays, executed to the floor design, complete this refined space.

In the master suite, two custom angled shoe racks enrich the closet, a granite-top nightstand anchors the room, and three-quarter-inch Platinum vinyl strips define the bed headboard. The master head showcases a marble shower seat with marble on the shower walls and floor, specialty stainless steel floor inlay ties on the marble floor, two textured glass panels flanking the toilet to port and starboard, three shelves in a niche with sea rail inside the shower, and four Ashley Lighting 21309 brushed nickel sconces that add a tailored glow.

The forward VIP enjoys a marble nightstand top, marble shower and floors, a marble bathroom and shower floor, a marble shower seat, a Kohler sink, a Graff G-2301 satin nickel sink faucet, and a Grohe 27 010 3000 brushed nickel shower system. The port and starboard guest cabins echo the luxury with marble nightstand tops, marble shower seats, marble shower floors, and marble bathroom floors, plus a sliding mechanism allowing two single beds to reposition for flexible arrangements. Glass doors serve the master shower, the VIP, and both guest cabins. Thoughtful accessories include one Ginger 504L soap caddy and one Ginger 505 shampoo caddy in each of the VIP, port, and starboard guest showers; Graff G-2301 satin nickel sink faucets in the VIP, port, and starboard guest bathrooms and in the two master bathrooms; and C.R. Laurence shower door handles—one each—in the VIP, port, and starboard guest, and the two master bathrooms. Towel management is superior with

Graff satin nickel towel bars—three in the VIP, two in the port guest, two in the starboard guest, and four in the master bathrooms—while one Equip satin nickel toilet paper holder and one satin nickel robe hook are fitted in the VIP, port, and starboard guest baths and in each of the two master bathrooms. U-channel hardware secures shower glass walls into the marble in the VIP, port, and starboard guest, and master showers. Additional highlights include two Ginger 2881 satin nickel sconces in the VIP, port, and starboard guest bathrooms, a Grohe Aquatower 3000 shower system in the master, port, and starboard guest showers, Kohler Verticyl K-2882-96 sinks in the port and starboard guest bathrooms, and drain covers in the VIP, master, port, and starboard guest baths.

Crew and captain's areas are equally well appointed with a framed mirror for the captain's dresser, Kohler Ladena K-2214 sinks in the captain, forward, and crew bathrooms, a granite shower seat in the captain's shower, four fold-down TVs in the forward and aft crew cabins, and teak panel flooring in the captain and crew cabins and lounge. Illumination is delivered by six stainless steel Cantalupi Ragno reading lights in the captain, forward, and aft crew spaces. The forward and aft crew showers each feature a granite seat, with a Kohler Compass K-2298-96 sink in the aft crew bathroom. In the crew lounge, a Marzi PD:48 100R bisque sink pairs with one Grohe 33153 stainless steel sink faucet, complemented by an upgraded hi/low table with a cushion that allows the tabletop and settee to convert into a berth, and a granite lounge countertop. Circulation spaces are elevated by a marble frame with mitered corners in the lower foyer, a marble foyer floor with stainless steel inlays, and marble hallway floors to port and starboard in accordance with the hallway flooring design, alongside three custom sliding doors in the port and starboard side hallways. Overhead, the headliner fabric is General Plastic Voyager Mystic off white 422773 with tricot foam backing, totaling 200 yards.

At the helm, precision meets comfort with a five-inch DANFORTH compass in

the upper helm and one Stidd Slimline low-back stainless steel helm chair with cupholder in the pilothouse.

Audio and visual equipment

At the hard top, a Shakespeare 2030 TV Antenna anchors reception, paired with a Shakespeare 2025 CP Controller at the Pilot House, a Digital 500 Series 8 ft AM/FM Antenna, and a Concord TV Distribution Board with AM/FM. Satellite capability is delivered by a KVH 2011 Tracvision HD7 USA housed in an M9 dome, complemented by a KVH2011 Tracvision M9 empty dome, two Edson 6" towers for KVH M9, and a KVH HD7 Tuner Exp Kit.

In the main salon, a Samsung UN60D8000 is mounted with a Motivated Design 65" PLSM/LCD Popup Lift Bot Mount and a Motivated Design Remote Kit Vimar Wall DC Relay, all driving a Bose Lifestyle V35 White flush installation supported by a Samsung BD-D6700 3D Blu-ray Player, a DirecTV HD DVR Receiver – Lease, a TrippLite HTR07-1U, and a Middle Atlantic Sliding Rack Assembly. The dining area and salon benefit from two Speakercraft Accufit CRS7 One speakers, a Bose SA-2 Stereo AMP 120V Black, and a Bose RC-355 V Class Remote RF.

On the aft deck, two JL Audio M770 CCX Marine Speakers – White are driven by two Bose SA-3 Lifestyle Stereo Amplifiers, with a Bose RC-355 V Class Remote RF providing effortless control. In the pilothouse, two Speakercraft Accufit CRS7 One speakers pair with a Bose SA-3 Lifestyle Stereo Amplifier and a Bose RC-355 V Class Remote RF.

In the galley, entertainment comes via a Samsung 32" HD LED TV UN32D6000 on a Concord TV Mount, with a DirecTV HD DVR Receiver – Lease, a Samsung BDC5500 Blu-ray Player, and a Sonance FS-23 IPOD Dock, all amplified by two Bose SA-3 Lifestyle Stereo Amplifiers and managed with a Bose RC-355 V Class Remote RF; audio fills the space through four Speakercraft Accufit CRS7 One speakers and a JL Audio M770 CCX Marine Speaker -White. At the bow, a Bose

SZ-3 Lifestyle Stereo Amplifier works with a Bose RC-35S V Class Remote RF. Up on the flybridge, a Fusion AM/FM/IPOD Stereo feeds four JL Audio M770 CCX marine Speakers –White and is complemented by two Fusion MS-WR600C Wired Remote-Chrome units at the flybridge helm and bar, alongside a Fusion 500 Watts 4 Channels Marine unit.

In the VIP, a Samsung 40" HD LED TV UN40D6400 on a Concord TV Mount is paired with a Samsung BDC5500 Blu-ray Player, a DirecTV HD DVR Receiver – Lease, and a Sonance FS-23 IPOD Dock. For the port and starboard guest staterooms, there are two Samsung 40" HD LED TVs UN40D6400 with two Concord TV Mounts, two DirecTV HD DSS Receivers – Lease, two Samsung BDC5500 Blu-ray Players, and two Sonance FS-23 IPOD Docks.

In the master, a Samsung 50" HD LED TV UN40D6400 is secured on a Concord TV Mount and integrated with a Bose Lifestyle V35 White flush installation, a Samsung BDC550 Blu-ray Player, a DirecTV HD DVR Receiver – Lease, and a Middle Atlantic Sliding Rack Assembly. In the captain's cabin, a Samsung 40" HD LED TV UN40D6400 on a Concord TV Mount is joined by a DirecTV HD DSS Receiver – Lease and a Sonance FS-23 IPOD Dock.

For Crew one and two, four Audiovox drop-down 10 LCD DVD TVs are complemented by two Xantech AV-61 units and two DirecTV Basic DSS Receivers – Lease. In the crew lounge, a Samsung 32" HD LED TB UN32D6000 on a Concord TB Mount partners with a Samsung BDC5500 Blu-ray Player and a Sonance FS-23 IPOD Dock.

Appliances

The main salon is served by a U-Line CLR2160 black ice maker, while the lower foyer features a Dometic CR-1110U/F refrigerator. In the galley, a Sub-Zero BI-42 stainless steel refrigerator is complemented by two Sub-Zero 700BR white refrigerator drawers and a U-Line CLR2160 stainless steel ice maker. The

GE Profile suite includes a PP975BMBB black cook top paired with a PT916SMSS stainless steel oven, a JV930SCBR stainless steel hood, a PVM1870SMSS stainless steel microwave, a GDWT160RSS stainless steel dishwasher, and a GCG1580RSS stainless steel trash compactor. Waste management is handled by three GE Profile GFC720F satin nickel disposals with three Incinerator Sink Top Switch satin nickel disposal switches. Freshwater fixtures comprise a Franke KBX120-43 stainless steel sink with two Blanco 157-140 ST stainless steel hand-spray faucets, an Incinerator F-HC1100 satin nickel instant-hot dual-temperature faucet fed by an Incinerator SST-FLTR stainless steel instant-hot tank and filter, plus a Franke GNX-110-16 stainless steel island sink served by a Grohe LadyLux PRO31042 SDO satin nickel pot filler and a Grohe Atrio 20 074 AVO satin nickel island faucet.

In the doghouse, a GE WSXH208HWW white 120V/60HZ washer and a GE DSXH43EFWW white 120V/60HZ dryer are joined by a Sub-Zero 427G Classic Stainless wine cooler. The crew lounge is equipped with a GE Profile PSIC5RGXBV black refrigerator, a Panasonic NN-SD3773 stainless steel microwave, and a GE WSM2700DWW white washer/dryer.

On the aft deck, a Sub-Zero UC-15I ice maker without drain pump with overlay panel-FRP keeps refreshments flowing. Up on the flybridge, a U-Line 2175WC wine cooler stands ready alongside two Sub-Zero 700BR white FRP-face refrigerators by the hot tub, Sub-Zero 700BR white FRP-face 115V AC/60HZ refrigerator drawers behind the bar, a Sub-Zero UC-15I without drain pump overlay panel-FRP 115V AC/60HZ ice maker, and a U-Line CLR2160 black 115V AC/60HZ ice maker. Completing the open-air amenities are a Fire Magic 3C-S1S1P-A deluxe stainless steel gas BBQ grill and an Edgestar FP800 grey 115V AC/60HZ freezer.

Electronics

At the heart of the pilothouse, six KEP Marine KEP-L 19 sunlight-readable

displays anchor a command environment driven by two Furuno NAV 3D BB MFD processors, complemented by a Furuno GP33 WAAS color GPS. Control is effortless thanks to a Nauticomp panel mount mouse and a Concord RF Logitech keyboard and mouse, while a Concord computer tower stands ready for expansion. Overhead, the hard top carries a Furuno NAV 3D twelve kilowatt, seventy two nautical mile, six foot radar array, two Furuno BBWGPS WAAS GPS antennas, and a Furuno PB 200 weather sensor, alongside a Newmar Hailer Horn 60/40 and a Digital 500 Series sixteen foot VHF antenna. The radar arch adds a Furuno NAV 3D four kilowatt, forty eight nautical mile, three and a half foot array to ensure layered awareness in all conditions.

The lower helm is equipped with two Furuno RD323 NMEA color repeaters, a Furuno FI50 wind display and sensor, the Furuno Navpilot 700 autopilot paired with a Furuno PG 500R heading sensor and its dedicated Furuno Navpilot HRP 17 24 pumpset in the engine room, and a Furuno FM 4000 twenty five watt VHF with its mic for crisp communication. Here, a Sea See quad switcher with keyboard provides instant access to onboard video, while the NMEA 2000 backbone is properly finished with two Furuno NMEA2000 Terminator Micro MA units. Forward on the hull, a Furuno 235 MSLF 235 kHz smart sensor delivers precise depth data, and a Concord 24 to 12 VDC five amp power supply supports seamless integration.

On the upper helm, a KEP Marine KEPL 15 sunlight readable display partners with a Furuno NAV 3D twelve inch MFD display, two Furuno NAV 3D BB control keyboards for MFDBB one and two, and a Nauticomp panel mount mouse dedicated to the NAV computer. Data is presented with two Furuno RD33 NMEA color repeaters—one configured for depth, speed, and temperature and the other for depth only—while a Furuno NAVPILOT 700 second station keeps the yacht on track. Communication is assured with a Furuno FM 4000 twenty five watt VHF and a Furuno FM 4000 remote mic at the second station. The flybridge complements the suite with a Digital 500 Series sixteen foot VHF

antenna and a Newmar Hailer Horn 60/40, and a Sea See keypad for the quad switcher gives fingertip control of camera views.

Surveillance and situational awareness extend throughout the yacht with two Sea See DND 60 Wide White Ball Cam Re units mounted on the aft deck and two Sea See DND 60 Wide White Ball Cam units in the engine room, all routed through a Sea See Video AMP 1 x 4 and an Extron eight input, eight output switcher for flawless distribution. AIS coverage is delivered by the Furuno FA 150 AIS system paired with a Digital 500 Series four foot Marine AIS antenna, while power quality and versatility come from a Concord 110 AC to 12 VDC ten amp supply, a Newmar 32 12 50 DC DC converter, and a Concord DC AC pure sine wave inverter. For confident night operations, two ACR RCL 100D 24 VDC spotlights stand ready to pierce the darkness.

Exterior equipment

The aft deck is designed for effortless entertaining, featuring custom seating and a bespoke wet bar crowned with a granite top and upholstered in Aqua Leather with a stainless steel band and cuff. Forward of the bar, one 44" TV enhances onboard enjoyment, while four custom stainless steel stools, a Scandvik 10242 stainless steel sink, and one Scandvik 70130 polished chrome sink faucet complete the bar's professional specification. A teak dining table is supported by two Aritex Hi/Low electric angled table bases with slides, and a removable teak tabletop can be positioned between the seats on both the aft deck and flybridge to tailor the social layout. Practical details include a locker for the boarding ladder, four wicker deck chairs, and an automatic/manual aft deck door with a stainless steel frame and tinted glass. Five two inch U-shaped handrails line the swim platform for secure movement, and the deck package is finished with upgraded three inch wide teak planks across the flybridge, aft deck, and bathing platform. At the ready for line handling are two Maxwell VC3500 capstans on the aft deck, one on each side, complemented by a

Freeman watertight 30" x 30" access hatch to the swimming platform and a robust stainless steel engine room door.

On the flybridge, the bar ensemble is equally comprehensive with a Franke GNX-110-16 stainless steel sink, a stainless ten inch sink, a Scandvik 70103 polished chrome sink faucet, and a Scandvik 10242 stainless steel sink serving the forward bar. The wet bar is attended by six stainless steel bar stools, while an additional flybridge bar adjacent to the hot tub provides two more bar stools. Surfaces gleam with a gloss teak bartop for the flybridge bar and an elegant bartop at the hot tub. Dining and lounging flexibility comes courtesy of one aft flybridge table with a teak top and an Aritex Hi/Low electric angled table base for the curved seating next to the hot tub, two Aritex Hi/Low electric angled table bases with slides for the flybridge table, and one Aritex Hi/Low electric angled table base for the aft flybridge table. A custom flybridge cabinet on the starboard side accommodates a grill and appliances, while one navigation seat on the flybridge deck benefits from a stainless steel railing used as a footrest for the post and the starboard navigation seat on the boat deck. Command is centralized at a custom flybridge helm console under a hard top, and leisure reaches new heights with a custom hot tub box and an FRP storage box with a hinged lift-up panel, a sun pad on top, and FRP seating on the boat deck. The hot tub itself features access steps, a safety rail, an integrated seat, an access hatch to the storage space below, and dedicated covers and cushions. A custom stairway with integrated storage provides convenient passage from the aft deck to the flybridge.

Forward and throughout the exterior, thoughtful enhancements abound, including a non-skid, enclosed FRP box with a seat for bow storage, eight waterproof bow deck lights, and two quartz floodlights for powerful illumination, complemented by fifty Cantalupi Diana 105 stainless steel exterior lights that set a refined evening ambiance. Signatures of distinction include two stainless steel Hargrave 16" logos and thirteen custom openable fiberglass portholes measuring 24" x 12". The hull is appointed with extra two

and three-eighths inch oval stainless hull banding with a solid wood insert and a four inch offset, while structure and safety are elevated with reinforcement for a davit and installing a standpipe, two FRP recessed lift ring holders for life rings, a Kahlenberg D-OA air horn, and a custom pillar at the sidewalk ways. For secure movement under way, the aft deck and flybridge deck handrails are upgraded to staple two inch stainless steel exterior handrails.

CONTACTS

Shestakov Yacht Sales is a brokerage company specializing in the sale and service of yachts worldwide. The company offers services for buying and selling both new and used motor yachts, sailing vessels, and luxury superyachts. They also provide yacht registration, insurance, technical maintenance, crew selection, and charter organization services across the U.S., Canada, Latin America, the Caribbean, and the Bahamas.

The founder and lead broker of the company is Andrey Shestakov, a licensed and certified expert with extensive experience in marine engineering and shipbuilding.

The company has an extensive network of partnerships with major yacht manufacturers worldwide and provides services in multiple languages, including Russian, Ukrainian, Spanish, and English. The office is in Dania Beach, Florida, USA.

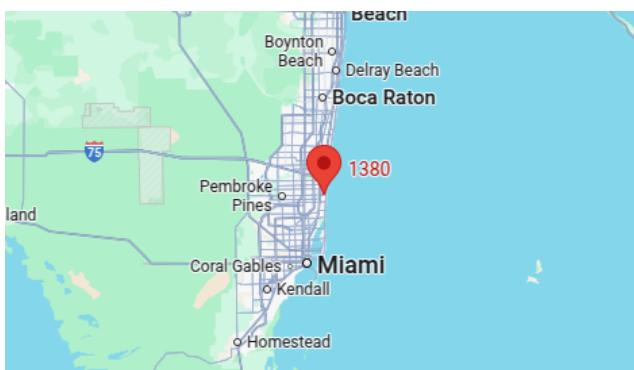
For more information and to view available yachts, you can visit the company's official website: <https://shestakovyachtsales.com>

Contact details

Phone: +1(954)274-4435

Email: andrey@shestakovyachtsales.com

Address



1380 Weeping Willow Way, Hollywood,
Florida 33019