



MESMERIZE - HARGRAVE



Builder: [Hargrave](#)

LOA: 125' 0" (38.10 m)

Year Built: 2013

Beam: 25' 0" (7.62 m)

Model: 125 Raised Pilothouse

Cruising Speed: 15 Knots (17.26 MPH)

Price: \$6,495,000 USD Subject to change.

[See full listing on our website](#)

Location: Key Largo, United States

Max Speed: 16 Knots (18.41 MPH)

If you would like to buy a yacht **MESMERIZE - HARGRAVE** or would like help answering any questions concerning purchasing, selling, or chartering a yacht, please call **+1(954)274-4435** or click here on <https://shestakovyachtsales.com>

TABLE OF CONTENTS

OVERVIEW 3

SPECIFICATIONS 4

 Basic Information 4

 Dimensions 4

 Speed, Capacities and Weight 4

 Accommodations 4

 Hull and Deck Information 5

 Engine Information 5

GALLERY 6

DETAILED DESCRIPTION 19

CONTACTS 49

OVERVIEW

Rewritten Description

The 2013 Hargrave 125 Raised Pilothouse, named "Mesmerize," represents the pinnacle of opulence for those who relish hosting grand events. With over 5,000 square feet of luxurious living quarters and four expansive king-sized guest suites, it is perfect for personal leisure or chartering. Each space radiates a sense of openness, offering lavish accommodations for up to eight guests.

The yacht's European styling and sweeping wrap-around windows provide breathtaking views from every angle. Sophisticated elements such as Cream Kaduna marble, high-gloss walnut cabinetry, and custom finishes elevate the onboard atmosphere.

Built to Hargrave's highest standards of quality and safety, this 125 Hargrave yacht features recent upgrades, including a Spot Zero water purification system, factory-serviced engines, and newly refinished teak decks. It is also fully equipped with a Boston Whaler tender and Jet Skis to enhance your nautical adventures.

This vessel is ready for immediate acquisition, inviting new owners to set sail on their next voyage in style and comfort. Step aboard the 2013 Hargrave 125 Raised Pilothouse and experience the ultimate in yachting luxury. Whether you're in the market to purchase a yacht or explore yacht sales at the current boat location, this extraordinary vessel is waiting.

SPECIFICATIONS

Basic Information

Category:
Motor yachts

Year Built:
2013

Model Year:
2013

Country:
United States

Dimensions

LOA:
125' 0" (38.10 m)

Beam:
25' 0" (7.62 m)

Speed, Capacities and Weight

Cruise Speed:
15 Knots (17.26 MPH)

Water Capacity:
700 Gallons

Max Speed:
16 Knots (18.41 MPH)

Fuel Capacity:
8000 Gallons

Accommodations

Total Heads:
5

Crew Cabin:
3

Hull and Deck Information

Hull Material:

Fiberglass and Plastic Yachts

Hull Designer:

N/A

Deck Material:

Fiberglass

Interior Designer:

N/A

Hull Configuration:

N/A

Engine Information

Engines:

2

Engine Type:

Inboard

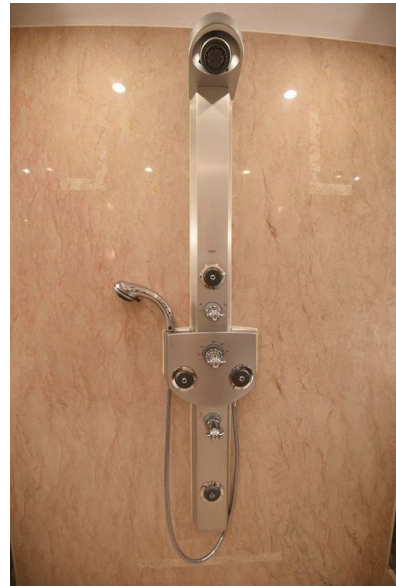
Manufacturer:

CAT

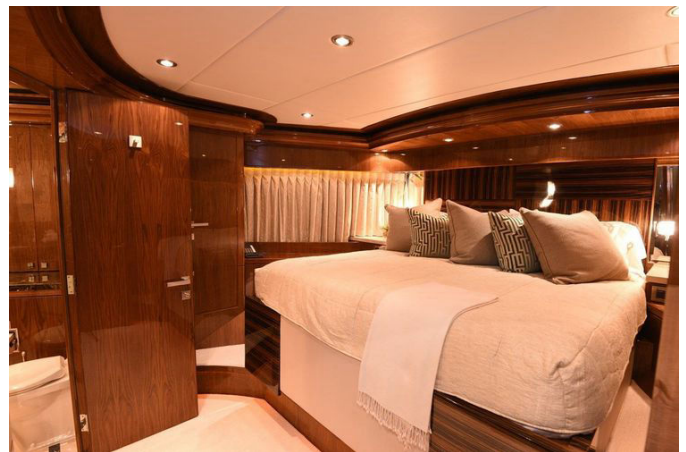
Fuel Type:

Diesel

GALLERY

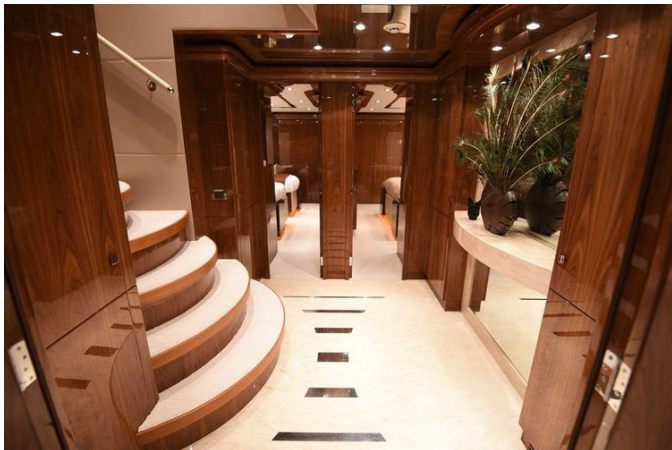


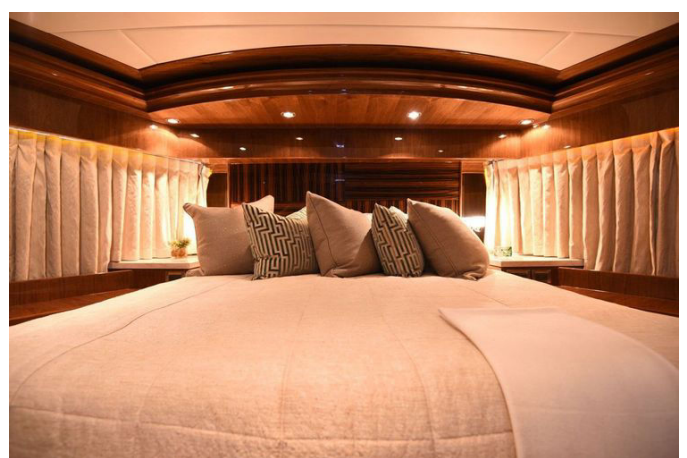
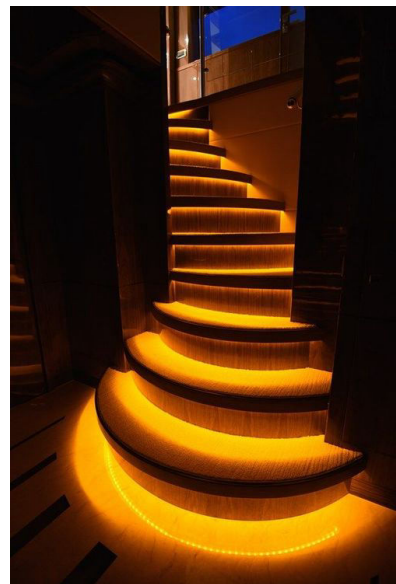
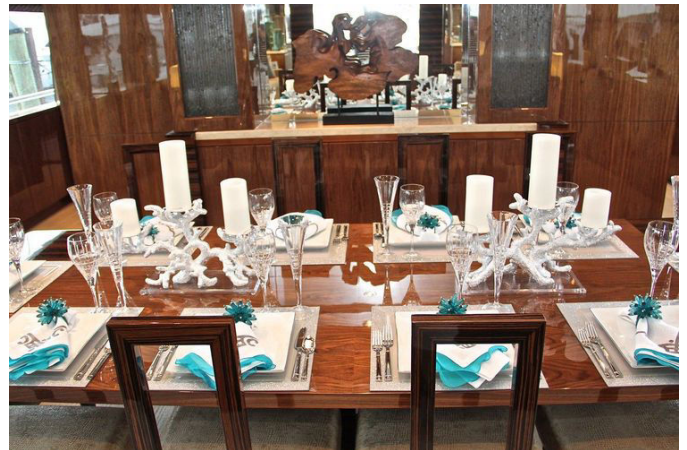




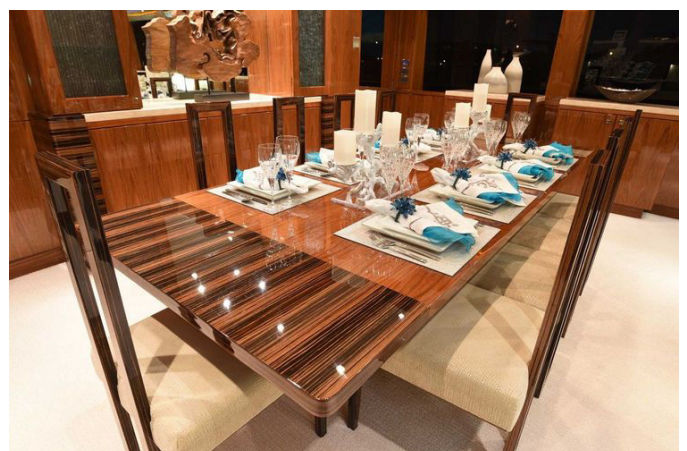






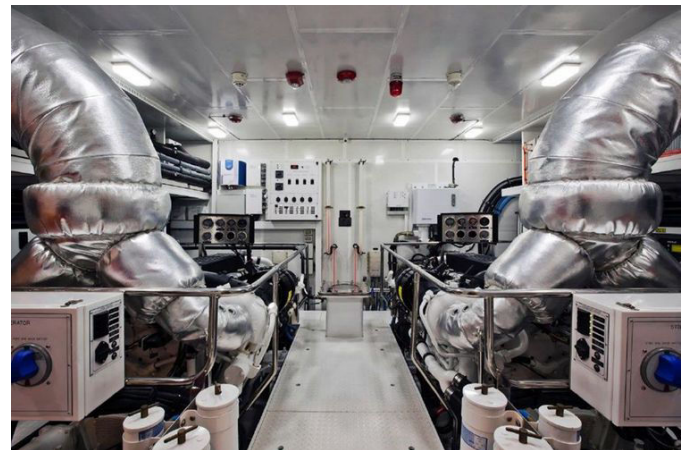


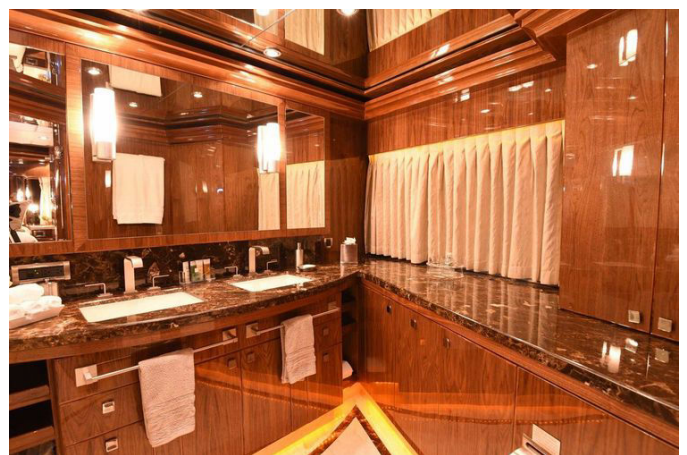












DETAILED DESCRIPTION

Salon

Rewritten Description

The Main Salon is a stunning and modern area that radiates a welcoming and visually appealing vibe. The intricate design is showcased in the built-in cabinetry, which is reflected in the striking ceiling soffits, forming a unified and opulent setting. The custom upholstered pieces are plush and embody a sleek, stylish aesthetic, enhancing the space's overall elegance.

Upon entering from the aft, you are greeted by the luxurious slabs of Cream Kaduna marble flooring. The entrance foyer is bordered by large squared corner cabinets that not only define but also enhance the space. On the starboard side, the squared cabinet functions as a discreet bar, complete with essential amenities like storage, ice, and a sink, all cleverly hidden when not in use. The port cabinet cleverly conceals the crew companionway on the vessel's exterior. Both cabinets feature stunning 44-inch mirrored recesses with marble shelves, adorned with sculptures from Hebi.

Moving towards the Dining Salon, a central cabinet houses a TV and showcases a panel of exquisite Art Glass. The Main Salon and Dining area are adorned with gloss walnut wood, accented by espresso and taupe zebra details. The space is furnished with two 10-foot sofas, and the entrance is highlighted by 60 square feet of Cream Kaduna marble. A 60-inch TV is mounted on a Hi/Lo mechanism, seamlessly integrating entertainment into the luxurious setting. The dining area is equipped with eight custom-designed dining chairs and a dining table that is a masterpiece of custom design by YIBS, crafted from walnut with a zebra band.

The salon's soffit designs feature dramatic corner details, and the center opening door glass on the aft adds to the grandeur. Two mirrored art niches, each 44 inches high, add a touch of sophistication, while the perimeter walnut crown and AC grill provide a seamless finish. Privacy is ensured with etched glass doors on both the port and starboard sides.

The fabric and furnishings in the Main Salon and Dining area are meticulously chosen to enhance the luxurious ambiance. The sofa fabric is from JF Fabrics, specifically the Champion line, while the lounge chairs and ottomans are upholstered in JF Fabrics' Drama collection. The dining chairs are custom-designed, and the dining table is a bespoke creation by YIBS, featuring walnut with a zebra band. Roman shades from Globaltex in Fortuna-Mocha add a touch of elegance, and the throw pillows are a blend of Glant's Couture Basket Weave in Limestone and Beacon Hill's Romandie in Tourmaline.

The cabinet hardware is from Sagastune, featuring satin nickel push pulls, and the lighting is recessed, provided by Cantaluppi in satin nickel. The space is illuminated by four Sonneman-Plinth lamps in black nickel, completing the sophisticated and inviting ambiance of the Main Salon.

Galley

Rewritten Description

The galley is meticulously crafted to function not only as a professional culinary workspace but also as a warm and inviting area for social interactions. It is adorned with the same premium wood, hardware, and craftsmanship that is evident throughout the rest of the yacht, ensuring a cohesive and elegant aesthetic. The galley offers generous counter space and includes a genuine walk-in pantry measuring 3 by 4 feet, providing ample storage for all cooking essentials. Natural light pours in through windows on three sides, creating a

bright and welcoming environment. At the forward end, a spacious and comfortable settee accommodates eight, making it perfect for casual dining or conversation.

The focal point of the galley is a large central island, equipped with a second sink, an ice maker, a recycling station, additional Subzero refrigerator drawers, and an impressive 132 square feet of storage. The countertops are made from Aurora Granite, offering both durability and elegance, while the flooring features a Porcelanosa porcelain plank wood design in a driftwood hue, adding a hint of rustic charm. The cabinetry is finished in gloss walnut, enhancing the overall sophisticated appearance.

The galley is outfitted with top-tier appliances from Subzero and GE, ensuring that all culinary tasks are executed with ease and precision. The hardware, featuring square brush nickel push pulls by Lamp, adds a contemporary flair, while the lighting, also in brush nickel by Cantaluppi, provides ample illumination. The settee and bar stools are upholstered in Textillery's Barcelona 51 ivory leather, offering both comfort and style. The galley is equipped with three Franke sinks, and the faucets include a pot filler by Grohe and three Lady Lux faucets in satin nickel, also by Grohe, ensuring both functionality and elegance in this beautifully designed space.

Day head

Rewritten Description

The Day Head is a true design marvel, centered around the exquisite Graff faucet, a 39-inch tall wall-mounted fixture in satin nickel. This striking piece is set against a marble backdrop, slightly wider than the water supply, turning it into a functional work of art. The floor is crafted from a solid slab of Cream Kaduna marble, tastefully inlaid with $\frac{3}{4}$ -inch square stainless steel tiles,

infusing a modern touch of sophistication.

The furnishings in the Day Head are equally remarkable. A 48-inch wide asymmetrical walnut cabinet offers generous storage, while the Cream Kaduna marble vanity introduces a luxurious element. The sculptural brush nickel faucet is beautifully complemented by the vertical marble wall panel behind it, creating a seamless blend of materials. The mirrored ceiling amplifies the sense of space and light, reflecting the gloss walnut walls and cabinets that bring warmth and richness to the room.

The sink is a Virgo/Sintra-Espresso vessel, perfectly matched with the Graff/Luna satin nickel faucet, which stands at an impressive 39 inches tall. The flooring, featuring Cream Kaduna marble with stainless steel inlays, completes the elegant and sophisticated design of the Day Head, making it a standout feature of the yacht.

Port, starboard hall, and dog house

Rewritten Description

The starboard hallway acts as a corridor leading to the day head, galley, pilot house, and VIP section. Its floor is a visual marvel, akin to a piece of abstract art. The primary hue is Cream Kaduna marble, elegantly highlighted with inlays of Pearlato Suevo. The port side reflects this stunning floor design, guiding you to the guest stairs and onward to the on-deck stewardess walk-in pantry and laundry area. This section is fitted with an additional wine cooler, capable of holding 132 bottles, ensuring every event is perfectly catered for.

The dog house, which also functions as a laundry space, is thoughtfully equipped with its own dedicated AC unit, creating a comfortable setting for preparation and folding tasks. The furnishings in these areas are of the highest caliber. The hallway flooring combines Cream Kaduna and Pearlato Suevo

marble, crafting a luxurious and unified appearance. The cabinetry is made from gloss walnut, infusing warmth and elegance into the space.

The laundry area features a GE washer with a 3.1 cubic feet front load and a GE dryer with a 5.7 cubic feet front load, ensuring efficient and effective laundry management. The Sub Zero wine cooler, model 427G, can store up to 132 bottles, making it a must-have for wine aficionados. The dog house flooring is constructed from 4-inch teak planks, offering durability and a hint of classic nautical charm. This blend of design and functionality makes the port, starboard hall, and dog house an essential part of the yacht's sophisticated and well-equipped interior.

Pilothouse

Rewritten Description

The pilothouse serves as a multifunctional and dedicated helm station, crafted to fulfill the demands of both navigation and leisure. It includes a Stidd chair for the Captain, upholstered in Ultraleather in a Milkweed shade, ensuring comfort and support on extended journeys. The Captain's desk is cleverly integrated, providing additional space for organizing correspondence and handling crucial tasks. This area is not only practical but also a retreat where owners and guests can relax while traveling, enjoying a breathtaking 270-degree view of the surroundings.

The furnishings in the pilothouse are of outstanding quality. The sofas, designed by J. Robert Scott, are upholstered in Myconos/Mica with Ebony accents, offering a luxurious seating experience. Handrails are wrapped in Textillery's Barcelona 51 ivory leather on stainless steel, adding a touch of elegance and safety. The throw pillows, from RM Coco, in designs 2010CB/Cork and WO83112/12, enhance comfort and style in the space.

The walls are covered in Majilite's Legend/Elegance cream, creating a sophisticated and tranquil atmosphere. The flooring is composed of 4-inch teak planks, providing durability and a timeless nautical look. This blend of design elements ensures that the pilothouse is not only a command center but also a welcoming space for socializing and relaxation.

Lower foyer and stairs to guest staterooms

Rewritten Description

The staircase leading down to the guest quarters is crafted to convey a sense of spaciousness and ease. At the top, the entrance opens into the starboard hallway, which features a small balcony and open railing made from art glass and stainless steel. As you descend towards the lower foyer, the stairs elegantly expand from 36 inches to 54 inches, with the final steps forming a large semi-circle, creating a grand entrance into the foyer. The stairs are perfectly aligned with a mirrored console, topped with a substantial 5-inch slab of Cream Kaduna marble, encircled by a mirror. Atop the console rests a magnificent sculpture, beautifully mirrored.

The foyer floor is a breathtaking marble composition, showcasing a modern design with inlaid stainless steel strips. Each of the four corners of the foyer is cleverly utilized for storage, accommodating linens, towels, refrigeration, beverages, and cleaning supplies. The wall upholstery is made from Majilite's Legend/Elegance in a cream hue, adding a sophisticated touch to the space. The flooring is crafted from Kaduna Cream marble with custom stainless steel inlays, enhancing the luxurious ambiance.

The console is constructed from gloss walnut, framed with a 4-inch border of Kaduna Cream marble around the mirror. The ceiling features a perimeter crown with a large open semi-circle, adding to the grandeur of the space.

Handrails are wrapped in Textillery's Barcelona 51 ivory leather with stainless steel, offering both elegance and safety. The area is equipped with a Uline 1175R refrigerator, ensuring refreshments are always at hand. This blend of design and functionality makes the lower foyer and stairs to the guest staterooms a truly exceptional part of the yacht's interior.

Mechanical equipment

Rewritten Description

The mechanical systems on this yacht are engineered to deliver peak performance and dependability. Central to the climate control is a 15-ton Chilled Water Cruisair A/C System, comprising five 3-ton units, complete with advanced controls and Smart Start technology. This system is enhanced by plumbing unions for supply and return on the A/C raw water pump, facilitating quick connections or easy access through a junction box.

The yacht is powered by two 44 kW CAT generators with sound shield water drop exhausts, ensuring quiet and efficient operation. The electrical setup includes four 100 amp Dolphin/Sentry AC/DC light transformers, ensuring consistent power distribution throughout the vessel. The engine room is fortified with watertight bulkheads, boosting safety and structural integrity. Stability is assured with the Naiad Stabilizers Model 525-2.50 Roll Stabilizer System, featuring two 22 square foot fins and DATUM controllers with a Naiad Box Hull fairing part. Fuel management is handled by two Orderfer fuel transfer pumps, model 990RHN76, and a Fill-Rite 901-1.5" Flow Meter for precise fuel transfer. The Reverso GP706-24 Oil Change pump simplifies maintenance for engines and generators.

Safety features include a security main switch on A/C power, double Racor filters for engines, and a Sea-Fire automatic fire extinguisher system with

detection and monitoring capabilities, featuring ten sensors. The yacht is equipped with two Glendenning 100 amp cable masters on the port and starboard sides of the transom, each with a 125-foot cord, and Glendenning Controls with fixed control heads for both upper and lower helm stations, plus a remote at the aft deck and boat deck.

Additional features include three watertight doors, a Jabsco emergency crash clutch pump with four pickup mufflers for the main engine bypass, and two 80-gallon water heaters with an in-line recirculation "hot water" pump. The Sentry Battery Chargers provide power with one 100 amp 24V, one 30 amp 24V, and one 30 amp 12V units. The engine room is equipped with Delta-T filters and fans, and a custom FRP air intake vent box with a clean open finish, ensuring no stainless steel grill is mounted against the hull side.

The yacht features Tide Seal dripless rudders and shaft logs, safety rails around twin engines, and a total fuel capacity of 8,000 US gallons, allowing fuel fill from both sides of the vessel with an overfill reservoir in a recessed locker. The CAT gauges have been moved from the side of the engine to the top-mount, and there is a stairway for accessing the engine room from the aft port watertight door.

The yacht is also equipped with six custom stainless steel 30" x 15" vertical portlights and twelve custom size 6" x 48" freeing ports. An additional Headhunter M5-115AC Mach 5 Pump with a 1" line to the hot tub under the crew lounge ensures ample water supply. A single masthead light on the hardtop displays forward of the amidships base, and the anchor pocket system has been upgraded with dual Maxwell VWC4500 hydraulic windlasses, two 250 lbs anchors, and two 300-foot high tensile chains.

Finally, the yacht benefits from Caterpillar Platinum Extended service coverage until May 2020 or 3,200 hours, providing peace of mind and ensuring the longevity of the mechanical systems.

Exclusions

Rewritten Description

In the sale of this yacht, specific items are excluded to respect the owner's personal preferences and needs. The owner's personal belongings will not be part of the transaction, ensuring their private possessions remain with them. Furthermore, the jet skis and tender currently on board are not included in the sale. These exclusions provide the new owner with the opportunity to customize the yacht with their own equipment and personal touches, facilitating a smooth transition into their new maritime lifestyle.

Factory installed equipment

Rewritten Description

The factory-installed equipment on this yacht exemplifies its superior craftsmanship and meticulous attention to detail. Fuel and water are easily accessible through 2-inch deck fills, while a 700-gallon stainless steel water tank ensures a generous supply for extended journeys. The yacht's V-shaped keel with longitudinal stringers provides stability and strength, complemented by a fiberglass hand-laid hull and stringers that are vacuum-bagged with foam core reinforcement. These stringers are bonded to the hull and encapsulated in multiple layers of glass cloth and resin, ensuring durability and resilience.

The deck and superstructure are reinforced with foam core beneath fiberglass, and the FRP bulkheads and main deck floors add to the structural integrity. Teak adorns the main exterior decks, providing a classic and elegant finish, while FRP exterior portholes and a fiberglass swim platform enhance the yacht's functionality. All handrails, stanchions, and fittings are crafted from

stainless steel 316 alloy, ensuring longevity and resistance to the elements. Stainless steel cleats and chocks, along with corner hawse pipes with rollers and cleats on the aft deck, provide secure mooring options.

The foredeck features a stainless steel frame hatch with a grey Lexan cover, and a built-in handheld shower on the swim platform adds convenience. The yacht is equipped with upgraded long 4-inch stainless steel shafts equivalent to Aquamet 22, with zincs on shafts, rudders, and transom as needed. Five-blade Faster bronze propellers and main bronze struts for the 4-inch shaft, along with an additional pair of bronze struts for support, ensure smooth and efficient propulsion.

The FRP stern tube for the 4-inch shafts, emergency tiller, and stainless steel rudders contribute to the yacht's robust design. Fiberglass engine beds are bonded to the hull with load distributed on steel channels, and the engine room features a double layer of sound and heat insulation on the forward, aft, and ceiling bulkheads. Additional insulation is provided for the main and lower deck ceilings, with a third layer added to the master bulkhead for enhanced comfort.

The helm dashboard offers easy access to all controls and gauges, with remote windlass operation available from both the pilothouse and flybridge. Each engine is equipped with a Raycor 1000 FG fuel filter/water separator, and the hydraulic bow thruster Model 16 60 HP has been upgraded for improved maneuverability. Hydraulic steering by Hynautic is adaptable to an autopilot, and the engine alarm system for low pressure and high temperature is supplied by CAT.

The engine room is well-lit with 24v lights and 110v power receptacles, and features a custom underwater engine exhaust with idle bypass. A Headhunter 200 GPD waste treatment system and fresh water filling faucet in the engine room ensure efficient waste management and water supply. VIMAR sockets and switches are installed in all rooms, and the electrical system operates on

220v, 110v, and 60Hz with color-coded wiring throughout.

Rule sump pumps with float switches, a Y-valve for dockside pump-out from the holding tank, and a comprehensive battery system with eight 200 amp/hr batteries for engine and ship power, and two separate 120 amp/hr batteries for the generator, ensure reliable operation. All batteries are housed in FRP battery boxes, and the main electrical panel features separate AC power control and circuit breaker panels.

The yacht is equipped with 110-volt duplex receptacles throughout, including in the engine room, and features indirect rope lighting under valances in the salon, staterooms, and galley. Polished stainless steel interior door hardware and door stops, along with satin nickel interior drawer and cabinet pull hardware, add a touch of elegance. The salon boasts a recessed tray ceiling, and lights in closets are activated by micro switches.

Cantaloupe 24v ceiling lights in brushed nickel, Roman shades in each stateroom, main salon, and galley, and beds on hydraulic cylinders in the master and VIP staterooms enhance the yacht's luxurious interior. Large storage areas on the forward deck, a boat panel indicator, granite countertops in the galley, and marble or granite countertops in all bathrooms add to the yacht's functionality and style.

The master stateroom features a full walk-in shower, and black Textilene front window covers provide privacy and protection. Flybridge vinyl seat covers, helm and passenger seats on the flybridge, and a Lexan hatch from the aft deck to the flybridge deck ensure comfort and convenience. CAT instruments at the helm, city water inlets, TV/telephone inlets, and fresh water washdowns at three locations—bow, aft deck, and flybridge—enhance the yacht's operational capabilities.

The yacht is protected with two coats of Sea Hawk bottom paint, and a sea chest and white perforated insulation panels in the engine room contribute to its durability. Three windshield wipers with blades and a digital control panel

ensure clear visibility in all conditions, making this yacht a truly exceptional vessel.

Interior equipment

Rewritten Description

The interior of this yacht exemplifies luxury and precision, showcasing exquisite walnut wood throughout. Majlite upholstery adds a layer of elegance, while leather-wrapped handrails offer both style and safety on the stairways leading to the VIP and other guest cabins from the main deck. Additional custom stainless steel handrails wrapped in leather enhance the pilothouse, and the stairway to the pilothouse from the hallway has been upgraded with leather-wrapped handrails for a refined touch.

Custom hardwood edges with recesses and crown molding are present throughout the vessel, contributing to the sophisticated ambiance. The yacht is adorned with 51 additional decorative pillows, and Vimar electrical switches with 21 dimmer switches offer customizable lighting. Cantalupi matte brushed nickel wall lamps illuminate the VIP, port, and starboard guest areas, while the Nutone CV450 Central Vacuum System with eight outlets ensures cleanliness.

Soundproofing is enhanced with SanDam K-Pro insulation between the VIP wall and the master cabin, and five safes are strategically placed in the cabins for secure storage. The galley features a WDI soundproof floor, under-mount sinks, and two custom bar stools. The Rev-A-Shelf chrome blind corner pullout shelf and white recycling bins with heavy-duty drawer slides provide efficient storage solutions.

The yacht is equipped with nine Headhunter heads, and the shower stalls boast an Awl Grip finish. Marble flooring graces the entry of the salon from the aft deck, and marble tops are found in niches, on the dining table, and on the

forward console in the salon. The starboard aft bar in the salon features a marble bar top, complemented by a Marzi Sink PD undermount bone sink and a Grohe Allure 32128 000 faucet.

The day head is a masterpiece with a mirror ceiling, a Virgo Sintra Espresso sink, and a Graff Luna satin nickel faucet. The wall behind the day head faucet is adorned with 7-inch wide marble, and Graff satin nickel accessories, including a towel ring, toilet paper holder, and robe hook, complete the space. Specialty wall coverings and a marble floor with stainless steel inlays enhance the day head's elegance.

In the master suite, custom angled shoe racks, a granite top nightstand, and a ¾-inch platinum vinyl strip headboard add luxury. The master shower features a marble seat, marble walls, and floor, with specialty stainless steel floor inlay ties. Textured glass panels and shelves with sea rails in the master bathroom shower provide functionality and style. Ashley Lighting brushed nickel sconces illuminate the space.

The VIP suite boasts a marble nightstand top, marble shower and floors, and a Kohler sink with a Graff G-2301 satin nickel faucet. The Grohe 27 010 3000 brushed nickel shower system ensures a luxurious experience. The port and starboard guest bathrooms feature marble nightstand tops, shower seats, and floors, with sliding mechanisms allowing single beds to slide for versatility.

Glass doors for the master shower, VIP, and guest cabins add a modern touch, while Ginger soap and shampoo caddies provide convenience. Graff satin nickel sink faucets and towel bars, along with C.R. Laurence shower door handles, enhance the bathrooms' functionality. The Grohe Aquatower 3000 shower system in the master, port, and starboard guest showers offers a spa-like experience.

The captain's quarters and crew areas are equally well-appointed, with teak panel flooring, fold-down TVs, and granite shower seats. Kohler sinks and Grohe faucets ensure quality and style. The crew lounge features a granite

countertop and a Hi/Low table with a cushion for versatility. Marble frames with mitered corners and marble flooring with stainless steel inlays adorn the lower foyer and hallways.

The headliner fabric is General Plastic Voyager Mystic off white with tricot foam backing, providing a soft and elegant finish. A Danforth compass in the upper helm and a Stidd Slimline Low Back stainless steel helm chair with a cupholder in the pilot house complete the interior's luxurious and functional design.

Audio & visual equipment

Rewritten Description

The audio and visual systems on this yacht are crafted to deliver an unparalleled entertainment experience throughout the vessel. On the hard top, the Shakespeare 2030 TV antenna is installed, complemented by the Shakespeare 2025 CP controller in the pilot house. The yacht is fitted with a Digital 500 Series 8Ft AM/FM antenna and a Concord TV distribution board with AM/FM capabilities, ensuring seamless connectivity.

For satellite TV, the yacht features the KVH 2011 Tracvision HD7 USA in an M9 dome, along with an additional KVH2011 Tracvision M9 empty dome. Two Edson 6" towers support the KVH M9, and the KVH HD7 tuner expansion kit enhances the system's capabilities. In the main salon, a Samsung UN60D8000 TV is mounted, paired with a Motivated Design 65" PLSM/LCD popup lift boat mount and a remote kit with a Vimar wall DC relay. The Bose Lifestyle V35 system, in a white flush mount, delivers superior sound quality, complemented by a Samsung BD-D6700 3D Blu-ray player and a DirecTV HD DVR receiver. The salon also features a Tripplite HTR07-1U and a Middle Atlantic sliding rack assembly for organized equipment storage.

The dining area and salon are equipped with Speakercraft Accufit CRS7 One

speakers and a Bose SA-2 stereo amplifier, providing rich audio. The Bose RC-355 V Class remote RF ensures easy control. On the aft deck, JL Audio M770 CCX marine speakers in white, along with Bose SA-3 Lifestyle stereo amplifiers, deliver powerful sound, controlled by a Bose RC-355 V Class remote RF.

In the pilothouse, Speakercraft Accufit CRS7 One speakers and a Bose SA-3 Lifestyle stereo amplifier create an immersive audio environment, with control via a Bose RC-35S V Class remote RF. The galley features a Samsung 32" HD LED TV UN32D6000, a Concord TV mount, and a DirecTV HD DVR receiver. A Samsung BDC5500 Blu-ray player and a Sonance FS-23 iPod dock provide versatile entertainment options, while Bose SA-3 Lifestyle stereo amplifiers and Speakercraft Accufit CRS7 One speakers ensure high-quality sound.

The bow is equipped with a Bose SZ-3 Lifestyle stereo amplifier and a Bose RC-35S V Class remote RF, while the flybridge features a Fusion AM/FM/iPod stereo, JL Audio M770 CCX marine speakers, and a Fusion MS-WR600C wired remote-chrome for the helm and bar. A Fusion 500 Watts 4 Channels marine amplifier enhances the audio experience.

In the VIP suite, a Samsung 40" HD LED TV UN40D6400 is mounted, along with a Concord TV mount, Samsung BDC5500 Blu-ray player, and DirecTV HD DVR receiver. A Sonance FS-23 iPod dock adds to the entertainment options. The port and starboard guest cabins each feature a Samsung 40" HD LED TV UN40D6400, Concord TV mounts, DirecTV HD DSS receivers, Samsung BDC5500 Blu-ray players, and Sonance FS-23 iPod docks.

The master suite boasts a Samsung 50" HD LED TV UN40D6400, Concord TV mount, Bose Lifestyle V35 system, Samsung BDC550 Blu-ray player, and DirecTV HD DVR receiver. A Middle Atlantic sliding rack assembly ensures organized equipment storage. The captain's quarters are equipped with a Samsung 40" HD LED TV UN40D6400, Concord TV mount, DirecTV HD DSS receiver, and Sonance FS-23 iPod dock.

In the crew areas, Audiovox drop-down 10' LCD DVD TVs and Xantech AV-61

systems provide entertainment, with DirecTV Basic DSS receivers ensuring connectivity. The crew lounge features a Samsung 32" HD LED TV UN32D6000, Concord TV mount, Samsung BDC5500 Blu-ray player, and Sonance FS-23 iPod dock, offering a comprehensive entertainment setup for the crew.

Appliances

Rewritten Description

The yacht is outfitted with a wide range of premium appliances designed to elevate comfort and convenience throughout the vessel. In the main salon, the U-Line CLR2160 Black Ice Maker ensures guests have access to perfectly chilled drinks at all times. The lower foyer includes a Dometic CR-1110U/F fridge, offering extra storage for refreshments.

The galley is a culinary paradise, featuring a Sub-Zero BI-42 stainless steel refrigerator and two Sub-Zero 700BR white refrigerator drawers, providing ample space for fresh ingredients. The U-Line CLR2160 stainless steel ice maker complements the refrigeration setup, while the GE Profile series appliances, including a black cooktop, stainless steel oven, hood, microwave, dishwasher, and trash compactor, offer all the tools needed for gourmet cooking. The galley is further enhanced by three GE Profile GFC720F satin nickel disposals and matching incinerator sink top switches, along with a Franke KBX120-43 stainless steel sink and two Blanco 157-140 ST stainless steel hand spray faucets. The incinerator F-HC1100 satin nickel instant hot dual temperature faucet and the incinerator SST-FLTR stainless steel instant hot tank and filter ensure hot water is always available. The galley also features a Franke GNX-110-16 stainless steel island sink, a Grohe LadyLux PRO31042 SDO satin nickel pot filler, and a Grohe Atrio 20 074 AVO satin nickel island faucet, completing the sophisticated setup.

In the doghouse, a GE WSXH208HWW white washer and GE DSXH43EFWW white dryer take care of laundry needs, while a Sub-Zero 427G classic stainless wine cooler keeps a selection of fine wines at the perfect temperature. The crew lounge is equipped with a GE Profile PSIC5RGXBV black fridge, a Panasonic NN-SD3773 stainless steel microwave, and a GE WSM2700DWW white washer/dryer, ensuring the crew's comfort and convenience.

On the aft deck, a SUB-ZERO UC-15I ice maker with an overlay panel and no drain pump provides ice for outdoor gatherings. The flybridge is a center of entertainment, featuring a U-Line 2175WC wine cooler, two Sub-Zero 700BR white FRP face fridges by the hot tub, and Sub-Zero 700BR white FRP face fridge drawers behind the bar. The SUB-ZERO UC-15I ice maker and U-Line CLR2160 black ice maker ensure a steady supply of ice, while the Fire Magic 3C-S1S1P-A deluxe stainless steel gas BBQ grill offers outdoor cooking options. An Edgestar FP800 grey freezer provides additional storage for frozen goods, making the flybridge a versatile space for relaxation and entertainment.

Electronics

Rewritten Description

The yacht is outfitted with a cutting-edge electronics suite, ensuring flawless navigation and communication throughout the vessel. In the pilot house, three KEP Marine KEP-L 19 displays, readable in sunlight, offer clear visibility in any lighting condition. The Furuno NAV 3D BB MFD Processor, paired with three Furuno MU190HD displays, delivers extensive navigation capabilities. Mounted on the hard top is the Furuno NAV 3D 12KW 72N.M. 6' array, complemented by the Furuno BBWGPS WASS GPS antenna, ensuring precise positioning and tracking.

The radar arch is equipped with a Furuno NAV 3D 4KW, 48N.M. 3.5 array, while

the Furuno FA 150 AIS system and Digital 500 Series 4' Marine AIS enhance situational awareness. The pilot house also features a Concord computer tower, Nauticomp mouse, and Concord RF keyboard/mouse by Logitech, providing intuitive control over the vessel's systems. The Furuno GP 33 WAAS color GPS and Furuno RD323 NMEA repeater color displays at the lower helm ensure accurate navigation data is readily available.

Additional sensors and displays include the Furuno 235-MSLF 235KHZ smart sensor mounted forward on the hull, the Furuno FI50 wind display and sensor at the lower helm, and the Furuno PB 200 weather sensor on the hard top. The Furuno Navpilot 700 and PG 500R heading sensor, along with the Furuno Navpilot HRP 17-24 pumpset in the engine room, provide precise autopilot control. Communication is facilitated by the Furuno FM 4000 VHF 25 Watt radio and mic at the lower helm, with a Newmar hailer horn and Digital 500 Series 16' VHF antenna mounted on the hard top.

The upper helm is equipped with a KEP Marine KEPL-15 sunlight-readable display, a Furuno NAV 3D 12" MFD display, and a Garmin 22-inch chartplotter, offering comprehensive navigation tools. The Nauticomp mouse and panel mount control the NAV computer, while Furuno RD33 NMEA repeater color displays provide depth, speed, and temperature data. The Furuno NAVPILOT 700 second station and Furuno FM 4000 VHF radio with remote mic ensure seamless communication and control.

The flybridge features a Digital 500 Series 16' VHF antenna and Newmar hailer horn, along with a Newmar 32-12-50 DC-DC converter for reliable power distribution. Security and monitoring are enhanced by Sea See DND – 60 wide white ball cameras mounted on the aft deck and in the engine room, with a Sea See quad switcher and keyboard at the lower helm and a keypad at the upper helm. The Sea See video amp and Extron 8 input 8 output switcher ensure efficient video management.

Power management is supported by a Concord 110AC 12VDC 10 AMP

converter and a Concord DC-AC pure sine wave inverter, while two ACR RCL 100D 24VDC spotlights provide powerful illumination. This comprehensive electronics package ensures that the yacht is equipped for safe and efficient operation in all conditions.

Exterior equipment

Rewritten Description

The exterior of this yacht is crafted with a focus on both luxury and practicality, featuring custom seating on the aft deck that offers a stylish and comfortable area for relaxation. A strategically placed 440-inch TV forward of the wet bar on the aft deck ensures entertainment is always accessible. The custom wet bar on the aft deck boasts a granite top and is upholstered with Aqua Leather, accented by a stainless steel band and cuff, creating an elegant atmosphere. Four custom stainless steel stools complement the bar, while a Scandvik 10242 stainless steel sink and a polished chrome faucet complete the setup.

The aft deck also includes a Release Teak table with two angled table bases, providing an ideal setting for alfresco dining. On the flybridge, a Franke GNX-110-16 stainless steel sink and a 10-inch stainless steel sink are paired with a Scandvik 70103 polished chrome faucet, ensuring both convenience and style. The forward bar on the flybridge includes an additional Scandvik 10242 stainless steel sink.

The yacht's exterior is further enhanced by extra 2 3/8-inch oval stainless hull banding with a solid wood insert and a 4-inch offset, adding a touch of sophistication. The flybridge wet bar is equipped with six stainless steel bar stools, and the bar area near the hot tub features two additional bar stools. An aft flybridge table with a granite top and angled table base provides curved seating next to the hot tub, while the granite bartop for the flybridge bar and

hot tub adds a luxurious touch.

Removable teak tabletops are positioned between seats on the aft deck and flybridge, and the teak decking on the flybridge, aft deck, and bathing platform has been upgraded to 3-inch wide teak planks for a more refined appearance. A locker for the boarding ladder, an automatic/manual aft deck door with a stainless steel frame and tinted glass, and four wicker deck chairs enhance the yacht's functionality and style.

The swim platform is equipped with five 2-inch U-shaped handrails, and a Kahlenberg D-OA air horn ensures safety and communication. The bow features a non-skid and enclosed FRP box with a seat for storage, reinforced for a davit and standpipe installation. Two quartz floodlights provide illumination, while a custom flybridge cabinet on the starboard side accommodates a grill and appliances.

The bow deck is equipped with eight waterproof lights, and the yacht proudly displays two 16-inch stainless steel Hargrave logos. The engine room door is crafted from stainless steel, and the flybridge deck includes a navigation seat. A Freeman watertight access hatch measuring 30 inches by 30 inches provides access to the swimming platform, and 13 custom openable fiberglass portholes measuring 24 inches by 12 inches offer ventilation and light.

A stainless steel railing serves as a footrest for the port and starboard navigation seat on the boat deck, and 50 Cantalupi Diana 105 stainless steel exterior lights illuminate the yacht. The aft deck and flybridge deck handrails are complemented by 2-inch stainless steel exterior handrails. The hard top provides shade and protection, while a custom hot tub box with an FRP storage box and hinged lift-up panel offers additional storage and seating options.

The sun pad on top and FRP seating on the boat deck provide relaxation areas, and the hot tub features access steps, a safety rail, an integrated seat, and an access hatch to the space below for storage. Covers and cushions are included

for use in this area. A custom stairway provides access to the flybridge from the aft deck, with additional storage integrated into the design. Custom pillars at the sidewalk ways and a custom flybridge helm console add to the yacht's bespoke features.

Finally, two Maxwell VC3500 capstans are located on the aft deck, one on each side, and two FRP recessed lift ring holders for life rings ensure safety and convenience. This comprehensive array of exterior equipment ensures that the yacht is not only visually stunning but also highly functional and ready for any adventure.

Master stateroom

Rewritten Description

The master stateroom serves as a lavish sanctuary that harmonizes with the aesthetics of the main salon. The bed is crafted to be the centerpiece of the room, with all other elements framing it and enhancing the luxurious surroundings. The cabinetry details and craftsmanship are outstanding, contributing to the room's elegance. The headboard wall showcases striking design features, with 18-inch wide vertical panels of Zebra wood placed horizontally at a height of 60 inches above each nightstand. The center of the headboard wall is upholstered and seamlessly integrates with the detailed ceiling soffit, which mirrors the main salon's soffit and beautifully frames the bed.

The fabrics and furnishings in the master stateroom are meticulously chosen to elevate the luxurious atmosphere. The walls are upholstered in Majilite-Legend/Elegance/Cream, offering a soft and sophisticated backdrop. The flooring is covered with plush wool carpet, providing warmth and comfort underfoot. Fine Art 790050 sconces offer elegant lighting, while the bedspread

and shams from JF Fabrics' Champion collection add a touch of luxury. Euro shams from J Robert Scott in Cannon Plaid/Celadon and a neck roll from Kravet in Rufiji/Fieldstone complete the bedding ensemble. Roman shades from Kravet in linen and silver Lurex provide privacy and style, and the lighting is provided by Cantaluppi fixtures in satin nickel.

The master bath features a "His and Hers" layout with a spacious central shared shower. The vanities are generously sized, with sconces centered in pairs on each mirror for optimal lighting. The heads are positioned outboard in each bath and feature unique privacy glass panels. The marble theme is continued with Pearlato Suevo and Cream Kaduna, accented by stainless steel inlays. Ample storage and abundant lighting, both natural and artificial, ensure a comfortable and functional space.

The master bath furnishings include four Ashley 21309 sconces, gloss walnut cabinets, and flooring of Cream Kaduna with Pearlato Suevo and stainless steel inlays. The vanity tops are crafted from Pearlato Suevo with a 4-inch front edge, and art glass privacy panels add a touch of elegance. The shower is entirely marble, featuring dual entrances and recessed storage for bath items, creating a spa-like experience in the comfort of your own stateroom.

VIP stateroom, forward

Rewritten Description

The VIP stateroom, positioned forward of the galley in the bow, offers a secluded haven with its own entrance and stairway, ensuring an exclusive retreat for guests. Designed to reflect the storage and aesthetic details found throughout the yacht, this stateroom provides an added layer of privacy by being set apart from other guest areas. The room features dual closets, each over 3 feet wide, a large dresser with eight drawers, and ample additional

storage, making it both functional and luxurious.

A standout feature of the VIP stateroom is the headboard, which showcases a crisscross pattern of horizontal and vertical zebra wood, adding a distinctive touch to the room's decor. The walls are upholstered in

Majilite-Legend/Elegance/Cream, creating a soft and elegant backdrop. The flooring is covered with plush wool carpet, providing warmth and comfort.

Cantaluppi lamps in satin nickel offer sophisticated lighting, while the bedspread from JF Fabrics in Bombay/93J4841 adds a touch of luxury. Euro shams from Beacon Hill in Flash Point/Silver Screen and throw pillows from Lee Jofa in Gp&GB-Fretwork/Teal complete the bedding ensemble. Roman shades from RM Coco in Wilco/Linen provide privacy and style.

The VIP forward bath is a masterpiece of design, featuring Cream Kaduna marble with Emperador Dark accents. The bath includes dual rectangular sinks and extensive storage options. The vanity is uniquely designed with a combination of open and enclosed storage, featuring numerous drawers. The floor is beautifully accented with an inset border of Dark Brown marble. Outboard, beneath the porthole, is an expansive countertop with additional storage and vanity space.

The bath furnishings include Cream Kaduna marble flooring with Emperador Dark inlays, Emperador Dark marble vanity tops, and two Ginger 2881SN sconces. The cabinets are crafted from gloss walnut, and the shower features a frameless glass door with an Emperador Dark footrest/seat, providing a luxurious and relaxing experience.

Port & starboard guest staterooms

Rewritten Description

The port and starboard guest staterooms are meticulously crafted to cater to

every need of your visiting guests or family. Each room is outfitted with large TVs nestled in armoire-style entertainment cabinets, offering a wide array of entertainment options. Outboard, a spacious curved settee provides a comfortable lounging area, complemented by a well-equipped 5-foot closet complete with shoe racks, additional drawer space, and ample hanging space. The centerpiece of each room is a charming king-size bed, adorned with exquisite upholstery and zebra wood accents. These beds can be effortlessly converted into twin beds, allowing for complete walk-around access in either setup. Additionally, they feature wide lower drawers to store extra bedding, ensuring the guest closet remains tidy.

The fabrics and furnishings in these staterooms are chosen to enhance the luxurious ambiance. The walls are upholstered in Majilite-Legend/Elegance/Cream, offering a soft and elegant backdrop. The flooring is covered with plush wool carpet, adding warmth and comfort. Lighting is provided by Sonneman-Mitra lamps in satin nickel, creating a sophisticated atmosphere. The bedspreads are from Maxwell-Neo in #4Stone, while the throw pillows in the starboard room are from Rodolph/MMW/8350H, and in the port room from Romo/Casca Hemp. Roman shades in the starboard room are from RM Coco in Live Dust, and in the port room from Duralee in 14225/Taupe, offering privacy and style.

The guest baths are equally luxurious, featuring marble floors and vanities in Cream Kaduna, providing a seamless and elegant finish to these well-appointed staterooms.

Crew lounge and quarters

Rewritten Description

The crew quarters, situated aft, are crafted to ensure both comfort and

practicality for the yacht's crew. It includes an enclosed entrance from the port deck and another from the stern, providing easy access. The accommodations feature a cozy crew settee and a compact kitchen area equipped with cabinet storage, a sink, and a full-height refrigerator, offering all the essentials for meal preparation and relaxation. Additionally, a washer and dryer are available for crew use, ensuring convenience during extended voyages.

The crew staterooms are thoughtfully designed to provide a comfortable living environment. The captain's stateroom is a true suite, complete with a dresser, a work station, a 42-inch flat-screen TV, a spacious double-door closet, and a queen bed with full walk-around capability. For added flexibility, a hidden Pullman bunk is available for an extra crew member during deliveries. The captain's suite also includes a private bath, ensuring privacy and comfort.

The other two crew staterooms each feature twin bunks and a private bath, providing ample space and privacy for the crew. The crew area is furnished with high-quality materials, including teak flooring and gloss walnut walls, creating a warm and inviting atmosphere. The countertops are crafted from Aurora Granite, adding a touch of elegance to the space. The kitchen area is equipped with a GE 2700 washer/dryer, a GE GSCS3KGYSS refrigerator, and a Kohler/Compass sink, ensuring that all practical needs are met with style and efficiency.

Aft deck

Rewritten Description

The aft deck of this yacht is a multifunctional area crafted to host large gatherings, whether for relaxation or dining. The spacious table comfortably accommodates fourteen guests for meals, and its center section can be removed to convert it into two cocktail tables, ideal for more informal

occasions. Enhancing the entertainment options, a 32-inch flat-screen TV is strategically placed behind the professionally equipped bar, which features four modern square bar stools. Both the bar stools and the bar itself are upholstered in a pale mist Aqua Leather, elegantly accented with polished stainless steel. The bar top is made from exquisite gloss teak, complementing the natural teak flooring that adds warmth and sophistication to the area.

The furnishings on the aft deck are meticulously chosen to enhance comfort and style. The settee and teak chair cushions are crafted from fabric tent/sail cloth in the Shara design, offering a durable and stylish seating option. The bar stools, upholstered in Spinneybeck Aqua Leather in Mist 606, match the bar front, creating a cohesive and elegant appearance. The aft table, a Release Gloss Teak piece measuring 126 inches by 56 inches, serves as a stunning focal point for the deck. Throw pillows from Delaney and Long in the Tender/Mist design add a touch of luxury and comfort.

For added convenience, the aft deck is equipped with a Scotsman ice maker that produces round cubes, ensuring that refreshments are always perfectly chilled. The custom stainless steel spiral stairs provide access to the flybridge, adding a touch of modern elegance to the space. With a ceiling height of 7 feet 9 inches, the aft deck offers a spacious and inviting atmosphere, making it an ideal location for entertaining guests or enjoying a peaceful moment at sea.

Flybridge

Rewritten Description

The flybridge of this yacht is a brilliantly crafted area that seamlessly blends functionality with luxury, making it perfect for both navigation and relaxation. The helm station is situated on the starboard side and includes a double bench, while another double bench is located on the port side, both facing

forward to offer optimal views. This space is thoughtfully designed to host large groups, whether for dining or unwinding, with seating for fourteen and a professional service bar that accommodates six.

Behind the bar, a well-appointed cooking station provides sixteen linear feet of preparation or buffet space. Beneath, you'll find two Subzero refrigerator drawers, a 30-inch ice cooler for drinks, an electric grill, a gas grill, a utility sink, and ample storage, ensuring all culinary needs are met. The decking under cover is crafted from natural teak, adding elegance and durability.

Opposite the buffet area, a large spa tub invites relaxation, complete with its own small bar and two bar stools facing the spa for intimate conversations. A large sun pad with deep storage underneath offers additional space for lounging and storing essentials. Aft, four lounge chairs with small side tables provide the perfect spot for sunbathing or enjoying the view.

The flybridge furnishings are meticulously chosen to enhance the luxurious atmosphere. Refrigeration is provided by three Subzero drawers 700BR, while a Uline CLR2160 ice maker and a Uline 2175WC wine cooler ensure refreshments are always available. Two Edgestar-FP860 freezers offer extra storage for frozen goods. The cooking facilities include an Elag BGR530426 cooktop, and the spa tub is a Spa City Sunbelt/Apollo model, offering a relaxing retreat.

The flooring is made of natural teak, and the bar stools, helm benches, and settees are upholstered in Majilite Ovation/Cappuccino, providing both comfort and style. The settees are covered in Fabric Tent-Dupion/Sand, and throw pillows from Bangladesh/Dune with Samuel and Sons-Firewood trim, as well as Great Outdoors-Aqua Velvet/Coco, add a touch of elegance and comfort to the space. This flybridge is a perfect blend of luxury and practicality, designed to enhance the yachting experience.

Disclaimer

Rewritten Description

The Company provides the details of this vessel with the intent of offering accurate and thorough information. However, it cannot assure or guarantee the precision of this data or the condition of the yacht. Potential buyers are advised to have their agents or surveyors meticulously examine any details they wish to confirm. This vessel is available subject to prior sale, price adjustments, or withdrawal without notice, allowing for flexibility in the sales process.

Regarding mechanical specifics, the engine and generator hours are noted as of the date of the original listing. These numbers reflect what the listing broker has been told by the owner and/or the actual readings from the engine hour meters. The broker cannot confirm the exact hours, and it is the responsibility of the buyer and/or their agent to verify engine hours, any implied or explicit warranties, major overhauls, and all other representations mentioned in the listing. This ensures that all parties have a clear understanding of the yacht's mechanical condition and any potential implications for future use.

Recent additions and services

Rewritten Description

The yacht has recently benefited from a series of substantial upgrades and services, enhancing both its functionality and visual allure. A new SPOT ZERO Desalination Watermaker and Freshwater Purifier Combo has been installed, guaranteeing a dependable supply of clean water for all onboard needs. The flybridge now boasts stunning granite countertops in a Cosmic Leather finish,

adding a touch of luxury to the outdoor entertainment area.

Comprehensive factory-recommended services have been carried out on the main engines and generators, ensuring they operate at peak efficiency. Both exhaust risers and heat blankets have been replaced, contributing to the vessel's overall reliability and performance. The yacht's hull has been treated with antifouling bottom paint and Propspeed, offering protection against marine growth and enhancing hydrodynamic efficiency.

The steering rams and hydraulic hoses have been serviced, ensuring smooth and responsive handling. All thru-hull fittings and valves have been meticulously serviced, and the dripless shaft housings and seals have been attended to, preventing leaks and maintaining optimal performance. The Naiad stabilizers have had their seals replaced and serviced, ensuring a stable and comfortable ride in various sea conditions.

Additionally, the swim platform has been refreshed with new teak and steps, enhancing both the functionality and appearance of this key area. These recent additions and services ensure that the yacht is not only in top mechanical condition but also offers a luxurious and enjoyable experience for all who come aboard.

Designer's comments

Rewritten Description

The aim of this project was to design a modern interior that radiates balance and sophistication, featuring clean lines and cabinetry with timeless appeal, ideal for both charter and private use. The design accomplishes this through a harmonious mix of contrasting surfaces, including the luxurious Gloss Walnut wood, Espresso and Taupe Zebra veneer accents, sculptured glass, and the refined Cream Kaduna Marble, also known as Royal Oyster. This combination

creates an abstract and sculptural impression that is both refreshing and contemporary.

All guest and social areas are generously sized, providing ample space for relaxation and entertainment. Each area is impeccably appointed, showcasing the meticulous attention to detail that has been applied throughout the yacht. The result is an interior that not only fulfills the practical needs of its occupants but also offers an aesthetically pleasing environment that enhances the overall yachting experience.

CONTACTS

Shestakov Yacht Sales is a brokerage company specializing in the sale and service of yachts worldwide. The company offers services for buying and selling both new and used motor yachts, sailing vessels, and luxury superyachts. They also provide yacht registration, insurance, technical maintenance, crew selection, and charter organization services across the U.S., Canada, Latin America, the Caribbean, and the Bahamas.

The founder and lead broker of the company is Andrey Shestakov, a licensed and certified expert with extensive experience in marine engineering and shipbuilding.

The company has an extensive network of partnerships with major yacht manufacturers worldwide and provides services in multiple languages, including Russian, Ukrainian, Spanish, and English. The office is in Dania Beach, Florida, USA.

For more information and to view available yachts, you can visit the company's official website: <https://shestakovyachtsales.com>

Contact details

Phone: +1(954)274-4435

Email: andrey@shestakovyachtsales.com

Address



1380 Weeping Willow Way, Hollywood,
Florida 33019