

QUANTUM - BROWARD YACHT



Builder: [Broward Yacht](#)

LOA: 125' 0" (38.10 m)

Year Built: 1989

Beam: 24' 0" (7.37 m)

Model: N/A

Max Draft: 22' 8" (6.92 m)

Price: \$3,900,000 USD Subject to change.

Cruising Speed: 15 Knots (17.26 MPH)

[See full listing on our website](#)

Location: Miami, United States

Max Speed: 17 Knots (19.56 MPH)

TABLE OF CONTENTS

OVERVIEW 3

SPECIFICATIONS 5

 Basic Information 5

 Dimensions 5

 Speed, Capacities and Weight 5

 Hull and Deck Information 6

 Engine Information 6

GALLERY 7

DETAILED DESCRIPTION 14

CONTACTS 23

OVERVIEW

The 125-foot (38.10-meter) Quantum, a masterpiece by Broward Marine from 1989, has been thoughtfully updated in 1995, 2015, and 2022, showcasing a blend of luxury and expert craftsmanship. As the first Broward yacht to earn ABS certification, it continues to maintain this esteemed recognition. This stunning yacht accommodates up to 8 guests in 4 beautifully designed staterooms, along with space for up to 6 crew members.

As you step aboard, the expansive interior immediately impresses, offering more room than typically expected for a yacht of this size. The galley-down design allows for an opulent master suite at the front of the main deck, complete with a king-size bed, separate his and her bathrooms, a vaulted ceiling, a generous lounge area, a dressing table, and a cedar walk-in closet. Quantum's skylounge is a haven of relaxation, featuring a fully stocked wet bar with barstools, a flat-screen TV, and a comfortable seating area. The sun deck is crafted for leisure, offering a hot tub and plenty of seating and lounging areas, perfect for taking in stunning sunsets.

Driven by twin Detroit Diesel engines, each providing 1,400 horsepower, Quantum cruises comfortably at 15 knots and can reach a top speed of 17 knots. The comprehensive 2022 refit included a fresh coat of hull paint, a major AV system upgrade, a new Jacuzzi, and refreshed bottom paint and Propspeed.

KEY FEATURES:

Hosts up to 8 guests in 4 staterooms, including a magnificent on-deck master suite, plus up to 6 crew

Extensive refit in 2022, featuring new hull paint, advanced AV system, new Jacuzzi, updated bottom paint and Propspeed, new air conditioning, and new batteries

First Broward yacht with ABS certification, still fully compliant

Skylounge with a complete wet bar, flat-screen TV, and inviting seating area

Twin Detroit Diesel engines with 1,400 horsepower each

Top speed of 17 knots and cruising speed of 15 knots

Discover yacht sales at the current location and seize the chance to own a yacht that epitomizes elegance and performance.

SPECIFICATIONS

Basic Information

Category:
Motor yachts

Year Built:
1989

Model Year:
1989

Country:
United States

Dimensions

LOA:
125' 0" (38.10 m)

Max Draft:
22' 8" (6.92 m)

Beam:
24' 0" (7.37 m)

Speed, Capacities and Weight

Cruise Speed:
15 Knots (17.26 MPH)

Water Capacity:
999 Gallons

Max Speed:
17 Knots (19.56 MPH)

Fuel Capacity:
8742 Gallons

Gross Tonnage:
293 Pounds

Hull and Deck Information

Hull Material:
Aluminum Yachts

Hull Designer:
N/A

Deck Material:
Aluminum

Interior Designer:
Broward Marine (USA)

Hull Configuration:
Semi-Displacement

Engine Information

Engines:
2

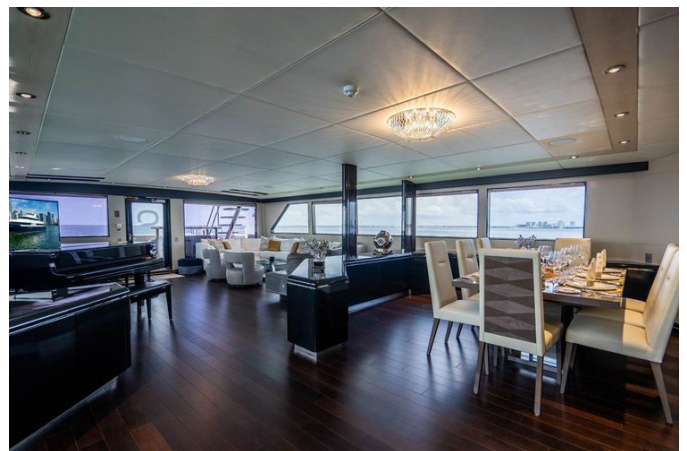
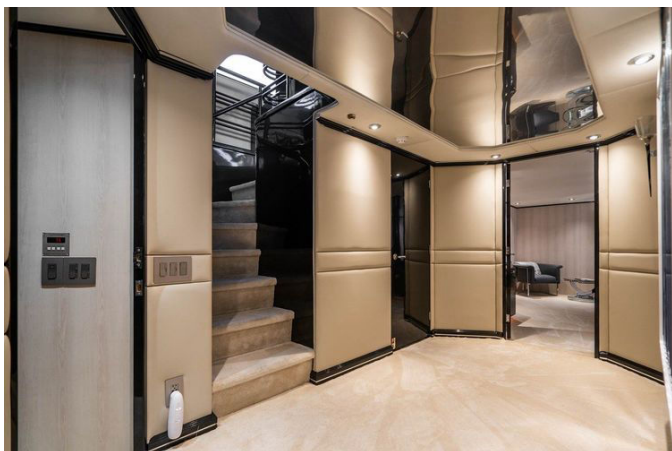
Engine Type:
Inboard

Manufacturer:
Detroit Diesel

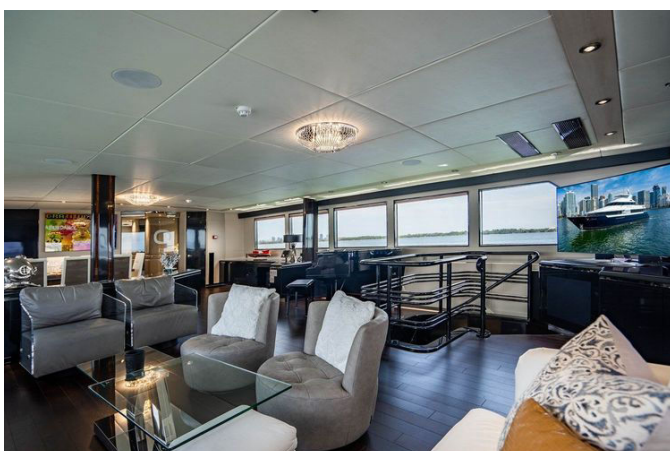
Fuel Type:
Diesel

GALLERY

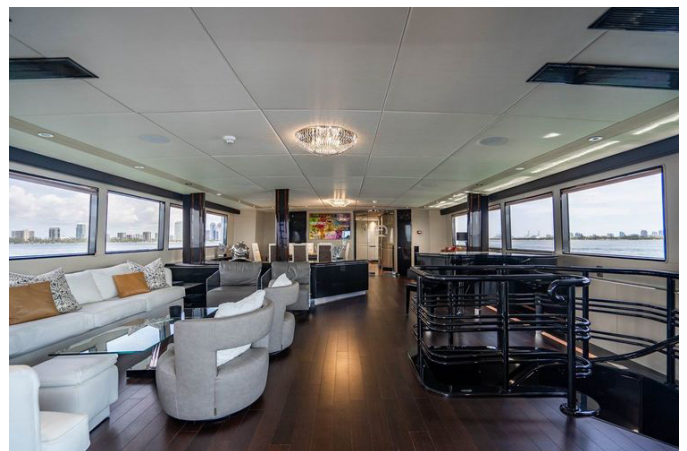


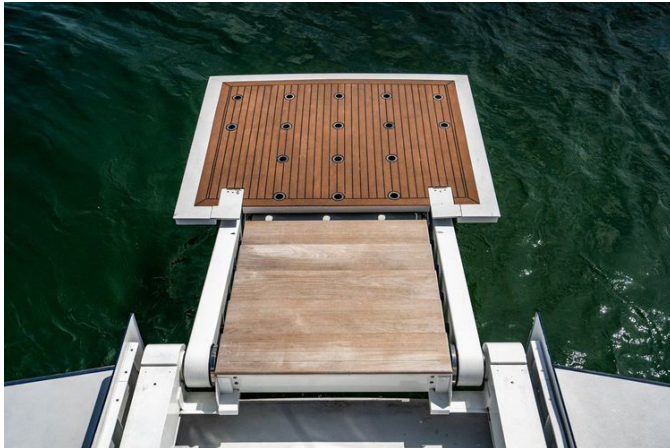












DETAILED DESCRIPTION

Construction

This yacht exemplifies a perfect blend of strength and style, with its aluminum hull and superstructure offering both resilience and a sleek, contemporary look. The use of aluminum ensures the vessel is not only robust and resistant to harsh conditions but also lighter, which enhances its performance and fuel economy. The elegant teak decks complement the solid aluminum structure, infusing a sense of timeless luxury and warmth into the yacht's design. Teak provides a striking contrast to the metallic elements and features a non-slip surface, ensuring both safety and comfort for those on board. This seamless integration of materials creates a yacht that is not only visually captivating but also designed for superior performance and enduring durability on the high seas.

Dimensions

This splendid yacht extends to a remarkable overall length of 125 feet, or 38.10 meters, providing generous space for opulent living and entertaining. Its beam, precisely crafted to a width of 24.02 feet (7.32 meters), offers a stable and expansive platform, enhancing both comfort and performance. The draft, fully loaded, measures 6.50 feet (1.98 meters), facilitating smooth passage through various water depths. With a gross tonnage of 298, this vessel exemplifies its robust construction and capacity.

Regarding capacities, the yacht is well-prepared for long journeys with a fuel capacity of 8,742 US gallons (33,092 liters), allowing for extended travel without frequent stops for refueling. The water capacity is 999 US gallons (3,781 liters), matched by a holding capacity of 999 US gallons (3,781 liters), ensuring ample

resources for comfort and convenience on board.

In terms of performance, this yacht is engineered to impress with a top speed of 17.0 knots, enabling swift and thrilling voyages across the water. For more relaxed travel, the cruising speed is set at a comfortable 15.0 knots, offering a balance of efficiency and enjoyment. This harmonious blend of dimensions and capabilities makes the yacht an ideal fusion of luxury, performance, and practicality.

Machinery

The yacht is driven by a pair of powerful Detroit Diesel 16V92TADDEC engines, each producing an impressive 1400 horsepower. These engines are coupled with ZF gearboxes with a 2.5:1 ratio, ensuring seamless and efficient power delivery to the Lips propellers, which propel the vessel forward with precision and dependability.

Onboard electricity is supplied by two 80Kw Northern Lights M668T31 generators, delivering a 240V single-phase, 60Hz output. Each generator consumes between 75 to 80 gallons of fuel daily, ensuring a consistent power supply for all systems on board. For shore power, the yacht is fitted with two ASEA 3-phase 100amp, 36 KVA converters, capable of managing a voltage range from 180 to 520 VAC at 47-63 Hz. The electrical system is bolstered by a set of new 12-volt 8D batteries, strategically located under the pilothouse for electronics and emergency use, as well as for the port and starboard generators.

Ensuring comfort is a top priority, and the yacht is equipped with a Dometic chilled water air conditioning system featuring two new compressors, maintaining a pleasant climate throughout the vessel. The onboard watermakers use Aqua Tec reverse osmosis technology, providing a dependable supply of fresh water. Stability and maneuverability are enhanced by NAIAD 301 electric/hydraulic trim tabs and stabilizers, along with an HPS

85hp hydraulic bow thruster. The Wagner steering system offers precise navigation control, while the Alpha Laval fuel separator and filtration system ensure fuel purity. The fresh water system, powered by Goulds, guarantees consistent water pressure and quality. This extensive array of machinery ensures the yacht operates smoothly and efficiently, delivering a luxurious and dependable experience on the water.

Communication, navigation & entertainment systems

The yacht is outfitted with an extensive array of communication systems, ensuring uninterrupted connectivity while at sea. It includes six Horizon CNB230 handheld phones, offering dependable communication across the vessel. For marine communications, the yacht is equipped with four ICOM VHF handheld radios, an InmarSAT phone for satellite connectivity, two Furuno VHF radios, and an SSB SEA 322, providing robust and versatile communication options.

Navigational accuracy is guaranteed by a suite of advanced systems. The yacht features two Furuno 1510 radars, each with a 72-mile range, delivering excellent situational awareness. The SeaPlath gyrocompass and Venus magnetic compass provide precise heading data, while the Furuno autopilot system simplifies navigation. Depth is measured by a Furuno depth sounder with a B&G Hercules 390 digital display, offering accurate underwater readings. Navigation is further supported by two dedicated laptops and a Nobletec laser plotter, with the Furuno FA-170 AIS and a new Garmin GPS system enhancing tracking and positioning precision.

Onboard entertainment is truly exceptional, with a variety of high-quality systems to elevate the luxury experience. The sky lounge is equipped with a Samsung flat-screen TV, while the master stateroom features a Sony flat-screen TV. The main salon boasts a Sony curved TV, providing an

immersive viewing experience. The Marantz A/V system, along with Apple TV, offers a broad selection of entertainment options. Additionally, the yacht is equipped with a new RTI audio and visual system throughout, ensuring superior sound and visuals in every part of the vessel. This integration of communication, navigation, and entertainment systems ensures the yacht is not only a marvel of modern technology but also a sanctuary of luxury and comfort.

Tenders & toys

The yacht boasts an impressive collection of tenders and water toys, promising endless enjoyment and adventure on the sea. The main tender, a 2018 4.2-meter Brig F420, serves as a dependable and versatile transport option for excursions and trips to shore. This tender is ideal for discovering hidden coves or simply taking a leisurely cruise along the coast.

For those in search of excitement and adrenaline, the yacht features two 2018 Sea Doo Spark personal watercraft, delivering thrilling speed and nimble handling on open waters. Additionally, the yacht is outfitted with two new SeaBobs, providing a distinctive underwater experience that lets guests glide effortlessly beneath the surface. These toys ensure that each day on the yacht is packed with opportunities for adventure and enjoyment, catering to both relaxation and high-energy pursuits.

Deck equipment

The yacht is equipped with cutting-edge deck gear, ensuring both practicality and opulence. Central to the anchoring system are two new Maxwell windlasses, each capable of managing 7,500 pounds, offering strong and dependable anchoring solutions. These are complemented by two new Maxwell deck capstans on the aft deck, designed to ensure smooth and

efficient mooring.

The anchoring setup is further enhanced by a diverse selection of anchors, including two new Pool-N anchors weighing 350 pounds each, along with three Fortress anchors. The system is completed with anchor chains measuring 1/2" by 400 feet and 1/2" by 350 feet, guaranteeing secure and stable positioning in various conditions.

For tender management, the yacht features Marquipt main tender davits with a lifting capacity of up to 1,500 pounds, ensuring safe and straightforward tender deployment. Boarding is made easy with a Marquipt stern boarding gangway, a 12-foot manual passerelle with an extension, facilitating easy access to and from the yacht.

The Opacmare swim platform provides an ideal spot for water activities, while the newly added Jacuzzi on the sun deck offers a luxurious area for relaxation and enjoyment. This blend of sophisticated deck equipment ensures the yacht is not only ready for practical maritime tasks but also provides an enhanced level of comfort and leisure for everyone on board.

Fire fighting & safety equipment

The yacht is outfitted with an extensive range of fire fighting and safety equipment, ensuring maximum protection for everyone on board. The fire control system is robust, featuring two halon fire suppression systems installed in the engine room to swiftly tackle any potential fires. Additionally, five seawater firefighting stations are strategically placed throughout the yacht, including in the engine room, port entrance, aft deck, boat deck, and guest laundry, providing immediate access to firefighting resources.

To further bolster safety, the yacht is equipped with 15 portable fire extinguishers, both halon and CO2, distributed throughout the vessel to address any fire emergencies promptly. The safety of the crew and guests is

further ensured by a network of eight fire, heat, and smoke detectors located in critical areas such as the crew mess, galley, engine room, pantry, guest accommodations, and pilothouse, offering early warning in case of fire.

In terms of safety equipment, the yacht is well-prepared for emergencies with two Zodiac life rafts, each capable of accommodating 16 people, ensuring ample capacity for all on board. There are also four SOLAS-approved life rings with 30-foot lines, providing additional safety measures. For emergency location, the yacht is equipped with an Ocean Signal 406 EPIRB, ensuring that help can be summoned quickly if needed. The safety equipment is rounded out with Schottle flares for signaling and a comprehensive medical kit that includes oxygen and a defibrillator, ensuring readiness for medical emergencies. This extensive suite of fire fighting and safety equipment underscores the yacht's commitment to the safety and well-being of its passengers and crew.

Accommodations

QUANTUM, crafted by Broward Marine in 1989, has seen major updates in 1995, 2015, and most recently in 2022, ensuring it remains in impeccable condition. Remarkably, it was the first Broward to receive ABS certification and continues to uphold these high standards. Upon stepping aboard, guests are immediately struck by the yacht's spaciousness, which surpasses expectations for a vessel of its size. The galley-down layout allows for a grand master suite at the front of the main deck. This suite includes a king-size bed, his and her en-suite bathrooms, a vaulted ceiling, a generous lounge area, a dressing table, and a walk-in cedar closet, providing a luxurious escape.

The starboard guest entrance opens into a sizable lobby, leading forward to the master suite, up to the bridge deck and sky lounge, or aft to the dining salon. Next to the glass door leading to the open main salon is a wine station, complete with wine racks, a Kedco wine refrigerator, and a lighted glass display

cabinet. A day head is conveniently located in this area as well. Moving aft into the full-beam salon, guests will find a dining table with seating for eight. This table features an automated leaf, allowing it to transform into a smaller, more intimate setting at the touch of a button. Built-in cabinetry finished in lacquered wood provides ample storage for china and linens, doubling as a buffet station during meals. The main salon is furnished with soft, comfortable seating recently re-upholstered in soothing cream hues, and a large curved TV in the corner for movie nights. Through the aft deck doors, a spacious deck area awaits, complete with seating, dining, and a fully equipped wet bar. The working deck area is discreetly positioned behind this deck, above the swim platform and lazarette.

Inside, a curved staircase from the main salon descends to the lower deck, where three guest suites are located off a central lobby. The forward starboard cabin features two twin beds and an en-suite bathroom with a Jacuzzi tub. The port side guest stateroom offers a queen bed, hanging lockers, a TV, and an en-suite bathroom with a Jacuzzi, as well as a small sitting area. Aft, the VIP stateroom boasts a king-size bed, a large en-suite bathroom with a dressing table, double sinks, and a Jacuzzi tub.

On the bridge deck, behind the wheelhouse and the captain's office/bunk room, is the sky lounge, a popular gathering spot for pre-dinner drinks. This area includes a full wet bar with barstools, a flat-screen TV, and a comfortable lounge area. Aft of this is the boat deck, designed as the center of activity with ample sunning spaces and an optional awning for those seeking shade.

Ascending further, the sun deck offers additional seating beneath the yacht's communication arch. Previously home to a hot tub, the plumbing and wiring remain intact, allowing for potential future installation. This space now provides a fantastic vantage point for enjoying sunsets or even Fourth of July fireworks.

Key features of QUANTUM include accommodations for up to eight guests in

four staterooms, including the impressive master suite, and room for up to six crew members. The extensive refit completed in 2022 included new hull paint, a massive AV system upgrade, a new Jacuzzi, new bottom paint and Propspeed, new AC, and new batteries. Powered by twin Detroit Diesel engines with 1,400 horsepower each, the yacht achieves a maximum speed of 17 knots and a cruising speed of 15 knots. Please note that all of the owner's personal effects are excluded from the sale. All specifications, speeds, capacities, and consumption figures are approximate and should be verified by the buyer's agent or surveyor. The yacht is offered subject to prior sale, price and/or inventory changes, or withdrawal from the market without notification.

Galley & laundry equipment

The yacht's galley is outfitted with premium appliances, ensuring culinary tasks are handled with ease and precision. The main galley boasts a Samsung stovetop with five burners, ideal for crafting gourmet dishes, alongside two Kenmore ovens for baking and roasting. A GE Magic Chef microwave offers quick heating and meal preparation convenience. For refrigeration, the galley is equipped with two full-size Kenmore fridge/freezer units and two Kenmore under-counter fridge/freezer units, providing ample space for both fresh and frozen items. Dishwashing is managed by a Kenmore dishwasher, while a Kenmore extraction fan maintains a clean and odor-free cooking environment. In the pantry, additional equipment enhances the galley's functionality. It includes two bread warmers and a GE microwave for extra cooking options. Refrigeration needs are further addressed with two Sub-Zero refrigerators and a Sub-Zero freezer, complemented by a Kitchen Aid ice maker for refreshing drinks. The pantry also features a Kenmore dishwasher and an Edge Star wine cooler, perfect for keeping fine wines at the optimal temperature. The yacht's laundry facilities are designed for efficiency and ease, featuring three Maytag washers and three Maytag dryers. This arrangement ensures

that all laundry tasks are completed swiftly and effectively, allowing guests and crew to enjoy fresh linens and clothing throughout their journey. This comprehensive array of galley and laundry equipment ensures the yacht is fully equipped to offer a luxurious and comfortable experience for everyone on board.

CONTACTS

Shestakov Yacht Sales is a brokerage company specializing in the sale and service of yachts worldwide. The company offers services for buying and selling both new and used motor yachts, sailing vessels, and luxury superyachts. They also provide yacht registration, insurance, technical maintenance, crew selection, and charter organization services across the U.S., Canada, Latin America, the Caribbean, and the Bahamas.

The founder and lead broker of the company is Andrey Shestakov, a licensed and certified expert with extensive experience in marine engineering and shipbuilding.

The company has an extensive network of partnerships with major yacht manufacturers worldwide and provides services in multiple languages, including Russian, Ukrainian, Spanish, and English. The office is in Dania Beach, Florida, USA.

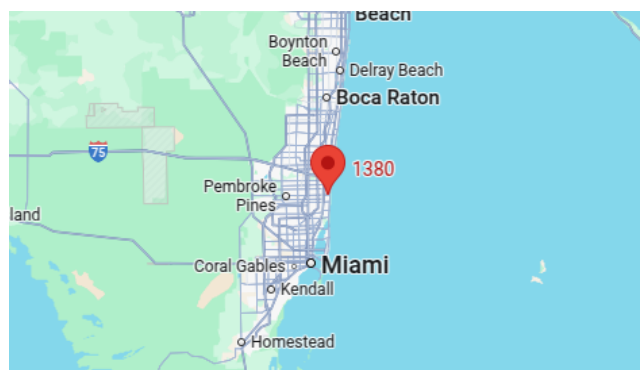
For more information and to view available yachts, you can visit the company's official website: <https://shestakovyachtsales.com>

Contact details

Phone: +1(954)274-4435

Email: andrey@shestakovyachtsales.com

Address



1380 Weeping Willow Way, Hollywood,
Florida 33019