

SUNSHINE - VERSILCRAFT



Builder: [VERSILCRAFT](#)

LOA: 126' 0" (38.41 m)

Year Built: 2010

Beam: 24' 0" (7.32 m)

Model: Euroyacht Planet 125S Hardtop

Max Draft: 7' 0" (2.13 m)

Price: \$3,690,000 USD Subject to change.

Cruising Speed: 15 Knots (17.26 MPH)

[See full listing on our website](#)

Location: Kota Kinabalu, Malaysia

Max Speed: 20 Knots (23.02 MPH)

TABLE OF CONTENTS

OVERVIEW	3
SPECIFICATIONS	4
Basic Information	4
Dimensions	4
Speed, Capacities and Weight	4
Accommodations	5
Hull and Deck Information	5
Engine Information	5
GALLERY	6
DETAILED DESCRIPTION	24
CONTACTS	28

OVERVIEW

The Euroyacht Planet 125S measures 38.41 metres and represents an Italian-built superyacht and luxury motor yacht that, upon launch, crowned the Versilcraft range. This Planet 125S Hardtop was completed in 2010, featuring a full teak deck, GRP hull and GRP superstructure, and certified to RINA standard RINA C HULL MACH Y. Keenly priced, inspections are available by appointment for serious buyers.

SPECIFICATIONS

Basic Information

Model Year:
2010

Country:
Malaysia

Year Built:
2010

Dimensions

LOA:
126' 0" (38.41 m)

Max Draft:
7' 0" (2.13 m)

Beam:
24' 0" (7.32 m)

Speed, Capacities and Weight

Cruise Speed:
15 Knots (17.26 MPH)

Water Capacity:
3170.06 Gallons

Max Speed:
20 Knots (23.02 MPH)

Fuel Capacity:
8453.51 Gallons

Gross Tonnage:
269 Pounds

Accommodations

Sleeps:

9

Crew Cabin:

3

Total Heads:

4

Crew Berths:

6

Hull and Deck Information

Hull Material:

Fiberglass and Plastic Yachts

Hull Designer:

N/A

Deck Material:

Fiberglass

Interior Designer:

N/A

Hull Configuration:

N/A

Engine Information

Engines:

3

Engine Type:

Inboard

Manufacturer:

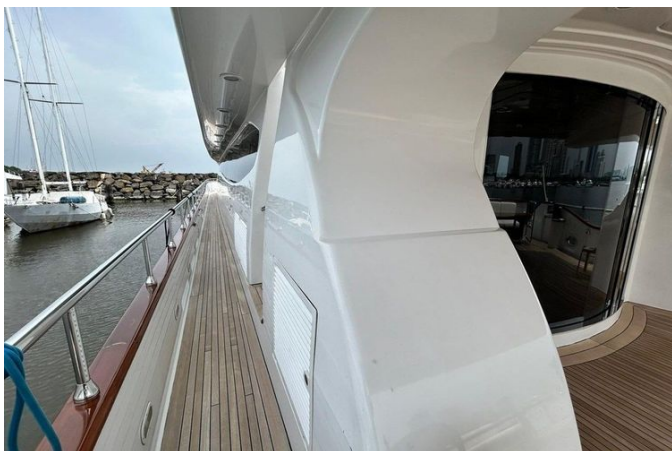
Caterpillar

Fuel Type:

Diesel

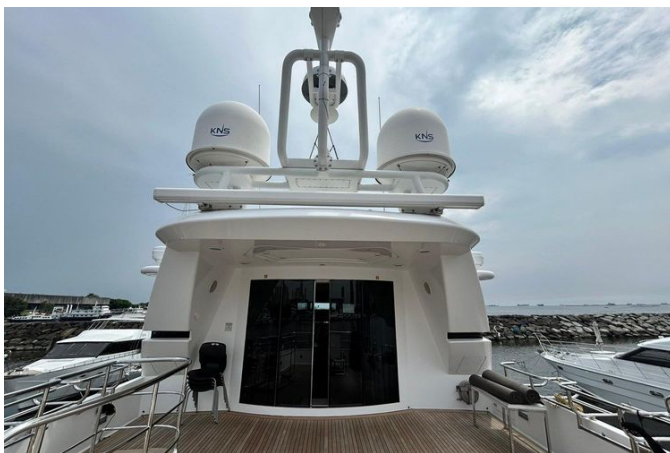
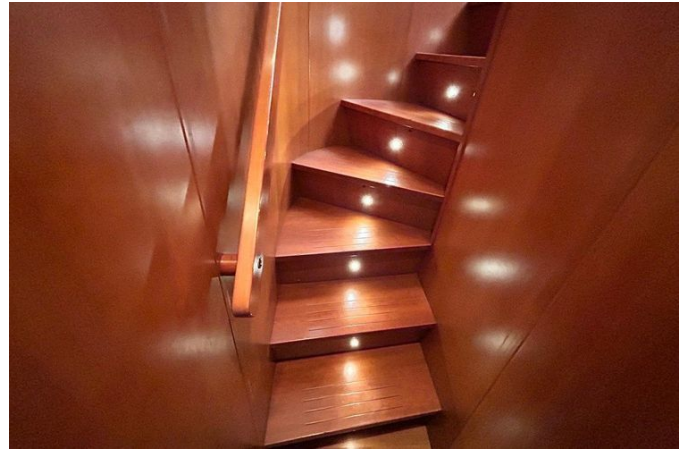
GALLERY



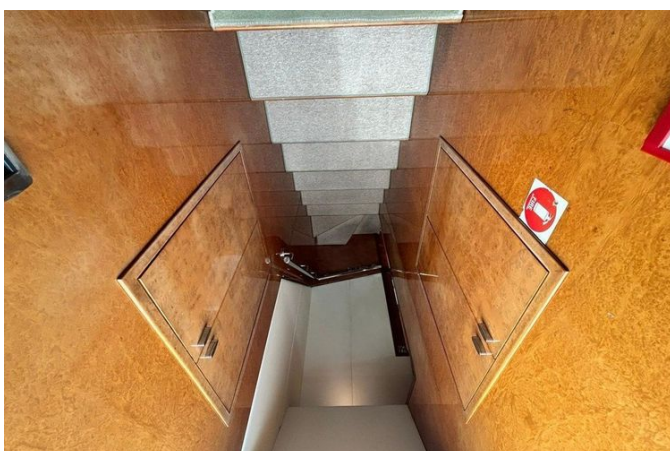
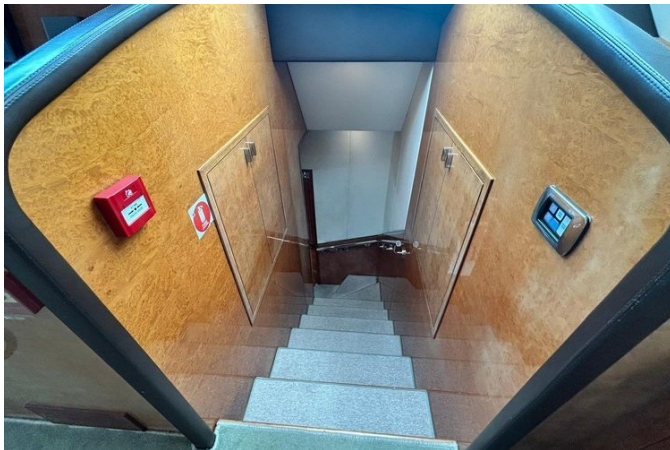




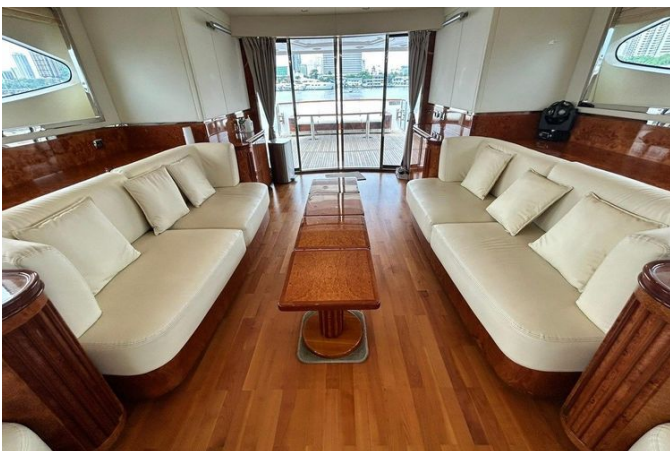






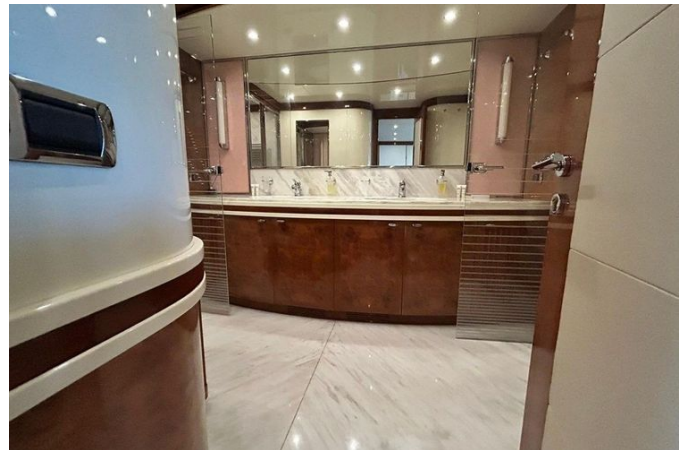












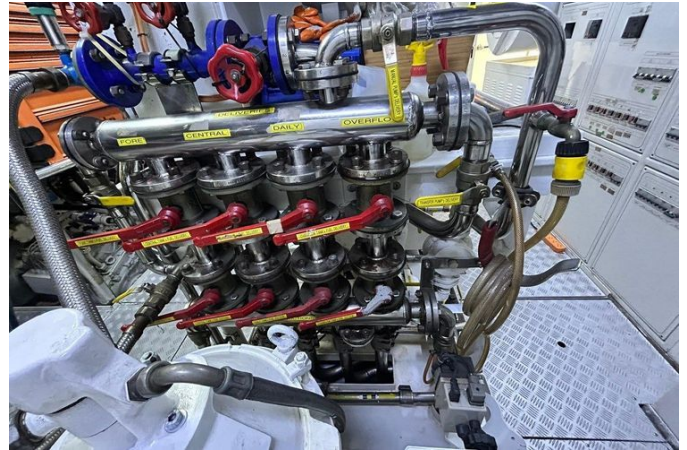












DETAILED DESCRIPTION

Introduction

Built in Italy, the 38.41 metre Euroyacht Planet 125S was the flagship of Versilcraft at launch, and this Planet 125S Hard Top, delivered in 2010, exemplifies the pedigree with a full teak deck, GRP hull, GRP superstructure, and construction to the RINA classification standard RINA C HULL MACH Y.

The main deck is notably spacious, welcoming guests across three distinct zones: a generous sitting area, a wet bar with three barstools, and a large dining table set upon elegant white marble flooring. A free-standing wine cooler adjacent to the dining table safeguards treasured vintages, while a discreet corridor opposite the bar leads to the cabins and the day head on the starboard side.

High-gloss woodwork and carefully curated furnishings heighten the sense of comfort and luxury. Outdoor living is expansive, with a substantial aft deck for al fresco entertaining and dining. The enclosed flybridge lounge creates a second indoor saloon on the upper deck beneath a large sunroof, and moving aft, glass doors open to an outdoor balcony offering ample space for socializing, sun-lounging, and dining. The foredeck invites private relaxation with sun pads, built-in seating, and two teak coffee tables, while an electric windlass enables two jet skis or tenders to be stored on deck.

Performance is assured by three Caterpillar C32 diesel engines for a top speed of 20 knots and a comfortable cruising speed of 15 knots, delivering true long-range capability. The electrical network is supported by two Kohler John Deere 89kW generators. Accommodation comprises four en-suite staterooms for up to nine guests, plus three crew cabins with three crew bathrooms for six crew. She has a gross tonnage of 269 GT and a 7.32 metre beam. Priced to sell, viewing is by appointment.

Interior features and equipment

The saloon welcomes you through an electric door system into a setting of gloss walnut wood and stylish Italian furniture, where sofas upholstered with fabric or leather invite relaxation. A dining table with chairs comfortably seats ten guests, complemented by a fixed table with settee and chairs and a coffee table. Entertainment is elegantly integrated with furniture housing DVP SONY Multi-standard, BOSE LIFESTYLE 38 and a satellite receiver, while a wall-mounted 50-inch Panasonic plasma TV provides cinematic viewing. A bar with marble top, sink, tap fridge and ice make completes this convivial space. The yacht is fully air conditioned.

Accommodation is thoughtfully arranged with a master cabin featuring a sofa, study area and marble bathroom; for guests, three ensuited cabins in a layout offering six berths; and a dedicated crew area comprising three ensuited crew cabins with six berths. Command is assured from the enclosed flybridge with helm station, augmented by Bow Thruster and Stern Thruster control, electric windshield wipers and glass washing control.

The galley is comprehensively equipped with an oven with combined microwave, an additional microwave, a dishwasher and a garbage compactor type ISE. Engineering excellence extends to an electric pump model ACB 331 for fuel transferring with a reserve function in case of malfunctioning of the ALFA LAVAL system, complemented by a manual fuel transfer pump EXCELSIOR 3.

Exterior features & equipment

The exterior invites refined alfresco living, beginning with elegant teakwood flooring that flows through the cockpit, where a loose furniture set pairs with a sofa and a table for relaxed gatherings beneath watertight SONY loudspeakers in the ceiling, with music supplied by the salon. A flybridge with its own loose

furniture set extends the open-air lifestyle, while hard top access is provided by means of both an internal and an external stairway for effortless movement between decks.

Forward, the bow area integrates a crane system dedicated to water toys storage and grants easy access to the forward sofa area. Sun worshippers will appreciate the large sun bathing area at the bow with a ventilated storage space beneath, opened by stainless steel hydraulic pistons, alongside a generous sunbathing zone complete with cushions in leatherette. At the stern, double stairways with teak steps lead down to a bathing platform in GRP and teak, complemented by a swimming platform with a tender garage to streamline days on the water. For launching personal watercraft, an electro-hydraulic crane with a 550kg lifting power handles jet skis with confidence.

Robust deck hardware underscores the yacht's seafaring capability, including stainless steel mooring bitts, bow stainless steel fairleads, stern stainless steel roller fairleads, and hawses in stainless steel with plates for anchor protection and chain washing. Anchoring is managed by electric anchor windlasses, each on 4000 Watt 380 Volt with controls at the bow in the wheelhouse, supported by a dedicated windlass control. Precision handling comes via electronic steering and trim tabs systems complete with an electro-hydraulic gear case, with flap controls serving the trim tab system (flaps). Completing the exterior outfitting is a practical chart table, ensuring navigation essentials are always within reach.

Electrical and mechanical equipment

Power is delivered by three Caterpillar C32 engines, each producing 1,800 hp and showing around 2,500 hours, complemented by two Kohler John Deere 89 kW generators. Comfort and control are assured with air-conditioning, bow and stern thrusters, and fin stabilizers, while extended autonomy comes

courtesy of an Idromar watermaker and an electric windlass for effortless anchoring. Entertainment on board includes a TV with antenna connection in the saloon.

Electronics & navigation equipment

The helm is equipped with a SIMRAD RA84 radar featuring a 19" TFT display, a 6' antenna, 12 kW output and a 72 Nm range, complemented by a CS69 navigation system with a matching 19" TFT display that integrates radar with a 6' 12 kW array, a chart plotter and a depth sounder. Precision positioning is delivered by a SIMRAD CP31 GPS chart plotter with a 6" display and GPS antenna, further supported by a dedicated GPS antenna with twelve parallel channels. Command and control are refined by a SIMRAD AP25 automatic pilot interfaced with GPS, while clear communications are assured through a SIMRAD RS87 DSC-D VHF. For data at a glance, the IS15 SIMRAD SPEED/TEMP/ECO/WIND system provides comprehensive readouts through one Multi digital display IS15 and one Analogue Wind IS15 display. A PC is connected to the SAT COM F77 for seamless satellite communication, and a closed-circuit (C.C.) TV monitor offers control to visualize the yacht's access as well as the engines and engine room systems, aided by a 12" touch screen monitor dedicated to the vessel's surveillance system. Everyday convenience is enhanced by a dual-function telephone/interphone, ceiling lighting with spots, full air conditioning and an electric hard top ceiling with special opening and closing movements. An array of antennas ensures flawless reception, including radar, GPS, VHF and wind antenna, together with TV, SAT TV and SAT COM F77 antennas. Nighttime and low-visibility safety are elevated by LOPOLIGHT LED navigation lights and a polished chrome triple-mouthed KAHLEMBERG fog horn, while SONY speakers deliver music from the internal sitting area and external illumination is provided by a watertight spot.

CONTACTS

Shestakov Yacht Sales is a brokerage company specializing in the sale and service of yachts worldwide. The company offers services for buying and selling both new and used motor yachts, sailing vessels, and luxury superyachts. They also provide yacht registration, insurance, technical maintenance, crew selection, and charter organization services across the U.S., Canada, Latin America, the Caribbean, and the Bahamas.

The founder and lead broker of the company is Andrey Shestakov, a licensed and certified expert with extensive experience in marine engineering and shipbuilding.

The company has an extensive network of partnerships with major yacht manufacturers worldwide and provides services in multiple languages, including Russian, Ukrainian, Spanish, and English. The office is in Dania Beach, Florida, USA.

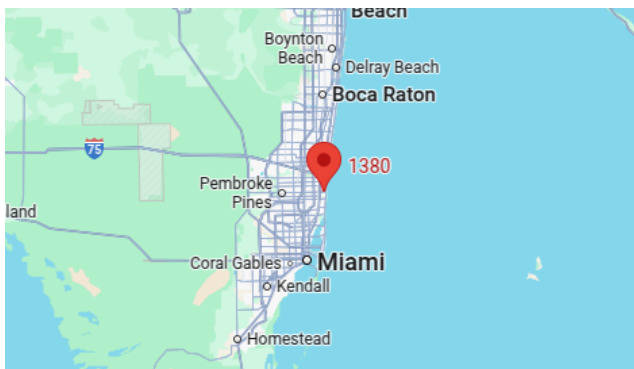
For more information and to view available yachts, you can visit the company's official website: <https://shestakovyachtsales.com>

Contact details

Phone: +1(954)274-4435

Email: andrey@shestakovyachtsales.com

Address



1380 Weeping Willow Way, Hollywood,
Florida 33019