



SHESTAKOV

Yacht Sales

## X130 TRIPLEX - EXTRA YACHTS



**Builder:** [EXTRA YACHTS](#)

**LOA:** 130' 0" (39.62 m)

**Year Built:** 2028

**Beam:** 28' 0" (8.59 m)

**Model:** X130 Triplex

**Max Draft:** 26' 10" (8.17 m)

**Price:** \$28,937,001.01 USD Subject to change.

**Cruising Speed:** 14 Knots (16.11 MPH)

[See full listing on our website](#)

**Location:** Ancona, Italy

**Max Speed:** 16 Knots (18.41 MPH)

If you would like to buy a yacht **X130 TRIPLEX - EXTRA YACHTS** or would like help answering any questions concerning purchasing, selling, or chartering a yacht, please call **+1(954)274-4435** or click here on <https://shestakovyachtsales.com>

---

# TABLE OF CONTENTS

---

<b>OVERVIEW .....</b>	<b>3</b>
<b>SPECIFICATIONS .....</b>	<b>5</b>
Basic Information .....	5
Dimensions .....	5
Speed, Capacities and Weight .....	5
Accommodations .....	5
Hull and Deck Information .....	6
Engine Information .....	6
<b>GALLERY .....</b>	<b>7</b>
<b>DETAILED DESCRIPTION .....</b>	<b>11</b>
<b>CONTACTS .....</b>	<b>14</b>

## OVERVIEW

---

Italian yard Extra Yachts, operating under the Palumbo Superyachts umbrella, has introduced the X130 Triplex, a 39.6-metre tri-deck that steps forward as the latest pinnacle of the line. Building on the momentum of the X100 Triplex—launched only last year and already expanded into a trio of sisterships—this new model affirms the marque’s continuing evolution in the luxury motor-yacht arena.

The sleek exterior, penned by long-standing collaborator Studio Agon, presents an all-aluminium silhouette that marries sinuous curves with bold geometry while remaining true to the brand’s aesthetic. A defining structural element is the mezzanine deck, positioned merely 90 centimetres above the main deck to preserve unbroken aft sightlines and to create twin lounge areas split by a sculptural fireplace, a composition that emphasises both sociability and cinematic views.

Designed to accommodate both guests and crew with discretion and comfort, the X130 Triplex offers nine cabins in total: five guest suites arranged to host 12 guests and four crew cabins for seven crew members. The guest layout comprises four double cabins with en suites, two VIPs with double berths and two twin cabins on the lower deck. The main-deck owner’s stateroom benefits from a private office, vanity, dedicated en suite and an expansive walk-in wardrobe, while an alternate configuration can convert the upper deck into an entirely private owner’s domain. Interior appointments by Laura Brocchini Design favour a refined palette of champagne and cream, enriched by marble detailing and soft, ambient lighting to create an inviting atmosphere throughout.

Entertaining areas are composed with thoughtful proportions: the main saloon is arranged around twin semicircular sofas with a formal dining setting for ten, complemented by a skylounge featuring a bar and comfortable lounge seating.

The sundeck serves as the yacht's social hub, offering a panoramic forward lounge, al fresco dining, a generous bar counter and two sunbeds that flank a sea-facing infinity pool, while the upper deck cockpit provides a more secluded retreat with plush sofa seating. Propulsion is provided by twin 2,000 hp MAN diesels, yielding a projected top speed of 16 knots and an economical cruise at 14 knots. The X130 Triplex measures an 8.4-metre beam and registers 397 GT.

# SPECIFICATIONS

---

## Basic Information

---

**Model Year:**  
2028

**Country:**  
Italy

**Year Built:**  
2028

## Dimensions

---

**LOA:**  
130' 0" (39.62 m)

**Max Draft:**  
26' 10" (8.17 m)

**Beam:**  
28' 0" (8.59 m)

## Speed, Capacities and Weight

---

**Cruise Speed:**  
14 Knots (16.11 MPH)

**Water Capacity:**  
2113 Gallons

**Max Speed:**  
16 Knots (18.41 MPH)

**Fuel Capacity:**  
12680 Gallons

## Accommodations

---

**Crew Cabin:**  
4

## Hull and Deck Information

---

**Hull Material:**  
Aluminum Yachts

**Hull Designer:**  
Extra Yachts

**Deck Material:**  
Aluminum

**Interior Designer:**  
Extra Yachts

**Hull Configuration:**  
N/A

## Engine Information

---

**Engines:**  
2

**Engine Type:**  
Inboard

**Manufacturer:**  
MAN

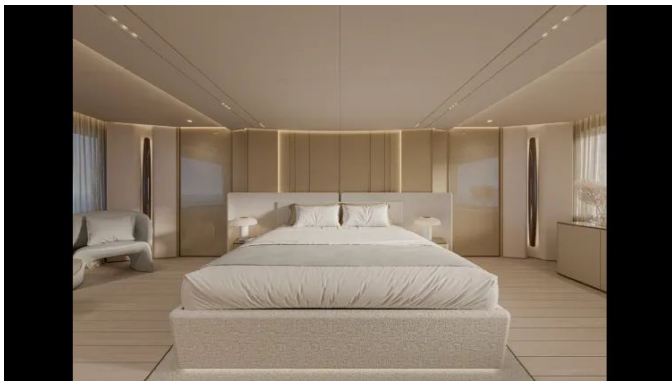
**Fuel Type:**  
Diesel

# GALLERY









---

# DETAILED DESCRIPTION

---

## About the X130 Triplex

---

Born from the collaboration between Studio Agon and Extra Yachts, the X130 Triplex opens a new chapter in luxury yachting—a 40-metre vessel that transforms passage into pure possibility. Elegantly proportioned, the design celebrates the Triplex lineage with softened outer lines balanced by decisive geometric forms. Both hull and superstructure are fashioned from aluminum, resulting in a yacht that measures 40 metres in length, spans a maximum beam of 8.4 metres and registers 397 GT.

At the heart of the design is a distinctive mezzanine deck of 30 sqm, raised a mere 90 cm above the main deck to preserve panoramic sightlines. This elevated salon is punctuated by adjoining lounge areas separated by a sculptural fireplace, creating an intimate yet expansive atmosphere that invites relaxation and socialising. Below, the open-air beach club embodies a true waterside lifestyle: fold-down side and aft platforms extend to form a 60 sqm waterfront terrace positioned only 60 cm above the sea, complete with a day head, a separate shower and direct access to the tender garage.

Luxury accommodation on board is flexible to suit an owner's preference, with a dual master suite concept that allows either a full-beam main-deck owner's suite or an entire private upper deck dedicated to the owner. The main deck further offers a generous lounge and a fully equipped galley adjacent to the owner's quarters. Down below, guests are hosted in four en-suite double cabins—two VIP staterooms and two twin cabins—ensuring comfort and privacy for all aboard.

## A spirit of innovation

---

The EXTRA Yachts collection is distinguished by a signature mix of rare qualities that redefine the experience of venturing to sea and articulate a fresh seafaring philosophy. Each vessel is conceived to move in seamless harmony with the water, offering fully bespoke customization and an exceptional level of onboard comfort when underway, achieved through superior seakeeping and notably reduced acoustic levels. Hulls and systems are optimized for fuel efficiency to support environmental sustainability while delivering genuine long-range cruising capability. A beam that exceeds that of comparable yachts creates unprecedented interior volume within the class, most notably across the bridge and salon areas. The range is organized into three dedicated lines—FAST, TRIPLEX, and GLOBAL—covering lengths from 56 to 130 feet, with hulls built in composite materials strengthened with carbon fiber or fashioned in aluminum.

## About Palumbo Superyachts

---

Originating in 2008 with the creation of the Columbus Yachts marque, Palumbo Superyachts marked a significant milestone in 2011 with the launch of its inaugural 54 metre superyacht, aptly named “Prima” (“the First”). Today the company holds a prominent position on the global stage as a builder of yachts and superyachts crafted in composite and metal, operating from two Mediterranean shipyards in Ancona and Savona and presenting its creations under the distinguished names ISA Yachts, Columbus Yachts, Mondomarine and Extra Yachts.

## Disclaimer

---

The particulars relating to this yacht have been supplied in good faith;

however, their accuracy cannot be guaranteed and no warranty is given as to the condition of the vessel. The offering may be subject to prior sale, an alteration in price, or withdrawal from the market at any time without notice. These details are provided by the yacht broker solely as a convenience to clients and should not be construed as a formal representation of any specific yacht for sale.

# CONTACTS

---

Shestakov Yacht Sales is a brokerage company specializing in the sale and service of yachts worldwide. The company offers services for buying and selling both new and used motor yachts, sailing vessels, and luxury superyachts. They also provide yacht registration, insurance, technical maintenance, crew selection, and charter organization services across the U.S., Canada, Latin America, the Caribbean, and the Bahamas.

The founder and lead broker of the company is Andrey Shestakov, a licensed and certified expert with extensive experience in marine engineering and shipbuilding.

The company has an extensive network of partnerships with major yacht manufacturers worldwide and provides services in multiple languages, including Russian, Ukrainian, Spanish, and English. The office is in Dania Beach, Florida, USA.

For more information and to view available yachts, you can visit the company's official website: <https://shestakovyachtsales.com>

## Contact details

---

**Phone:** +1(954)274-4435

**Email:** [andrey@shestakovyachtsales.com](mailto:andrey@shestakovyachtsales.com)

## Address

---



1380 Weeping Willow Way, Hollywood,  
Florida 33019