



SHESTAKOV

Yacht Sales

## AVALINA - WESTPORT



**Builder:** [WESTPORT](#)

**LOA:** 130' 0" (39.62 m)

**Year Built:** 2003

**Beam:** 26' 0" (8 m)

**Model:** 130

**Max Draft:** 21' 4" (6.50 m)

**Price:** \$8,450,000 USD Subject to change.

**Cruising Speed:** 13 Knots (14.96 MPH)

[See full listing on our website](#)

**Location:** Fort Lauderdale, United States

**Max Speed:** 24 Knots (27.62 MPH)

If you would like to buy a yacht **AVALINA - WESTPORT** or would like help answering any questions concerning purchasing, selling, or chartering a yacht, please call **+1(954)274-4435** or click here on <https://shestakovyachtsales.com>

---

# TABLE OF CONTENTS

---

<b>OVERVIEW .....</b>	<b>3</b>
<b>SPECIFICATIONS .....</b>	<b>4</b>
Basic Information .....	4
Dimensions .....	4
Speed, Capacities and Weight .....	4
Accommodations .....	5
Hull and Deck Information .....	5
Engine Information .....	5
<b>GALLERY .....</b>	<b>6</b>
<b>DETAILED DESCRIPTION .....</b>	<b>14</b>
<b>CONTACTS .....</b>	<b>19</b>

## OVERVIEW

---

AVALINA is a 130' Westport motor yacht penned by naval architect William Garden with interiors by Pacific Custom Interiors. Delivered in 2003 and refitted in 2020, she presents a meticulously maintained semi-displacement superyacht that harmonises sea-kindly performance with refined onboard living. Built in GRP with a 26'3" beam, she provides a generous 280 GT of volume and is arranged to welcome up to 10 guests attended by 7 crew. Engineered for both speed and long-range cruising, she tops out at 24 knots, settles into an economical 13-knot cruise and offers an approximate range of 2,500 nautical miles, ideally suited to extended bluewater passages.

# SPECIFICATIONS

---

## Basic Information

---

**Model Year:**  
2003

**Country:**  
United States

**Year Built:**  
2003

## Dimensions

---

**LOA:**  
130' 0" (39.62 m)

**Max Draft:**  
21' 4" (6.50 m)

**Beam:**  
26' 0" (8 m)

## Speed, Capacities and Weight

---

**Cruise Speed:**  
13 Knots (14.96 MPH)

**Water Capacity:**  
1619 Gallons

**Max Speed:**  
24 Knots (27.62 MPH)

**Fuel Capacity:**  
9898 Gallons

**Gross Tonnage:**  
280 Pounds

## Accommodations

---

**Total Heads:**

6

**Crew Cabin:**

3

## Hull and Deck Information

---

**Hull Material:**

Fiberglass and Plastic Yachts

**Hull Designer:**

William Garden

**Deck Material:**

GRP

**Interior Designer:**

Pacific Custom Interiors

**Hull Configuration:**

Semi-Displacement

## Engine Information

---

**Engines:**

2

**Engine Type:**

Inboard

**Manufacturer:**

MTU

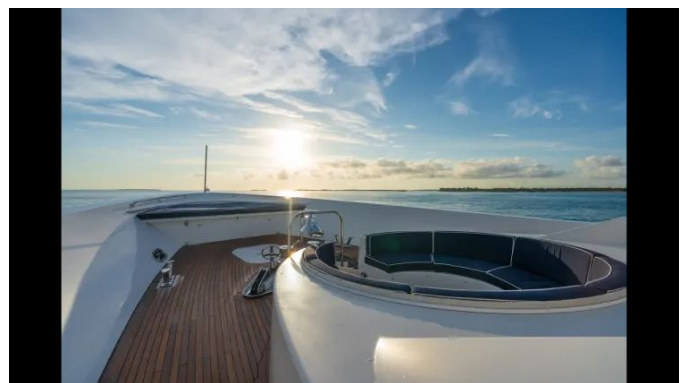
**Fuel Type:**

Diesel

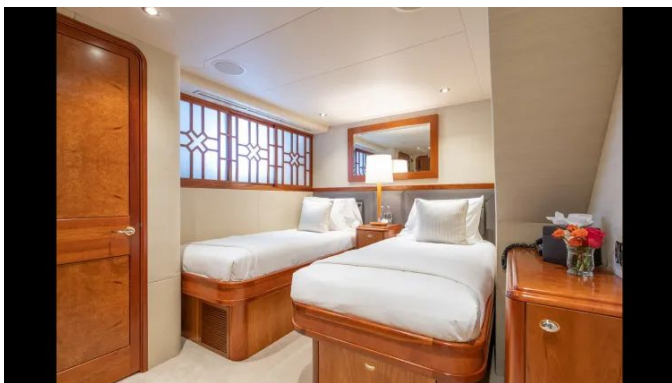
# GALLERY

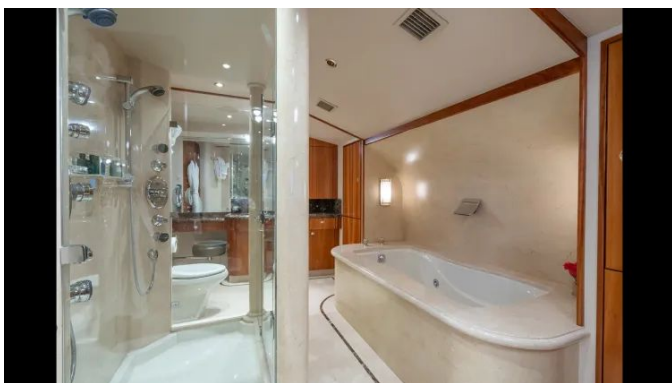
















---

# DETAILED DESCRIPTION

---

## Main specifications

---

Stretching to 130 feet (39.6 m) overall, with a sweeping beam of 26 feet 3 inches (8 m) and a draft of 6 feet 6 inches (1.98 m), this motor yacht presents an impressive yet practical silhouette. Launched in 2003 (model year 2003) and thoroughly updated during an extensive refit in 2020, she registers 280 GT and rides on a semi-displacement hull engineered to marry brisk performance with economical cruising. Configured to welcome 10 guests in refined comfort and tended by a professional crew of 7, her scale and pedigree make her equally suited to confident long-range passages and elegant, relaxed entertaining.

## Construction

---

Constructed by Westport, this yacht exemplifies the shipyard's distinguished build quality, guided by the celebrated naval architecture of William Garden and enriched by the sophisticated interior design of Pacific Custom Interiors. The GRP hull furnishes a sturdy yet lightweight and highly durable platform, resulting in assured performance and enduring comfort while at sea.

## Speed & capacities

---

Meticulously engineered for assured passagemaking, she attains a maximum of 24 knots and settles into an efficient 13-knot cruise, at which speed she delivers a 2,500 nm range with a fuel burn of 52 gph, calculated on a 9,984 gallons supply; generous tankage underpins her autonomy, with fuel capacity of 9898.53 Gal / 37470 L, fresh water capacity of 1619.37 Gal / 6130 L, grey water capacity of 940 Gal / 3,560 L, black water capacity of 1,360 Gal / 5,150 L, and lube oil capacity of 77 Gal / 291 L.

## Machinery

---

Propulsion is delivered by a pair of MTU 12V 4000 engines producing a combined 2,734 Hp, each engine presently recording 3,400 hours since a W 6 major overhaul, with serial number 5262001231 to port and 5262001229 to starboard. Electrical generation is entrusted to two Kohler 65EOZD generator sets, each running at 1,800 rpm, with both the port and starboard units showing 1,900 hours since overhaul. Shore power compatibility is provided by an ASEA 170 520V, 3 Phase, 60Hz system, backed by three sets of 12V batteries and six sets of 24V batteries to ensure dependable house and start-up power. Comfort and seakeeping are enhanced by a Naiad 521 stabilizer system with Datum control to provide effective at anchor stabilization, confirmation that stabilizer at anchor is operational. Close-quarters handling is supported by a Wesmar Vortex V 2 16 bow thruster and a Jastram steering system actuated by PTO-driven pumps off the main engines. Fresh water independence is assured by a Sea Recovery SRV 1500 2 AWM watermaker complemented by an Aquabox 110V fresh water pump, while fuel polishing and water removal are managed by an RCI Technologies water separator. Climate control aboard is provided by a Dometic 6 ton system rated at 72 BTU, delivering refined environmental comfort throughout the yacht.

## Communication & navigational equipment

---

Within the pilothouse, communications are centred on a Fleet 33 Inmarsat SATCOM suite, complemented by a Nortel four-line telephone system, an Icom IC-M602 VHF and a Furuno NX700 Navtex, providing robust ship-to-shore and onboard voice and data links. The bridge is equipped with a comprehensive navigation suite featuring Furuno 2115B X-band and Furuno 2115 ARPA X-band radars, a Sperry Marine Navigat X MK2 gyrocompass and a Sperry Marine

Naviplot 4000+ autopilot, with depth information from a Furuno RD-33 and GPS positioning via a Furuno GP-33 integrated into the Bridge Dash. For onboard connectivity and entertainment a VSAT1 system is installed and iPads are provided on board to ensure seamless access to information and leisure services.

## **Galley & laundry equipment**

---

The main galley has been meticulously arranged for culinary excellence, boasting two Miele ovens that allow simultaneous baking and roasting, an LG microwave for swift reheating, a Kitchen Aid refrigerator to preserve fresh provisions and a Kitchen Aid freezer for deep-chill storage. The crew galley and mess support everyday service with a Whirlpool refrigerator and a Uline refrigerator, complemented by an LG microwave for rapid turnarounds. Onboard care is completed by two Miele washing machines and two Miele clothes dryers, providing professional-grade laundering between passages.

## **Deck equipment**

---

The foredeck is equipped with a Maxwell VWC 6000 anchor windlass, designed to take confident charge of the ground tackle and paired with two Poole 600 lb anchors and two 400' runs of 5/8" anchor chain. Aft warping capstans provide precise control of stern lines, while the Nautical Structures CC2000 EX156 main tender davits offer a substantial 909 kg lifting capacity. Guest access is made effortless and refined by a Bensenzoni passarelle.

## **Security, fire fighting & safety equipment**

---

Every aspect of the yacht's protection has been thoughtfully specified, beginning with a Pelco CCTV installation that deploys nine cameras across four

monitors for comprehensive visual coverage. Fire safety is entrusted to a bespoke fire control system manufactured by Westport, supported by twenty-six portable fire extinguishers and a fully integrated alarm network. The vessel's lifesaving inventory includes two Zodiac SOLAS 25 life rafts and four life rings, reinforced by two EPIRBs and three distress flares, and a well-equipped medical bag is carried on board to ensure readiness for any eventuality.

## Upgrades

---

Meticulously cared for, the yacht received a full exterior repaint in 2017, and the MegaFend mooring fender system was fully refurbished—every fender hook was renewed and additional hooks were fitted for stern use, supported by a selection of newly acquired MegaFend fenders specifically purchased for the vessel. Navigation accuracy has been upgraded with the installation of a new Furuno GPS Gyro system. Interior readiness for charter was advanced by the addition of a master closet divider, while the boat deck non-skid was refreshed with a new coat to ensure secure footing. In May 2025 the yacht's operational capability was further enhanced with the acquisition of a new tender, a sixteen-foot Walker Bay equipped with a Honda motor, and the installation of an all-new exhaust system serving the main engines and generators. In August 2025 three hydraulic system heat exchangers were removed and professionally serviced. The propulsion package received thorough attention in 2025 with a complete valve job on both MTU main engines (Mendol) in June 2025, followed by a full injector replacement on the MTU mains later that year. Daily service and efficiency aboard are supported by a new dishwasher installed in the stew pantry (galley).

## Disclaimer

---

The particulars presented here are supplied in good faith for informational purposes, yet their accuracy cannot be assured and no warranty is made as to the condition of the vessel. This yacht may be subject to prior sale, alteration of price, or removal from the market without prior notice. The information is offered as a courtesy by the yacht broker to its clients and should not be interpreted as formal or exclusive representation of any specific yacht for sale.

# CONTACTS

---

Shestakov Yacht Sales is a brokerage company specializing in the sale and service of yachts worldwide. The company offers services for buying and selling both new and used motor yachts, sailing vessels, and luxury superyachts. They also provide yacht registration, insurance, technical maintenance, crew selection, and charter organization services across the U.S., Canada, Latin America, the Caribbean, and the Bahamas.

The founder and lead broker of the company is Andrey Shestakov, a licensed and certified expert with extensive experience in marine engineering and shipbuilding.

The company has an extensive network of partnerships with major yacht manufacturers worldwide and provides services in multiple languages, including Russian, Ukrainian, Spanish, and English. The office is in Dania Beach, Florida, USA.

For more information and to view available yachts, you can visit the company's official website: <https://shestakovyachtsales.com>

## Contact details

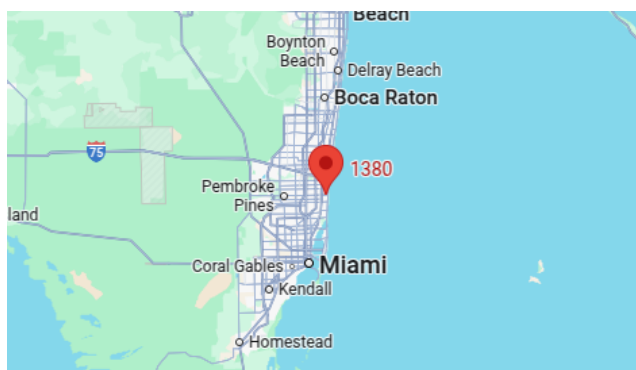
---

**Phone:** +1(954)274-4435

**Email:** [andrey@shestakovyachtsales.com](mailto:andrey@shestakovyachtsales.com)

## Address

---



1380 Weeping Willow Way, Hollywood,  
Florida 33019