

AVALINA - WESTPORT



Builder: [WESTPORT](#)

LOA: 130' 0" (39.62 m)

Year Built: 2003

Beam: 26' 0" (8 m)

Model: N/A

Min Draft: 21' 4" (6.50 m)

Price: \$7,995,000 USD Subject to change.

Cruising Speed: 13 Knots (14.96 MPH)

[See full listing on our website](#)

Location: Fort Lauderdale, United States

Max Speed: 24 Knots (27.62 MPH)

TABLE OF CONTENTS

OVERVIEW	3
SPECIFICATIONS	4
Basic Information	4
Dimensions	4
Speed, Capacities and Weight	5
Accommodations	5
Hull and Deck Information	5
Engine Information	6
GALLERY	7
DETAILED DESCRIPTION	17
CONTACTS	23

OVERVIEW

AVALINA is a 130' Westport tri-deck motor yacht (2003 / 2020), recently returned from the yard having received a thoughtful series of upgrades: re-sanded teak decks, a complete exterior wax, updated galley appliances, a new water purification system, MTU main engine service, stabilizer service, and additional enhancements. A full work list is available upon request.

She underwent a full exterior repaint and engine overhaul in 2019, benefitted from a comprehensive refit in 2020, and received generator rebuilds in 2023, leaving her in refreshed, highly serviceable condition.

Accommodating 10 guests across five staterooms, AVALINA's interior is anchored by a main-deck master suite appointed with a queen bed and a Jacuzzi tub, complemented on the lower deck by two double cabins and two twin cabins. Crew quarters support seven personnel. Rich cherry joinery throughout imparts a warm, timeless elegance befitting a classic superyacht.

The tri-deck arrangement is designed for relaxed living and effortless entertaining: a generous main salon with an adjacent formal dining area, a skylounge offering a games table and a sit-up bar, and an expansive aft deck arranged for circular alfresco dining with a wet bar and ample lounge seating. Above, the sundeck provides sweeping panoramic views, sun pads, and a Jacuzzi for leisure and socializing.

Propulsion comes from twin 2,735 hp MTU engines, delivering a top speed of 24 knots and a comfortable cruise at 13 knots, while Naiad 521 stabilizers enhance comfort both underway and at anchor. Located in Fort Lauderdale, this American-built Westport 130 superyacht is turn-key and ready for her next owner, ideal as a luxury motor yacht, superyacht, and tri-deck yacht.

SPECIFICATIONS

Basic Information

Category:
Motor yachts

Year Built:
2003

Sub category:
Motor Yacht

Country:
United States

Model Year:
2003

Dimensions

LOA:
130' 0" (39.62 m)

Beam:
26' 0" (8 m)

Min Draft:
21' 4" (6.50 m)

Speed, Capacities and Weight

Cruise Speed:

13 Knots (14.96 MPH)

Water Capacity:

1619.37 Gallons

Max Speed:

24 Knots (27.62 MPH)

Fuel Capacity:

9898.53 Gallons

Gross Tonnage:

298 Pounds

Accommodations

Total Heads:

6

Crew Berths:

7

Hull and Deck Information

Hull Material:

Fiberglass and Plastic Yachts

Hull Designer:

N/A

Deck Material:

GRP

Interior Designer:

Pacific Custom Interiors

Hull Configuration:

N/A

Engine Information

Engines:

2

Engine Type:

Inboard

Manufacturer:

MTU

Fuel Type:

Diesel

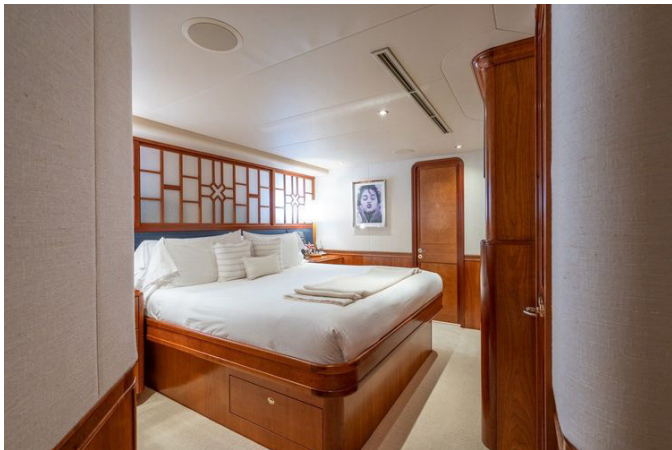
GALLERY





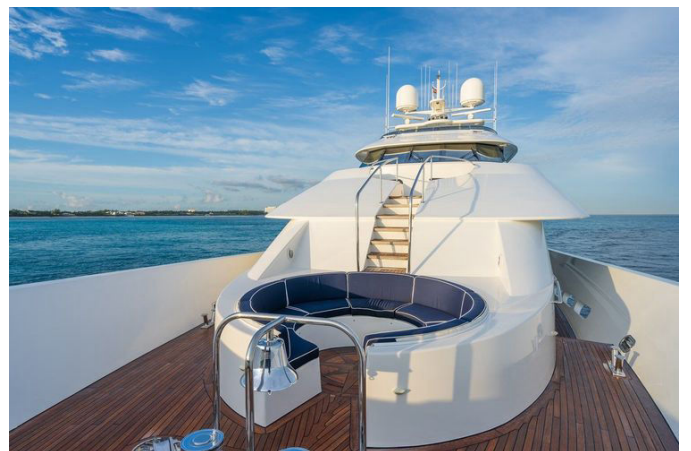
















DETAILED DESCRIPTION

Main specifications

A Westport motor yacht of presence and pedigree, this one hundred thirty-foot (39.6 m) semi displacement vessel balances volume and velocity with effortless grace, offering a striking profile and substantial internal volume for her class. Her length at the waterline is not specified in the present particulars, yet her beam of 26 ft 3 in (8 m) and shallow 6 ft 6 in (1.98 m) draft deliver enviable accessibility to harbors and anchorages that many larger yachts must forgo. Launched and completed in 2003 with a model year matching 2003, she received a thoughtful refit in 2020 that preserved her timeless profile while elevating onboard comfort and systems. Registered under HIN WPS01506C204, she measures 298 GT and welcomes ten guests attended by seven professional crew, the habitability and service expectations befitting a bluewater yacht. Designed by naval architect William Garden with interiors by Pacific Custom Interiors and constructed in robust GRP, she runs to a maximum speed of 24 knots and cruises comfortably at 13 knots. Endurance is equally compelling: 24 knots maximum; approximately 2,500 nautical miles of range at 13 knots with consumption of about 52 gph and a reference fuel load cited at 9,984 gallons. Her capacities are generous and support extended cruising, with fuel of 9,898.53 gallons (37,470 liters), fresh water of 1,619.37 gallons (6,130 liters), grey water of 940 gallons (3,560 liters), black water of 1,360 gallons (5,150 liters), and lube oil capacity of 77 gallons (291 liters). Flying the Cayman Islands flag, she embodies bluewater capability, refined craftsmanship, and the enduring appeal of the Westport name.

Machinery

Power flows from two MTU 12V 4000 main engines rated at 2,734 hp, with

serial numbers 5262001231 to port and 5262001229 to starboard, showing approximately 1,746 hours on the port engine and 1,749 hours on the starboard, a record that speaks to careful operation and ongoing service. Electrical generation is assured by two Kohler 65EOZD sets operating at 1,800 rpm, with the port generator at about 19,119 hours and the starboard at about 19,108 hours, all stabilized by ASEA shore power conversion at 170–520V, three phase, 60Hz to accommodate variable marina supplies. Ship's batteries comprise three 12V sets and six 24V sets for dependable starting and house loads, while underway and at rest comfort is preserved by a Naiad 521 stabilizer system with datum control that provides true at anchor stabilization and improves seakeeping underway. Precise handling is delivered by Jastram steering powered via PTO pumps from the main engines, ensuring predictable helm response. Hotel and utility systems are equally comprehensive: a Sea Recovery SRV 1500 2 AWM watermaker supports autonomy, a Wesmar Vortex V 2 16 bow thruster aids close quarters maneuvering, an RCI Technologies fuel water separator polishes the fuel, and the freshwater system employs an Aquabox 110V pump; climate control comes from a Dometic plant rated at 6 tons with 72 BTU noted, creating a consistently serene onboard environment.

Communication and navigational equipment

From the pilothouse global connectivity and command are effortless, with SAT COM via Fleet 33 Inmarsat partnering with a Nortel four line telephone system to keep ship and shore linked, while clear ship to ship and ship to shore communications are handled by an Icom IC M602 VHF and Navtex reception via Furuno NX700 for weather and safety messages. Navigation is anchored by dual Furuno radars—2115B X band and 2115 ARPA X band—fed by a Sperry Marine Navigat X MK2 gyrocompass and guided with the authority of a Sperry Marine Naviplot 4000+ autopilot, while depth and position are crisply displayed through a Furuno RD 33 sounder and Furuno GP 33 GPS, including integrated

bridge dash readouts for complete situational awareness. Entertainment and connectivity for guests are equally current, with VSAT1 onboard and iPads available, ensuring seamless streaming, work, and relaxation wherever the voyage leads.

Galley and laundry equipment

The main galley is specified to professional standard and arranged to support refined service, featuring two Miele ovens for elegant cooking and presentation, an LG microwave for swift preparation, and matched Kitchen Aid refrigeration and freezing to safeguard the chef's provisions and allow disciplined provisioning for long passages. The crew galley and mess are equally well considered to maintain service continuity, equipped with Whirlpool and Uline refrigerators for efficient storage and an LG microwave for round the clock support, while laundry care is swift and silent thanks to two Miele washing machines and two Miele clothes dryers that keep linens and wardrobe impeccably presented throughout every passage.

Deck equipment

Purposeful hardware underpins every evolution on deck and reflects an emphasis on reliability and guest convenience. Ground tackle is led by a Maxwell VWC 6000 anchor windlass feeding two Poole anchors at 600 lb each, riding on twin lengths of chain specified at two runs of 400 ft in 5/8 in, providing secure holding in a wide range of seabeds. Aft warping capstan specification is not provided in the present documentation. Tender handling comes courtesy of a Nautical Structures CC2000 EX156 davit with a 909 kg capacity, while boarding and guest flow are refined by a Bensenzoni passarelle. The inventory of leisure craft is current and compelling, including a sixteen foot Walker Bay tender with Honda motor delivered in May 2025, two

Yamaha jet skis, and two CAYAGO AG Seabobs, ensuring days afloat are as engaging as the passage itself. As with any bespoke yacht, selections remain subject to change and negotiation during the purchase process.

Security, fire fighting and safety equipment

Vigilant by design, the yacht employs a Pelco CCTV suite with nine cameras observed over four dedicated monitors, providing clear situational awareness throughout guest and service areas and supporting crew safety protocols. Fire protection is anchored by a custom Westport manufactured fire control system, supported by twenty six portable fire extinguishers and an integrated alarm network to ensure rapid detection and response. Safety equipment is specified for confidence offshore and includes two Zodiac Solas 25 life rafts, four life rings, two EPIRBs, three flares, and a medical bag, together forming a comprehensive envelope of protection for guests and crew alike.

Disclaimer

The Company presents the particulars of this vessel in good faith but cannot guarantee or warrant their accuracy, nor the vessel's condition; prospective buyers are encouraged to instruct their agents or surveyors to verify details of concern. This vessel is offered subject to prior sale, price change, or withdrawal without notice.

Upgrades and repairs list

As of September 2025, the yacht has benefited from a comprehensive program of upgrades and restorative works tailored to elevate reliability, comfort, and presentation across all guest and engineering spaces. The freshwater system was modernized with new Headhunter Aquabox and Mach 5 pumps and the

legacy DC pump was replaced, improving distribution and redundancy. Both jet skis underwent full inspection and repair by Jet Ski Doctor with service and replacement of engine and unit components, and the MegaFend mooring fender system was renewed with all fender hooks refurbished and additional hooks added for stern use alongside a suite of new MegaFend fenders. New weather covers were fabricated for the bow, bow settee, flybridge, boat deck, and aft deck, and all cushions for the bow, flybridge, boat deck, and aft deck were replaced to refresh exterior comfort. In the engineer's head the macerator pump was replaced, while the crew galley bilge pump was renewed with a new unit and float switch; all crew mattresses and sheet sets were replaced, and the SeaBobs received two unit battery replacements in April 2025. Numerous upgrades and cleanups were completed to the NEMA navigation backbone and a new Furuno GPS Gyro was installed alongside annual service to the original gyro system; the ship's LAN saw extensive upgrades and replacements to modernize connectivity. The windshield wiper system was replaced and all deck gas shocks for hatches were renewed; every interior cabinet and drawer push button was repaired or replaced. A divider was added to the master closet for charter operations and new wood paneling with railings was installed for the guest stairwells; the boat deck non skid was repainted. A new tender — a sixteen foot Walker Bay with Honda motor — was purchased in May 2025, and new crew plates and cutlery were added. Mineral replacement filters were installed at the stew pantry sink and the crew galley sink, and two new aft deck stair gates were added to the swim platform. An all new exhaust system for the main engines and generators was installed in May 2025, with new replacement filters for the DPF system stored at Metcalf Marine, FLL. Two new jet ski covers were added and new auto shades were installed in the master stateroom. Whisper Wall overheads were replaced in the pilothouse and salon/dining room, pilothouse wallpaper was renewed, and a fully new entertainment system was installed across the yacht. The flybridge gained a new refrigerator and ice maker, two new

sunshade systems, and the boat deck received a new sunshade system as well. Three hydraulic system heat exchangers were removed and serviced in August 2025, and four Naiad stabilizer hydraulic rams were removed and rebuilt. A complete valve job was performed on both MTU main engines by Mendol in June 2025, accompanied by complete injector replacement on the MTU mains. A new air handler was installed in the AC closet/lazarette, and a new control system was fitted for the lazarette fridge/freezer. All deck lights were replaced and the swim platform shower system was renewed; in the salon armchairs and the sofa were newly re-upholstered. Various pic fittings and valves in the Headhunter system were replaced and lockable drawers were installed in the master stateroom. The yacht's exterior received a full wax in September 2025 and all guest areas were refreshed with new sheets and duvets. A new pilothouse printer was added, the galley sink faucet was replaced and a new dishwasher installed in the stew pantry. All teak decks were sanded in June 2025, the galley countertop extender was removed and replaced, and the granite countertops were polished. DEIF system control box assemblies were replaced and the pilothouse windscreen was renewed. A new water filtration system and tap were installed in the stew pantry and the master shower floor was newly painted. The propellers were checked for balance and S-classed, shafts were pulled and checked for alignment and new strut bearings were installed; port and starboard engines and transmissions, as well as strut tubes, were checked with laser alignment. New Naiad stabilizer fin shaft bearings were installed. All new zincs were applied to the underwater body and running gear and new PropSpeed was applied to the running gear, sealing the program with enduring performance.

CONTACTS

Shestakov Yacht Sales is a brokerage company specializing in the sale and service of yachts worldwide. The company offers services for buying and selling both new and used motor yachts, sailing vessels, and luxury superyachts. They also provide yacht registration, insurance, technical maintenance, crew selection, and charter organization services across the U.S., Canada, Latin America, the Caribbean, and the Bahamas.

The founder and lead broker of the company is Andrey Shestakov, a licensed and certified expert with extensive experience in marine engineering and shipbuilding.

The company has an extensive network of partnerships with major yacht manufacturers worldwide and provides services in multiple languages, including Russian, Ukrainian, Spanish, and English. The office is in Dania Beach, Florida, USA.

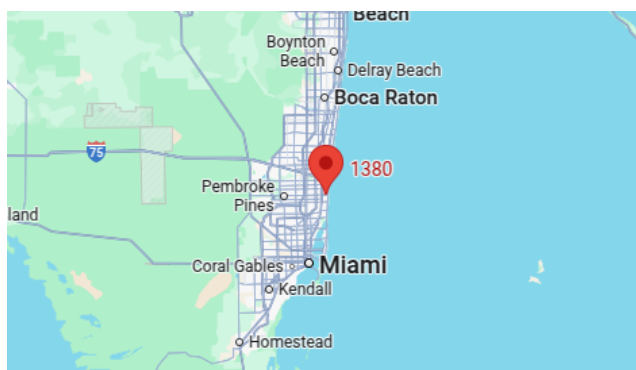
For more information and to view available yachts, you can visit the company's official website: <https://shestakovyachtsales.com>

Contact details

Phone: +1(954)274-4435

Email: andrey@shestakovyachtsales.com

Address



1380 Weeping Willow Way, Hollywood,
Florida 33019