

INACE 135 - INACE



Builder: [INACE](#)

LOA: 135' 0" (41.15 m)

Year Built: 2027

Beam: 27' 0" (8.36 m)

Model: N/A

Min Draft: 21' 1" (6.42 m)

Price: - Subject to change.

Cruising Speed: 12 Knots (13.81 MPH)

[See full listing on our website](#)

Location: Fortaleza, Brazil

Max Speed: 15 Knots (17.26 MPH)

TABLE OF CONTENTS

OVERVIEW 3

SPECIFICATIONS 5

 Basic Information 5

 Dimensions 5

 Speed, Capacities and Weight 5

 Accommodations 6

 Hull and Deck Information 6

 Engine Information 6

GALLERY 7

DETAILED DESCRIPTION 9

CONTACTS 22

OVERVIEW

Experience Unmatched Luxury: The 2025 Overing Yacht

Embark on a journey of elegance and refinement with this exquisite 135-foot yacht, expertly constructed in 2025 and currently moored in the stunning waters of Brazil. This extraordinary vessel is more than just a yacht; it is a floating haven crafted for those who cherish life's finest pleasures.

Boasting a generous 27-foot beam and a full displacement hull designed by the esteemed Overing Yacht Designs, this yacht ensures stability and comfort as you sail through the azure seas at a cruising speed of 12 knots, with the ability to reach a top speed of 15 knots. The sturdy steel hull and deck not only guarantee longevity but also radiate a timeless allure that enchants all who step aboard.

Inside, the luxurious interior, envisioned by the renowned Kirschstein Designs Ltd, offers a perfect fusion of elegance and practicality. The yacht comfortably houses up to eight crew members in four beautifully appointed cabins, ensuring that every need is met with exceptional service. With a total of eight heads, privacy and convenience are prioritized, allowing you and your guests to relax in complete comfort.

The yacht's impressive water capacity of 2,950 gallons and fuel capacity of 22,500 gallons allow for extended journeys without compromise. Whether hosting an intimate gathering or a grand celebration, the expansive deck space invites you to soak up the sun or enjoy dining under the stars.

This yacht is more than a vessel; it is an experience waiting to unfold. If you seek to purchase a yacht that embodies luxury and adventure, this is your perfect opportunity. With yacht sales available at the current boat location, you can easily turn this dream into reality. Seize the chance to own a piece of maritime excellence that promises unforgettable moments on the open sea.

Discover the possibilities of yacht ownership and elevate your lifestyle with this remarkable yacht for sale. Your journey to luxury starts here.

SPECIFICATIONS

Basic Information

Category:
Motor yachts

Year Built:
2027

Sub category:
Expedition Yacht

Country:
Brazil

Model Year:
2027

Dimensions

LOA:
135' 0" (41.15 m)

Beam:
27' 0" (8.36 m)

Min Draft:
21' 1" (6.42 m)

Speed, Capacities and Weight

Cruise Speed:
12 Knots (13.81 MPH)

Water Capacity:
2950 Gallons

Max Speed:
15 Knots (17.26 MPH)

Fuel Capacity:
22500 Gallons

Accommodations

Sleeps:

1

Crew Cabin:

4

Total Heads:

8

Crew Berths:

8

Hull and Deck Information

Hull Material:

Steel Yachts

Hull Designer:

Overing Yacht Designs

Deck Material:

Steel

Interior Designer:

Kirschstein Designs Ltd

Hull Configuration:

Full Displacement

Engine Information

Engines:

2

Engine Type:

Inboard

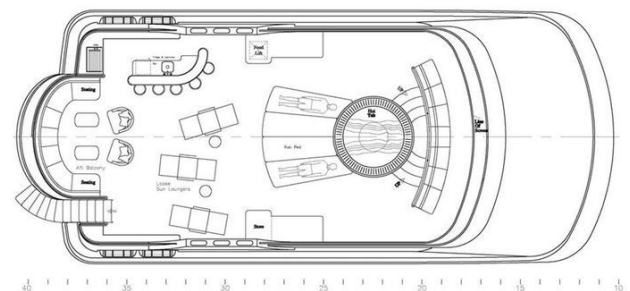
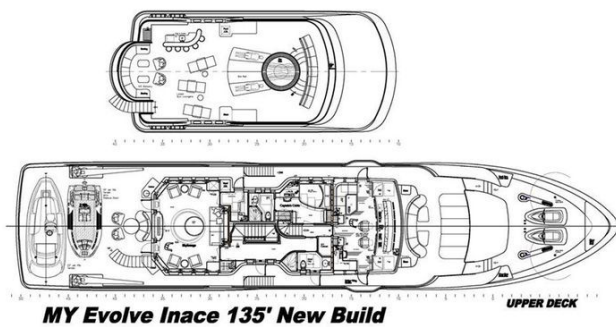
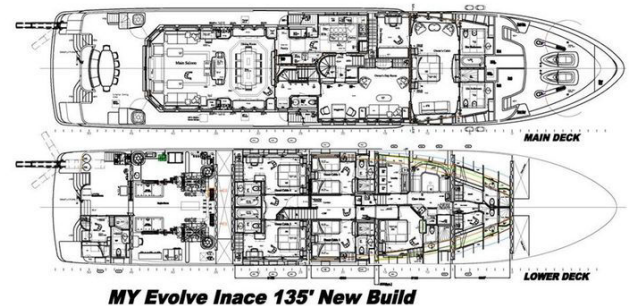
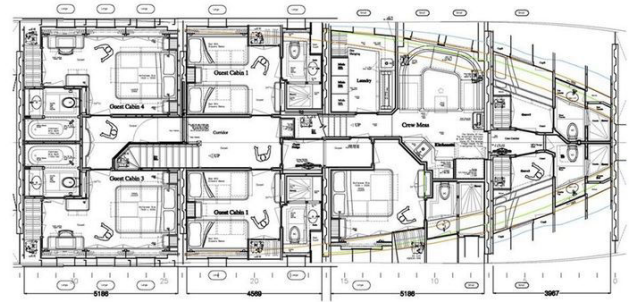
Manufacturer:

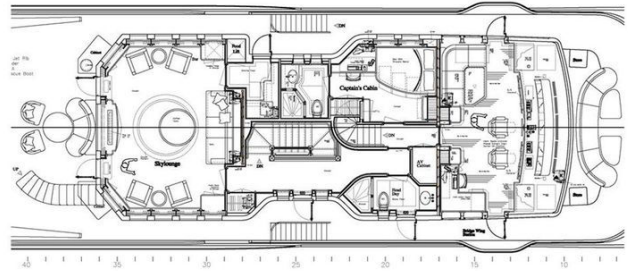
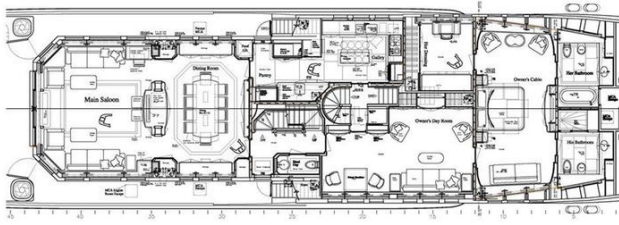
Caterpillar

Fuel Type:

Diesel

GALLERY





DETAILED DESCRIPTION

Section name

The INACE 135' (41.2M) Long Range Mega Motor Yacht captures the essence of the esteemed INACE Explorer Vessels, artfully merging the formidable capabilities of a global cruising ship with the refined elegance of a luxury yacht. This vessel is crafted with precision to deliver the opulent experience of a yacht while retaining the efficiency and dependability typical of aft house explorer vessels.

The 135' yacht features a stunning Kirschstein Design for both its interior and exterior, ensuring a refined aesthetic throughout. The high-performance hull, designed by Overing Yacht Design, a leader in the industry, has undergone extensive tank testing in various sea conditions. In demanding sea state 4 scenarios, with wave heights reaching 8' 3" and wind speeds of 27 knots head-on, the yacht achieves an impressive range of over 4000 nautical miles. Cruising at 10 knots, it offers nearly 6000 nautical miles, and in calm waters at 12 knots, it extends to an extraordinary 7000 nautical miles. The hull is tested to exceed speeds of 15 knots, ensuring not only efficiency but also seaworthiness and a smooth journey.

The yacht's moderate 7' draft is a deliberate design choice, enabling it to enter harbors inaccessible to other vessels, while its exceptional spatial design offers the amenities and features usually found in much larger yachts. The first yacht in this series is currently being built, featuring an enhanced interior with paneled American cherry and custom moldings. The design thoughtfully includes large windows throughout, creating stunning vistas and filling the interior with a bright, open atmosphere.

The construction of this remarkable vessel takes about 30 months, promising a masterpiece of maritime engineering and design upon completion.

Specs.

The INACE 135' Long Range Mega Motor Yacht stands as a testament to exceptional engineering, crafted with meticulous precision and an eye for detail. Stretching 41.2 meters (135 feet) in length, this yacht features a waterline length of 36.58 meters (120 feet), ensuring a streamlined and efficient silhouette. Its maximum beam of 8.28 meters (27.5 feet) provides generous space for opulent accommodations and amenities. With a draft of 2.2 meters (7.2 feet), the yacht navigates diverse harbors and waterways effortlessly.

At full load, the yacht's displacement is about 243.2 long tons, highlighting its sturdy build and capacity. A standout feature is its fuel efficiency, with a fuel oil capacity of around 85,500 liters (22,500 US gallons), enabling extensive journeys. Cruising at 12.5 knots, the yacht offers an impressive range of 6,000 nautical miles, including reserves, making it perfect for long-distance adventures.

Onboard, the yacht boasts a fresh water capacity of approximately 11,020 liters (2,900 US gallons), ensuring comfort and convenience for prolonged sea voyages. The grey water and black water capacities are about 1,514 liters (400 US gallons) and 2,261 liters (600 US gallons) respectively, underscoring the yacht's commitment to sustainability and efficient waste management.

This splendid vessel is powered by two C32 Caterpillar main engines, each delivering 1100 horsepower at 2100 rpm, ensuring dependable performance and efficiency. The yacht cruises at 12.5 knots and can accelerate to a top speed of 15 knots, offering both relaxed travel and the capability to reach destinations swiftly.

In essence, the INACE 135' Long Range Mega Motor Yacht is a harmonious blend of luxury, performance, and practicality, crafted to satisfy the desires of discerning yacht enthusiasts who crave adventure without sacrificing comfort

or elegance.

Bulkheads - watertight compartments

The yacht's hull is meticulously crafted with a network of transverse and longitudinal watertight and oil-tight bulkheads, guaranteeing superior safety and structural soundness. These bulkheads divide the yacht into distinct sections, each fulfilling a unique role. At the bow lies the forepeak, followed by fresh water tanks, vital for extended journeys. The bow thruster compartment is strategically located to improve maneuverability, while the guest stateroom compartment provides luxurious quarters for guests. The master stateroom compartment offers a secluded and lavish sanctuary for the owner. Fuel oil tanks are strategically placed to optimize energy efficiency, and the engine room is designed for peak performance and easy maintenance access. Lastly, the steering gear compartment is essential for accurate navigation and control. This deliberate segmentation of the hull not only boosts the yacht's functionality but also ensures a secure and pleasant voyage for everyone on board.

Deck equipment

The deck equipment on this yacht is crafted with meticulous attention to detail, prioritizing both precision and practicality to ensure smooth operation and user-friendly functionality. The anchoring system includes two sturdy Maxwell windlasses, each capable of handling 8000 lbs and fitted with 450 feet of 5/8" high-strength chain. These are strategically placed on the port and starboard sides, offering dependable anchoring solutions. Complementing this are two 300 kg Navy-style stainless steel anchors, elegantly housed in polished stainless steel pockets at the bow on each side.

For enhanced maneuverability and docking support, capstans are conveniently

situated at the port and starboard stern, making yacht handling in various conditions both efficient and straightforward. The yacht also features a hydraulic passerelle on the aft port side, facilitating easy boarding and disembarking, which adds to the vessel's overall convenience and luxury.

Tender management is simplified with a 4000-pound hydraulic boom crane, ensuring the smooth and secure launch and retrieval of tenders. This well-rounded deck equipment configuration not only boosts the yacht's operational capabilities but also guarantees an exceptional experience for everyone on board.

Flybridge

The flybridge of this yacht is an expansive and meticulously crafted space, ideal for both leisure and socializing. At the front, a generous curved bench seat faces forward, perfect for relaxing, reading, or taking in the sweeping vistas. Underneath the brow, there are ample storage compartments, providing convenient places to tuck away essentials.

As you move towards the rear, the flybridge boasts a lavish Jacuzzi with built-in sun pads, creating an ideal spot for sunbathing or enjoying a refreshing soak. The design smartly includes storage beneath the sun pads, ensuring all necessities are easily accessible. A hard top partially covers this area, with an opening above the Jacuzzi, allowing you to choose between sun exposure or shade as you prefer.

Adjacent to the Jacuzzi, large cabinets are available for storing workout equipment, catering to fitness enthusiasts. Further back, an open area is ready for setting up sun loungers and tables. This space is enhanced by a full bar on the starboard side and a BBQ, making it perfect for gatherings and outdoor dining.

At the very end of the flybridge, a spacious lounge and dining area extends

onto a balcony, offering stunning views and a tranquil setting for meals or relaxation. This elegantly designed flybridge exemplifies the yacht's dedication to luxury and comfort, providing an outstanding venue for both unwinding and entertaining.

Generators

The yacht boasts a powerful and efficient energy generation system, featuring two top-tier Northern Lights generators. The primary unit is a 70 kW generator running at 1800 rpm, supplying 380 volts in a three-phase setup. This generator is engineered with a dual mount system for enhanced stability and reduced vibration, and it is encased in fiberglass sound shields to minimize noise. It also includes gas-water separators to boost operational efficiency and meet environmental standards.

Accompanying this is a second Northern Lights generator, offering 50 kW of power. Like the first, it is equipped with sound shields to ensure quiet operation, making it perfect for maintaining a tranquil atmosphere on board. Both generators are outfitted with Centek water wash and separator mufflers, which further enhance their quiet and efficient performance. This well-rounded generator configuration guarantees that the yacht enjoys a dependable and steady power supply, effortlessly supporting all onboard systems and amenities.

Safety and fire protection

The yacht features a cutting-edge central fire alarm system, guaranteeing top-tier safety for everyone on board. This all-encompassing system is equipped with strategically positioned heat and smoke detectors throughout all accommodation areas and the engine room, ensuring comprehensive coverage and early warning of any fire risks. The system is engineered to

promptly alert the crew, with monitoring panels installed in both the wheelhouse and the crew mess. These panels have individual lights that clearly pinpoint the location of any fire, enabling a quick and efficient response.

The fire and safety system is meticulously crafted to adhere to the rigorous standards set by the American Bureau of Shipping (ABS) and the Maritime and Coastguard Agency (MCA), ensuring alignment with international safety protocols. This dedication to safety and fire prevention highlights the yacht's commitment to offering a secure and stress-free environment for all guests and crew members.

Tenders

The yacht's boat deck, situated just behind the skylounge, is expertly crafted to house a variety of tenders and leisure equipment, significantly boosting the vessel's adaptability and allure. This generous space is meticulously arranged to accommodate both a 22-foot tender and a 15-foot tender, offering numerous possibilities for coastal exploration, visiting hidden beaches, or simply enjoying a relaxed cruise. Beyond these tenders, the deck is also designed to store additional water toys, ensuring guests have access to a broad spectrum of activities and entertainment options while aboard. This carefully considered layout not only optimizes space utilization but also guarantees that the yacht is perfectly outfitted for both adventure and relaxation.

Main engines/mechanical equipment

The engine room of this yacht exemplifies meticulous design and engineering, tailored to fulfill the needs of a global explorer yacht. It is spacious and efficiently organized, facilitating easy maintenance of all equipment. This configuration is crucial for a vessel operating in remote locations with limited

shore support. The seawater systems are cleverly designed, utilizing a primary sea chest system that includes two sea chests with a crossover pipe. All seawater piping is constructed from CuNi, and the chests can be cleaned while underway, featuring a blow-down system. Each chest is capable of meeting all raw water requirements.

At the core of the yacht's propulsion are two Caterpillar C32 engines, each producing 1100 horsepower at 2100 rpm, B-rated for reliability and performance. The exhaust system is fitted with a Centek water wash and separator system, ensuring efficient and eco-friendly operation. The reduction gears are Twin Disk MG 6598DC, or similar, featuring a power take-off system with an electric clutch to power the bow thruster, windlass, and crane. The yacht is equipped with a pair of bronze, 5-blade propellers, one right-handed and one left-handed, for optimal maneuverability.

Engine controls are provided by Kobelt, with stations located in the wheelhouse, wing stations, and aft deck, ensuring precise handling. The bow thruster is a 20-inch Quantum Hydraulics unit with 100 horsepower, enhancing docking and maneuvering capabilities. The yacht's climate is managed by an Aqua Air Alpha Series air conditioning system, complete with a fresh air makeup system. Additional drain pans have been installed under the main compressor system and each individual area handler, all draining to the gray water system.

Stability is maintained by Quantum Hydraulics Zero Speed stabilizers, providing comfort even when the yacht is stationary. The fuel oil system is managed by an Alfa Laval MIB 303 model, with Racor filters ensuring clean fuel delivery. Sight gauges and fuel tank level monitors are strategically placed for easy access and monitoring. A polished stainless steel retractable hose reel and PVC-coated filling line are conveniently located near the engine room entry door for tender refueling at the swim platform.

The yacht's fuel system is versatile, allowing fuel to be transferred from any

tank to any other tank via the main transfer system or through the Alfa Laval. A third backup DC system and an integrated main pump with the inverter system provide additional reliability. All major systems have backups, ensuring uninterrupted operation.

The shore power system is equipped with an Atlas conversion system, and water needs are met by two water makers, each producing 60 gallons per hour. The black water system features a Headhunter toilet system and a USCG Certified Type II Marine Sanitation Device, with a large diaphragm pump for waste transfer. The gray water system is interlinked as a backup.

The bilge system includes two large pumps, one engine-driven and one electric, connected to the bilge manifold. The fire pump is interlinked to back up the bilge pump, and there are seven submersible pumps, one in each compartment. A separate diesel-driven self-priming emergency fire and bilge pump is also installed, meeting MCA requirements. The engine room is equipped with a fixed CO2 fire fighting system and portable extinguishers throughout the vessel.

The fresh water system features two pumps feeding a common accumulator tank, with three hot water tanks and a direct deck pressure fitting. Two variable speed, reversible engine room fans ensure proper ventilation. This comprehensive array of mechanical equipment and systems ensures that the yacht is fully prepared for any adventure, providing reliability, safety, and comfort for all aboard.

Decks

The yacht's decks exemplify a perfect blend of elegance and practicality, showcasing exquisite teak surfaces meticulously bonded with epoxy glue or other premium adhesives. This not only guarantees a stunning appearance but also ensures enduring durability, capable of withstanding the challenges of the sea. The teak's warm, natural hues contribute a timeless and luxurious look,

enhancing the vessel's overall charm.

Beyond the teak decks, the work areas and flybridge feature painted surfaces, providing a practical and aesthetically pleasing contrast. This well-considered mix of materials and finishes ensures that the yacht's decks are not only visually captivating but also highly functional, offering a secure and comfortable setting for both relaxation and activity. Whether taking a leisurely walk or engaging in more vigorous activities, the yacht's decks are crafted to deliver the ideal balance of style and functionality.

Accommodations

The yacht's accommodations are a showcase of luxury and intelligent design, fully utilizing its broad 27.5-foot beam and full beam forward house layout to deliver remarkable space for its size. The master stateroom, an impressive 770 square feet, is situated just forward of midships on the main deck. It is adorned with large windows that bathe the area in natural light, creating a bright interior with breathtaking views. Upon entry, guests are greeted by a private office and library, complete with a desk, chairs, and comprehensive office equipment. Moving forward, a private study awaits, featuring a TV, settee, and wardrobe area. A discreet door from the crew passage allows for service to the master stateroom without disturbing guest areas.

The full beam bedroom area is a haven of relaxation, with expansive windows enhancing the sense of openness. To starboard, a settee invites relaxation, while to port, two chairs and a table create a cozy corner. The forward bulkhead houses an entertainment center, drawers, and storage, with additional storage lining both sides of the stateroom. Forward of the bedroom, his and her heads offer luxurious amenities, one with an extra-large shower and the other with a Jacuzzi tub. To port and aft of the main bedroom, her walk-in closet and dressing area feature full-length hanging lockers, a large chest of drawers, and a makeup area.

The main saloon, accessed from the aft deck, immediately impresses with its use of light from the windows to accentuate the American cherry joinery. An entertainment center separates the saloon from the dining area, creating distinct yet connected spaces. The large, fully equipped galley to starboard provides access to the comfortable crew area below and the wheelhouse above, with a side door for provisioning and crew movement to the deck.

The lower and upper guest areas are accessed from the main lobby, where a day head is conveniently located. The lower guest area features two queen staterooms aft, off a lobby equipped with a guest refrigerator and extra laundry facilities. Forward of the queen staterooms are two twin staterooms, with a fifth guest stateroom to starboard that can be used as a pilot, guide, nanny, gym, or additional cabin, offering flexibility for a total of five or six guest staterooms or extra crew accommodation.

A door across from the sixth cabin allows crew access to service the lower deck, with a large laundry directly opposite. Forward of the laundry is a crew mess area, and further forward are two comfortable double crew cabins with ensuite heads. An engineer's cabin is also located in the lazarette.

On the pilothouse deck, the upper lobby features a day head forward and a skylounge aft, offering extensive seating and an entertainment area. A separate pantry to starboard serves the skylounge and flybridge. Aft of the skylounge, on the forward part of the boat deck, is a covered seating area. The forward part of the upper lobby leads to the crew landing, with stairs from the galley. Off the landing is the double bed captain's cabin, and forward is a large wheelhouse with a raised settee, radio and navigation area, and a well-equipped bridge.

The exterior deck forward of the wheelhouse features a large lounge and sunning area, with extensive storage under the pads and seating. The foredeck includes crew seating areas, large bosun's lockers, extra-large chain lockers, and space to carry toys. The yacht's design ensures that the crew can work

efficiently without interacting with guests unless required, allowing them to move about the boat and provide full service without being intrusive.

Aft deck

The yacht's aft deck seamlessly combines practicality with sophistication, crafted to support both leisure and entertainment. It boasts a spacious table with seating for 10 to 12 guests, making it perfect for outdoor dining or social events. Enhancing this area is a fully equipped wet bar, ensuring drinks are always within reach, along with ample storage solutions to maintain a neat and organized environment.

The design thoughtfully incorporates access to the lazarette and engine room, with an entrance conveniently located on the starboard side. Additionally, elegant stairs on both the port and starboard sides lead down to a generously sized swim platform, offering easy access to the water for swimming or deploying water toys. The swim platform also includes a door to the lazarette, further enhancing the functionality and accessibility of the yacht's aft section. This meticulously designed aft deck provides a harmonious blend of luxury and utility, ensuring a memorable experience for all guests on board.

Audio and visual equipment

The yacht is meticulously crafted with a specific allocation for audio and visual equipment, ensuring that every entertainment requirement is met with elegance and ease. This setup allows for the installation of cutting-edge systems customized to the desires of the owner and guests, whether for captivating movie nights, high-quality music experiences, or seamless connectivity for presentations and events. The design's adaptability ensures that the latest technology can be incorporated, offering an outstanding audio-visual experience that enhances the yacht's luxurious atmosphere. This

careful consideration in planning for audio and visual equipment highlights the dedication to providing an exceptional onboard experience, catering to both leisure and entertainment.

Captain's cabin

The captain's cabin is a generously sized and elegantly furnished sanctuary, crafted to offer both comfort and practicality for the yacht's captain. It includes an ensuite bathroom, providing privacy and ease, and is equipped with a cozy double bed that ensures a restful night's sleep. A desk is provided, creating a dedicated area for work and navigation planning, while abundant storage options are seamlessly integrated throughout the cabin to keep personal items organized and within easy reach. Positioned strategically right behind the wheelhouse, the captain's cabin allows for swift and efficient access to the helm, ensuring the captain can quickly address any navigational requirements. This well-considered design highlights the yacht's dedication to offering a luxurious and functional living space for its crew.

Electronics and navigational equipment

The yacht is meticulously crafted with a dedicated space for electronics and navigational gear, ensuring it can be equipped with the latest advancements to meet the needs of contemporary maritime travel. This setup allows for the installation of cutting-edge systems customized to the specific requirements and preferences of the owner and crew. Whether it includes sophisticated radar systems, GPS, sonar, or communication devices, the yacht is ready to incorporate state-of-the-art technology that boosts safety, efficiency, and navigational ease. This adaptability ensures the vessel stays at the forefront of maritime innovation, offering a seamless and refined experience for everyone on board. The commitment to outfitting the yacht with premium electronics

and navigational tools highlights its preparedness for any journey, whether it's a leisurely cruise or an adventurous expedition.

Engineer's cabin

The engineer's cabin is strategically located aft of the engine room on the starboard side, providing easy access to the core of the yacht's mechanical systems. This cabin is carefully designed to offer both comfort and practicality for the engineering team. It includes an ensuite bathroom, ensuring privacy and convenience for its occupants. The cabin is furnished with two single beds, offering sufficient sleeping arrangements for the engineers. This configuration not only supports effective monitoring and maintenance of the yacht's systems but also guarantees that the engineers have a comfortable and private area to rest and rejuvenate. The placement and design of the engineer's cabin highlight the yacht's dedication to fostering a supportive and efficient working environment for its crew.

CONTACTS

Shestakov Yacht Sales is a brokerage company specializing in the sale and service of yachts worldwide. The company offers services for buying and selling both new and used motor yachts, sailing vessels, and luxury superyachts. They also provide yacht registration, insurance, technical maintenance, crew selection, and charter organization services across the U.S., Canada, Latin America, the Caribbean, and the Bahamas.

The founder and lead broker of the company is Andrey Shestakov, a licensed and certified expert with extensive experience in marine engineering and shipbuilding.

The company has an extensive network of partnerships with major yacht manufacturers worldwide and provides services in multiple languages, including Russian, Ukrainian, Spanish, and English. The office is in Dania Beach, Florida, USA.

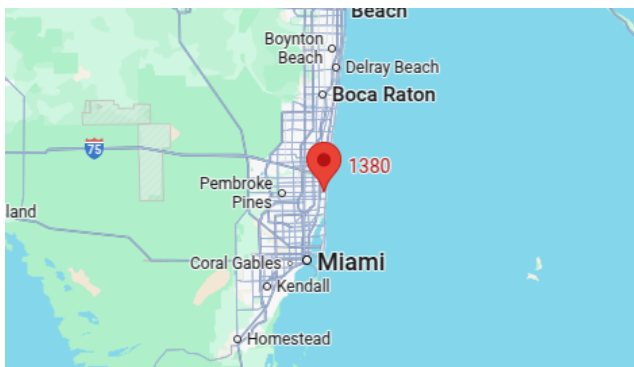
For more information and to view available yachts, you can visit the company's official website: <https://shestakovyachtsales.com>

Contact details

Phone: +1(954)274-4435

Email: andrey@shestakovyachtsales.com

Address



1380 Weeping Willow Way, Hollywood,
Florida 33019