

MISS STEPHANIE - RICHMOND YACHTS



Builder: [RICHMOND YACHTS](#)

LOA: 138' 0" (42.06 m)

Year Built: 2004

Beam: 27' 0" (8.51 m)

Model: N/A

Min Draft: 24' 11" (7.58 m)

Price: \$7,999,000 USD Subject to change.

Cruising Speed: 12.50 Knots (14.38 MPH)

[See full listing on our website](#)

Location: Fort Lauderdale, United States

Max Speed: 16.50 Knots (18.99 MPH)

TABLE OF CONTENTS

OVERVIEW	3
SPECIFICATIONS	4
Basic Information	4
Dimensions	4
Speed, Capacities and Weight	4
Accommodations	5
Hull and Deck Information	5
Engine Information	5
GALLERY	6
DETAILED DESCRIPTION	16
CONTACTS	25

OVERVIEW

MISS STEPHANIE, built by Richmond Yachts in 2004, presents an atmosphere of refined luxury, her interior artfully appointed by the Pavlik Design Team and her silhouette defined by the Setzer Design Group. Lovingly maintained by successive owners, she underwent major refits from 2018 through 2023 that leave her in pristine condition, including a new headliner, carpeting, furnishings, upgraded air conditioning units, two generators and a suite of mechanical enhancements that refresh both comfort and performance.

Her classic lines and sumptuous décor unfold across a generous layout that accommodates up to 12 guests in six well-proportioned staterooms, delivering a sense of scale and sophistication that rivals much larger yachts and has secured her status as one of the most sought-after charter choices on the market. A state-of-the-art stabilization system ensures serene passages at sea and stable comfort at anchor.

The main deck is reserved for a full-beam master suite appointed with a king-sized bed and his-and-hers ensuite, while the bridge deck hosts a VIP suite with a queen-sized bed and a spacious ensuite. Below deck are two guest staterooms, each with queen beds and private ensuites, accompanied by two twin cabins, all designed with generous closet space, thoughtful storage and integrated entertainment systems. Total accommodations comprise 1 king, 3 queens and 2 sets of twin beds, making MISS STEPHANIE an exceptional choice for buyers seeking a yacht in the current boat location. Explore yacht sales in the current boat location and discover the luxurious possibilities this vessel provides.

SPECIFICATIONS

Basic Information

Category:
Motor yachts

Year Built:
2004

Model Year:
2004

Country:
United States

Dimensions

LOA:
138' 0" (42.06 m)

Beam:
27' 0" (8.51 m)

Min Draft:
24' 11" (7.58 m)

Speed, Capacities and Weight

Cruise Speed:
12.50 Knots (14.38 MPH)

Water Capacity:
1800 Gallons

Max Speed:
16.50 Knots (18.99 MPH)

Fuel Capacity:
7526 Gallons

Gross Tonnage:
396 Pounds

Accommodations

Crew Berths:

4

Hull and Deck Information

Hull Material:

Fiberglass and Plastic Yachts

Hull Designer:

Richmond Yachts

Deck Material:

Fiberglass

Interior Designer:

Liz Dalton

Hull Configuration:

Semi-Displacement

Engine Information

Engines:

2

Engine Type:

Inboard

Manufacturer:

Caterpillar

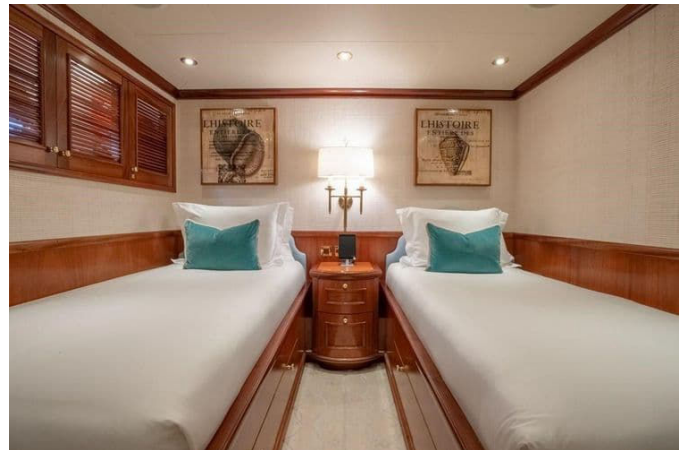
Fuel Type:

Diesel

GALLERY





















DETAILED DESCRIPTION

Machinery

The yacht is propelled by two robust CAT 3512B main engines, each producing an impressive 2250 horsepower (1680 kW), delivering the confidence and reserve expected of a vessel of this caliber; as of May 30, 2024 the starboard engine has recorded 5,471 hours since its rebuild and the port engine 2,961 hours, and together the engines show a combined total of 11,812 hours including rebuilt hours, all transmitted through reliable ZF BW755 transmissions for smooth, efficient operation, with precise engine handling provided by Prime Mover controls MPCD available at four stations. The propulsion train is completed by 5-inch Aquamet 22HS stainless steel shafts fitted with Tides Marine seals that were reconditioned and dynamically balanced in July 2023, and Osborne five-blade bronze propellers measuring 52 inches by 59 inches that were reconditioned and balanced at the same time to ensure optimal thrust and efficiency. Electrical generation is supplied by two Northern Lights MP668H generators, each rated at 99 kW and installed new in 2018; as of May 30, 2024 the port generator has accumulated 6,115 hours and the starboard generator 6,296 hours, providing dependable hotel power. Vessel motion and handling benefit from ABT Trac Zero Speed stabilizers overhauled in 2023 and a Jastram steering system also overhauled in 2023, while close-quarters maneuvering is aided by an American Bow thruster with 87 horsepower and hydraulic operation that was serviced in July 2023. Fuel conditioning is managed by an Alpha Laval MIB 303 fuel separator rebuilt in 2022, and fresh water independence is assured by two watermakers producing 5,500 and 1,900 gallons per day respectively, both rebuilt in 2022. Climate control is handled by a Marine Air Chiller air conditioning system fully replaced in 2018 and majorly serviced in 2022, shore power is integrated through an

Atlas 75kva 480VAC 50/60hz system which received total servicing and parts replacement in July 2023, and the Tidal Wave sewage treatment system was fully serviced in 2022; additionally Tides Marine Sure Seal shaft seals were installed new in 2023 and Cathelco cathodic protection was fitted with new rods in 2023, all combining to present a thoroughly maintained and dependable engineering package.

Communication, navigation & entertainment systems

The yacht is fitted with a comprehensive and modern communication, navigation and entertainment suite designed to provide seamless connectivity, safety and refined onboard enjoyment, with office functionality provided by an HP Officejet Pro 8600 printer scanner and satellite communications handled by Via Sat for voice and data, while bridge and deck communications are covered by Sailor RT4822 VHF DSC and Simrad HS90 VHF radios with four handheld units and crew coordination maintained via ICOM M85 radios; high-speed internet is supplied by a Starlink dual system installed in 2023 and the network backbone is supported by updated Kerio network control and a Netgear NG310 with twelve new WiFi access points installed throughout the vessel in 2022. Navigation equipment is state-of-the-art and was updated to include a Furuno 96-mile RCU014 radar, Furuno NavNet 3D BB radar and electronic chart system, a Simrad AP50 Gyro and autopilot integrated with a navigation computer running Noble Tech software, GPS by Furuno GP150 and updated Furuno GP33, depth sounding by the updated Furuno DFF1 BB Sounder, and Furuno FI Series instruments for wind, boat speed and depth updated in 2023; watchkeeping and tracking are supported by a Furuno BR510 BNWAS, a Furuno FA170 AIS installed in 2023 and a Furuno Stelite Compass SC702 for accurate heading. The entertainment package is luxurious and thoughtfully configured, combining a Seatel series 04 KuBand antenna for Europe and

Caribbean coverage with a KVH TracVision HD7 for USA HD TV, a Plex movie system boasting a library of 1,300 movies controlled via Control 4 iPad interfaces, and multiple receivers including ten US Direct TV HD receivers to ensure a wide array of viewing options; televisions are strategically placed for optimal guest enjoyment with a 42-inch Sony LED TV on the sundeck, a 65-inch LG TV in the skylounge, a 26-inch Samsung LED TV on the bridge deck aft, a 42-inch Samsung LCD TV in the master stateroom, 26-inch Samsung LED TVs in each of the five guest staterooms, a 42-inch Sony LED TV in the crew mess, a 32-inch Sony LED TV in the captain's cabin and 22-inch LG LCD TVs in each of the three crew cabins, delivering an integrated and high-quality audiovisual experience throughout the yacht.

Galley & laundry equipment

The yacht's galley and laundry installations have been specified and maintained to a high standard to support fine dining and efficient service, with the main galley fitted with a new Bosch five-burner cooktop and Bosch oven installed in November 2022, complemented by a Subzero double door refrigerator, a Subzero double drawer refrigerator and a Subzero double drawer freezer all serviced in November 2023, plus a microwave and a Kenmore dishwasher for day-to-day convenience. Laundry operations are handled by two updated Miele PW6065 washers and two Miele PT7136 dryers for reliable service, and the crew mess includes two updated Uline refrigerators and an updated LG microwave. Guest and service refrigeration was expanded with a True refrigerator and True icemaker installed in the skylounge in September 2022 and a new dual-temperature full-height wine fridge in the main foyer installed that same month, while the main salon also received a True refrigerator and True icemaker in September 2022 and the guest foyer features a Subzero double drawer refrigerator. Outdoor and service areas are well provisioned with an updated Nurxiovo icemaker on the

bridge aft, an updated Nurxiovo fridge and a Scotsman icemaker on the sundeck, and in the lazarette two Danvy standup freezers and a Vevor ice machine installed in September 2022 provide substantial storage and ice capacity; the master suite is fitted with a double Subzero refrigerator to ensure private convenience, creating a comprehensive culinary and laundry package that supports extended cruising and high standards of hospitality.

Tenders & toys

The yacht's recreational inventory has been arranged to maximize fun and versatility on the water, highlighted by four brand-new jet skis purchased in November 2022 that deliver exhilarating performance for guests, together with a fifteen-foot Gemini inflatable tender powered by a robust 115 Yamaha engine that provides reliable and efficient transport between yacht and shore or for short excursions, creating a well-rounded complement of tenders and toys that enhance both relaxation and adventure afloat.

Deck equipment

Deck systems aboard the yacht have been robustly maintained and upgraded to ensure safe and efficient handling, anchored by two Maxwell 6000 Series hydraulic windlasses and capstans that were rebuilt in July 2023 to deliver dependable anchoring capability, working with two 150 kg stockless galvanized anchors and two 5/8-inch by 500-foot ISO galvanized anchor chains, with the port chain newly replaced in July 2023 and the starboard chain replaced in prior years to maintain redundancy and security. Line handling is further enhanced by two Maxwell 3500 Series hydraulic capstans, also rebuilt in July 2023, and the hydraulic boat davits with a lifting capacity of up to 1000 kg were serviced in November 2023 to ensure safe launching and recovery of tenders and equipment. A Besenzoni P1390 hydraulic passerelle is installed to provide

convenient boarding once its power pack is fitted, and together this deck equipment configuration offers operational reliability and ease of use for a wide range of maritime activities.

Security, fire fighting & safety equipment

Safety systems aboard the yacht reflect rigorous attention to protection and preparedness, with an out-of-water inspection completed in July 2023 that underscores the vessel's maintenance regimen and a comprehensive CCTV security system with four cameras positioned to monitor key areas and three monitors located in the crew quarters, pilothouse and galley to provide continuous surveillance; fire protection is centered on a Fire Shield fire control system complemented by alarms to ensure prompt detection and response, and all life safety equipment is current and maintained to professional standards, delivering assurance that the yacht is prepared to protect guests and crew in a wide range of scenarios.

Accommodations

The yacht offers exceptionally appointed accommodations that blend refined comfort with thoughtful functionality, anchored by a full-beam master stateroom on the main deck forward that features a king-size bed, a writing desk, a settee, and dual his-and-her ensuite bathrooms and closets each equipped with a safe, along with a full AV system including satellite TV and access to the Plex Movie System for streaming entertainment. The VIP stateroom, located just aft of the bridge, provides panoramic views, a queen-size bed, an ensuite bathroom and a writing desk, and is similarly equipped with a comprehensive AV package. Four guest staterooms on the lower deck comprise two queen-bed cabins and two twin-bed cabins, each spacious with an ensuite bathroom and full AV with satellite TV and movie

access to ensure every guest enjoys privacy and entertainment. Crew accommodations are arranged for eight in four cabins, each fitted with TVs and movie access, while the captain's cabin includes satellite TV and the capability to display radar information on the television for operational oversight. The skylounge serves as an entertainment hub with surround sound, a PS-5 gaming console and access to the Plex Movie System, creating convivial spaces for relaxation and socializing and ensuring that every guest and crew member experiences comfort and luxury aboard.

Upgrades

This yacht has benefited from a continuous program of substantial upgrades and refits that have maintained and advanced her systems, comfort and value: in 2025 extensive maintenance included replacement of aged and rusted hydraulic hoses on a generator at a cost of \$6,380.20 and a comprehensive 6,000-hour main engine service priced at \$101,752.77, shipyard period works covering bottom paint and Propspeed application on propellers and bow thruster totaling \$86,011.02, a complete cleaning of greywater, blackwater and MSD systems for \$5,538, a full hydraulic overhaul of the bow anchor winch for \$7,400, steering system renewal including new hydraulic hoses, cylinders and an over-center valve for \$16,400 and correction of power synchronization issues for \$7,860. In 2024 the HVAC plant received a complete overhaul including descaling chillers, servicing air handlers, replacing ducting and mold remediation at a cost of \$55,173.23, the generator underwent an overhaul with extensive component replacement and system upgrades for \$47,222.04, the main engine battery was replaced for \$10,920 and additional works addressed PTO hose replacements, a rebuild of the port anchor winch, garage seal repairs, service to sundeck davits and the starboard generator injector, new salon furnishings including sofas, coffee tables and dining chairs, new True freezer and refrigerator drawers in the galley, exhaust leak repairs, installation

of auxiliary cooling pumps for the main engines and AC seawater pumps and full recertification of fire equipment. In 2023 new carpeting was installed throughout, salon and bridge deck electric sliding doors were rebuilt, bright work was re-varnished and a new transfer system installed, bottom paint refreshed and the port transmission rebuilt, main engine heat enhancers and after coolers cleaned, stabilizers serviced and both shafts straightened and resurfaced with new cutless bearings and reconditioned props plus engine alignment adjustments, a new eight-step gangway and chilled water pumps added and the entire interior recaulked. The 2022 program included the addition of four new jet skis, a rebuilt control room ceiling, reconstruction of all crew showers, rebuilding of the engineer's cabin, head and shower, complete overhauls of both watermakers, installation of a new headliner throughout, new TV and audio systems and a ceramic-coated wax treatment. In 2021 a new cathodic protection system was fitted along with new main engine and generator exhausts, all tanks were professionally cleaned and raw water systems serviced, the air system was flushed and new air compressors with auto drains and DC backup were installed, the lazarette was rebuilt, a new Atlas inverter was ordered, new engine room intake fans and dampers were added and the starboard main engine was overhauled at 6,341 hours. The 2020 scope included a rebuild of the port main engine at 8,951 hours, installation of new watermaker membranes, a new chiller plant and control system, new raw water pumps, a new generator power system, bottom job and PropSpeed application, replacement of the master carpet, new engine fuel heat exchangers, water pumps and fuel coolers, a new satellite dish (V11), and updated services for engines, transmissions and generators with the engine room fire system and panel replaced and all air handlers except the skylounge renewed. In 2019 a new exhaust clean system, watermaker system and custom beach club were added, motor mounts replaced and shafts serviced with props balanced and cutlass bearings replaced. The 2018 refit was extensive and included a rebuilt hardtop, major service on the starboard transmission,

new teak decking on the sundeck and rebuilt electrical panels, shaft servicing and props balanced to s-class, a new watermaker system, annual maintenance and surveys at a major shipyard, installation of three new ten-ton chillers and forty-three new air handlers with a new chilled-water circulation line for the AC, addition of two new 99 kW Northern Lights generators, comprehensive rewiring with new breaker panels, replacement of sundeck teak, overhaul of hydraulic systems including new PTOs, engine room repainting and lining, new hydraulics on the large forward Bosun's hatch, new shaft seals, re-covering of all exterior cushions and new spa controls. In 2015 routine but thorough maintenance and surveys at a shipyard included haul-out, bottom paint, Propspeed and zinc renewal, stabilizer removal and seal replacement with rams rebuilt, thruster seal changes, rudder removal for bearing and seal inspection with rams rebuilt, replacement of seawater inlet and overboard discharge valves, opening and cleaning of fuel and water tanks, an overhaul of the sewage treatment system, electrical mega tests on generators and pumps and completion of a five-year Hi-Fog factory service. The extensive 2014 refit in Fort Lauderdale encompassed a complete repaint from mast to waterline, reconfiguration of the sundeck with a new bar and larger table and removal of the helm station, replacement of old Corian counters with granite, conversion of exterior lighting to LED, a full interior redecoration with new fabrics, upholstery, wall coverings and furnishings, new ceilings and carpets, replacement of stone countertops with marble in guest areas, modification of the main salon bar, installation of hardwood flooring in the sky lounge, upgrade of interior lighting to the latest generation LEDs and extensive carpentry works. Entertainment systems were completely overhauled with new TVs and a Crestron/iPad control system, satellite TV systems upgraded and a 100-inch open-air movie projector installed on the sundeck, electronics upgraded with extensive rewiring, rearrangement of bridge equipment and the Nema network, new radar and depth sounder, a new Wi-Fi network and network control system plus replacement of all radio and cellular antennas. In

engineering the main engines received a top-end overhaul, transmissions were fully overhauled, generators were serviced, engine realignment performed, watermakers overhauled and new engine room and lazarette floor plates installed along with extensive engine room painting and detailing, all reflecting a long-term investment strategy that preserves performance, reliability and guest comfort.

Broker comments

Miss Stephanie, formerly known as Penny Mae and TCB, has been meticulously maintained and progressively upgraded by successive owners, with significant investments from 2018 through 2023 that have preserved her systems and elevated her guest amenities; this well-built six-stateroom vessel delivers interior volume and layout rarely found in yachts of comparable size, with a main saloon and sky lounge designed around large bars and generous seating for effortless entertainment, and expansive exterior areas on the bridge deck aft and sundeck ideal for dining and outdoor socializing, making Miss Stephanie exceptionally suited for private ownership or charter operations and offering an uncompromised yachting experience that blends space, comfort and capability—see the Upgrades section for a detailed record of improvements.

Exclusions

The sale excludes the owner's personal effects and possessions, and specifically does not include the 39-foot Yellowfin Tow Tender complete with its tow harness, enabling the buyer to understand which items remain with the seller while the vessel is otherwise transferred ready for personalized outfitting.

CONTACTS

Shestakov Yacht Sales is a brokerage company specializing in the sale and service of yachts worldwide. The company offers services for buying and selling both new and used motor yachts, sailing vessels, and luxury superyachts. They also provide yacht registration, insurance, technical maintenance, crew selection, and charter organization services across the U.S., Canada, Latin America, the Caribbean, and the Bahamas.

The founder and lead broker of the company is Andrey Shestakov, a licensed and certified expert with extensive experience in marine engineering and shipbuilding.

The company has an extensive network of partnerships with major yacht manufacturers worldwide and provides services in multiple languages, including Russian, Ukrainian, Spanish, and English. The office is in Dania Beach, Florida, USA.

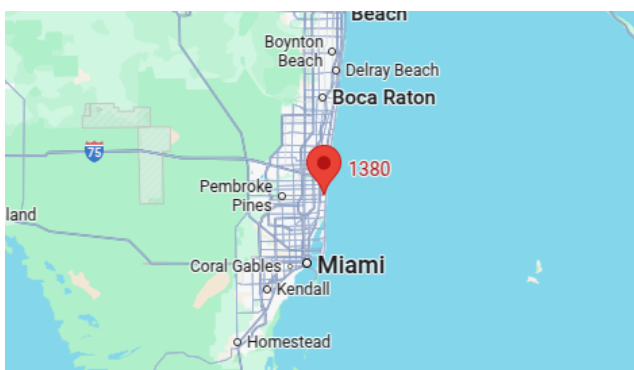
For more information and to view available yachts, you can visit the company's official website: <https://shestakovyachtsales.com>

Contact details

Phone: +1(954)274-4435

Email: andrey@shestakovyachtsales.com

Address



1380 Weeping Willow Way, Hollywood,
Florida 33019