

PERSHING 140 - PERSHING



Builder: [PERSHING](#)

LOA: 140' 0" (42.67 m)

Year Built: 2026

Beam: 28' 0" (8.56 m)

Model: 140

Max Draft: 22' 2" (6.75 m)

Price: - Subject to change.

Cruising Speed: 10 Knots (11.51 MPH)

[See full listing on our website](#)

Location: Fort Lauderdale, United States

Max Speed: 36 Knots (41.43 MPH)

TABLE OF CONTENTS

OVERVIEW 3

SPECIFICATIONS 5

 Basic Information 5

 Dimensions 5

 Speed, Capacities and Weight 5

 Accommodations 6

 Hull and Deck Information 6

 Engine Information 6

GALLERY 7

DETAILED DESCRIPTION 24

CONTACTS 25

OVERVIEW

The Pershing 140 stands as the marque's most exhilarating statement—140, the ultimate rush—and the pioneering all aluminium flagship of this performance motor yacht lineage. It debuts a suite of firsts for the brand: a raised pilothouse seamlessly linked to the sun deck, an expansive owner's domain positioned on the main deck, and a transformative beach area that unfolds completely on three sides to frame the sea. Every element is conceived to amplify the signature Pershing thrill in a true luxury superyacht built for speed, style, and sensation.

Its profile exudes the athletic poise of a sport yacht, drawn in taut, flowing lines that channel the brand's competitive spirit. Iconic side wings are sculpted into the superstructure at the head of the side decks, sharpening both stance and function. The bow's crisply modern geometry boosts aerodynamic efficiency, complemented by a flush mooring cover with an automatic lift-and-lower mechanism that preserves the yacht's uninterrupted, streamlined silhouette. The result is a fast-planing superyacht that looks as quick as it feels.

Power arrives via four MTU 16V 2000 M96L engines at 2,600 hp each, while waterjet propulsion delivers peerless responsiveness, low vibration, and refined performance at both cruising pace and full throttle. True to the Pershing DNA, cutting-edge domotics and onboard electronics harmonize high performance with effortless relaxation, and three Seakeeper 35 gyro stabilizers ensure outstanding comfort even at anchor. Precision, quiet power, and advanced control systems together elevate every mile into a composed, compelling experience.

Life on board is defined by three expansive decks and generous open-air lounges that make this megayacht an ideal platform for sophisticated cruising and entertaining. A revolutionary stern architecture anchors the social scene, crowned by an extensive beach club poised at the waterline for seamless

indoor outdoor living. To make the journey uniquely personal, finishes and furnishings are fully bespoke, allowing every detail—materials, textures, and tones—to reflect the owner’s individual style while preserving the yacht’s unmistakable Pershing allure.

SPECIFICATIONS

Basic Information

Model Year:
2026

Country:
United States

Year Built:
2026

Dimensions

LOA:
140' 0" (42.67 m)

Max Draft:
22' 2" (6.75 m)

Beam:
28' 0" (8.56 m)

Speed, Capacities and Weight

Cruise Speed:
10 Knots (11.51 MPH)

Water Capacity:
1057 Gallons

Max Speed:
36 Knots (41.43 MPH)

Fuel Capacity:
7925 Gallons

Accommodations

Sleeps:

7

Crew Cabin:

4

Total Heads:

7

Crew Berths:

5

Hull and Deck Information

Hull Material:

Fiberglass and Plastic Yachts

Hull Designer:

N/A

Deck Material:

Fiberglass

Interior Designer:

N/A

Hull Configuration:

N/A

Engine Information

Engines:

2

Engine Type:

Inboard

Manufacturer:

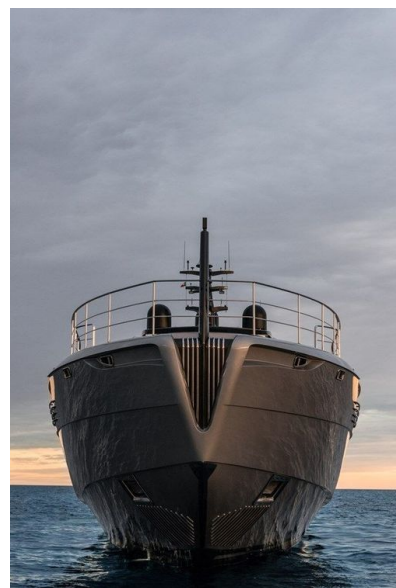
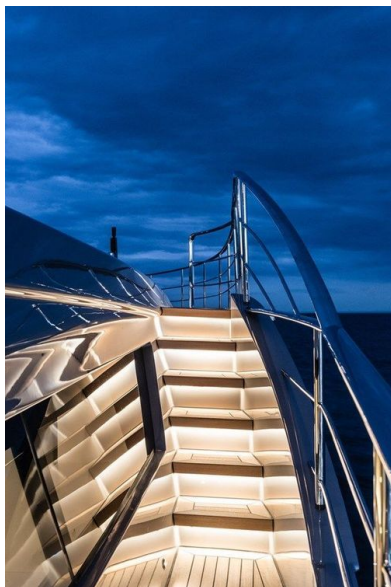
MTU

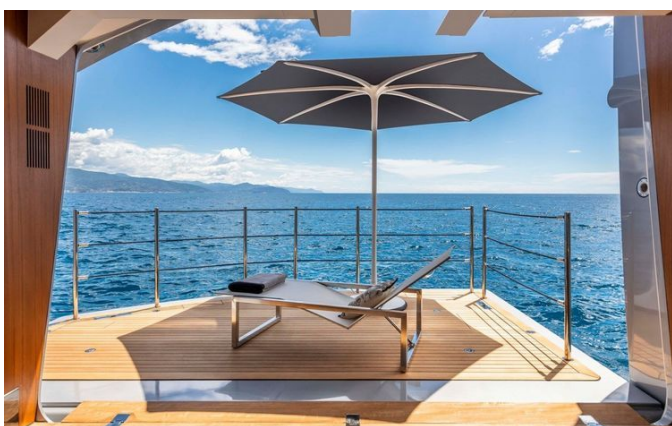
Fuel Type:

Diesel

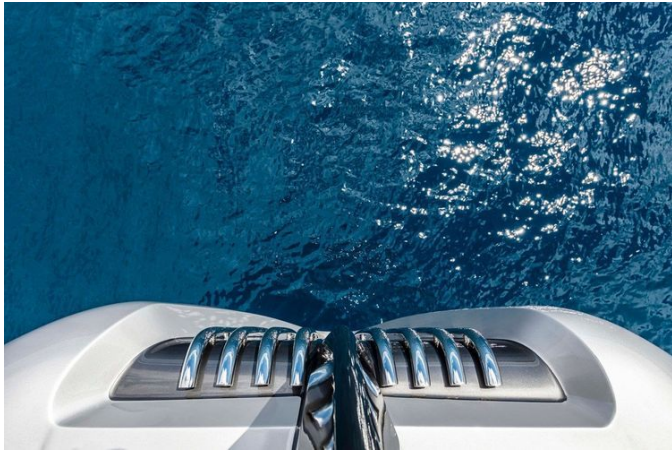
GALLERY





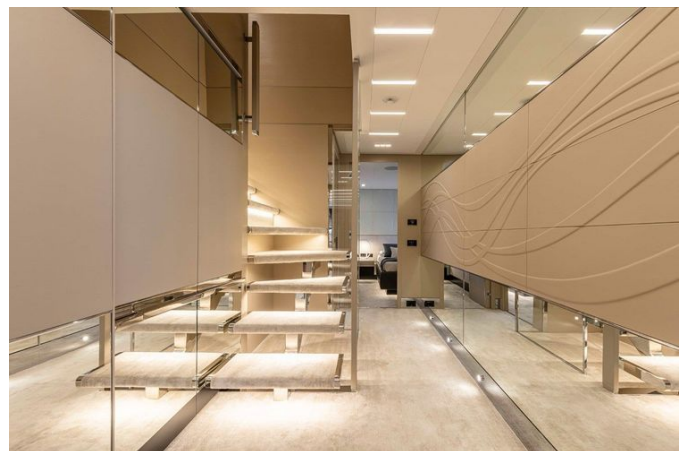
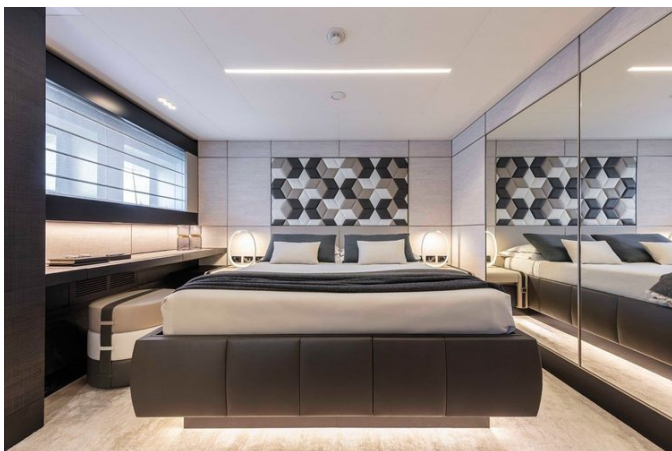




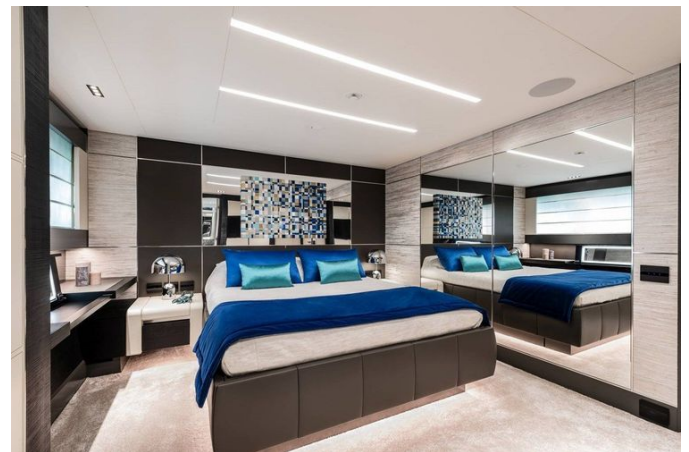


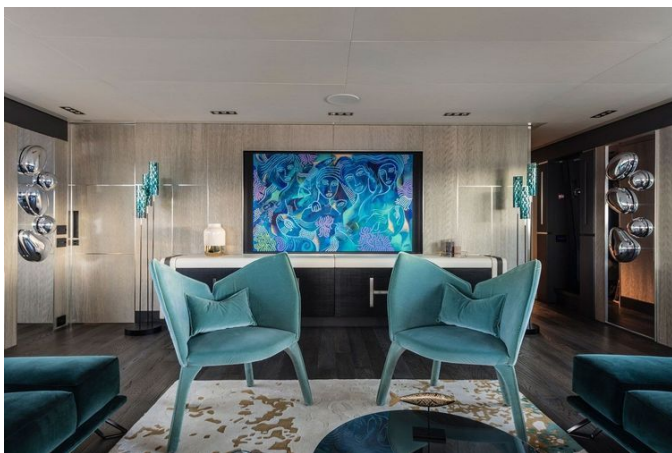








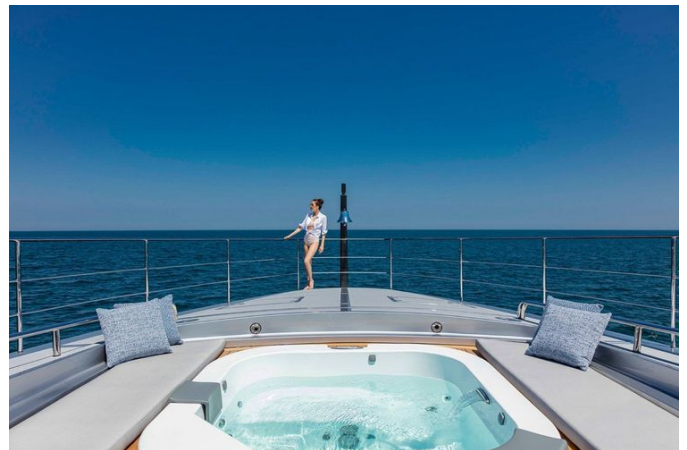
















DETAILED DESCRIPTION

Description

Pershing 140, the biggest thrill, is the ultimate expression of the Pershing experience. As Pershing's first all-aluminum superyacht, it pioneers a series of bold firsts: a raised helm station directly connected to the sun deck, an owner's area set on the main deck, and a transformative beach area that can open fully on three sides.

Its profile exudes the brand's sporting, competitive spirit, with sleek, aerodynamically honed lines punctuated by two side wings seamlessly integrated into the superstructure at the start of the walkways. The distinctly contemporary bow elevates performance and presence alike, its streamlined form preserved by a mooring cover with an automatic up/down mechanism that safeguards the yacht's pure, uninterrupted silhouette.

Power comes from four MTU 16 V 2000 M96L 2600 HP engines, paired with hydro-jet propulsion that delivers exceptional performance at both cruising and maximum speed. In keeping with Pershing DNA, the domotics and electronic systems are state-of-the-art, combining high performance with well-being and relaxation, while three Seakeeper 35s guarantee absolute comfort even while at anchor.

Life on board unfolds across three generous decks and expansive outdoor areas that heighten the sense of space and freedom. A revolutionary stern architecture centers the social experience, culminating in a large beach club right at the water's edge, whose beach area can open fully on three sides to immerse guests in the sea. Every decorative element is tailored to reflect the owner's style, delivering a personalized and unmistakably unique thrill.

CONTACTS

Shestakov Yacht Sales is a brokerage company specializing in the sale and service of yachts worldwide. The company offers services for buying and selling both new and used motor yachts, sailing vessels, and luxury superyachts. They also provide yacht registration, insurance, technical maintenance, crew selection, and charter organization services across the U.S., Canada, Latin America, the Caribbean, and the Bahamas.

The founder and lead broker of the company is Andrey Shestakov, a licensed and certified expert with extensive experience in marine engineering and shipbuilding.

The company has an extensive network of partnerships with major yacht manufacturers worldwide and provides services in multiple languages, including Russian, Ukrainian, Spanish, and English. The office is in Dania Beach, Florida, USA.

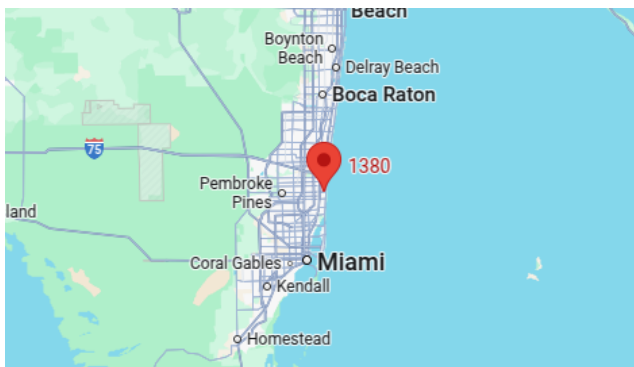
For more information and to view available yachts, you can visit the company's official website: <https://shestakovyachtsales.com>

Contact details

Phone: +1(954)274-4435

Email: andrey@shestakovyachtsales.com

Address



1380 Weeping Willow Way, Hollywood,
Florida 33019