



SHESTAKOV

Yacht Sales

THEOLINA - CODECASA



Builder: [Codecasa](#)

LOA: 141' 0" (43 m)

Year Built: 2007

Beam: 29' 0" (8.90 m)

Model: N/A

Max Draft: 9' 2" (2.80 m)

Price: \$13,337,199.18 USD Subject to change.

Cruising Speed: 14 Knots (16.11 MPH)

[See full listing on our website](#)

Location: Athens, Greece

Max Speed: 17 Knots (19.56 MPH)

If you would like to buy a yacht **THEOLINA - CODECASA** or would like help answering any questions concerning purchasing, selling, or chartering a yacht, please call **+1(954)274-4435** or click here on <https://shestakovyachtsales.com>

TABLE OF CONTENTS

OVERVIEW	3
SPECIFICATIONS	4
Basic Information	4
Dimensions	4
Speed, Capacities and Weight	4
Hull and Deck Information	5
Engine Information	5
GALLERY	6
DETAILED DESCRIPTION	11
CONTACTS	17

OVERVIEW

THEOLINA reflects classical Italian yachtmaking in a full displacement steel hull, artfully combining expansive living areas with genuine seagoing capability. Her scale is remarkable, offering interior volume more commonly found on 50m superyachts thanks to a tri deck steel hull and a generous 490 GT, yet she is presented in turnkey condition and represents a rare offering on today's market. Built by Codecasa and arranged with six beautifully appointed cabins, she is ready for immediate private cruising or to commence commercial charter operations. Meticulously maintained and regularly upgraded, she underwent a comprehensive interior refit in 2022, had new generators fitted in 2023, and her main engines have logged only 4,300 hours; Zero Speed stabilizers deliver whisper quiet comfort at anchor and underway. EU VAT has been paid and she is keenly positioned, making THEOLINA an exceptionally compelling, ready to go acquisition.

SPECIFICATIONS

Basic Information

Model Year:
2007

Country:
Greece

Year Built:
2007

Dimensions

LOA:
141' 0" (43 m)

Max Draft:
9' 2" (2.80 m)

Beam:
29' 0" (8.90 m)

Speed, Capacities and Weight

Cruise Speed:
14 Knots (16.11 MPH)

Water Capacity:
3170.06 Gallons

Max Speed:
17 Knots (19.56 MPH)

Fuel Capacity:
20605.42 Gallons

Gross Tonnage:
489 Pounds

Hull and Deck Information

Hull Material:

Steel Yachts

Hull Designer:

N/A

Deck Material:

Steel

Interior Designer:

Studio Della Rolla

Hull Configuration:

N/A

Engine Information

Engines:

2

Engine Type:

Inboard

Manufacturer:

Caterpillar

Fuel Type:

Diesel

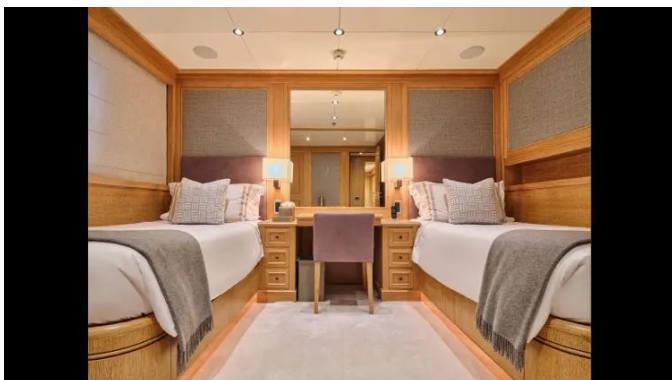
GALLERY











DETAILED DESCRIPTION

Accommodations

Meticulously arranged for luxurious cruising, she provides accommodation for up to twelve plus one guests across six finely appointed cabins. The owner benefits from a private full-beam stateroom, while visitors are hosted in two VIP cabins with double beds and two twin cabins fitted with Pullman berths. A professional crew of nine resides in five dedicated cabins, ensuring discreet and attentive service throughout every voyage.

Tender and toys

Guests aboard can indulge in a thoughtfully chosen array of tenders and toys, highlighted by a six-metre Jet Castoldi 21 tender alongside a 3.3-metre Aquapro tender driven by a 15 hp engine, a pairing designed to provide brisk transfers and effortless exploration between yacht and shore.

Audio/visual entertainment systems

The main salon is appointed with a 60-inch LG LED TV complemented by Marantz and Sonos components, all woven into the Crestron audio network and accessed effortlessly via iPad. In the master cabin a 42-inch LG LED TV is paired with a Crestron sound system and Apple TV, with an iPad for seamless control, while the VIP cabin offers the same experience with a 22-inch LG LED TV, Crestron sound, Apple TV and an iPad. Each guest stateroom is similarly equipped with a 22-inch LG LED TV, Crestron audio, Apple TV and an iPad, and the crew area features a 32-inch LG TV alongside a dedicated Hi-Fi system. iPads running Crestron automation are distributed throughout the yacht to provide unified, intuitive operation of the entire audio/visual package.

Machinery

Beneath her decks the yacht is propelled by twin Caterpillar 3512B main engines, each rated at 1,950 hp at 1,935 rpm, and as of May 2026 both the port and starboard engines record 4,300 hours. Cruising at an economical 13.5 knots delivers a range of 3,000 nautical miles, while precise handling is assured by an Opem Sistemi steering system paired with an Opem Sistemi rudder angle indicator and robust Reintjes gearboxes completing the propulsion arrangement.

Generators & auxiliary equipment

Onboard electrical power is supplied by a pair of Caterpillar C 4.4 generators, each delivering 99 kW to support every onboard system with reliable, efficient performance. As of May 2026 the port unit shows 2,860 hours and the starboard unit 2,800 hours, a closely matched service history that reflects careful, balanced use. For assured redundancy a dedicated emergency Caterpillar C 4.4 generator rated at 51 kW is installed and ready to take over instantly should it be required.

Power distribution and source switching are managed by an ATLAS frequency converter alongside the ATLAS main power system, providing smooth transitions and precise control, while dockside connection is facilitated by a shore cable rated at 380 V, three-phase, 50 Hz. Interior lighting operates on 24 V AC, with separate emergency lighting fitted for added security. Electrical reserves are organized with distinct service, engine and radio battery banks, and charging duties are handled by three independent chargers—one for the service circuit, one for the main engines and one for the radio—each configured to maintain critical batteries at optimal readiness.

Ancillary equipment

A commanding 75 kW bow thruster and Quantum Zero Speed stabilizers ensure precise handling and a tranquil onboard experience at anchor. Freshwater autonomy is secured by two Tecnicomar C 3/40 watermakers producing 360 l/h, complemented by a Gianneschi water pressure system and two ACV water boilers, while Condaria air conditioning provides refined climate control throughout. Engine-room ventilation is supplied by CTI Ventilatori, and the compressed air system is served by two Bristol units. Fuel systems meet professional standards with an Alfa Laval fuel separator, Racor fuel filters and two fuel transfer pumps, together with a dedicated tender refueling arrangement. Waste and environmental protection are addressed by DVZ 250 FSU Oilchief oil/water separators, Hamann sewage treatment and a Jets WC system, with antifoul protection sustained by a Cathelco cathodic protection system.

Safety and security equipment

Onboard, uncompromising safety measures have been integrated: the yacht carries four life rafts, each certified for ten persons, and fire protection is entrusted to the Autronica Aultro Safe/Semco Watermist system, engineered to deliver rapid and effective suppression. Personal valuables are secured with a safe in every guest cabin, complemented by a dedicated safe in the captain's cabin to ensure discreet, reliable storage.

Communication equipment

Communications aboard have been curated for absolute clarity and reach, with a suite of systems that blend professional capability and dependable performance. Twin Sailor VHF systems — the RT5022 and the C4900 — preside

over the bridge, supported by an A2E NAVY 06 VHF handheld and eight MIDLAND G15 UHF portable handsets to guarantee precise coordination both on deck and ashore. For true long-range connectivity the Sailor HC 4500B SSB is fitted, while Starlink satellite communications provide reliable broadband well beyond coastal waters. Internal voice and shipboard messaging are handled by a Panasonic telephone system and a Furuno intercom, with a Telular cellular phone system offering adaptable shoreside access. The digital backbone is a Unifi LAN network, with Wi-Fi coverage delivered by a Unifi Pepwave MAX BRI, and safety and distress signaling are secured by a McMurdo G5 plus GPS EPIRB together with two Sailor SART II transponders.

Navigation equipment

Take the helm with absolute assurance, supported by both a Furuno S-band radar and a Furuno X-band radar and complemented by a SIMRAD EQ33 echosounder that delivers precise depth information. Position fixing is handled by two Furuno GPS units, the GP170 and GP39, while navigational displays are presented on a pair of TZ plotters and vessel traffic is monitored via an EM-Trak A200 AIS. Sailing and performance data come from B&G Hydra2000 wind instruments alongside a B&G Hydra2000 speed/log, with course stability ensured by the Sperry NAVIGAT X MK 2 gyrocompass and automatic steering provided by the Sperry Navipilot V autopilot. A Plath magnetic compass remains available for traditional reference, and important maritime broadcasts are received through the Furuno NX 700 Navtex.

Deck equipment

The deck has been specified for confident, effortless operation, beginning with a pair of 240 kg HHP – FB – SCH 619 anchors, each secured by its own chain measuring 160 m in length with 17.5 mm links to ensure steadfast holding in

all conditions. Line handling is executed with precision by twin Semlec aft deck capstans, while tender duties are expertly supported by Opacmare FND tender davits rated at 800 kg, augmented by a Sanguinetti boat crane and additional davits. Refinement and functionality are combined in a Sanguinetti passerelle and an elegantly integrated folding side-boarding ladder, and night passages and close-quarters maneuvering benefit from the strong, focused illumination of an ITT Jabsco searchlight.

Office equipment

Aboard, the office is fitted with a Dell workstation and an HP printer, offering reliable support for communications, itinerary planning and document handling — whether at anchor or underway, this elegant workspace preserves connectivity and organisation with discreet, uncompromising efficiency.

Galley and domestic equipment

The main galley has been specified for professional service, furnished with three Miele ranges and two ovens—one Miele 90 cm and one TEKA—together with a dedicated Miele fryer to ensure exacting culinary results. Cold storage is provided by two Miele refrigerators, while washing and waste management are handled by a Vergina 50 Alfa dishwasher and a General Electric trash compactor, and a discreet dumbwaiter facilitates efficient service between decks. Supplementing the principal workspace, the yacht also carries a Miele Professional dishwasher, an additional Miele refrigerator, a Vitrifrigo refrigerator and two Dometic freezers located on the sundeck to expand storage and service capacity.

In the crew galley and mess, a Hyundai refrigerator keeps provisions in optimal condition and a Hoshizaki ice maker guarantees a steady supply of ice.

Onboard care is completed by a dedicated laundry area equipped with two

Miele washing machines and two Miele dryers to maintain impeccable linens and uniforms.

Refit summary

In 2026 the yacht's void tanks, formerly used as ballast tanks, were carefully repainted and the bridge floor received a fresh finish, restoring a crisp, shipshape appearance. In 2024 the stabilizers underwent a full overhaul, two new wine refrigerators were installed, and a robust network was deployed using Unify hardware, fully integrated with Sonos and Apple TV throughout the vessel to elevate onboard entertainment and connectivity; that year also saw a full classification renewal to reinforce the yacht's certificatory standing. Between 2021 and 2023 the yacht benefited from an extensive interior and exterior transformation: the sundeck sunbathing area was renewed with a new teak deck and a comfortable sofa while a reworked sundeck layout introduced a dedicated bar for effortless alfresco entertaining. A substantial interior refit introduced new flooring in the main salon, dining area and stairways, refreshed the salon furniture with a new sofa and table, and reconfigured the main salon to include a new bar and an additional sofa at the entrance, completed by a new sliding door at the salon entry. All cabins were rejuvenated with new fabrics and carpeting to enhance comfort and style. Technical upgrades included replacement of bridge equipment, installation of new generators (Caterpillar C4.4 99kw), a full monitoring system renewal, new navigation PCs and AIS. Additional enhancements across the refit program saw further wine refrigerators fitted, a second tender positioned forward and a second berth added to the engineer's cabin to improve operational flexibility.

CONTACTS

Shestakov Yacht Sales is a brokerage company specializing in the sale and service of yachts worldwide. The company offers services for buying and selling both new and used motor yachts, sailing vessels, and luxury superyachts. They also provide yacht registration, insurance, technical maintenance, crew selection, and charter organization services across the U.S., Canada, Latin America, the Caribbean, and the Bahamas.

The founder and lead broker of the company is Andrey Shestakov, a licensed and certified expert with extensive experience in marine engineering and shipbuilding.

The company has an extensive network of partnerships with major yacht manufacturers worldwide and provides services in multiple languages, including Russian, Ukrainian, Spanish, and English. The office is in Dania Beach, Florida, USA.

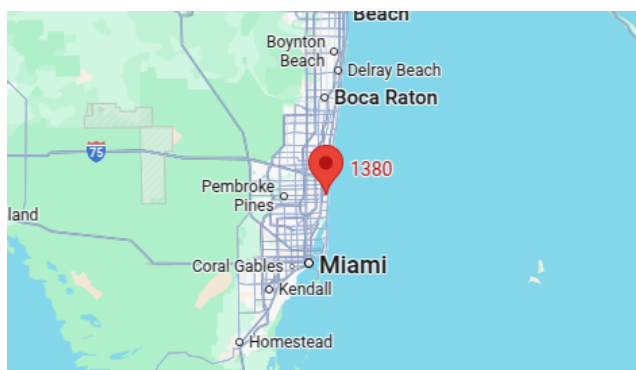
For more information and to view available yachts, you can visit the company's official website: <https://shestakovyachtsales.com>

Contact details

Phone: +1(954)274-4435

Email: andrey@shestakovyachtsales.com

Address



1380 Weeping Willow Way, Hollywood,
Florida 33019