

SUNRISE - YILDIZ SHIPYARD



Builder: [YILDIZ SHIPYARD](#)

LOA: 141' 0" (43 m)

Year Built: 2019

Beam: 28' 0" (8.76 m)

Model: C101

Min Draft: 8' 8" (2.64 m)

Price: \$19,865,525.67 USD Subject to change.

Max Draft: 8' 8" (2.64 m)

[See full listing on our website](#)

Location: Imperia, Italy

Cruising Speed: 10.50 Knots (12.08 MPH)

Max Speed: 14.50 Knots (16.69 MPH)

TABLE OF CONTENTS

OVERVIEW	3
SPECIFICATIONS	4
Basic Information	4
Dimensions	4
Speed, Capacities and Weight	4
Accommodations	5
Hull and Deck Information	5
Engine Information	5
GALLERY	6
DETAILED DESCRIPTION	14
CONTACTS	17

OVERVIEW

M/Y SUNRISE is a 141ft (43m) luxury motor yacht launched by Yildiz Shipyard (Perini Navi subsidiary shipyard) in Turkey, with a steel hull, aluminium superstructure and displacement build, conceived with a focus on volume, privacy and charter-ready practicality. Completed in 2019 and handed over in 2020, she marries exterior styling by Ginton Naval Architects with a Hot Lab interior defined by warm timbers, contemporary detailing and natural light, all fabricated and fitted by Ulutas Yacht Interior, a specialist outfitter.

Conceived for both private use and seasoned owners, SUNRISE presents a clever tri-deck guest arrangement, highlighted by a rare private elevator linking every interior deck. This not only enhances everyday circulation aboard but also renders the superyacht wheelchair accessible, an amenity still unusual in this size range. Maintained in superb condition, she has completed her 5-year Special Survey with RINA Class, underscoring her readiness for immediate long-range blue-water cruising worldwide.

SPECIFICATIONS

Basic Information

Model Year:
2019

Country:
Italy

Year Built:
2019

Dimensions

LOA:
141' 0" (43 m)

Beam:
28' 0" (8.76 m)

Min Draft:
8' 8" (2.64 m)

Max Draft:
8' 8" (2.64 m)

Speed, Capacities and Weight

Cruise Speed:
10.50 Knots (12.08 MPH)

Water Capacity:
1738.25 Gallons

Max Speed:
14.50 Knots (16.69 MPH)

Fuel Capacity:
10698.97 Gallons

Gross Tonnage:
419 Pounds

Accommodations

Sleeps:

9

Crew Cabin:

5

Total Heads:

7

Crew Berths:

8

Hull and Deck Information

Hull Material:

Steel Yachts

Hull Designer:

Ginton

Deck Material:

Steel

Interior Designer:

Hotlab

Hull Configuration:

Monohull

Engine Information

Engines:

2

Fuel Type:

Diesel

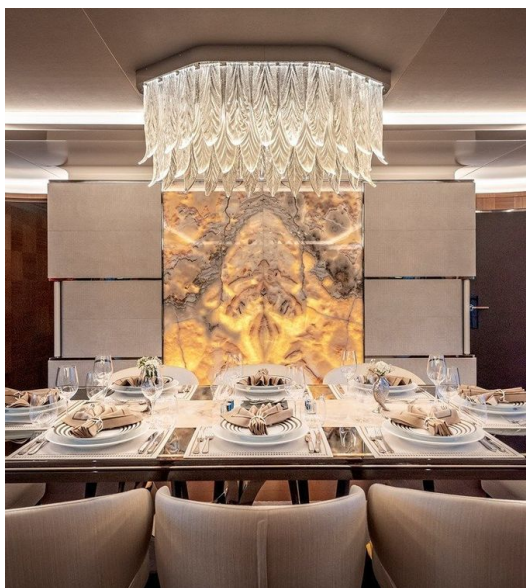
Manufacturer:

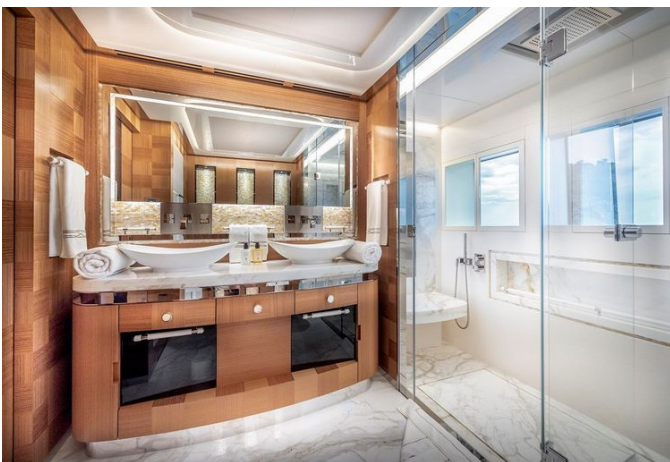
MTU

GALLERY

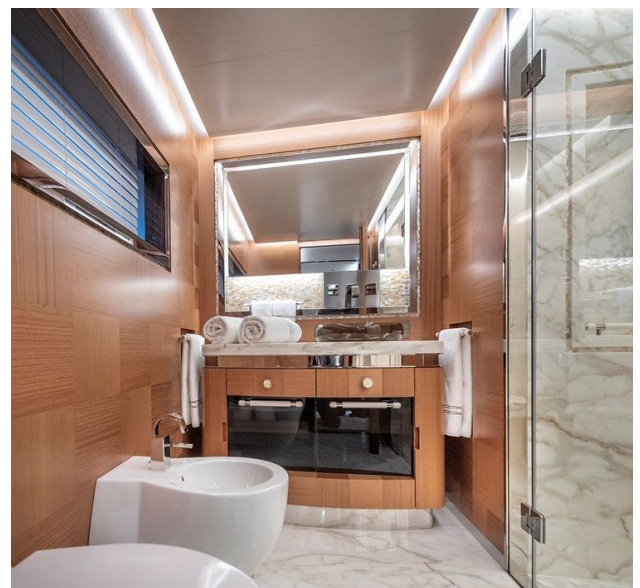
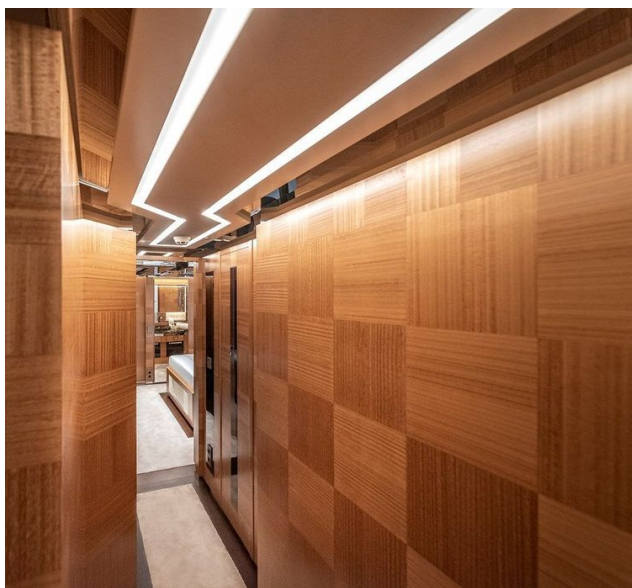


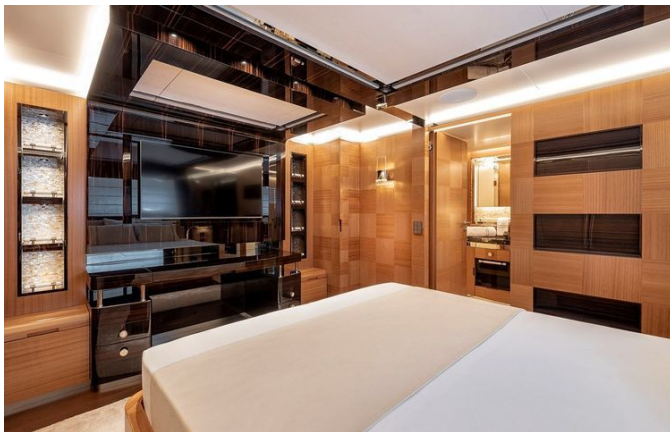














DETAILED DESCRIPTION

Detailed description

M/Y Sunrise is a 43 metres / 141 feet steel and aluminium luxury motor yacht built in Turkey by the renowned Yildiz Shipyard in 2019 and delivered in 2020. She marries refined European design with robust displacement construction, presenting elegant exterior lines by Ginton Naval Architects and a sophisticated interior by Hot Lab, where warm woods, contemporary detailing, and generous natural light create a serene ambiance. All interior elements were manufactured and installed by the esteemed Ulutas Yacht Interior. Conceived for both private ownership and high-end charter, Sunrise boasts exceptional volume for her size, an intelligent layout across three guest decks, and the rare convenience of a private elevator that connects all interior levels from the lower deck to the sky deck, ensuring wheelchair-friendly access throughout.

Accommodating up to twelve guests in five well-appointed, en-suite cabins, Sunrise offers a layout that excels for families and mixed groups alike. The full-beam Owner's Suite crowns the upper deck to deliver a level of privacy and prestige seldom found at this size, with a king-size bed oriented to panoramic views, expansive hull-side windows that bathe the space in natural light, a private lounge, abundant wardrobe and storage, and a luxurious en-suite bathroom with premium fittings. Direct access to a private aft deck terrace completes this sanctuary, ideal for quiet mornings or sunset retreats. On the lower deck aft, two spacious VIP double cabins echo the elegance of master-level accommodation, each with a comfortable double bed, an en-suite bathroom with shower, large hull windows, refined finishes in harmony with the yacht's interior theme, and integrated entertainment systems with climate control, making them perfect for couples or principal guests. Forward on the

lower deck, and accessible by elevator, two twin guest cabins are designed for flexibility, each offering two single beds and an additional Pullman berth to host up to three guests per cabin, together with en-suite bathrooms, generous storage and hanging space, and individual entertainment and climate control—an arrangement particularly well suited to families and adaptable group configurations. Crew accommodation is arranged separately, and circulation has been meticulously planned to ensure discreet, efficient service. The main deck is devoted to convivial living and effortless entertaining. A spacious saloon with comfortable lounge seating and large windows establishes an inviting atmosphere, while a formal indoor dining area seats up to twelve guests with ease. Interior and exterior spaces flow seamlessly, granting direct access to the aft deck for shaded alfresco dining, and a professionally equipped galley located forward supports smooth, unobtrusive service. Beyond, the exterior decks provide a range of open-air environments for every mood and moment. The expansive sky deck serves as a panoramic haven with sun loungers, a bar, a dining area, and shaded seating, complemented by additional sunbathing and seating on the foredeck. The upper deck aft remains a private enclave for the Owner's Suite, while the main deck aft forms a generous lounge and dining terrace. At the water's edge, the beach club and swim platform deliver easy access to the sea and water toys, enhanced by a massive Opacmare six-step transformer swim platform that elevates the on-the-water experience.

Sunrise is renowned for being a very silent yacht, offering comfortable and luxurious accommodation for ten to twelve guests and benefitting from stabilizers at anchor and underway for superior comfort in all conditions. Awards and recognition underscore her pedigree, including being a finalist at the Showboats Design Awards 2016 in the Naval Architecture Award for Semi-displacement Yachts, and a World Superyachts Awards finalist in the Displacement Motor Yacht below 500 GT, forty metres and above category. Built by Yildiz Shipyard, a Perini Navi subsidiary, she pairs an elegant and

stylish interior with beautiful furnishings by Ulutas Interiors, and her private elevator—from the lower deck to the sky deck—further enhances her wheelchair-friendly design. Completing her impeccable credentials, her five-year Special Survey was completed by RINA Class on 18 April 2025.

CONTACTS

Shestakov Yacht Sales is a brokerage company specializing in the sale and service of yachts worldwide. The company offers services for buying and selling both new and used motor yachts, sailing vessels, and luxury superyachts. They also provide yacht registration, insurance, technical maintenance, crew selection, and charter organization services across the U.S., Canada, Latin America, the Caribbean, and the Bahamas.

The founder and lead broker of the company is Andrey Shestakov, a licensed and certified expert with extensive experience in marine engineering and shipbuilding.

The company has an extensive network of partnerships with major yacht manufacturers worldwide and provides services in multiple languages, including Russian, Ukrainian, Spanish, and English. The office is in Dania Beach, Florida, USA.

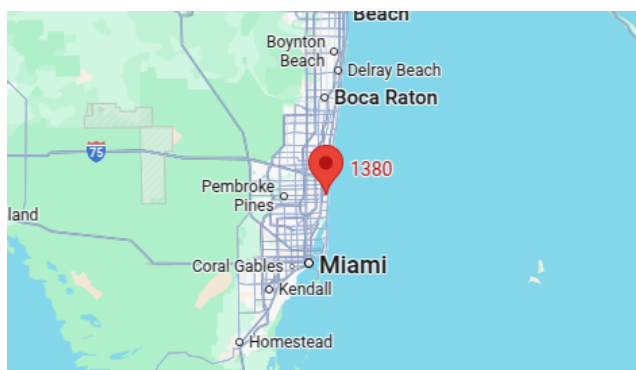
For more information and to view available yachts, you can visit the company's official website: <https://shestakovyachtsales.com>

Contact details

Phone: +1(954)274-4435

Email: andrey@shestakovyachtsales.com

Address



1380 Weeping Willow Way, Hollywood,
Florida 33019