

## THIS IS IT - TECNOMAR



**Builder:** [TECNOMAR](#)

**LOA:** 142' 0" (43.50 m)

**Year Built:** 2024

**Beam:** 47' 0" (14.50 m)

**Model:** N/A

**Max Draft:** 7' 3" (2.22 m)

**Price:** \$54,071,845.02 USD Subject to change.

**Cruising Speed:** 15 Knots (17.26 MPH)

[See full listing on our website](#)

**Location:** San Remo, Italy

**Max Speed:** 17 Knots (19.56 MPH)

---

# TABLE OF CONTENTS

---

**OVERVIEW ..... 3**

**SPECIFICATIONS ..... 5**

    Basic Information ..... 5

    Dimensions ..... 5

    Speed, Capacities and Weight ..... 6

    Hull and Deck Information ..... 6

    Engine Information ..... 6

**GALLERY ..... 7**

**DETAILED DESCRIPTION ..... 17**

**CONTACTS ..... 24**

## OVERVIEW

---

Defying convention at every turn, THIS IS IT emerges not merely as a yacht but as a deliberate work of art conceived to provoke awe. Born of advanced engineering and contemporary architectural thought, she redefines what life afloat can be. Her silhouette is sensuous and organic, a sculpted presence that moves like a living thing, where every contour and plane challenges classic yacht stereotyping to reveal a superyacht whose multihull identity is at once bold and refined. As a luxury motor catamaran she asserts a lineage of purpose and an aesthetic of daring elegance.

Recognized by Robb Report as Best of the Best 2024, THIS IS IT commands attention with an expansive beam of 14.50 m (47'6") and an imposing internal volume of 758 GT. Conceived as a "villa on the sea," she offers proportions more akin to a seaside residence than a conventional vessel, delivering a sense of calm and generous scale on her own terms. Broad terraces and sweeping decks dissolve into light-filled interiors, producing a seamless indoor-outdoor choreography where each instant feels leisurely, connected, and exquisitely composed—ideal for discerning charter guests and private owners seeking understated luxury.

Her interior grandeur is matched by thoughtful spatial design: the Owner's suite soars with a headroom of 3.3 m (11 ft), while a sumptuous spa area, complete with a dedicated treatment room and sauna, invites restorative indulgence. Accommodation comprises five plus one cabins, each appointed with en suite bathrooms to ensure privacy and comfort for family and guests. A generous swimming pool provides the setting for sun-drenched relaxation, and a proven charter platform underlines the yacht's reliability, operational versatility, and straightforward handling. By marrying avant garde exterior language with abundant volume and resort-style amenities, THIS IS IT elevates contemporary multihull yachting, reaffirming her status as an iconic charter

yacht crafted for pure, unfiltered pleasure at sea.

# SPECIFICATIONS

---

## Basic Information

---

**Category:**  
Motor yachts

**Year Built:**  
2024

**Sub category:**  
Catamaran

**Country:**  
Italy

**Model Year:**  
2024

## Dimensions

---

**LOA:**  
142' 0" (43.50 m)

**Max Draft:**  
7' 3" (2.22 m)

**Beam:**  
47' 0" (14.50 m)

## Speed, Capacities and Weight

---

**Cruise Speed:**

15 Knots (17.26 MPH)

**Water Capacity:**

5151.35 Gallons

**Max Speed:**

17 Knots (19.56 MPH)

**Fuel Capacity:**

14159.62 Gallons

**Gross Tonnage:**

750 Pounds

## Hull and Deck Information

---

**Hull Material:**

Aluminum Yachts

**Hull Designer:**

The Italian Sea Group

**Deck Material:**

Aluminum

**Interior Designer:**

Centro Stile The Italian Sea Group

**Hull Configuration:**

Catamaran

## Engine Information

---

**Engines:**

2

**Engine Type:**

Inboard

**Manufacturer:**

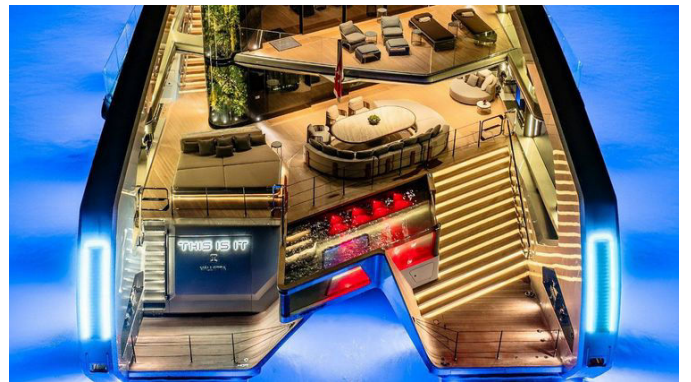
MTU

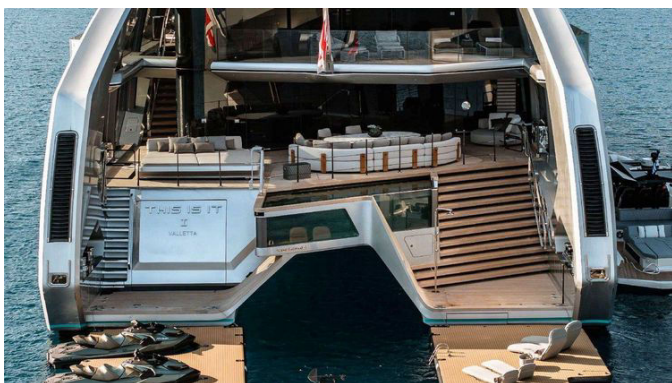
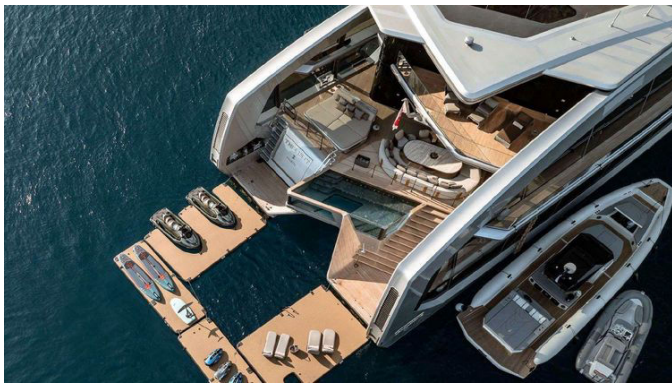
**Fuel Type:**

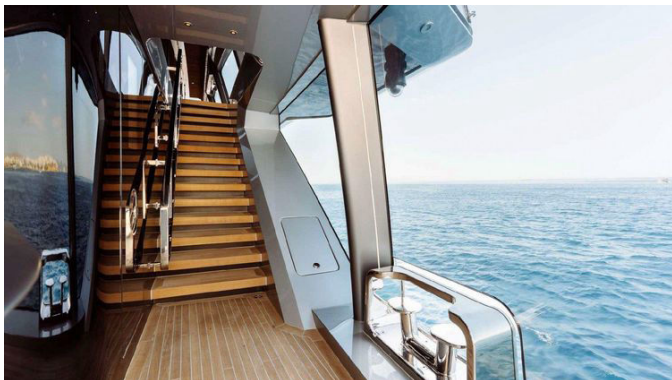
Diesel

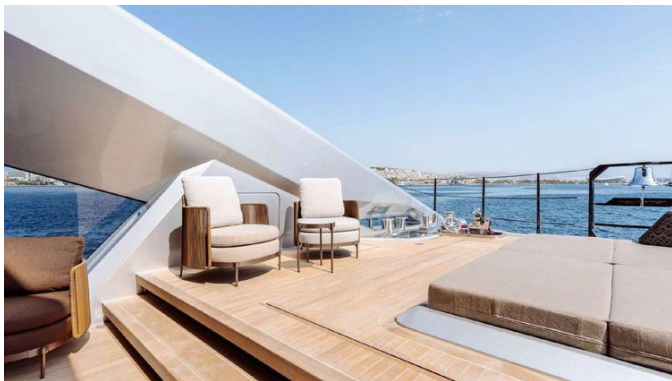
# GALLERY

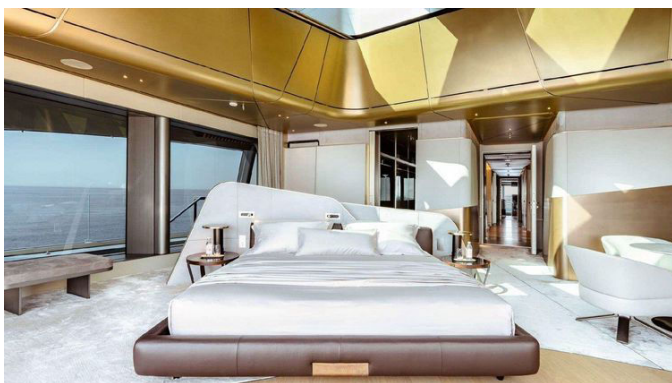


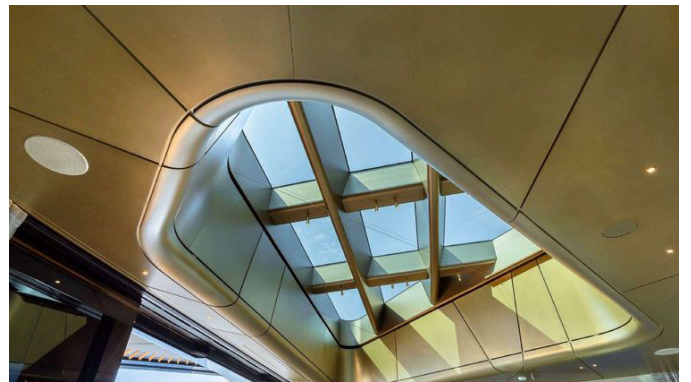
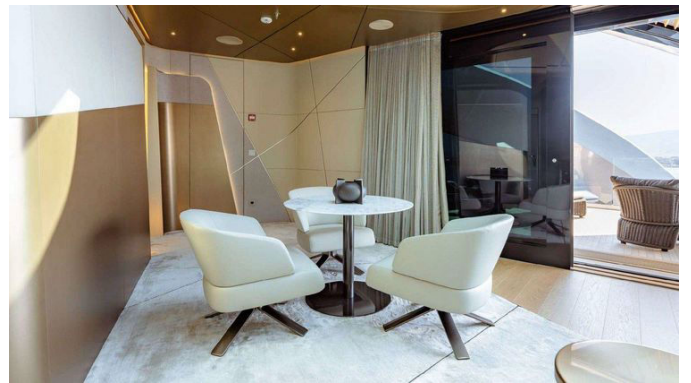


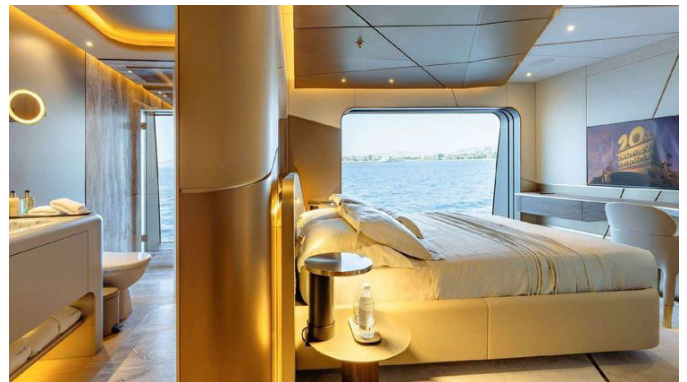
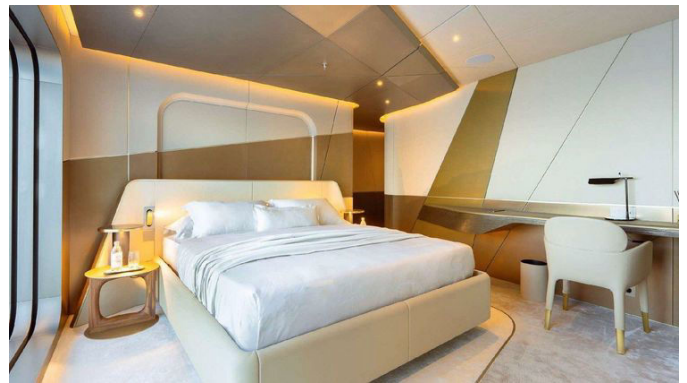
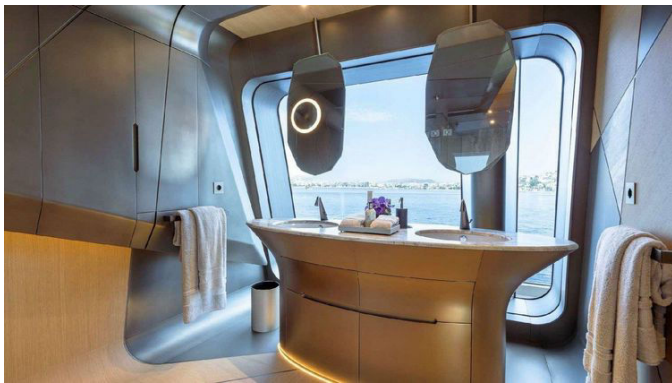


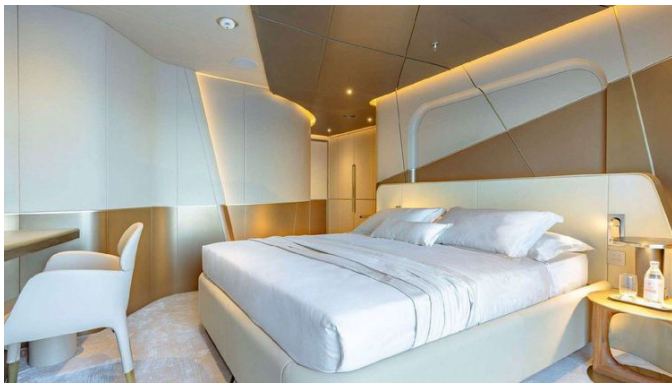














---

# DETAILED DESCRIPTION

---

## Accommodations

---

A sanctuary of contemporary comfort, the master cabin crowns the upper deck with a generous double bed, a private office area complete with a writing desk, and a walk-in dressing room with ample shelving and stowage. Natural light pours through a glass skylight, while a dedicated safety exit/door provides added peace of mind. The ensuite bathroom features a spacious shower, balancing luxury with practicality for extended cruising. Two VIP cabins welcome guests in refined style, each appointed with twin beds, a wardrobe, bedside tables, and a safe box, plus a private ensuite bathroom. On the lower deck, two additional guest cabins mirror this thoughtful arrangement, each with twin beds, wardrobe, bedside tables, safe box, and its own ensuite. The crew quarters are designed for efficiency and privacy: a captain's cabin with a double bed, wardrobe, and safe box is complemented by five crew cabins with twin beds; every captain/crew cabin benefits from its own head. For indulgent living, a versatile playroom hosts a PlayStation and a 50' Samsung TV and can be converted into an additional guest cabin as needed. Entertaining flows effortlessly with a formal dining area featuring a round table for twelve people, a well-stocked bar, and a swimming pool. A serene spa includes a dedicated treatment area, a sauna, and a sensorial shower, while the galley's polarized glass invites show cooking that turns culinary craft into theater.

## Tender and toys

---

The waterline is superbly outfitted for adventure with a Castoldi Jet Tender 18RB powered by a Yanmar 230 hp engine and two Seadoo 330 hp three-seat personal watercraft. A comprehensive Searaft setup elevates the fun and functionality: a Pool Corridor, Double Jetski Dock, and Leisure Dock including a

sea pool net, complemented by a sea pool area measuring 4 x 4.8 m and a Searaft South Dock sized 5.8 x 2.0 x 0.2 m. Thrill seekers will appreciate four Seabob F5 units, Jobe Vanity wakeboards in 131 and 141 sizes, an eFoil, and a SUP. Towable toys include the Binar Towable and Hotseat Towable, alongside a kneeboard and a two person inflatable kayak. Rounding out the toy chest is a Jobe Seascooter, ensuring boundless possibilities for every age and skill level.

## Audio & visual equipment

---

Immersive entertainment is orchestrated by a Crestron audio system with intuitive iPad controllers in all guest areas and bathrooms, allowing seamless mood and volume control at a touch. Visual pleasures abound: every stateroom features a Samsung 50" TV, the main salon commands attention with a Samsung 100" TV, and additional Samsung 50" screens serve the upper deck and the playroom. The crew is equally well catered for, with a Samsung TV in the crew mess and Samsung TVs in the crew cabins, ensuring everyone onboard enjoys flawless audio visual comfort.

## Machinery

---

Purpose built for powerful, composed performance, the yacht is driven by two MTU 16V2000 M96L engines delivering 2 x 1939 kW (2600 bHP) at 2450 rpm. As of January 2026, engine hours stand at Port 964 hrs and Stbd 964 hrs, reflecting careful operation and diligent maintenance. Precision handling comes via a hydraulic power pack steering gear by OPEM Sistemi, feeding two ZF 5350 reduction gears with  $i=5.040$ , while a pair of FPP NiBrAl propellers with five blades translate power into poised thrust. On the water, she attains a maximum speed of 17.5 knots (at 100% MCR,  $\pm 5\%$  at trial load), cruises comfortably at 16.0 knots (at 90% MCR,  $\pm 5\%$  at trial load), and offers a compelling range of 3300 nm at 10 knots.

## Generators & auxiliary equipment

---

Electrical self-sufficiency is underwritten by two Caterpillar C7 generators rated at 150 kW, 400 V, 50 Hz, three-phase. As of January 2026, the Port Gen records 1950 hrs and the Stbd Gen 1880 hrs. Shore connectivity is equally robust with two three-phase 400 V, 125 A shore supply connections, while onboard distribution spans 12/24 V and 230 V AC. Battery architecture is comprehensive: four pairs of Mastervolt engine batteries (total 8), plus eight pairs of Mastervolt generator/service/backup batteries (total 16), supported by an emergency navigation battery MVG 12/200. Charging is optimized via two Mastervolt MASS 24/75 C chargers for the main engines, two Mastervolt MASS 24/75 C units for the generators, a dedicated MASS 24/50 emergency navigation battery charger, and a GMDSS battery charger. For resilience, the yacht carries two 12/24 V POWER BOX battery booster jump starters and a UPS battery pack.

## Tank capacities

---

Designed for autonomy at sea, the yacht carries 19500 L (5070 gal) of fresh water, with 5690 L (1479 gal) of grey water capacity and 3380 L (879 gal) of black water capacity. Two Idromar MC5 DUPLEX watermakers, each producing 250 L/hr, replenish supplies with proven reliability. Engineering fluids are equally well managed, with 1720 L of lubricating oil and 1670 L of dirty lub oil capacity. Dedicated systems further include a 17,050-liter pool water tank, a 4,000-liter water mist reserve, a 2,120-liter reactant (urea) tank for emission control, and a 1,030-liter sludge tank—capacities that collectively support comfort, compliance, and extended cruising.

## Ancillary equipment

---

Maneuvering finesse begins at the bow with twin OMS E 0400 V thrusters rated at 63 kW, 400 V, 50 Hz, three phase. Fuel is polished through Racor 900MAM filters, while a 240 V WAVE MiniBoss bilge water separator and UV Selmar Blue Sea sewage treatment units uphold environmental standards. Hull protection is assured by a Tecnoseal International antifouling system. Engine room ventilation is carefully managed by two exhaust fans monitored by the Central Monitoring System (CMS), with Tecnavi fans serving both the engine room and galley. Compressed air is supplied by an electrically driven, air cooled compressor; the port and starboard engine room SCR systems employ Hydrovane HV 02/Comair FM3 with dedicated AIR dryers. Climate control is entrusted to two main PITZEN air conditioning units feeding TECNAVI fancoils throughout all areas. A comprehensive pumping suite by Gianneschi supports operations end to end: dirty lub oil/bilge water transfer, clean/dirty lub oil via Gianneschi FQ25, two self priming centrifugal pumps for black/grey water, fuel oil transfer with two Gianneschi E 0400 V units, forepeak submersible bilge pumps, engine room cooler sea water pumps, and a urea discharge pump; the air conditioning system's sea water pumps are by Tecnavi. Fresh water delivery relies on Gianneschi JETS pumps, with an Idrofast 9100 water softener, Idromar filling carbon filter, Idromar UV sterilizer, two Inox water heater boilers by Gianneschi (300 L each), and two Gianneschi hot water circulating pumps completing a quietly capable backbone.

## Safety & security equipment

---

Vigilant protection begins with a comprehensive CCTV suite: six fixed cameras and five motorized units, complemented by a motorized FLIR M232 camera, a matrix switch, a bridge mounted keyboard, and a CCTV video signal repeater feeding a 15" monitor in the crew mess. Life saving equipment is complete

and ready, including four inflatable life rafts, a full complement of life jackets, four ring buoys, three line throwing appliances, a handheld air horn with spare cylinder, and a full set of distress signals. Fire protection is multilayered with portable fire extinguishers, fire and safety plans, an engine room fire extinguishing system, smoke/heat/gas detectors, and an ultra fog system; fire fighting and emergency fire fighting capability is delivered by Gianneschi ACB 631/B pumps. Further safety measures include a Category A medical kit, a bilge alarm, a separate fire room, and onboard safes—quiet confidence built into every passage.

## Communication equipment

---

Ship to shore and onboard comms are handled with professional grade hardware: an EPIRB Sailor 4065 stands guard for emergency alerting; VHF capability includes a SAILOR RT 6248 DSC radio and Sailor SP3520 handheld. A radar transponder (SART) enhances search and rescue visibility, while internal communication flows through a Phontech CIS 3130 system. A separate IT room on the main deck provides a secure, serviceable hub for network and system management.

## Navigation equipment

---

Command is centralized across six LCD monitors with fully tailored navigation system controls, unifying a Team Italia i.Bridge suite with the yacht's Data Control and Monitoring System. Core sensors and comms include a Sperry Marine Navigat 100 gyro compass, Furuno GP 170 GPS navigators, INMARSAT C Sailor 6110, NAVTEX SAILOR 6391, AIS Sailor 6004 Cobham, and DSC Sailor 6301, all integrated with an ECDIS Wartsila Voyager for confident passage planning. Situational awareness is reinforced by Furuno FAR 2218 and FAR 2238S radars, two depth sounders, and a bow thruster joystick control for

precise low speed handling. Additional helm refinements include Humphree flaps controllers and a Khaleberg horn. For ultimate control when docking, there are two bridge wing control stations to port and starboard, while an automatic fenders release system can be operated directly from the helm.

## Deck equipment

---

Anchoring and mooring are confidently managed with two galvanized steel bow anchors of the Danford type at 420 kg each, 160 m of anchor chains, and a pair of electric stainless steel 316L Maxwell anchor windlasses. Four electrically driven stainless steel warping capstans by T&T serve the forward and aft mooring decks, while eight mooring lines provide a total length of 240 m. Deck operations are supported by two SANSHIN 24 V remote control searchlights, a side boarding ladder, and an electro hydraulic crane rated to 2000 kg SWL. A Hydromar aft hydraulic platform eases water access and tender handling, complemented by a Jacuzzi whirlpool pool with heater and a dramatic array of eighteen OCEANLED underwater lights. In the garage, a Besenzoni crane with 600 kg SWL teams with a portable HARKEN Carbon crane also rated to 600 kg SWL, and a Gianneschi PE56 tender refueling system streamlines daily operations.

## Office equipment

---

A dedicated ship's office is equipped with a Canon TR4650 printer, ensuring reliable document handling from voyage plans to guest communications.

## Galley and domestic equipment

---

The main galley is a chef's stage, outfitted with two 90 cm cooking plates, a Wolf UV extractor hood, and two 90 cm KMN Professional ovens, supported by

a dishwasher, an Alpes inox basin, and two fryers. Cold storage is generous with a fridge and a freezer, while smart waste handling comes via an Insinkerator macerator and a dedicated food pulverizer. Quick service is aided by a Miele microwave, a Hoshizaki icemaker, and a food vacuum sealer. The main salon bar keeps conversation flowing with a Miele K 9122 Ui fridge, an Indel Webasto Marine icemaker, two wine coolers, and a cigar humidor. Up on the sun deck, a compact bar with a fridge and an icemaker keeps refreshments close at hand. The pantry is comprehensively equipped with an Alpes inox VSR40 basin with faucet, a Miele KM6388 cooking plate, a Wolf ICBPW362418 extractor hood, a Miele K37272 iD fridge, a Miele freezer, a Miele M6032SC microwave, a Hoshizaki icemaker, and a coffee machine—perfect for discreet service. Laundry care is professional grade with two Miele Inox Professional dryers and two Miele Inox Professional washing machines. The crew mess remains efficient with a Bosch fridge, a Bosch dishwasher, and a Miele microwave. For seamless hospitality across decks, an Aliseo Sistemi dumbwaiter lift links the galley, pastry area, and sundeck, ensuring service is swift and silent.

# CONTACTS

---

Shestakov Yacht Sales is a brokerage company specializing in the sale and service of yachts worldwide. The company offers services for buying and selling both new and used motor yachts, sailing vessels, and luxury superyachts. They also provide yacht registration, insurance, technical maintenance, crew selection, and charter organization services across the U.S., Canada, Latin America, the Caribbean, and the Bahamas.

The founder and lead broker of the company is Andrey Shestakov, a licensed and certified expert with extensive experience in marine engineering and shipbuilding.

The company has an extensive network of partnerships with major yacht manufacturers worldwide and provides services in multiple languages, including Russian, Ukrainian, Spanish, and English. The office is in Dania Beach, Florida, USA.

For more information and to view available yachts, you can visit the company's official website: <https://shestakovyachtsales.com>

## Contact details

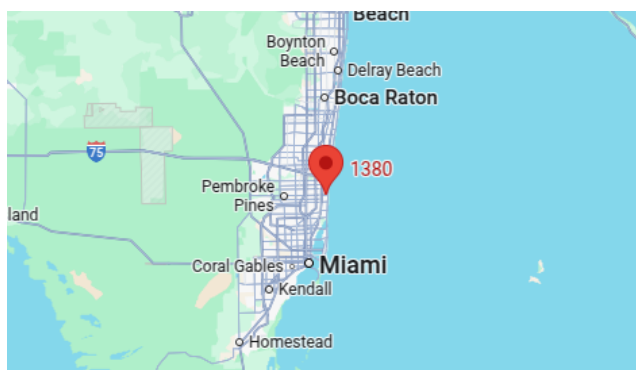
---

**Phone:** +1(954)274-4435

**Email:** [andrey@shestakovyachtsales.com](mailto:andrey@shestakovyachtsales.com)

## Address

---



1380 Weeping Willow Way, Hollywood,  
Florida 33019