

## LADY J - PALMER JOHNSON



**Builder:** [PALMER JOHNSON](#)

**LOA:** 142' 0" (43.28 m)

**Year Built:** 1997

**Beam:** 24' 0" (7.60 m)

**Model:** N/A

**Max Draft:** 21' 7" (6.58 m)

**Price:** \$6,450,000 USD Subject to change.

**Cruising Speed:** 12 Knots (13.81 MPH)

[See full listing on our website](#)

**Location:** Fort Lauderdale, United States

**Max Speed:** 17 Knots (19.56 MPH)

---

# TABLE OF CONTENTS

---

<b>OVERVIEW .....</b>	<b>3</b>
<b>SPECIFICATIONS .....</b>	<b>4</b>
Basic Information .....	4
Dimensions .....	4
Speed, Capacities and Weight .....	4
Accommodations .....	5
Hull and Deck Information .....	5
Engine Information .....	5
<b>GALLERY .....</b>	<b>6</b>
<b>DETAILED DESCRIPTION .....</b>	<b>12</b>
<b>CONTACTS .....</b>	<b>21</b>

## OVERVIEW

---

LADY J is a superb luxury motor yacht presented in pristine condition, the culmination of extensive upgrades and bespoke appointments, and she features raised panels of Cuban mahogany throughout her interiors. Her graceful, timeless exterior and interior lines are paired with state-of-the-art entertainment systems, creating an atmosphere that balances sophisticated relaxation with vibrant onboard entertaining. Fully equipped with an impressive suite of tenders and water toys, LADY J is ready to deliver unforgettable blue-water adventures, offering the elegance and comfort that distinguish her from the rest.

---

# SPECIFICATIONS

---

## Basic Information

---

**Model Year:**  
1997

**Country:**  
United States

**Year Built:**  
1997

## Dimensions

---

**LOA:**  
142' 0" (43.28 m)

**Max Draft:**  
21' 7" (6.58 m)

**Beam:**  
24' 0" (7.60 m)

## Speed, Capacities and Weight

---

**Cruise Speed:**  
12 Knots (13.81 MPH)

**Water Capacity:**  
2000 Gallons

**Max Speed:**  
17 Knots (19.56 MPH)

**Fuel Capacity:**  
13000 Gallons

**Gross Tonnage:**  
389 Pounds

## Accommodations

---

**Total Heads:**

7

**Crew Cabin:**

5

## Hull and Deck Information

---

**Hull Material:**

Aluminum Yachts

**Hull Designer:**

N/A

**Deck Material:**

Aluminum

**Interior Designer:**

N/A

**Hull Configuration:**

N/A

## Engine Information

---

**Engines:**

2

**Engine Type:**

Inboard

**Manufacturer:**

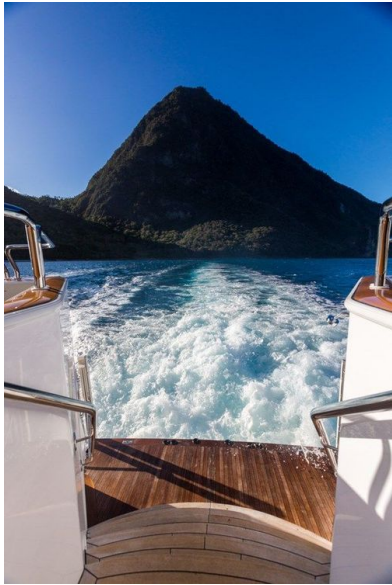
Caterpillar

**Fuel Type:**

Diesel

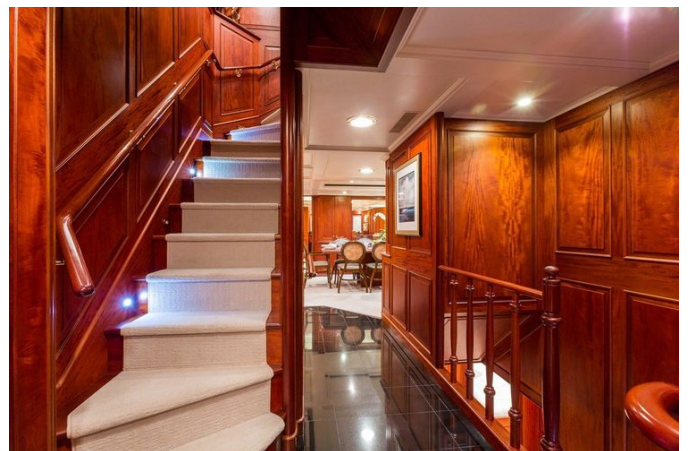
# GALLERY













---

# DETAILED DESCRIPTION

---

## Overview

---

LADY J epitomizes the finest of Wisconsin shipbuilding, marrying her unmistakable Palmer Johnson lineage with the sculpted, seaworthy profiles of Tom Fexas Yacht Design to produce an iconic presence both at rest and underway. Inside, Terence Disdale's interiors evoke a timeless balance of texture and tone, where richly detailed Cuban Mahogany raised paneling and carefully selected furnishings combine to form a warm, sophisticated atmosphere. Laid out over three decks, the five-stateroom accommodation plan—with the full-beam master suite situated on the main deck—provides generously proportioned public and private areas that read as both luxurious and livable, a testament to the shared vision of Fexas and Disdale for enduring nautical elegance. Recent, owner-driven upgrades enhance her turnkey appeal: new Caterpillar engines and ZF transmissions were installed in 2021, the vessel retains her Palmer Johnson pedigree with ABS classification and MCA certification, and she benefits from Quantum zero-speed stabilizers for exceptional comfort at anchor. A comprehensive complement of water toys and sports equipment accompanies a shallow draft ideal for effortless cruising in the Bahamas, while re-manufactured generators recorded zero hours as of 12/1/2023. Meticulously maintained and continuously updated, LADY J has earned a reputation as one of the leading charter yachts in her category, supported by a substantial book of business and immediate income potential, and she is presented ready to impress.

## Accommodations

---

Enter Lady J from the aft deck through elegant double doors and you are welcomed into an expansive main saloon where a comfortable seating area

occupies the starboard side while a finely crafted, custom built-in credenza runs along the port side. Moving forward to port within the saloon, a generous L-shaped settee encircles end tables, a central ottoman and an armchair, while to starboard a second bespoke credenza discreetly houses a pop-up television for effortless entertainment. Ahead of the saloon, a formal dining room features a custom Cuban mahogany table that accommodates ten guests, and a passage to port provides access to a private serving pantry with direct connection to the galley and onward to the crew entrance. From the dining area a corridor leads forward and upward to the sky lounge or downward to the guest accommodations; to starboard, the formal foyer marks the vessel's principal entry and includes a day head, a hanging locker and the approach to the master office and the full-beam master suite, where a king berth is complemented by generous closets and an expansive bathroom appointed with both a tub and a separate shower. A staircase from the formal foyer descends to the guest foyer, which serves four well-appointed guest staterooms, each with its own en-suite, full entertainment systems, ample storage and comfortable berths, and the yacht's sleeping plan is highly adaptable: Option A provides one king, two queens, four singles and two trundles; Option B offers two kings, two queens, two singles and two trundles; Option C arranges three kings, two queens and two trundles. Returning to the formal foyer and ascending, the sky lounge deck foyer flows forward into a well-equipped pilothouse fitted with two Stidd chairs and a viewing settee, with the captain's cabin tucked to port; moving aft from the pilothouse a day head serves the area before reaching the sky lounge, which unfolds as a generous retreat with a full bar centered to port, a settee and additional seating to starboard and a four-chair card table aft to port. Double doors flanked by glass panels open from the sky lounge onto the bridge deck aft, where a large teak dining table for twelve is paired with built-in settees aft on either side, each featuring a central cockpit table; from this deck a stair descends to the aft deck while a stair to port and forward rises to the sundeck, which is appointed with

four loungers, a Jacuzzi with bar seating and a walk-up service bar for effortless alfresco entertaining. On the main deck aft a round teak table seats ten for open-air dining, and an elegantly curved stair leads down to an expansive swim platform perfectly suited for boarding a tender to shore or launching water-sports adventures.

## Main characteristics

---

Crafted by Palmer Johnson and delivered in 1997 with a comprehensive refit completed in 2021, she measures an LOA of 43.3 m (142 ft 1 in), a beam of 7.6 m (24 ft 11 in) and a draft of 2 m (6 ft 7 in). The exterior lines are by Tom Fexas, who also provided the naval architecture in collaboration with Palmer Johnson, while the interiors are the creation of Terence Disdale; built to ABS and MCA compliant standards, she registers a gross tonnage of 389 tons and a net tonnage of 116 tons and wears a timeless white hull. At sea she cruises comfortably in the region of 11.5 to 12 knots and will reach a maximum speed of approximately 17.2 knots, offering a range of about 3,000 nm at 10 knots (1,450 rpm) with a 10% fuel reserve and a consumption of 38.75 gph. Her long-range capability is supported by a fuel capacity of 49,205 Liters (12,998 US Gallons) and a fresh water capacity of 7,570 Liters (1,999 US Gallons), with fuel burn recorded at 70 gph at 12.5 knots, 110 gph at 14.5 knots and 160 gph at 17.2 knots.

## Main machinery

---

Propulsion is provided by a pair of Caterpillar C32 ACERT D rated engines, each rated at 1,625 HP and installed new in 2021, turning conventional propeller-and shaft drives through ZF 3050 gearboxes with a 2.952:1 ratio, also renewed in 2021. The yacht runs on diesel and is steered from the pilothouse with full control available at both wing stations, while onboard

comfort and roll reduction are maintained by Quantum Zero Speed Stabilizers. As of May 2026 the engine logs record Port 2,225 hours and Starboard 2,225 hours, and an option exists to extend warranty coverage through 2031.

Auxiliary electrical power is delivered by two Northern Lights generator sets, each rated 66 KW, 60 HZ, 1,800 RPM and 120/208 Volt, capable of single or three phase output and mounted within sound shields for quiet operation. One engine was remanufactured in 2023 and new electrical ends were fitted in 2018; generator hours stand at Port 4,000 and Starboard 4,000 as of May 2026. The vessel's electrical distribution is AC 120/208 Volt, 60 cycle, supported by an Atlas 73 KVA shore power connection and onboard battery banks.

Climate control is handled by Flow Marine compressors, replaced in 2018, with dedicated air handlers serving each area of the yacht. Maneuvering in tight quarters is assisted by a 20 inch bow thruster of approximately 80 HP, providing proportional control from both the console and the wing station. Freshwater independence is ensured by two FCI Aqua Miser + watermakers, each rated at 1,800 GPD.

## Domestic equipment

---

The yacht's galley and service quarters are outfitted to support both refined entertaining and ambitious culinary programmes, featuring two Kitchenaid ovens installed in 2018, a Samsung microwave and a Wolf induction cooktop fitted in 2020. Dishwashing is handled with professional efficiency by a Jet Tech industrial dishwasher working alongside a Miele dishwasher, while refrigeration is plentiful thanks to a pair of Sub Zero refrigerators and two Sub Zero freezers, augmented by two chest freezers—3.5 cubic feet in the galley and 4.5 cubic feet in the lazarette. Beverage and coffee service are maintained at the highest level with two espresso machines and six compact bar fridges placed strategically throughout the guest areas, including the master, sundeck, bridge deck, guest foyer and lazarette. Laundry requirements are met with two

Miele washing machines and two Miele dryers. Cold preparation and preservation conveniences include a Paco Jet ice cream maker, a Thermomix and a vacuum sealer, while ice production is secured by two smaller ice machines in the guest zones and a dedicated commercial ice machine. A selection of additional professional small appliances—among them a Vitamix, an air fryer and a deep fryer—completes a turnkey culinary suite designed for service at the highest standard.

## Communication equipment

---

Connectivity aboard is uncompromised, delivered by two Starlink communication and internet systems alongside a Sailor 900 VSAT installed in August 2019 that provides reliable Wi-Fi, with extended long range capability via Fleet 55 and Sailor SAT C. Shipwide voice and operational communications are managed through a Toshiba Strata telephone system in concert with a Furuno DSC VHF radio, a Sailor VHF radio and a Sailor SSB radio fitted in 2018, while two GPS units support the navigation suite and onboard mobile devices. Safety and situational awareness are enhanced by a Pains Wessex EPIRB and a newly installed digital video surveillance system comprising five cameras and an onboard hard drive. Satellite television and entertainment are delivered by two networked Intellian TVRO antennas, and administrative functions are covered by an HP fax/printer/scanner.

## Navigation equipment

---

At the helm, the bridge is appointed with a JRC JMA 5300MK2 radar fitted with two X-band units, a Furuno FM 8900s VHF and a B&G H3000 controller delivering precise wind and meteorological information. Course-keeping is entrusted to a Simrad AP70 MK2 autopilot paired with a Simrad FU80 FU control, while situational awareness and positioning are provided by a Furuno

FA170 AIS and dual GPS via a Furuno P3007 and a Furuno GP 32, complemented by a Montavue 8 channel 4k H265 CCTV system for comprehensive surveillance. The captain's desk extends the suite with a Furuno NX-700 NAVTEX, a Sailor 6006 message terminal for SAT-C, an additional Furuno FM 8900s VHF, a Sailor 6301 MF/HF controller, and dedicated navigation computers running Transas Navi sailor 4000 software version 3.00.340 and Nobletec Time zero – Software version 4.1.0.51.

## Entertainment equipment

---

A vast DVD and CD collection forms the backbone of an exceptional onboard media program, complemented by DSS Satellite TV with reception spanning Europe, the USA, the Bahamas and the Caribbean, while Wii and XBOX 360 consoles paired with a huge assortment of games deliver family-friendly diversions for every voyage. In the Main Salon a Runco 50" retractable plasma television is paired with a NAD amp receiver with DVD/CD player, four sets of Sony speakers, an iPod docking station and AppleTV to create a true cinematic environment. The Skylounge mirrors this high-end specification with a 50" retractable LG plasma television, a Viso 5 receiver amp/DVD/CD player, a Sony HiFi VCR, four sets of Sony speakers, an iPod docking station and AppleTV for relaxed evenings and live sports. The Master Stateroom is equipped for private viewing with a 32" Samsung flat screen television, a NAD amp receiver with DVD/CD player, a Sony HiFi VCR, four sets of Sony speakers and an iPod docking station. Guest Staterooms offer 20" Sharp flat screen televisions with Smart TV capability including Netflix and Peacock, while the crew quarters include a 32" Smart TV and the Captain's cabin is fitted with a 27" Smart TV, ensuring connectivity and entertainment throughout the yacht.

## Deck equipment

---

The foredeck is equipped with two 330-pound Pool N anchors paired with two Maxwell hydraulic windlasses, and secured by two 450-foot lengths of 5/8-inch galvanized chain to ensure steadfast holding and seamless operation. A bow-mounted crane is configured to carry two wave runners while providing valuable additional stowage. Boarding and shore access are elegantly managed by a 4-meter Sanguinetti passerelle complemented by two Marquipt sea stairs finished with teak treads. The aft deck accommodates a pair of Maxwell VWC3500 hydraulic units.

## Safety, firefighting, and security equipment

---

Prepared for every passage, the yacht is outfitted with twenty-seven adult and four child-size USCG- and SOLAS-approved life jackets, twelve Type II inshore life jackets and thirty-one ASE emergency escape hoods. Four 30-inch life rings are positioned for rapid deployment, while ACR searchlights together with a Carlisle and Finch searchlight deliver potent illumination for nighttime operations. Detection and alarm systems are fully integrated and discreet: smoke detectors in all guest cabins, carbon monoxide and heat detectors protecting the engine room and lazarette, and a suite of audible and visual indicators tied to a centralized monitoring system that oversees fire, water ingress, smoke, bilge water levels and fuel overflow. Fire protection is designed to commercial standards, featuring a CO2 pull-pin shutoff system for the engine room, a dedicated galley fire pull pin paired with an Ansul R-102 wet-chemical suppression system, an EEBD in the engine room and two firefighting suits. Offshore readiness is assured with two twenty-person Switlik SOLAS A life rafts in canisters, each supplied with an offshore survival package, and onboard medical support comprises a Class B full medical emergency kit plus a telemedicine subscription with MSOS.

## Tender and watersport equipment

---

Outfitted for boundless exploration, the yacht carries a fourteen-foot Aquascan tender propelled by a Yamaha outboard and two Yamaha VXR Cruiser wave runners from 2019, delivering both dependable transfers and exhilarating on-water fun. Guests can set their own pace with four kayaks and two stand-up paddleboards, while a generous collection of water toys ensures entertainment for all ages; anglers will appreciate a full complement of fishing equipment, and wellness-minded guests benefit from dedicated exercise equipment onboard. For serious underwater adventures the yacht is equipped with scuba gear for eight divers and is supported by a Bauer dive tank compressor with spare parts to maintain uninterrupted diving operations.

## Refit history

---

Across a succession of meticulous refit programs the yacht has been continually refreshed and enhanced to the highest standards. In 2025 the vessel received new fabrication and replacement of the main engine exhaust over the last six feet, an upgraded and more automated steering transfer system allowing seamless transitions from FU to backup to emergency, and two new FCI Aqua Miser+ watermakers, each rated at 1,800 GPD. The 2024 scope encompassed a complete rebuild of the stabilizer fin actuators, the ABS drydocking survey in process, sandblasting and recoating of the black and grey tanks, the installation of a new Alfa Laval fuel polisher, and newly fabricated sea chests constructed to ABS standard. During 2023 re-manufactured generator engines were installed, a four thousand hour service was carried out on the stabilizers, a partial repaint refreshed the vessel's profile, and two Starlink internet antennas were fitted. In 2022 a new Gyro Sphere was installed. The comprehensive 2021 program replaced the main engines and transmissions and delivered a full factory warranty extendable to 2031,

completed the five-year ABS Special Survey, renewed all running gear bearings and seals, issued a new Stability Book, performed a major service on the Quantum stabilizers, and added an AB Model 310 Jet Tender—2019 model—to the inventory. In 2020 teak was replaced on the main deck, swim platform and associated steps. Earlier, in 2018, teak was renewed on the bridge deck, Portuguese bridge and steps to the foredeck, the topsides were repainted at Luu Marine, generator electrical ends were replaced, the galley was remodeled with all new appliances, and new Flow Marine A/C chillers were installed.

## Comments

---

LADY J is a meticulously outfitted and robustly constructed, US-built motor yacht that reflects the renowned Palmer Johnson workmanship originating in Wisconsin. She has enjoyed a lineage of discerning owners who have diligently maintained her in excellent condition, and over time she has received a series of substantial upgrades, most notably the installation of brand-new Caterpillar C32 main engines mated to ZF transmissions. Fully prepared to go to sea for private cruising or immediate charter service, LADY J presents an attractive prospect for those purchasing their first yacht as well as the most experienced yachtsman.

## Exclusions

---

The sale expressly excludes the thirty-foot Intrepid towed tender, the owner's personal effects—including two sets of slalom skis and the ski rope—and all personal belongings of the crew.

# CONTACTS

---

Shestakov Yacht Sales is a brokerage company specializing in the sale and service of yachts worldwide. The company offers services for buying and selling both new and used motor yachts, sailing vessels, and luxury superyachts. They also provide yacht registration, insurance, technical maintenance, crew selection, and charter organization services across the U.S., Canada, Latin America, the Caribbean, and the Bahamas.

The founder and lead broker of the company is Andrey Shestakov, a licensed and certified expert with extensive experience in marine engineering and shipbuilding.

The company has an extensive network of partnerships with major yacht manufacturers worldwide and provides services in multiple languages, including Russian, Ukrainian, Spanish, and English. The office is in Dania Beach, Florida, USA.

For more information and to view available yachts, you can visit the company's official website: <https://shestakovyachtsales.com>

## Contact details

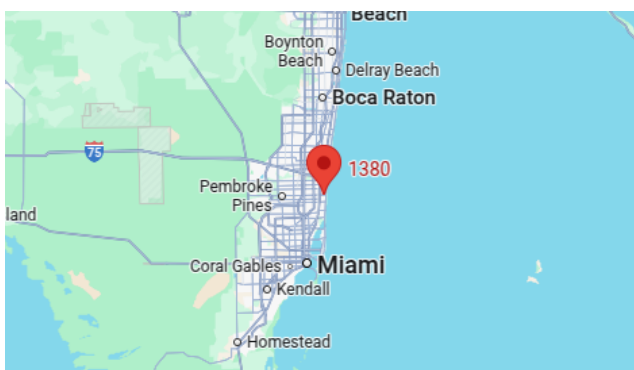
---

**Phone:** +1(954)274-4435

**Email:** [andrey@shestakovyachtsales.com](mailto:andrey@shestakovyachtsales.com)

## Address

---



1380 Weeping Willow Way, Hollywood,  
Florida 33019