

VALERIA - FEADSHIP



Builder: [FeadShip](#)

LOA: 145' 0" (44.20 m)

Year Built: 1975

Beam: 26' 0" (8.05 m)

Model: N/A

Max Draft: 9' 6" (2.90 m)

Price: \$10,412,810.07 USD Subject to change.

Cruising Speed: 10 Knots (11.51 MPH)

[See full listing on our website](#)

Location: Urk, Netherlands

Max Speed: 14 Knots (16.11 MPH)

TABLE OF CONTENTS

OVERVIEW	3
SPECIFICATIONS	5
Basic Information	5
Dimensions	5
Speed, Capacities and Weight	6
Accommodations	6
Hull and Deck Information	6
Engine Information	7
GALLERY	8
DETAILED DESCRIPTION	17
CONTACTS	23

OVERVIEW

Motor yacht VALERIA, originally crafted by De Vries Yachts as the 130-foot T.S. Steel Motor-yacht "LAC II" for an American patron, holds the distinction of being the first private yacht equipped with an onboard helicopter.

The current owner, a visionary engineer with a keen eye for detail, embarked on an extensive refit after acquiring the yacht in 2005. This transformation evolved into the creation of a contemporary motor yacht while preserving the classic Feadship silhouette.

To enhance her performance and aesthetics, the owner opted for a subtle transom extension, increasing her length from 38 to 44.2 meters, alongside a complete overhaul of the flybridge and sun deck. The yacht has undergone significant upgrades, including the replacement of all primary machinery and technical systems, featuring new generators and main engines, comprehensive rewiring to meet modern standards, a new underwater exhaust system, upgraded air-conditioning, and the installation of Zero-Speed stabilizers. The yacht has been meticulously re-faired and repainted from the ground up, with all teak decking replaced with brand new materials.

The interior has been exquisitely redesigned by renowned UK firm Design Unlimited, while Laurent Giles Naval Architects and De Vooght Naval Architects have ensured that the exterior remains true to the yacht's original elegance. As expected from a rebuild of this magnitude, state-of-the-art navigation, communication, entertainment, and electronic systems have been seamlessly integrated.

All renovations have been executed under the guidance of De Vooght Naval Architects and received approval from Feadship and BV.

Upon completion of this comprehensive rebuild, M/Y VALERIA will comply with MCA regulations, emerging as a brand new Feadship with timeless lines, accommodating up to 12 guests and 9 crew members.

This remarkable vessel has also been designated a place in The Feadship Heritage Fleet, making it a standout option in the current yacht sales market. If you are looking to buy a yacht that embodies luxury and sophistication, VALERIA is an exceptional choice in the current boat location.

SPECIFICATIONS

Basic Information

Category:
Motor yachts

Year Built:
1975

Sub category:
Motor Yacht

Country:
Netherlands

Model Year:
1975

Dimensions

LOA:
145' 0" (44.20 m)

Max Draft:
9' 6" (2.90 m)

Beam:
26' 0" (8.05 m)

Speed, Capacities and Weight

Cruise Speed:

10 Knots (11.51 MPH)

Water Capacity:

4361.48 Gallons

Max Speed:

14 Knots (16.11 MPH)

Fuel Capacity:

13742.23 Gallons

Gross Tonnage:

360 Pounds

Accommodations

Sleeps:

12

Crew Berths:

9

Hull and Deck Information

Hull Material:

Steel Yachts

Hull Designer:

De Voogt Naval Architects

Deck Material:

Steel

Interior Designer:

Design Unlimited

Hull Configuration:

Full Displacement

Engine Information

Engines:

2

Engine Type:

Inboard

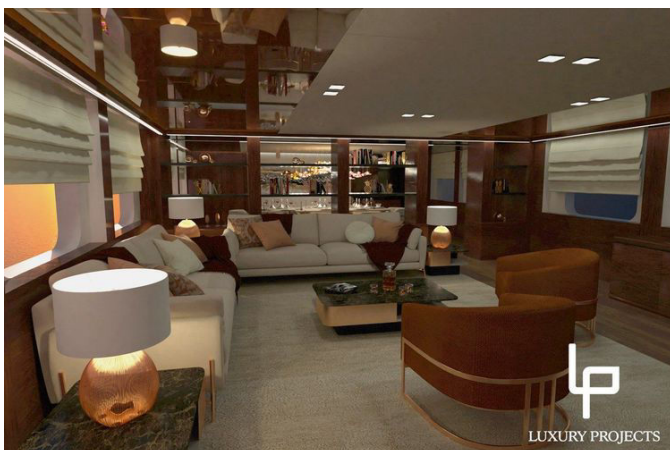
Manufacturer:

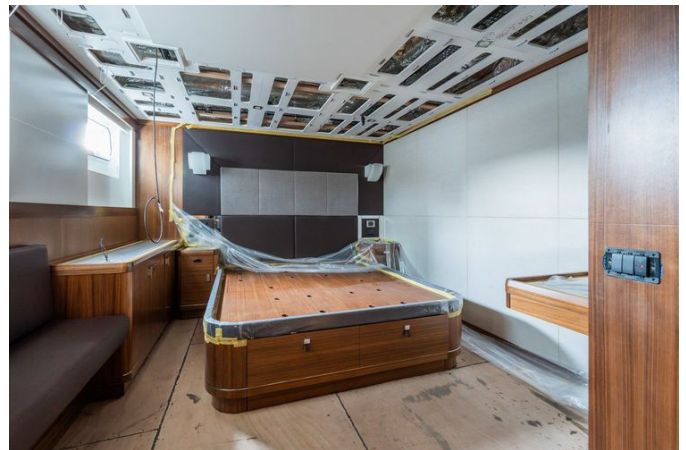
Caterpillar

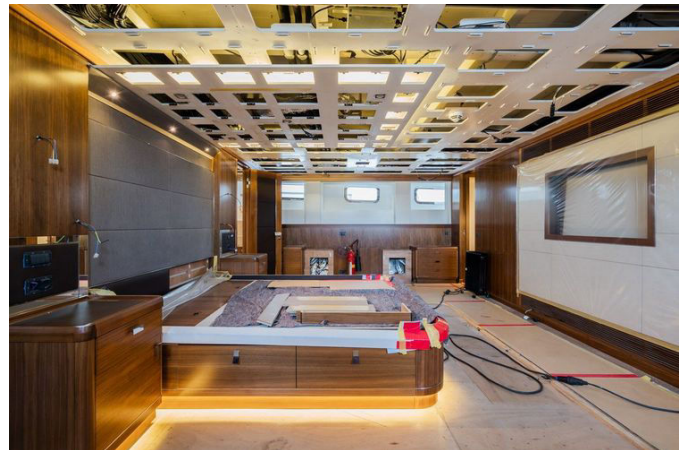
Fuel Type:

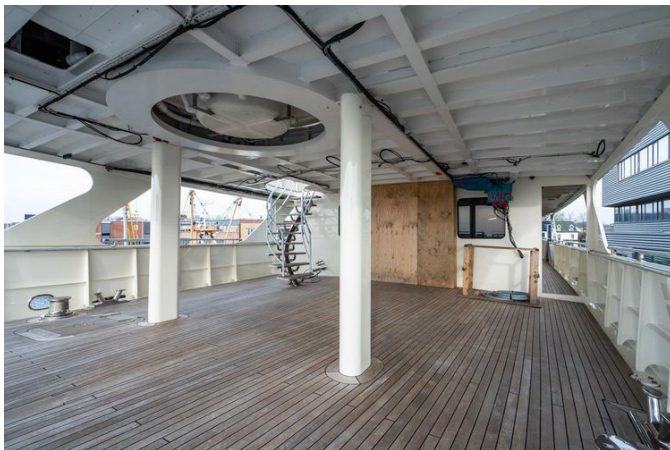
Diesel

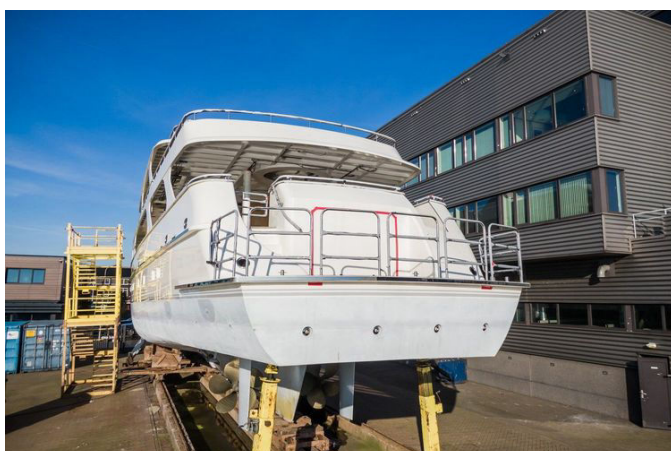
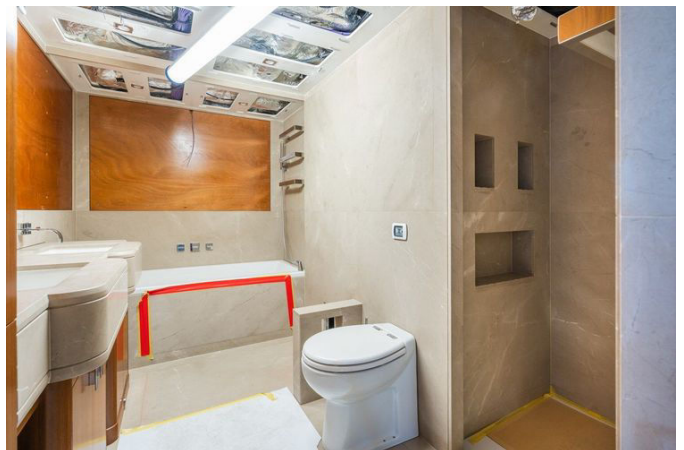
GALLERY

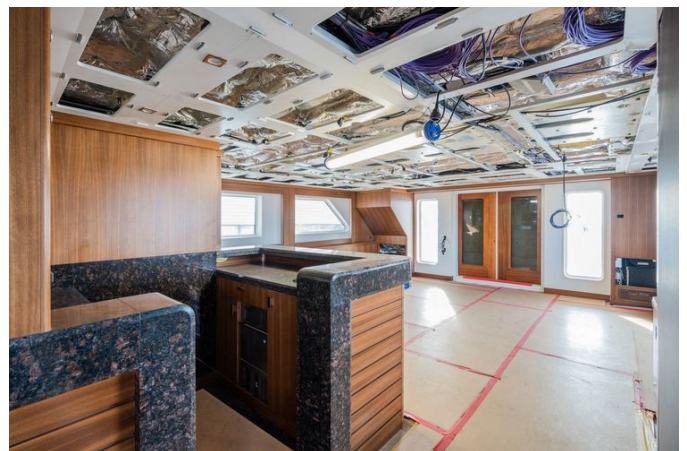
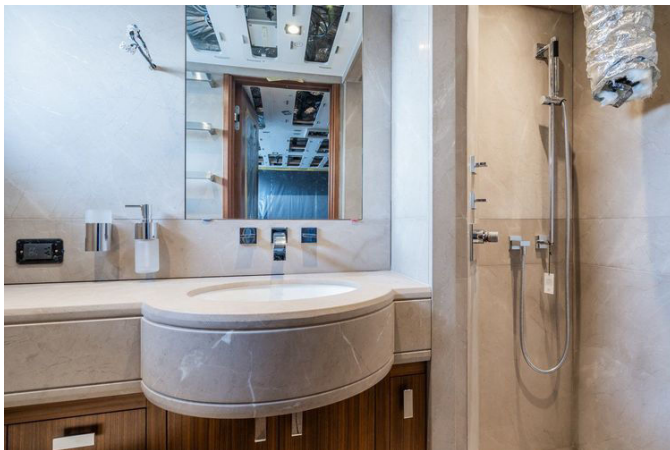
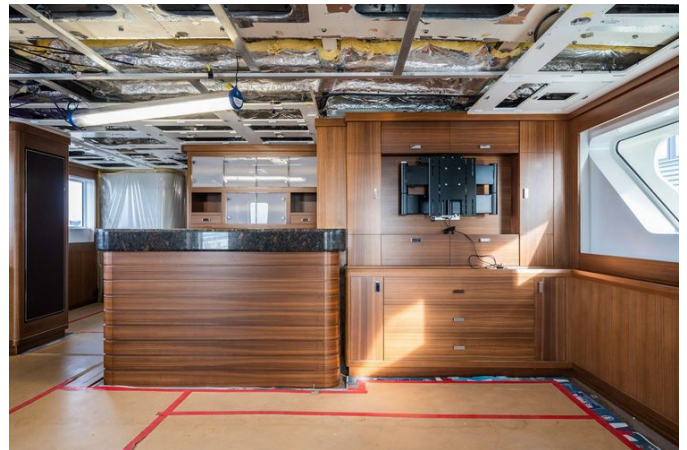


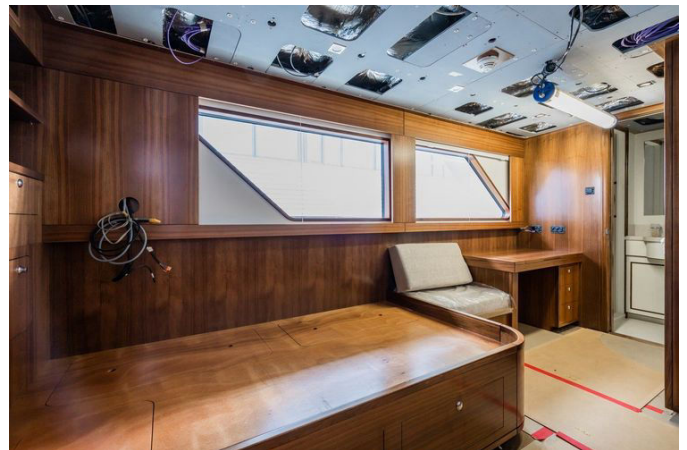


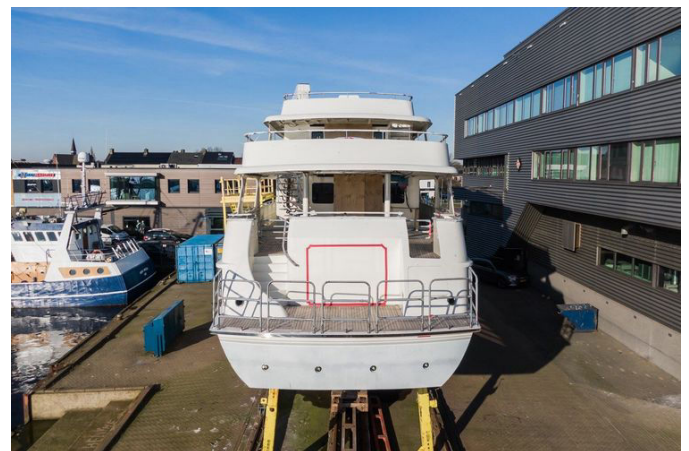














DETAILED DESCRIPTION

Specification

This exquisite yacht, built by the renowned FEADSHIP in 1975 and refitted in 2021, is a testament to timeless elegance and modern luxury. With a length overall of 44.20 meters (145 feet) and a beam of 8.05 meters (26 feet 5 inches), this vessel offers ample space and comfort. The yacht's maximum draft is 2.90 meters (9 feet 7 inches), allowing for smooth navigation through various waters.

The yacht's hull is crafted from durable steel, while the deck is elegantly finished with teak, contributing to its robust yet sophisticated design. With a tonnage of 338, this vessel is both substantial and stable. It is powered by two Caterpillar C32 Acert engines, each delivering 708 kW (950 HP), enabling a cruising speed of 10 knots (12 MPH) and a maximum speed of 14 knots (16 MPH). The impressive range of 5000 nautical miles ensures that long voyages can be undertaken with ease.

Inside, the yacht accommodates guests in six luxurious staterooms, attended by a dedicated crew of nine, ensuring a personalized and attentive service. The interior design, crafted by the Laura Pomponi Studio, exudes sophistication and comfort, while the exterior design by Arthur de Fever complements the yacht's graceful lines and timeless appeal.

Registered under the flag of the Isle of Man, this yacht meets the rigorous standards of Bureau Veritas Hull & Machinery classification, ensuring safety and reliability. Whether you are cruising leisurely or embarking on an adventurous journey, this yacht offers an unparalleled experience of luxury and performance.

Machinery

The yacht is powered by robust main engines, specifically the CATERPILLAR 3412 DI-TA, which are brand new and promise reliable performance. These engines are paired with Reintjes WAF4040 gearboxes featuring a reduction ratio of 4:1, ensuring smooth and efficient power transmission. The propulsion system is completed with 5-blade C-Foil Type AB-2 propellers, each with a diameter of 1.5 meters, designed to enhance the vessel's maneuverability and speed.

Electricity on board is generated by two Caterpillar C6.6 ACERT generators, each providing an output of 100 kW at 400 volts and 50Hz. These generators are also new, ensuring uninterrupted power supply. The yacht is equipped with a 70 kW Magnus shore power system, complete with a frequency converter, to maintain electrical systems when docked.

For climate control, the yacht features a Dometic fan coil air conditioning system, supported by three Dometic chiller units, ensuring a comfortable environment in all weather conditions. The vessel's other machinery includes FCI Neptune NH55263S water makers, capable of producing 22,000 liters (5,812 US gallons) of fresh water per day, and a Quantum QP20 fin stabilizer system with zero-speed capability at anchor, providing stability and comfort.

The yacht is equipped with a 75-kW electrical bow thruster from Magnus Marine, offering variable speed for precise maneuvering. The steering system is a Wills-Ridley electro-hydraulic twin ram system, ensuring responsive and reliable control. Additional systems include a Westfalia fuel separator, an RWO bilge water system, and a comprehensive fresh water system. The yacht also features a lube oil capacity of 900 liters (238 US gallons) and a waste oil capacity of 190 liters (50 US gallons), ensuring efficient and environmentally responsible operation.

Communication systems

The yacht is equipped with advanced communication systems to ensure seamless connectivity and safety at sea. It features the Sailor 6110 SAT C LRIT & SSAS, a satellite communication system that provides reliable long-range identification and tracking, as well as ship security alert capabilities. This ensures that the vessel remains connected and secure, no matter where it is in the world.

For onboard communication, the yacht is fitted with a batteryless telephone system, offering a dependable means of communication without the need for external power sources. This system is designed to function efficiently in all conditions, providing peace of mind to both crew and guests.

Additionally, the yacht is equipped with VHF communication systems, including an Icom unit and two Tron handheld devices. These VHF systems are essential for short-range communication, ensuring that the yacht can maintain contact with other vessels and coastal stations, enhancing both safety and operational efficiency.

Navigation systems

The yacht is equipped with a comprehensive suite of navigation systems, ensuring precise and reliable guidance across the seas. At the heart of its navigation capabilities are the Simrad radars, which provide exceptional situational awareness and help in detecting other vessels and obstacles, even in challenging conditions. Complementing this is the Anschutz gyrocompass, which offers accurate heading information, crucial for maintaining course stability.

For traditional navigation, the yacht features a Furuno magnetic compass, providing a reliable backup to electronic systems. The Anschutz autopilot system further enhances navigational efficiency by allowing for automated

steering, reducing the workload on the crew and ensuring smooth sailing.

Depth measurement is handled by a Simrad depth sounder, which delivers precise readings of the water beneath the vessel, essential for safe navigation in shallow areas. The yacht's GPS system, provided by Saab, ensures accurate positioning and route planning, vital for long-distance voyages.

Additionally, the yacht is equipped with a Simrad wind and speed log, offering real-time data on wind conditions and vessel speed. This information is crucial for optimizing sailing performance and ensuring a safe and enjoyable journey. Together, these advanced navigation systems provide the yacht with the tools needed for confident and efficient travel on the open water.

Entertainment systems

The yacht boasts an impressive array of entertainment systems designed to provide an unparalleled onboard experience. Central to its video capabilities is the All Suites Plex Video & Music server, supported by Synology storage media, ensuring a vast library of content is readily available for guests. Televisions are strategically placed in the salons, while each cabin is equipped with an iPad Pro, allowing for personalized viewing and entertainment options.

The audio experience on board is equally exceptional, featuring a combination of Sonos and Bose speakers that deliver high-quality sound throughout the yacht. This setup ensures that whether you are hosting a lively gathering or enjoying a quiet evening, the audio quality is always superb.

The yacht's IT infrastructure is robust, featuring a Ubiquiti network that provides seamless connectivity. This is complemented by twin high-gain Axxess Marine 44 antennas and twin VSAT 1M systems (Sailor 900), ensuring reliable and high-speed internet access even when at sea. Together, these entertainment and IT systems create a luxurious and connected environment, enhancing the overall experience for everyone on board.

Galley & laundry equipment

The yacht is equipped with a state-of-the-art galley and laundry facilities, ensuring that both guests and crew enjoy the highest standards of convenience and efficiency. In the main galley, the cooking equipment is provided by Hakvoort Professional, known for its exceptional quality and performance. The refrigeration and freezer needs are met by Gram, while dishwashing is handled by a reliable Miele dishwasher, ensuring that all culinary operations run smoothly.

The crew galley and mess area are equally well-equipped, featuring a Miele dishwasher and a Miele refrigerator/freezer, providing the crew with the necessary tools to maintain high standards of service and comfort.

Additional galley equipment includes a Houno Combislim combi oven, which offers versatile cooking options, a Liebherr wine cooler to keep your finest selections at the perfect temperature, and Hoshizaki ice makers to ensure a constant supply of ice for beverages and entertaining.

The yacht's laundry facilities are designed to handle the demands of life at sea, featuring two Miele PW6065 washers and two Miele PT7136 dryers in the main laundry area. This setup ensures that all laundry needs are met efficiently, allowing both guests and crew to enjoy fresh and clean linens and clothing throughout their journey.

Deck equipment

The yacht is outfitted with a range of high-quality deck equipment, ensuring both functionality and safety during maritime operations. At the heart of its anchoring system is the Thomas Reid anchor windlass, an original piece that has been meticulously rebuilt to maintain its reliability and performance. This ensures secure anchoring in various conditions, providing peace of mind during your voyages.

For additional mooring capabilities, the yacht features Muir warping capstans, which facilitate smooth and efficient handling of lines, enhancing the vessel's docking and maneuvering capabilities. The deck is also equipped with a Nautical Structures boat crane, capable of lifting up to 2 tonnes at a 6-metre reach. This crane is MCA rescue approved, underscoring its robustness and reliability in critical situations.

Completing the deck equipment is a Hydromar passerelle, which provides safe and convenient access to and from the yacht. This sophisticated gangway system ensures that guests and crew can embark and disembark with ease, adding to the overall comfort and luxury of the yacht experience. Together, these deck systems contribute to a seamless and enjoyable maritime journey.

CONTACTS

Shestakov Yacht Sales is a brokerage company specializing in the sale and service of yachts worldwide. The company offers services for buying and selling both new and used motor yachts, sailing vessels, and luxury superyachts. They also provide yacht registration, insurance, technical maintenance, crew selection, and charter organization services across the U.S., Canada, Latin America, the Caribbean, and the Bahamas.

The founder and lead broker of the company is Andrey Shestakov, a licensed and certified expert with extensive experience in marine engineering and shipbuilding.

The company has an extensive network of partnerships with major yacht manufacturers worldwide and provides services in multiple languages, including Russian, Ukrainian, Spanish, and English. The office is in Dania Beach, Florida, USA.

For more information and to view available yachts, you can visit the company's official website: <https://shestakovyachtsales.com>

Contact details

Phone: +1(954)274-4435

Email: andrey@shestakovyachtsales.com

Address



1380 Weeping Willow Way, Hollywood,
Florida 33019