

SPACELINE 150 - ULTIMATE CATAMARANS



Builder: [ULTIMATE CATAMARANS](#)

LOA: 149' 0" (45.60 m)

Year Built: 2027

Beam: 50' 0" (15.50 m)

Model: Spaceline 150

Min Draft: 6' 7" (2 m)

Price: - Subject to change.

Max Draft: 7' 5" (2.25 m)

[See full listing on our website](#)

Location: Sibenik, Croatia

Cruising Speed: 12 Knots (13.81 MPH)

Max Speed: 15 Knots (17.26 MPH)

TABLE OF CONTENTS

OVERVIEW	3
SPECIFICATIONS	7
Basic Information	7
Dimensions	7
Speed, Capacities and Weight	8
Accommodations	8
Hull and Deck Information	8
Engine Information	9
GALLERY	10
DETAILED DESCRIPTION	16
CONTACTS	19

OVERVIEW

Where Timeless Elegance Meets Cutting-Edge Innovation: The Spaceline 150 Superyacht Catamaran

The Spaceline 150 stands as the epitome of luxury catamaran design, offering an exceptional fusion of spaciousness, innovation, and state-of-the-art technology. With nearly 400 square meters of lavish guest living space and over 1,200 square meters of total usable area, the Spaceline 150 delivers all the benefits of an 80-meter-plus monohull superyacht. It is meticulously crafted for discerning owners who demand the highest standards of luxury, performance, and customization.

Building on the solid and dependable technical foundation of the Spaceline series, the Spaceline 150 elevates superyacht construction to new heights. Its aluminum framework, with a frame spacing of just 50 cm, and a highly efficient hybrid propulsion system ensure unmatched stability, performance, and eco-friendliness. The hybrid system features solar panels and battery packs, enabling full-electric operation while at anchor, resulting in zero emissions, minimal generator use, and up to 70% lower fuel consumption at 12 knots compared to monohull superyachts of similar guest interior size.

Unmatched Luxury and Features

The Spaceline 150 offers the kind of space, comfort, and innovation typically associated with 80-meter superyachts. Guest cabins are strategically located on the main deck, each exceeding 35 square meters and featuring private balconies. The owner has the option to include a full private owner's deck behind the bridge, ensuring unparalleled privacy and luxury, in addition to the lavish 80 square meter full-beam owner's cabin on the main deck.

This superyacht boasts a ceiling height of 220 cm (NBA player-approved) throughout, with super king-size beds measuring 200 cm by 220 cm as standard. Guests can revel in panoramic views from their cabins, with all

systems designed to enhance comfort and convenience. The fully enclosed bridge, complete with a captain's cabin directly behind, guarantees complete privacy for guests by separating living areas from operational zones.

For outdoor enjoyment, the Spaceline 150 features expansive exterior spaces, including the optional addition of:

A Pool: Positioned on the sundeck or beneath the helipad, providing relaxation and leisure opportunities.

A Helicopter Hangar: For secure and weatherproof storage of your helicopter, enhancing long-range cruising capabilities.

Weather-Tight Shell Doors: The area beneath the helipad can be fully enclosed with optional shell doors, creating a versatile, weatherproof space that can serve as a hangar, party deck, or additional storage for toys and tenders. The heli deck can also function as a party or lounge area, with the space below the helideck available for further guest accommodations.

The yacht's 5-meter-high bow ensures exceptional stability and safety, facilitating seamless global exploration and the ability to navigate rough seas with ease. Key systems are fully redundant, ensuring reliability and safety even on extended voyages. Additionally, the hulls include spacious crew quarters, a generous crew mess, and ample storage and service areas, allowing for autonomous cruising for extended periods.

Future-Ready and Eco-Conscious

The Spaceline 150 is equipped with a hybrid propulsion system designed for the future. Solar panels and batteries enable electric operation in marinas or at anchor, with the option to incorporate fuel cell technology for enhanced sustainability. The yacht boasts a cruising range of 3,500 nautical miles at 12 knots as standard, with upgrades available to extend this range to 5,000 nautical miles.

Key Features and Unique Selling Points (USPs):

Aluminum Construction: Built with a frame spacing of 50 cm for maximum durability and stability.

Hybrid Propulsion System: Features rooftop exhaust, solar panels, and battery packs for a fume-free, quiet, and efficient experience.

Spacious Guest Cabins: The largest on the market (35 sqm+), all located on the main deck with private balconies.

High Ceilings: At least 220 cm in all areas, providing a spacious, open feel.

Super King-Size Beds: Measuring 200 cm x 220 cm for unmatched comfort.

Optional Pool, Helicopter Hangar, and Weather-Tight Shell Doors: Flexible features that enhance the yacht's versatility and usability.

Low Operational Costs: 70% lower fuel consumption at 12 knots compared to monohull superyachts with the same guest interior space.

Ocean-Ready: Equipped with a 5-meter-high bow and designed for global exploration with full system redundancy.

Customizable Design: Both the interior and exterior layouts can be fully tailored to suit the owner's preferences, with a bespoke, one-of-a-kind interior design included as standard.

Built for Long Autonomy: Extensive storage and service areas allow for long-term cruising without the need for constant resupply.

Proven Quality: Crafted by ISKRA Shipyard in Sibenik, Croatia, with over 130 aluminum catamarans delivered to the highest North European standards.

Value Comparison to Monohull Superyachts

The Spaceline 150 offers the space and luxury of an 80-meter monohull superyacht, featuring expansive interior and exterior areas, but at a significantly lower price point and with drastically reduced operating costs.

The Spaceline 150 is the perfect fusion of timeless design, advanced technology, and unparalleled luxury. With its unique features, spacious layout, and customizable options, this superyacht is the ultimate choice for discerning

clients seeking the best in performance, comfort, and sustainability.

Explore yacht sales in the current boat location and discover how the Spaceline 150 can redefine your yachting experience. The linked 3D model showcases the new Timeless design, which is also available for all other Spaceline catamarans, including the Spaceline 88T as an example.

SPECIFICATIONS

Basic Information

Category:
Motor yachts

Year Built:
2027

Sub category:
Cruisers

Country:
Croatia

Model Year:
2027

Dimensions

LOA:
149' 0" (45.60 m)

Beam:
50' 0" (15.50 m)

Min Draft:
6' 7" (2 m)

Max Draft:
7' 5" (2.25 m)

Speed, Capacities and Weight

Cruise Speed:

12 Knots (13.81 MPH)

Water Capacity:

2.64 Gallons

Max Speed:

15 Knots (17.26 MPH)

Fuel Capacity:

12.42 Gallons

Gross Tonnage:

800 Pounds

Accommodations

Sleeps:

12

Crew Cabin:

7

Total Heads:

6

Crew Berths:

12

Hull and Deck Information

Hull Material:

Aluminum Yachts

Hull Designer:

ULTIMATE CATAMARANS

Deck Material:

Aluminum

Interior Designer:

Laura Pomponi, Luxury Projects

Hull Configuration:

Catamaran

Engine Information

Engines:

4

Engine Type:

Inboard

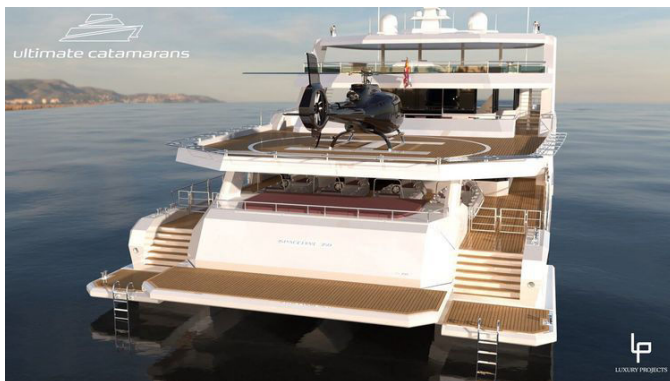
Manufacturer:

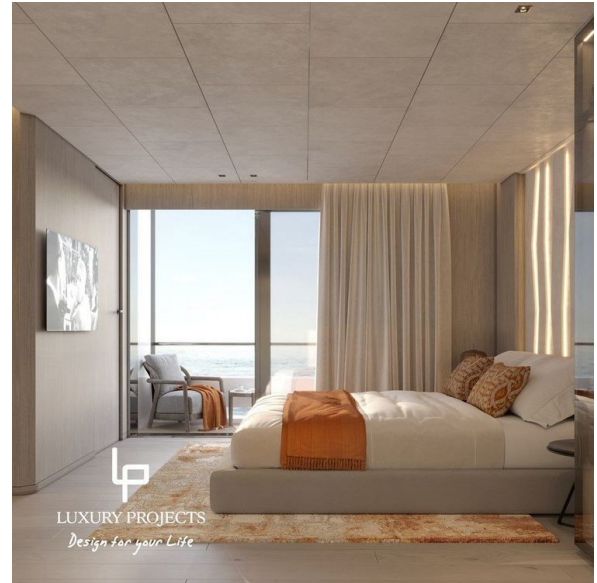
Caterpillar

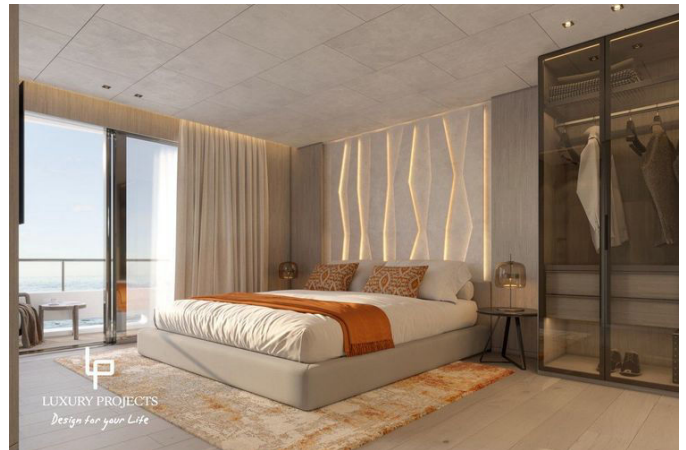
Fuel Type:

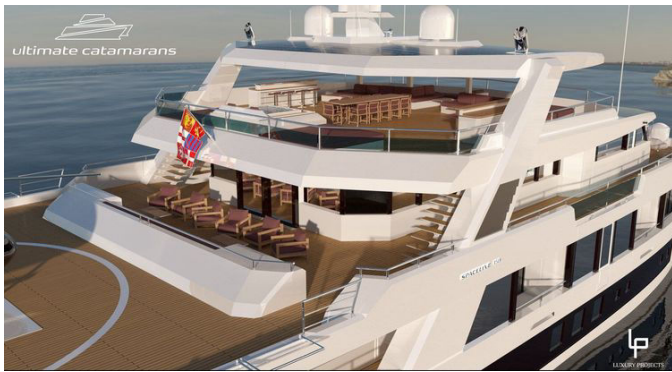
Diesel/Electric

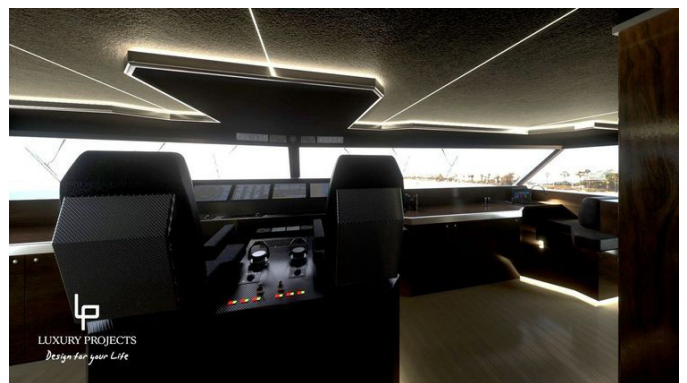
GALLERY

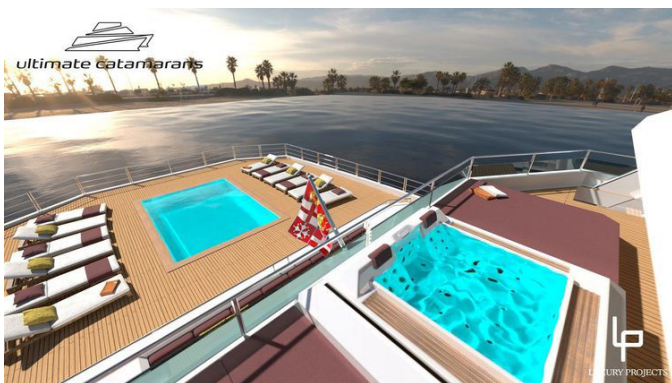
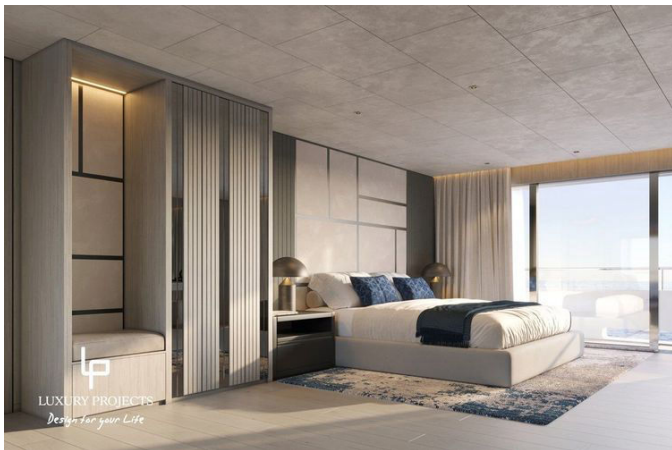












DETAILED DESCRIPTION

Section name

The Spaceline 150 is where classic elegance converges with modern innovation, offering an exceptional blend of space, cutting-edge technology, and luxury. This superyacht catamaran epitomizes the pinnacle of luxury catamaran design, featuring nearly 400 square meters of opulent guest interior space and over 1,200 square meters of total usable area. It provides all the advantages of an 80-meter-plus monohull superyacht, catering to discerning clients who demand the highest standards of luxury, performance, and customization.

Building on the solid and proven technical foundation of the Spaceline series, the Spaceline 150 elevates superyacht construction to new heights. Its aluminum construction, with frame spacing of just 50 cm, and highly efficient hybrid propulsion system offer unmatched stability, performance, and sustainability. The hybrid propulsion includes solar panels and battery packs, allowing for full-electric operation at anchor with no emissions, minimal generator usage, and up to 70% lower fuel consumption at 12 knots compared to monohull superyachts of the same guest interior size.

The Spaceline 150 offers the kind of space, comfort, and innovation typically reserved for 80-meter superyachts. Guest cabins, all located on the main deck, each measure 35 square meters or more and include private balconies. The owner can choose to include a full private owner's deck behind the bridge, offering unmatched privacy and luxury, in addition to the luxurious 80 square meter full beam owner's cabin on the main deck.

This superyacht features a ceiling height of 220 cm throughout, ensuring even NBA players can move comfortably, and super king-size beds measuring 200 cm by 220 cm as standard. Guests can enjoy panoramic views from their

cabins, with all systems designed to maximize comfort and convenience. The fully enclosed bridge, complete with a captain's cabin located directly behind, ensures complete privacy for guests by separating guest areas from operational zones.

For outdoor living, the Spaceline 150 offers expansive exterior areas, including the optional addition of a pool located on the sundeck or below the helipad, providing relaxation and leisure opportunities. A helicopter hangar offers secure and weatherproof storage for your helicopter, enhancing long-range cruising capabilities. Weather-tight shell doors can fully enclose the area below the helipad, creating a versatile space that can serve as a hangar, party deck, or additional storage for toys and tenders. The heli deck can also be used as a party or lounge area, and the area below can be closed with shell doors to create a weather-tight area or provide another 150 square meters of guest interior space.

The yacht's 5-meter-high bow ensures superior stability and safety, allowing for seamless global exploration and the ability to handle rough weather with ease. Key systems are fully redundant, ensuring reliability and safety even on long voyages. Additionally, the hulls include large crew quarters, a spacious crew mess, and extensive storage and service areas, allowing for autonomous cruising for extended periods.

The Spaceline 150 is equipped with a hybrid propulsion system designed for the future. Solar panels and batteries allow for electric operation in marinas or at anchor, with the option to add fuel cell technology for even greater sustainability. The yacht has a cruising range of 3,500 nautical miles at 12 knots as standard, with upgrades available to extend this range even further to 5,000 nautical miles.

The Spaceline 150 is built with aluminum construction, featuring a frame spacing of 50 cm for maximum durability and stability. Its hybrid propulsion system includes rooftop exhaust, solar panels, and battery packs for a

fume-free, quiet, and efficient experience. The spacious guest cabins are the largest on the market, all located on the main deck with private balconies. High ceilings of at least 220 cm in all areas provide a spacious, open feel, while super king-size beds measuring 200 cm by 220 cm offer unmatched comfort. Optional features such as a pool, helicopter hangar, and weather-tight shell doors elevate the yacht's versatility and usability. With 70% lower fuel consumption at 12 knots compared to monohull superyachts with the same guest interior space, the Spaceline 150 offers low operational costs.

Designed for global exploration, the yacht is equipped with a 5-meter-high bow and full system redundancy. Its customizable design allows both the interior and exterior layouts to be fully tailored to suit the owner's taste, with a bespoke, one-of-a-kind interior design included as standard. Built for long autonomy, the yacht features extensive storage and service areas for long-term cruising without the need for constant resupply. Proven quality is assured, as it is built by ISKRA Shipyard in Sibenik, Croatia, with over 130 aluminum catamarans delivered to the highest North European standards. The Spaceline 150 provides the space and luxury of an 80-meter monohull superyacht, including expansive interior and exterior areas, but at a significantly lower price point and with drastically reduced running costs. It is the perfect blend of timeless design, advanced technology, and unmatched luxury. With its unique features, spacious layout, and customizable options, this superyacht is the ultimate choice for discerning clients looking for the best in performance, comfort, and sustainability. Contact us today to learn more about the Spaceline 150 and how it can redefine your yachting experience. The linked 3D model showcases the new timeless design, which is also available for all other Spaceline catamarans, with the Spaceline 88T as an example.

CONTACTS

Shestakov Yacht Sales is a brokerage company specializing in the sale and service of yachts worldwide. The company offers services for buying and selling both new and used motor yachts, sailing vessels, and luxury superyachts. They also provide yacht registration, insurance, technical maintenance, crew selection, and charter organization services across the U.S., Canada, Latin America, the Caribbean, and the Bahamas.

The founder and lead broker of the company is Andrey Shestakov, a licensed and certified expert with extensive experience in marine engineering and shipbuilding.

The company has an extensive network of partnerships with major yacht manufacturers worldwide and provides services in multiple languages, including Russian, Ukrainian, Spanish, and English. The office is in Dania Beach, Florida, USA.

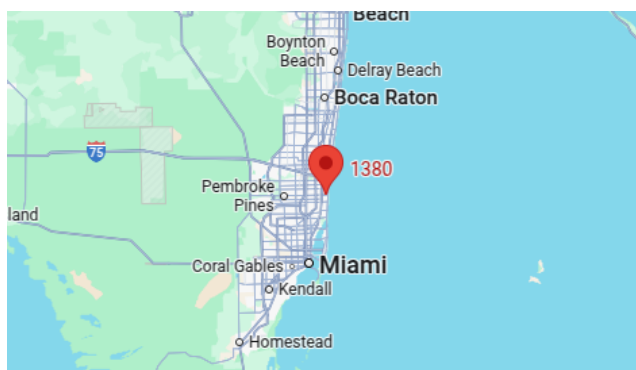
For more information and to view available yachts, you can visit the company's official website: <https://shestakovyachtsales.com>

Contact details

Phone: +1(954)274-4435

Email: andrey@shestakovyachtsales.com

Address



1380 Weeping Willow Way, Hollywood,
Florida 33019