



MISTRESS - BENETTI



Builder: [Benetti](#)

LOA: 151' 0" (46 m)

Year Built: 1991

Beam: 29' 0" (8.82 m)

Model: N/A

Min Draft: 10' 6" (3.21 m)

Price: \$5,143,933.07 USD Subject to change.

Max Draft: 10' 6" (3.21 m)

[See full listing on our website](#)

Location: Gold Coast, Australia

Cruising Speed: 12 Knots (13.81 MPH)

Max Speed: 18 Knots (20.71 MPH)

If you would like to buy a yacht **MISTRESS - BENETTI** or would like help answering any questions concerning purchasing, selling, or chartering a yacht, please call **+1(954)274-4435** or click here on <https://shestakovyachtsales.com>

TABLE OF CONTENTS

OVERVIEW 3

SPECIFICATIONS 4

 Basic Information 4

 Dimensions 4

 Speed, Capacities and Weight 5

 Accommodations 5

 Hull and Deck Information 5

 Engine Information 6

GALLERY 7

DETAILED DESCRIPTION 15

CONTACTS 17

OVERVIEW

Presenting the exquisite 1990 Benetti 46M superyacht 'Mistress,' a true gem now available for yacht sale in Australia. The main salon invites you in with its timeless elegance, featuring a palette of warm yellows and rich golds that radiate sophistication. Here, two spacious sofas and three stylish armchairs provide generous seating for guests to mingle, all while large curtained windows allow natural light to flood the area, enhanced by the soft illumination of lamps and ceiling fixtures. Just beyond the salon, a beautifully appointed formal dining space awaits, perfect for intimate dinners where up to eight guests can savor culinary delights in an atmosphere of luxury.

As you explore the interior of MISTRESS, you will encounter a world of exceptional craftsmanship and lavish details. Every inch is adorned with unique and opulent finishes, including the master bathroom, which showcases Porter Gold marble—a rare treasure sourced from Italy and Corsica, celebrated for its striking black tones interwoven with glimmering gold veins.

Make your way to the upper deck, where the sky lounge serves as a sanctuary for relaxation and indulgence. A sumptuous seating area, embellished with exquisite furnishings, invites guests to unwind in style, while a chic bar stands ready to mix the finest cocktails against a backdrop of classic paneling.

Outside, alfresco dining awaits on an elegant table that accommodates up to ten, offering breathtaking views of the surrounding waters, with additional seating at the aft for guests to enjoy the refreshing sea breeze after a delightful meal. Whether you are looking to host sophisticated gatherings or enjoy serene moments of tranquility, MY MISTRESS guarantees an unforgettable experience filled with elegance and charm. Explore yacht sales in the current boat location and seize the opportunity to buy a yacht that embodies luxury and refinement.

SPECIFICATIONS

Basic Information

Category:
Motor yachts

Year Built:
1991

Sub category:
Motor Yacht

Country:
Australia

Model Year:
1991

Dimensions

LOA:
151' 0" (46 m)

Beam:
29' 0" (8.82 m)

Min Draft:
10' 6" (3.21 m)

Max Draft:
10' 6" (3.21 m)

Speed, Capacities and Weight

Cruise Speed:

12 Knots (13.81 MPH)

Water Capacity:

2905.89 Gallons

Max Speed:

18 Knots (20.71 MPH)

Fuel Capacity:

11769.66 Gallons

Gross Tonnage:

411 Pounds

Accommodations

Crew Cabin:

4

Crew Berths:

10

Hull and Deck Information

Hull Material:

Steel Yachts

Hull Designer:

Benetti

Deck Material:

Steel

Interior Designer:

Zuretti Interior Design

Hull Configuration:

Full Displacement

Engine Information

Engines:

2

Engine Type:

Inboard

Manufacturer:

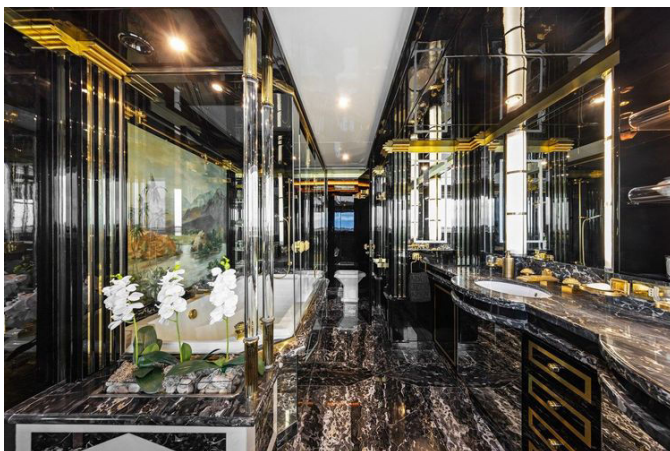
MTU

Fuel Type:

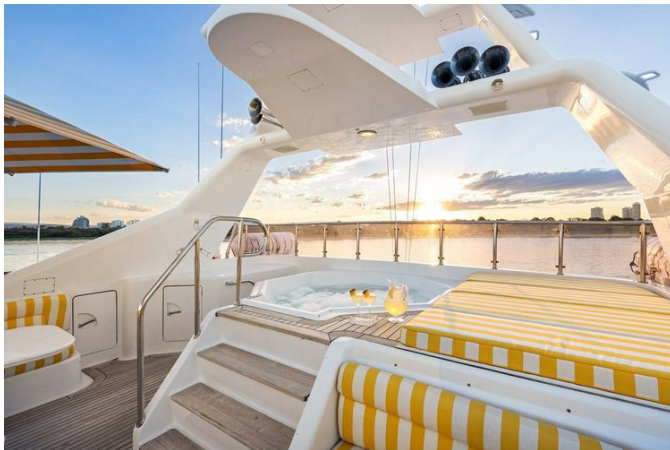
Diesel

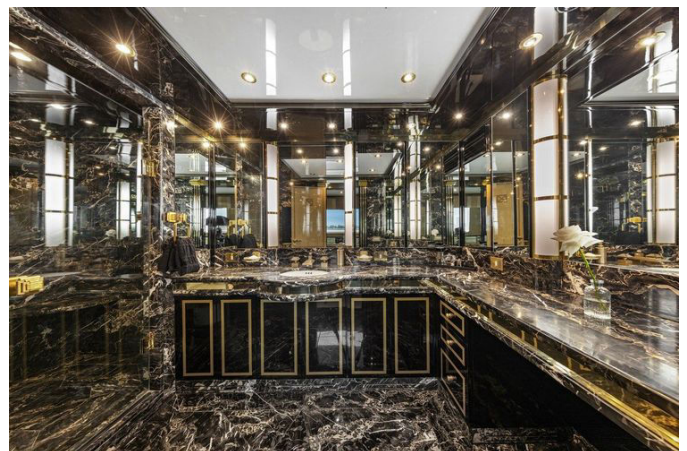
GALLERY

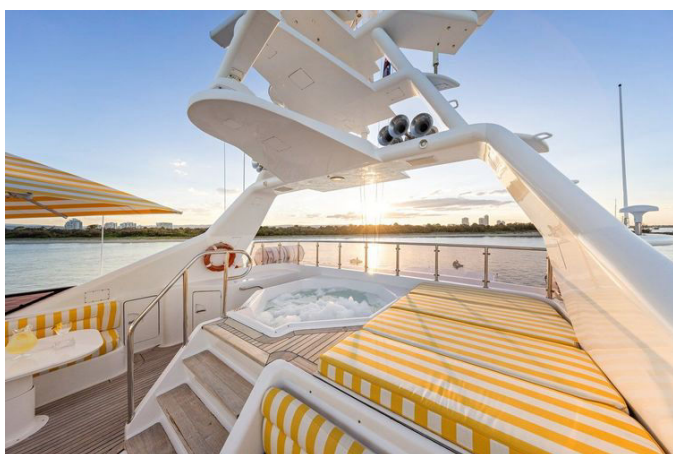
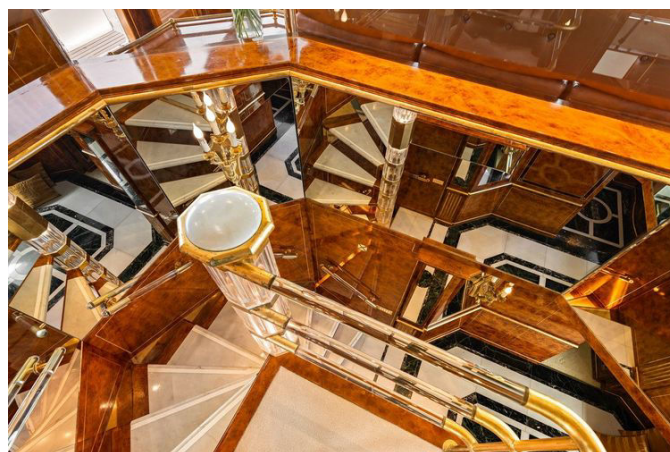


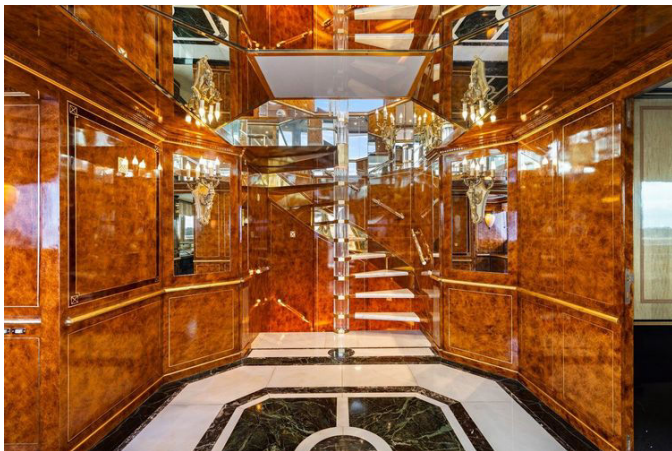
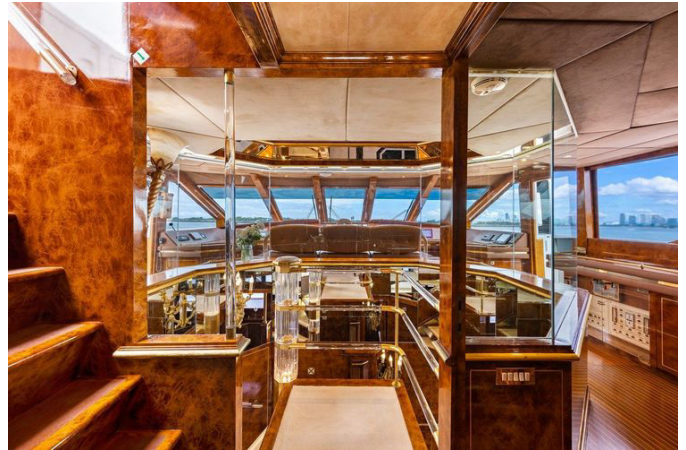














DETAILED DESCRIPTION

Section name

Impeccably Reimagined: Benetti 46M 'MISTRESS' is a testament to the art of transformation, having undergone a stunning 2024 refit that has elevated this 1991 superyacht to modern luxury standards. Fresh from this transformative refit, 'MISTRESS' now presents in like-new condition, boasting a full hull and superstructure repaint, renewed systems, and upgraded amenities, all while retaining her timeless Stefano Natucci-designed charm. Stepping aboard 'MISTRESS' is an invitation to experience true opulence. The main salon envelops guests in hues of yellow and gold, radiating warmth and refinement. Two expansive sofas and three armchairs are positioned to welcome intimate conversations, with natural light streaming through large windows. Soft lighting adds to the ambiance, creating a serene retreat. Beyond the salon, the formal dining area accommodates up to eight guests, providing the perfect setting for unforgettable culinary experiences.

'MISTRESS' showcases luxurious materials and bespoke finishes throughout. A standout feature is the master bathroom, adorned with rare porte gold marble sourced from Italy and Corsica. This exquisite stone, with its striking black and gold veins, embodies the yacht's dedication to unparalleled detail. The upper deck sky lounge offers a mix of relaxation and indulgence, featuring ornate furnishings, a glamorous bar, and classic paneling. Outside, an alfresco dining area seats up to ten guests, offering panoramic views of the seascape. Aft, spacious seating provides the perfect spot to unwind and enjoy the sea breeze. The 2024 refit has seen significant enhancements across the yacht. The flybridge spa has been fully repainted and sealed, with new Perspex, a new compass, and various upgrades including new teak steps to the spa and a freshly painted entertaining area. The bridge deck has been revitalized with

new non-skid paint, door latches, and outdoor lights, while the main deck features a new anchor pole and light, serviced anchor winches, and a new drainage system. The transom boasts new underwater lights and a newly painted passerelle door. The hull, made of steel with an aluminum superstructure, has been meticulously treated to remove corrosion and prevent future issues, with new anodes and cathodes installed.

In the engine room, new mixer and exhaust tubes, sea chest valves, and manifold valves have been fitted, alongside a comprehensive treatment and painting of various tanks and bilge areas. The yacht is ready for adventure, equipped with NIAD stabilizers, a 44,000-liter fuel capacity, and a range of over 2,500 nautical miles. Whether hosting elegant gatherings or enjoying serene escapes, this iconic Benetti promises an unparalleled yachting experience.

CONTACTS

Shestakov Yacht Sales is a brokerage company specializing in the sale and service of yachts worldwide. The company offers services for buying and selling both new and used motor yachts, sailing vessels, and luxury superyachts. They also provide yacht registration, insurance, technical maintenance, crew selection, and charter organization services across the U.S., Canada, Latin America, the Caribbean, and the Bahamas.

The founder and lead broker of the company is Andrey Shestakov, a licensed and certified expert with extensive experience in marine engineering and shipbuilding.

The company has an extensive network of partnerships with major yacht manufacturers worldwide and provides services in multiple languages, including Russian, Ukrainian, Spanish, and English. The office is in Dania Beach, Florida, USA.

For more information and to view available yachts, you can visit the company's official website: <https://shestakovyachtsales.com>

Contact details

Phone: +1(954)274-4435

Email: andrey@shestakovyachtsales.com

Address



1380 Weeping Willow Way, Hollywood,
Florida 33019