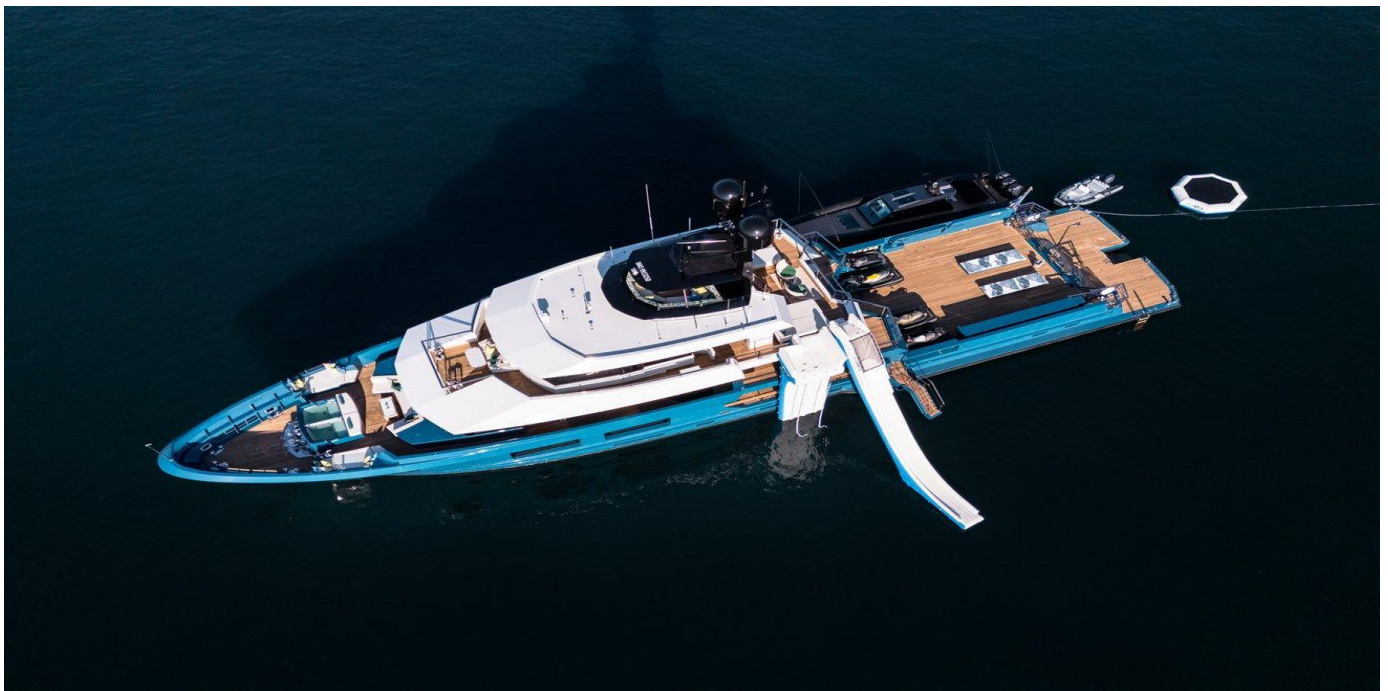


KING BENJI - DUNYA YACHTS



Builder: [DUNYA YACHTS](#)

LOA: 154' 0" (46.94 m)

Year Built: 2024

Beam: 30' 0" (9.14 m)

Model: N/A

Max Draft: 32' 10" (10 m)

Price: \$33,051,987.91 USD Subject to change.

Cruising Speed: 12 Knots (13.81 MPH)

[See full listing on our website](#)

Location: N/A, Saint Martin

Max Speed: 14 Knots (16.11 MPH)

TABLE OF CONTENTS

OVERVIEW	3
SPECIFICATIONS	5
Basic Information	5
Dimensions	5
Speed, Capacities and Weight	6
Accommodations	6
Hull and Deck Information	6
Engine Information	7
GALLERY	8
DETAILED DESCRIPTION	13
CONTACTS	22

OVERVIEW

A heritage-rich expedition superyacht rarely offered on the open market, KING BENJI announced her arrival in dramatic fashion—gracing the cover of BOAT International at her March 2024 debut and later claiming Best Interior Design at the 2025 Design & Innovation Awards—achievements that are exceptional in the prized 45–50m superyacht category and mark her as one of the most celebrated contemporary explorer yachts.

Conceived by Greg Marshall as a modern refinement of his 45m explorer Big Fish, KING BENJI places sociable life at the heart of her design, centering gatherings around an elevated teppanyaki counter that uncovers sweeping vistas. Ten distinct dining settings offer variety and intimacy, while a lofty crow's nest delivers true 360-degree horizons and deep window bays compose cinematic seascapes. The private owner's deck runs fore and aft to encourage natural cross-ventilation and introduces outdoor luxuries—a rain shower and Japanese-inspired hot-and-cold plunge pools that look out over the bow—defining hallmarks of a polished expedition yacht ethos.

A capacious aft deck, equipped with a 10-ton crane, converts effortlessly from a convivial lounge to an adventure hub, deploying a 12m Nor-Tech tender and an extensive watersports inventory including jet skis, eFoils, Seabobs, scuba and sportfishing equipment, towables, floating platforms, a giant waterslide and a climbing frame—everything required for long-range bluewater cruising and off-the-grid recreation.

Interiors by Mark Tucker's Design Unlimited weave timber, leather and bamboo into an inviting, tactile atmosphere. Full-height, threshold-free sliding doors drench the main saloon and sky lounge in daylight and dissolve the divide between inside and deck for seamless indoor–outdoor living. Guest staterooms are detailed with nautical character and flexible arrangements, with cabins convertible from twin to king, rendering KING BENJI equally

capable as a private superyacht or a premium charter vessel.

At 47 meters, KING BENJI presents exceptional volume, ocean-crossing range and a versatile layout tailored to both owner use and charter operations. Built with a steel hull and composite superstructure, she combines robust expedition capability and onboard stability with refined onboard life—an outstanding opportunity and a standout in the 45–50m expedition yacht class.

SPECIFICATIONS

Basic Information

Category:
Motor yachts

Year Built:
2024

Sub category:
Expedition Yachts

Country:
Saint Martin

Model Year:
2024

Dimensions

LOA:
154' 0" (46.94 m)

Max Draft:
32' 10" (10 m)

Beam:
30' 0" (9.14 m)

Speed, Capacities and Weight

Cruise Speed:

12 Knots (13.81 MPH)

Water Capacity:

4438 Gallons

Max Speed:

14 Knots (16.11 MPH)

Fuel Capacity:

17738 Gallons

Gross Tonnage:

491 Pounds

Accommodations

Total Heads:

7

Crew Berths:

5

Hull and Deck Information

Hull Material:

Steel Yachts

Hull Designer:

Gregory C. Marshall

Deck Material:

Steel

Interior Designer:

Design Unlimited

Hull Configuration:

Full Displacement

Engine Information

Engines:

2

Engine Type:

Inboard

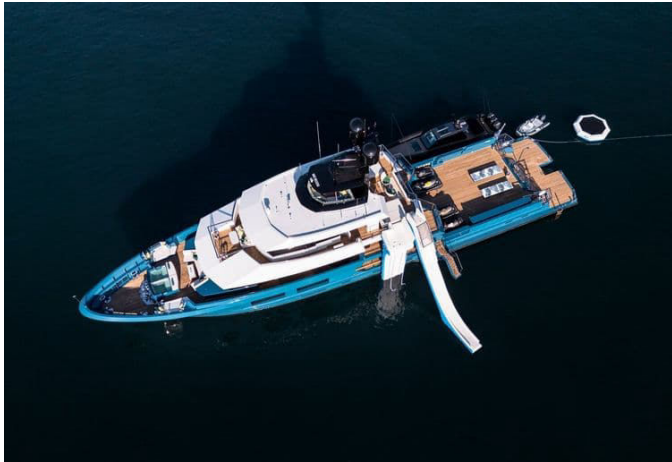
Manufacturer:

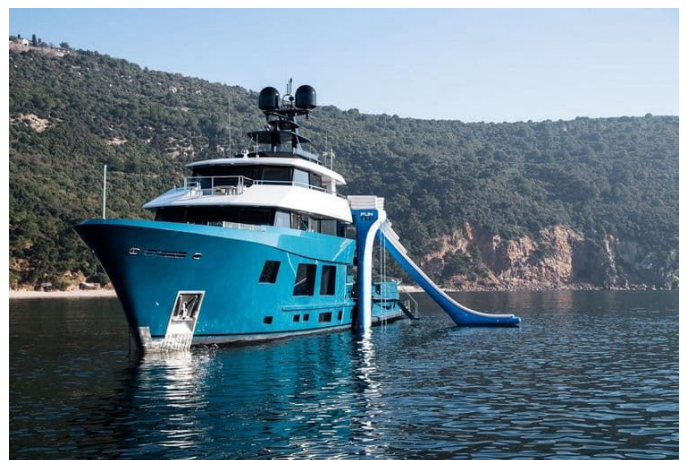
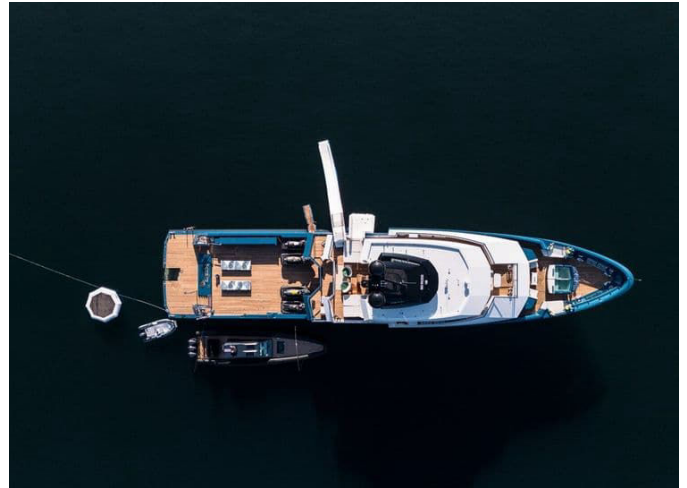
CAT

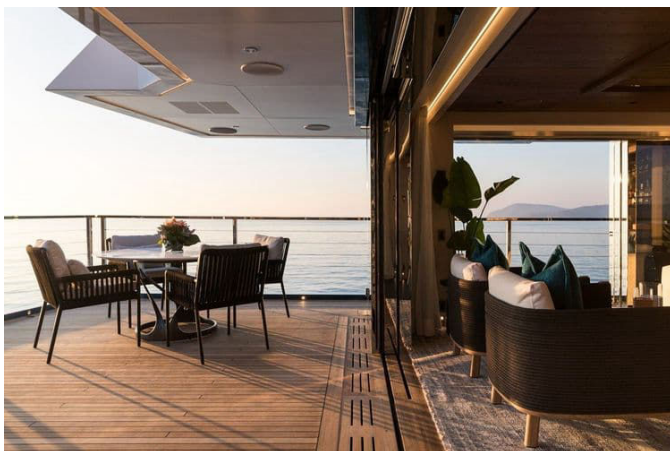
Fuel Type:

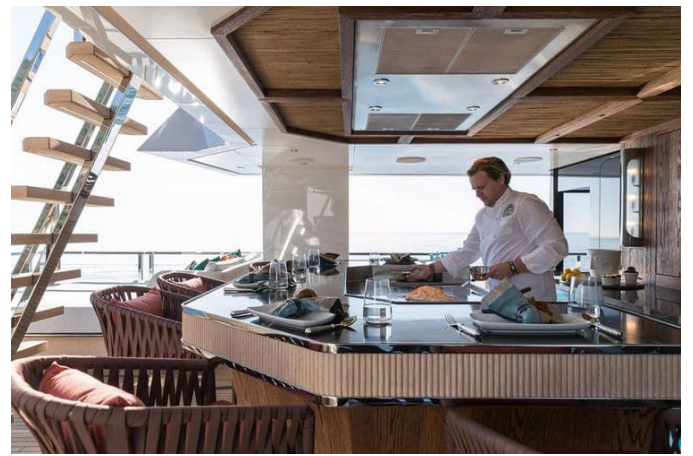
Diesel

GALLERY











DETAILED DESCRIPTION

Principal dimensions & capacities

With an assertive ocean-going stance, the yacht measures 154.20 ft (47.00 m) length overall, carries a broad 30 ft (9.14 m) beam for exceptional interior volume and deck real estate, and draws a capable 10 ft (3.05 m) for confident passagemaking stability; her gross tonnage stands at 491 GT, underscoring generous spaces throughout. Endurance is assured by substantial tankage: fuel capacity totals 17,738 US gallons (67,146 liters) and fresh water 4,438 US gallons (16,800 liters), while high-output watermakers deliver 115 gallons per hour (435 liters per hour) to keep onboard life seamless on long expeditions. Engineering autonomy is completed by dedicated stores for lube oil at 338 gallons/1280 litres and waste oil at 338 gallons/1280 liters, reinforcing true explorer credentials.

Machinery

Propelled by two Caterpillar C32 ACERT diesels delivering 1,218 Hp each, the yacht couples smooth, muscular power with proven reliability; current recorded hours are 2,474 on the port engine and 2,775 on starboard. Electrical generation is triple-redundant via three Northern Lights 99 kW generators, with port at 3,878 hours, starboard at 3,869 hours, and center at 2,199 hours, feeding a 220V/60Hz ship's grid and supported by Master Volt batteries. Shore power flexibility comes courtesy of a Magnus three-phase system compatible with 240/380/440 V (125 Amp), while centralized hydraulics by Naiad Dynamics underpin stabilized, quiet running. Climate control is refined and resilient, combining Heine & Hopman and Dometic air handlers for pinpoint comfort in every zone. Blue Water Desalination watermakers and the Blue Water Desalination fresh water system anchor the yacht's self-sufficiency, with Naiad

Dynamics stabilizers and a Naiad Dynamics bow thruster enhancing seakeeping and maneuverability. Precision handling is assured by a Hydromar steering system, fuel purity by an Alfa Laval separator and filtration train, blackwater is treated by a Head hunter sewage treatment system, and bilge water is polished through RWO Veolia filtration—every element specified for redundancy, endurance, and low operating risk.

Communication systems

Guests and crew remain seamlessly connected anywhere on the globe with Cobham SAT com and Starlink for high-bandwidth connectivity, complemented by an integrated Avaya suite that includes telephone, VSat, cellular phone system, and intercom. Professional-grade backbones extend to Furuno SSB and Furuno VHF, delivering crisp, reliable ship-to-ship and ship-to-shore communications in all conditions.

Navigation systems

A captain's bridge specified for bluewater confidence features Furuno radar, Furuno GPS, Furuno auto pilot, a Furuno depth sounder, Furuno wind/speed log, Furuno Weather Fax, and Furuno Navtex, harmonizing into a cohesive navigation suite. Course integrity is anchored by a Keiki gyrocompass, decision-making is supported by a dedicated Mac ship's computer, and global awareness is further enhanced by Starlink, uniting data and situational insight on passage and at anchor.

Galley & laundry equipment

Designed for five-star hospitality, both the main and crew galleys are fitted with Miele cooking appliances and Miele refrigeration/freezer suites, enabling

simultaneous fine dining and crew service with poise. Shoreside polish is matched onboard by Miele laundry equipment, ensuring a crisp presentation of linens and guest wardrobe throughout every voyage.

Tenders & toys

Adventure unfolds from a thoughtfully curated arsenal: one 14' Novurania tender stands ready for swift transfers, while full scuba gear, a dedicated dive compressor, four air tanks, and four complete sets of dive equipment join an array of snorkeling gear for underwater discovery. On the waterline, the Fun Air collection transforms the sea into a private playground with a slide from the bridge deck (top deck), a toy island, a swimming pool, a trampoline, and a golf island, backed by four Sea Doo RXT 325s and a varied selection of towables for adrenaline-fueled sessions. Elevated culinary theatre arrives via one teppanyaki grill, and the sensation of flight is delivered by two E-Foils and three paddleboards for serene exploration. Rounding out the inventory are comprehensive fishing outfits with two trolling Shimano reels, Hawaiian slings and spearfishing equipment, yoga/Pilates gear, wakeboards, kneeboards, and adult waterskis—every pursuit catered to from sunrise to starlight.

Deck equipment

The deck plan is expedition-ready and guest-focused: the Naiad Dynamics anchor windlass system works in concert with Data aft warping capstans to make short work of anchoring and line handling, while robust Baran anchors are set on 135 m and 165 m chains for secure holding. Heavy-lift capability comes via a 20,000 lb boat crane and davit, complemented by a Hydromar passarelle and a Hydromar swimming platform that streamline boarding and water access. Private resort ambience springs from split plunge pools on the owner's deck, a Jacuzzi, and a full beach club, with adaptable sunshades for the

aft deck ensuring comfort from tropics to temperate climes.

Security equipment

Peace of mind comes built in with an Axis CCTV system and dedicated Axis cameras feeding high-clarity Hatteland monitors, delivering comprehensive situational awareness throughout all guest and crew areas as well as critical technical spaces.

Fire fighting equipment

Safety is engineered to stringent standards with a Consilium fire detection system vigilant across all compartments, an Ultrafog sprinkler network for swift suppression, and Novec 1230 protection specifically safeguarding the galley hood and the machinery space. Portable readiness is completed by strategically placed Pulver fire extinguishers, ensuring rapid response capability.

Safety equipment

Preparedness extends to sea survival with Survitec Zodiac, one Elektro Deniz Rescue Me EPIRB for global distress alerting, Pains Wessex flares for visual signaling, and comprehensive MSOS medical equipment to support professional-level care underway.

Exclusions

The name of the vessel, King Benji, remains reserved by the owner and does not convey with the sale. A 39 Nor Tech is excluded, along with all owners' personal effects; a detailed exclusions schedule is available upon request to fully clarify non-conveyance items.

And importantly:

Available now with no build time and no delays, the yacht has been maintained to an exceptional standard and presents turnkey. A recent yard period, completed at Rybovich Yacht Center on March 9, 2026, underscores diligent stewardship and operational readiness. Further elevating her pedigree, she was awarded Best Interior Design at the 2025 BOAT International Design & Innovation Awards (Motor Yachts 499GT and below, 40 m and above), a distinction that mirrors the sophistication guests feel the moment they step aboard.

Walkthrough

Main Deck

The main salon sets a warmly residential tone within expansive proportions, where an open-plan layout erases boundaries between inside and out. Generous glazing floods the room with natural light and frames the sea as living art, while refined finishes and soft furnishings create an elegant arena for relaxation, sociability, and effortless entertaining. Just forward, the breakfast bar becomes the most natural gathering spot on board—bright, informal, and framed by panoramic windows—perfect for casual dining, morning espresso, or a golden-hour cocktail, a breezy café-style ambiance that invites guests to linger. The open-plan galley, overlooking the bar, fosters easy interaction between guests and crew without compromising service efficiency; large windows elevate the culinary workspace, and a dedicated pantry ensures thoughtful storage and organization for extended cruising and elevated hospitality.

Owner's Deck

Reserved exclusively for the owner, this private sanctuary rises above the main living areas and embraces a tranquil owner's

lounge with peaceful aft views—an ideal setting for quiet work, intimate entertaining, or restorative downtime. The master suite is a true haven: large sliding doors and panoramic windows invite abundant daylight and flow directly to secluded exterior spaces, while the sumptuous ensuite features a generous steam shower cascading seamlessly to a private outdoor shower area—an enveloping, spa-like experience with complete privacy and a direct connection to the sea.

Fore Deck

Forward, a beautifully composed relaxation zone centers on a large plunge pool and multiple seating arrangements. Elevated sightlines deliver panoramic outlooks and pleasing airflow, making this a discreet haven for sunbathing, daytime lounging, or sunset gatherings with unforgettable horizons.

Bridge Deck

The bridge deck is the yacht's social heartbeat, alive with a large TV, generous seating, and an energy tuned for hosting. A showpiece teppanyaki grill anchors the scene to create interactive culinary theatre—ideal for cocktail hours, themed dinners, live cooking demonstrations, and even spirited karaoke nights—transitioning with ease from laid-back afternoons to lively evenings.

Observation Pod (Crow's Nest)

Among her most distinctive signatures, the observation pod offers breathtaking 360-degree views unlike any other vantage on board. Elevated above the decks, it becomes an intimate setting for private dining, quiet reading, and marine life spotting; from sunrise coffee to romantic dinners and dolphin watching in the wake, the crow's nest delivers an unforgettable, highly marketable experiential highlight.

Overview

KING BENJI was purpose-built to meet the demands of serious chartering and world cruising, blending robust

explorer capability—autonomy, stability, and resilience—with the grace and comfort of a luxury yacht. Her generous volume and well-resolved deck plans foster a relaxed, elegant onboard rhythm ideally suited to entertaining, family time, and high-demand charter operations.

Machinery & Systems

The engine

room and technical spaces are laid out for accessibility and redundancy, supporting extended passages with efficient fuel burn and robust onboard management. Excellent maintenance access reduces operational risk and safeguards long-term asset value.

Charter & Investment Appeal

King Benji's

explorer platform, flexible layout, distinctive design language, expansive exterior spaces, and reliable operations make her exceptionally attractive on the charter market. Her size sits in a highly sought-after segment with strong global demand, and for investors she offers compelling resale positioning backed by proven performance and enduring relevance—the most in-demand charter yacht of her size and category, supported by a well-established charter crew.

Construction & classification

A true modern explorer from the keel up, she marries a steel hull for strength and range with an aluminum superstructure for efficiency and stability, all underfoot finished in teak decks that feel as good as they look. Classification is to ABS, affirming international standards of build quality and safety.

Entertainment systems

Entertaining flows effortlessly with Samsung TVs delivering crisp visuals throughout, while a Sonos audio ecosystem wraps every deck and lounge in

rich, responsive sound—ready for cinematic nights, background ambiance, or a dancefloor under the stars.

Interior description & layout

General

Delivered in 2024 as a no-compromise expedition yacht, she is expressly designed to deliver a five-star guest experience both on board and ashore. Bridge deck sun lounges invite languid afternoons, while a six-seat teppanyaki bar turns dining into a performance. A hidden TV disappears behind warm wood paneling for an uncluttered aesthetic, and the crow's nest lounge opens to 360° views. The split galley configuration brings together a dining area, breakfast bar, pantry, and service zone to maintain impeccable flow during guest service and extended passages.

Owner's Area

A private

owner's deck crowns the accommodations, anchored by a master stateroom with a California king bed and a spa-caliber steam rain shower. Port and starboard private terraces extend living outdoors, complemented by a foredeck plunge pool and Jacuzzi, while a private indoor/outdoor lounge with a games table and an owner's aft dining deck set the stage for intimate entertaining.

Guest Accommodation

Below, two VIP staterooms with king

beds are joined by one additional guest stateroom with a king and one guest stateroom with twin beds convertible to a king, all benefitting from large panoramic windows that keep the sea always within view.

Crew

Accommodation

Professional operations are supported by accommodations

for up to 9 crew in 5 cabins, discreetly arranged to maintain guest privacy while

delivering seamless, anticipatory service.

Recent services

Operational readiness is freshly affirmed with antifouling completed, PropSpeed applied for clean, efficient running gear, and all flag state requirements and surveys fully completed—an immaculate handover for the next owner.

For clients looking beyond the usual “white yacht,” she offers:

For owners who look past the ordinary, she answers with three-month autonomous cruising capability and a proven charter track record with a fully booked program. This is a fully equipped, turnkey platform with a ten-ton crane currently accommodating a 39' Nor Tech, an ABS class hull to a Greg Marshall design, and a cache of over 30 inflatable toys. Practicality meets freedom with a touch-and-go helipad on the aft deck and a turnkey operation supported by an experienced team in place, with captain and crew available for the onward buyer. Built for genuine exploration rather than coastal hops, she boasts a 5,000 nm range at 9 knots and a history of four transatlantic crossings. Additional refrigeration, three generators, a waste treatment system, and comprehensive communication systems are all specified for extended exploration—everything you need to go farther, stay longer, and host better.

CONTACTS

Shestakov Yacht Sales is a brokerage company specializing in the sale and service of yachts worldwide. The company offers services for buying and selling both new and used motor yachts, sailing vessels, and luxury superyachts. They also provide yacht registration, insurance, technical maintenance, crew selection, and charter organization services across the U.S., Canada, Latin America, the Caribbean, and the Bahamas.

The founder and lead broker of the company is Andrey Shestakov, a licensed and certified expert with extensive experience in marine engineering and shipbuilding.

The company has an extensive network of partnerships with major yacht manufacturers worldwide and provides services in multiple languages, including Russian, Ukrainian, Spanish, and English. The office is in Dania Beach, Florida, USA.

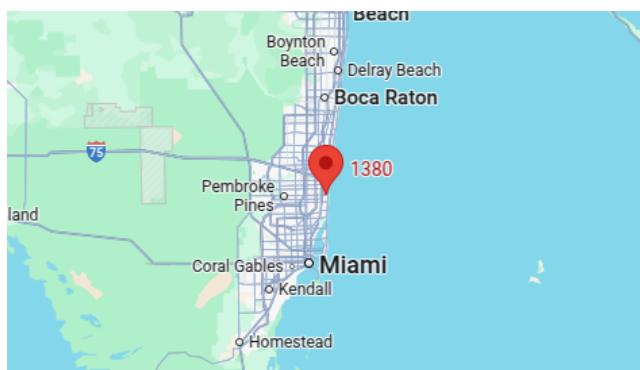
For more information and to view available yachts, you can visit the company's official website: <https://shestakovyachtsales.com>

Contact details

Phone: +1(954)274-4435

Email: andrey@shestakovyachtsales.com

Address



1380 Weeping Willow Way, Hollywood,
Florida 33019