

MISS CHRISTINE - TRINITY



Builder: [Trinity](#)

LOA: 157' 0" (47.85 m)

Year Built: 2006

Beam: 28' 0" (8.53 m)

Model: Tri-Deck MY

Min Draft: 23' 3" (7.08 m)

Price: \$16,900,000 USD Subject to change.

Max Draft: 24' 1" (7.33 m)

[See full listing on our website](#)

Location: Fort Lauderdale, United States

Cruising Speed: 16 Knots (18.41 MPH)

Max Speed: 19 Knots (21.86 MPH)

TABLE OF CONTENTS

OVERVIEW	3
SPECIFICATIONS	4
Basic Information	4
Dimensions	4
Speed, Capacities and Weight	4
Accommodations	5
Hull and Deck Information	5
Engine Information	5
GALLERY	6
DETAILED DESCRIPTION	17
CONTACTS	31

OVERVIEW

MISS CHRISTINE ranks among the most distinguished Trinity tri-deck motor yachts on the market. Beyond her graceful profile, she was specified to uncompromising standards by a long-time yachtsman and multi-yacht owner. Trinity Yachts, working with Evan Marshall, exceeded the brief, delivering a luxury superyacht of rare caliber. Equally noteworthy, her meticulous owner has kept her in peak condition with ongoing upgrades.

Her 20 year ABS class survey is slated for completion in 2026. A comprehensive superstructure repaint was executed in 2023. During 2024 she benefited from new Kohler 99 kW generators, a complete renewal of all A/C chillers with a custom computerized control system, installation of new Spot Zero watermakers, freshly laid teak on the sundeck as well as the Portuguese bridge and forward decks, plus refreshed exterior furniture and numerous additional upgrades.

This elegant motor yacht is perfectly suited to luxury charters and carefree family cruising with children, where her tenders and toys and wide-ranging amenities ensure owners and guests enjoy every moment afloat. Currently en route to Fort Lauderdale.

SPECIFICATIONS

Basic Information

Model Year:
2006

Country:
United States

Year Built:
2006

Dimensions

LOA:
157' 0" (47.85 m)

Beam:
28' 0" (8.53 m)

Min Draft:
23' 3" (7.08 m)

Max Draft:
24' 1" (7.33 m)

Speed, Capacities and Weight

Cruise Speed:
16 Knots (18.41 MPH)

Water Capacity:
2600 Gallons

Max Speed:
19 Knots (21.86 MPH)

Fuel Capacity:
15685 Gallons

Gross Tonnage:
465 Pounds

Accommodations

Total Heads:

9

Crew Berths:

8

Crew Cabin:

5

Hull and Deck Information

Hull Material:

Aluminum Yachts

Hull Designer:

Trinity Yachts

Deck Material:

Aluminum

Interior Designer:

Evan Marshall

Hull Configuration:

Semi-Displacement

Engine Information

Engines:

2

Engine Type:

Inboard

Manufacturer:

Caterpillar

Fuel Type:

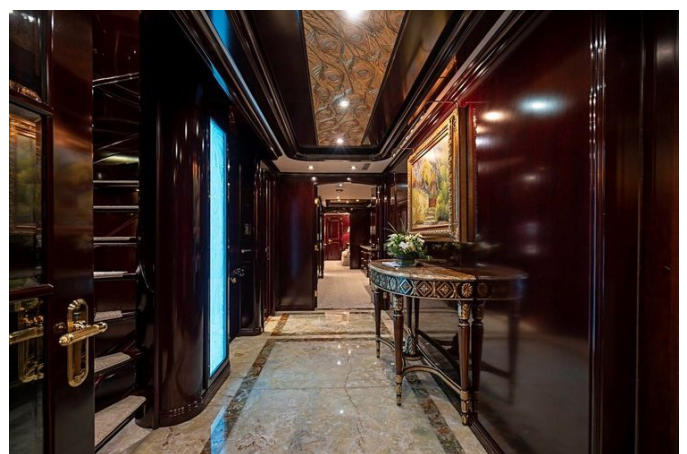
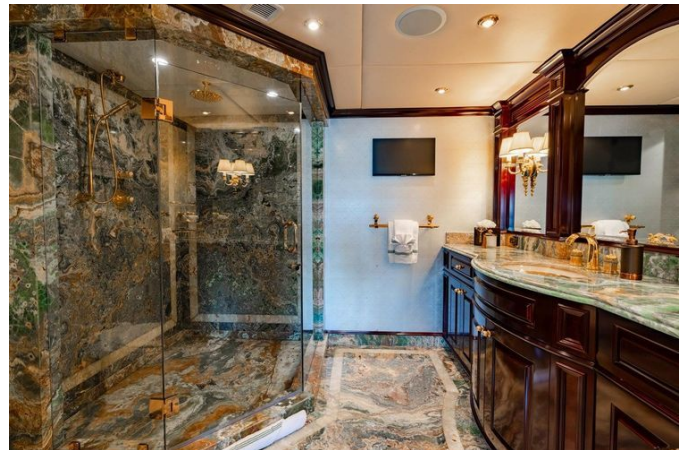
Diesel

GALLERY









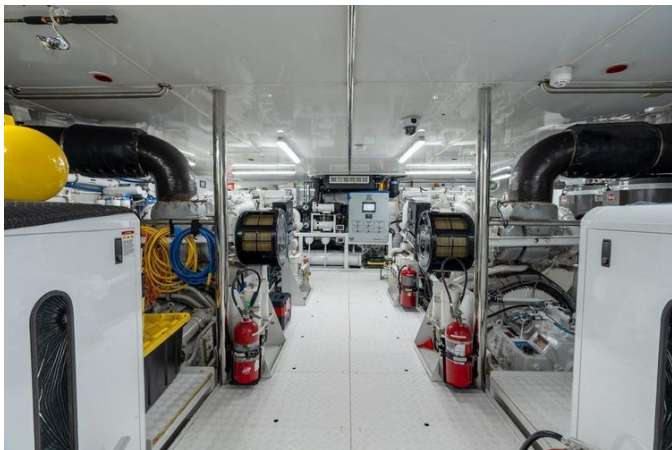


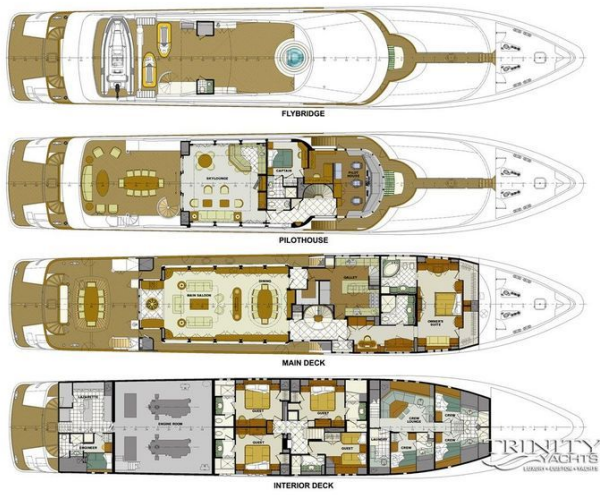












DETAILED DESCRIPTION

Overview

MISS CHRISTINE is one of the finest Trinity Motor Yachts ever built, presenting a five-stateroom layout with a full-beam master stateroom on deck and four guest staterooms on the lower deck. She features rich mahogany interior joinery and high-quality marble and granite throughout, and her newly upholstered furnishings and soft goods are tastefully appointed with premium fabrics and silks. Upgraded and maintained to the highest standards, she is in ready-to-go condition and offers many comfortable areas for entertaining both indoors and out.

The flybridge features a six-person Jacuzzi tub, a gas BBQ grill, lounge and dining areas, and a full bathroom. The upper deck skylounge and upper aft deck areas provide a large circular teak table for dining outdoors and a full-service walk-behind bar indoors, while an entertainment center with HDTV and surround-sound stereo elevates every gathering. On the main deck, the comfortable main salon is ideal for relaxing and entertaining guests, and forward in the main salon a formal dining area showcases a custom dining table with seating for ten. Completing her impeccable presentation, the vessel received a new superstructure paint job in 2023.

Accommodations

Accommodations for eleven guests are offered in five spacious staterooms finished in rich dark cherry, each with an ensuite bath adorned with inlaid marble. Four guest staterooms are located on the lower deck, three with king-sized berths and one with twin berths complemented by an additional Pullman berth above.

The full-beam master stateroom is positioned forward on the main deck and is accessed through the owner's private office to starboard. Bathed in natural light from large windows, it features a dressing table to port and a sofa to starboard. His-and-hers separate walk-in closets are set forward, while his-and-hers separate baths both have inlaid marble floors. Her bath is appointed with an oval marble tub and an overhead fiber optic star ceiling to enhance relaxation, while his benefits from a large marble shower.

Aft of the main foyer, the open-plan main salon and dining area invite effortless entertaining. Expansive windows fill the salon with sunlight for either formal or casual gatherings, with the dining salon forward offering a more formal setting. Al fresco dining is available on the air-conditioned aft main deck or on the upper aft deck. The galley is situated amidship on the port side of the main deck.

Above the main salon on the bridge deck, the full-beam skylounge showcases large windows and aft double automatic sliding glass doors for sweeping views. The sundeck above houses the tender, while a forward jacuzzi with built-in sun pads is surrounded by large open areas for lounge chairs. Unobtrusive glass screens provide shelter from the breeze without interrupting the spectacular panorama.

Crew quarters are located below deck forward of the guest staterooms and include three crew cabins, each with its own bathroom and shower, along with a large crew lounge. The double-berth engineer's cabin is aft of the engine room and includes a bathroom with shower, while the Captain's cabin is aft of the pilothouse and features a queen-size berth and a bathroom with shower. The interior embraces an international style, with classic raised and fielded wooden joinery complemented by European custom furnishings and accessories.

Main salon & dining area

Custom mahogany joinery flows throughout the main salon, where automatic stainless steel and glass sliding doors open to the aft deck and set a gracious tone. Custom upholstered sofas with arms to port and starboard are complemented by a custom upholstered loveseat and two upholstered armchairs, all arranged around twin glass cocktail tables with sea turtles ('25). A custom mahogany half-moon table stands behind the loveseat, while built-in cabinetry to port and starboard with a marble top provides elegant utility. The entertainment center features a Samsung 55-inch LCD TV, Denon stereo, Kaliedscape DVD/VCR, a surround sound system, and an iPad controller. To port, a wet bar presents a gold plated sink with custom fixtures, a Sub-Zero refrigerator, and an icemaker; opposite, a built-in cabinet to starboard houses crystal and stemware. Overhead, a custom oval soffit with mahogany and gold leaf inlay design crowns the space, and custom automatic window treatments with blinds and tie-backs tailor light and privacy to perfection.

Forward in the main salon, the formal dining area showcases a custom-finished dining table with ten dining chairs beneath a custom oval soffit with mahogany, hand-painted inlay, and a light fixture. Custom cabinetry with marble surfaces lines both port and starboard, while a day head forward is appointed with a marble vanity, a sink with custom fixtures, a mirror, and marble flooring.

Galley & laundry

At the heart of the yacht, a professional-grade galley showcases a Wolfe five-burner induction stove with oven and steamer installed in 2023, paired with a Vulcan ESB36-2 salamander and hood with a fire suppression system. Complementing the main cooking suite are a Kitchen Aid convection oven and a Panasonic microwave. Cold storage is abundant, with a Delfied double

refrigerator and freezer, a Sub-Zero 249RP refrigerator, and a Sub-Zero undercounter drink refrigerator, while a Scotsman icemaker stands ready for entertaining. Cleanup is effortless thanks to a Miele Professional G7859 dishwasher, a Kitchen Aid trash compactor, and two double stainless steel sinks. Custom granite surfaces flow throughout, culminating in a granite bar top with three upholstered bar stools. Entertainment and ambience are enhanced by a Visio 12-inch TV and an Alpine stereo with two overhead speakers. Practicality meets provisioning with a chef's pantry and a dedicated stew pantry, and the space is finished with new Amtico wood flooring added in 2023. The yacht's laundry equipment is designed for expedition-level service, featuring two Miele TouchTronic W3033 water control washers in the crew area, two Miele TouchTronic T8003 dryers in the crew area, a Maytag Neptune washer/dryer in the guest foyer, a Maytag Neptune washer/dryer in the lazarette, and a Miele roller press in the crew quarters.

Master stateroom, on-deck

A double-door entry opens to an on-deck master centered on a king berth adorned with an upholstered headboard, custom spread, and shams. Built-in nightstands to port and starboard are crowned with marble tops and provide three drawers, while a custom built-in vanity desk to port offers three drawers forward and three aft. An upholstered settee to port is flanked by built-in cabinets featuring six drawers on each side, complemented by decorative table lamps and a custom overhead soffit with mahogany inlay and integrated lighting. The entertainment center elevates relaxation with a Samsung 55-inch LCD TV, a DIRECTV receiver, a Samsung DVD player, iPad/Crestron remote controls, and a Denon amplifier with surround sound. His-and-her walk-in closets to port and starboard, three oval windows to port and starboard, and custom window treatments with automatic blinds and tie-backs underscore both convenience and privacy. Additional amenities include two full-size

EuroCave wine coolers, a custom office desk with chair, and a built-in six-drawer dresser.

The his-and-her master bath is a marble sanctuary featuring a glass-enclosed shower with custom gold fixtures and dome lighting, marble vanities with a custom sink and gold fixtures, and a Roman-style marble Jacuzzi tub/shower with a glass enclosure and custom fixtures. A head and bidet, decorative light sconces, marble flooring, custom fixtures throughout, custom window treatments, and a 12-inch LCD TV complete this refined retreat.

VIP king stateroom - lower deck, port

This serene port-side retreat presents a king berth with a custom upholstered headboard, generous storage below, and a custom spread and shams, flanked by two built-in nightstands fitted with three drawers, marble tops, and table lamps. Thoughtfully integrated dressers and a vanity with mirror and bench complement a custom overhead soffit with lighting and elegant swag drapery, while hanging closets and bespoke wallcoverings enhance both function and finish. Aft, the entertainment center features a Samsung 26-inch TV, Denon surround sound, Blu-ray, and Kaleidescape for an immersive onboard cinema experience. The private bath is appointed with a marble vanity, custom sink and fixtures, a glass-enclosed marble shower, and marble flooring, completing a suite defined by refined detail and comfort.

Two king guest staterooms – lower deck, port and starboard

The two king guest staterooms on the lower deck, port and starboard, are mirror images and share an identical level of refinement. Each centers on a California King bed with drawer storage beneath, dressed in a custom spread with shams and decorative pillows, and flanked by two built-in nightstands,

each offering three drawers. A built-in vanity with stool integrates seamlessly with a dedicated Entertainment Center and ample storage cabinets and drawers, while custom window treatments and custom lighting set an elegant tone. Every suite is completed by an en-suite head with toilet, a marble vanity with custom sink and fixtures, and a marble, glass-enclosed shower.

Twin guest stateroom - lower deck, starboard

Positioned on the starboard side of the lower deck, this twin guest stateroom features twin berths with storage drawers below, dressed in a custom spread with shams and decorative pillows. An additional Pullman berth above enhances flexibility, while a built-in entertainment center with storage cabinets and drawers ensures effortless organization. Custom window treatments and custom lighting refine the ambiance, and the accommodation is completed by an ensuite head with a toilet, a marble vanity, a custom sink and fixtures, and a marble, glass-enclosed tub/shower.

Crew quarters, aft

A dedicated captain's cabin lies aft of the pilothouse, appointed with a queen berth and private head, while three additional crew cabins are positioned below aft, each arranged with over-and-under bunks and an ensuite head. The engineer's cabin, with a single berth and its own head, is thoughtfully set within the aft lazarette. The crew lounge invites relaxation with bench seating, a Corian table, and two bar stools, supported by a well-equipped service area featuring a True stainless-steel refrigerator, two Sub-Zero refrigerators, a Delfield refrigerator, a Bosch dishwasher, an Amana commercial microwave, and a Corian countertop with sink. Entertainment and communications are equally considered with a Samsung 46-inch TV with Kaleidescape and an Icom 502 VHF radio, while a dedicated crew laundry area with a Miele Touchtronics

washer and dryer ensures effortless turnarounds.

Pilothouse equipment

The pilothouse is appointed with three Crown LTD helm chairs set before the command console, complemented by a leather-upholstered bench seat for guests. A dedicated ship's office is positioned port aft, while twelve storage cabinets are arranged aft in the pilothouse for organized stowage. Watertight doors to port and starboard enhance safety and access, and nine vertical windows deliver superb visibility and natural light. Underfoot, a teak sole provides timeless warmth and durability.

Electronics, navigation & communication

Command with absolute confidence thanks to a comprehensive suite that begins with ARPA Furuno FR2117BB X Band 96-mile radar paired with ARPA Furuno FR2137SBB S Band 96-mile radar for layered target tracking and weather clarity. Precision heading is delivered by the C-Plath Navigat X-MK-11 gyro compass and a Danforth High Speed Constellation magnetic compass, while the C-Plath Navipilot 4000 autopilot holds course with steadfast accuracy. Subsurface awareness comes from the B&G Hydro 2000 depth sounder and a Furuno RD 30 depth sounder, complemented by two Simrad GPS units and the Furuno NavTex NX 700 A/B weather fax for timely navigation data. A Shutter XPC ship's computer and Nobeltek Time Zero Pro Navigation Suite form the digital heart of the bridge, supported by three ACR searchlight controls for precise night operations. Performance metrics are elegantly displayed on two Hatteland 23-inch multi displays and three Hatteland 20-inch multi displays, while the B&G Hydra 2000 wind/speed log and a Furuno UAIS Transponder FA-150 enhance situational awareness. Entertainment and information flow through Direct TV USA and Caribbean with five European

receivers, driven by a Sea Tel DAC-2200 TV antenna, and safety oversight is entrusted to a GMDSS A3 RC1815 console, the Simon ship's monitoring system for fuel, water, fire, and bilge alarms with valve control, and a GE ESL 1500 series fire monitoring system.

Seamless global communication is ensured by the Sailor 900 V-SAT backbone, a Furuno FS 1570 SSB, two Furuno FM 8800S fixed VHF sets, and an Icom IC M502 fixed VHF, supplemented by three Icom ICM88 VHF handheld units for deck-to-bridge agility. Shore-side and onboard connectivity are refined with three Ericson Dual Band GSM cellular phones, a Panasonic KX TD1232 intercom, the Newmar Phone Com internal intercom system, and a Panasonic KXTD1232 telephone system with eight lines and twenty-nine extensions, creating a flawlessly integrated command and guest experience worthy of Shestakov Yacht Sales standards.

Audio & visual equipment

A meticulously curated entertainment ecosystem enriches every deck and cabin. In the main salon, a Samsung 55-inch LCD TV pairs with a Denon AVR 2807 surround receiver amplifier, a Samsung Multi System VCR/Tuner SV5000, a Yamaha DVD S657, and two Kaleidescape players. The skylounge features a Samsung 64-inch LED TV partnered with a Denon AVR W330W surround receiver amplifier, a Pioneer Blu-ray DVD, and Kaleidescape. On the upper aft deck, a Samsung 46-inch TV serves open-air viewing with ease. The master stateroom presents a Samsung 54-inch TV with a Denon AVR surround receiver amplifier, a Samsung Multi System VCR/Tuner SV5000, a Pioneer Blu-ray DVD, and Kaleidescape, while the two master baths each include a Sharp 15-inch TV. Across the three guest staterooms, Samsung 26-inch TVs are matched to Denon AVR surround receiver amplifiers, Pioneer Blu-ray DVD, and Kaleidescape. The twin guest stateroom offers a Sharp 20-inch TV, a Denon AVR surround receiver amplifier, a Samsung Multi System VCR/Tuner SV5000,

and a Yamaha DVD S657. In the crew lounge, a Samsung 46-inch TV is complemented by a Denon AVR surround receiver amplifier, a Pioneer Blu-ray, and Kaleidescape. The captain's cabin is equipped with a Sharp 20-inch TV, a Denon AVR surround receiver amplifier, a Samsung Multi System VCR/Tuner SV5000, a Yamaha DVD S657, and Kaleidescape, and each of the three crew cabins includes a Sharp 15-inch TV.

Skylounge & upper aft deck

In the skylounge, a custom L-shaped leather sofa reupholstered in 2025 anchors the space, complemented by two custom upholstered barrel swivel chairs from 2025 and an upholstered ottoman that doubles as a table. Two wooden end tables with drawers provide convenient stowage, while a full bar forward to port with a marble top serves refreshments with ease. The forward bulkhead hosts an entertainment center with a Samsung 64-inch LED TV, a Denon AVR surround receiver amplifier, Blu-ray DVD, and Kaleidescape. A rectangular game table with four newly upholstered chairs invites lingering play, and custom window treatments with tie-backs frame the views. A stainless-steel automatic sliding door with double glass leads to the upper aft deck, where a new varnished teak settee and table added in 2024 join four teak barrel chairs from 2024 and two teak round tables atop a teak sole. A serpentine stairway descends to the aft deck, secured by a safety gate for the stairs to the lower deck, while six JL Audio overhead speakers enrich the ambiance.

Flybridge equipment

Freshly laid teak decks in '25 set a refined stage for an expansive social area anchored by a teak six-inch oval table accompanied by six teak dining chairs and complemented by four teak round end tables. A Jacuzzi hot tub,

configured for six guests, is encircled by new teak decking added in '25, while a walk up portside bar with a granite countertop and stainless steel sink keeps refreshments close at hand, supported by two Sub Zero refrigerated drawers and an American commercial icemaker. Practical touches include a storage cabinet to port and a convenient day head to starboard, along with four teak lounge chairs arranged for sun and conversation. Culinary flair comes courtesy of a Tec infrared BBQ grill, and entertainment is delivered by a Samsung 50 inch TV and six stereo speakers. Sounding presence and safety are enhanced by four Kahlenburg chrome trumpet horns, and tender handling is effortless with a Marquipt 3,500 lb davit. The space is finished with all exterior cushions and reupholstery completed in '24, a new sunshade installed in '24, and a new acrylic windscreen added in '24.

Tenders & toys

A 22-foot 2005 Novurania tender equipped with a 2024 Mercury 250 HP outboard is complemented by two 2014 Yamaha waverunners, delivering versatile, spirited fun on the water.

Deck equipment

Purposeful and beautifully engineered, the foredeck is equipped with a Muir VCR11000 vertical anchor windlass working in concert with two Muir VC4000 vertical capstans to command the ground tackle, which comprises two 600 lbs Talon anchors and 3.4-inch anchor chain, 450 feet each side. Tender handling is effortless thanks to a boat crane and a Nautical Structures davit with a 3,500 lb capacity, while boarding remains gracious and secure via a Marquipt hydraulic gangplank passarelle and two Marquipt seven-step sea stair accommodation ladders. Elevating both aesthetics and surefooted practicality, new teak decks were laid on the sundeck, Portuguese wings, and foredeck to

the bow ('25).

Aft deck equipment

The aft deck invites alfresco gatherings around a handsome teak table accompanied by ten matching teak chairs, with rich teak decks underfoot enhancing the timeless yachting ambiance. Entertainment is effortless thanks to a Sunbrite 46-inch waterproof HD LCD TV, while a well-appointed wet bar with stainless sink and faucet keeps refreshments close at hand. For comfort in any climate, the aft deck is set up for A/C hookup.

Electrical equipment & lazarette

Power on board is anchored by twin Kohler 99KW generators with John Deere blocks, new in 2024, showing 3,264 hours on the port generator and 3,353 hours on the starboard. Ship's power is 208V, three-phase, 60 Hz. The starting systems are robust, with four Mastervolt Autocharger starting batteries for each main engine and two Mastervolt Autocharger starting batteries for each generator, complemented by a GMDSS 3 Mastervolt Autocharger emergency battery for added security.

In the lazarette, a dedicated control room with air conditioning ensures cool, efficient operations alongside a practical workbench and table fitted with a vice and bench grinder. A Continental freezer expands provisioning capacity, while Woodward Power Management with an A Sea shore power convertor delivers seamless shore-to-ship energy management. An escape hatch to the aft deck provides quick, safe egress.

Security, safety & fire protection

Vigilance begins with a Simon Touch ship's monitoring system serving both the

crew areas and the bridge, complemented by six Vitec cameras with an integrated recording and display system that keeps every critical angle in view. Fire readiness is anchored by a Kidde CO2 bottle fire control system comprising three bottles, four CO2 hand extinguishers positioned in the engine room and lazarette, and thirty-two ABC fire extinguishers distributed throughout the vessel. Detection and suppression are entrusted to a GE ESL 1500 Series fire alarm, wet chemical fire suppression protecting the galley hood, and a new Consilium fire system installed vessel wide with a pilothouse monitor synchronized with the Simon system.

Safety provisions include a six person life raft, two twenty five person life rafts, and four life rings, supported by an automatic EPIRB, twelve flares, and a Category A medical kit.

Engine & mechanical equipment

Power comes from twin Caterpillar 3512s rated at 2,250 HP each, with a top-end overhaul on the main engines completed at 6,226 hours (6/20). Total engine hours stand at 8,936 hours to port and 8,978 hours to starboard, with the main engine exhausts fully rebuilt in 2023. Drive is handled through Reintjies WVS730 gearboxes with a 3.048 to 1 ratio, turning a Michigan five-blade fixed 56-inch drive, while a Quantum Marine 150 HP hydraulic bow thruster and two Quantum Marine zero-speed stabilizers—both stabilizers benefiting from new bearings, seals, and hydraulic rams in 2024—deliver confident maneuvering and exceptional comfort at rest. The vessel's climate control is assured by a Cuge Marine 36.5 tr air-conditioning system rated at 438,000 BTU, with all air-conditioning chiller plants replaced in 2024. Fresh water autonomy is enhanced by two custom Spot Zero watermakers providing a total of 7,200 GPD, installed in 2024, backed by a Headhunter fresh-water system upgraded with Headhunter Aquabox pumps, and waste is managed by a Headhunter MSD II sewage system. Fuel quality is safeguarded by Alfa Laval

separation and filtration, and bilge discharge is refined through a Village Marine oily water separator for clean, compliant operation. Steering confidence comes from an EMI dual-pump steering system, while reliability and serviceability are furthered by a DeAngelo-wrapped exhaust system and new Walker AirSeps fitted in 2025. The engine room reflects meticulous care, freshly painted in 2025 to include the main engines, and features an emergency helm and controls for redundancy, emergency stairs on the starboard side aft for safe egress, and two air compressors to support shipwide systems. Domestic systems have been thoughtfully renewed with water heaters replaced in 2023, and onboard maintenance is simplified by a 176-gallon clean oil tank and a 288-gallon waste oil tank.

Recent upgrades - 2025 thru 2026

In 2026, the yacht completed an ABS 20-year survey inspection and was refreshed with new linens and towels throughout. In 2025, two new Kohler 99KW generators were installed; the main engine exhaust system was wrapped with new Walker AirSeps; the skylounge received furniture that was replaced and reupholstered as needed; the main salon was enhanced with new glass tables; the upper aft deck was updated with a new varnished teak settee and table and four barrel chairs; new teak decks were laid on the sundeck around the jacuzzi, on the Portuguese wings, and across the foredeck to the bow; and the engine room was meticulously painted, including the main engines.

Exclusions

All owners' and crew's personal items are excluded from the sale, and a detailed exclusions schedule is available upon request.

Recent upgrades, 2023 thru 2024

Meticulously refreshed between 2023 and 2024, this yacht presents as a standout. The full superstructure was painted in 2023, then refined with a ceramic coating in 2024. Mechanical reliability was significantly enhanced with the full exhaust system replaced from the engine aft in 2023 and the main engine exhaust fully rebuilt the same year. Stability and ride comfort benefited from new bearings, seals, and hydraulic rams on the stabilizers. On deck, a new acrylic windscreen on the sundeck pairs with a newly added forward sundeck sunshade, while the sundeck furniture has been reupholstered to complement the all-new exterior upholstery and soft goods introduced in 2024. Climate control received a comprehensive overhaul with all A/C chiller plants replaced in 2024 and air handlers renewed throughout the vessel. Fresh teak furniture was added on the bridge deck aft in 2024, and the galley saw substantive upgrades in 2023 with new ovens, new flooring, and new water heaters. Systems and support were further elevated by a custom Spot Zero Watermakers upgrade in 2024, and the tender performance was boosted with a new Mercury 250 HP outboard for the RIB tender in 2024.

CONTACTS

Shestakov Yacht Sales is a brokerage company specializing in the sale and service of yachts worldwide. The company offers services for buying and selling both new and used motor yachts, sailing vessels, and luxury superyachts. They also provide yacht registration, insurance, technical maintenance, crew selection, and charter organization services across the U.S., Canada, Latin America, the Caribbean, and the Bahamas.

The founder and lead broker of the company is Andrey Shestakov, a licensed and certified expert with extensive experience in marine engineering and shipbuilding.

The company has an extensive network of partnerships with major yacht manufacturers worldwide and provides services in multiple languages, including Russian, Ukrainian, Spanish, and English. The office is in Dania Beach, Florida, USA.

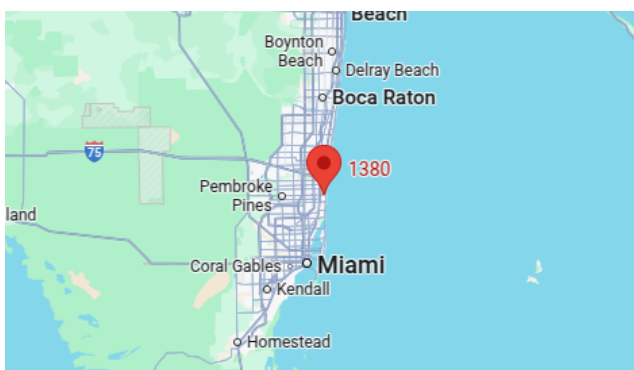
For more information and to view available yachts, you can visit the company's official website: <https://shestakovyachtsales.com>

Contact details

Phone: +1(954)274-4435

Email: andrey@shestakovyachtsales.com

Address



1380 Weeping Willow Way, Hollywood,
Florida 33019