



SHESTAKOV

Yacht Sales

## PROJECT PETRA - CUSTOM



**Builder:** [CUSTOM](#)

**LOA:** 160' 0" (48.77 m)

**Year Built:** 2028

**Beam:** 30' 0" (9.20 m)

**Model:** RMK

**Max Draft:** 27' 11" (8.50 m)

**Price:** \$31,002,491.89 USD Subject to change.

**Cruising Speed:** 12 Knots (13.81 MPH)

[See full listing on our website](#)

**Location:** Istanbul, Turkey

**Max Speed:** 16 Knots (18.41 MPH)

If you would like to buy a yacht **PROJECT PETRA - CUSTOM** or would like help answering any questions concerning purchasing, selling, or chartering a yacht, please call **+1(954)274-4435** or click here on <https://shestakovyachtsales.com>

---

# TABLE OF CONTENTS

---

<b>OVERVIEW .....</b>	<b>3</b>
<b>SPECIFICATIONS .....</b>	<b>5</b>
Basic Information .....	5
Dimensions .....	5
Speed, Capacities and Weight .....	5
Accommodations .....	6
Hull and Deck Information .....	6
Engine Information .....	6
<b>GALLERY .....</b>	<b>7</b>
<b>DETAILED DESCRIPTION .....</b>	<b>13</b>
<b>CONTACTS .....</b>	<b>17</b>

# OVERVIEW

---

PROJECT PETRA is a contemporary explorer superyacht, the product of Milan's Hot Lab studio and set to be built by renowned Turkish shipyard RMK Marine. The hull is a full displacement steel structure married to an aluminum superstructure, engineered for true ocean crossing capability and an expansive cruising range. This design is a fully engineered new build, cleared for immediate production with a projected delivery in approximately 24 months.

The lines are purposeful and seaworthy, dominated by a strong bow optimized for long bluewater passages and an aft deck of remarkable breadth that can be configured as a swimming pool, helicopter operating platform, or a stowage and launch area for tenders and water toys. Accommodation is arranged around six guest cabins, supported by dedicated crew quarters and carefully organized technical zones that prioritize operational efficiency, system redundancy and the autonomy expected of a genuine global cruiser and expedition vessel.

PROJECT PETRA is available in three tailored variants to match different owner requirements and cruising programs. The CORE version represents the Pleasure Class baseline, AURA is specified to meet Commercial Class standards, and INFINITE is strengthened to 1D Ice Class for extended high latitude capability. Each iteration is priced in line with its classification and offers a selection of options including six and seven cabin layouts, helicopter capability, an aft deck pool and davits rated between 2 and 4 tonnes, enabling on deck tenders from 6 to 10 metres and smooth, practical deck arrangements.

The project is conceived for an owner seeking a highly personalized vessel: the platform and options can be combined to create a bespoke yacht that reflects an individual vision and enables true worldwide exploration. PROJECT PETRA

brings together robust construction and refined aesthetics, marrying timeless, elegant lines with proven naval engineering—the distinct signature one expects from Hot Lab collaborating with RMK Marine.

# SPECIFICATIONS

---

## Basic Information

---

**Model Year:**  
2028

**Country:**  
Turkey

**Year Built:**  
2028

## Dimensions

---

**LOA:**  
160' 0" (48.77 m)

**Max Draft:**  
27' 11" (8.50 m)

**Beam:**  
30' 0" (9.20 m)

## Speed, Capacities and Weight

---

**Cruise Speed:**  
12 Knots (13.81 MPH)

**Water Capacity:**  
3434 Gallons

**Max Speed:**  
16 Knots (18.41 MPH)

**Fuel Capacity:**  
14529 Gallons

**Gross Tonnage:**  
499 Pounds

## Accommodations

---

**Total Heads:**

9

**Crew Cabin:**

5

## Hull and Deck Information

---

**Hull Material:**

Steel Yachts

**Hull Designer:**

Hot Lab

**Deck Material:**

Steel

**Interior Designer:**

Hot Lab

**Hull Configuration:**

N/A

## Engine Information

---

**Engines:**

4

**Engine Type:**

Inboard

**Manufacturer:**

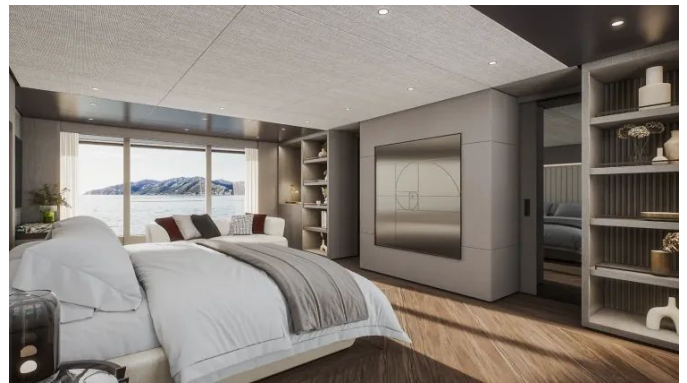
Volvo

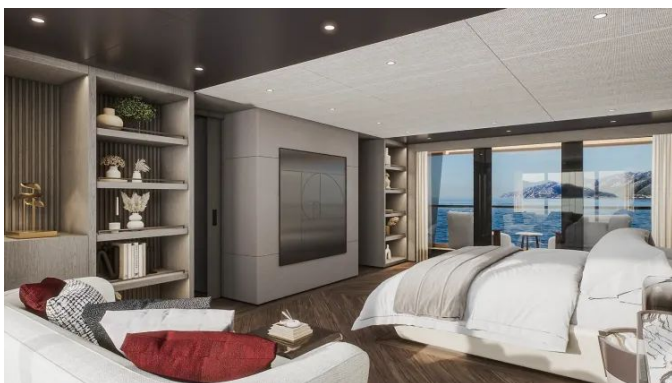
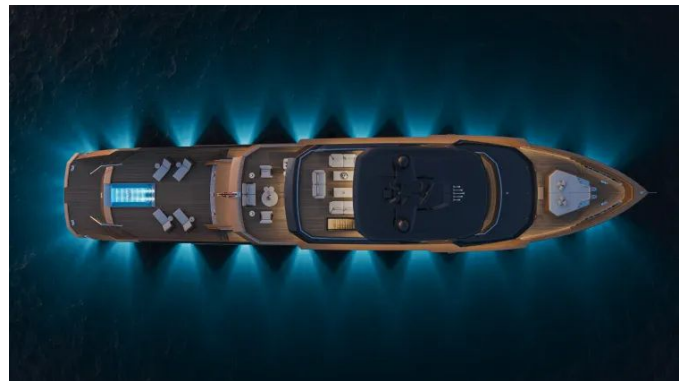
**Fuel Type:**

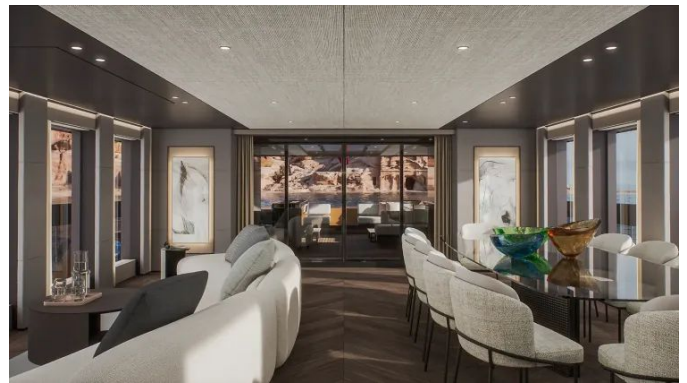
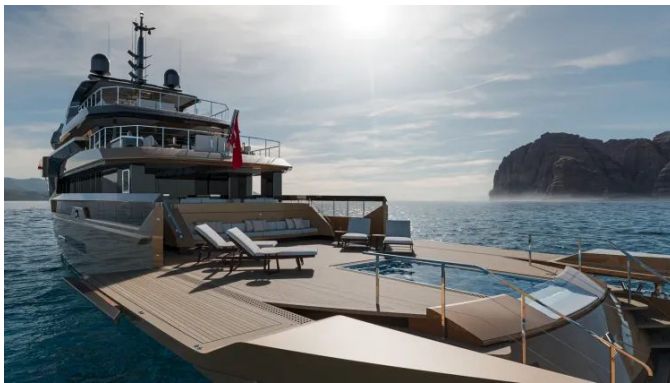
Diesel

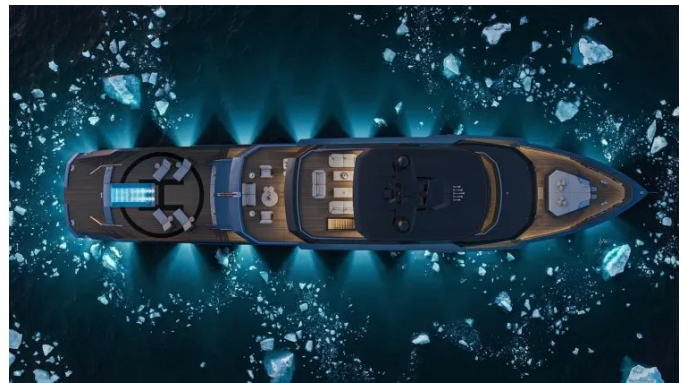
# GALLERY













---

# DETAILED DESCRIPTION

---

## Main machinery

---

Four Volvo Penta D13 diesel engines supply the vessel's propulsion, each delivering 735 kW at 2,400 rpm and driving through the Volvo IPS40 Professional integrated pod drive. Thrust is produced by two Volvo IPS40 pod units fitted with forward-facing, twin counter-rotating propellers, and for the INFINITE specification an optional IPS + Hybrid package is available. In CORE and AURA configurations the yacht achieves a maximum speed of 16 knots with a comfortable cruising pace of 12 knots; with the INFINITE configuration and the optional Hybrid system the top speed is approximately 15 knots and the cruising speed around 10 knots. Fuel endurance is equally impressive, offering an approximate range of 3,500 nautical miles, which extends to roughly 4,000 nautical miles when configured with the INFINITE - Hybrid option.

## Capacities (approximately)

---

Configured for true long-distance voyaging, her tankage is generous and thoughtfully arranged: fuel capacity totals 54,993 liters (14,529 gallons) to enable extended cruising, while a freshwater reserve of 12,997 liters (3,434 gallons) guarantees sustained onboard comfort and independence. Routine upkeep is simplified by purpose-designed tanks of 999 liters (264 gallons) each for lube oil and for dirty lube oil, and waste handling is addressed with 4,996 liters (1,320 gallons) allocated to grey water and 2,997 liters (792 gallons) dedicated to black water.

---

## Navigation & communication equipment

---

Connectivity aboard is delivered with discretion and reliability: Starlink satellite communications, supplied by the owner, provide high performance links, while the VHF radiotelephones are configured within a GMDSS compliant framework meeting A1, A2 and A3 standards and incorporating Navtex for voyage safety. An integrated communications system (TBC) complements an advanced navigation ensemble that offers GPS and chartplotter solutions from Furuno, Simrad, Sperry or equivalent manufacturers, with wind instruments elegantly integrated into the overall navigation package.

---

## Auxiliary machinery/equipment & electrical system

---

Electrical power is supplied by two Onan or equivalent generators, each rated between 80 and 100 kW, configured to service an electrical system compatible with a 400V/230V AC, 50 Hz shore connection. Maneuvering is enhanced by a single electric tunnel bow thruster rated 80 to 100 kW alongside Volvo Penta EVC integrated pod steering with joystick and wing stations, seamlessly coordinated with the IPS pod steering system. Onboard comfort, both at anchor and underway, is assured by fully electric zero speed fin stabilizers from Humphree, CMC, or an equivalent manufacturer.

Environmental systems include a Hamann, Epe, or equivalent sewage treatment plant and a DVZ or equivalent oily bilge separator, while freshwater independence is provided by water makers from Idromar, HP, Epe, or comparable suppliers. Essential pumping roles are entrusted to fire and bilge pumps by Gianneschi, CEM, Wilo, Azcue, or equivalents, and fuel polishing is performed by separators and filters from Alfa Laval, GEA, or similar manufacturers. Guest convenience and climate control are finished with Jets or equivalent WCs and a Marincold or equivalent HVAC system.

## Domestic equipment

---

The main galley is lavishly equipped with appliances by Siemens, Electrolux, or equivalent, while the refrigeration suite comprises a dedicated cold room and a separate freezing room, complemented by domestic refrigeration for everyday provisions. The crew pantry is fitted as per GA with Siemens, Electrolux, or equivalent appliances, and the guest pantry is similarly specified with the same branded equipment. Laundry arrangements include a principal laundry fitted with Siemens, Electrolux, or equivalent machines, together with a crew laundry installed to the same specification.

## Other

---

The yacht's exterior living areas are anchored by meticulously crafted, shipyard built, integrated furnishings, while additional loose pieces supplied by the owner allow for individual stylistic expression. Where shown on the GA, a gym is fitted and finished to a superior guest standard, creating an elegant onboard wellness environment. Exercise equipment is provided by the owner, enabling a bespoke choice of apparatus to suit each guest's personal training preferences.

## Tenders and watersports equipment

---

An owner-provided complement of tenders and watersports equipment is envisaged, anchored by a primary Capelli tender (or an equivalent craft) and accompanied by a 4.10m service/rescue tender. For more spirited days on the water, waverunners such as the Kawasaki STX160 or comparable models are provided under owner supply; scuba equipment is likewise the owner's responsibility and is not specified. In keeping with the programme, all toys and tenders are supplied by the owner.

## Deck equipment

---

Designed for intuitive, graceful operation, the deck is fitted with a Data Hidrolik anchor windlass to provide reliable power when coming alongside or weighing anchor, while aft warping capstans by Data Hidrolik or an equivalent make stern handling straightforward and precise. The ground tackle comprises a heavy-duty local anchor paired with Evren/Yapas chain and associated fittings to guarantee secure holding on a wide variety of seabeds. Tender movements are managed with ease by a boat crane and davits from Opacmare, Besenzoni, or a comparable manufacturer, with an Opacmare or equivalent transformer installed to ensure smooth, safe boarding and launching procedures. At the stern, a swim platform arranged as a beach club in accordance with the GA offers effortless water access and an elegant waterside living experience, and extended visibility for night passages is assured by a high-performance Francis searchlight or an equivalent unit.

## Security & safety equipment

---

Safety provisions are centred on Viking Life equipment, or an equivalent standard, supplied and certified fully in accordance with class and code requirements. Fire protection is achieved through class-approved fixed and portable firefighting installations integrated with comprehensive fire detection. Essential systems are overseen by an advanced alarm and monitoring suite from Praxis, Bonning, Wartsila, or a comparable provider, ensuring continuous supervision of critical functions. For onboard security, the yacht is fitted with Samsung CCTV, or a like-for-like solution, and is supported by SSAS and GMDSS capabilities where required.

# CONTACTS

---

Shestakov Yacht Sales is a brokerage company specializing in the sale and service of yachts worldwide. The company offers services for buying and selling both new and used motor yachts, sailing vessels, and luxury superyachts. They also provide yacht registration, insurance, technical maintenance, crew selection, and charter organization services across the U.S., Canada, Latin America, the Caribbean, and the Bahamas.

The founder and lead broker of the company is Andrey Shestakov, a licensed and certified expert with extensive experience in marine engineering and shipbuilding.

The company has an extensive network of partnerships with major yacht manufacturers worldwide and provides services in multiple languages, including Russian, Ukrainian, Spanish, and English. The office is in Dania Beach, Florida, USA.

For more information and to view available yachts, you can visit the company's official website: <https://shestakovyachtsales.com>

## Contact details

---

**Phone:** +1(954)274-4435

**Email:** [andrey@shestakovyachtsales.com](mailto:andrey@shestakovyachtsales.com)

## Address

---



1380 Weeping Willow Way, Hollywood,  
Florida 33019