

ALUNYA - BENETTI



Builder: [Benetti](#)

LOA: 163' 0" (49.90 m)

Year Built: 2023

Beam: 30' 0" (9.20 m)

Model: B.Now 50M Oasis

Max Draft: 8' 2" (2.50 m)

Price: - Subject to change.

Cruising Speed: 12 Knots (13.81 MPH)

[See full listing on our website](#)

Location: NA, France

Max Speed: 16 Knots (18.41 MPH)

TABLE OF CONTENTS

OVERVIEW	3
SPECIFICATIONS	4
Basic Information	4
Dimensions	4
Speed, Capacities and Weight	5
Accommodations	5
Hull and Deck Information	5
Engine Information	6
GALLERY	7
DETAILED DESCRIPTION	15
CONTACTS	20

OVERVIEW

Presenting ALUNYA, the sixth jewel in Benetti's renowned B.Now 50m collection, unveiled in 2023 at the esteemed Livorno shipyard. This stunning yacht features the innovative design of the British firm RWD, paired with the refined naval architecture by Italy's PierLuigi Ausonio. Stretching across four beautifully crafted decks, ALUNYA offers a seamless blend of indoor and outdoor spaces, with a main saloon that opens directly onto the pioneering Oasis Deck. This revolutionary maritime design promotes a lively, ocean-focused lifestyle, highlighted by a magnificent 36 sqm beach club that beckons relaxation and pleasure.

The deck's fold-out wings enhance the yacht's connection to the sea while offering protection from the waves, creating a welcoming environment. Central to the social area is a breathtaking infinity pool, elegantly integrated into the deck, providing an unmatched closeness to the ocean.

ALUNYA can host up to 10 guests in five opulent suites, including a generous owner's suite on the main deck, featuring a private study, a large ensuite, and a secluded terrace for peaceful moments. The additional guest cabins, situated on the lower deck, are meticulously designed to ensure comfort and privacy. Additionally, the yacht includes six crew cabins, accommodating an 11-member crew committed to delivering outstanding service.

For those interested in yacht acquisitions at the current boat location, ALUNYA offers a rare chance to own a yacht that embodies luxury and sophistication. Seize the opportunity to discover this extraordinary vessel, ideal for those desiring an elegant yachting adventure.

SPECIFICATIONS

Basic Information

Category:
Motor yachts

Year Built:
2023

Sub category:
Motor Yacht

Country:
France

Model Year:
2023

Dimensions

LOA:
163' 0" (49.90 m)

Max Draft:
8' 2" (2.50 m)

Beam:
30' 0" (9.20 m)

Speed, Capacities and Weight

Cruise Speed:

12 Knots (13.81 MPH)

Water Capacity:

3434.24 Gallons

Max Speed:

16 Knots (18.41 MPH)

Fuel Capacity:

16907.01 Gallons

Gross Tonnage:

499 Pounds

Accommodations

Total Heads:

2

Crew Berths:

11

Hull and Deck Information

Hull Material:

Steel Yachts

Hull Designer:

Benetti

Deck Material:

Steel

Interior Designer:

Benetti

Hull Configuration:

N/A

Engine Information

Engines:

2

Engine Type:

Inboard

Manufacturer:

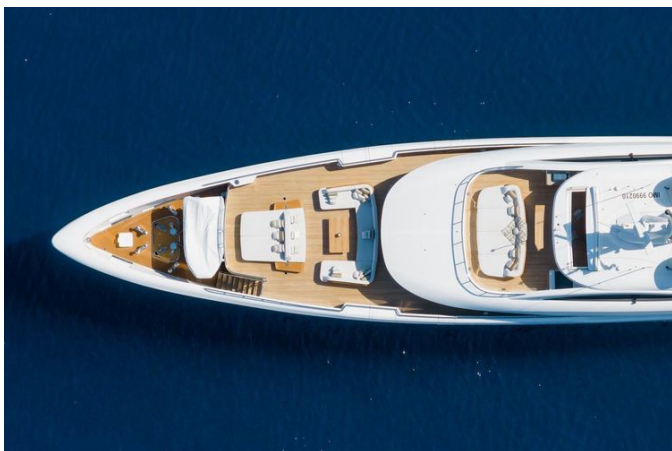
MAN

Fuel Type:

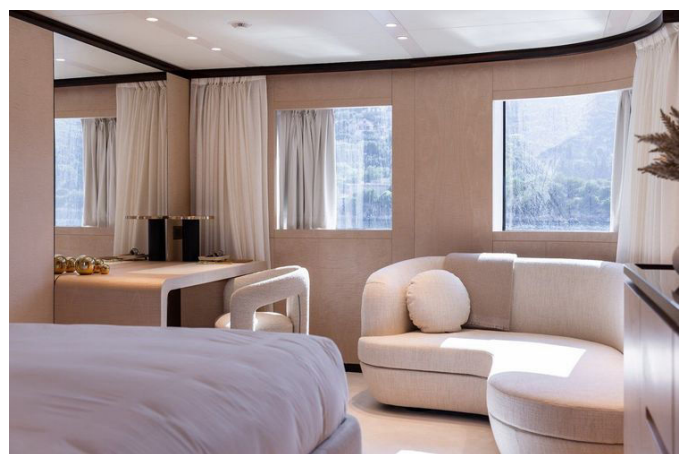
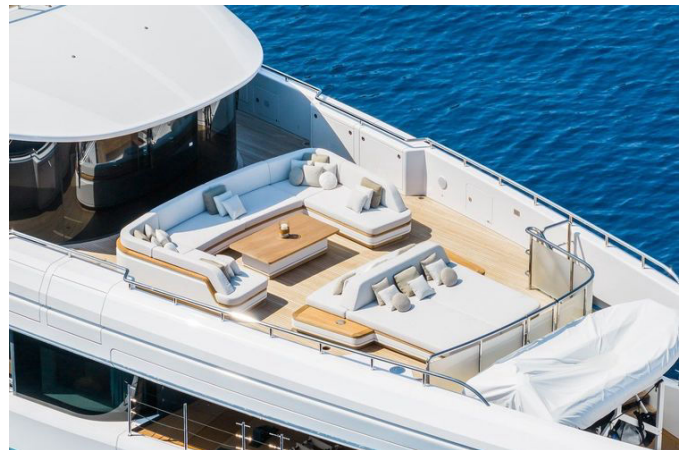
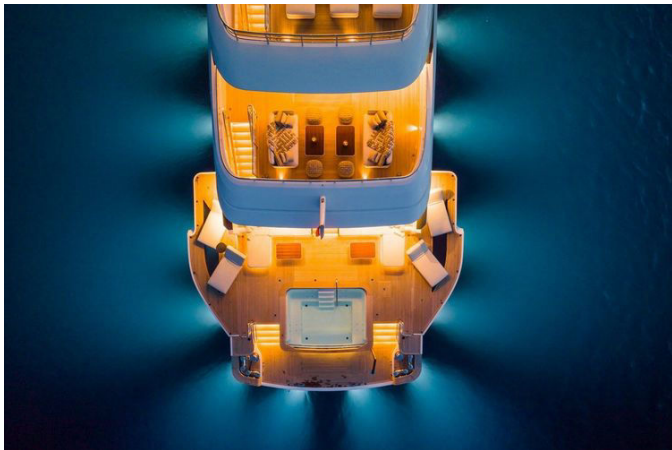
Diesel

GALLERY





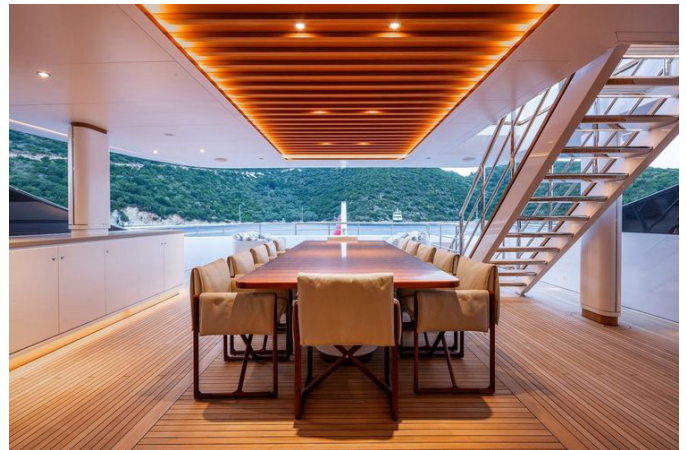












DETAILED DESCRIPTION

Specifications

Presenting a remarkable feat of contemporary nautical design, this 2023 Benetti BNOW Oasis Deck yacht stands as a pinnacle of opulence and capability. Measuring 49.9 meters in length and 9.2 meters in width, this vessel provides generous space for leisure and social gatherings. Its 2.5-meter draft ensures a steady and serene voyage across the waters.

Constructed by the esteemed Benetti shipyard, this yacht showcases the creative genius of naval architect PierLuigi Ausonio, with exterior aesthetics crafted by Benetti in partnership with RWD. The yacht's elegant white steel hull is paired with a refined superstructure, all sailing proudly under the Cayman flag. It is RINA classified and fully compliant with MCA standards, guaranteeing top-tier safety and quality.

Equipped with two MAN 12V 1400 engines, each producing 1029KW at 2300 RPM, the yacht glides effortlessly at a cruising speed of 12 knots, reaching up to 16 knots at full throttle. With a fuel capacity of 64,000 liters, it is primed for extensive journeys, while the 13,000-liter water tank and 5,800-liter holding tanks ensure sufficient supplies for prolonged stays at sea.

The interior is designed to host up to 10 guests across five lavish cabins, including a master suite and four double cabins, ensuring a harmonious mix of comfort and seclusion. The crew is accommodated in style with four twin crew cabins, a single cabin, and a captain's cabin, totaling 11 berths.

This yacht transcends mere luxury and performance; it embodies grace and sophistication, poised to deliver an exceptional yachting adventure.

Machinery

This yacht is driven by two powerful MAN 12V 1400 engines, each producing 1029KW at 2300 RPM, with a total of 800 hours of operation recorded. These engines are coupled with ZF 3311 gearboxes, featuring a 4,478:1 ratio, ensuring seamless and effective power delivery. The yacht's capabilities are remarkable, achieving a top speed of 16 knots with a fuel usage of 560 liters per hour, allowing for a range of 1600 nautical miles at 2350 RPM. For more relaxed voyages, it sails smoothly at 12 knots, using 150 liters per hour, extending the range to 4500 nautical miles at 1600 RPM. Alternatively, at 10 knots, the yacht consumes 120 liters per hour, offering an extended range of 4800 nautical miles at 1400 RPM.

The yacht's electrical demands are met by two Kohler 125 EFOZDJ generators, each delivering 125 kW. For water supply, the Idromar MC9 Duplex water makers can produce up to 18,000 liters daily. Stability is ensured by CMC 3.5m² HS 160 zero speed and underway stabilizers, while maneuverability is enhanced by a CMC TP100 bow thruster with a power output of 110-132kW. The steering system is a CMC Twindisk power unit, complete with an emergency steering feature.

The fuel and filtration systems are exceptional, featuring a Gianneschi separator with RACOR pre-filters for both the main engines and generators, along with a tender filling station equipped with a pre-filter. The sewage system is managed by Jets Vacuum, and the fresh water system includes a Gianneschi cold and hot circulating system with a sand filter, complemented by an Idromar silver ionization unit and an Idrofast 9100 water softener. Bilge water is filtered through a DVZ 150 FU oily water separator.

The yacht also includes a lube oil capacity of 600 liters and a waste oil capacity of 600 liters. For added convenience, a dumb waiter links the main deck to the sundeck, ensuring seamless service throughout the vessel. This

comprehensive machinery setup ensures that the yacht operates efficiently and reliably, providing a luxurious and smooth sailing experience.

Communication systems

This yacht boasts an advanced communication system designed to guarantee uninterrupted connectivity and security while at sea. Central to its communication array is the Furuno Felcom 18 SAT Com, offering dependable satellite communication capabilities. Enhancing this setup is the onboard Grandstream telephone system, which ensures effortless communication throughout the yacht. For extended range communication, the vessel is outfitted with a Furuno MF/HF 2570 SSB radio, allowing you to maintain contact even when distant from the coast. The Furuno 8900 VHF radio provides strong short-range communication, crucial for daily operations and safety. Furthermore, the yacht is equipped with a Vingtor Stentofon VSP 211L intercom system, facilitating effective communication across various sections of the yacht. Although specifics of the cellular phone system are not detailed, the comprehensive configuration ensures that all communication requirements are fulfilled, offering reassurance and convenience for both guests and crew.

Navigation systems

This yacht features a sophisticated array of navigation systems, guaranteeing accurate and dependable guidance on the open water. Its radar capabilities are impressive, incorporating both Furuno X band and S band radars for extensive coverage and improved situational awareness. The Raytheon Anschutz gyrocompass provides precise heading data, crucial for maintaining a steady course, while the Furuno DS-85 speedlog delivers exact speed readings. The SIMRAD AP79 Mk2 autopilot system facilitates smooth and efficient

navigation, enabling automatic course corrections.

For depth assessment, the yacht utilizes a Furuno depth sounder, ensuring safe navigation through diverse sea conditions. Nighttime navigation is enhanced by the FLIR M300 series night vision system, which offers exceptional visibility in low-light environments. The vessel is equipped with two Furuno GP-170 GPS units, ensuring redundancy and reliability in position tracking. Navigation plotting is managed by the Furuno ECDIS FMD, a paperless chart system that simplifies route planning and monitoring.

Wind conditions are tracked by the Furuno RD-33 wind log, providing real-time data essential for optimal sailing performance. Additionally, the yacht is fitted with a Furuno NX-700A Navtex system, supplying vital navigational and weather information. Although specifics of the magnetic compass are not detailed, the comprehensive navigation setup ensures the yacht is fully equipped for any voyage, offering assurance and precision for both captain and crew.

Safety & security equipment

This yacht is outfitted with an extensive range of safety and security systems, guaranteeing the highest level of protection for everyone aboard. The fire fighting equipment is cutting-edge, featuring a fire control system with fire-resistant materials, a CO2 suppression system in the galley, and NOVEC suppression in the engine room. The yacht is well-equipped with fire extinguishers, including one 9kg F type, ten 6kg powder extinguishers, three 5kg CO2 extinguishers, and a large 20kg CO2 extinguisher. Fire and general alarms are strategically placed throughout the vessel to provide early alerts in case of emergencies.

Regarding safety equipment, the yacht is ready for any scenario with two SurvitecZodiac XTREM life rafts for 10 people each and two for 12 people each, ensuring sufficient capacity for all guests and crew. Additionally, there are two

life rings with buoyant lines and three life rings equipped with lights and smoke for improved visibility and safety. The yacht is fitted with an Oceansignal Safesea EPIRB1 PRO, offering reliable emergency positioning in distress situations. For signaling, the yacht carries six parachute flares, six handheld flares, and two buoyant smoke signals.

Medical safety is also prioritized, with equipment conforming to the UK MSN 1905 Scale A standard, suitable for up to 20 crew members and 12 guests. This thorough safety and security arrangement ensures the yacht is fully prepared to manage any situation, providing peace of mind for everyone on board.

CONTACTS

Shestakov Yacht Sales is a brokerage company specializing in the sale and service of yachts worldwide. The company offers services for buying and selling both new and used motor yachts, sailing vessels, and luxury superyachts. They also provide yacht registration, insurance, technical maintenance, crew selection, and charter organization services across the U.S., Canada, Latin America, the Caribbean, and the Bahamas.

The founder and lead broker of the company is Andrey Shestakov, a licensed and certified expert with extensive experience in marine engineering and shipbuilding.

The company has an extensive network of partnerships with major yacht manufacturers worldwide and provides services in multiple languages, including Russian, Ukrainian, Spanish, and English. The office is in Dania Beach, Florida, USA.

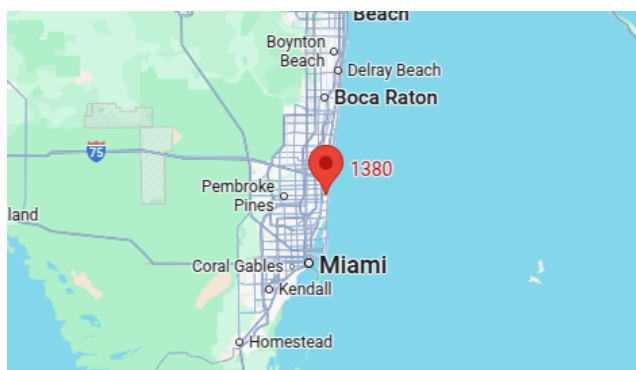
For more information and to view available yachts, you can visit the company's official website: <https://shestakovyachtsales.com>

Contact details

Phone: +1(954)274-4435

Email: andrey@shestakovyachtsales.com

Address



1380 Weeping Willow Way, Hollywood,
Florida 33019