

## EMERALD - FEADSHIP



**Builder:** [FeadShip](#)

**LOA:** 165' 0" (50.40 m)

**Year Built:** 1990

**Beam:** 26' 0" (8.18 m)

**Model:** N/A

**Max Draft:** 8' 10" (2.70 m)

**Price:** \$24,395,910.78 USD Subject to change.

**Cruising Speed:** 11 Knots (12.66 MPH)

[See full listing on our website](#)

**Location:** Cap-d'Ail, France

**Max Speed:** 14 Knots (16.11 MPH)

---

# TABLE OF CONTENTS

---

<b>OVERVIEW .....</b>	<b>3</b>
<b>SPECIFICATIONS .....</b>	<b>5</b>
Basic Information .....	5
Dimensions .....	5
Speed, Capacities and Weight .....	5
Accommodations .....	6
Hull and Deck Information .....	6
Engine Information .....	6
<b>GALLERY .....</b>	<b>7</b>
<b>DETAILED DESCRIPTION .....</b>	<b>19</b>
<b>CONTACTS .....</b>	<b>24</b>

## OVERVIEW

---

Launched by Feadship in 1990, EMERALD is a Dutch-built luxury motor yacht that, since her 2021 acquisition, has been comprehensively reimaged into a contemporary superyacht of enduring elegance and impeccable lineage. Conceived by her European owners as a sumptuous home at sea, she underwent a wide-ranging bespoke rebuild at Balk Shipyard in the Netherlands, where a clear vision was translated into meticulous workmanship befitting a world-class private yacht.

Arriving at Balk in October 2021 at 48.6 metres after an earlier extension, EMERALD was lengthened once more to a commanding 50.4-metre LOA, amplifying both her presence and practical capabilities. In collaboration with British studio Design Unlimited, the interior was redrawn with a modern yet timeless sensibility, marrying warmth, layered textures and considered light to create a serene, refined atmosphere across this tri-deck vessel.

The renewed main deck presents a forward-facing master suite accompanied by an adjacent VIP, while four additional guest cabins on the lower deck are laid out to maximise comfort and privacy. An open-plan main saloon flows with quiet harmony, a subtle partition artfully defining the lounge from the dining area. The reconfigured main-deck galley has been upgraded with commercial-grade equipment, optimising service and workflow for prolonged bluewater cruising.

Above, the bridge-deck saloon was extended to enhance indoor-outdoor living, and the enlarged bridge-deck cockpit now carries a single, more capable crane in place of the original pair, streamlining the handling of tenders and water toys; when cleared, the deck becomes an elegant alfresco lounge ideal for relaxed entertaining. The rebuilt and elongated sundeck introduces a generous forward spa pool, intimate seating areas, expansive sunbeds and a well-appointed wet bar, creating an inviting retreat for sunlit days at anchor.

Below decks, the space formerly occupied by the original VIP has been repurposed to elevate operational performance: a best-in-class crew mess, a proper laundry, abundant cold stores and an additional engineer's cabin have been installed, and all crew accommodations have been fully refitted to premium standards, underlining EMERALD's credentials as a serious displacement motor yacht.

Externally, the mast and superstructure arch were redesigned to complement the refreshed profile and to house new systems. A suite of latest-generation navigation equipment, upgraded AV/IT communications and two zero-speed Quantum extendable stabiliser fins significantly enhance comfort and seakeeping, while the engines and generators—new in 2015—have been meticulously serviced. Cloaked in a striking Orion Green hull beneath an Aquila White superstructure, EMERALD is poised for years of effortless cruising.

A finalist at the 2024 Boat International World Superyacht Awards, this 50.4 m custom Feadship blends classic craftsmanship with contemporary engineering to offer a poised and luxurious platform for private voyaging.

# SPECIFICATIONS

---

## Basic Information

---

**Category:**  
Motor yachts

**Year Built:**  
1990

**Model Year:**  
1990

**Country:**  
France

## Dimensions

---

**LOA:**  
165' 0" (50.40 m)

**Max Draft:**  
8' 10" (2.70 m)

**Beam:**  
26' 0" (8.18 m)

## Speed, Capacities and Weight

---

**Cruise Speed:**  
11 Knots (12.66 MPH)

**Water Capacity:**  
4866.05 Gallons

**Max Speed:**  
14 Knots (16.11 MPH)

**Fuel Capacity:**  
14080.37 Gallons

**Gross Tonnage:**  
478 Pounds

## Accommodations

---

**Total Heads:**

2

**Crew Berths:**

11

**Crew Cabin:**

6

## Hull and Deck Information

---

**Hull Material:**

Steel Yachts

**Hull Designer:**

De Voogt Naval Architects

**Deck Material:**

Steel

**Interior Designer:**

Design Unlimited

**Hull Configuration:**

Full Displacement

## Engine Information

---

**Engines:**

2

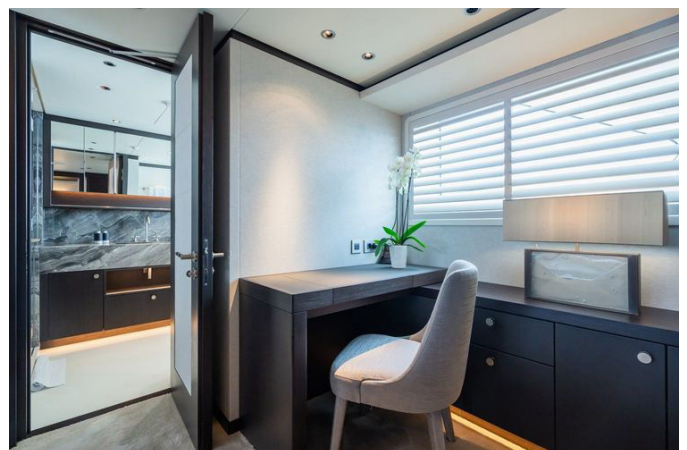
**Fuel Type:**

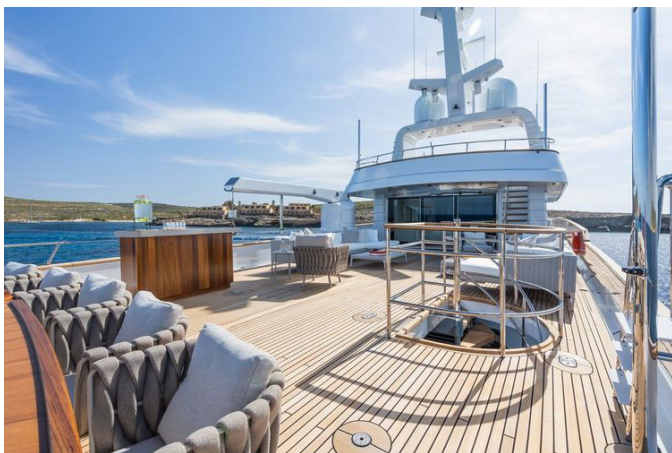
Diesel

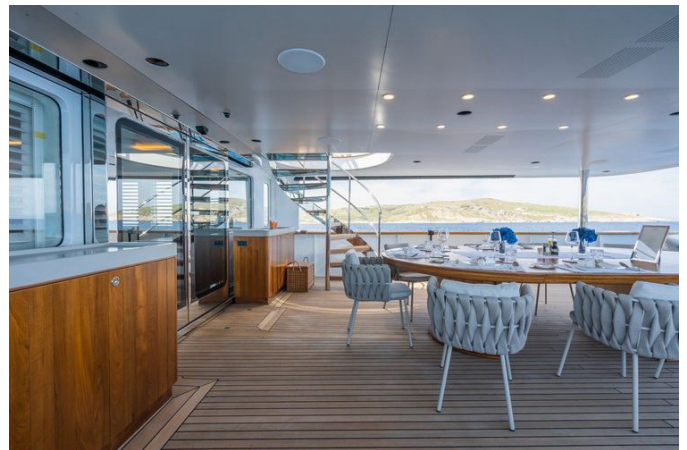
**Manufacturer:**

CAT

# GALLERY









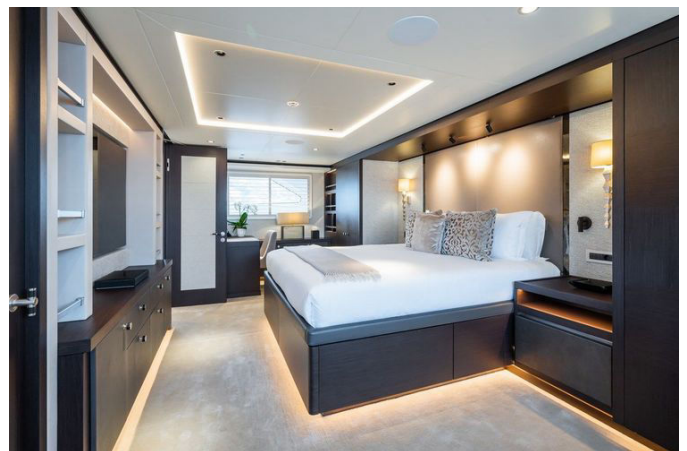


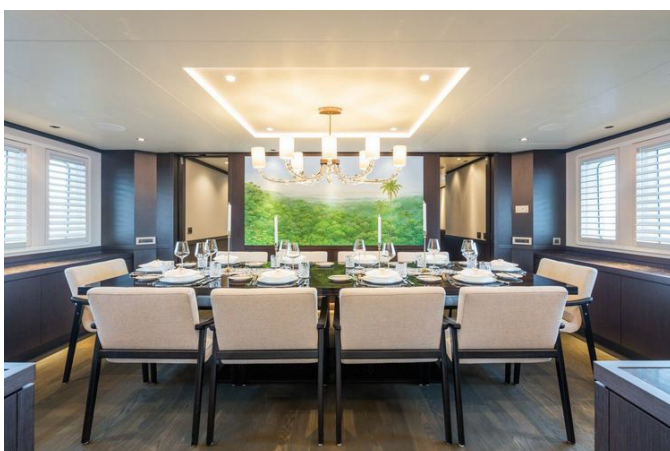
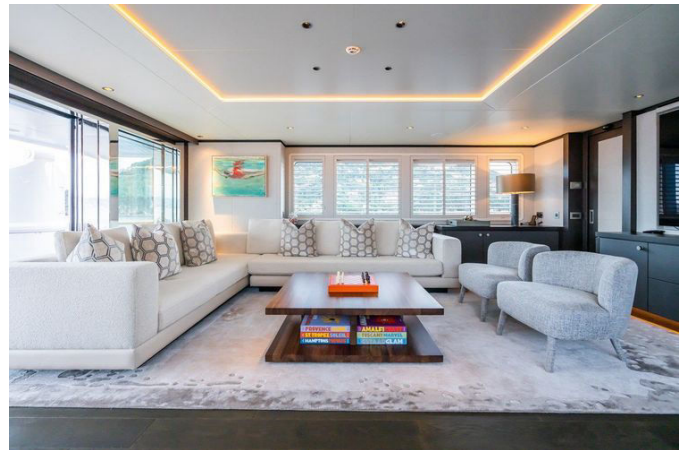














---

# DETAILED DESCRIPTION

---

## Specifications

---

At 50.4m (165' 4") length overall with an 8.18m (26'10") beam and a 2.7m (8' 10") draft to props, this full displacement yacht carries a displacement of 465 tonnes and a gross tonnage of 478 tons, eloquently balancing seagoing solidity with refined presence. Built with a steel hull and an aluminium superstructure, her hull is finished in Jotun Megagloss HG Orion Green while the superstructure wears Jotun Megagloss HG Aquila White, and propulsion is provided by two CAT C32 main engines, each 850 hp/634 kW (part of the 2015 refit), paired to ZF BW251 gearboxes at 4.133:1 to yield a top speed of 14 knots and a serene cruising speed of 11 knots that delivers a remarkable 6200 nautical mile range at that speed, supported by a fuel capacity of 53,300 litres (14,080 US Gals). Electrical power generation is secured by two Kohler 125 kW 125EFOZD generators fitted during the 2015 refit, and guest accommodation welcomes twelve in six cabins—two main deck doubles, two lower deck twins that convert to doubles, and two further lower deck doubles—while the crew are superbly provided for with ten berths in six cabins comprising one upper deck captain's cabin, four lower deck twin bunk cabins, and one engineer's cabin. Hull design and exterior styling originate from De Voogt Naval Architects with thoughtful modifications by Mulder Design and Design Unlimited and an interior rebuild by Design Unlimited, and she is classed Lloyds 100A1 Yacht LMC and flies the Malta CYC 2020 flag.

## Tank capacities (approximate)

---

The yacht's tankage is arranged to maximise autonomy, with diesel oil fuel totaling 53,300 litres, fresh water capacity of 18,420 litres, black water capacity of 3700 litres, grey water capacity of 2333 litres and dirty oil capacity of 3,700

litres, a provisioning profile that supports long passages and independent cruising without compromise.

## Ancillary equipment

---

Stability and manoeuvrability are assured by Quantum QC 1500 HD EX stabilisers with an extending section for at anchor use and a Leroy Somer electric bow thruster rated at 55 kW, model PB 225 M4, while onboard climate is managed by four Climma CWS Inverter DC130 units each delivering 130,000 BTU, complemented by a Veco Tattamento Aria air treatment system rated at 1500 m<sup>3</sup>/h; freshwater independence is secured by dual watermakers — one HEM40 and one Peter Taboada SW Y 30/52 — and wastewater is treated by a Headhunter TW HMX 6001 LP sewage treatment plant, together offering a robust suite of systems that underpin comfort and autonomy in any cruising scenario.

## Electrical & monitoring

---

Integrated yacht monitoring and control are entrusted to Bonning, while shore services are streamlined by a Magnus SP200 shore power converter and a Glendinning CM 8 shorepower cablemaster; illumination throughout combines efficient interior and exterior LED lighting with dramatic Ocean LED F Series underwater lights, and security and situational awareness are delivered by a comprehensive CCTV suite of fifteen cameras and a FLIR M332 thermal unit, with underwater integrity protected by Cathelco Cathshield cathodic protection to ensure both operational resilience and guest peace of mind.

## Deck equipment

---

On deck stainless steel Steen 59.46 capstans rated at 3 kW handle all line work

with quiet authority, while handling of toys and tenders is effortless thanks to an Atlas manual davit on the foredeck sized for Sea Doo's and the rescue tender and a Lagendijk LT YC 30 3 tender crane with a 3000 kg capacity; boarding and waterside living are elevated by a TE Marine passerelle and an Opacmare hydraulic transformer swim platform, sail canopies with dedicated supports shade the upper deck aft and the sun deck, and for ultimate relaxation a large spa bath with overflow crowns the sundeck experience.

## Navigation systems

---

The bridge is equipped to commercial standards with dual Sperry Marine Vision Master radars — an S Band unit (65612A/NL) and an X Band unit (65606/A/NL) — and primary navigation driven by a Sperry Marine VisionMaster FT ECDIS (65900012) with an identical Sperry Marine VisionMaster FT unit as backup (65900012); depth and speed are tracked by a Skipper ESN200 SB echo sounder paired with a Skipper ETN050XG transducer at 50 Hz and a Skipper CD402CU SC speed log, steering is governed by a Sperry Marine Navipilot 4500N autopilot referenced by a Sperry Marine CompassNet NAVIGAT 2500 gyro compass, a Sperry Marine SIMRAD P3007 satellite compass and a Sperry Marine JUPITER magnetic compass, and communications include a Thrane & Thrane Sailor 6004 control panel with Sailor 6390 Navtex receiver, Sailor CU5100 MF/HF and Sailor 6222 VHF with an additional Sailor 6222 unit as HF secondary, delivering a bridge fitout that meets demanding commercial and private safety standards.

## White goods

---

In the main deck galley professional grade appliances ensure flawless service: a Schott Ceran induction cooktop anchors the line beside a Convotherm OES 6.10 mini combi steam oven and a Diamond E7/FB8 oven, with hot dishes held

perfectly in an American permanent ware FD 66H unit; a Bartscher IMBISS I deep fat fryer, compact IMC M400 compactor, Foster FSL400H fridge, Scotsman EC47 EcoX ice machine and Hobart FX 10B dishwasher complete a chef ready workspace, and for pristine linens the laundry is equipped with two Miele PWM 907 washing machines and two Miele PDR 908 HP tumble dryers, delivering professional galley and laundry capability to match the yacht's hospitality standards.

## Tenders & toys

---

A versatile inventory of tenders and toys promises endless on water adventure: the Zodiac Cadet 310 ALU rescue tender stands ready alongside two SEA DOO RXT300 XRS PWCs and three SR Series Sea Bobs, and the watersports arsenal spans a Lift3 Efoil and an Esurf electric surfboard, two inflatable kayaks, two inflatable paddle boards, water skis and a wakeboard, assorted Jobe towable toys and a jellyfish pool; shore side mobility and exploration are enhanced by two G4 Gocycles, with snorkeling equipment and assorted child and adult buoyancy aids ensuring safe enjoyment for all ages.

## October 2021 – February 2023 refit notes

---

Between October 2021 and February 2023 the yacht underwent a comprehensive and transformative refit in which the interior was completely stripped out and reimaged by Design Unlimited, introducing two main deck cabins (Master and VIP) and four lower deck guest cabins, enlarging the upper deck saloon to create a more expansive social hub, and reconfiguring crew spaces to add an additional engineer's cabin and a generous crew mess with a walk in fridge and freezer on the lower deck; back of house capability was elevated with a new laundry and a completely new commercial galley, naval modifications included a hull extension bringing the overall length to 50.4m

plus extensions to the sun deck and upper deck aft, and at anchor comfort was revolutionised by new Quantum extending fin stabilisers for both underway and zero speed operation. The bridge received a completely new navigation equipment installation, the yacht gained a new audio visual and IT fitout plus a new satellite TV system and satellite communications including Starlink, exterior refinements included selective teak refresh, a new spa bath on the sundeck, a complete reconfiguration of the exterior decks and an additional stairway linking the main deck aft to the upper deck aft, and all engineering not replaced was serviced up to date with selected exterior elements restyled, a new arch and mast and a full repaint of hull and superstructure, delivering a yacht that now presents as a modern, comfortable and technically upgraded superyacht ready for demanding itineraries.

# CONTACTS

---

Shestakov Yacht Sales is a brokerage company specializing in the sale and service of yachts worldwide. The company offers services for buying and selling both new and used motor yachts, sailing vessels, and luxury superyachts. They also provide yacht registration, insurance, technical maintenance, crew selection, and charter organization services across the U.S., Canada, Latin America, the Caribbean, and the Bahamas.

The founder and lead broker of the company is Andrey Shestakov, a licensed and certified expert with extensive experience in marine engineering and shipbuilding.

The company has an extensive network of partnerships with major yacht manufacturers worldwide and provides services in multiple languages, including Russian, Ukrainian, Spanish, and English. The office is in Dania Beach, Florida, USA.

For more information and to view available yachts, you can visit the company's official website: <https://shestakovyachtsales.com>

## Contact details

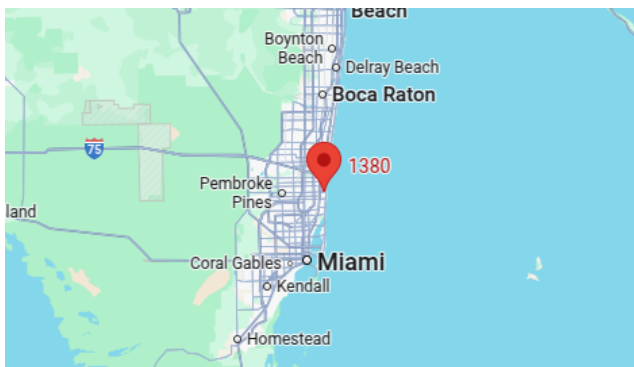
---

**Phone:** +1(954)274-4435

**Email:** [andrey@shestakovyachtsales.com](mailto:andrey@shestakovyachtsales.com)

## Address

---



1380 Weeping Willow Way, Hollywood,  
Florida 33019