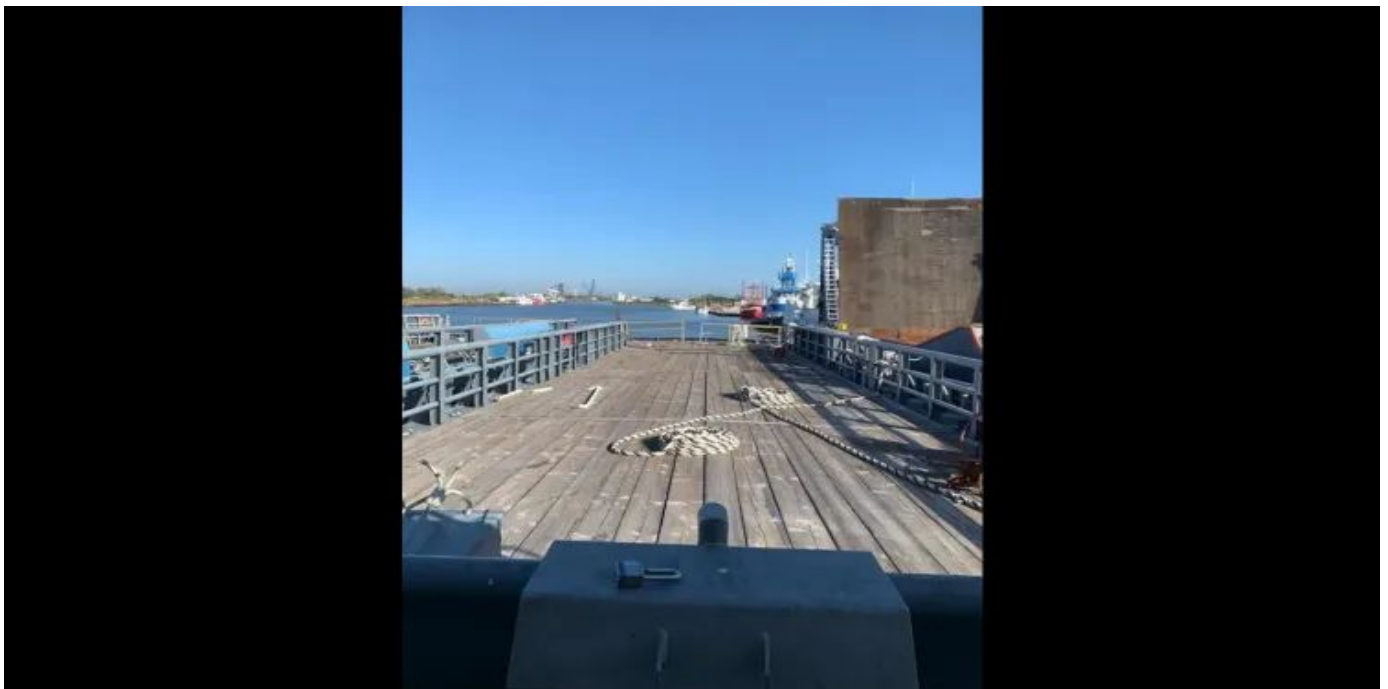


1991 COMMERCIAL 170 CREW BOAT - CUSTOM



Builder: [CUSTOM](#)

LOA: 170' 0" (51.82 m)

Year Built: 1991

Beam: 30' 0" (9.14 m)

Model: 170 Commercial Crew Boat

Max Draft: 21' 1" (6.42 m)

Price: \$1,050,001 USD Subject to change.

Cruising Speed: 22 Knots (25.32 MPH)

[See full listing on our website](#)

Location: Merritt Island, United States

Max Speed: 24 Knots (27.62 MPH)

TABLE OF CONTENTS

OVERVIEW 3

SPECIFICATIONS 4

 Basic Information 4

 Dimensions 4

 Speed, Capacities and Weight 4

 Accommodations 4

 Hull and Deck Information 5

 Engine Information 5

GALLERY 6

CONTACTS 13

OVERVIEW

Fresh to the market, this commercial passenger yacht presents an expansive, clear 95' x 25' deck, carries USCG Subchapter T compliance with a current USCG Certificate of Inspection, notes fuel consumption of about 200 per hour, and is fitted with twin Cummins 6BT generators.

SPECIFICATIONS

Basic Information

Model Year:
1991

Country:
United States

Year Built:
1991

Dimensions

LOA:
170' 0" (51.82 m)

Max Draft:
21' 1" (6.42 m)

Beam:
30' 0" (9.14 m)

Speed, Capacities and Weight

Cruise Speed:
22 Knots (25.32 MPH)

Max Speed:
24 Knots (27.62 MPH)

Accommodations

Sleeps:
6

Total Heads:
1

Hull and Deck Information

Hull Material:

Fiberglass and Plastic Yachts

Hull Designer:

N/A

Deck Material:

Fiberglass

Interior Designer:

N/A

Hull Configuration:

N/A

Engine Information

Engines:

1

Engine Type:

Inboard

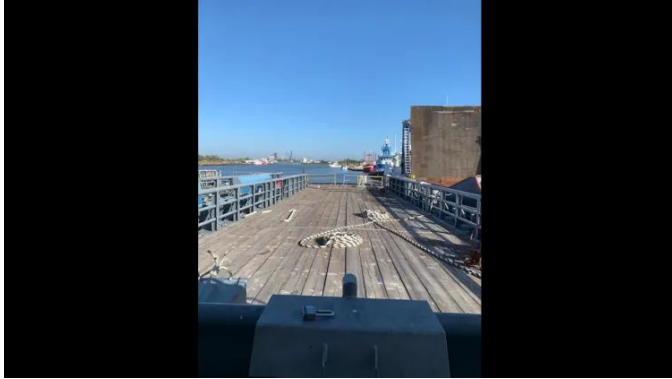
Manufacturer:

Cummins

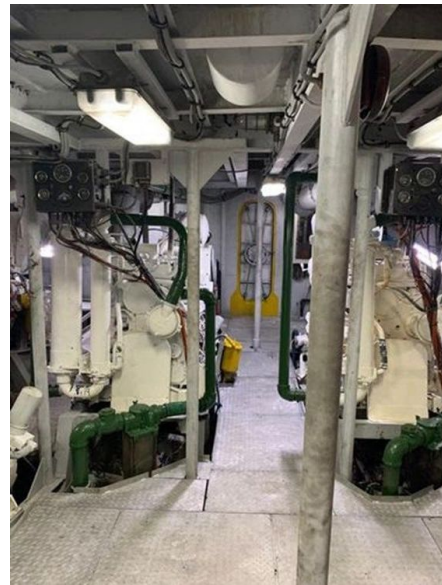
Fuel Type:

Diesel

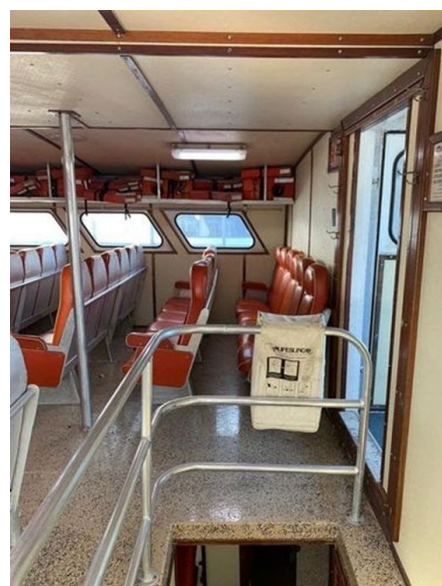
GALLERY



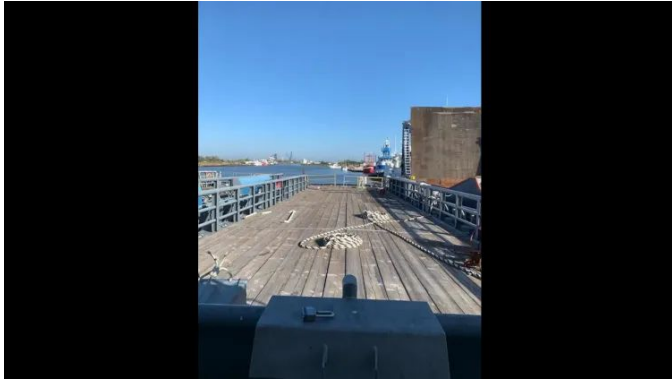












CONTACTS

Shestakov Yacht Sales is a brokerage company specializing in the sale and service of yachts worldwide. The company offers services for buying and selling both new and used motor yachts, sailing vessels, and luxury superyachts. They also provide yacht registration, insurance, technical maintenance, crew selection, and charter organization services across the U.S., Canada, Latin America, the Caribbean, and the Bahamas.

The founder and lead broker of the company is Andrey Shestakov, a licensed and certified expert with extensive experience in marine engineering and shipbuilding.

The company has an extensive network of partnerships with major yacht manufacturers worldwide and provides services in multiple languages, including Russian, Ukrainian, Spanish, and English. The office is in Dania Beach, Florida, USA.

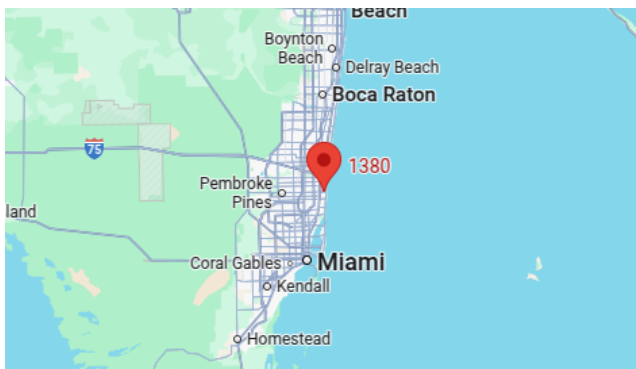
For more information and to view available yachts, you can visit the company's official website: <https://shestakovyachtsales.com>

Contact details

Phone: +1(954)274-4435

Email: andrey@shestakovyachtsales.com

Address



1380 Weeping Willow Way, Hollywood,
Florida 33019