

## ARMADA - COLUMBUS YACHTS



**Builder:** [Columbus Yachts](#)

**LOA:** 176' 0" (53.70 m)

**Year Built:** 2011

**Beam:** 33' 0" (10.20 m)

**Model:** C 177

**Max Draft:** 10' 10" (3.30 m)

**Price:** \$17,580,291.19 USD Subject to change.

**Cruising Speed:** 16 Knots (18.41 MPH)

[See full listing on our website](#)

**Location:** Viareggio, Italy

**Max Speed:** 18 Knots (20.71 MPH)

# TABLE OF CONTENTS

**OVERVIEW ..... 3**

**SPECIFICATIONS ..... 4**

    Basic Information ..... 4

    Dimensions ..... 4

    Speed, Capacities and Weight ..... 4

    Accommodations ..... 5

    Hull and Deck Information ..... 5

    Engine Information ..... 5

**GALLERY ..... 6**

**DETAILED DESCRIPTION ..... 11**

**CONTACTS ..... 13**

## OVERVIEW

---

Delivered in 2011 from Palumbo's distinguished Italian shipyard, this 54-metre Columbus 177 emerges as a consummate long-range motor yacht, having completed its comprehensive 10-year survey in 2021. With an impressive 838 GT of volume, she marries Sergio Cutolo's Hydro-Tech exterior vocabulary to Tommaso Spadolini's refined interiors, the sculpted external silhouette flowing into serene, highly liveable rooms. The hull is steel with an aluminium superstructure, and she holds the distinction of being the yard's inaugural Columbus as well as the first to attain the Green Plus notation — a landmark for the marque. Proven bluewater credentials are underlined by a 5,000 nm ocean-going range and full ABS classification—A1, Commercial Yachting Service, AMS, ACCU—confirming robust standards of safety and construction. Expansive teak decks sweep aft to a sun deck appointed with a Jacuzzi, while a full beam owner's domain and six staterooms, including a full-beam Owner's suite with private balcony and a bridge-deck VIP, ensure privacy and comfort for up to 12 guests attended by 13 crew. Some 350 sqm of interiors are clothed in Italian marble, rich timbers and soft leathers. A tri-deck displacement superyacht, she balances elegance, efficiency and poise, remaining a timeless, ocean-ready long-range cruiser.

# SPECIFICATIONS

---

## Basic Information

---

**Category:**  
Motor yachts

**Year Built:**  
2011

**Model Year:**  
2011

**Country:**  
Italy

## Dimensions

---

**LOA:**  
176' 0" (53.70 m)

**Max Draft:**  
10' 10" (3.30 m)

**Beam:**  
33' 0" (10.20 m)

## Speed, Capacities and Weight

---

**Cruise Speed:**  
16 Knots (18.41 MPH)

**Water Capacity:**  
8664.84 Gallons

**Max Speed:**  
18 Knots (20.71 MPH)

**Fuel Capacity:**  
31489.31 Gallons

**Gross Tonnage:**  
838 Pounds

## Accommodations

---

**Total Heads:**

6

**Crew Cabin:**

7

## Hull and Deck Information

---

**Hull Material:**

Steel Yachts

**Hull Designer:**

N/A

**Deck Material:**

Steel

**Interior Designer:**

N/A

**Hull Configuration:**

N/A

## Engine Information

---

**Engines:**

2

**Engine Type:**

Inboard

**Manufacturer:**

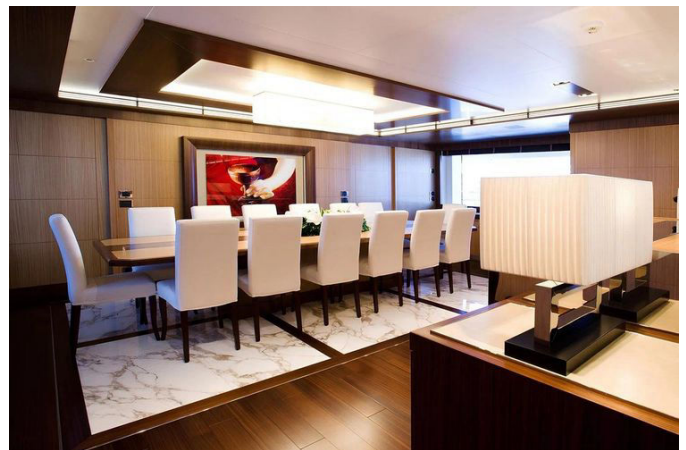
MTU

**Fuel Type:**

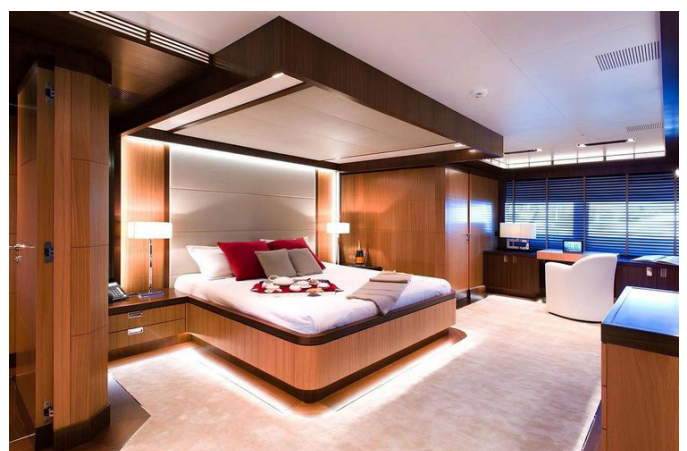
Diesel



# GALLERY



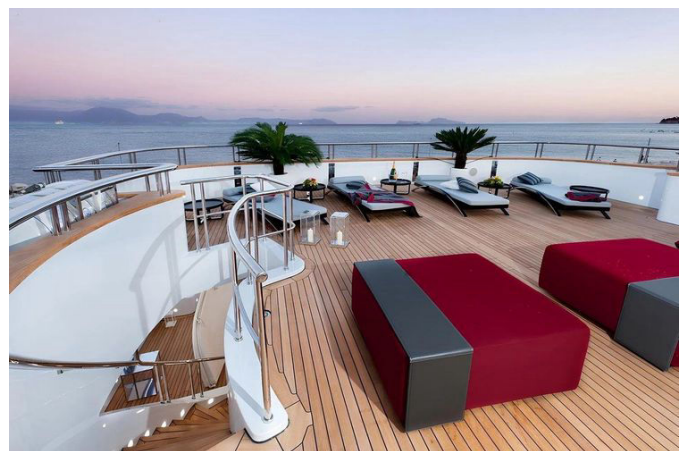




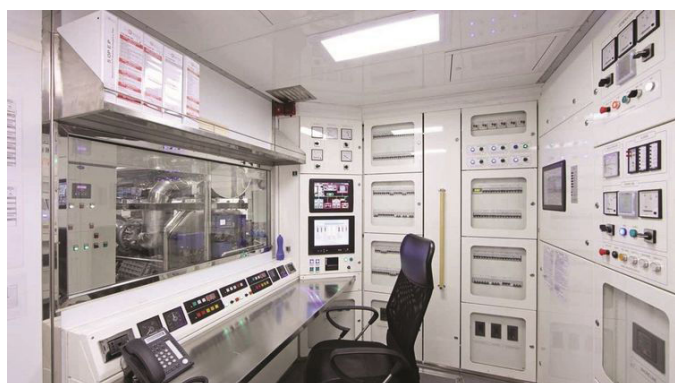
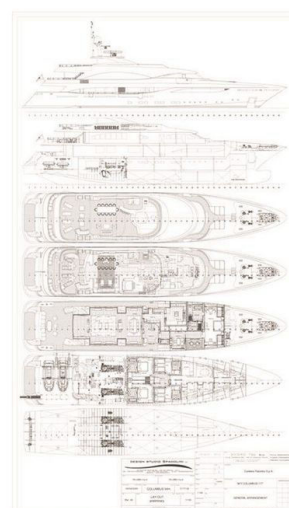












# DETAILED DESCRIPTION

---

## Accommodations

---

She welcomes up to 14 guests across six spacious staterooms, each with en suite facilities for complete privacy and comfort, arranged to suit extended families and entertaining in style; the main deck is graced by a full beam Master suite that offers generous proportions and privacy, the upper bridge deck features a generous VIP suite for elevated views, and the lower deck presents two double cabins alongside two twin cabins to create a versatile, well zoned guest layout that balances social areas with intimate retreats.

## Machinery

---

Power is delivered by twin MTU 16V 4000 M60 engines, two units of 2,360 HP each, showing 3,200 engine hours as of June 2025 and providing an economical fuel consumption of 350 lt / hr at eco speed; ship's electrical power is supplied by two Caterpillar C9 generators rated at 175 kW each with 20,000 hours as of June 2025 and is backed by a Caterpillar C 4.4 emergency generator rated at 80 kW, while underway comfort is enhanced by fin stabilizers that reduce roll and improve onboard livability.

## Key features

---

A full ten year survey completed in 2021 underscores her pedigree and condition, while her generous 838 GT volume and approximately 350 sqm of interior space deliver an impressive sense of scale and onboard freedom; the exterior, penned by Sergio Cutolo / Hydro Tech, is complemented by expansive decks crowned with a sundeck Jacuzzi, and accommodation is arranged to host up to 14 guests in six staterooms including a full beam



Owner's suite with a private balcony and a VIP suite on the bridge deck, supported by dedicated quarters for 13 crew to ensure seamless service—importantly, as the first Columbus yacht to receive the Green Plus class notation she pairs distinguished design with forward thinking sustainability.

# CONTACTS

---

Shestakov Yacht Sales is a brokerage company specializing in the sale and service of yachts worldwide. The company offers services for buying and selling both new and used motor yachts, sailing vessels, and luxury superyachts. They also provide yacht registration, insurance, technical maintenance, crew selection, and charter organization services across the U.S., Canada, Latin America, the Caribbean, and the Bahamas.

The founder and lead broker of the company is Andrey Shestakov, a licensed and certified expert with extensive experience in marine engineering and shipbuilding.

The company has an extensive network of partnerships with major yacht manufacturers worldwide and provides services in multiple languages, including Russian, Ukrainian, Spanish, and English. The office is in Dania Beach, Florida, USA.

For more information and to view available yachts, you can visit the company's official website: <https://shestakovyachtsales.com>

## Contact details

---

**Phone:** +1(954)274-4435

**Email:** [andrey@shestakovyachtsales.com](mailto:andrey@shestakovyachtsales.com)

## Address

---



1380 Weeping Willow Way, Hollywood,  
Florida 33019