

AFTER YOU - HEESEN YACHTS



Builder: [Heesen Yachts](#)

LOA: 180' 0" (55 m)

Year Built: 2011

Beam: 30' 0" (9.40 m)

Model: CUSTOM

Max Draft: 9' 10" (3 m)

Price: \$37,620,965.87 USD Subject to change.

Cruising Speed: 17 Knots (19.56 MPH)

[See full listing on our website](#)

Location: La Ciotat, France

Max Speed: 25 Knots (28.77 MPH)

TABLE OF CONTENTS

OVERVIEW	3
SPECIFICATIONS	4
Basic Information	4
Dimensions	4
Speed, Capacities and Weight	4
Accommodations	5
Hull and Deck Information	5
Engine Information	5
GALLERY	6
DETAILED DESCRIPTION	16
CONTACTS	22

OVERVIEW

As the largest fully custom semi-displacement yacht ever crafted by Heesen, AFTER YOU embodies both monumental scale and forward-looking refinement. Stretching 55 meters with an internal volume just shy of 800GT, she underwent an inspired interior transformation by designer Mark Berryman during a 2022 refit, while her OMEGA-painted exterior now gleams in a deep, sophisticated blue.

Designed to welcome 12 guests across six sumptuous staterooms, AFTER YOU places a full-beam master on the main deck, complete with balconies to port and starboard and a spacious lounge and dressing area that read like a private suite at sea. The lower-deck VIP is likewise full-beam and offers the flexibility to convert into two double cabins, providing adaptable accommodation for owners and guests.

Generous floor-to-ceiling glazing suffuses the interior with natural light, accentuating the chic main saloon, where a refined bar invites convivial evenings. On the bridge deck, a saloon centered around an iconic self-playing piano flows aft into a glass-enclosed dining area, creating an intimate indoor dining experience that remains visually connected to the horizon.

The exterior is equally theatrical: a main-deck pool comfortably seats ten and spills into a dramatic waterfall feature, while the sundeck presents a second Jacuzzi, a dedicated gym arrangement and a full spa complex with sauna, hammam and massage room — every amenity arranged for effortless leisure. Built on a semi-displacement hull, AFTER YOU delivers spirited performance with a top speed of 25 knots and a smooth cruising pace of 17 knots. Available for sale in her current boat location, this yacht represents an exceptional chance to acquire a vessel that marries luxurious refinement with genuine seafaring capability.

SPECIFICATIONS

Basic Information

Category:
Motor yachts

Year Built:
2011

Model Year:
2011

Country:
France

Dimensions

LOA:
180' 0" (55 m)

Max Draft:
9' 10" (3 m)

Beam:
30' 0" (9.40 m)

Speed, Capacities and Weight

Cruise Speed:
17 Knots (19.56 MPH)

Water Capacity:
7925.16 Gallons

Max Speed:
25 Knots (28.77 MPH)

Fuel Capacity:
33021.51 Gallons

Gross Tonnage:
781 Pounds

Accommodations

Total Heads:

2

Crew Berths:

7

Hull and Deck Information

Hull Material:

Aluminum Yachts

Hull Designer:

Heesen

Deck Material:

Aluminum

Interior Designer:

Ken Freivokh, Reverberi Design

Hull Configuration:

Semi-Displacement

Engine Information

Engines:

2

Engine Type:

Inboard

Manufacturer:

MTU

Fuel Type:

Diesel

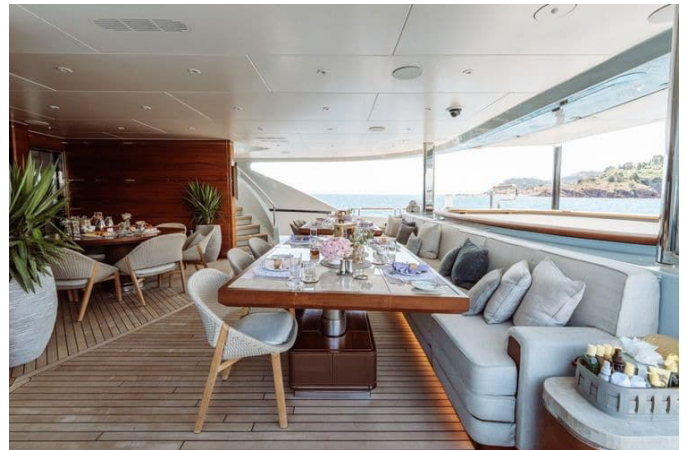
GALLERY









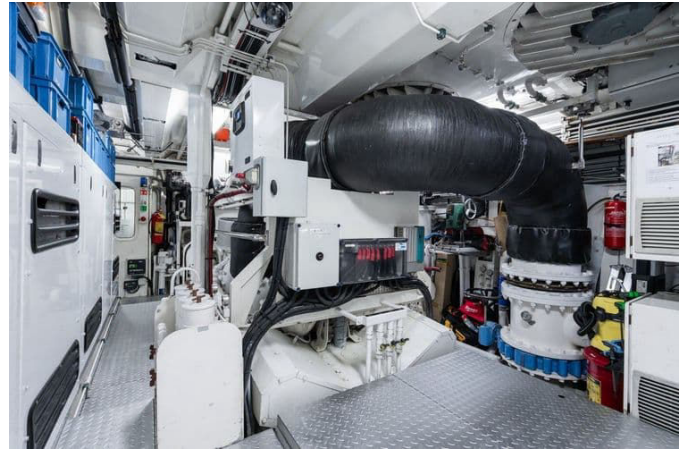












DETAILED DESCRIPTION

Specifications

This magnificent yacht, measuring an impressive 55 meters (180 feet 6 inches) in length, is a testament to luxury and engineering excellence, offering a generous beam of 9.4 meters (30 feet 11 inches) and a draft of 3 meters (9 feet 11 inches) that together provide a spacious, stable platform for both refined relaxation and bold adventure. Delivered in 2011 by the renowned Heesen shipyard and comprehensively refitted in 2022, she unites the finest names in naval design and interior styling: naval architecture by Vripack and Heesen, an elegant exterior by Omega Architects and an interior originally by Ken Freivokh and Michela Reverberi, sensitively refitted by Mark Berryman to blend contemporary comfort with timeless sophistication. Built with a semi-displacement aluminium hull and superstructure, the yacht presents a striking navy blue hull contrasted with a white superstructure, is flagged in the Cayman Islands and classified by Bureau Veritas, and is MCA compliant, all assuring the highest standards of safety and performance. Heli-capable for a Eurocopter EC 135 or similar, she grants unparalleled access to remote destinations and is driven by two MTU 20V4000M93L engines, each producing 4300 kW at 2100 rpm, enabling a comfortable cruising speed of 17 knots and a top speed of 25 knots. Fuel and water capacities support extended voyages with diesel fuel and water storage of 30,000 litres (7,925 US gallons) and holding tanks of 9,843 litres, while luxurious accommodation includes six cabins for up to twelve guests: a sumptuous master cabin with a king-sized bed and an additional double on the main deck, and on the lower deck a versatile VIP with a queen bed convertible into two doubles, a further double cabin and a twin cabin with two single beds. The crew quarters comprise six crew cabins plus a captain's cabin, accommodating a total of thirteen crew to ensure

exceptional service and meticulous attention to every detail, making this yacht not merely a vessel but a floating masterpiece delivering an unparalleled experience on the water.

Machinery

The yacht is driven by two robust MTU 20V 4000 M93L diesel engines, each delivering an impressive 4,300 kW, with the starboard engine having logged 6,558 hours and the port engine 9,627 hours, a record that speaks to their proven reliability and endurance; these powerplants are coupled to ZF 23560C gearboxes with ZF Autocontroll, turning twin screw propellers for optimal propulsion efficiency. Onboard electrical generation comprises two 175 kW Kilo Pak generators and an additional 80 kW Kilo Pak generator, with the forward generator showing 592 hours and the aft generator 27,139 hours of operation, consuming approximately 400 litres of fuel per day and delivering 400V system power; a shore power converter provides seamless adaptation to 110V, 240V and 400V at 50–60 Hz with a 100 kW capacity. Battery architecture is engineered for resilience: each main engine uses six 12V 50 Ah batteries for starting, the service battery bank consists of six 12V 200 Ah batteries paralleled to provide a 24V 600 Ah capacity, emergency power is supported by a 400 Ah system with dedicated emergency start batteries EMG 1 and EMG 2. Climate comfort is assured by a modern air conditioning arrangement, including a chiller unit converted in 2022 to MC3-CH-C H&H and two fresh air control units converted to MC3-FA-C positioned at AHU1 on the bridge deck port side and AHU2 forward on the bridge deck. Additional systems include VT Naiad 820 trim tabs and stabilizers with two fins of 4.66 square metres providing zero-speed stabilization, a hydraulically driven HRP 120Kw bow thruster and a Sperry Marine steering system for precise manoeuvring, fuel treatment via an Alpha Laval separator and filtration system, a Hamann sewage treatment plant, fresh water supply through a HEM cold water system and bilge filtration

by an RWO system. Lube oil capacity is 2,000 litres (528 US gallons) with an equal capacity reserved for waste oil, and for convenience an elevator serves the lower deck, main deck and bridge deck, though it does not extend to the sundeck, together delivering a comprehensive and dependable machinery arrangement that underpins luxurious, trouble-free operation.

Communication and navigation systems

The yacht is fitted with an advanced and fully integrated suite of communication and navigation systems that guarantee reliable connectivity and exacting navigational control; voice and long-range communication is provided by an Inmarsat C SAT Com installation complemented by a Panasonic telephone system and a Commander 1500 SSB, while local VHF communications are handled by a Sailor RT 5022 DSC VHF and onboard telephony is extended with a Gigaset cellular system and an SQS PS – 1650H intercom for complete internal communications. Navigation is delivered through a comprehensive array of professional equipment, including two Furano radars—one Band X and one Band S—for broad radar coverage, a Sperry Marine SN. 1032-125 gyrocompass paired with a Northrop Grumman Sperry Marine magnetic compass for precise heading information, a Sperry Marine Navpilot 4000 autopilot for automated route control and a Furano FE-700 depth sounder for accurate depth data; situational awareness is enhanced by a FLIR M400 night vision system and a SAAB GPS, with navigation further supported by an ECDIS chart plotter, Furano DS80 wind/speed log and Furano NX-700 Navtex, and advanced chart plotting via dual TimeZero systems with integrated WASSP technology. Entertainment and onboard control are unified under a Crestron GUI accessible on iPads, delivering seamless access to Apple TV, a Plex Server, Kaleidoscope, Direct TV and IP TV, and the visual experience is outstanding with a 100-inch Sony FW-100BZ40J in the main salon with RGB lighting, an 85-inch Sony FW-85BZ40H on the bridge deck salon, a

75-inch Sony FW-75BZ40H in the master stateroom and 43-inch Sony screens in the guest staterooms, plus two 50-inch Sony TVs on the sundeck and a 50-inch Sony on the aft deck with RGB lighting and four disco lights featuring a Sound 2 light function. Connectivity is future-proofed with two Starlink Maritime antennas and two Intellian V130NX VSAT systems upgradable to GEO, MEO and LEO, a TVRO system including an Intelliant130W and a BlueSIM dome connected via a balance router providing 4G/5G, while audio is delivered through Bowers & Wilkins and James Loudspeakers with an integrated Party Mode and Karaoke system that synchronises sound, microphone, visual and lighting, and Cat7 cabling throughout the yacht provides capacity for future technological enhancements.

Galley & laundry equipment

The galley and laundry facilities are specified to professional standards, ensuring culinary excellence and effortless service; the main galley is equipped with a Leventi oven, a Pakojet deep fryer and two Convotherm Combi Steamer OES6.10 mini steam ovens, four MS-I-20EM induction cooktops and a Panasonic NE-1643 microwave, with refrigeration and freezing handled by Heinen Hopman and dishwashing by a Miele dishwasher, and meal distribution facilitated by a BKG dumbwaiter serving the lower deck, main deck and bridge deck. The crew galley and mess include a Miele microwave and dishwasher, a hot water boiler and a water filtration system to ensure reliable provisions for the team, complemented by a Juia Giga 10 coffee machine, a Eurocave V-PREM-L wine fridge and six mQuvee WineCave 800 60D units to maintain an extensive wine selection at ideal temperatures, while ice provision is covered by five Hoshizaki IM-30CWNE-HC ice-makers. Laundry operations are supported by three Miele Pro washing machines and three Miele Pro tumble dryers, forming a complete, professional-grade arrangement that sustains the highest standards of hospitality at sea.

Tenders & toys

This yacht is a platform for endless enjoyment and exploration, presented with an extensive and contemporary inventory of tenders and water toys to suit every taste; she carries a 2024 VIKAL 7.5 m limo tender and a 2022 5.5 m Castoldi Jet rescue tender, is fully equipped for diving with an onboard dive compressor and complete dive gear for up to twelve guests, and offers exhilarating ride options including four 2024 SeaDoo GTX300 jet skis and three 2022 Seabob F5SRs. For electric water sports enthusiasts there are four Lift Electric E-Foil boards and two Ravic Awake S electric surfboards, while waterskiing, wakeboarding, snorkeling gear and full fishing tackle are provided both on the mothership and tender, complemented by a tuna tower and outriggers for serious sportfishing. The yacht's inflatables feature a custom dock and waterpark configured to carry four jet skis, four electric boards, seabobs, kayaks and stand-up paddleboards, enhanced by a custom inflatable prism tower and a bar/lounge area and accompanied by inflatable donuts for casual fun. Fitness is supported by a fully equipped exercise area with a step machine, cross trainer, Technogym balls, a weights set, resistance cables and yoga mats, and launch and recovery are made effortless with a crane rated to a safe working load of 1.5 tonnes, ensuring every waterborne pursuit can be pursued with safety, style and convenience.

Deck equipment

Deck equipment is assembled to deliver secure operation, easy guest access and elegant presentation; the anchoring system centres on a Staal Art CAR 37-24ED anchor windlass supported by aft warping capstans also from Staal Art, while heavy-duty Ship Equipment Center anchors weighing 373 kilograms apiece are matched with Rema Holland anchor chains of 24 mm diameter and two sets of five shackles for added redundancy. Tender handling and

embarkation are facilitated by Hydromar boat crane and davits, a Hydromar passerelle for seamless access, a Hydromar swimming platform and swim ladder and a side boarding ladder, while OceanLED underwater lights fitted by Huisman create a striking nocturnal ambiance and searchlights ensure visibility and safety after dark; for onboard housekeeping a garbage fridge is included to manage waste efficiently, combining practical functionality with refined deck-level luxury.

Safety & fire protection

Safety and fire protection are addressed with a full complement of professional-grade systems, providing both vigilant security and proven fire suppression; surveillance is managed by a Samsung SHR-6162 CCTV system with FLIR cameras and Hatteland monitors to keep every area under watch, and fire safety is anchored by a Hi-Fog fire control system together with strategically placed Jockel fire extinguishers and a Tyco Minerva T2000 alarm system for immediate alerting. Life-saving equipment is comprehensive and ready for rapid deployment, including four Zodiac ZMEC 16 life rafts, life rings, life jackets, immersion suits and lifebuoys, plus Jotron EPIRBs and SART Jotron T20 emergency locators and Comet flares for signaling, while a full suite of commercial-grade medical equipment ensures preparedness for any onboard medical contingency. Complementing safety, the yacht offers spa facilities from KLAFS including a hammam and sauna and a massage room equipped with a fixed massage bed, a foldable massage bed and two massage chairs, blending wellbeing and security to ensure guests enjoy both peace of mind and total relaxation.

CONTACTS

Shestakov Yacht Sales is a brokerage company specializing in the sale and service of yachts worldwide. The company offers services for buying and selling both new and used motor yachts, sailing vessels, and luxury superyachts. They also provide yacht registration, insurance, technical maintenance, crew selection, and charter organization services across the U.S., Canada, Latin America, the Caribbean, and the Bahamas.

The founder and lead broker of the company is Andrey Shestakov, a licensed and certified expert with extensive experience in marine engineering and shipbuilding.

The company has an extensive network of partnerships with major yacht manufacturers worldwide and provides services in multiple languages, including Russian, Ukrainian, Spanish, and English. The office is in Dania Beach, Florida, USA.

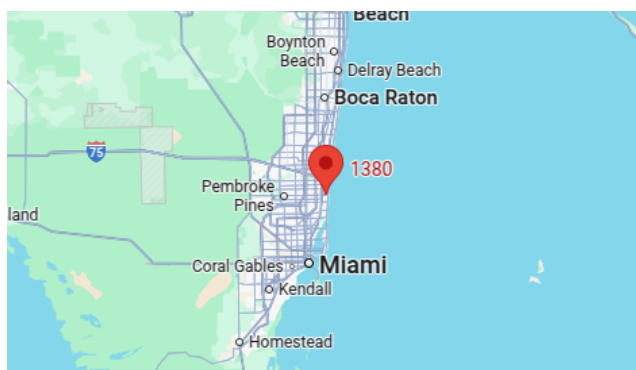
For more information and to view available yachts, you can visit the company's official website: <https://shestakovyachtsales.com>

Contact details

Phone: +1(954)274-4435

Email: andrey@shestakovyachtsales.com

Address



1380 Weeping Willow Way, Hollywood,
Florida 33019