

STEEL - PENDENNIS



Builder: [PENDENNIS](#)

LOA: 180' 0" (54.90 m)

Year Built: 2009

Beam: 32' 0" (9.80 m)

Model: N/A

Min Draft: 9' 2" (2.80 m)

Price: \$34,711,191.12 USD Subject to change.

Max Draft: 10' 2" (3.10 m)

[See full listing on our website](#)

Location: Livorno, Italy

Cruising Speed: 12 Knots (13.81 MPH)

Max Speed: 15 Knots (17.26 MPH)

TABLE OF CONTENTS

OVERVIEW	3
SPECIFICATIONS	4
Basic Information	4
Dimensions	4
Speed, Capacities and Weight	5
Accommodations	5
Hull and Deck Information	5
Engine Information	6
GALLERY	7
DETAILED DESCRIPTION	14
CONTACTS	16

OVERVIEW

M/Y STEEL is a 55-metre explorer superyacht by Pendennis, conceived for true transoceanic range and assured performance in varied sea states. Her steel hull and ice-class notation testify to a priority on safety and dependability, while a comprehensive 2025 refit underscores meticulous upkeep and turn-key readiness. Proven across extended passages, she is engineered for autonomy and long-duration bluewater cruising befitting an expedition yacht, delivering the confidence and capability required for remote, long-haul voyaging.

Inside, the decor favors a timeless, club-like refinement that recalls classic gentlemen's club sensibilities, with enclosed lounges and an overarching emphasis on discretion and seclusion. Luxurious amenities — including a heated counter-current spa pool, a dedicated wine cellar and an adjacent cigar lounge — elevate life on board, seamlessly uniting the rugged capability of an explorer yacht with the poise and polish of a luxury motor yacht.

SPECIFICATIONS

Basic Information

Category:
Motor yachts

Year Built:
2009

Sub category:
Motor Yacht

Country:
Italy

Model Year:
2009

Dimensions

LOA:
180' 0" (54.90 m)

Beam:
32' 0" (9.80 m)

Min Draft:
9' 2" (2.80 m)

Max Draft:
10' 2" (3.10 m)

Speed, Capacities and Weight

Cruise Speed:

12 Knots (13.81 MPH)

Water Capacity:

5500.06 Gallons

Max Speed:

15 Knots (17.26 MPH)

Fuel Capacity:

27999.86 Gallons

Gross Tonnage:

769 Pounds

Accommodations

Sleeps:

12

Crew Cabin:

5

Total Heads:

7

Crew Berths:

12

Hull and Deck Information

Hull Material:

Steel Yachts

Hull Designer:

Pendennis

Deck Material:

Steel

Interior Designer:

Liebowitz & Pritchard and Pedri

Hull Configuration:

Displacement Ice Breaker Hull

Engine Information

Engines:

2

Engine Type:

Inboard

Manufacturer:

Caterpillar

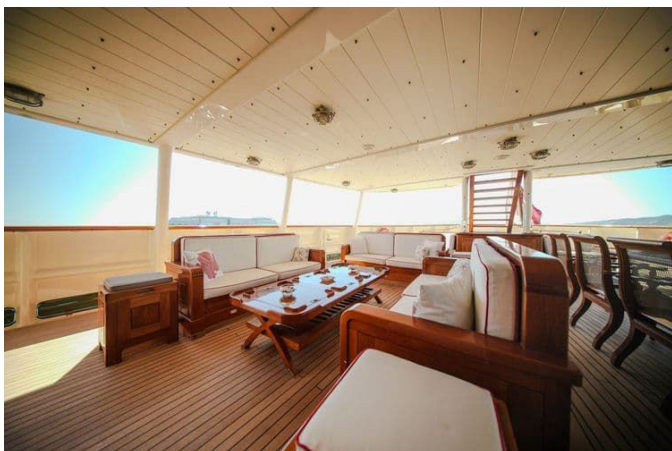
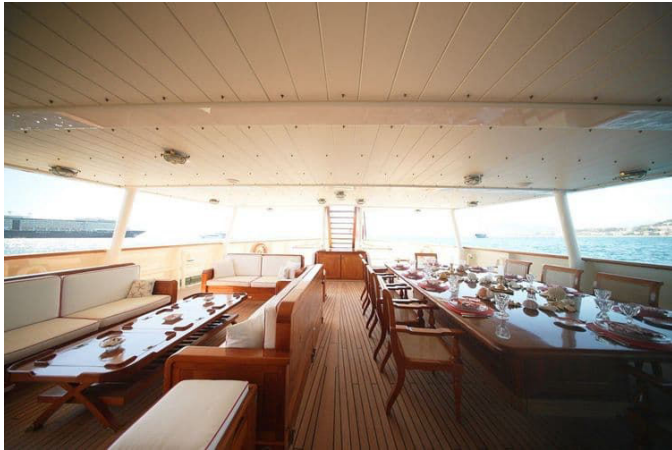
Fuel Type:

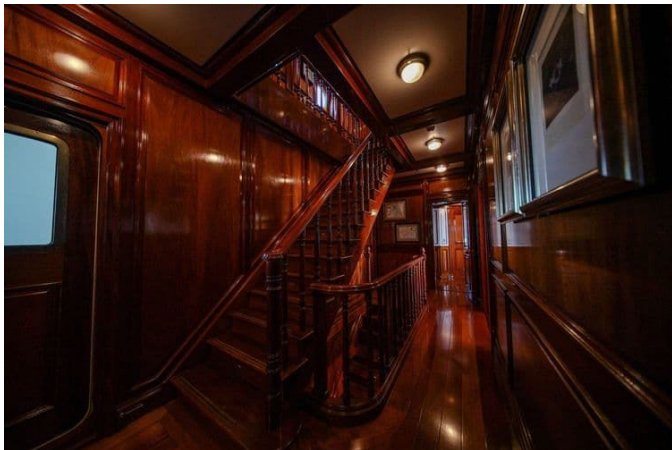
Diesel

GALLERY















DETAILED DESCRIPTION

M/y steel

Built for those who seek more than conventional cruising, M/Y STEEL is a 55-metre explorer yacht conceived for true global navigation. Delivered in 2009 by Pendennis, she distinguishes herself with an ice-class steel hull measuring 3 cm in thickness, enabling safe operations in ice conditions of up to 80 cm. Freshly repainted in 2025 and meticulously maintained throughout her lifetime, STEEL unites formidable expedition capability with a refined, enduring aesthetic. Engineered to reach remote destinations without compromise, STEEL offers an approximate transoceanic range of 10,000 nautical miles at 10 knots. Her twin Caterpillar 3512B engines, two units of 1,100 HP each, deliver reliable, efficient propulsion, while Quantum Zero Speed stabilizers ensure exceptional comfort both underway and at anchor. A comprehensive technical setup, including advanced navigation and communication systems, makes her a robust and dependable platform for extended voyages across the globe. Onboard, a distinctive ambiance evokes traditional English gentlemen's clubs, with interiors by Liebowitz & Partners. Rich textures, warm tones and finely crafted details create an inviting, characterful environment. Accommodation is arranged for up to twelve guests across seven cabins, comprising a full-beam owner's suite, two VIP cabins and four twin cabins with additional berths. Up to twelve crew members are comfortably housed in six cabins, ensuring seamless operations and attentive service. Life on board blends adventure with comfort. Guests can enjoy a heated endless pool with counter-current for both exercise and relaxation, while a forward observation platform offers a privileged vantage point for spotting marine life. Discreet hidden areas throughout the yacht add a sense of discovery, and a dedicated wine cellar housing up to 600 bottles, paired with an adjoining cigar lounge, creates a refined setting for

evenings at sea. The galley, conceived to expedition standards and equipped with a walk-in refrigerator, supports high-level culinary operations far from shore. In 2025, a focused programme of enhancements brought a full repaint, the installation of a new 5G antenna and the renewal of exterior upholstery, underscoring STEEL's commitment to enduring quality and readiness for the next horizon.

CONTACTS

Shestakov Yacht Sales is a brokerage company specializing in the sale and service of yachts worldwide. The company offers services for buying and selling both new and used motor yachts, sailing vessels, and luxury superyachts. They also provide yacht registration, insurance, technical maintenance, crew selection, and charter organization services across the U.S., Canada, Latin America, the Caribbean, and the Bahamas.

The founder and lead broker of the company is Andrey Shestakov, a licensed and certified expert with extensive experience in marine engineering and shipbuilding.

The company has an extensive network of partnerships with major yacht manufacturers worldwide and provides services in multiple languages, including Russian, Ukrainian, Spanish, and English. The office is in Dania Beach, Florida, USA.

For more information and to view available yachts, you can visit the company's official website: <https://shestakovyachtsales.com>

Contact details

Phone: +1(954)274-4435

Email: andrey@shestakovyachtsales.com

Address



1380 Weeping Willow Way, Hollywood,
Florida 33019