

JASMINE -



Year Built: 2024

Min Draft: 16' 5" (5 m)

Model: N/A

Max Draft: 16' 5" (5 m)

Price: \$10,219,543.99 USD Subject to change.

[See full listing on our website](#)

Location: Piraeus, Greece

LOA: 183' 0" (56 m)

Beam: 30' 0" (9.26 m)

TABLE OF CONTENTS

| | |
|-----------------------------------|-----------|
| OVERVIEW | 3 |
| SPECIFICATIONS | 4 |
| Basic Information | 4 |
| Dimensions | 4 |
| Accommodations | 4 |
| Hull and Deck Information | 5 |
| Engine Information | 5 |
| GALLERY | 6 |
| DETAILED DESCRIPTION | 14 |
| CONTACTS | 16 |

OVERVIEW

Embark on an unforgettable adventure with Captain Sparrow, a charming and hospitable liveaboard offering stunning sea views, gourmet dining experiences, and a friendly, attentive crew. This yacht, available for purchase, is ideal for those seeking a blend of luxury and comfort. Situated in a prime location for yacht transactions, this vessel represents a unique opportunity for prospective buyers interested in the current market. Seize the chance to own this extraordinary yacht and craft lasting memories on the open water.

SPECIFICATIONS

Basic Information

Category:
Motor yachts

Year Built:
2024

Sub category:
Mega Yachts

Country:
Greece

Model Year:
2024

Dimensions

LOA:
183' 0" (56 m)

Beam:
30' 0" (9.26 m)

Min Draft:
16' 5" (5 m)

Max Draft:
16' 5" (5 m)

Accommodations

Sleeps:
8

Crew Cabin:
16

Total Heads:
8

Crew Berths:
16

Hull and Deck Information

Hull Material:

Steel Yachts

Hull Designer:

N/A

Deck Material:

Steel

Interior Designer:

N/A

Hull Configuration:

N/A

Engine Information

Engines:

3

Engine Type:

Inboard

Manufacturer:

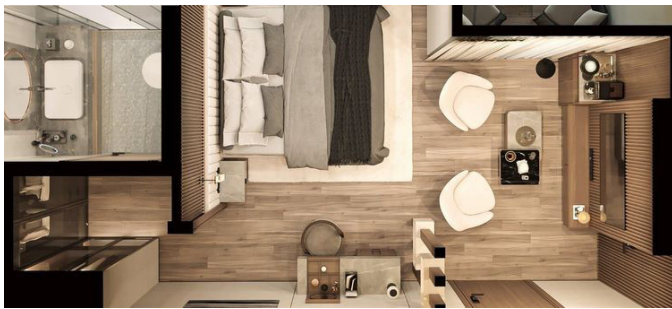
MAN

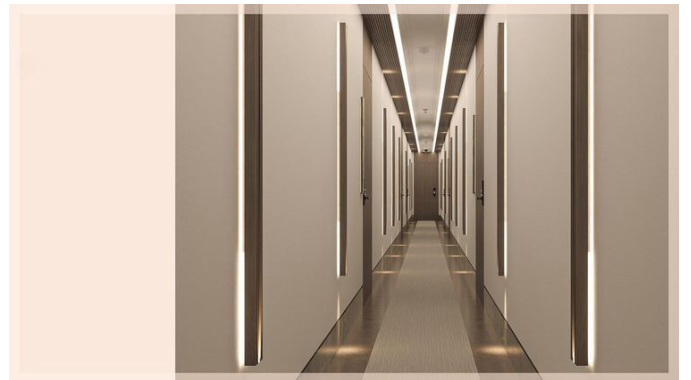
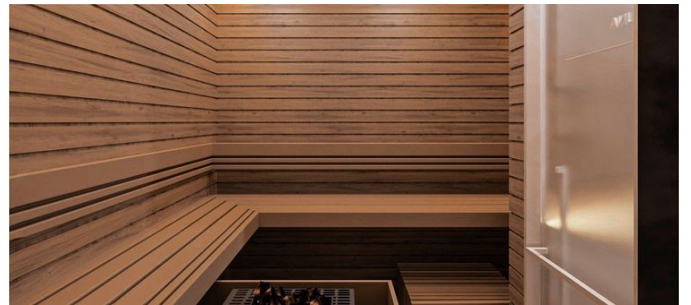
Fuel Type:

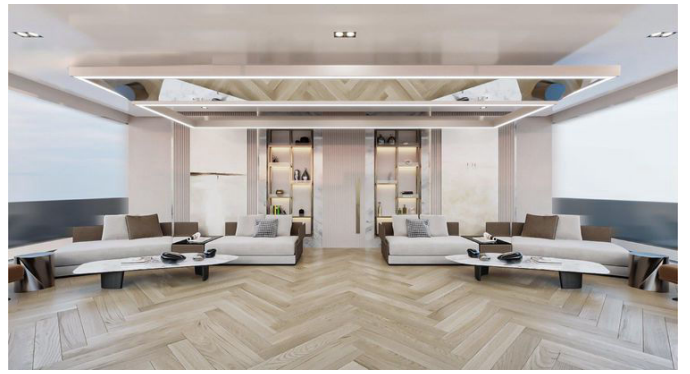
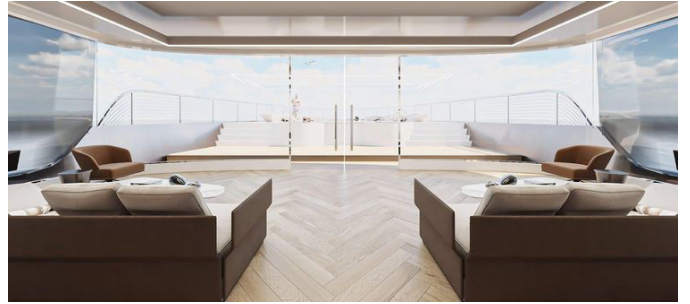
Diesel

GALLERY

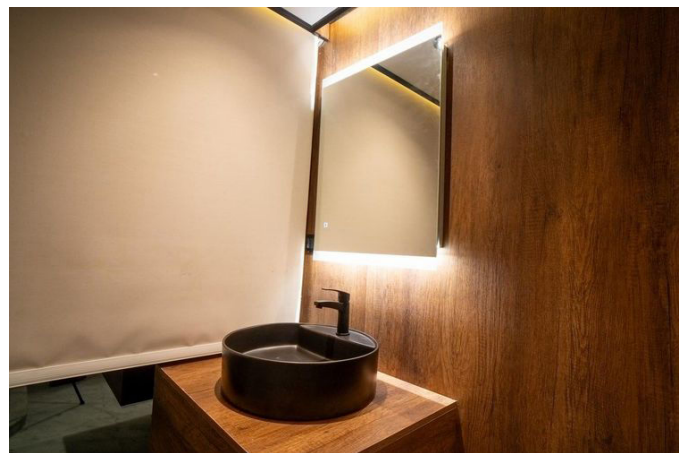
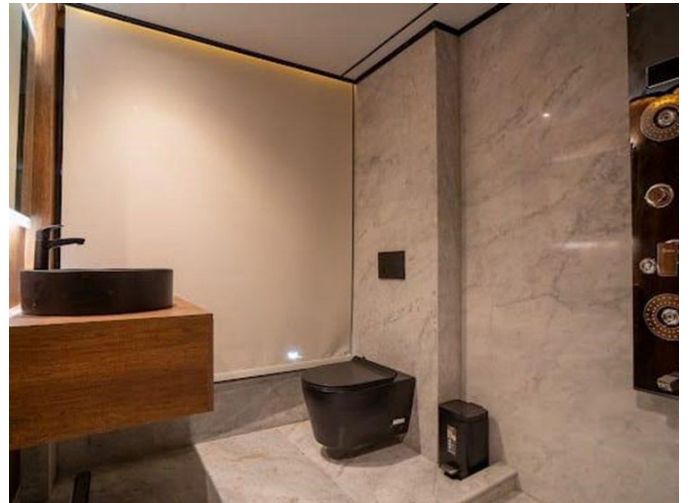


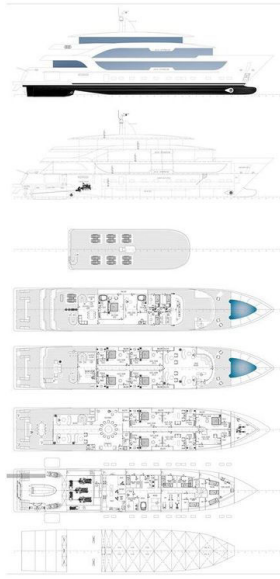














DETAILED DESCRIPTION

Section name

The M/Y Jasmine is an exquisite yacht completed in 2025, with its keel laid the previous year. This splendid vessel stretches 56 meters in length, with a beam of 9.3 meters and a draft of 2.35 meters, offering a stable and expansive platform for its guests. With a depth of 5 meters and an air draft of 13.3 meters, it is well-suited for navigating diverse waters effortlessly. Outfitted with cutting-edge navigation technology, the M/Y Jasmine is equipped with A1/A2 systems, ensuring secure and smooth journeys. It is driven by three powerful 1550 hp MAN engines, supported by auxiliary power from two 220 kVA MAN generators and one 160 kVA MAN generator. Its maneuverability is further enhanced by a 120 hp forward thruster and a 150 hp aft thruster, allowing for precise control in various conditions.

The accommodations aboard the M/Y Jasmine are truly lavish, with room for 12 guests across 8 rooms. The yacht includes three luxurious suites, each spanning 56 square meters and featuring two bathrooms, a bedroom, a living room, a balcony, two mini bars, and two TVs. Additionally, there are four standard rooms, each 28 square meters, complete with a bathroom, bedroom, balcony, mini bar, and TV. The master suite is the epitome of luxury, covering 77 square meters and offering a jacuzzi, balcony, massage chair, TV, mini bar, and a private meeting lounge.

The onboard amenities are crafted to deliver the ultimate in relaxation and entertainment. Guests can indulge in a comprehensive spa, featuring a sauna, steam room, Turkish hammam, jacuzzi, massage room, and changing room. A fully equipped gym caters to fitness enthusiasts, while a heart-shaped swimming pool with an expansive sun area provides an ideal spot for leisure. Each deck of the yacht includes outdoor seating areas and a sun deck, offering

ample space for guests to savor the sea breeze.

The M/Y Jasmine also boasts a main salon and dining area covering 120 square meters, two intimate lounges of 30 square meters each, and a forward salon with views of the sea and pool, measuring 90 square meters. The beach club, with an aft door and two side ramps, provides easy access to the water for a range of activities. Combining technical prowess with opulent accommodations, the M/Y Jasmine offers an unmatched yachting experience.

CONTACTS

Shestakov Yacht Sales is a brokerage company specializing in the sale and service of yachts worldwide. The company offers services for buying and selling both new and used motor yachts, sailing vessels, and luxury superyachts. They also provide yacht registration, insurance, technical maintenance, crew selection, and charter organization services across the U.S., Canada, Latin America, the Caribbean, and the Bahamas.

The founder and lead broker of the company is Andrey Shestakov, a licensed and certified expert with extensive experience in marine engineering and shipbuilding.

The company has an extensive network of partnerships with major yacht manufacturers worldwide and provides services in multiple languages, including Russian, Ukrainian, Spanish, and English. The office is in Dania Beach, Florida, USA.

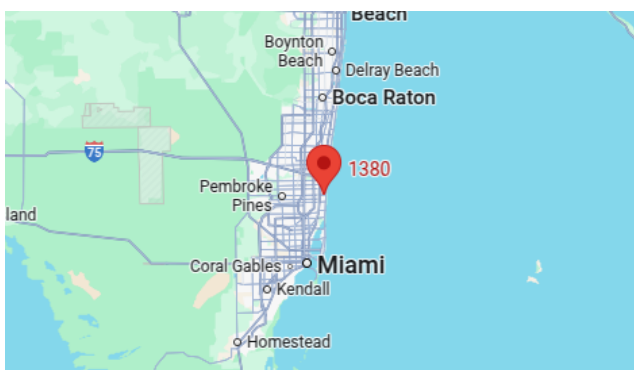
For more information and to view available yachts, you can visit the company's official website: <https://shestakovyachtsales.com>

Contact details

Phone: +1(954)274-4435

Email: andrey@shestakovyachtsales.com

Address



1380 Weeping Willow Way, Hollywood,
Florida 33019