



SHESTAKOV

Yacht Sales

19' CAPE CODDER 1987 - CAPE COD MARINE



Builder: [CAPE COD MARINE](#)

Year Built: 1987

Model: N/A

Price: \$12,000 USD Subject to change.

[See full listing on our website](#)

Location: Mendon, United States

LOA: 19' 0" (5.82 m)

If you would like to buy a yacht **19' CAPE CODDER 1987 - CAPE COD MARINE** or would like help answering any questions concerning purchasing, selling, or chartering a yacht, please call **+1(954)274-4435** or click here on <https://shestakovyachtsales.com>

TABLE OF CONTENTS

OVERVIEW 3

SPECIFICATIONS 5

 Basic Information 5

 Dimensions 5

 Hull and Deck Information 5

 Engine Information 5

GALLERY 6

CONTACTS 12

OVERVIEW

The asking figure is provided as an indication only, and all serious proposals will be received and given respectful consideration. This 1987 Cape Codder-style fishing boat exemplifies time honored New England boatbuilding, marrying honest, rugged simplicity with the seaworthy poise associated with Downeast coastal cruisers. Designed for bays, harbors and nearshore passages, it serves as a practical, trailerable sportfisher that is equally suited to a dawn fishing run or a relaxed afternoon with family, offering uncomplicated pleasure and enduring character.

Offered as a complete, turn key package, the vessel is equipped with a low hour Evinrude E TEC 115 HP outboard (fewer than 100 hours) and a 2005 Load Rite galvanized single axle roller trailer, delivering authentic coastal New England appeal with efficient outboard propulsion and easy trailering. The hull shows the tasteful patina one would expect from a 1987 build, yet remains solid underfoot and prepared for service. The Evinrude E TEC 115 has been praised by the previous owner for its strong midrange punch, economical fuel consumption and modest routine maintenance requirements—attributes that make it an ideal powerplant for an inshore or bay fishing platform. The included Load Rite trailer simplifies storage, transport and launching, rounding out a practical, well appointed setup ready for a new owner to enjoy; prospective buyers are encouraged to present offers confidently.

Onboard equipment enhances the package for coastal use, including a Garmin GPS (approximate value \$1,000) to aid navigation and a Scotty downrigger complete with Scotty pot puller (approximate value \$500) to expand fishing capability, making this compact sportfishing craft an appealing, ready to use coastal offering. The galvanized Load Rite single axle roller trailer is sold with the vessel, facilitating straightforward ramp work and highway mobility for this trailerable center console style boat. Nationwide transport may be arranged

through a certified marine logistics partner, with options for custom cradles and coordination to ports for overseas shipment; additional trailer solutions or upgrades can be facilitated through our Mendon, MA office upon request.

Engine(s) condition should be independently evaluated by any buyer; please refer to the Motors and Machinery Disclaimer that follows. Motors and Machinery Disclaimer: No representation is made regarding the condition of engines, mechanical systems or onboard machinery. Images may include the propulsion system or related components, but it is solely the buyer's responsibility to inspect, survey and verify actual operating condition and suitability for their intended use.

Transportation support can be coordinated nationwide via trusted marine carriers, including export preparation and delivery to appropriate ports when required; our Mendon, MA location can assist with logistics, scheduling and quotes to streamline the journey from dock to destination. Please do not assume that accessories or equipment not visible at the time of viewing are included; this vessel is offered exactly as shown and where she lies, and bids or offers should be based on the inventory present during inspection.

The particulars herein are presented in good faith but without guarantee; buyers are urged to confirm all details independently. This offering is subject to prior sale, price change or withdrawal without notice. All marine assets, whether owned or marketed by the company or its affiliates, are sold AS IS, WHERE IS, with NO WARRANTY OR GUARANTEE EXPRESSED OR IMPLIED, including NO WARRANTIES OF MERCHANTABILITY OR FITNESS FOR A PARTICULAR PURPOSE. No verbal agreements shall modify the terms of sale.

SPECIFICATIONS

Basic Information

Model Year:
1987

Country:
United States

Year Built:
1987

Dimensions

LOA:
19' 0" (5.82 m)

Hull and Deck Information

Hull Material:
Fiberglass and Plastic Yachts

Hull Designer:
N/A

Deck Material:
Fiberglass

Interior Designer:
N/A

Hull Configuration:
N/A

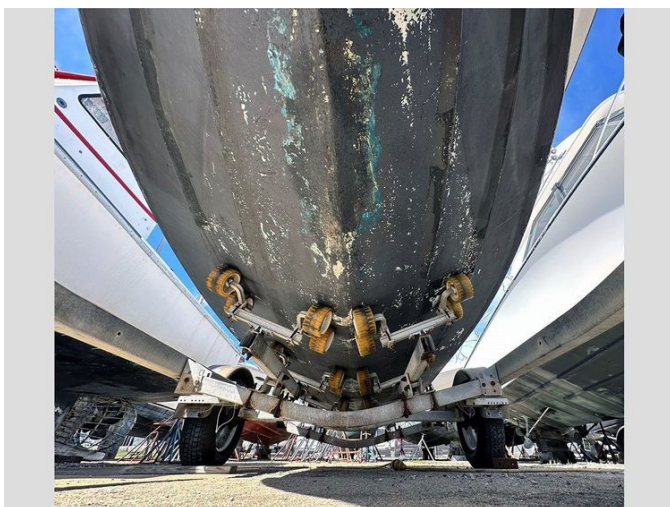
Engine Information

Engines:
1

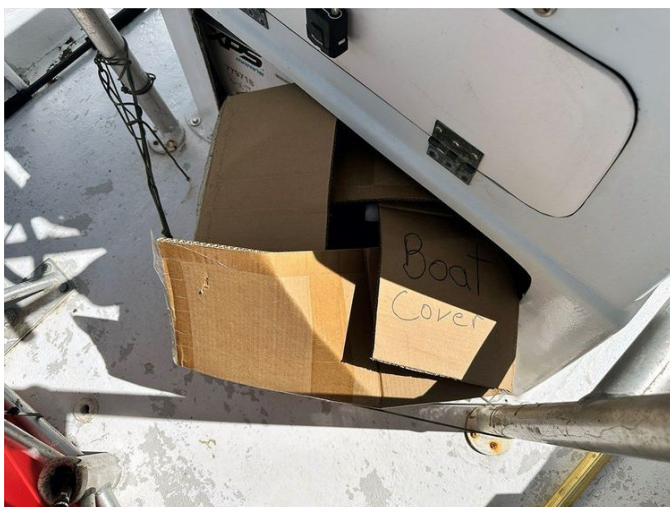
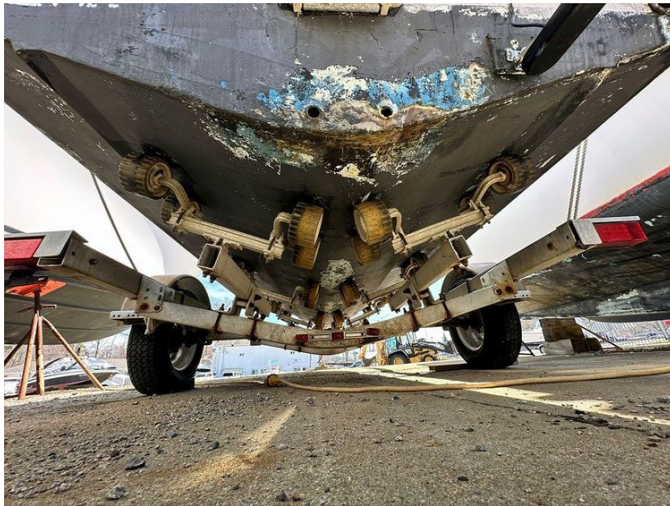
Manufacturer:
Evenrude

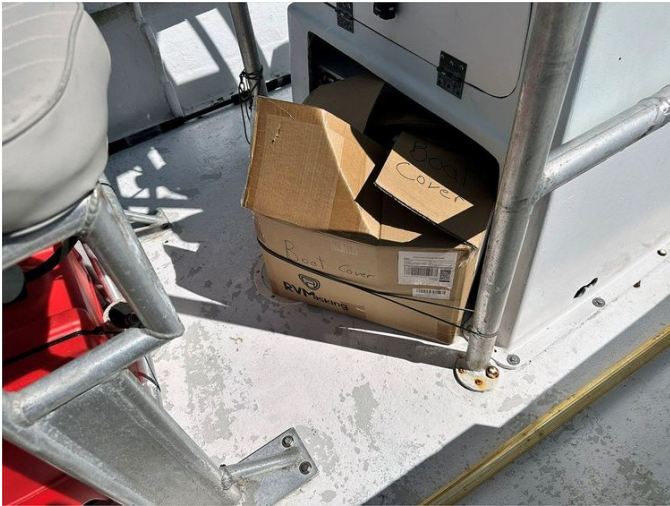
GALLERY













CONTACTS

Shestakov Yacht Sales is a brokerage company specializing in the sale and service of yachts worldwide. The company offers services for buying and selling both new and used motor yachts, sailing vessels, and luxury superyachts. They also provide yacht registration, insurance, technical maintenance, crew selection, and charter organization services across the U.S., Canada, Latin America, the Caribbean, and the Bahamas.

The founder and lead broker of the company is Andrey Shestakov, a licensed and certified expert with extensive experience in marine engineering and shipbuilding.

The company has an extensive network of partnerships with major yacht manufacturers worldwide and provides services in multiple languages, including Russian, Ukrainian, Spanish, and English. The office is in Dania Beach, Florida, USA.

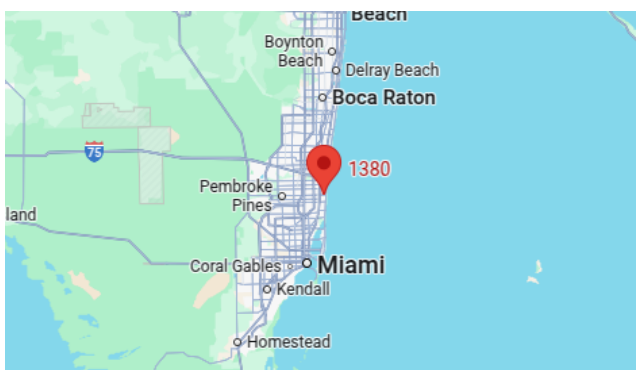
For more information and to view available yachts, you can visit the company's official website: <https://shestakovyachtsales.com>

Contact details

Phone: +1(954)274-4435

Email: andrey@shestakovyachtsales.com

Address



1380 Weeping Willow Way, Hollywood,
Florida 33019