



LOON - ICON YACHTS

Builder: [ICON YACHTS](#)

LOA: 221' 0" (67.36 m)

Year Built: 2010

Beam: 37' 0" (11.56 m)

Model: N/A

Max Draft: 42' 5" (12.92 m)

Price: \$42,950,000 USD Subject to change.

Cruising Speed: 12.50 Knots (14.38 MPH)

[See full listing on our website](#)

Location: East End, US Virgin Islands

Max Speed: 16 Knots (18.41 MPH)

If you would like to buy a yacht **LOON - ICON YACHTS** or would like help answering any questions concerning purchasing, selling, or chartering a yacht, please call **+1(954)274-4435** or click here on <https://shestakovyachtsales.com>

TABLE OF CONTENTS

OVERVIEW 3

SPECIFICATIONS 4

 Basic Information 4

 Dimensions 4

 Speed, Capacities and Weight 4

 Accommodations 5

 Hull and Deck Information 5

 Engine Information 5

GALLERY 6

DETAILED DESCRIPTION 20

CONTACTS 33

OVERVIEW

LOON is an arresting 221-foot Icon motoryacht, composed across six expansive decks and appointed with seven sumptuous staterooms, celebrated as one of the world's most desirable charter yachts. The vessel marries relaxation and grandeur without effort, guided by Studio Linse's inspired interior vision that shapes an atmosphere of refined minimalism. A muted color scheme and elegantly chosen furnishings create a serene sanctuary perfect for languid days at sea. Outside, the profile conceived by Redman Whiteley Dixon reads as a masterful work of naval artistry, delivering unmatched comfort and sartorial grace. Available for sale in its current boat location, this yacht for sale stands as a rare chance to acquire a yacht that truly embodies timeless elegance and luxury.

SPECIFICATIONS

Basic Information

Category:
Motor yachts

Year Built:
2010

Model Year:
2010

Country:
US Virgin Islands

Dimensions

LOA:
221' 0" (67.36 m)

Max Draft:
42' 5" (12.92 m)

Beam:
37' 0" (11.56 m)

Speed, Capacities and Weight

Cruise Speed:
12.50 Knots (14.38 MPH)

Water Capacity:
7661 Gallons

Max Speed:
16 Knots (18.41 MPH)

Fuel Capacity:
52185 Gallons

Gross Tonnage:
1295 Pounds

Accommodations

Crew Cabin:

9

Hull and Deck Information

Hull Material:

Steel Yachts

Hull Designer:

N/A

Deck Material:

Steel

Interior Designer:

Studio Linse (Holland)

Hull Configuration:

Full Displacement

Engine Information

Engines:

2

Engine Type:

Inboard

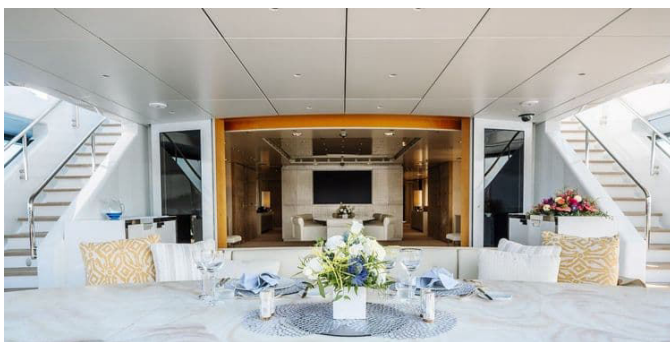
Manufacturer:

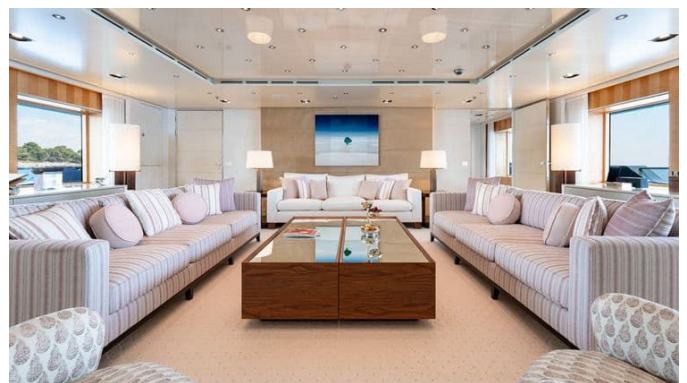
MTU

Fuel Type:

Diesel

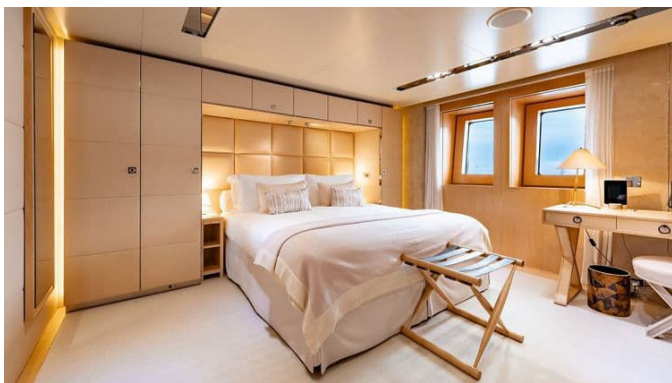
GALLERY

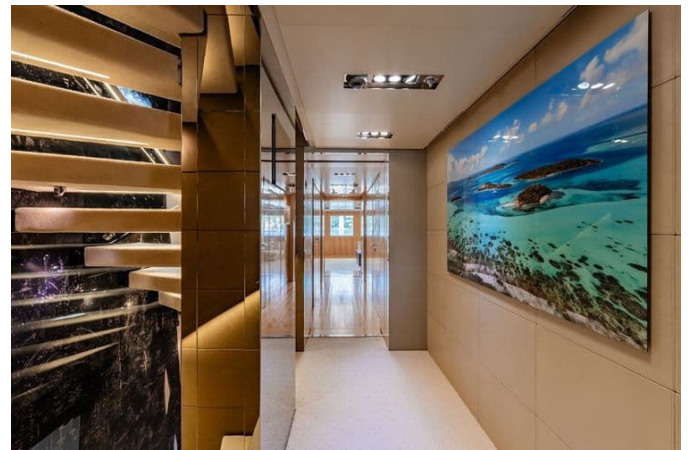




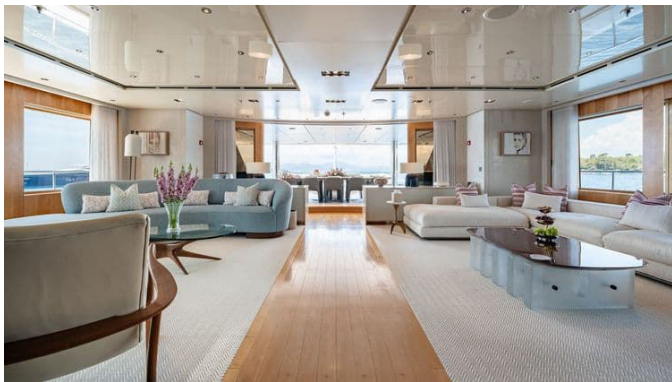




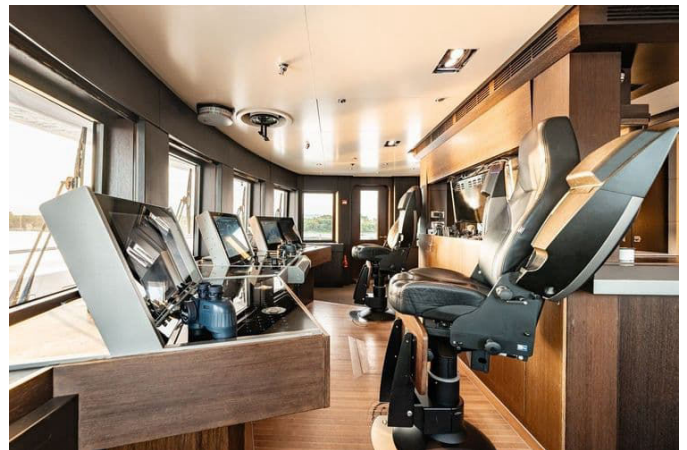


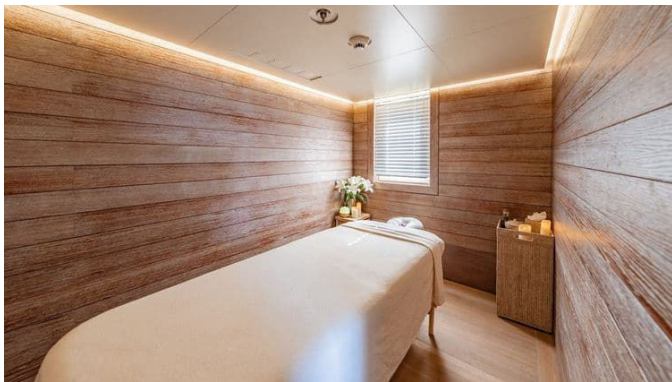


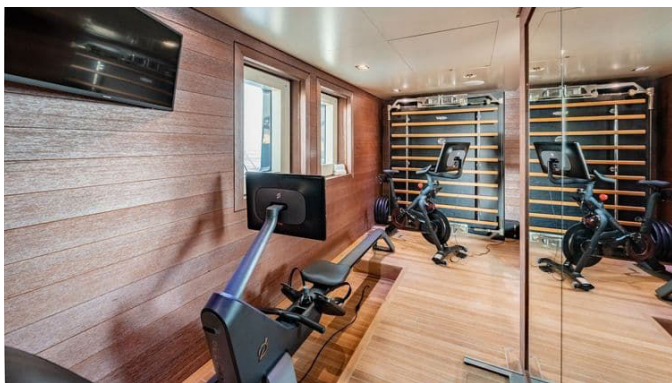
















DETAILED DESCRIPTION

Section name

Loon is a 221-foot Icon motoryacht that stands as a paragon of luxury and sophistication, boasting six decks and seven staterooms. Renowned as the most famous and marketed charter yacht globally, Loon combines comfort and opulence in a seamless blend. The interior, crafted by Studio Linse, exudes minimalistic and refined elegance, with subtle colors and elegant furnishings that create a serene atmosphere for relaxed ocean living. The exterior, a masterpiece by Redman Whiteley Dixon Design, offers incredible comfort and style. One of Loon's standout features is the main deck master suite, which includes a private staircase leading to a 180-degree view private lounge and office. This space also features a private exterior sunning area and can be transformed into a separate VIP stateroom, allowing for an eight-stateroom configuration similar to her sistership. In 2014, the Icon factory extended Loon's hull by 16.40 feet, creating the largest beach club ever seen on a vessel of this size. This extension also includes a private hallway connecting the beach club to the lower guest accommodations, a unique feature found only on Icons. The aft deck playground features a 24.60 by 11.48-foot saltwater or freshwater pool surrounded by sunbeds, with an additional exterior sofa and dining area forward of the pool. Forward of the owner's lounge and office is a large tender garage, one of the largest on vessels of similar size. This garage accommodates three tenders, three jet skis, and several toys, all kept off the decks and weather-protected. The garage's thoughtful location allows for the massive beach club and facilitates easier toy removal while stern in, providing guests with immediate access to the water. Loon's spacious interior can accommodate up to 13 guests in seven staterooms. The owner's master stateroom spans two decks, while the skylounge deck features two additional

guest staterooms. On the starboard side, a spacious VIP guest stateroom with a queen-size bed is complemented by a smaller stateroom with a single berth, perfect for a child or nanny. The lower deck houses four comparably sized staterooms, all with queen berths, two of which can easily convert to singles. Built for long-range cruising, Loon boasts a range of 6,000 nautical miles at 12.5 knots. She is equipped with zero-speed stabilization both at anchor and underway, ensuring a comfortable voyage in all weather conditions. The yacht's hull is constructed from steel, with a steel bulb and an aluminum superstructure. The deck is made of teak with grey caulking, and the yacht is finished with Awlcraft paint. Loon's full displacement oceangoing motoryacht configuration and six decks make her a true marvel of maritime engineering.

Dimensions

The yacht Loon is a marvel of engineering and design, boasting impressive dimensions and capacities that make it a standout in its class. With an overall length of 221.46 feet (67.50 meters) and a length at the waterline of 168.64 feet (51.40 meters), Loon offers ample space for luxurious living and entertaining. The beam measures 37.40 feet (11.40 meters), providing a broad and stable platform, while the draft, when loaded, is 12.47 feet (3.80 meters). The yacht's gross tonnage is 1,295, reflecting its substantial size and capacity. Loon's fuel capacity is a remarkable 42,267 US gallons (160,000 liters), ensuring long voyages without the need for frequent refueling. The water capacity is 7,661 US gallons (29,000 liters), complemented by watermakers capable of producing 4,226 US gallons (16,000 liters), ensuring a steady supply of fresh water. The yacht also features a lube oil capacity of 818 US gallons (3,100 liters) and a waste oil capacity of 1,347 US gallons (5,100 liters), highlighting its self-sufficiency and environmental considerations. Noise levels on board are meticulously managed, with decibel readings taken in various areas. The skylounge deck aft lounge and forward areas register at 42 dB(a) at cruise

speed and 40 dB(a) at anchor, ensuring a tranquil environment. The master cabin maintains a consistent 41 dB(a) at both cruise speed and anchor, while the master bath is slightly higher at 42 dB(a). The main saloon forward records 47 dB(a) at cruise speed and 43 dB(a) at anchor, while the main saloon aft is at 53 dB(a) and 46 dB(a) respectively, reflecting the yacht's commitment to comfort and quietude. During sea trials, Loon's fuel efficiency is demonstrated across various engine RPMs. At 1,250 RPM, the yacht achieves a speed over ground (SOG) of 12 knots with a fuel consumption of 98 liters per hour (26 gallons per hour). Increasing to 1,450 RPM, the SOG rises to 13 knots, consuming 140 liters per hour (37 gallons per hour). At 1,650 RPM, the yacht reaches 14.3 knots, with fuel consumption at 247 liters per hour (65 gallons per hour). At 1,850 RPM, Loon achieves 15.9 knots, consuming 390 liters per hour (103 gallons per hour). Finally, at the maximum 2,000 RPM, the yacht reaches a speed of 16.9 knots, with a fuel consumption of 465 liters per hour (123 gallons per hour), showcasing its powerful performance capabilities.

Machinery

The yacht Loon is powered by a robust machinery setup that ensures both performance and reliability. At the heart of its propulsion system are two MTU 12V-4000-M71 engines, each delivering an impressive 2,480 horsepower. As of June 24, 2025, the starboard engine has logged 19,624 hours, while the port engine has recorded 19,256 hours. These engines are paired with ZF model 7561 gearboxes, featuring a reduction ratio of 4.9:1, and drive two Wartsilan five-blade propellers. The yacht runs on diesel fuel and is equipped with two 24V main engine start batteries. The yacht's power generation is supported by two 269 kW Scania generators, installed new in 2014. The starboard generator was rebuilt in July 2024 and has accumulated 4,025 hours since its major overhaul, with a total of 30,783 hours as of June 24, 2025. The port generator, rebuilt on June 25, 2025, has 216 hours since its overhaul, totaling 30,326

hours. Additionally, a middle generator, a 217 kW Scania unit also new in 2014, was rebuilt in July 2024 and has 1,392 hours since its overhaul, with a total of 25,060 hours. An emergency generator, the Sisu Diesel model 49.492.CTAG-4V, is located on the flybridge's port side. All three main generators are equipped with HUG catalytic soot filters, ensuring low to zero emissions for clean exhaust above the waterline. The generators are started by three 24V 200AH batteries. The yacht's electrical system features a main power supply of 230/400 volts at 50Hz, with a three-phase wire system and grounded neutral. Shore power is managed by two 150Kva Zeus shore power converters, capable of processing inputs from 330-520 VAC and 40-70Hz, outputting 50Hz, 400V, and 220 AMPs. The yacht also includes 24-volt emergency batteries, Mastervolt Mass 24/50 battery chargers, and a Mastervolt Mass 24/2500 inverter. For climate control, Loon is equipped with a Heinen & Hopman air conditioning system, supported by two Kaeser Airtower 6 air compressors. The yacht's other machinery includes two Hydro Electrique Marine Duplex H40/4200 watermakers, capable of producing 750 liters (198 US gallons) per hour, and a total of 18,000 liters (4,755 US gallons) per hour. Stability is maintained by two Quantum zero speed stabilizers, model QC 1800, which are gyro-controlled and non-retractable, designed for peak performance at 15 knots and optimal roll damping at anchor. The bow thruster is a Veth tunnel thruster VT-240, and the steering system is provided by Van Der Velden Marine Systems, featuring hydraulic steering gear with rubber design oil bath shafts and Wartsila/Lips five-blade fixed pitch nibral bronze propellers. Emergency steering is also managed by Van Der Velden Marine Systems. Fuel management is handled by an Alfa Laval PU 150 fuel separator and filtration system, with an Alfa Laval ACP 32 fuel transfer pump and an Azcue CA50/2A fuel filling pump. The yacht's sewage system is a biological treatment unit, the HMSA MS-II, and the fresh water system includes two HEM Hydro Electric Marine H40 series reverse osmosis watermakers, each capable of producing 20,000 liters per day. Fresh water treatment is further enhanced by two HEM reverse osmosis freshwater

systems, each with a water softener, and two HEM UV water sterilization systems with charcoal filtration. Bilge water filtration is managed by a Facet system with silver ION technology. Additionally, the yacht is equipped with a Mariner 200 EPR diving/firefighting air compressor, rated at 330 bar for diving and 300 bar for firefighting.

Communication systems

The yacht Loon is equipped with an advanced array of communication systems, ensuring seamless connectivity and safety for all on board. At the forefront of its communication capabilities is the STARLink Wi-Fi, providing reliable internet access throughout the vessel. For satellite communication, the yacht features a Furuno Inmarsat CTT 3606E GMDSS system and an Inmarsat Fleet 500, which offers both internet and emergency worldwide communication capabilities. Safety and security are further enhanced by the TT-3000E Ship Security Alert System (SSAS) and a Sailor 6222 VHF/DSC radio, complemented by three Jotron handheld VHF radios for portable use. The yacht is also equipped with an Iridium satellite phone, ensuring global reach even in the most remote locations. Internal communication is facilitated by a Phontech CIS intercom system and a Cisco CME telephone system, with Cisco IP phones installed in every room for convenience. The yacht's radar capabilities are supported by two Jotron Tron SART20 radar transponders, while long-range communication is handled by two Sailor SSB radio TT3042C units. Navigation is made efficient with a full ECDIS Transas 4000 paperless bridge system. For onboard communication, there are 20 Icom IC-F2000S UHF radios, and a Sailor 6110 GMDSS system provides portable VHF capabilities. The GMDSS battery plant is powered by two 12V PowerSafe monoblocs, ensuring reliable operation. Guest communication is prioritized with 15 Cisco IP Phone 7945 units, and internal ship communications are supported by the Cisco CME system and the Icom UHF radios. Each cabin is equipped with both

wired and wireless LAN connections, ensuring guests can stay connected at all times. Additionally, the yacht features a wireless Cisco portable phone and four cellular GSM/data phones for versatile communication options.

Navigation systems

The yacht Loon is equipped with state-of-the-art navigation systems, ensuring precision and safety on every voyage. At the core of its navigation capabilities is the full ECDIS Transas 4000 paperless bridge, which provides advanced electronic chart display and information. This sophisticated system is complemented by five new Hatteland monitors installed in 2023, offering clear and reliable visual data. For radar capabilities, Loon features a Furuno X-band radar FAR-2117BB and an S-band radar FAR-21375BB, providing comprehensive coverage and detection. The multifunctional workstation by Radio Zeeland enhances operational efficiency, while the Transas Laser Plotter and MaxSea Unit offer precise plotting and navigation support. Power stability is ensured by an APC Smart 3,000 UPS, safeguarding the navigation systems against power fluctuations. The yacht is equipped with a Cassens & Plath 33001 magnetic compass and a Raytheon standard gyrocompass STD22, located in the ETO office, for accurate heading information. The Raytheon 102-886 autopilot system provides automated steering, while the Furuno Wind/Speed Log DS80 and Furuno Depth Sounder Fe700, with a backup unit, offer precise speed and depth readings. Loon's GPS capabilities are robust, featuring a Furuno GPS GP-170 and a dual Furuno GPS GP-150 system, ensuring accurate positioning. The Furuno AIS FA 150 and NX 700 Navtex systems provide essential information on vessel traffic and navigational warnings. Weather conditions are monitored by the Vaisala Weather Transmitter WXT520, and the yacht is equipped with five-tone air horns with manual and automatic functions for signaling. For enhanced visibility, the yacht is fitted with Sanshin PP208 searchlights, and the Watchkeeper BNWAS

ensures the crew's alertness and safety. These advanced navigation systems make Loon a leader in maritime technology, providing a safe and efficient journey for all on board.

Entertainment systems

The yacht Loon offers an exceptional entertainment experience, equipped with state-of-the-art systems to ensure guests enjoy every moment on board. In all guest areas, Apple TV provides a seamless viewing experience. The main salon features a Bang & Olufsen BeoVision Avant, with an impressive 85" 4K Ultra HD LED TV and surround sound, creating a cinematic atmosphere. On the skylounge deck, guests can enjoy an 80" Samsung 8K QLED TV with surround sound, newly installed in 2023, offering stunning visuals and audio. In the master stateroom, a 49" Samsung LCD TV with surround sound is complemented by an iPod docking station for personal music enjoyment. Guest staterooms on the lower deck are equipped with four 48" LED Samsung Frame TVs, while the skylounge deck features two 43" LED Samsung TVs. Each guestroom also includes an iPod docking station for personal use. The beach club boasts a 43" Samsung LCD TV on a TV lift, and the gym is equipped with a 32" Samsung LCD TV. The crew mess is fitted with two 43" Samsung LCD TVs linked to satellite and entertainment systems, complete with surround sound. Additional entertainment options include PS4 and PS5 gaming consoles, providing a variety of gaming experiences. Guest staterooms and saloons are equipped with automatic lights, curtains with 100% light shut, and air conditioning controls for personalized comfort. Wi-Fi coverage is available throughout the vessel, ensuring guests stay connected. For audio enjoyment, the yacht features Sonos stereo systems throughout, allowing guests to stream or airplay music directly from their phones, ensuring a personalized and immersive audio experience.

Galley & laundry equipment

The yacht Loon is equipped with top-of-the-line galley and laundry equipment, ensuring both culinary excellence and impeccable service. The main galley features professional MKN cooking equipment, seamlessly integrated into a stainless steel work surface for a sleek and efficient cooking environment. Refrigeration is ample, with a 6m² walk-in fridge and two 6m² walk-in freezers, which can be adjusted to fridge temperature as needed. A Hobart industrial dishwasher ensures quick and thorough cleaning, while two dumbwaiters by Holland Marine serve all decks, featuring an innovative lift cage with compartments for trays and trolleys. In the crew galley and mess, the cooking equipment includes two ovens, a microwave, and a hot oven, complemented by a Frigoboat refrigeration system and a Hobart industrial dishwasher. A Panasonic professional combi microwave adds versatility to meal preparation. Additional galley equipment includes a Weber BBQ and buffet cabinets equipped with a refrigerator, ice maker, and plate warmer. A 60L Frigonautica fridge provides extra refrigeration, while a dedicated fridge for wine storage and a storage room offer ample space for provisions. The yacht's pantries are well-appointed, with the skylounge deck featuring a Nespresso coffee machine, Quooker instant boiling water tap, mixer tap, Inskinkerator, and stainless steel sink. The beach club is equipped with a 60L drinks fridge, Foster ice maker, bar, and marble sink. On the bridge deck, similar amenities are available, along with a 60L drink fridge. The main deck pantry includes a Foster icemaker, Santos citrus juicer, Panasonic professional combi microwave, 4-zone hob, griddle, pasta cooker, deep fryer, static oven, combination steam oven, and salamander grill. A walk-in garbage fridge and a custom stainless steel exhaust hood with variable frequency intakes and an extraction fan ensure a clean and odor-free environment. For laundry needs, the yacht is equipped with Miele Professional appliances, including four PW6065 washing machines, four PT7136 dryers, one PW6133 washing machine, one PT7331 dryer, and an HM

16-80D rotary ironer, ensuring that all laundry requirements are met with efficiency and precision.

Tenders & toys

The yacht Loon is equipped with an impressive array of tenders and toys, ensuring endless fun and adventure on the water. Among the tenders, you'll find a 23.62-foot (7.20-meter) 2022 Super Air Nautique ski boat, perfect for water sports enthusiasts. Additionally, there is a 24.61-foot (7.50-meter) 2022 X-Craft Beachlander, offering versatility and comfort for beach landings. For safety and peace of mind, the yacht includes an 11.81-foot (3.60-meter) Narwhal unsinkable rescue boat, featuring a new engine and tubes in 2024. For those who love jet skiing, Loon offers two 2023 SeaDoo Sparks and a Yamaha Superjet standup jet ski, providing thrilling rides across the waves. The yacht's collection of toys is equally impressive, featuring two Seabob F5S for underwater exploration and two Lift efoils for a unique surfing experience. A new custom FunAir inflatable waterslide, measuring 13.12 feet (4 meters), and a 40-foot (12.19-meter) inflatable beach club, both added in 2024, promise hours of entertainment. Guests can also enjoy inflatable paddleboards, wakeboards, a foil board, wake surf boards, water skis, a mono ski, inflatable donuts, and sun loungers. For a perfect day at the beach, Loon provides a complete setup including a marquee, chairs, tables, and Weber BBQs. Safety and comfort are prioritized with sets of personal flotation devices (PFDs), helmets, gloves, snorkels, and fins. Additionally, the yacht is equipped with a Mariner 200 EPR diving/firefighting air compressor, rated at 330 bar, ensuring readiness for both diving adventures and safety needs.

Deck equipment

The yacht Loon is outfitted with an impressive array of deck equipment,

ensuring both functionality and luxury for its guests. The anchor windlass system features two Ten Horn Winches model EACV 28U3, providing reliable anchoring capabilities. Complementing this are three polished stainless steel Maxwell 8000 aft warping capstans, which enhance the yacht's mooring efficiency. The vessel is equipped with two POOL fully balanced high holding power anchors, each supported by 190 meters of 28mm anchor chain, ensuring secure anchorage in various conditions. For handling tenders and watercraft, Loon is equipped with two Cramm lifting cranes. One crane is rated at a 4-ton lifting capacity, specifically for the 23.62-foot (7.2-meter) Super Air Nautique, while the other crane, also rated at 4 tons, is designed to handle the 24.60-foot (7.5-meter) X-Craft Beachlander, a rescue boat, and three jet skis. The aft Cramm passerelle offers 90-degree rotation and features an up and down function, facilitating easy boarding. Additionally, the stern boarding gangway is a Cramm Hydromar hydraulic model, providing smooth access to the yacht. The swimming platform is a fold-down transom, complemented by a stainless steel swimming ladder with teak steps, offering easy access to the water. For relaxation and leisure, the yacht features a filtered saltwater and freshwater pool, a Hoesch Alabama whirlpool spa tub on the bridge aft deck, a sauna, and a dedicated massage room. Fitness enthusiasts will appreciate the gym equipment, which includes a Technogym Kinesis Personal Multi Functional Gym and a Technogym Unica Compact Multi Gym, along with Peloton equipment. To enhance the outdoor experience, the yacht is equipped with sun awnings on the upper deck aft, providing shade and comfort for guests as they enjoy the stunning views and luxurious amenities on board.

Security, fire fighting & safety equipment

The yacht Loon is equipped with comprehensive security, fire fighting, and safety systems to ensure the utmost protection for all on board. The security system is anchored by an AXIS setup, complemented by 19 CCTV cameras with

motion sensors, providing extensive surveillance coverage. Monitoring is facilitated through a combination of one Surface, two iPads, and three Hatteland monitors, ensuring that all areas of the yacht are under constant observation. In terms of fire fighting equipment, Loon is outfitted with a Hi-Fog firefighting system throughout the vessel, along with a CO2 system specifically for the galley duct. The yacht is equipped with 52 portable fire extinguishers and 22 fire hydrants/hoses, ensuring readiness for any fire-related emergencies. The Tyco Minerva T2000 fire alarms, along with 150 Tyco smoke and heat detectors, provide early warning in case of fire. Gas detection is managed by two Monicon S-500 units, and the E2S System Horns serve as alarms to alert the crew and guests. Safety equipment on board includes four 25-person life rafts and one 8-person life raft, providing ample capacity for evacuation if necessary. There are 37 lifejackets and eight life rings available for immediate use. The yacht is also equipped with two Pains Wessex 250 line throwers and a Narwhal SV420 MOB boat for man-overboard situations. Breathing apparatus includes four units and eight bottles, while 37 immersion suits are available for cold water emergencies. For location and rescue, the yacht is equipped with two Jotron 40S EPIRBs and two Jotron SART-20 units. Additionally, there are 12 parachute flares for signaling, and the medical equipment is classified as MSOS class B, ensuring comprehensive medical support in case of emergencies.

Accommodations

The yacht Loon offers luxurious accommodations for up to 13 guests, ensuring a comfortable and elegant stay on board. The highlight of the accommodations is the Owner's two-level master stateroom, which includes a master suite and office located on the main deck, complemented by a lounge area on the skylounge deck. This expansive suite provides a private and serene retreat for the owner. For guests, the lower deck features four queen staterooms, two of

which can be converted from queen beds to singles, offering flexibility to suit different needs. On the skylounge deck, there is a double VIP stateroom and an additional single berth cabin, providing a variety of options for guest accommodations. The crew is well-catered for with dedicated spaces to ensure efficient service and comfort. The bridge deck houses the captain and chief officer's cabins, while the lower deck includes a chief engineer's cabin and six shared cabins for the crew, with direct access to the guest accommodations corridor for seamless service. The tank deck features a crew mess room and relaxation area, along with two additional crew cabins, ensuring that the crew has ample space to rest and recharge.

Comments

When considering the purchase of the yacht Loon, it is important to note certain exclusions that apply. The 48-foot towable tender named "ANVERA" is not included in the sale and remains the property of the seller. Additionally, the name "LOON" is reserved for the seller, meaning the new owner will need to select a different name for the yacht. Furthermore, all items on board that are monogrammed with "LOON" are also excluded from the sale, ensuring that these personalized items remain with the seller. These exclusions are essential to consider when finalizing the purchase agreement.

Upgrades

The yacht Loon has undergone significant upgrades and maintenance to ensure it remains in top condition. In April 2025, the yacht completed its 15-year survey and shipyard period at Rybovich in West Palm Beach, Florida, with a total investment of \$3,300,000. This extensive work included a 15-year Lloyds Class survey, bottom painting with Prop Speed, and an overhaul of the side boarding ladder. The tender crane and Solace crane were serviced, and all

thru-hull valves were either serviced or replaced. The stabilizers received an 8,000-hour service, and all life-saving appliances (LSA) were serviced. Additionally, all onboard tenders were serviced, and the windlasses were overhauled with the chain dropped and calibrated. The capstans and hydraulic sensors were also overhauled. The main engines underwent a 10,000-hour service, including work on the heat exchangers and cooler, while the ZF gearboxes were serviced. The shafts were inspected and serviced, with shaft seals replaced. The generators received servicing, and the HUG filters underwent a 9,000-hour service. The main and emergency switchboards were serviced and cleaned, and the frequency drives were serviced. A hull thickness and measurement inspection was conducted, and the bow thruster, which was rebuilt in 2022, was serviced. The galley and laundry extraction ducting were cleaned and serviced, and all fan coils were either serviced or replaced. Central cooling pumps were serviced or overhauled, and the RVB rails were repainted with new non-skid. Exterior windows were recaulked, and all exterior white paint was polished using the YSR multi-step polishing system. The main deck received a new black wrap. In 2023 and 2024, further enhancements were made, including a complete bridge refit in 2023, which involved rebuilding the console and navigation desk, and the installation of five new Hatteland displays. The main deck pool was converted to fresh water with a drop tank and water heater, and new pool deck cushions were added in 2024. The hull was wrapped in 2023, and all three generators were rebuilt in 2024. These upgrades ensure that the yacht Loon remains a modern and luxurious vessel, ready to provide exceptional experiences for its guests.

CONTACTS

Shestakov Yacht Sales is a brokerage company specializing in the sale and service of yachts worldwide. The company offers services for buying and selling both new and used motor yachts, sailing vessels, and luxury superyachts. They also provide yacht registration, insurance, technical maintenance, crew selection, and charter organization services across the U.S., Canada, Latin America, the Caribbean, and the Bahamas.

The founder and lead broker of the company is Andrey Shestakov, a licensed and certified expert with extensive experience in marine engineering and shipbuilding.

The company has an extensive network of partnerships with major yacht manufacturers worldwide and provides services in multiple languages, including Russian, Ukrainian, Spanish, and English. The office is in Dania Beach, Florida, USA.

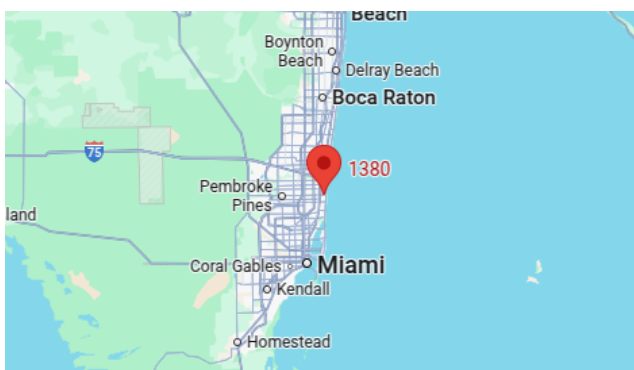
For more information and to view available yachts, you can visit the company's official website: <https://shestakovyachtsales.com>

Contact details

Phone: +1(954)274-4435

Email: andrey@shestakovyachtsales.com

Address



1380 Weeping Willow Way, Hollywood,
Florida 33019