

TALISMAN C - PROTEKSAN-TURQUOISE



Builder:

[PROTEKSAN-TURQUOISE](#)

Year Built:

2011

Model:

N/A

Price:

[See on website](#)

Location:

Marmaris, Turkey

Max Speed:

18 Knots (20.71 MPH)

LOA:

231' 0" (70.6 mm)

Beam:

39' 0" (12.1 mm)

Min Draft:

- (0 mm)

Max Draft:

13' 1" (4 mm)

Cruising Speed:

15 Knots (17.26 MPH)

TABLE OF CONTENTS

Overview	5
Specifications	6
Basic Information	6
Dimensions	6
Speed, Capacities and Weight	6
Accommodations	7
Hull and Deck Information	7
Gallery	8
Contacts	18

OVERVIEW

The magnificent 70.5m (231.2ft) TALISMAN C boasts a robust steel hull and an elegant aluminium superstructure, meticulously crafted to meet Lloyd's classification and MCA standards by the esteemed Turkish shipyard Proteksan Turquoise, with her delivery completed in 2011. The yacht's stunning interior and exterior design is the work of the renowned London-based studio H2 Yacht Design, while the engineering excellence comes from the Italian naval architect Hydro Tec.

Onboard, the exterior deck areas are a true delight, featuring sun loungers atop the crow's nest observation lounge, which is sheltered by glass bulwarks that protect against the wind while offering breathtaking views. The yacht is designed to provide exceptional sightlines throughout, enhancing the overall experience.

The sun deck is a luxurious retreat, featuring a spacious glass-backed jacuzzi at the front, surrounded by sunpads, a stylish sit-up bar, a day bed, and an elegant dining area beneath the hardtop, complemented by ample sunbathing spots. The upper deck aft offers additional open-air dining options, also served by a sit-up bar, along with two L-shaped sun lounges that extend beyond the overhang. Walkaround sidedecks allow guests to fully engage with the stunning surroundings.

The main deck aft is designed for relaxation, featuring sun lounge seating and steps leading up to a sunpad that overlooks the swim platform. A central staircase descends to the beach club, complete with a dayhead and a generous swim platform that unfolds from the transom.

From the main deck aft, elegant curved sliding glass doors open into a fully equipped bar area with club seating, leading to a sophisticated saloon furnished with a sofa and armchairs around a coffee table, as well as a formal dining space adorned with a striking glass-thread chandelier.

Conveniently located off the main lobby is a dayhead, along with a gym and wellness area featuring a massage table and beauty salon, situated to starboard along a corridor that leads to the VIP and owner's suites. A stunning spiral staircase winds around an intricate glass sculpture, illuminated by natural light streaming in from the skylight above the sun deck.

The sky lounge offers a cozy seating area and a gaming table, with sliding glass doors that open onto the aft deck entertainment space. Just forward of the upper deck lobby, a media room is equipped with a 42-inch TV and a Playstation for leisurely entertainment.

TALISMAN C accommodates up to 12 guests across six luxurious cabins. The owner's suite, located at the front of the main deck, features a boudoir-inspired decor with delicate voile curtains surrounding the king-sized bed, complemented by crystal chandeliers serving as bedside reading lights. The en suite bathroom showcases glossy two-tone wood veneers and gold mosaic tiles, complete with a spa bath and shower. A spacious walk-in wardrobe and a private library (which can be converted into an additional cabin) enhance the suite's allure. The VIP suite is conveniently located aft of the owner's suite, while the lower deck houses additional guest cabins, including two twin cabins and two double cabins, all featuring stylish spa bath en suites.

Powered by twin 2,447hp Caterpillar diesel engines, TALISMAN C achieves a top speed of 18 knots, a cruising speed of 15 knots, and boasts an impressive transatlantic range of 7,000 nautical miles at a passage speed of 12 knots. The lower deck also features a full-beam tender and toy garage, capable of launching a 7.7m (25.3ft) Ski Nautique and a 7m (23ft) Novurania tender through shell doors on either side.

This exquisite yacht is currently available for sale, making it an exceptional opportunity for those looking to buy a yacht in the current boat location. Explore the luxury yacht sales in the area and discover the unparalleled

elegance of TALISMAN C.

SPECIFICATIONS

Basic Information

Category:
Motor yachts

Sub category:

Model Year:
2011

Year Built:
2011

Country:
Turkey

Dimensions

LOA:
231' 0" (70.6 mm)

Min Draft:
- (0 mm)

Beam:
39

Max Draft:
13' 1" (13.123 mm)

Speed, Capacities and Weight

Cruise Speed:
15 Knots (17.26 MPH)

Cruise Speed Range:
0 Kts.

Max Speed:
18 Knots (20.71 MPH)

Max Speed Range:
0 Kts.

Gross Tonnage:
1560 Pounds

Water Capacity:
9563.03 Gallons.

Holding Tank:
0 Gallons

Fuel Capacity:
53838.26 Gallons

Accommodations

Total Cabins:

—

Total Berths:

—

Sleeps:

12

Total Heads:

0

Crew Cabin:

12

Crew Berths:

20

Crew Heads:

—

Hull and Deck Information

Hull Material:

Steel Yachts

Deck Material:

Steel

Hull Configuration:

Displacement w Bulbous Bow

Hull Designer:

N/A

Interior Designer:

H2 Yacht Design

Engine Information

Engines:

2

Manufacturer:

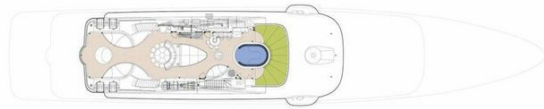
Caterpillar

Engine Type:

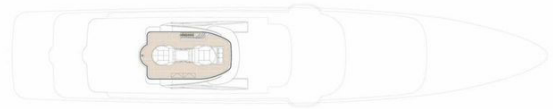
Fuel Type:

Diesel

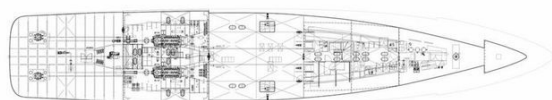
GALLERY

SUN DECK

■ GUEST AREAS ■ OWNER'S SUITE ■ VIP SUITES ■ GUEST CABINS ■ OWNER'S OFFICE ■ GYM ■ JACUZZI

HARDTOP

■ GUEST AREAS ■ OWNER'S SUITE ■ VIP SUITES ■ GUEST CABINS ■ OWNER'S OFFICE ■ GYM ■ JACUZZI

BILGE DECK

■ GUEST AREAS ■ OWNER'S SUITE ■ VIP SUITES ■ GUEST CABINS ■ OWNER'S OFFICE ■ GYM ■ JACUZZI

MAIN DECK

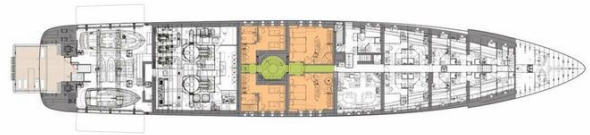
■ GUEST AREAS ■ OWNER'S SUITE ■ VIP SUITES ■ GUEST CABINS ■ OWNER'S OFFICE ■ GYM ■ JACUZZI

UPPER DECK



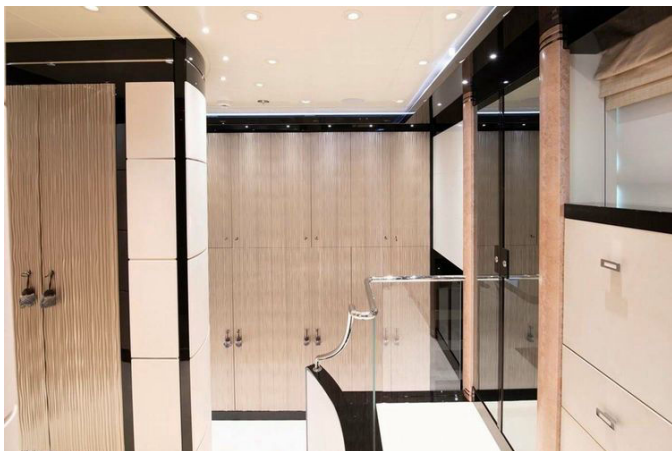
■ GUEST AREAS ■ OWNER'S SUITE ■ VIP SUITES ■ GUEST CABINS ■ OWNER'S OFFICE ■ C/M ■ JACUZZI

LOWER DECK



■ GUEST AREAS ■ OWNER'S SUITE ■ VIP SUITES ■ GUEST CABINS ■ OWNER'S OFFICE ■ C/M ■ JACUZZI

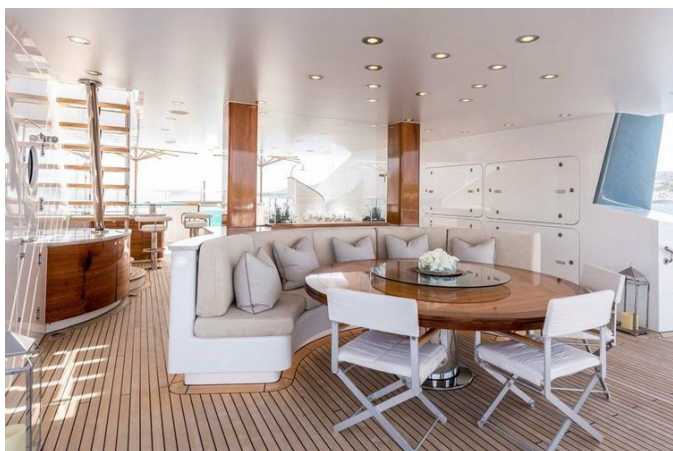


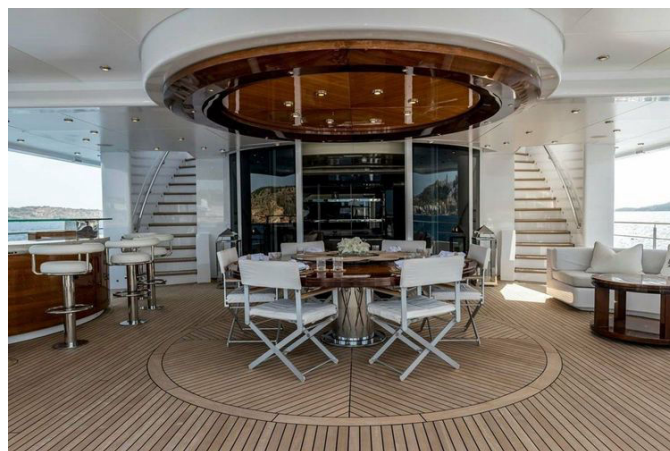
















CONTACTS

Shestakov Yacht Sales is a brokerage company specializing in the sale and service of yachts worldwide. The company offers services for buying and selling both new and used motor yachts, sailing vessels, and luxury superyachts. They also provide yacht registration, insurance, technical maintenance, crew selection, and charter organization services across the U.S., Canada, Latin America, the Caribbean, and the Bahamas.

The founder and lead broker of the company is Andrey Shestakov, a licensed and certified expert with extensive experience in marine engineering and shipbuilding.

The company has an extensive network of partnerships with major yacht manufacturers worldwide and provides services in multiple languages, including Russian, Ukrainian, Spanish, and English. The office is in Dania Beach, Florida, USA.

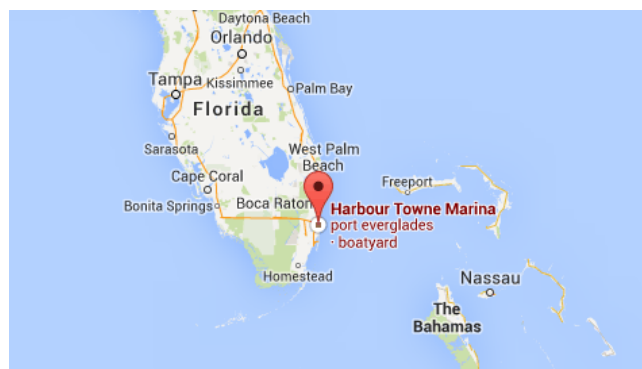
For more information and to view available yachts, you can visit the company's official website: <https://shestakovyachtsales.com>

Contact details

Phone: +1(954)274-4435

Email: andrey@shestakovyachtsales.com

Address



Harbour Towne Marina, 850 NE 3rd St,
STE 213,
Dania, FL 33004