

NO NAME - YAMAHA



Builder: [YAMAHA](#)

Beam: 8' 0" (2.59 m)

Year Built: 2013

Min Draft: 4' 4" (1.33 m)

Model: 242 Limited S

Price: \$29,850 USD Subject to change.

[See full listing on our website](#)

Location: Venice, United States

LOA: 24' 0" (7.32 m)

TABLE OF CONTENTS

OVERVIEW

3

SPECIFICATIONS

4

Basic Information

4

Dimensions

4

Speed, Capacities and Weight

4

Hull and Deck Information

5

Engine Information

5

GALLERY

6

DETAILED DESCRIPTION

14

CONTACTS

16

OVERVIEW

This striking 2013 Yamaha 242 Limited S melds refined styling with exhilarating performance, driven by twin Yamaha 1.8 liter inboard jet drives that produce a combined 360 horsepower and deliver rapid, confident planing. With just 639 hours on the gauges, this jet boat invites many more sun-soaked outings before routine service is required, while its generous 50 gallon fuel tank lets you spend the day exploring without constant refueling.

From bow to transom the layout is generous and sociable, offering ample seating for guests and the flexibility to fit a Porti Potti or convert the area to extra storage as your needs dictate. The expansive swim platform provides effortless water access and the peace of mind that comes with jet propulsion—no exposed propellers to worry about—while the shallow 1'8" draft encourages forays into hidden coves, pristine beaches and popular sandbars near the current boat location.

Inside and out the color contrast is eye-catching, and Sea Decking across all traction surfaces enhances footing and comfort, staying noticeably cooler underfoot on bright days. The wakeboard tower detaches easily for convenient storage and can be reinstalled without fuss; a dedicated rinse station by the swim platform keeps everyone free of sand and salt after a day on the water. Long-item storage within the hull accommodates skis, inflatables and other gear, and a thoughtfully positioned ladder makes bow access simple and safe. A careful inspection of the hull shows it has never been beached, reflecting the vessel's excellent condition and attentive ownership. Equally suited for spirited fishing trips or leisurely afternoons afloat, this yacht for sale is ready to be enjoyed now. Explore yacht sales in the current boat location and claim this luxurious, well-equipped Yamaha 242 Limited S as your own.

SPECIFICATIONS

Basic Information

Category:
Motor yachts

Year Built:
2013

Model Year:
2013

Country:
United States

Dimensions

LOA:
24' 0" (7.32 m)

Beam:
8' 0" (2.59 m)

Min Draft:
4' 4" (1.33 m)

Speed, Capacities and Weight

Water Capacity:
8 Gallons

Fuel Capacity:
50 Gallons

Hull and Deck Information

Hull Material:

Fiberglass and Plastic Yachts

Hull Designer:

N/A

Deck Material:

Fiberglass

Interior Designer:

N/A

Hull Configuration:

Monohull

Engine Information

Engines:

2

Engine Type:

Inboard

Manufacturer:

Yamaha

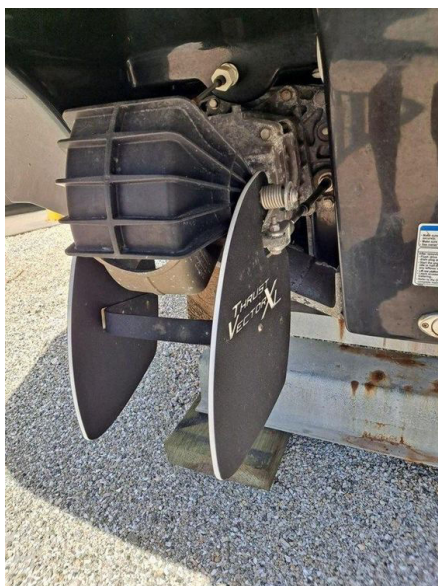
Fuel Type:

Gas/Petrol

GALLERY

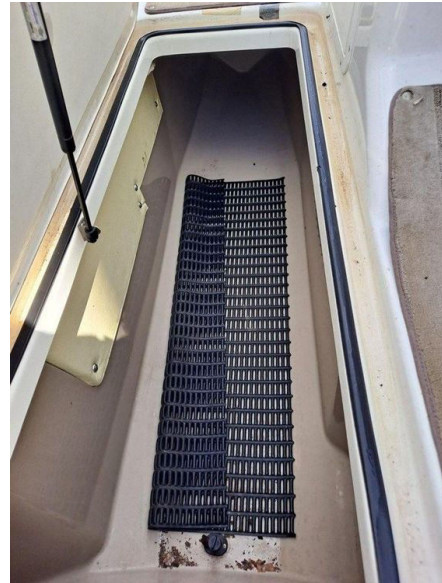


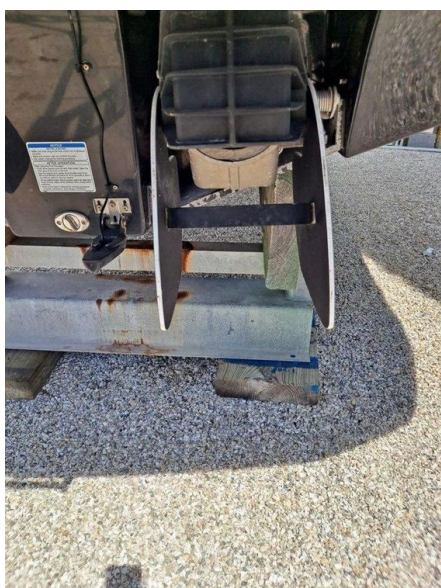














DETAILED DESCRIPTION

Section name

The Yamaha's flagship 242 Limited S delivers the most rewarding boating experience on the water, inviting you aboard a luxurious vessel whose welcoming bow offers a variety of comfortable seating configurations ideal for both relaxation and socializing. The all-new dash is crafted to evoke the look and feel of a high-end luxury car, with state-of-the-art gauges that place essential information clearly at your fingertips. A forward-swept folding tower becomes an elegant focal point, integrating LED cockpit lighting and flush-mounted speakers that elevate both aesthetics and functionality, while the two-tier lounge is lavishly appointed with upholstered back and seat rests, complemented by strategically placed stainless steel cup holders and premium Polk® speakers for an exceptional audio experience. For moments of refreshment the freshwater shower provides a delightful rinse after a swim, and every detail of the 242 Limited S — from its thoughtful ergonomics to its refined finishes — makes it the perfect platform for creating sunset memories that will last a lifetime.

Details

The Yamaha 242 Series stands at the pinnacle of sophistication and refinement within the Yamaha boat line, and the flagship 242 Limited S elevates that promise as the watersports edition with a premium black fold-down aluminum tower that integrates cockpit lighting and speakers for a commanding presence on the water. Offered in striking colorways — Blue with an Aluminum Tower, Black with a Black Tower, and Champagne with a Black Tower — the 242 Series immediately asserts itself with a tall freeboard and an expansive bow seating area that is both wide and long enough to accommodate the

tallest passengers, including Yamaha's exclusive rumble-seat style forward seating that provides a playful, front-facing point of view. Premium marine-grade upholstery, stainless-steel handrails, a bow ladder, anchor locker and bow docking lights exclusive to the 242 Limited S complete the bow's functionality and luxury. The innovative helm is minimalist yet sophisticated, with large analog gauges paired with integrated digital displays that deliver GPS-based information including latitude, longitude, compass heading and real-time fuel flow data; Yamaha's exclusive Cruise Assist™ and No Wake Mode™ further enhance control and ease of operation. Entertainment and convenience are equally prioritized with a premium Clarion® stereo, MP3 and USB inputs, and a remote on the swim platform, while the series features six waterproof speakers, including two on the swim platform and additional tower speakers on the Limited S. A fully enclosed, carpeted head compartment, abundant storage, a dinette table and a large removable cooler add practical comfort to the cockpit. The award-winning stern design offers a two-tier lounge and swim platform that simplify reboarding and invite socializing, with plush padded backrests and seating pads, a rear stereo remote, Hydro-Turf® deck mats, an integrated freshwater shower and stainless steel cupholders enhancing the aft experience. Underneath it all, Yamaha's dual internal drive propulsion system driven by twin 1.8L Yamaha Marine engines delivers class-leading performance, reliability and durability, with a thrust directional enhancer that maximizes control and maneuverability and makes low-speed handling exceptionally responsive; the 242 Series achieves faster acceleration and greater top speed than comparable stern drive models. Standard amenities such as a Bimini Top, premium marine vinyl upholstery, Berber carpet, and stainless steel cup holders, rubrails and pull-up cleats round out a masterpiece of engineering and design that offers an unmatched boating experience.

CONTACTS

Shestakov Yacht Sales is a brokerage company specializing in the sale and service of yachts worldwide. The company offers services for buying and selling both new and used motor yachts, sailing vessels, and luxury superyachts. They also provide yacht registration, insurance, technical maintenance, crew selection, and charter organization services across the U.S., Canada, Latin America, the Caribbean, and the Bahamas.

The founder and lead broker of the company is Andrey Shestakov, a licensed and certified expert with extensive experience in marine engineering and shipbuilding.

The company has an extensive network of partnerships with major yacht manufacturers worldwide and provides services in multiple languages, including Russian, Ukrainian, Spanish, and English. The office is in Dania Beach, Florida, USA.

For more information and to view available yachts, you can visit the company's official website: <https://shestakovyachtsales.com>

Contact details

Phone: +1(954)274-4435

Email: andrey@shestakovyachtsales.com

Address



1380 Weeping Willow Way, Hollywood,
Florida 33019