

## 2019 MONTEREY 278 SS KNX - MONTEREY



**Builder:** [MONTEREY](#)

**Beam:** 8' 0" (2.59 m)

**Year Built:** 2019

**Min Draft:** 6' 10" (2.08 m)

**Model:** 278 SS

**Max Draft:** 10' 11" (3.33 m)

**Price:** \$69,900 USD Subject to change.

[See full listing on our website](#)

**Location:** Knoxville, United States

**LOA:** 26' 0" (8.13 m)

---

# TABLE OF CONTENTS

---

<b>OVERVIEW .....</b>	<b>3</b>
<b>SPECIFICATIONS .....</b>	<b>5</b>
Basic Information .....	5
Dimensions .....	5
Speed, Capacities and Weight .....	5
Accommodations .....	5
Hull and Deck Information .....	6
Engine Information .....	6
<b>GALLERY .....</b>	<b>7</b>
<b>DETAILED DESCRIPTION .....</b>	<b>42</b>
<b>CONTACTS .....</b>	<b>44</b>

## OVERVIEW

---

This stunning 2019 Monterey 278 Super Sport Bowrider is now on the market near Knoxville, TN. It features a robust 5.3L Volvo Penta 350HP MPI V8 engine with an inboard/outboard configuration and DuoProp outdrive, delivering exhilarating power on the water. Inside, you'll discover a tastefully designed enclosed head compartment equipped with a Tecma electric flush toilet, 12V lighting, a screened port window, a vanity sink, and a waste holding tank with easy dockside pumpout access.

The yacht is offered with a mooring cover, along with bow and cockpit covers, ensuring superior protection against the elements. The electric folding wakeboard tower, complete with a bimini top, elevates your water sports experience. Revel in the enhanced AM/FM/USB/Aux-Input/Bluetooth/NOAA Weatherband/SiriusXM-ready stereo system, which includes zoned audio, cockpit controls, and an array of speakers, such as four cockpit speakers, two tower speakers, a subwoofer, and amplifiers for a rich auditory experience.

The interior is adorned with elegant SeaDek flooring throughout, extending to the swim platform. The engine compartment ingeniously transforms into a sun lounge, while the seating configurations provide both forward and rear-facing options, featuring a flip-up bolster for extra comfort. The driver's helm is equipped with a flip-up bolster seat and a cutting-edge 12" dynamic touchscreen display, incorporating Raymarine GPS/chartplotter, engine data, air/water temperature, depth finder, and equipment controls.

Other notable features of this yacht include a Ritchie compass, hydraulic trim tabs with indicators, a removable lounge table that can be positioned in the cockpit or bow area, bow filler cushions, and a powered engine hatch.

Completing this magnificent vessel is a 2023 Boat Mate tandem axle trailer, equipped with dual disc brakes, a swing tongue, guide-posts, and more. Seize the opportunity to own a yacht that seamlessly combines luxury and

performance at its current location! Discover yacht sales in the vicinity and claim this extraordinary vessel as your own today.

# SPECIFICATIONS

---

## Basic Information

---

**Category:**  
Motor yachts

**Year Built:**  
2019

**Model Year:**  
2019

**Country:**  
United States

## Dimensions

---

**LOA:**  
26' 0" (8.13 m)

**Beam:**  
8' 0" (2.59 m)

**Min Draft:**  
6' 10" (2.08 m)

**Max Draft:**  
10' 11" (3.33 m)

## Speed, Capacities and Weight

---

**Water Capacity:**  
15 Gallons

**Fuel Capacity:**  
80 Gallons

## Accommodations

---

**Total Heads:**  
1

## Hull and Deck Information

---

**Hull Material:**

Fiberglass and Plastic Yachts

**Hull Designer:**

Monterey Boats

**Deck Material:**

Fiberglass

**Interior Designer:**

Monterey Boats

**Hull Configuration:**

Modified V-Hull

## Engine Information

---

**Engines:**

1

**Engine Type:**

I/O

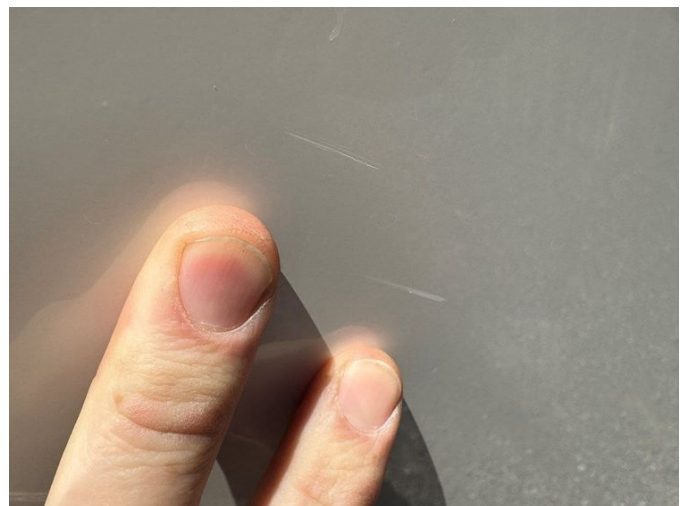
**Manufacturer:**

Volvo Penta

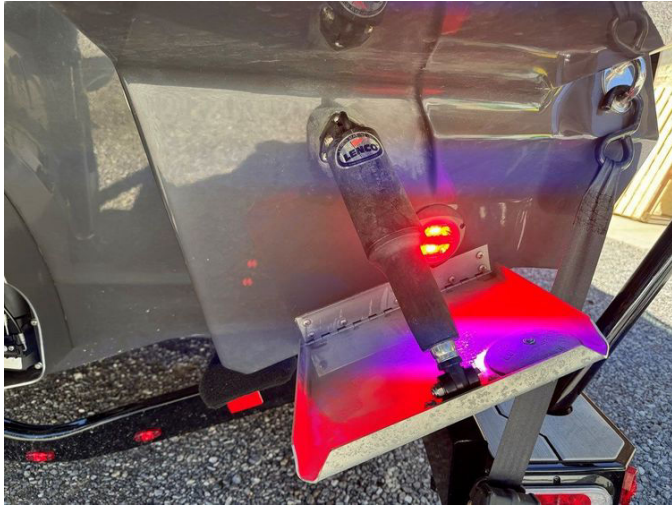
**Fuel Type:**

Gas/Petrol

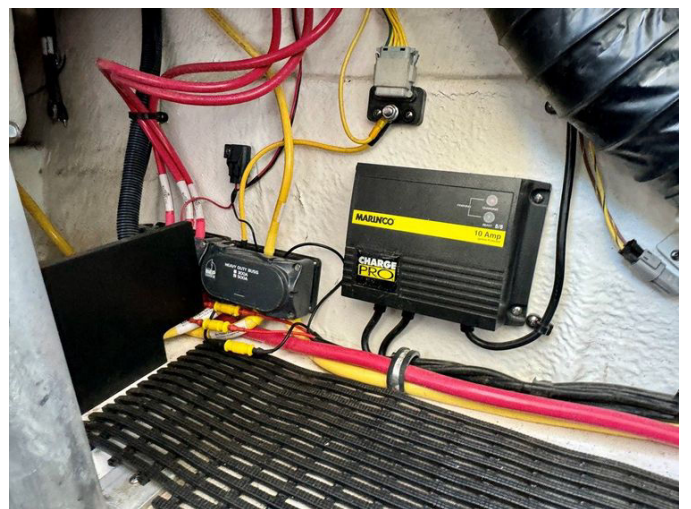
# GALLERY

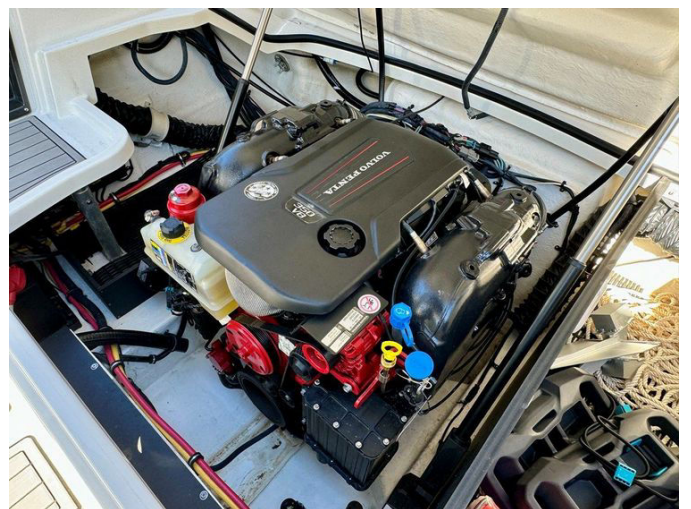
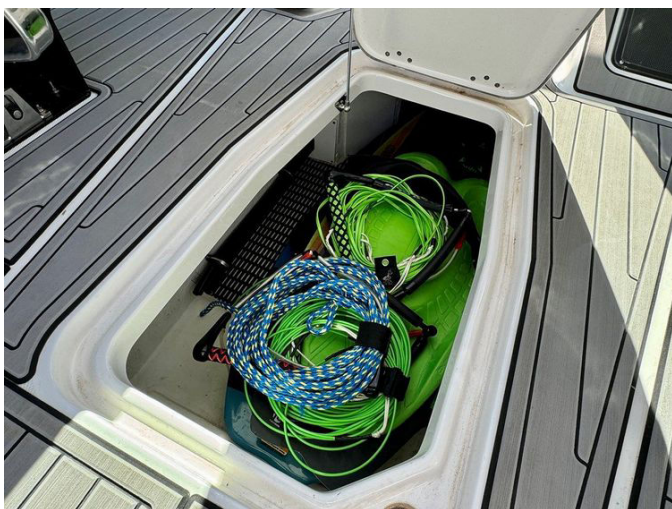
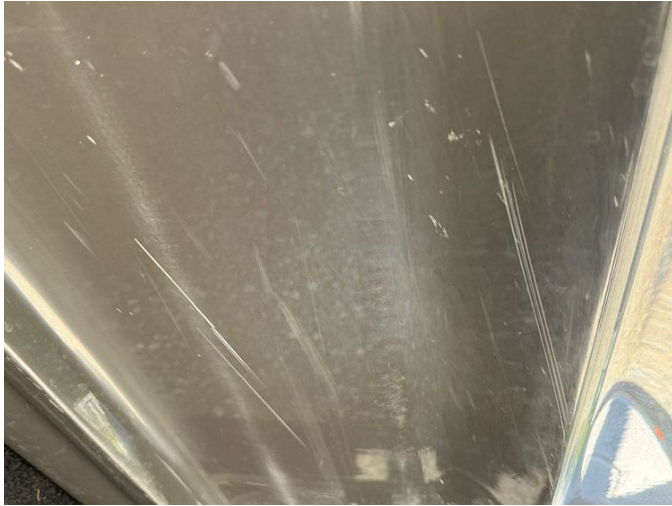


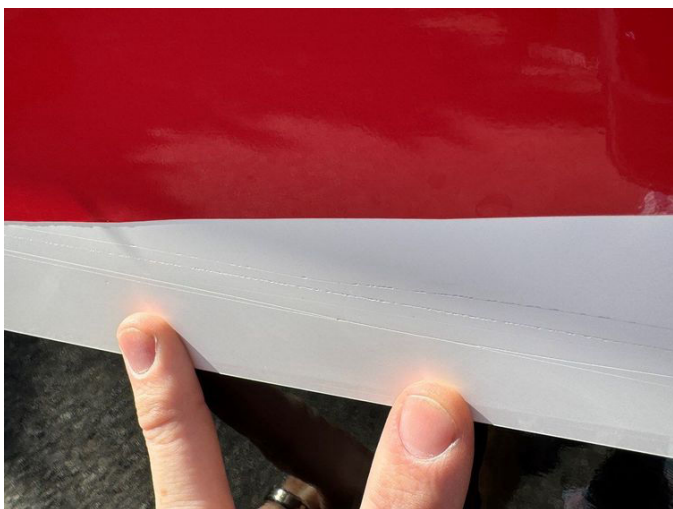
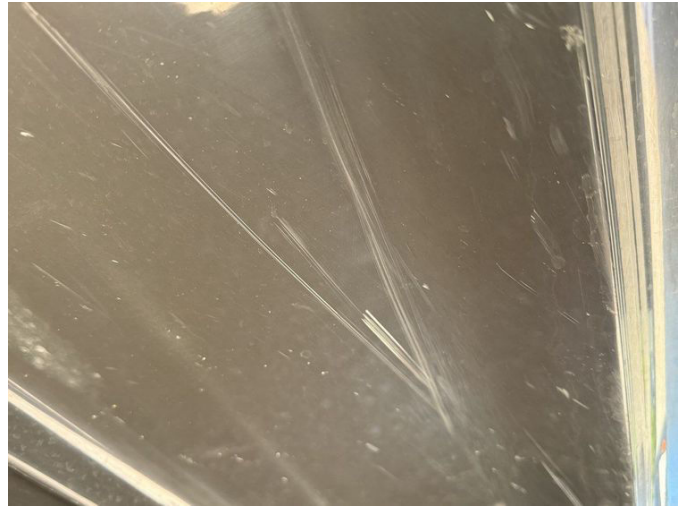


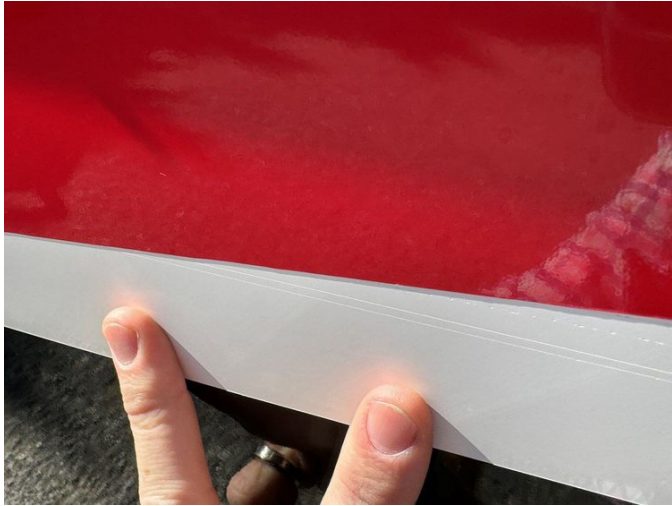


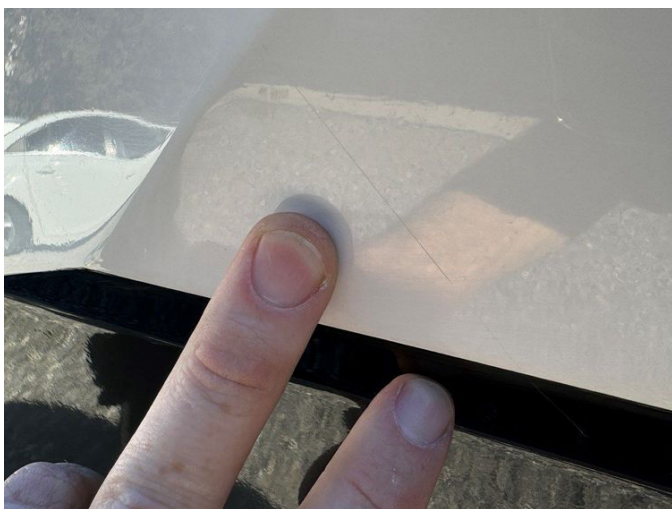




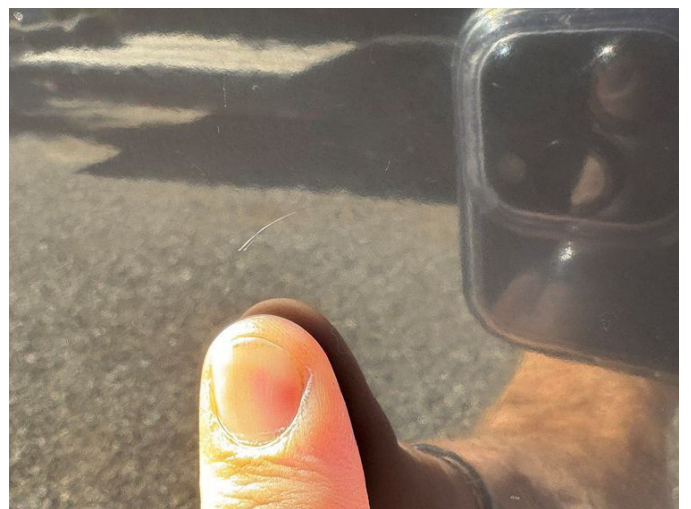
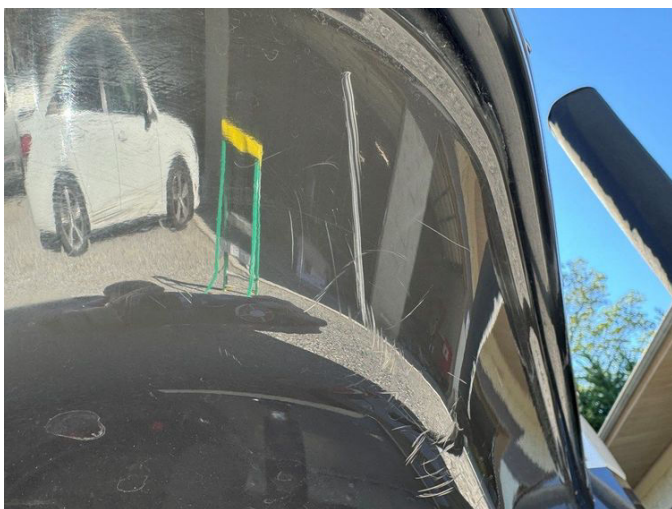


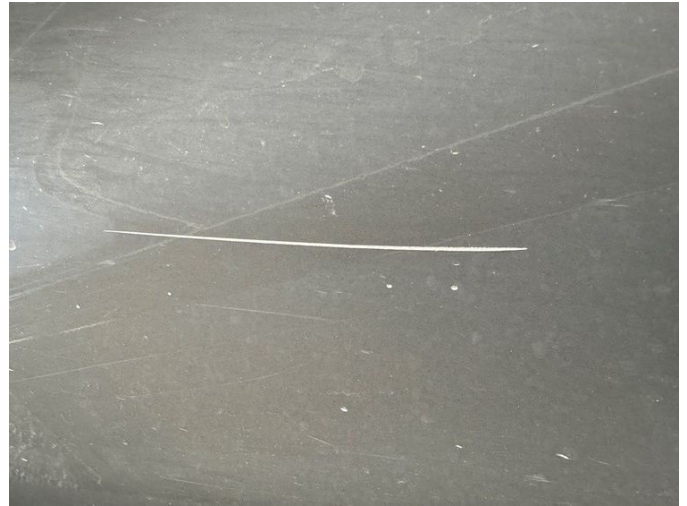


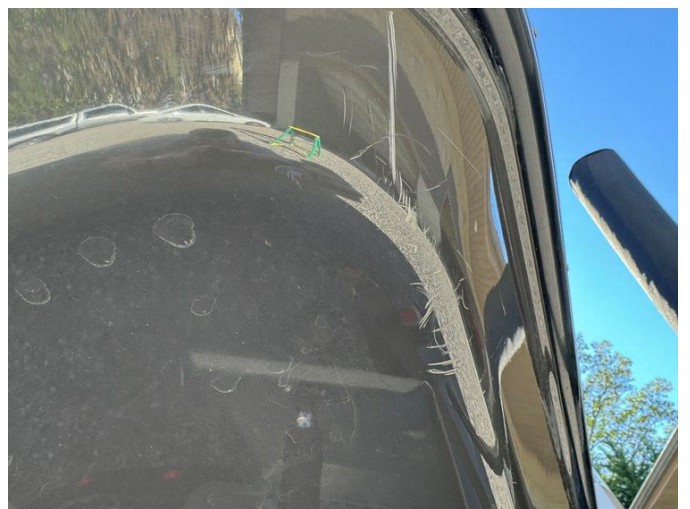




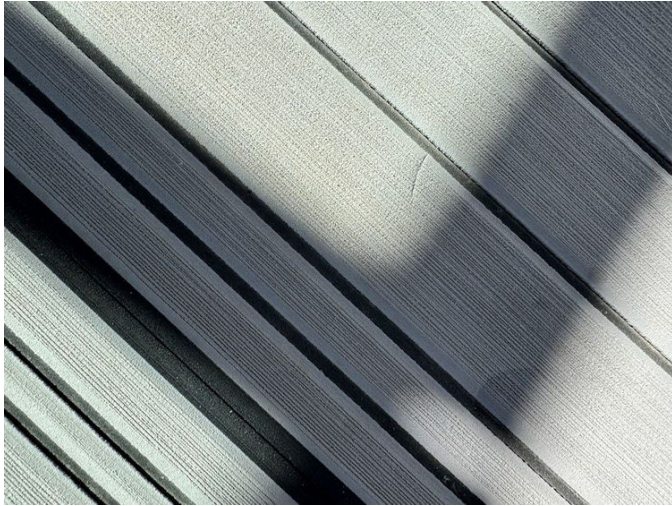


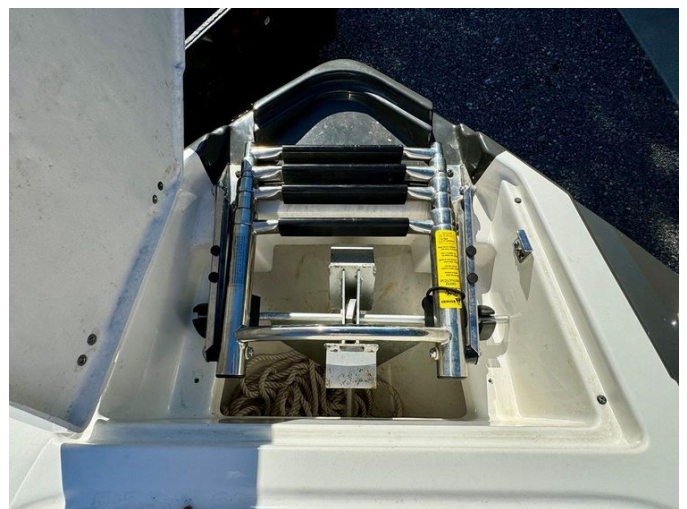


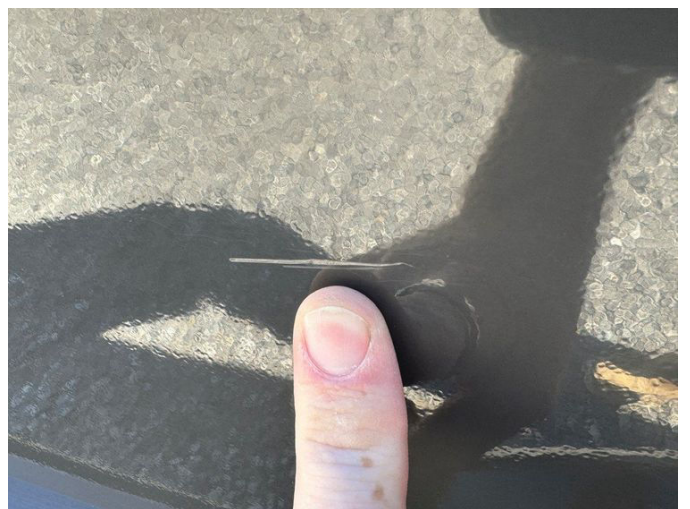
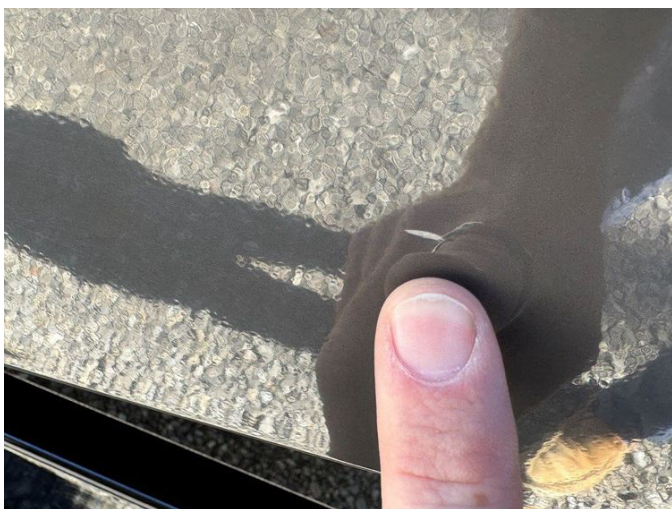
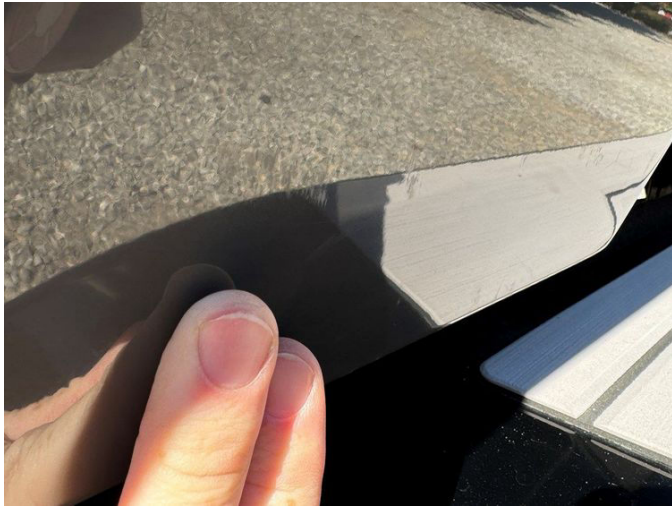


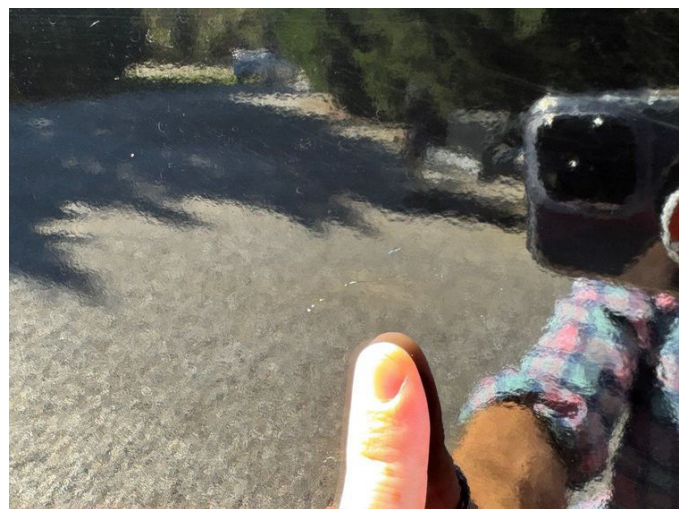
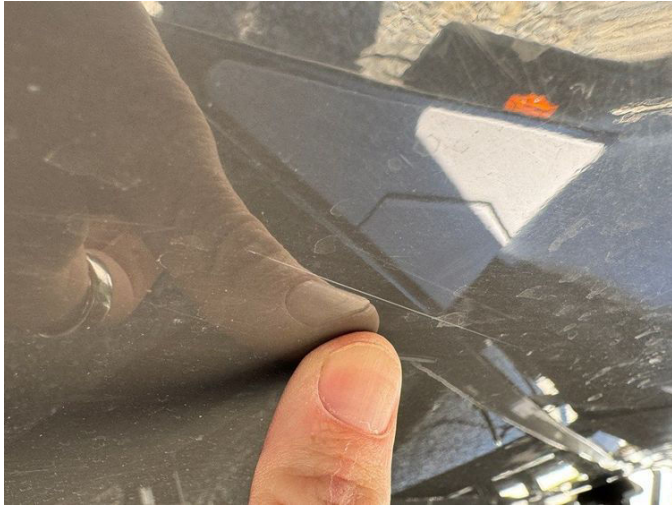






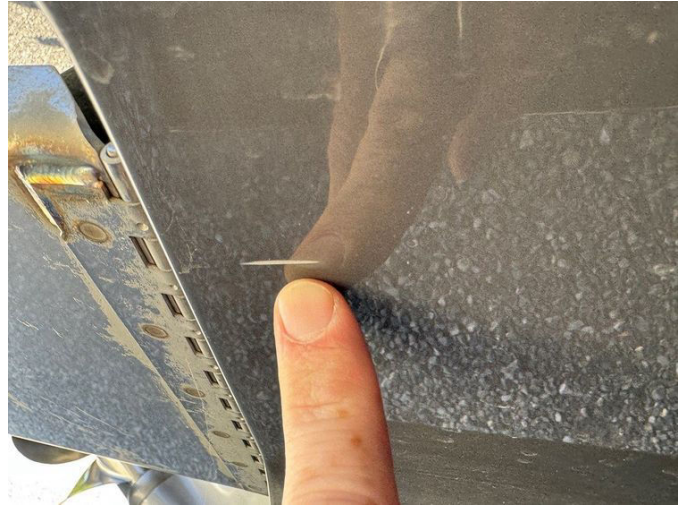


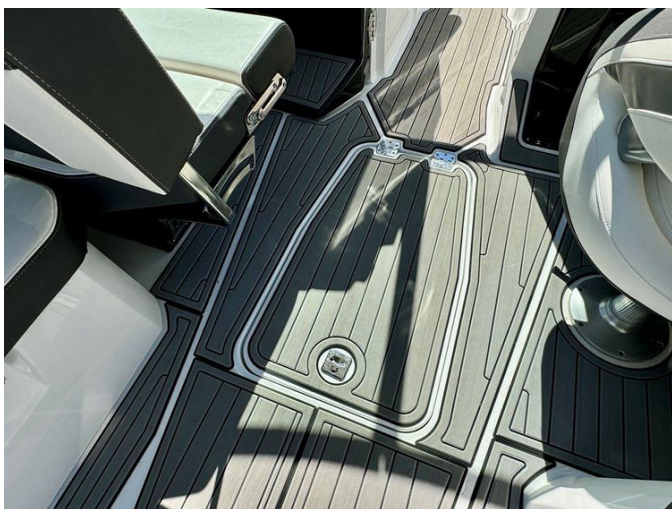


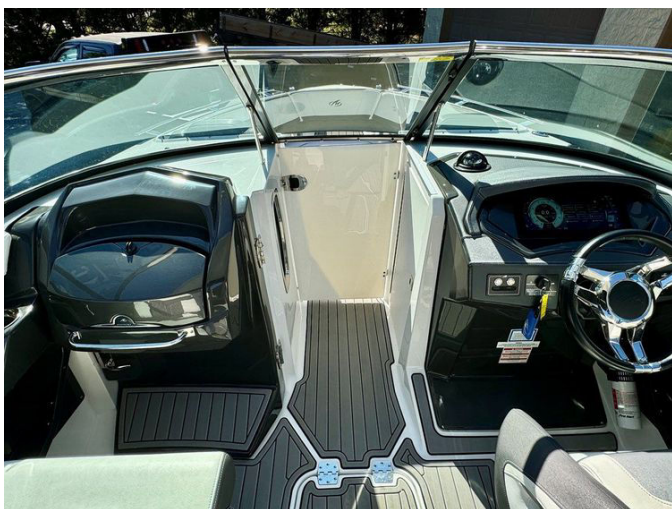






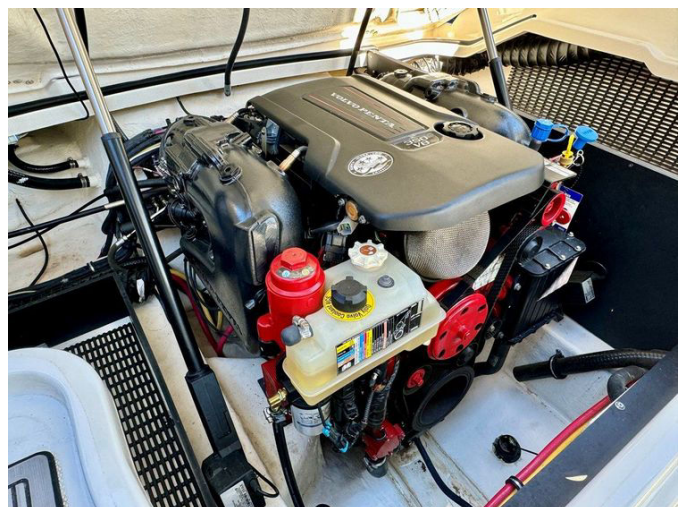










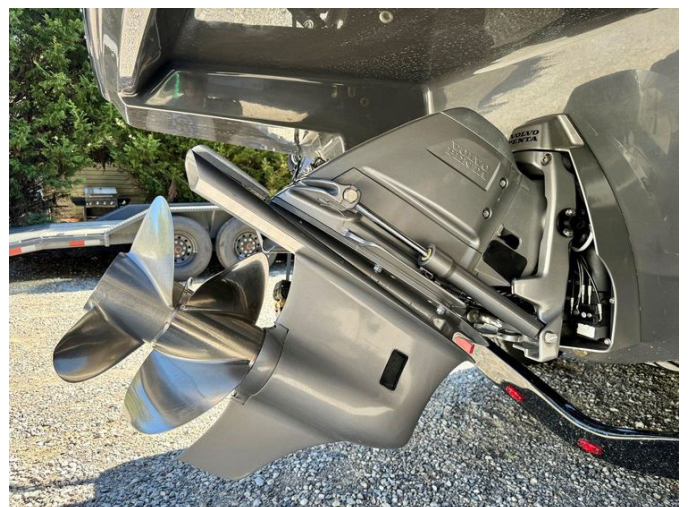


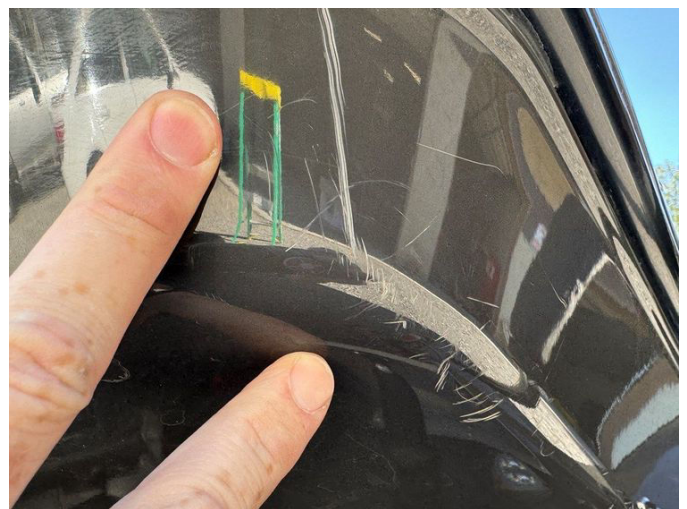




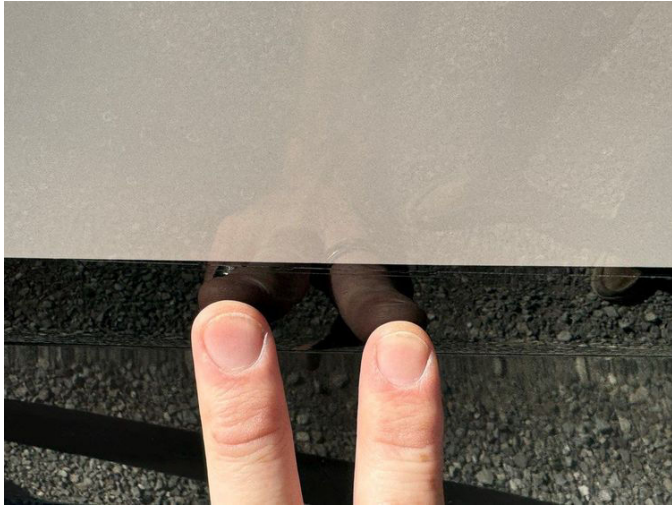


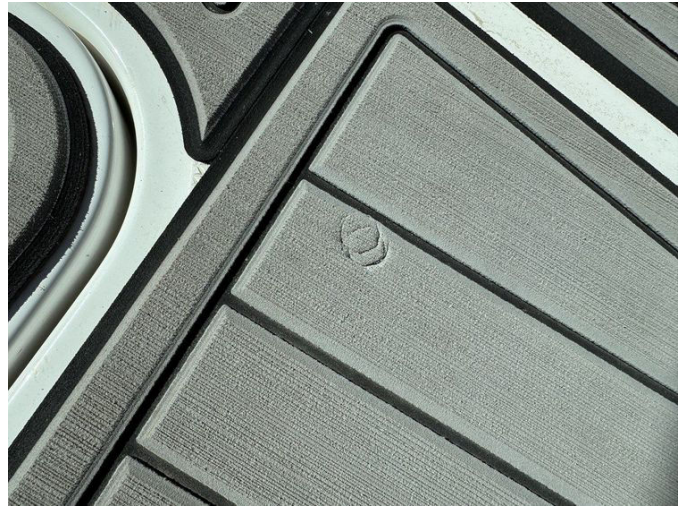












---

# DETAILED DESCRIPTION

---

## Features & Specs

---

This exceptional vessel is driven by a powerful 5.3L Volvo Penta 350HP MPI V8 engine with an inboard/outboard setup and DuoProp outdrive, having clocked only 293 hours. It boasts a private head compartment fitted with an electric Tecma toilet, 12V lighting, a screened port window, and a vanity sink, providing both comfort and convenience on your voyages. The yacht is safeguarded by a mooring cover, along with cockpit and bow covers, and features an anchor compartment complete with an anchor, chain, and rode, enhanced by a stainless steel bow scuff plate.

For water sports enthusiasts, the yacht is outfitted with an electric folding wakeboard tower, complete with a bimini top and two tower speakers. The entertainment system is exceptional, featuring an AM/FM/USB/Aux-Input/Bluetooth/NOAA Weatherband/SiriusXM-ready stereo with controls at the transom, driver, and cockpit. The audio experience is further elevated by four JL Audio illuminated cockpit speakers, two JL Audio tower speakers, two JL Audio amplifiers, and a JL Audio subwoofer.

Navigation and control are simplified with the Medallion 12" dynamic touchscreen display and Raymarine A67 GPS/chartplotter, which integrates engine data. Additional features include zoned audio controls, air and water temperature readings, a depth finder, and integrated equipment and accessory controls. A Ritchie compass and Lenco hydraulic trim tabs with an indicator ensure precise handling, while dual USB and 12-volt power outlets offer ample charging options.

The yacht is illuminated by an LED lighting package, which includes cockpit, arch, compartment, and docking lights, as well as color-changing underwater lights. The SeaDek swim platform and cockpit flooring provide a comfortable

and stylish surface throughout, with a walk-thru transom door for easy access. An extended swim platform, along with bow and stern 4-step swim boarding ladders and a transom-mount drive trim switch, enhance the swimming experience.

Inside, the yacht features a bow walk-thru windblock, ten stainless steel cupholders, a flip-up driver bolster seat, and a tilt steering wheel. The passenger seat includes a flip-up bolster with a forward/rear-facing seat back, and an integrated cockpit cooler keeps refreshments chilled. The adjustable rear sun lounge offers forward/rear-facing and lounge seating options, while a powered engine hatch provides easy access to the engine.

Bow seating includes fold-up/down armrests and bow filler cushions, and a removable lounge table with dedicated storage can be mounted in both the bow and cockpit. Six pull-up stainless steel cleats, an in-floor storage locker, an under-helm locker with a hanging rod, and under-seat storage throughout ensure ample space for all your gear. The pressure water system includes a 15-gallon fresh water tank and an 11-gallon waste holding tank with dockside pump-out capabilities.

With an 80-gallon fuel tank, dual batteries with a battery switch, and a Marinc dual bank onboard battery charger, this yacht is ready for extended adventures. Measuring 26' 8" in length with an 8' 6" beam, it is yacht certified and rated for 15 persons, with a dry weight of 5,500 lbs. The yacht has an 8' 2" bridge clearance, a 40" draft, and a 20° deadrise at the transom.

Included with the yacht is a 2023 BoatMate tandem axle trailer, featuring dual disc brakes, a swing tongue, transom tie-down straps, and guide posts. As the second owner, you can take pride in knowing this yacht has always been used in fresh water, ensuring its pristine condition.

# CONTACTS

---

Shestakov Yacht Sales is a brokerage company specializing in the sale and service of yachts worldwide. The company offers services for buying and selling both new and used motor yachts, sailing vessels, and luxury superyachts. They also provide yacht registration, insurance, technical maintenance, crew selection, and charter organization services across the U.S., Canada, Latin America, the Caribbean, and the Bahamas.

The founder and lead broker of the company is Andrey Shestakov, a licensed and certified expert with extensive experience in marine engineering and shipbuilding.

The company has an extensive network of partnerships with major yacht manufacturers worldwide and provides services in multiple languages, including Russian, Ukrainian, Spanish, and English. The office is in Dania Beach, Florida, USA.

For more information and to view available yachts, you can visit the company's official website: <https://shestakovyachtsales.com>

## Contact details

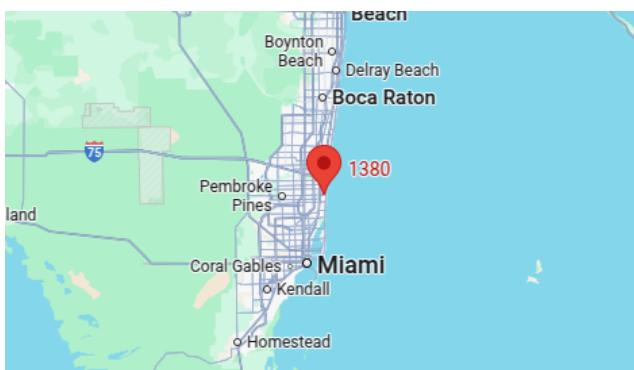
---

**Phone:** +1(954)274-4435

**Email:** [andrey@shestakovyachtsales.com](mailto:andrey@shestakovyachtsales.com)

## Address

---



1380 Weeping Willow Way, Hollywood,  
Florida 33019