

ASEAN LADY - PRIDE MEGA YACHTS



Builder: [PRIDE MEGA YACHTS](#)

LOA: 289' 0" (88.15 m)

Year Built: 2004

Beam: 69' 0" (21.20 m)

Model: PROA 88

Min Draft: 11' 6" (3.50 m)

Price: \$15,000,000 USD Subject to change.

Cruising Speed: 12 Knots (13.81 MPH)

[See full listing on our website](#)

Location: Langkawi, Malaysia

Max Speed: 15 Knots (17.26 MPH)

TABLE OF CONTENTS

OVERVIEW	3
SPECIFICATIONS	4
Basic Information	4
Dimensions	4
Speed, Capacities and Weight	4
Accommodations	5
Hull and Deck Information	5
Engine Information	5
GALLERY	6
DETAILED DESCRIPTION	12
CONTACTS	14

OVERVIEW

Poised in Malaysia and expressing the grand tradition of pedigree motor yachts, this 2004 mega yacht stretches an impressive 289 feet in length with a commanding 69-foot beam, her steel construction and full-displacement hull by Ian Mitchell delivering unwavering poise and bluewater comfort. The expansive volume is curated with timeless elegance by interior designer Anne Chang, whose serene, refined aesthetic sets the stage for effortless living and entertaining. Vast salons flow into sweeping outdoor lounges, while multiple guest suites are complemented by ample ensuite facilities, ensuring privacy and comfort for an extended party. Every space is conceived for gracious cruising—inviting by day, luminous and intimate by night—perfectly suiting the stature expected of the world’s finest mega yachts.

Underway, twin Caterpillar inboard diesel engines deliver confident, quiet power, harmonizing an economical 12-knot cruising speed with a reassuring 15-knot sprint. The yacht’s impressive endurance is underscored by approximately 67,813 gallons of fuel capacity and 26,312 gallons of fresh water, pairing long-range capability with the seakeeping assurance of a steel hull and deck. Thoughtful engineering, redundancy, and global serviceability elevate her as a serious ocean traveler, while her measured draft enhances access to favored anchorages. For connoisseurs seeking a substantial steel yachts pedigree—an elegant, long-legged motor yacht that marries presence with purpose—this distinguished 2004 full-displacement mega yacht is a compelling opportunity to cruise the world in consummate style.

SPECIFICATIONS

Basic Information

Model Year:
2004

Country:
Malaysia

Year Built:
2004

Dimensions

LOA:
289' 0" (88.15 m)

Beam:
69' 0" (21.20 m)

Min Draft:
11' 6" (3.50 m)

Speed, Capacities and Weight

Cruise Speed:
12 Knots (13.81 MPH)

Water Capacity:
26311.54 Gallons

Max Speed:
15 Knots (17.26 MPH)

Fuel Capacity:
67812.97 Gallons

Gross Tonnage:
2385 Pounds

Accommodations

Total Heads:

10

Hull and Deck Information

Hull Material:

Steel Yachts

Hull Designer:

Ian Mitchell

Deck Material:

Steel

Interior Designer:

Anne Chang

Hull Configuration:

Full Displacement

Engine Information

Engines:

2

Engine Type:

Inboard

Manufacturer:

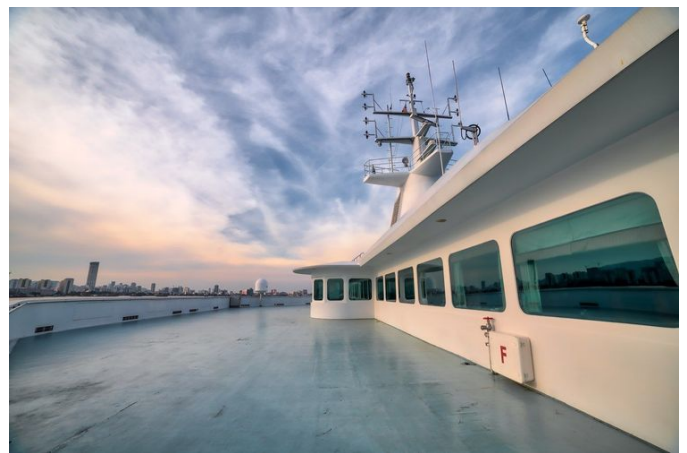
Caterpillar

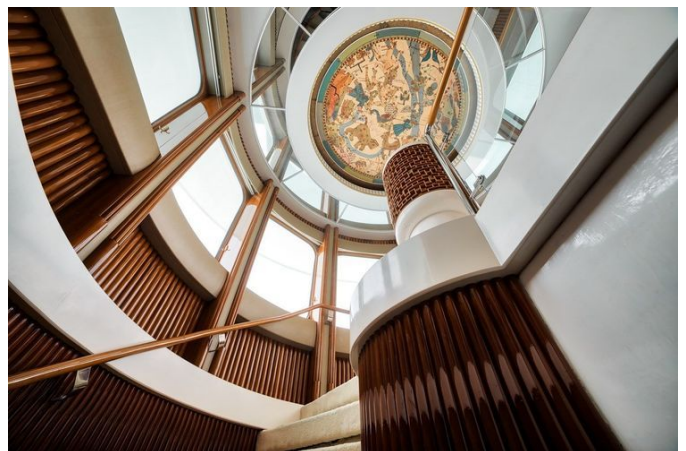
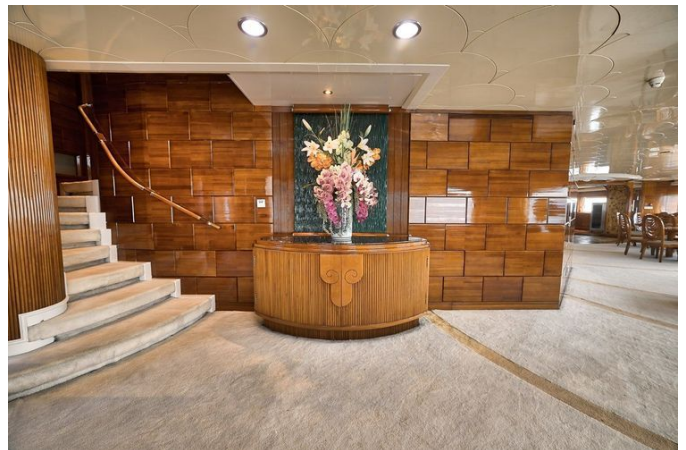
Fuel Type:

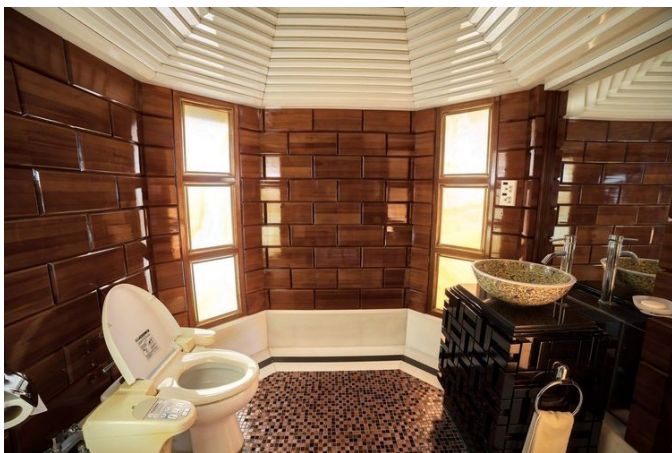
Diesel

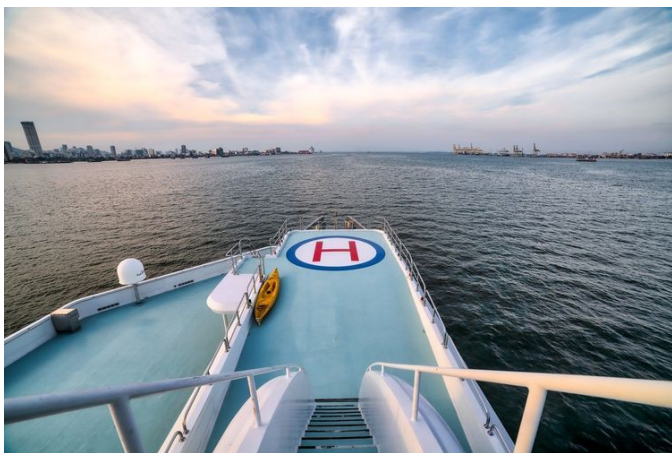
GALLERY













DETAILED DESCRIPTION

Boat highlights

Motor yacht ASEAN LADY is an 88 m, 289-foot steel luxury yacht crafted by Raffles Yachts Yantai and designed by Ian Mitchell. She welcomes 18 guests in eight spacious staterooms, crowned by a master suite measuring 160 square meters with its own private balcony and dedicated office. Purpose-built for entertainment in tropical climes, she offers expansive indoor areas that deliver generous gathering spaces and exceptional privacy in a splendid setting.

Defined by extraordinary volume, ASEAN LADY is equally distinguished by her Proa-inspired form—echoing the bamboo outrigger canoe revered for its stability and long-range capability by the indigenous people of the South Pacific. This distinctive design elegantly resolves challenges that often trouble luxury yachts, including interior space, noise, stability at anchor and while cruising, and the ability to incorporate large windows.

Propulsion is by a single 2000 hp engine driving a Counter Rotating Propeller (CRP) Azimuth Drive, delivering a top speed of 15 knots, while a 600 hp Retractable Thruster can propel the yacht at 7 knots. Working in concert, the forward and aft drives allow her to maneuver sideways, making berthing effortlessly precise. Her stability was emphatically proven in December 2004 when she survived the tsunami while anchored off Phuket, and in 2005 she was honored as the most innovative motor yacht by Showboats International.

Engine & mechanical

Power comes from one Caterpillar main engine rated at 2,000 HP, with 11,454 engine hours recorded as of 7th January 2025, and a complete overhaul carried out in December 2019 to ensure enduring reliability and performance.

Primary propulsion is delivered by an AZIMUTH Thruster, complemented by a retractable AZIMUTH bow thruster rated at 600 HP with ninety-seven hours of use for precise maneuvering. Generator hours as of 7th January 2025 indicate the STBD genset service meter at 1,759 hours (AFT Overhaul) and the port genset service meter at 1,684 hours (AFT Overhaul). Genset output on both sides is 415 volt, three phase, 50 Hz at 1,500 RPM, producing 375 kVA, 300 kW and 522 amps.

ABS certification

Following a comprehensive five-year ABS survey and haul-out completed in mid-2024, Asean Lady emerged with all rectifications finalized, including a complete paint job on the hull and superstructure. Her new ABS Class Certificate is valid until January 2029, and her teak decking is currently being renewed, with the primary focus on the Main Aft Deck.

CONTACTS

Shestakov Yacht Sales is a brokerage company specializing in the sale and service of yachts worldwide. The company offers services for buying and selling both new and used motor yachts, sailing vessels, and luxury superyachts. They also provide yacht registration, insurance, technical maintenance, crew selection, and charter organization services across the U.S., Canada, Latin America, the Caribbean, and the Bahamas.

The founder and lead broker of the company is Andrey Shestakov, a licensed and certified expert with extensive experience in marine engineering and shipbuilding.

The company has an extensive network of partnerships with major yacht manufacturers worldwide and provides services in multiple languages, including Russian, Ukrainian, Spanish, and English. The office is in Dania Beach, Florida, USA.

For more information and to view available yachts, you can visit the company's official website: <https://shestakovyachtsales.com>

Contact details

Phone: +1(954)274-4435

Email: andrey@shestakovyachtsales.com

Address



1380 Weeping Willow Way, Hollywood,
Florida 33019