



SHESTAKOV

Yacht Sales

JOY RIDE - BERTRAM YACHT



Builder: [Bertram Yacht](#)

Beam: 11' 0" (3.40 m)

Year Built: 1962

Max Draft: 9' 0" (2.75 m)

Model: 31 Express Cruiser

Price: \$595,000 USD Subject to change.

[See full listing on our website](#)

Location: Hobe Sound, United States

LOA: 31' 0" (9.45 m)

If you would like to buy a yacht **JOY RIDE - BERTRAM YACHT** or would like help answering any questions concerning purchasing, selling, or chartering a yacht, please call **+1(954)274-4435** or click here on <https://shestakovyachtsales.com>

TABLE OF CONTENTS

OVERVIEW	3
SPECIFICATIONS	4
Basic Information	4
Dimensions	4
Speed, Capacities and Weight	4
Hull and Deck Information	5
Engine Information	5
GALLERY	6
DETAILED DESCRIPTION	16
CONTACTS	20

OVERVIEW

JOY RIDE is an iconic Bertram 31' express cruiser and sportfisher that received a comprehensive stem to stern rebuild in Stuart, Florida, carried out through 2025 into 2026, and, with the exception of the hull structure, virtually every system and component was replaced and finished as new. Propulsion is provided by bracket mounted twin Yamaha outboards, each rated at 350 hp and tied into digital electric steering, complemented by a Seakeeper DC gyro stabilizer for exceptional onboard comfort. Fuel capacity has been renewed and increased to 400 gallons, electronics and navigation are handled by Garmin, and the helm area features custom Blue Water teak for both the helm and companion seats. Electrical and comfort systems include a 110V inverter and 12V cabin air conditioning, while a bespoke hardtop with weather enclosure provides protected deck space. Additional outfitting comprises a bow thruster, windlass, transom livewell and a refrigerated drink box—virtually all of which remain unused. The engines carry five years of warranty, and the meticulous refit was executed by a retired boatbuilder renowned for multiple 31' Bertram restorations. Photographs only hint at the standard of work; private inspections are invited.

SPECIFICATIONS

Basic Information

Model Year:
1962

Country:
United States

Year Built:
1962

Dimensions

LOA:
31' 0" (9.45 m)

Max Draft:
9' 0" (2.75 m)

Beam:
11' 0" (3.40 m)

Speed, Capacities and Weight

Water Capacity:
120 Gallons

Fuel Capacity:
400 Gallons

Hull and Deck Information

Hull Material:

Fiberglass and Plastic Yachts

Hull Designer:

N/A

Deck Material:

Fiberglass

Interior Designer:

N/A

Hull Configuration:

Deep Vee

Engine Information

Engines:

2

Engine Type:

Outboard

Manufacturer:

Yamaha

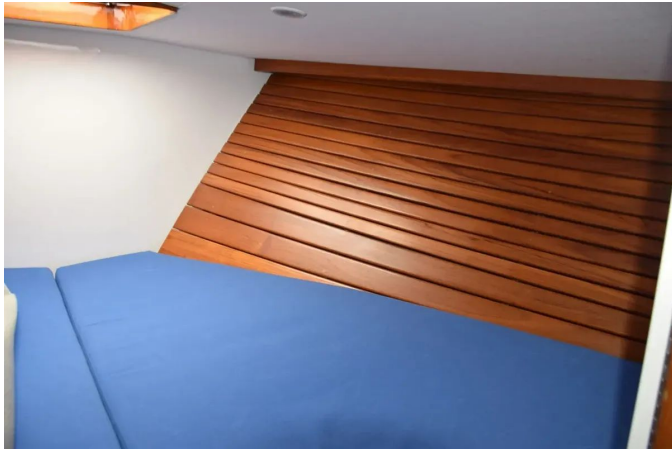
Fuel Type:

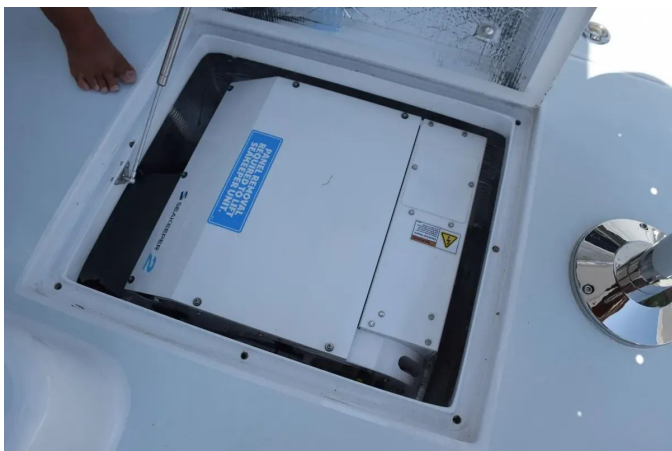
Gas/Petrol

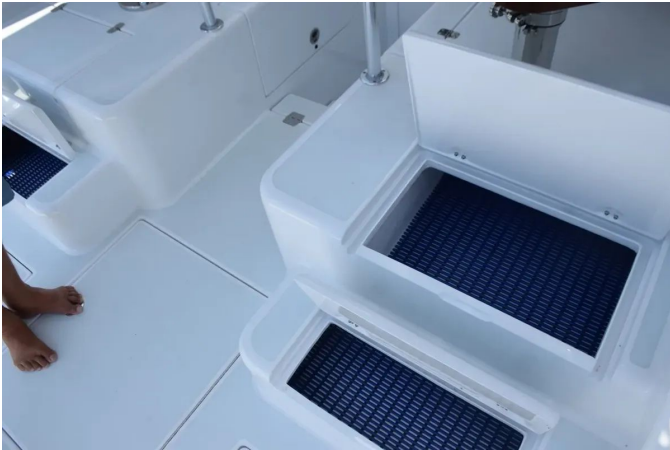
GALLERY







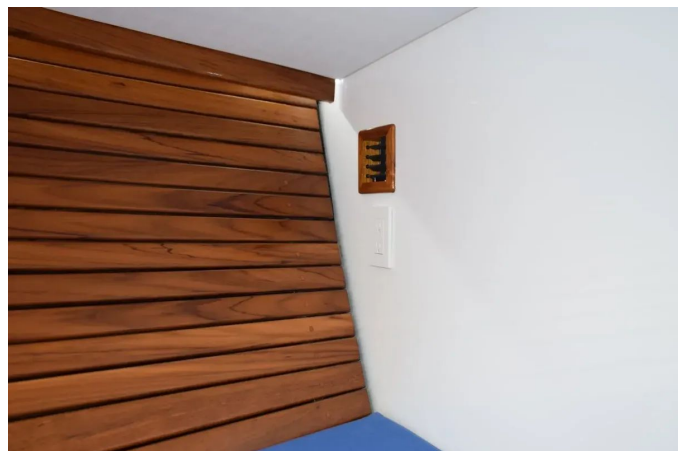
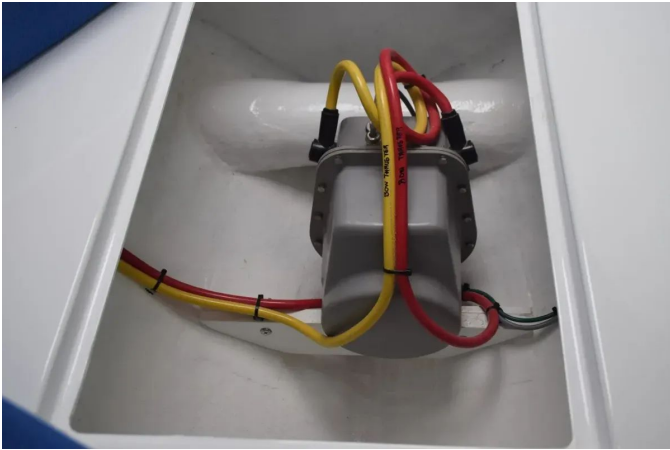
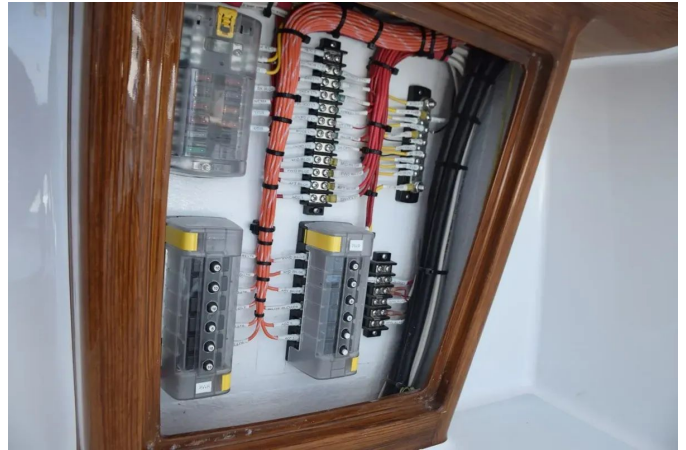














DETAILED DESCRIPTION

General overview

This Bertram 31' Express Cruiser underwent a full, ground-up rebuild in Stuart, Florida from 2025 to 2026, with the original hull structure retained as the only remaining original element and the remainder effectively renewed. JOY RIDE is propelled by twin 350hp Yamaha outboards fitted with bracket-mounted digital electric steering and is stabilized by a Seakeeper DC-powered gyro. New fuel tanks give a total capacity of 400 gallons, and Garmin electronics handle navigation and onboard systems. The helm and companion seats are custom Blue Water teak, while an inverter supplies 110V appliances and 12V cabin air-conditioning provides interior comfort. A custom hardtop with weather enclosure, together with a bow thruster, windlass, transom live well and refrigerated drink box, rounds out a specification in which almost everything is unused. The outboards carry five years of warranty, and the refit was carried out by a retired boat builder who has completed numerous 31' Bertram refits. Photographs tell only part of the story; personal inspections are available.

Features

Every piece of equipment aboard is new for 2025–2026, thoughtfully selected to enhance performance, comfort and serious offshore capability. Stabilization and handling are exemplary thanks to a Seakeeper 2 gyro stabilizer with a dedicated display at the helm, paired with the Seakeeper Ride auto adjusting trim tab system and a Vetus bow thruster for precise maneuvering. The silhouette is refined by a custom fiberglass hardtop with aluminum supports by High Seas and an aluminum bow rail also by High Seas, while Rupp Z 90 Top Gun radial outriggers fitted with painted white carbon fiber poles and an Armstrong transom bracket with swim ladder announce the boat's tournament

readiness. The helm is sheltered by a G&G Canvas polycarbonate three sided bridge enclosure with opening top vents and a center U zip, inside of which sit two custom sized teak Blue Water helm chairs with footrests, fold up bolsters and armrests, accompanied by a Blue Water teak rocket launcher with four rod holders, two drink holders, a rigging tray/drawer and a fitted cover. A faux teak helm console and toe rail, aluminum safety railings inboard of the helm seats, an Edson polished stainless helm wheel with speed knob, and Bocatech switches for exterior equipment complete the refined command center.

Anchoring and fishability are executed with premium hardware: a Maxwell electric windlass with helm remote control and foredeck foot switches feeds through a stainless steel anchor chute to an Ultra stainless anchor with chain lead and nylon rode, all stowed in a top opening anchor locker that drains overboard. Anglers will appreciate the 40 gallon transom live bait well with a clear locking lid, two insulated under deck fish boxes approximately five feet each equipped with fish box macerators, and two Lumitec SeaBlaze underwater LED lights. Cold storage includes a 12V Gulfstream Marine refrigerator drink box that can be set to freezer, and an auto raise/lower VHF antenna makes communications deployment effortless.

The electronic suite centers on Garmin, with twin 10 inch MFD displays integrating GPS, chartplotter, depth and radar, supported by a Garmin 12 kW open array radar with a four foot scanner, a B275LHW transducer, and autopilot functionality incorporated within the Yamaha Digital Electric Steering (DES). Communication and entertainment systems include a Standard Horizon VHF radio, a Fusion MS RA60 Stereo with Bluetooth, and JL Audio speakers—two on the helm deck and two inside the cabin—ensuring clarity underway and at rest.

Electrical systems are built for reliability and autonomy, anchored by a Victron Energy MultiPlus inverter with a digital control panel located in the cabin and a Victron Energy Phoenix smart battery charger, fed from a 30 amp shore

power inlet with shore cord. Battery capacity consists of four Odyssey House Batteries (AGM 470 FTT) and two Odyssey Start Batteries (AGM 31) wired with a parallel switch, managed through Blue Sea battery switches and relays and a Blue Sea electrical circuit breaker panel with battery condition and voltage meters, plus three USB charging ports. Climate control and lighting are sumptuous, with a Mabru 12,000 BTU 12V air conditioning unit ducted into the berth area and head, Lumitec LED lighting including a multi color option under the hardtop, and LED cockpit spreader lights molded into the aft hardtop.

Interior conveniences are tailored for comfort and practicality: an electric freshwater head, polished stainless steel sinks and faucets, a Toshiba microwave oven that operates through the inverter when away from shore power, a hot water heater powered via inverter, 110V outlets, a berth with filler cushion, two cedar lined hanging lockers adjacent to the berth, and a Kidde smoke/CO2 detector. The deck and cockpit are optimized for angling and clean up with a saltwater washdown spigot in the cockpit complete with hose and nozzle, a freshwater washdown spigot, six flush mount rod holders in the cockpit, two clear out rod holders on each rear hardtop support, electric reel plug outlets, side cockpit storage cabinets, a cockpit flag mast, and a canvas cockpit shade with stand poles that insert into the rod holders.

Finishing touches reflect thoughtful durability and style: all Gemlux stainless hardware with pop up cleats and hawsers, two Ultra Safety float switches and a high water alarm, two Rule 2000 gph bilge pumps, a freshwater auto flush system for the outboards, and blue Sunbrella canvas covers for the helm chairs, helm pod and engines.

Hull and deck

The Ice Blue hull, set off by a deep dark-blue bottom coat, presents a commanding and sophisticated profile, accentuated by a white rub rail finished

with a solid polished stainless steel strike insert. The outboards are Yamaha white units fitted with bespoke, hull-matching top cowlings, while the topsides are rendered in Cloud White and edged by practical non-skid decking. At the helm, custom blue-and-white cushions with matching armrest pads elevate both comfort and visual harmony. The cockpit layout is engineered for effective water management, with hose drains integrated into every hatch gutter and chrome drain grills protecting the corner scuppers. Below decks, the cabin is appointed with a Teak & Holly sole, varnished teak trim and teak hull cladding around the berth; the berth itself includes a filler cushion with convenient storage underneath. The settee provides additional stowage beneath the bench and concealed space behind the backrest, and a rectangular varnished teak table with a spill edge and two drink holders centers the seating area. Dark-tinted cabin windows complete the refined and highly functional interior environment.

Custom disclaimer and exclusions

The Company provides the particulars of this vessel in good faith but does not guarantee or warrant the accuracy of that information or the vessel's condition. Prospective purchasers are encouraged to engage their own agents or surveyors to confirm any details they wish to have independently verified. This yacht is offered subject to prior sale, changes in price, or withdrawal without notice. Certain personal effects currently aboard may be excluded from the sale; a concise list of such exclusions will be provided on request when accompanied by a written offer.

CONTACTS

Shestakov Yacht Sales is a brokerage company specializing in the sale and service of yachts worldwide. The company offers services for buying and selling both new and used motor yachts, sailing vessels, and luxury superyachts. They also provide yacht registration, insurance, technical maintenance, crew selection, and charter organization services across the U.S., Canada, Latin America, the Caribbean, and the Bahamas.

The founder and lead broker of the company is Andrey Shestakov, a licensed and certified expert with extensive experience in marine engineering and shipbuilding.

The company has an extensive network of partnerships with major yacht manufacturers worldwide and provides services in multiple languages, including Russian, Ukrainian, Spanish, and English. The office is in Dania Beach, Florida, USA.

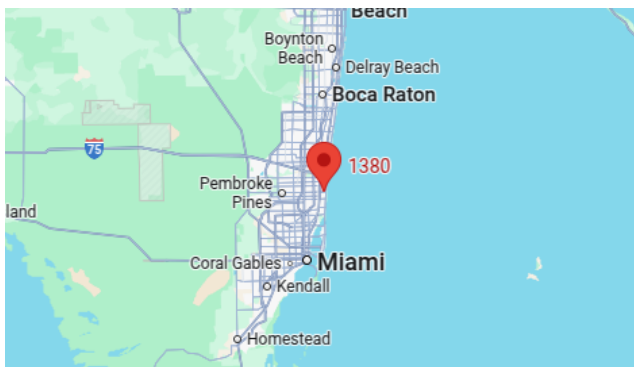
For more information and to view available yachts, you can visit the company's official website: <https://shestakovyachtsales.com>

Contact details

Phone: +1(954)274-4435

Email: andrey@shestakovyachtsales.com

Address



1380 Weeping Willow Way, Hollywood,
Florida 33019