



GRAY AREA - CHAPARRAL

**Builder:**

[Chaparral](#)

Year Built:

2018

Model:

Signature

Price:

[See on website](#)

Location:

Prospect, United States

Max Speed:

0 Knots (0 MPH)

LOA:

31' 0" (9.45 mm)

Beam:

10' 0" (3.23 mm)

Min Draft:

6' 7" (2 mm)

Max Draft:

- (0 mm)

Cruising Speed:

0 Knots (0 MPH)

If you would like to buy a yacht **GRAY AREA - CHAPARRAL** or would like help answering any questions concerning purchasing, selling, or chartering a yacht, please call **+1(954)274-4435** or click here on <https://shestakovyachtsales.com>

TABLE OF CONTENTS

Overview 5

Specifications 6

 Basic Information 6

 Dimensions 6

 Speed, Capacities and Weight 6

 Accommodations 7

 Hull and Deck Information 7

Gallery 8

Contacts 16

OVERVIEW

2021 SURVEY AVAILABLE FOR SERIOUS INQUIRIES UPON REQUEST

The Chaparral 310 is a remarkable vessel crafted with the innovative Wide Tech hull, a hallmark of the brand's cruiser lineup ranging from 21 to 42 feet. This yacht features a sleek, raked bow, complemented by additional moldings above the waterline, which enhances the pickle-fork design at deck level, broadening the cabin space. The unique bow shape is subtly noticeable from certain angles, while the overall silhouette exudes a modern elegance that is both attractive and well-proportioned.

Among its standout features is the Extended V-Plane Hull, which provides an impressive half-meter of surface area on either side of the propeller, facilitating a more efficient transition onto the plane.

Inside, the cabin serves as a spacious entertainment area during inclement weather and comfortably accommodates two couples. The upper deck seating can be transformed for relaxation or stylish cruising. The Signature series boasts standard amenities such as a hardtop, wet bar, convertible seating, and a swim platform, which are often considered optional on competing models.

SPORT CRUISER

This mid-range sport cruiser is widely regarded as an exceptional day boat and entertainer. However, the owners of this 310 recognized its potential as a coastal cruiser, embarking on an extended journey from Brisbane to the Whitsundays and back over several months.

The full-width boarding platform measures 0.75m and features a removable stainless steel safety rail at the center, allowing for unobstructed access on either side. A recessed swim ladder is integrated into the starboard platform, and a rear-facing seat on the transom provides a delightful spot to unwind. This seat effortlessly converts into a sun pad over the engine compartment with a simple switch, revealing a substantial storage locker for water toys,

fenders, and lines.

COCKPIT

A small step leads up to the cockpit deck, where I discovered front and rear-facing lounges to starboard, creating a spacious area that can be transformed into a dinette with the addition of a table affixed to the side deck. Ample storage is available beneath each lounge, and a step leads to the non-slip gunwale for easy boarding.

Unlike many sport cruisers that feature a lengthwise bench along the port side—which can be an awkward seating arrangement underway—the 310's layout includes a wet bar and server in this area, along with a twin seat adjacent to the helm. This design promotes easy movement around the yacht while maximizing forward-facing seating for guests. The granite-look countertops extend along the server, featuring openings for a sink and rubbish bin, along with generous storage and a 23-liter carry-on icebox below.

CABIN

Three steps descend from the cockpit through a sliding door into the cabin. The wide timber steps harmonize with the teak flooring and dark cabinetry, enhancing the luxurious feel created by the rich cream leather upholstery. The advantages of the Wide Tech hull are most apparent in the cabin, which offers an impressive sense of space for a 31-footer. Up to eight guests can comfortably gather around the deep-gloss mahogany dining table situated in the lounge that wraps around the cabin behind the bed.

To port, a sleek galley features a granite countertop, stainless steel sink with mixer, 240V cooktop, compact microwave, and a 12/240V Isotherm fridge. The appliances can operate on shore power or two house batteries connected to an inverter. Opening ports above the galley and to starboard, along with a hatch in the ceiling, ensure excellent airflow, while the generous 1.9m headroom enhances the spacious ambiance of the cabin.

Explore the additional tabs at the bottom of the listing for more details on

propulsion, specifications, features, and more.

2018

Low hours

Chaparral

Signature

310

Freshwater

Volvo Penta

Current boat location: Kentucky

SPECIFICATIONS

Basic Information

Category:
Motor yachts

Sub category:
Cruisers

Model Year:
2018

Year Built:
2018

Country:
United States

Dimensions

LOA:
31' 0" (9.45 mm)

Min Draft:
6' 7" (2 mm)

Beam:
10

Max Draft:
- (0 mm)

Speed, Capacities and Weight

Cruise Speed:
0 Knots (0 MPH)

Cruise Speed Range:
0 Kts.

Max Speed:
0 Knots (0 MPH)

Max Speed Range:
0 Kts.

Gross Tonnage:
0 Pounds

Water Capacity:
40 Gallons.

Holding Tank:
0 Gallons

Fuel Capacity:
118 Gallons

Accommodations

Total Cabins:

—

Total Berths:

—

Sleeps:

0

Total Heads:

0

Crew Cabin:

0

Crew Berths:

0

Crew Heads:

—

Hull and Deck Information

Hull Material:

Fiberglass and Plastic Yachts

Deck Material:

Fiberglass

Hull Configuration:

N/A

Hull Designer:

N/A

Interior Designer:

N/A

Engine Information

Engines:

2

Manufacturer:

Volvo Penta

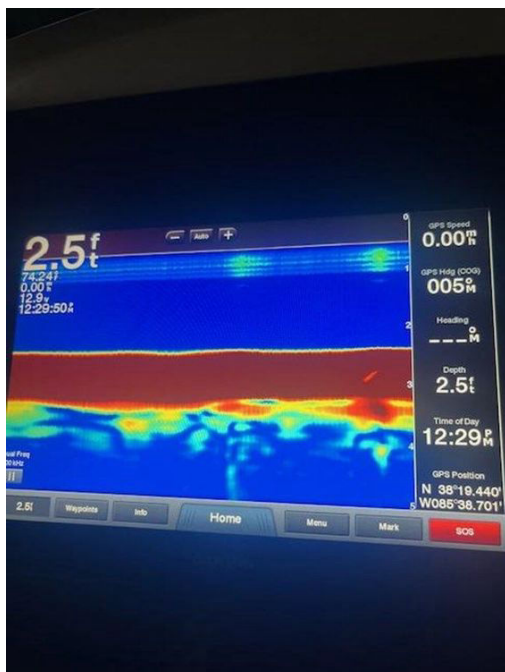
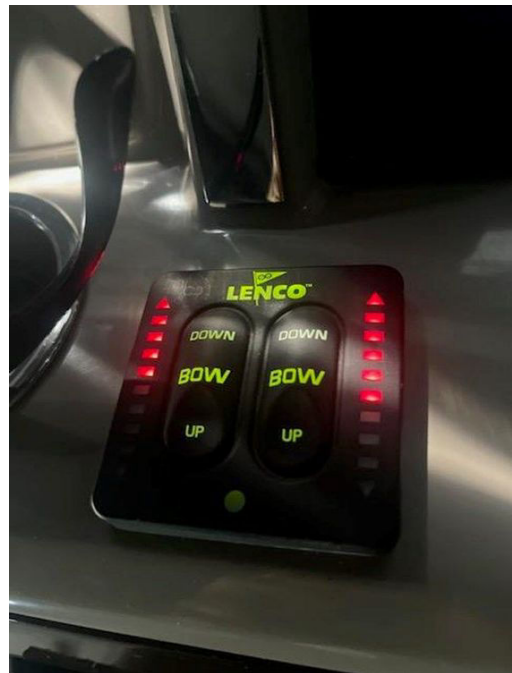
Engine Type:

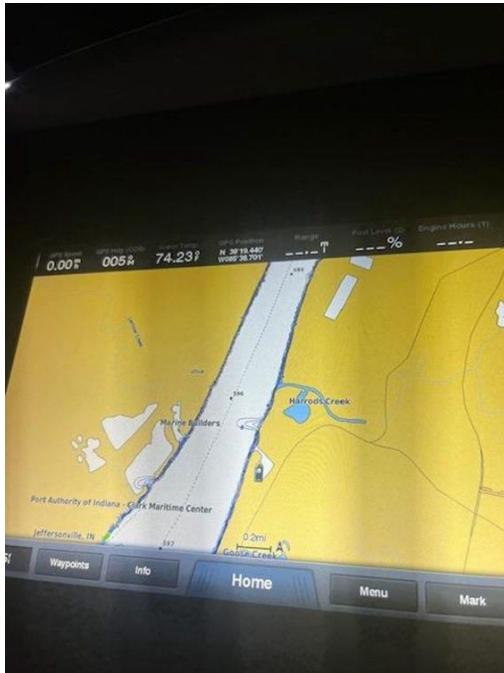
Inboard

Fuel Type:

Gas/Petrol

GALLERY



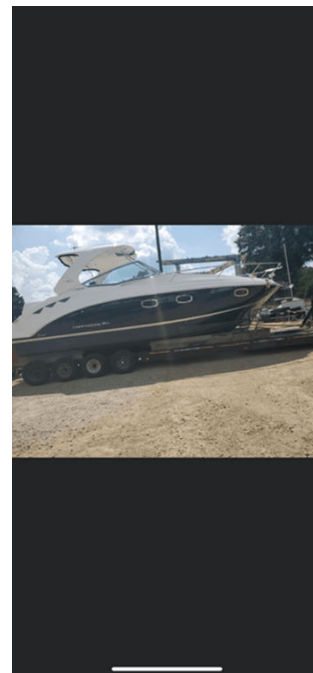














CONTACTS

Shestakov Yacht Sales is a brokerage company specializing in the sale and service of yachts worldwide. The company offers services for buying and selling both new and used motor yachts, sailing vessels, and luxury superyachts. They also provide yacht registration, insurance, technical maintenance, crew selection, and charter organization services across the U.S., Canada, Latin America, the Caribbean, and the Bahamas.

The founder and lead broker of the company is Andrey Shestakov, a licensed and certified expert with extensive experience in marine engineering and shipbuilding.

The company has an extensive network of partnerships with major yacht manufacturers worldwide and provides services in multiple languages, including Russian, Ukrainian, Spanish, and English. The office is in Dania Beach, Florida, USA.

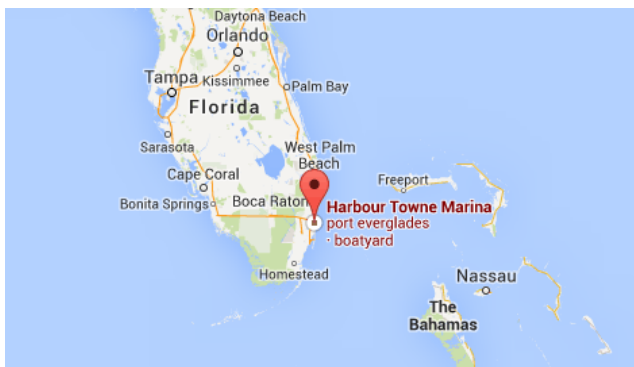
For more information and to view available yachts, you can visit the company's official website: <https://shestakovyachtsales.com>

Contact details

Phone: +1(954)274-4435

Email: andrey@shestakovyachtsales.com

Address



Harbour Towne Marina, 850 NE 3rd St,
STE 213,
Dania, FL 33004