



SEAGLASS - MAINSHIP



Builder: [MAINSHIP](#)

Beam: 14' 0" (4.32 m)

Year Built: 1999

Max Draft: 12' 0" (3.67 m)

Model: 350 Trawler

Price: \$139,000 USD Subject to change.

[See full listing on our website](#)

Location: LaBelle, United States

LOA: 35' 0" (10.67 m)

If you would like to buy a yacht **SEAGLASS - MAINSHIP** or would like help answering any questions concerning purchasing, selling, or chartering a yacht, please call **+1(954)274-4435** or click here on <https://shestakovyachtsales.com>

TABLE OF CONTENTS

OVERVIEW 3

SPECIFICATIONS 5

 Basic Information 5

 Dimensions 5

 Speed, Capacities and Weight 5

 Hull and Deck Information 6

 Engine Information 6

GALLERY 7

DETAILED DESCRIPTION 19

CONTACTS 23

OVERVIEW

1999 Mainship 350 Trawler — Seaglass

The 1999 Mainship 350 Trawler Seaglass is a much-admired single engine cruising trawler that marries economical reliability with understated refinement for effortless voyaging. Propelled by a stout 300hp Caterpillar 3116, she delivers steady, frugal performance, while a Kohler 8 kW generator with 1,215 hours aboard supports extended stays at anchor. Practical mechanical amenities—an Oil X Change R system and a Racor fuel polishing arrangement—speak to her readiness for long passages and a go-anywhere spirit.

Designed with Great Loop aspirations, coastal exploration, or comfortable liveaboard life in mind, Seaglass wraps guests in climate-controlled comfort via dual zone reverse cycle air conditioning rated at 16k and 12k BTU. The salon welcomes you with rich cherry joinery and tastefully renewed furniture (updated 2022), and the galley is appointed with durable Corian countertops and the storage expected of a true motor yacht. Sleeping arrangements include a private owner's stateroom with an island berth, plus a guest cabin with twin berths and a separate enclosed shower—an ideal layout for a cruising couple hosting family or friends.

A fully sheltered flybridge, protected by a Stamoid Bimini and a complete Strataglass enclosure installed in 2020, provides an all weather command station. Handling is made simple by a Side Power 4 HP bow thruster, a windlass with dual anchors, and the convenience of both upper and lower helm stations. Electronics have been modernized with a Raymarine Axiom RV9 touchscreen paired with Quantum radar and a VHF fitted with a RAM mic, ensuring confident navigation whether on passages or in tight harbors.

Well equipped, carefully maintained, and appointed with desirable factory options, Seaglass represents exceptional value in the 35 foot cruising trawler

category. For those seeking a refined trawler yacht—part liveaboard cruiser, part coastal passagemaker, part economical diesel powerboat—this capable Mainship classic is a prime Great Loop candidate.

SPECIFICATIONS

Basic Information

Category:
Motor yachts

Year Built:
1999

Sub category:
Trawler

Country:
United States

Model Year:
1999

Dimensions

LOA:
35' 0" (10.67 m)

Max Draft:
12' 0" (3.67 m)

Beam:
14' 0" (4.32 m)

Speed, Capacities and Weight

Water Capacity:
130 Gallons

Fuel Capacity:
300 Gallons

Hull and Deck Information

Hull Material:

Fiberglass and Plastic Yachts

Hull Designer:

N/A

Deck Material:

Fiberglass

Interior Designer:

N/A

Hull Configuration:

Monohull

Engine Information

Engines:

1

Engine Type:

Inboard

Manufacturer:

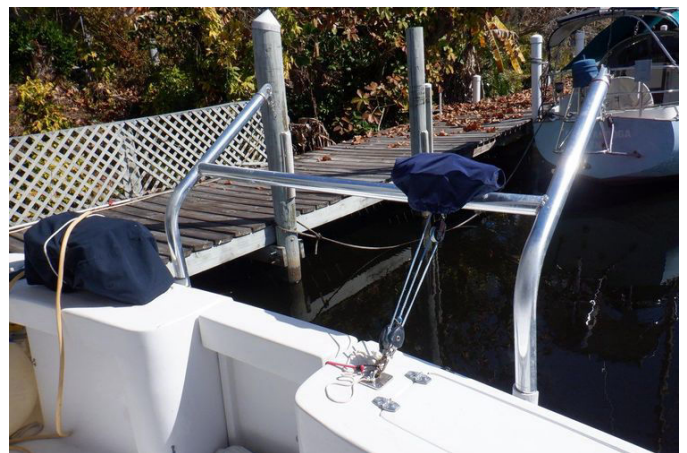
Caterpillar

Fuel Type:

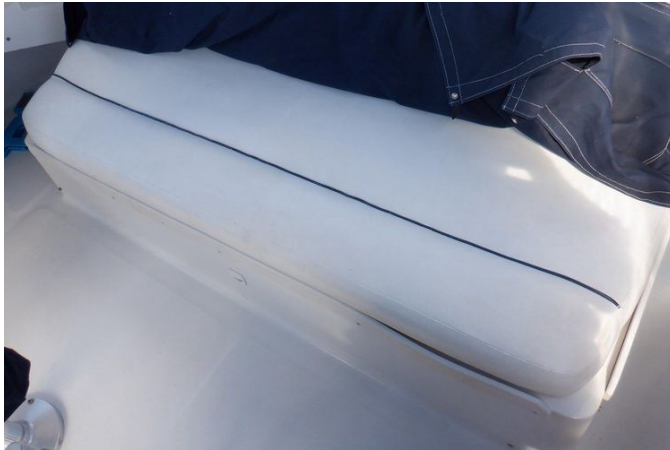
Diesel

GALLERY











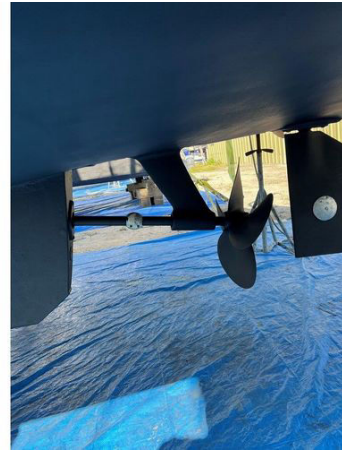
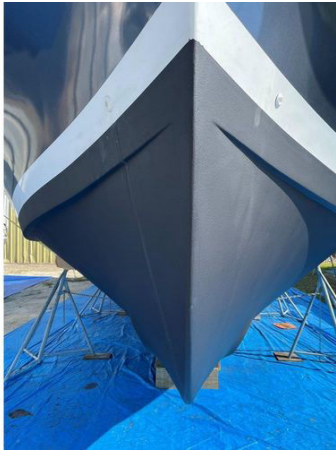














DETAILED DESCRIPTION

Factory installed options

Delivered with purposeful capability, this yacht arrives equipped for comfortable, confident cruising: dual-zone air conditioning with reverse-cycle heat ensures year-round climate control, and a Kohler 8 kW diesel generator showing 1,215 hours provides dependable power at anchor. A remotely controlled spotlight offers precise night maneuvering, a reliable windlass handles ground tackle with ease, and an Oil X-Change-R system makes clean, efficient engine oil service a simple onboard task.

Accommodations

The salon welcomes you with a 16,000 BTU air conditioning system and a warm cherry interior, where a color television wired for cable, a flat screen TV, and a stereo system with CD create a refined entertainment environment. New salon furniture—chairs and table added in 2022—sits beneath LED lighting and comprehensive interior illumination, all framed by a full windshield with wipers, a large sliding door to the cockpit with screen, an opening center window, and sliding windows with screens for light and ventilation. The lower station presents full instrumentation for command in any weather, while Phifertex salon window covers with heat barrier panels control solar gain with elegant efficiency. The galley elevates culinary ease with Corian counters, a portable Frigidaire ice maker from 2021, and a designer faucet fitted in 2022, paired with a full-size NovaKool refrigerator/freezer on AC/DC power, an oversize sink with cutting board, ample overhead cabinets and under-counter storage, a Princess three-burner range with oven, microwave, and LED task lighting to complete a practical yet refined cooking space. The master stateroom centers on a generous island bed with an inner spring mattress and

its own 12,000 BTU air conditioning system, flanked by two cedar-lined wardrobe lockers and drawers under the berth, illuminated by LED lights and high-intensity reading lamps, and fitted with a mirror, opening hatch with sunshade, opening screened stainless steel portlights, and a gas shock on the storage locker beneath the mattresses for easy access. The guest stateroom offers two single berths with high-density foam mattresses, a wardrobe locker, two high-intensity reading lights, an opening hatch with sunshade, an opening screened stainless steel portlight, and storage drawers for comfortable privacy. The head is fully molded fiberglass for durability and easy cleaning, featuring a built-in vanity, electric head, mirror, opening hatch with sunshade, opening screened stainless steel portlight, a separate enclosed shower, and a waste tank monitor to keep systems shipshape.

Electronics

A Raymarine Quantum Q24D 24-mile dome radar anchors the suite, and at the upper helm a Raymarine RV9 Axiom touchscreen integrates GPS, charting, depth, fish finder, and radar for unified situational awareness. Side Power bow thruster control and ACR spotlight control put precision at your fingertips while entertainment and communications are handled by a Kenwood stereo with six speakers and a Standard Horizon Explorer marine VHF with GPS, all guided true by a Saturn compass. At the lower helm, a VHF Ram Mic Ram4 with intercom keeps the conversation flowing, mirrored by a second Side Power bow thruster control, an AutoHelm Tridata for depth, speed, and trip information, and a Saturn compass for steady bearings.

Electrical equipment

Power management is robust and well organized, beginning with four batteries offering 500 amp-hour capacity and supported by a 50 amp battery charger,

an AC/DC converter, and 50 amp battery safety switches controlled from AC and DC panels. Shore power arrives via two 50 ft, 30 amp shore power cords with forward and aft connections, protected by a bonding system with transom-mounted zinc anode and circuit breakers for AC and DC, while color-coded wiring harnesses simplify tracing. Three electric bilge pumps with automatic switches provide dependable dewatering, complemented by GFCI protection throughout, interior lighting, a macerator with overboard discharge, a reverse polarity indicator, and a water heater for everyday comfort.

Deck, bridge, and cockpit

Designed for open-air enjoyment and confident handling, the exterior features a Stamoid bimini top with a full Strataglass enclosure installed in 2020, a covered Magna grill in the cockpit, and a cockpit rear drop sun screen canvas to temper bright days. Ground tackle is managed with authority by an anchor pulpit with roller and two SuperMax anchors, supported by a split-compartment anchor locker and a stout Sampson post, while Sunbrella covers protect flybridge seats and instruments and courtesy lights illuminate cockpit, bridge, and deck. A high-density rub rail with stainless steel insert adds protection and polish, dockside convenience is provided by a cable TV/telephone connection, and low-profile custom aluminum bow rails with matching safety rails frame molded steps and a walkway to the bridge. The flybridge seats six plus and includes a folding table for relaxed gatherings, movement aboard is effortless via a molded swim platform with ladder, a sliding companionway door, a freshwater swim platform shower, abundant cockpit storage, and a sleek Venturi windshield to deflect the breeze, with cleats precisely placed—two bow, two spring, and two stern—for secure mooring.

Mechanical

Beneath the waterline and at the helm, mechanical systems are specified for strength and control: bronze strut and rudder, a Side Power bow thruster rated at 4 HP, and three bilge pumps ensure consistent dewatering. Fuel is kept pristine by a Racor 900 FG fuel polishing system with water detector and dedicated fuel filters, the engines benefit from freshwater cooling and an engine alarm system, and a Halon system provides onboard fire suppression. Hydraulic steering paired with trim tabs refines running attitude, sea strainers and seacocks on underwater thru-hull fittings protect vital intakes, an Aquamet stainless steel shaft transmits power with enduring reliability, and welded aluminum fuel tanks complete a robust, serviceable installation built for real-world cruising.

CONTACTS

Shestakov Yacht Sales is a brokerage company specializing in the sale and service of yachts worldwide. The company offers services for buying and selling both new and used motor yachts, sailing vessels, and luxury superyachts. They also provide yacht registration, insurance, technical maintenance, crew selection, and charter organization services across the U.S., Canada, Latin America, the Caribbean, and the Bahamas.

The founder and lead broker of the company is Andrey Shestakov, a licensed and certified expert with extensive experience in marine engineering and shipbuilding.

The company has an extensive network of partnerships with major yacht manufacturers worldwide and provides services in multiple languages, including Russian, Ukrainian, Spanish, and English. The office is in Dania Beach, Florida, USA.

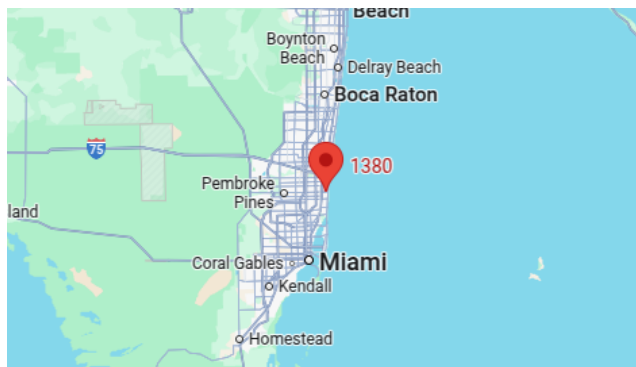
For more information and to view available yachts, you can visit the company's official website: <https://shestakovyachtsales.com>

Contact details

Phone: +1(954)274-4435

Email: andrey@shestakovyachtsales.com

Address



1380 Weeping Willow Way, Hollywood,
Florida 33019