



DANCES WITH WAVES - SILVERTON



Builder: [Silverton](#)

Beam: 13' 0" (3.96 m)

Year Built: 1998

Max Draft: 11' 3" (3.42 m)

Model: 352 Motor Yacht

Price: \$49,900 USD Subject to change.

[See full listing on our website](#)

Location: Little River, United States

LOA: 35' 0" (10.67 m)

If you would like to buy a yacht **DANCES WITH WAVES - SILVERTON** or would like help answering any questions concerning purchasing, selling, or chartering a yacht, please call **+1(954)274-4435** or click here on <https://shestakovyachtsales.com>

TABLE OF CONTENTS

OVERVIEW 3

SPECIFICATIONS 4

 Basic Information 4

 Dimensions 4

 Speed, Capacities and Weight 4

 Accommodations 4

 Hull and Deck Information 5

 Engine Information 5

GALLERY 6

DETAILED DESCRIPTION 18

CONTACTS 20

OVERVIEW

Dances with Waves is an exquisite 1998 Silverton 352 Motor Yacht, ideal for those desiring a lavish liveaboard lifestyle. Boasting two private staterooms, this yacht provides generous space for hosting family and friends. The master suite includes a private head with a stall shower, while the VIP stateroom conveniently shares a forward-located head.

This vessel is powered by twin V8 Crusader 454 engines and features a Kohler 6.5KW generator, ensuring a seamless and comfortable voyage. Experience optimal climate control with dual-zone air conditioning and heating, enhanced by a full enclosure for additional comfort.

Seize the opportunity to own this magnificent yacht available at its current location. Don't let the chance slip by to acquire a yacht that perfectly blends elegance with practicality. Arrange a viewing today to witness the charm of this extraordinary vessel in person.

SPECIFICATIONS

Basic Information

Category:
Motor yachts

Year Built:
1998

Model Year:
1998

Country:
United States

Dimensions

LOA:
35' 0" (10.67 m)

Max Draft:
11' 3" (3.42 m)

Beam:
13' 0" (3.96 m)

Speed, Capacities and Weight

Water Capacity:
94 Gallons

Fuel Capacity:
280 Gallons

Accommodations

Total Heads:
2

Hull and Deck Information

Hull Material:

Fiberglass and Plastic Yachts

Hull Designer:

N/A

Deck Material:

Fiberglass

Interior Designer:

N/A

Hull Configuration:

N/A

Engine Information

Engines:

2

Engine Type:

Inboard

Manufacturer:

Crusader

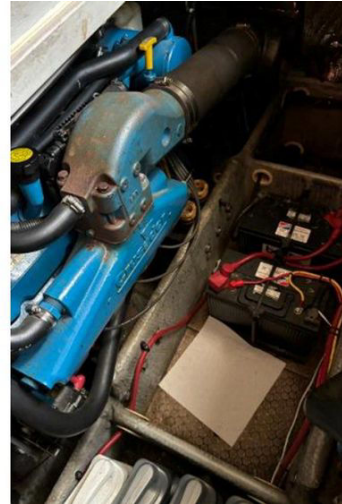
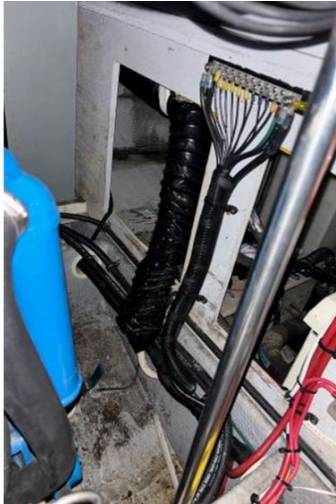
Fuel Type:

Gas/Petrol

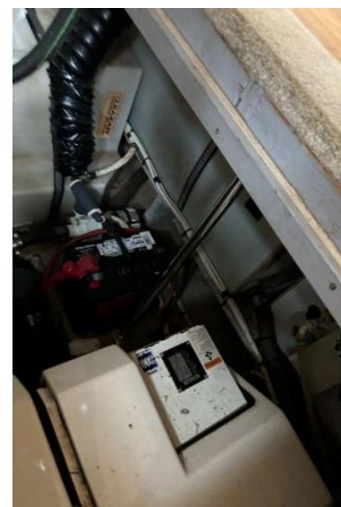
GALLERY

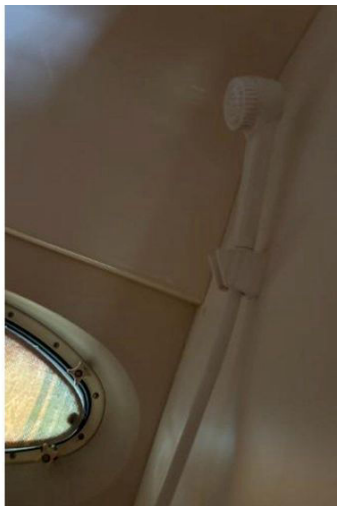


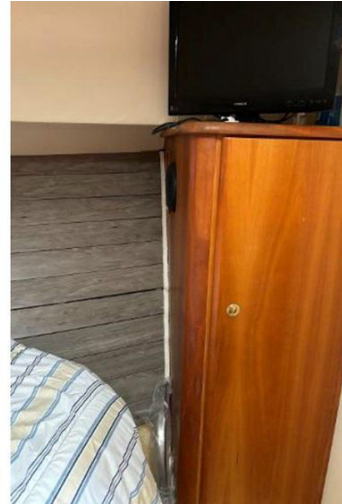


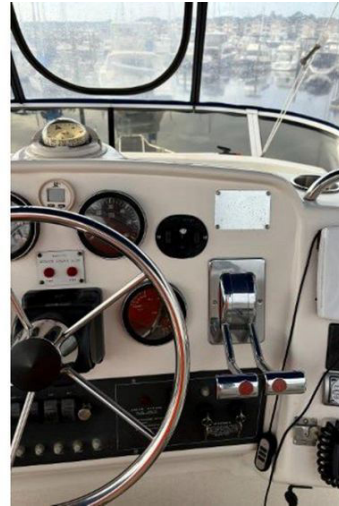


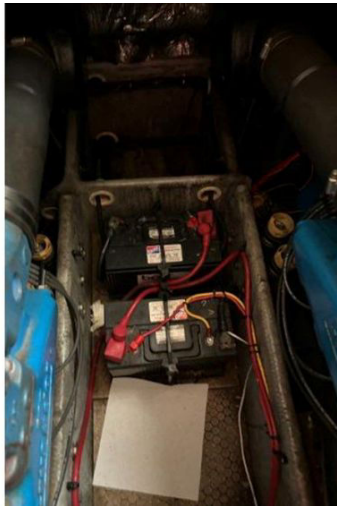




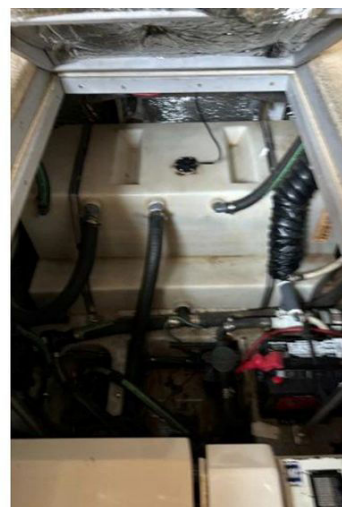
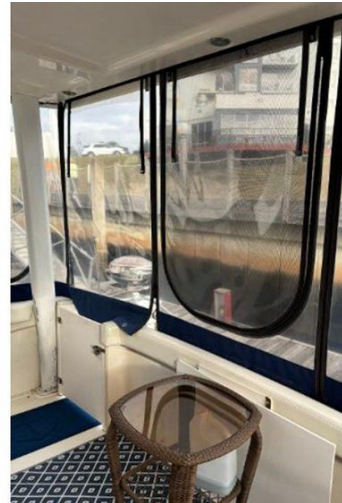


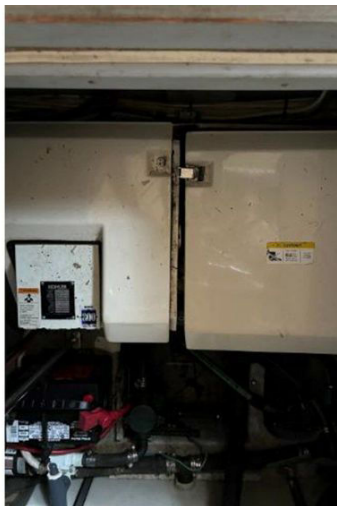












DETAILED DESCRIPTION

Section name

The Silverton 352 Motor Yacht stands as a testament to advanced marine design, featuring the groundbreaking "SideWalk" deck layout that has become synonymous with Silverton's legacy. This unique configuration substitutes conventional side decks with elegantly molded steps that descend smoothly along both sides of the structure. This ingenious setup not only creates a roomy full-beam salon but also facilitates seamless movement from the bridge to the foredeck. The bulky ladders of the past are replaced by broad molded steps and a high toe kick, ensuring both ease and safety. Outfitted with robust oversized stainless steel rails, the yacht guarantees passenger security even in challenging waters. The center console flybridge is crafted to host a large group, making it ideal for social events. Furthermore, the standard aft hardtop adds to the yacht's allure, offering a perfect setting for entertainment and leisure.

Accommodations

The Silverton 352 Motor Yacht is crafted on a sturdy fiberglass modified-V hull, presenting a roomy two-stateroom layout that combines practicality with luxury. This design features a mid-level galley and dinette, with double beds in both staterooms, ensuring ample comfort for long voyages. Impressively, the interior of this 35-foot yacht rivals that of much larger boats, with a salon that is notably spacious. Each of the two bathrooms is fitted with separate stall showers, providing both privacy and convenience. The mid-level galley is expertly arranged with abundant counter space and storage, making cooking effortless. On the aft deck, a wet bar is a standard inclusion, paired with a hardtop that boosts the yacht's adaptability. The flybridge accommodates six,

offering a perfect venue for social gatherings with stunning views. Additional highlights include an elegantly curved staircase from the expansive swim platform to the aft deck, along with a roomy engine room that ensures easy maintenance and access.

Disclaimer

The Company provides the information about this vessel with sincere intentions, but it is crucial to understand that we cannot ensure the accuracy of these details or guarantee the vessel's condition. Potential buyers are advised to have their agents or surveyors meticulously examine any specifics they want confirmed. This vessel is offered for sale with the understanding that it might be sold beforehand, experience price adjustments, or be removed from the market without prior notice.

CONTACTS

Shestakov Yacht Sales is a brokerage company specializing in the sale and service of yachts worldwide. The company offers services for buying and selling both new and used motor yachts, sailing vessels, and luxury superyachts. They also provide yacht registration, insurance, technical maintenance, crew selection, and charter organization services across the U.S., Canada, Latin America, the Caribbean, and the Bahamas.

The founder and lead broker of the company is Andrey Shestakov, a licensed and certified expert with extensive experience in marine engineering and shipbuilding.

The company has an extensive network of partnerships with major yacht manufacturers worldwide and provides services in multiple languages, including Russian, Ukrainian, Spanish, and English. The office is in Dania Beach, Florida, USA.

For more information and to view available yachts, you can visit the company's official website: <https://shestakovyachtsales.com>

Contact details

Phone: +1(954)274-4435

Email: andrey@shestakovyachtsales.com

Address



1380 Weeping Willow Way, Hollywood,
Florida 33019