



BLACK MAGIC - NORDIC TUGS



Builder: [Nordic Tugs](#)

LOA: 37' 0" (11.28 m)

Year Built: 2001

Beam: 12' 0" (3.94 m)

Model: 37 Tug

Min Draft: 14' 3" (4.33 m)

Price: \$278,146.26 USD Subject to change.

Cruising Speed: 10 Knots (11.51 MPH)

[See full listing on our website](#)

Location: Nanaimo, Canada

Max Speed: 17 Knots (19.56 MPH)

If you would like to buy a yacht **BLACK MAGIC - NORDIC TUGS** or would like help answering any questions concerning purchasing, selling, or chartering a yacht, please call **+1(954)274-4435** or click here on <https://shestakovyachtsales.com>

TABLE OF CONTENTS

OVERVIEW 3

SPECIFICATIONS 5

 Basic Information 5

 Dimensions 5

 Speed, Capacities and Weight 5

 Hull and Deck Information 6

 Engine Information 6

GALLERY 7

DETAILED DESCRIPTION 8

CONTACTS 9

OVERVIEW

A finely kept 2001, 37-foot pilothouse cruiser that marries the solid heritage of Nordic Tug design with practical coastal capability, currently berthed on Vancouver Island with moorage available. Poised for weekend getaways or longer coastal seasons, she embodies the qualities Pacific Northwest sailors prize: economical operation, onboard comfort, and dependable seakeeping. Her semi-displacement hull finds an elegant balance between efficiency and reserve, settling into an economical cruise of roughly 10 knots while retaining the ability to push toward approximately 17 knots when the passage requires. Propulsion is provided by a single Cummins inboard diesel, a simple, serviceable powerplant noted for reliability and fuel economy. The robust fiberglass construction and well-considered deck layout encourage secure movement fore and aft; substantial rails and a protected cockpit make line handling straightforward and evenings at anchor pleasantly assured.

Inside, light pours through ample windows into a warm, inviting salon, where sightlines to the surrounding water enhance the cruising experience. The interior plan is arranged for real-world voyaging, with a practical galley suited to preparing proper meals, generous storage for extended time aboard, and a quiet private stateroom accompanied by an enclosed head with shower. The raised pilothouse serves as the vessel's center of command, offering commanding visibility, comfortable companion seating, and a helm ergonomically set up for long, relaxed passages. Attention to systems and sound attenuation preserves easy conversation underway, while ample tankage—approximately 320 gallons of diesel and 144 gallons of fresh water—extends range and supports comfortable off-grid cruising.

Whether drawn to tranquil Gulf Island anchorages, hidden inlets of Desolation Sound, or comfortable liveaboard life, this yacht answers with the assurance of a proven hull form and the straightforward economy of single-diesel

operation. She presents as a well-cared-for vessel throughout, reflecting conscientious ownership and the quiet grace of a boat intended to be used and enjoyed.

Located on Vancouver Island, BC; inspections by appointment. More details and photos coming soon.

Category keywords: Trawler Yacht, Pilothouse, Motor Yacht, Coastal Cruiser, Passagemaker, Liveaboard, Semi-Displacement, Fiberglass, Diesel Cruiser, PNW Cruiser

SPECIFICATIONS

Basic Information

Category:
Motor yachts

Year Built:
2001

Sub category:
Trawler

Country:
Canada

Model Year:
2001

Dimensions

LOA:
37' 0" (11.28 m)

Beam:
12' 0" (3.94 m)

Min Draft:
14' 3" (4.33 m)

Speed, Capacities and Weight

Cruise Speed:
10 Knots (11.51 MPH)

Water Capacity:
144 Gallons

Max Speed:
17 Knots (19.56 MPH)

Fuel Capacity:
320 Gallons

Hull and Deck Information

Hull Material:

Fiberglass and Plastic Yachts

Hull Designer:

Nordic Tug

Deck Material:

Fiberglass

Interior Designer:

N/A

Hull Configuration:

Semi-Displacement

Engine Information

Engines:

1

Engine Type:

Inboard

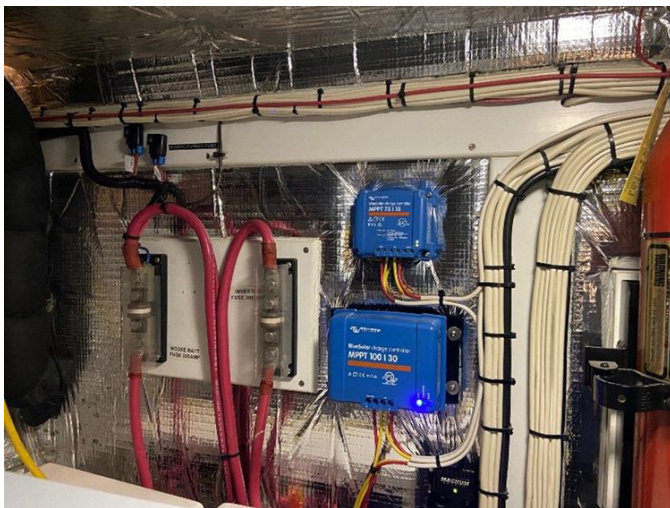
Manufacturer:

Cummins

Fuel Type:

Diesel

GALLERY



DETAILED DESCRIPTION

37 Nordic Tug

With more than two hundred built, the 37 Nordic Tug has earned its reputation as one of the most sought-after midsize cruisers, an elegant compromise between capability and manageability that appeals to owners seeking an active retirement. She blends easy, confidence-inspiring handling with notable fuel efficiency and interior volume that makes extended cruising genuinely comfortable, all founded on a solid-fiberglass, semi-displacement hull with a moderate beam and a full keel that shields the propeller. The raised pilothouse layout places two staterooms forward, presenting an island berth in the master and over-and-under berths in the guest cabin, while the full-beam salon flows openly to both the pilothouse and the cockpit to create a seamless living space. In the salon a thoughtfully arranged galley includes a full-size refrigerator, and the portside L-shaped leather settee converts to a double berth after dark, so every inch is appointed for liveaboard comfort. Finishing details elevate the experience from hardwood interior flooring to a capacious cockpit lazarette, complemented by a transom door and the added confidence of a bow thruster.

CONTACTS

Shestakov Yacht Sales is a brokerage company specializing in the sale and service of yachts worldwide. The company offers services for buying and selling both new and used motor yachts, sailing vessels, and luxury superyachts. They also provide yacht registration, insurance, technical maintenance, crew selection, and charter organization services across the U.S., Canada, Latin America, the Caribbean, and the Bahamas.

The founder and lead broker of the company is Andrey Shestakov, a licensed and certified expert with extensive experience in marine engineering and shipbuilding.

The company has an extensive network of partnerships with major yacht manufacturers worldwide and provides services in multiple languages, including Russian, Ukrainian, Spanish, and English. The office is in Dania Beach, Florida, USA.

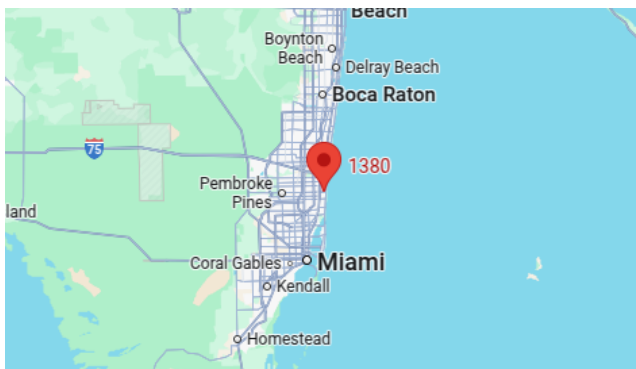
For more information and to view available yachts, you can visit the company's official website: <https://shestakovyachtsales.com>

Contact details

Phone: +1(954)274-4435

Email: andrey@shestakovyachtsales.com

Address



1380 Weeping Willow Way, Hollywood,
Florida 33019