



SHESTAKOV

Yacht Sales

## PURSUIT S 378 SPORT - PURSUIT BOATS



**Builder:** [PURSUIT BOATS](#)

**LOA:** 37' 0" (11.28 m)

**Year Built:** 2021

**Beam:** 12' 0" (3.66 m)

**Model:** S 378 Sport

**Min Draft:** 8' 6" (2.58 m)

**Price:** \$475,000 USD Subject to change.

**Max Draft:** 10' 5" (3.17 m)

[See full listing on our website](#)

**Location:** Fort Lauderdale, United States

**Cruising Speed:** 34 Knots (39.13 MPH)

**Max Speed:** 52 Knots (59.84 MPH)

If you would like to buy a yacht **PURSUIT S 378 SPORT - PURSUIT BOATS** or would like help answering any questions concerning purchasing, selling, or chartering a yacht, please call **+1(954)274-4435** or click here on <https://shestakovyachtsales.com>

---

# TABLE OF CONTENTS

---

<b>OVERVIEW .....</b>	<b>3</b>
<b>SPECIFICATIONS .....</b>	<b>4</b>
Basic Information .....	4
Dimensions .....	4
Speed, Capacities and Weight .....	4
Accommodations .....	4
Hull and Deck Information .....	5
Engine Information .....	5
<b>GALLERY .....</b>	<b>6</b>
<b>DETAILED DESCRIPTION .....</b>	<b>14</b>
<b>CONTACTS .....</b>	<b>17</b>

## OVERVIEW

---

The Pursuit S 378 Sport embodies the brand's fusion of contemporary innovation, fine craftsmanship and true offshore capability. A premium center-console designed to accommodate both serious sportfishing and leisurely cruising, she creates an inviting environment for entertaining family and guests with effortless style. Measuring 40'6" LOA with a 12' beam, this yacht is propelled by a trio of Yamaha 425 XTO outboards currently showing 537 hours. That propulsion arrangement delivers assured range, crisp handling and the versatility to perform across a wide variety of conditions.

# SPECIFICATIONS

---

## Basic Information

---

**Model Year:**  
2021

**Country:**  
United States

**Year Built:**  
2021

## Dimensions

---

**LOA:**  
37' 0" (11.28 m)

**Beam:**  
12' 0" (3.66 m)

**Min Draft:**  
8' 6" (2.58 m)

**Max Draft:**  
10' 5" (3.17 m)

## Speed, Capacities and Weight

---

**Cruise Speed:**  
34 Knots (39.13 MPH)

**Water Capacity:**  
45 Gallons

**Max Speed:**  
52 Knots (59.84 MPH)

**Fuel Capacity:**  
427 Gallons

## Accommodations

---

**Total Heads:**  
1

## Hull and Deck Information

---

**Hull Material:**

Fiberglass and Plastic Yachts

**Hull Designer:**

N/A

**Deck Material:**

Fiberglass

**Interior Designer:**

N/A

**Hull Configuration:**

N/A

## Engine Information

---

**Engines:**

3

**Engine Type:**

Outboard

**Manufacturer:**

Yamaha

**Fuel Type:**

Gas/Petrol

# GALLERY

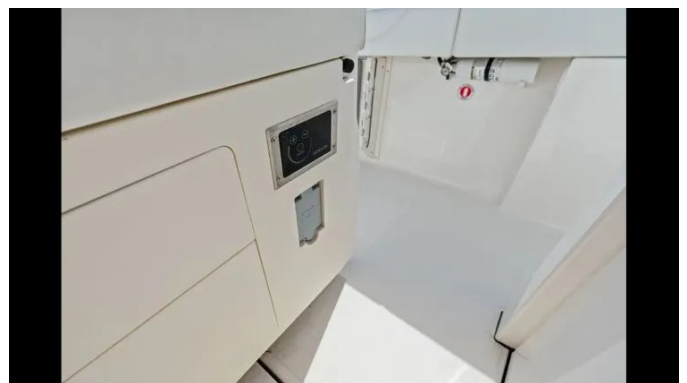


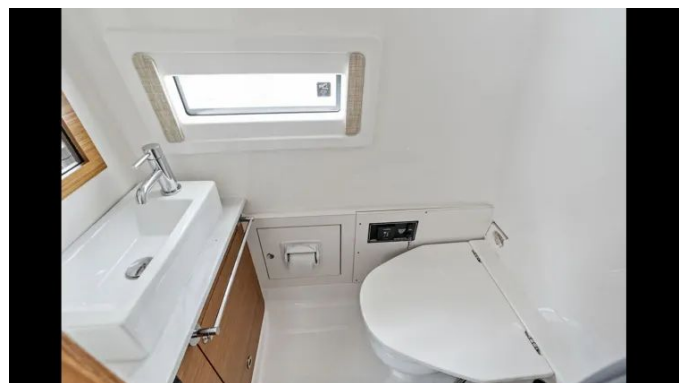


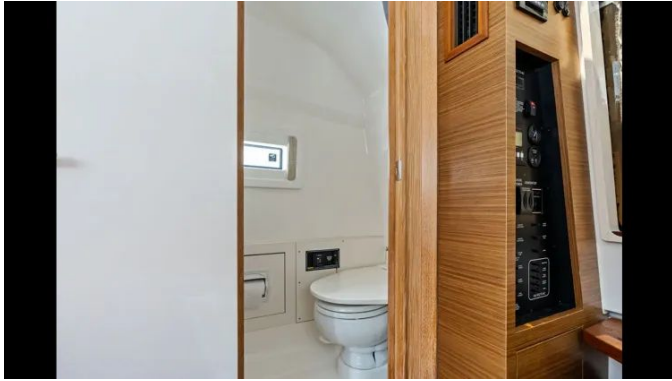












---

# DETAILED DESCRIPTION

---

## Recent upgrades and maintenance

---

Meticulous care is evident throughout the yacht's recent program of works: a new Panda generator was fitted in December 2025 to provide assured, high-quality onboard power; in August 2025 the hull received a fresh bottom job to bolster protection and refine performance; and a towing eye has been installed to extend the vessel's operational versatility.

## Cockpit & deck features

---

The cockpit presents an open, gracious layout appointed with removable tables and an electric slide-out that glides away to reveal the grill and bar, creating a seamless flow for socializing and service. Generous in-floor and transom lockers conceal and organize equipment while keeping it immediately reachable, complemented by an integrated insulated cooler and thoughtfully placed cup holders to facilitate refined entertaining. Serious anglers will appreciate the fitted outriggers and multiple rod holders, and an enhanced entertainment center—complete with drawers and a dedicated prep area—simplifies hosting and provisioning. Premium upgraded upholstery with hand-finished diamond stitching enriches every seating surface beneath an imposing hard top, which is finished by an electric retractable sun-shade for adaptable shade and comfort. Boarding is effortless and secure through a dedicated transom door equipped with a removable ladder.

## Helm station

---

A pair of large Garmin touch screens forms the focal point of the helm, paired with Yamaha joystick control and an electric bow thruster for pinpoint

low speed handling. The helm station is fitted with air conditioning to keep the captain comfortable and collected, while an upgraded JL Audio package provides rich, immersive sound. A full canvas and Eisenglass enclosure protects the helm without obstructing sightlines, preserving excellent visibility even when running offshore in rough seas.

## Cabin features

---

Step aboard to find generous headroom and a flood of natural light that together create an open, airy sanctuary below decks. An ingeniously designed settee converts easily into a berth, increasing sleeping accommodations without sacrificing style. The roomy head is appointed for comfortable extended stays, while purpose-built rod storage keeps your tackle neatly stowed and instantly accessible for the next outing.

## Performance & versatility

---

Meticulously crafted to meet the demands of every voyage, the Pursuit S 378 Sport marries commanding offshore performance with a refined, welcoming interior that preserves inviting comfort for leisurely cruises and makes entertaining aboard effortless.

## Disclaimer

---

Information about this yacht is supplied in good faith for the convenience of prospective clients; nevertheless, the completeness and accuracy of these particulars cannot be guaranteed, and no warranty is made regarding the vessel's condition. The yacht is offered subject to prior sale, alteration of price, or withdrawal from the market without notice. This material is provided by the yacht broker as an informational service to its clients and is not intended to

constitute a direct representation of any specific yacht for sale.

# CONTACTS

---

Shestakov Yacht Sales is a brokerage company specializing in the sale and service of yachts worldwide. The company offers services for buying and selling both new and used motor yachts, sailing vessels, and luxury superyachts. They also provide yacht registration, insurance, technical maintenance, crew selection, and charter organization services across the U.S., Canada, Latin America, the Caribbean, and the Bahamas.

The founder and lead broker of the company is Andrey Shestakov, a licensed and certified expert with extensive experience in marine engineering and shipbuilding.

The company has an extensive network of partnerships with major yacht manufacturers worldwide and provides services in multiple languages, including Russian, Ukrainian, Spanish, and English. The office is in Dania Beach, Florida, USA.

For more information and to view available yachts, you can visit the company's official website: <https://shestakovyachtsales.com>

## Contact details

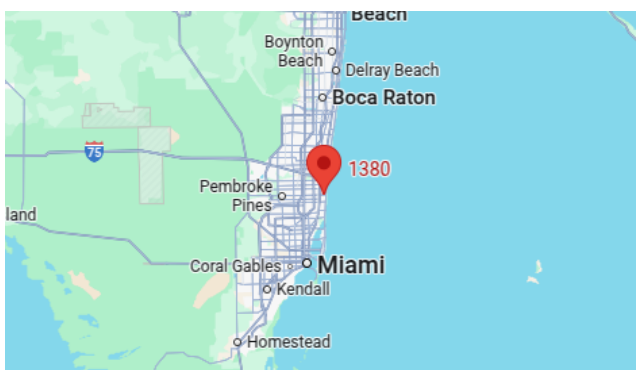
---

**Phone:** +1(954)274-4435

**Email:** [andrey@shestakovyachtsales.com](mailto:andrey@shestakovyachtsales.com)

## Address

---



1380 Weeping Willow Way, Hollywood,  
Florida 33019