

LUCKY PENNY II - GRADY-WHITE



Builder: [GRADY-WHITE](#)

Beam: 13' 0" (4.01 m)

Year Built: 2018

Min Draft: 7' 11" (2.42 m)

Model: Canyon 376

Price: \$298,900 USD Subject to change.

[See full listing on our website](#)

Location: Fort Myers, United States

LOA: 37' 0" (11.28 m)

TABLE OF CONTENTS

OVERVIEW	3
SPECIFICATIONS	5
Basic Information	5
Dimensions	5
Speed, Capacities and Weight	5
Hull and Deck Information	6
Engine Information	6
GALLERY	7
DETAILED DESCRIPTION	21
CONTACTS	26

OVERVIEW

Price Update: Now \$309,000

2018 Grady-White Canyon 376 – Flagship Center Console in Fort Myers, FL
Indoor stored and showing exceptionally low hours, this 2018 Grady-White Canyon 376 pairs serious offshore capability with refined comfort and a transferable Yamaha extended warranty for added peace of mind. Propelled by triple Yamaha 350 outboards (all under 340 hours), she effortlessly exceeds 45 knots, delivering bluewater performance and confident range for offshore passages as well as exhilarating day runs.

Designed for anglers and families alike, the cockpit is expansive and tournament-ready, anchored by dual 41-gallon livewells, abundant rod storage, a deluxe leaning post with a full tackle and rigging center, and a fold-away aft bench seat that converts the fishing deck into a social platform. A bow thruster eases close-quarters handling and docking, while multiple washdown stations and hydraulic trim tabs keep operations smooth and clean. Taco outriggers and underwater LED lighting extend both capability and ambiance.

Below deck, the cabin is an inviting retreat with a cushioned berth for two, air conditioning, a microwave, refrigerator, and a 19" LED TV, while a VacuFlush head with shower provides yacht-level convenience for extended cruises. Auxiliary power comes from a 5 kW Fisher Panda generator with approximately 160 hours, keeping systems comfortable and reliable underway.

The helm is outfitted with a premium Garmin suite—Fantom 54 radar, dual GPSMap 8616 displays, and autopilot—augmented by a FLIR IR camera for enhanced situational awareness in any conditions. Safety and seaworthy construction are evident throughout with multiple bilge pumps, self-bailing cockpit drains, robust stainless hardware, and low-profile bow rails that reflect Grady-White's reputation for durability.

Available for showing in Fort Myers, FL, this Canyon 376 is meticulously maintained, stored indoors, and turnkey for its next owner. Key highlights include triple Yamaha 350 outboards (< 340 hours), a comfortable cabin with A/C, microwave, fridge, and TV, a premium Garmin electronics suite, Taco outriggers, and underwater LED lights.

Yacht category keywords: Center Console, Offshore, Sportfish, Bluewater, Saltwater Fishing, Fishing Yacht, Dayboat, Outboard, Luxury Center Console

Don't wait—this boat is fully equipped and ready to run.

SPECIFICATIONS

Basic Information

Category:
Motor yachts

Year Built:
2018

Sub category:
Center Console Yachts

Country:
United States

Model Year:
2018

Dimensions

LOA:
37' 0" (11.28 m)

Beam:
13' 0" (4.01 m)

Min Draft:
7' 11" (2.42 m)

Speed, Capacities and Weight

Water Capacity:
54 Gallons

Fuel Capacity:
390 Gallons

Hull and Deck Information

Hull Material:

Fiberglass and Plastic Yachts

Hull Designer:

N/A

Deck Material:

Fiberglass

Interior Designer:

N/A

Hull Configuration:

Monohull

Engine Information

Engines:

3

Engine Type:

Outboard

Manufacturer:

Yamaha

Fuel Type:

Gas/Petrol

GALLERY

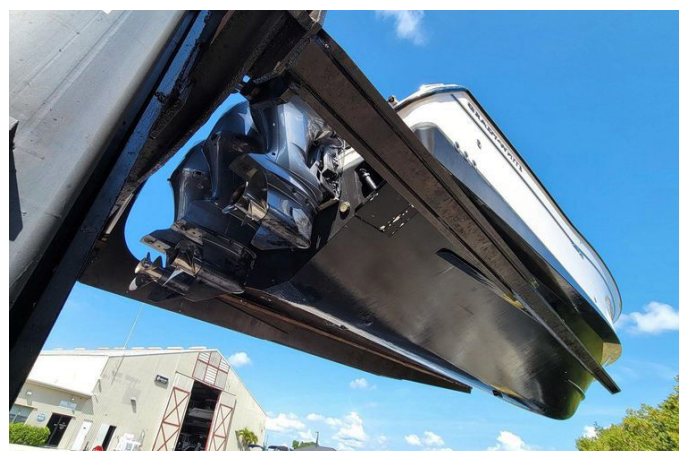


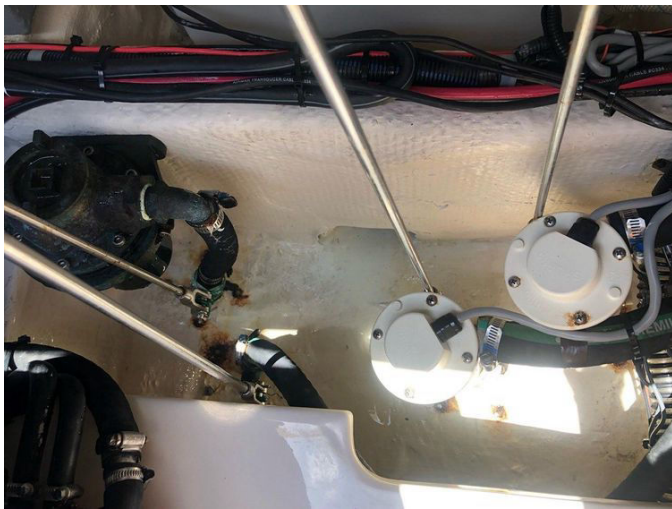


























DETAILED DESCRIPTION

Installed factory options and notable items

Factory options elevate this vessel's capability and comfort from the moment you step aboard, beginning with a transferable Yamaha warranty that provides confident coverage through June 2026. Embarkation is effortless via a portside cockpit door with an integrated boarding ladder, and the cabin offers a flat screen nineteen inch LED LCD TV with a DVD player and audio/visual inputs for relaxed entertainment. The stern freezer converts the aft fish box into a true refrigerator/freezer governed by a digitally controlled thermostat and fitted with an overboard drain, while four underwater blue LED lights cast a striking glow when at anchor. Anglers benefit from a forty one gallon livewell at the lean bar with a see through lid, complemented by a Taco fifteen foot radial outrigger kit mounted to the T top, and up forward port and starboard cushioned bow seating features two forward facing fold away bolstered backrests for secure, ergonomic lounging underway.

Accommodations

Within the console the cabin is thoughtfully appointed for overnighting and refined day use, offering convenient power and connectivity through a five volt duplex USB accessory outlet and climate control via a six thousand BTU air conditioner in the console that feeds two outlets at the helm for cool command in warm conditions. A forward cushioned berth with an electrically adjustable bolster converts from lounge to sleeping space in seconds and is safeguarded by a carbon monoxide monitor. Rich materials and smart stowage permeate the interior, with a cherry wall that conceals a mirrored storage cabinet, a magazine rack and rigging access, a composite cherry and holly sole, and two stainless steel drink holders. Practical illumination and access

features include a helm access door with light, a dome light, three recessed LEDs and a tinted glass skylight, while galley and convenience appointments such as a microwave, mirror, refrigerator, vertical lockable rod storage for five, aft bulk storage and additional pocket storage ensure every essential has its place. The stand up head completes the accommodations with a shower and storage drawer, a sink set into a Corian counter, and a VacuFlush toilet with a fold down lid and cushion served by a ten gallon holding tank with pump out for convenient shoreside service.

Electronics and helm details

Command the voyage with a seamlessly integrated Garmin suite led by the Fantom fifty four open array radar, a GHC20 autopilot, a GPSmap 8616 multifunction display paired with a GPSmap 8616xsv, and a Garmin Marine VHF 315 RAM mic, all complemented by a Flir IR camera mounted on the hardtop. Networked Garmin displays consolidate Yamaha data and control with Flir camera display and controls, full GPS and charting, fish finding with side and down scan sonar, radar and autopilot control to give professional grade situational awareness at a glance. The console offers abundant power with a 110 volt duplex outlet, a 12 volt outlet and a five volt duplex USB port, while precision handling is delivered by a Lewmar bow thruster with joystick control, a magnetic compass, SeaStar hydraulic tilt steering with power assist and a 316 grade stainless steel wheel with control knob. Entertainment is provided by a Fusion stereo system with AM/FM tuner, MP3 auxiliary audio connections with amplifier, Bluetooth and remote control with fold down storage, balanced through two speakers at the bow, two in the cabin, two in the cockpit and two in the T top. Secure stowage features an electromechanically operated electronics enclosure, a lockable acrylic console door and storage under the footrest, and the T top crowns the helm with an integrated painted aluminum frame and radio box, a hatch, storage net, three

LED spreader lights, four tri-colored recessed LEDs for red, blue and white, outrigger plates, two stereo speakers, elegant ivory wing curtains and a forward-facing LED light bar. The helm environment is completed by a solar-powered ventilator, a water level indicator gauge, a tinted frameless acrylic window, a tempered glass windshield integrated with the T-top, a freshwater windshield washer and a windshield wiper. The deluxe lean bar amplifies fishability and comfort with four stainless drink holders, two fold-down footrests and two knife and pliers holders, while twin port and starboard live wells each provide a forty-one gallon insulated raw water habitat with see-through lids, LED lighting, full column distribution inlets, overboard drains and 1100 GPH pumps. A dedicated lure holder, a freshwater-equipped rigging station at the lean bar, six rod holders and three Command Elite horizontally adjustable contoured helm chairs with deluxe cushioning and flip-up bolsters, plus lockable bulk storage and lockable tackle drawers, complete a helm built for serious angling and effortless cruising.

Electrical

Power systems are engineered for autonomy and simplicity with a Fisher Panda five kilowatt diesel generator that shows one hundred sixty hours and carries a twenty-three gallon fuel capacity, delivering quiet, efficient onboard power. A dedicated battery charger keeps reserves topped up, with batteries conveniently located beneath the lean bar seating and managed via battery select switches, and shore power with a galvanic isolator protects the system when connected at the dock for safe recharging and relaxed evenings aboard.

Deck and hull

Built on a foundation of strength, the hull and deck are one hundred percent hand-laid and fitted with eight flush-mount pop-up cleats—two at the bow,

four spring and two aft—for secure, versatile mooring. Through bolted 316 grade stainless steel hardware and a high density PVC rubrail with a stainless insert underscore lasting durability, and at the bow an anchor windlass with remote switches at both the helm and the windlass simplifies anchoring operations. Two bow rod holders and forward bolsters support fishing and relaxation, while port and starboard fish box cushions enhance seating comfort. Storage is abundant with a forward anchor locker and rode storage, rod pods equipped with nets, LED lighting and four drink holders, and signature bow seating to port and starboard with two forward facing fold away bolstered backrests, along with a molded forward console seat with cushion that adds an inviting perch underway. In the cockpit, comfort meets utility with padded bolsters, a recessed freshwater shower, blue LED cockpit lights and a dedicated cutting board; six stainless steel drink holders enhance convenience and insulated fish boxes include port and starboard compartments of two hundred sixty three quart (two hundred forty eight point nine liter) with overboard drains and an aft box of two hundred ninety one quart (two hundred seventy five point four liter) with two lights and an overboard drain. International LED lighting keeps you visible and rod management is comprehensive with ten cockpit rod holders and ten horizontal rod storage racks. A fold away aft bench seat with cushion, heavy duty 316 stainless steel stern eyes, an aft transom drop in box and a fiberglass transom door add security and convenience, while washdowns include two freshwater outlets and two pressurized raw water outlets with hoses for swift clean ups after the bite.

Engine and mechanical details

Everyday operation is simplified with an aft hose attachment engine flush system, one per engine, and hydraulic trim tabs with indicator and retractor to dial in perfect running angles. Hot water comforts are provided by a six gallon

water heater that also serves the cockpit shower, while a fifty four gallon freshwater tank extends your time off the grid. Safety systems are engineered in from stem to stern with two automatic bilge pumps delivering a total of three thousand GPH, basic flotation, and a low profile 316 stainless steel bow rail. Cockpit toe rails, a composite stringer system and transom, two console grab rails, a fire extinguisher holder and two lean bar grab rails enhance security underway, and a nonskid fiberglass liner, a self bailing cockpit with six cockpit drains and stainless steel through hull fittings complete a robust, seaworthy platform.

CONTACTS

Shestakov Yacht Sales is a brokerage company specializing in the sale and service of yachts worldwide. The company offers services for buying and selling both new and used motor yachts, sailing vessels, and luxury superyachts. They also provide yacht registration, insurance, technical maintenance, crew selection, and charter organization services across the U.S., Canada, Latin America, the Caribbean, and the Bahamas.

The founder and lead broker of the company is Andrey Shestakov, a licensed and certified expert with extensive experience in marine engineering and shipbuilding.

The company has an extensive network of partnerships with major yacht manufacturers worldwide and provides services in multiple languages, including Russian, Ukrainian, Spanish, and English. The office is in Dania Beach, Florida, USA.

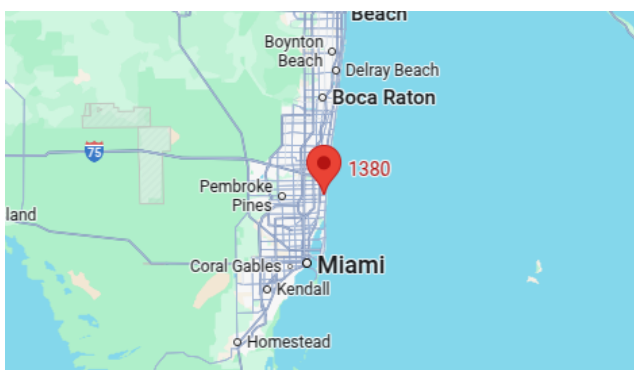
For more information and to view available yachts, you can visit the company's official website: <https://shestakovyachtsales.com>

Contact details

Phone: +1(954)274-4435

Email: andrey@shestakovyachtsales.com

Address



1380 Weeping Willow Way, Hollywood,
Florida 33019