



SHESTAKOV

Yacht Sales

LAST CALL - INTREPID



Builder: [Intrepid](#)

Beam: 10' 0" (3.20 m)

Year Built: 2025

Max Draft: 10' 5" (3.17 m)

Model: 375 Nomad SE

Price: \$585,000 USD Subject to change.

[See full listing on our website](#)

Location: North Palm Beach, United States

LOA: 37' 0" (11.43 m)

If you would like to buy a yacht **LAST CALL - INTREPID** or would like help answering any questions concerning purchasing, selling, or chartering a yacht, please call **+1(954)274-4435** or click here on <https://shestakovyachtsales.com>

TABLE OF CONTENTS

OVERVIEW	3
SPECIFICATIONS	4
Basic Information	4
Dimensions	4
Speed, Capacities and Weight	4
Hull and Deck Information	5
Engine Information	5
GALLERY	6
DETAILED DESCRIPTION	14
CONTACTS	16

OVERVIEW

Purpose-built for high-speed pursuit yet refined for onboard comfort, this new 2025, 37-foot sport fisherman brings tournament capability into a sophisticated motor yacht package. Built in the United States with robust fiberglass construction and a matching fiberglass deck, its clean, athletic silhouette is at home on offshore chop while remaining perfectly maneuverable in tighter marinas. A 10-foot beam creates generous working room without dulling handling, and the roomy cockpit offers an uncluttered, fishable layout ideal for serious anglers. Propelled by triple Mercury outboards, the boat delivers instant throttle response, strong acceleration and efficient, quiet cruising that makes long runs to productive grounds both fast and composed.

Designed for extended days and ambitious cruises, the platform carries a substantial 406-gallon fuel capacity complemented by onboard freshwater for rinsing and comfort throughout the day. Practical, low-maintenance non-skid fiberglass surfaces, deep lockers for gear, and a secure, ergonomically arranged helm contribute to a purposeful, seaworthy deck environment, while comfortable seating provides a welcoming retreat for family and crew between bites. Whether heading out at first light for a tournament, making a rapid offshore window, or savoring a coastal sunset cruise, this versatile sportfisher transitions effortlessly from hard-charging pursuit to relaxed entertaining, expressing contemporary sportfishing DNA within an elevated motor yacht experience.

Delivered new in 2025 and currently offered in the United States, this 37-footer strikes a rare balance between bluewater confidence and day-boat accessibility. For owners who expect uncompromised performance and understated elegance, it represents a forward-looking sportfishing platform crafted to chase distant horizons and return in unmistakable style.

SPECIFICATIONS

Basic Information

Model Year:
2025

Country:
United States

Year Built:
2025

Dimensions

LOA:
37' 0" (11.43 m)

Max Draft:
10' 5" (3.17 m)

Beam:
10' 0" (3.20 m)

Speed, Capacities and Weight

Water Capacity:
30 Gallons

Fuel Capacity:
406 Gallons

Hull and Deck Information

Hull Material:

Fiberglass and Plastic Yachts

Hull Designer:

N/A

Deck Material:

Fiberglass

Interior Designer:

N/A

Hull Configuration:

N/A

Engine Information

Engines:

3

Engine Type:

Outboard

Manufacturer:

Mercury

Fuel Type:

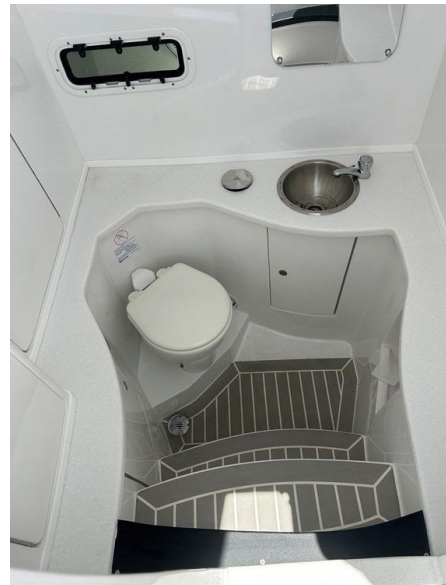
Gas/Petrol

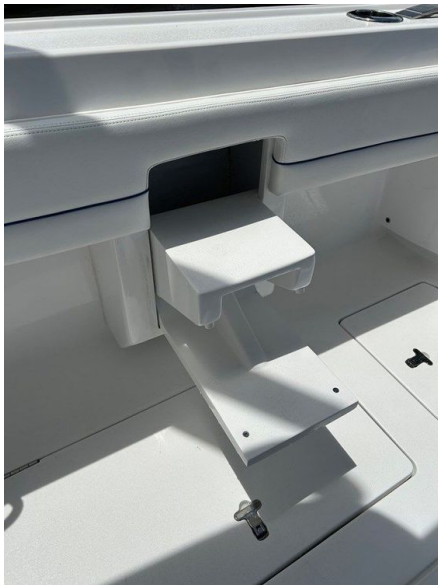
GALLERY



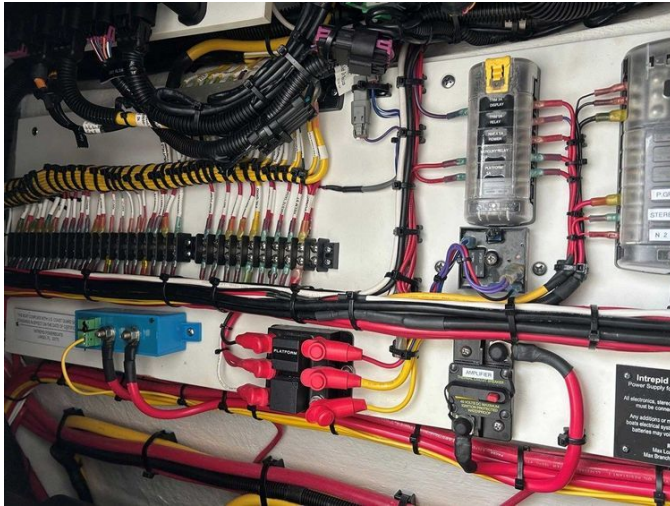














DETAILED DESCRIPTION

Features

This 2025 375 Intrepid Nomad SE is propelled by three Mercury 400 Verado V-10 outboards and arrives with two years of factory warranty remaining plus the option to extend coverage with an additional five-year plan. Sophisticated engine management and handling are provided by Mercury Vessel View and Mercury Active Trim, while Joystick Piloting with Skyhook, a bow thruster and a windlass anchor system fitted with a polished stainless steel anchor ensure effortless station-keeping and secure anchoring. The helm benefits from an actuated deck that rises four inches, an upgraded fresh water anchor wash and a custom tilt steering wheel with spinner nob, all finished to a high standard. An enhanced fuel system yields a total capacity of 406 gallons—300 gallons in the main tanks with a 106-gallon auxiliary—supporting extended passages. The exterior is distinguished by a custom metallic Imron medium blue hull and a matching matte-textured underside to the hardtop, complemented by upgraded diamond-quilted white upholstery for an elevated aesthetic.

Deck storage is intelligently arranged with forward, port and starboard fender lockers equipped with built-in fender and dock line racks, while a forward actuated table with a lounge cushion insert invites relaxation and a built-in trash can at the port-side helm adds practical convenience. Seating versatility comes courtesy of a fold-down rear bench and bow seats that convert into lounge chairs, and onboard systems simplify maintenance with fresh water and raw water washdowns plus an integrated reverse automatic engine flush system. Boarding and water access are made simple via a swing-in dive door with a fold-out heavy-duty ladder, augmented by a transom shower and a walk-down head with shower and sink for onboard comfort. Entertaining and

provisioning are handled by a cockpit summer kitchen with sink, a pull-out Frigid Rigid cooler and abundant storage, all shaded by an electric aft sun shade, and a custom pull-out gunwale step improves boarding ergonomics. Anglers will appreciate twin aquarium-style baitwells/livewells—one port and one starboard—each holding 37 gallons and fitted with windows and lights, seven integrated splash well rod holders, six Mate Series cup-and-rod holders, forward gunwale rod lockers hidden inside the backrests sized for six rods, and Taco carbon fiber outriggers mounted to the hardtop. Navigation and entertainment are comprehensive, centered on dual Garmin 8617 multifunction displays paired with a Garmin 72 mile color radar, a Fusion 770 Apollo stereo with two full-function remote controls driving JL Audio speakers, subwoofer and amplifiers, plus an ICOM M400BB VHF with PA speaker. Illumination and security are addressed with a Lumitec Razor LED lightbar on the forward hardtop and a GOST IDP vessel tracking system. A 30-amp shore power inlet and dual built-in battery chargers keep systems fully powered, and protective gear including helm seat covers, a helm dash cover and three engine covers help preserve the yacht's immaculate presentation.

Description

Offered in near new condition, this Intrepid 375 comes fully equipped with an array of options and has been consistently stored on a boat lift, a testament to the careful stewardship that keeps her in exceptional condition. For three decades Intrepid Boats has led the stepped hull, custom center console segment, and LAST CALL exemplifies that pedigree as a sophisticated, multi mission platform—perfect for serious fishing, diving adventures, relaxed cruising or coastal exploration. A change in the owner's plans presents a rare chance to take delivery immediately without any build time delay; contact us to arrange a private showing.

CONTACTS

Shestakov Yacht Sales is a brokerage company specializing in the sale and service of yachts worldwide. The company offers services for buying and selling both new and used motor yachts, sailing vessels, and luxury superyachts. They also provide yacht registration, insurance, technical maintenance, crew selection, and charter organization services across the U.S., Canada, Latin America, the Caribbean, and the Bahamas.

The founder and lead broker of the company is Andrey Shestakov, a licensed and certified expert with extensive experience in marine engineering and shipbuilding.

The company has an extensive network of partnerships with major yacht manufacturers worldwide and provides services in multiple languages, including Russian, Ukrainian, Spanish, and English. The office is in Dania Beach, Florida, USA.

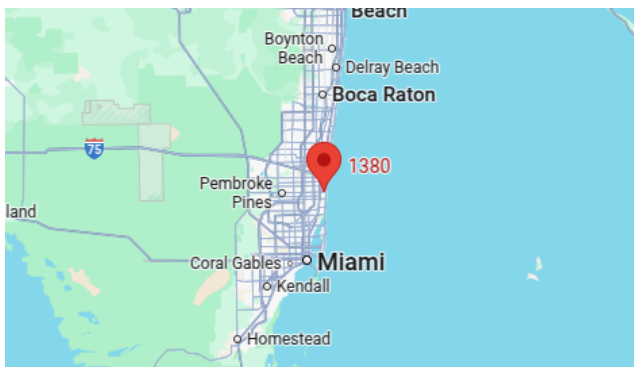
For more information and to view available yachts, you can visit the company's official website: <https://shestakovyachtsales.com>

Contact details

Phone: +1(954)274-4435

Email: andrey@shestakovyachtsales.com

Address



1380 Weeping Willow Way, Hollywood,
Florida 33019