

LAZY GIRL - FORMULA BOATS



Builder: [Formula Boats](#)

LOA: 38' 0" (11.76 m)

Year Built: 2024

Beam: 12' 0" (3.66 m)

Model: 387 CC Fish

Max Draft: 12' 7" (3.83 m)

Price: \$999,999 USD Subject to change.

Cruising Speed: 43 Knots (43 MPH)

[See full listing on our website](#)

Location: Fort Myers Beach, United States

Max Speed: 58 Knots (58 MPH)

TABLE OF CONTENTS

OVERVIEW	3
SPECIFICATIONS	4
Basic Information	4
Dimensions	4
Speed, Capacities and Weight	4
Hull and Deck Information	5
Engine Information	5
GALLERY	6
DETAILED DESCRIPTION	12
CONTACTS	14

OVERVIEW

Experience an exquisite synthesis of upscale appointments, advanced technology, and true bluewater capability aboard this lavishly appointed 2024 Formula 387 Center Console Fish, designed for owners who demand both exhilarating performance and refined comfort. Motivated by twin Mercury 600 V12 Verado outboards producing a combined 1,200 horsepower and recording roughly 35 hours, this center-console sportfisher offers thrilling pace without sacrificing the polished finish and creature comforts Formula owners expect.

SPECIFICATIONS

Basic Information

Model Year:
2024

Country:
United States

Year Built:
2024

Dimensions

LOA:
38' 0" (11.76 m)

Max Draft:
12' 7" (3.83 m)

Beam:
12' 0" (3.66 m)

Speed, Capacities and Weight

Cruise Speed:
43 Knots (43 MPH)

Water Capacity:
55 Gallons

Max Speed:
58 Knots (58 MPH)

Fuel Capacity:
500 Gallons

Hull and Deck Information

Hull Material:

Fiberglass and Plastic Yachts

Hull Designer:

N/A

Deck Material:

Fiberglass

Interior Designer:

N/A

Hull Configuration:

N/A

Engine Information

Engines:

2

Engine Type:

Outboard

Manufacturer:

Mercury

Fuel Type:

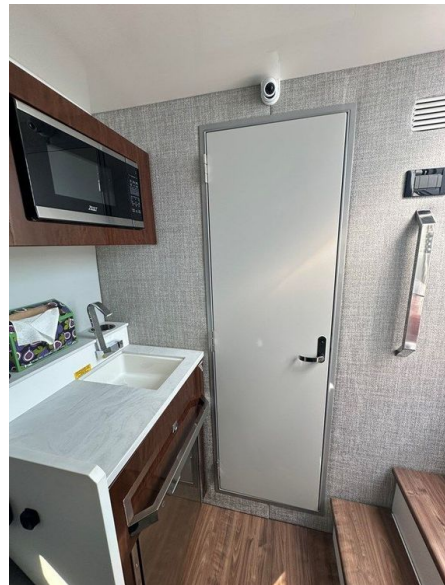
Gas/Petrol

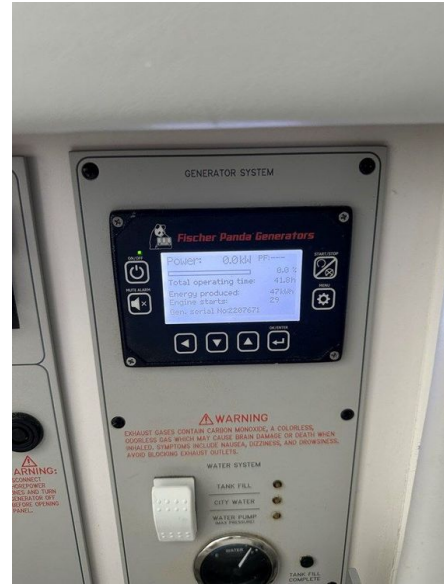
GALLERY













DETAILED DESCRIPTION

Main description

Step aboard a vessel where refined luxury, cutting-edge engineering, and true offshore capability converge: the 2024 Formula 387 Center Console Fish.

Propelled by twin Mercury 600 V12 Verado outboards delivering a combined 1,200 horsepower and displaying approximately 35 hours, this yacht offers breathtaking acceleration and top-end performance while preserving the composure and upscale finish expected from Formula.

Beneath the waterline the renowned twin-step FAS3Tech hull provides a composed, confidence-inspiring ride in blue-water conditions, maximizing efficiency and handling so the boat performs equally well chasing pelagics offshore, leisurely cruising the coastline with family, or hosting friends at the sandbar.

The cockpit is engineered for serious anglers and thoughtful entertaining alike, featuring dual pressurized livewells, multiple insulated fish boxes, dedicated premium tackle storage, electric reel outlets, and a full complement of 18-foot outriggers to extend your fishing reach and capability.

The helm is a command center of modern navigation and control, with twin Raymarine Axiom XL 22-inch displays integrated alongside Mercury Joystick Piloting and advanced navigation systems to deliver intuitive operation and enhanced situational awareness on every passage.

Guest comfort is abundant throughout the yacht, from generous seating and an air-conditioned helm area to an electric grill and a premium sound system that set the tone for leisurely days afloat. Belowdecks, a beautifully appointed cabin provides overnight accommodations and an enclosed head for extended cruises in comfort and privacy.

With low hours and a comprehensive options list, this highly specified 387 CCF

represents a rare chance to acquire one of Formula's most desirable center consoles without the lead time of new construction.

Features

Twin Mercury 600 V12 Verado outboards provide the motive force for this performance-oriented vessel, with approximately 35 engine hours recorded, while the Formula FAS³Tech twin-step hull delivers remarkable efficiency and composed handling in all conditions. Mercury Joystick Piloting offers refined, intuitive control at the helm, and a Seakeeper 3 gyro stabilizer ensures exceptional steadiness both underway and when at anchor. Navigation and systems are managed with clarity on twin Raymarine Axiom XL 22-inch displays, and the fishing outfitting is uncompromising, featuring dual pressurized livewells, multiple insulated fish boxes, eighteen-foot outriggers and dedicated electric reel outlets. Onboard entertaining is elevated by an electric grill, 18,000 BTU cockpit air conditioning and a premium JL Audio sound system, while strategically placed underwater lights create a sophisticated evening setting. A lightweight carbon fiber gangway facilitates graceful boarding, and a commodious cabin with overnight accommodations invites leisurely escapes.

CONTACTS

Shestakov Yacht Sales is a brokerage company specializing in the sale and service of yachts worldwide. The company offers services for buying and selling both new and used motor yachts, sailing vessels, and luxury superyachts. They also provide yacht registration, insurance, technical maintenance, crew selection, and charter organization services across the U.S., Canada, Latin America, the Caribbean, and the Bahamas.

The founder and lead broker of the company is Andrey Shestakov, a licensed and certified expert with extensive experience in marine engineering and shipbuilding.

The company has an extensive network of partnerships with major yacht manufacturers worldwide and provides services in multiple languages, including Russian, Ukrainian, Spanish, and English. The office is in Dania Beach, Florida, USA.

For more information and to view available yachts, you can visit the company's official website: <https://shestakovyachtsales.com>

Contact details

Phone: +1(954)274-4435

Email: andrey@shestakovyachtsales.com

Address



1380 Weeping Willow Way, Hollywood,
Florida 33019