

2005 NORDIC TUG 37 - NORDIC TUGS



Builder: [Nordic Tugs](#)

Beam: 12' 0" (3.94 m)

Year Built: 2005

Max Draft: 13' 1" (4 m)

Model: 37

Price: \$390,000 USD Subject to change.

[See full listing on our website](#)

Location: Seattle, United States

LOA: 39' 0" (12.12 m)

TABLE OF CONTENTS

OVERVIEW	3
SPECIFICATIONS	6
Basic Information	6
Dimensions	6
Speed, Capacities and Weight	6
Accommodations	6
Hull and Deck Information	7
Engine Information	7
GALLERY	8
DETAILED DESCRIPTION	17
CONTACTS	22

OVERVIEW

2005 Nordic Tug 37

This exquisite 2005 Nordic Tug 37 has been lovingly cared for, both in terms of mechanics and aesthetics, making it a standout choice in the yacht market! With only 2100 hours on its powerful 330hp Cummins Diesel engine, it is perfectly poised for its next adventure and is ready for immediate use by its new owner.

Whisky Mama has seen numerous enhancements and refurbishments to boost its performance and comfort:

Crane Motor Rebuilt and Dynema Cable Installed (2023)

Bow Thruster Overhauled (2022)

Synthetic Decking Installed (2021)

VHF Antenna Replaced (2021)

Shaft Seal Renewed (January 2021)

Cam Guard Added with Every Oil Change

Detailed Maintenance Records for Main Engine, Generator, and Dinghy Outboard Available

Oil Analysis for Each Scheduled Oil Change

Engine Impellers Replaced (January 2024)

House and Decks Resealed (2021)

Dual 330W Solar Panels (2021)

3000W Victron Inverter Charger (2021)

600Ah Victron Li-Ion Battery Bank (2022)

New Rudder (2021)

New Keel Shoe (2021)

Amtico Indoor Decking Installed (2021)

AB Aluminum Soled Dinghy with Tohatsu 15hp Engine (2021)

New Fridge and Freezer (2022)

Dual Stage Propane Regulator (2024)

Additional Features:

Rocket Launchers on Aft Cockpit Rail

Spitfire Grill on Aft Cockpit Rail

Cockpit Bench Seat with Propane Storage

Freshwater Washdown in Cockpit and at Windlass

Electric Heater at Aft Entrance

Backup Camera

600lb Crane on Boat Deck

Cell Phone Extender

Dual VHF Antennas

Raymarine Radar

Search Light

Lifesling

250ft Stern Tie Line on Reel

TV Wiring Aft of Sofa in Saloon

Propane Cooktop and Oven

Microwave

Autopilot

Espar Diesel Heater

Anemometer

Fusion Stereo with New KEF Speakers

Port and Starboard Side Access Doors

1200W Tigres Windlass

20kg Rocna Anchor

The owners have dedicated significant care to this vessel and are now ready for their next journey. If you are interested in exploring yacht sales at the current boat location or wish to purchase a yacht that embodies luxury and performance, please contact us for any questions or to schedule a private viewing.

SPECIFICATIONS

Basic Information

Category:
Motor yachts

Year Built:
2005

Model Year:
2005

Country:
United States

Dimensions

LOA:
39' 0" (12.12 m)

Max Draft:
13' 1" (4 m)

Beam:
12' 0" (3.94 m)

Speed, Capacities and Weight

Water Capacity:
144 Gallons

Fuel Capacity:
324 Gallons

Accommodations

Sleeps:
3

Total Heads:
1

Hull and Deck Information

Hull Material:

Fiberglass and Plastic Yachts

Hull Designer:

N/A

Deck Material:

Fiberglass

Interior Designer:

N/A

Hull Configuration:

N/A

Engine Information

Engines:

1

Engine Type:

Inboard

Manufacturer:

Cummins

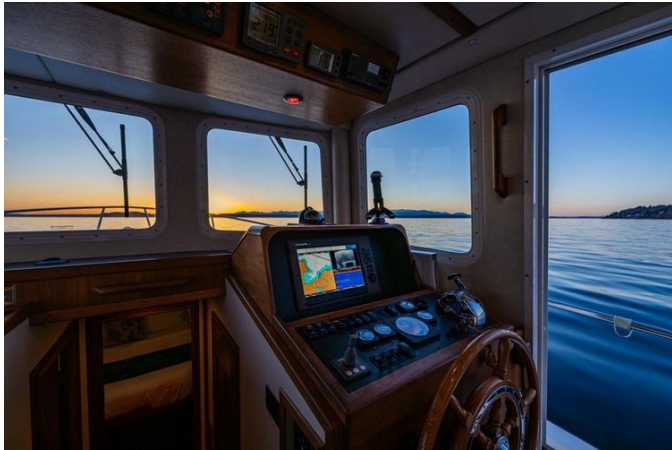
Fuel Type:

Diesel

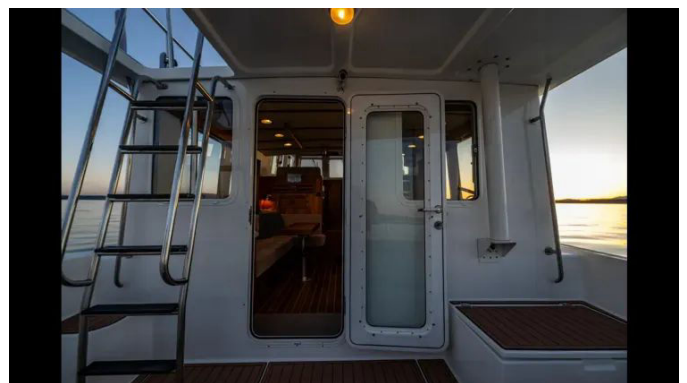
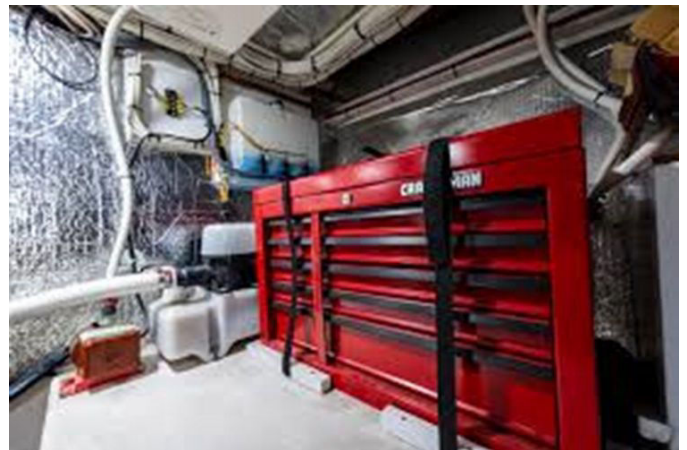
GALLERY

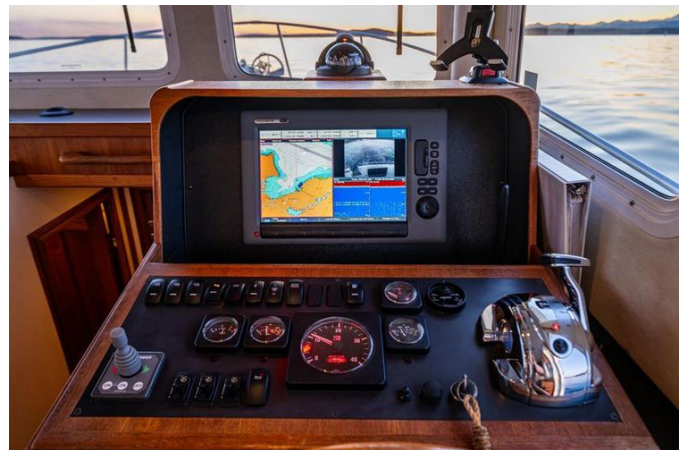
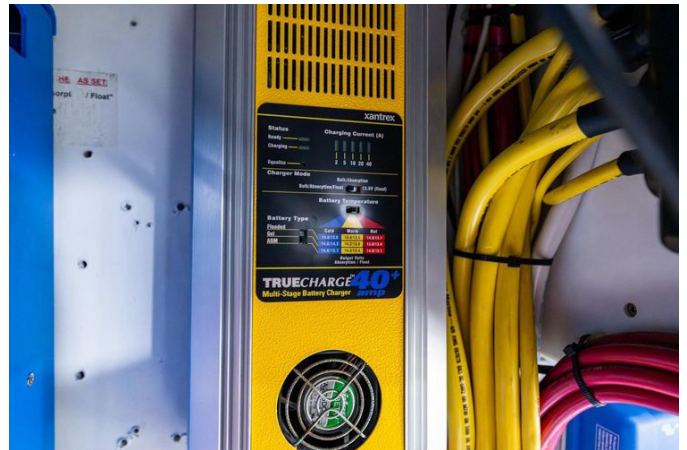


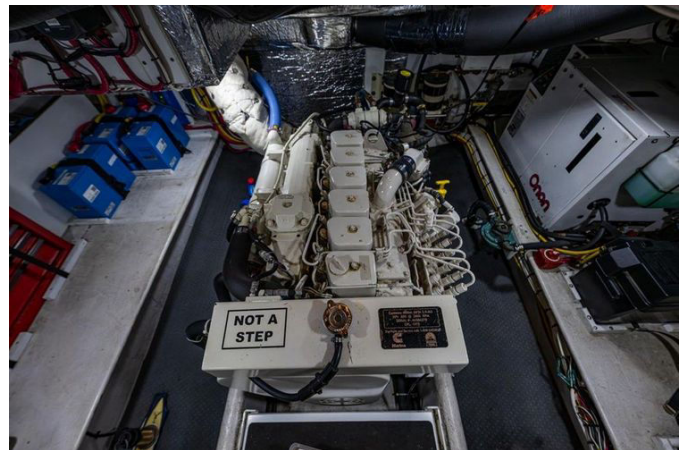
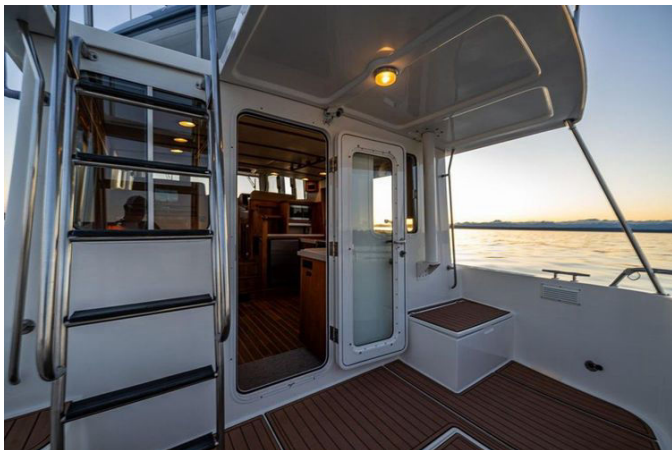
















DETAILED DESCRIPTION

Section name

This 2005 Nordic Tug 37, lovingly named Whisky Mama, exemplifies superior nautical craftsmanship, having been carefully preserved both in terms of mechanics and appearance. With just 2100 hours on its sturdy 330hp Cummins Diesel engine, it is poised for countless more journeys with its future owner. Whisky Mama is genuinely ready for immediate use, with most major systems either refurbished or upgraded to guarantee peak performance and dependability.

In 2023, the crane motor was overhauled and the cable was replaced with Dynema, while the bow thruster underwent a complete rebuild in 2022. The yacht features new synthetic decking and a VHF antenna, both installed in 2021, along with a shaft seal that was renewed in early 2021. The diligent owners have consistently maintained the vessel, adding Cam Guard with each oil change and providing comprehensive maintenance records for the main engine, generator, and dinghy outboard. Oil analysis is available for every scheduled oil change, offering peace of mind for the meticulous buyer. Looking forward, impellers for both engines are scheduled for replacement in early 2024.

The yacht's structure and decks were resealed in 2021, and it is outfitted with dual 330W solar panels and a 3000W Victron inverter charger, both installed in 2021. A 600Ah Victron Li-Ion battery bank was added in 2022, boosting its energy efficiency. The vessel also includes a new rudder and keel shoe, both installed in 2021, along with new Amtico indoor decking. For those who love to explore, a new AB aluminum-soled dinghy with a Tohatsu 15hp engine was added in 2021. The galley is well-equipped with a new fridge and freezer, installed in 2022, and a new dual-stage propane regulator set for installation in

2024.

Whisky Mama is outfitted with a variety of additional features that enhance its functionality and comfort. Rocket launchers and a Spitfire grill embellish the aft cockpit rail, while a bench seat with propane storage and freshwater washdowns in the cockpit and at the windlass add convenience. An electric heater at the aft entrance provides warmth on cooler days, and a backup camera enhances safety. The boat deck is equipped with a 600lb crane, and a cell phone extender ensures connectivity. Twin VHF antennas, Raymarine radar, a searchlight, and a Lifesling are among the safety and navigation features. A 250ft stern tie line on a reel, TV wiring aft of the sofa in the saloon, and a propane cooktop and oven complete the onboard amenities. The vessel also includes a microwave, autopilot, Espar diesel heater, anemometer, and a Fusion stereo system with newly installed KEF speakers. Port and starboard side access doors, a 1200W Tigres windlass, and a 20kg Rocna anchor complete its impressive list of features.

The owners have invested significant care and attention into this vessel and are now ready for their next adventure. If you have any inquiries or wish to schedule a private viewing, please feel free to reach out.

Other details

The Nordic Tug 37 is a highly adaptable yacht, available with or without a flybridge and offering two unique layouts to meet the preferences of discerning buyers. You can select the favored twin stateroom arrangement or opt for the convertible layout, which allows for the addition of a second head, a laundry room, or a study. Equipped with a fuel-efficient Cummins diesel engine with electronic controls, this yacht can reach impressive speeds of over 15 knots. Despite its power, it remains economical, capable of traveling over 1,000 nautical miles while using less than 3 gallons of fuel per hour.

The Nordic Tug 37 provides accommodations similar to the larger Nordic Tug

42, but in a more compact and budget-friendly form. Designed by Lynn Senour, the creative mind behind the Nordic Tug series, the 37 shares many features with its larger and smaller siblings. These include a roomy ship-style wheelhouse, easy deck access from both sides, and a hand-laid fiberglass hull with a hard chine and full keel. The yacht retains the same speed and sea-keeping qualities that are trademarks of the Nordic Tug line. Notably, the waterline length of the 37 is actually 39 feet 10 inches, due to a molded-in swim step that extends the hull, enhancing speed, stability, and fuel efficiency. Please be aware that while the company provides these details in good faith, it cannot guarantee or ensure the accuracy of this information or the condition of the vessel. Potential buyers are advised to have their agents or surveyors verify any details they wish to confirm. This vessel is offered subject to prior sale, price change, or withdrawal without notice.

Features

This yacht comes with an extensive array of electronics and equipment crafted to elevate your seafaring adventures. For navigation and safety, the vessel is outfitted with a depth sounder, radar, and instruments to measure wind speed and direction, all seamlessly integrated into an advanced navigation center. A plotter and autopilot system guarantee accurate course plotting, while a radio, compass, GPS, and VHF ensure dependable communication and orientation on the water.

Inside, the yacht provides a variety of amenities for comfort and ease. A bow thruster enhances maneuverability, and an electric bilge pump keeps the vessel dry and secure. Culinary needs are catered to with an oven and microwave, while the marine head offers essential facilities. Heating and hot water systems contribute to onboard comfort, and a refrigerator keeps your provisions fresh. A battery charger supports the vessel's power systems, ensuring all equipment operates efficiently.

Externally, the yacht is equipped with a tender for effortless shore excursions and a solar panel to boost energy efficiency and sustainability. These features combine to create a vessel that is not only well-prepared for navigation and safety but also provides the comforts and conveniences of home while at sea.

Propulsion

This yacht is driven by a sturdy Cummins engine, specifically the 6BTA 5.8M3 model, crafted in 2005. Offering a total power of 330 horsepower, this inboard diesel engine is engineered to deliver both reliability and high performance. With 2100 hours on the clock, it has been meticulously maintained and is prepared to provide many more hours of reliable service. The diesel engine choice ensures excellent fuel efficiency and durability, making it an ideal propulsion system for long-distance cruising and extended journeys. This powerful engine configuration not only boosts the yacht's performance but also ensures a smooth and pleasurable sailing experience.

Specification

This yacht features remarkable dimensions and accommodations, making it an ideal choice for those seeking both comfort and performance on the water. With a total length of 39.92 feet and a beam of 12.92 feet, the vessel provides generous space for relaxation and movement. A maximum draft of 4 feet allows for adaptable navigation across various water conditions, while the cabin headroom of 6.58 feet ensures a comfortable interior environment. The waterline length is 37.67 feet, enhancing the yacht's stability and smooth sailing abilities.

With a dry weight of 22,000 pounds, this yacht is both robust and well-balanced. It comes equipped with a fresh water tank that holds 144 gallons and a fuel tank with a capacity of 324 gallons, offering the necessary

resources for long voyages without frequent refueling stops.

The accommodations are carefully crafted to improve onboard living. The yacht includes two double berths and one twin berth, distributed across two cabins, providing comfortable sleeping arrangements for guests. Additionally, there is one head, ensuring convenience and privacy for everyone on board. These specifications come together to create a vessel that is not only practical but also offers a luxurious and enjoyable experience at sea.

CONTACTS

Shestakov Yacht Sales is a brokerage company specializing in the sale and service of yachts worldwide. The company offers services for buying and selling both new and used motor yachts, sailing vessels, and luxury superyachts. They also provide yacht registration, insurance, technical maintenance, crew selection, and charter organization services across the U.S., Canada, Latin America, the Caribbean, and the Bahamas.

The founder and lead broker of the company is Andrey Shestakov, a licensed and certified expert with extensive experience in marine engineering and shipbuilding.

The company has an extensive network of partnerships with major yacht manufacturers worldwide and provides services in multiple languages, including Russian, Ukrainian, Spanish, and English. The office is in Dania Beach, Florida, USA.

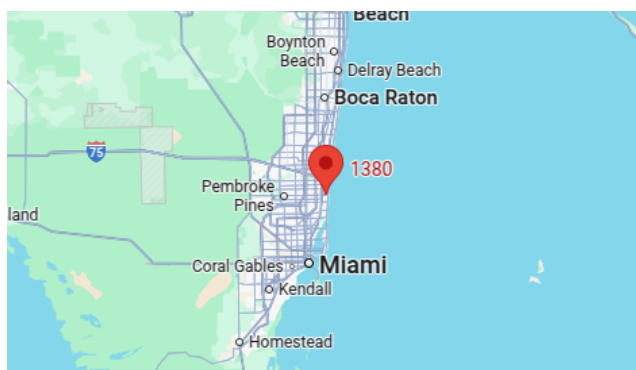
For more information and to view available yachts, you can visit the company's official website: <https://shestakovyachtsales.com>

Contact details

Phone: +1(954)274-4435

Email: andrey@shestakovyachtsales.com

Address



1380 Weeping Willow Way, Hollywood,
Florida 33019