



IRISH MIST 11 - NAVIGATOR

Builder: [NAVIGATOR](#)

LOA: 40' 0" (12.19 m)

Year Built: 2003

Beam: 15' 0" (4.57 m)

Model: 3900 Californian

Max Draft: 13' 8" (4.17 m)

Price: \$249,000 USD Subject to change.

Cruising Speed: 10 Knots (11.51 MPH)

[See full listing on our website](#)

Location: Surrey, Canada

Max Speed: 18 Knots (20.71 MPH)

If you would like to buy a yacht **IRISH MIST 11 - NAVIGATOR** or would like help answering any questions concerning purchasing, selling, or chartering a yacht, please call **+1(954)274-4435** or click here on <https://shestakovyachtsales.com>

TABLE OF CONTENTS

OVERVIEW 3

SPECIFICATIONS 4

 Basic Information 4

 Dimensions 4

 Speed, Capacities and Weight 4

 Accommodations 4

 Hull and Deck Information 5

 Engine Information 5

GALLERY 6

DETAILED DESCRIPTION 12

CONTACTS 23

OVERVIEW

IRISH MIST 11 is a 40-foot luxury motor yacht offered for sale, built and launched by Navigator Yachts and delivered to a discerning owner in 2003; her graceful layout sleeps four in two staterooms, while a bespoke salon sofa sleeper furnishes berths for two more, presenting a refined family cruiser equally suited to life aboard along the coast. Please see Other Details below for complete specifications.

SPECIFICATIONS

Basic Information

Category:
Motor yachts

Year Built:
2003

Model Year:
2003

Country:
Canada

Dimensions

LOA:
40' 0" (12.19 m)

Max Draft:
13' 8" (4.17 m)

Beam:
15' 0" (4.57 m)

Speed, Capacities and Weight

Cruise Speed:
10 Knots (11.51 MPH)

Water Capacity:
130 Gallons

Max Speed:
18 Knots (20.71 MPH)

Fuel Capacity:
300 Gallons

Accommodations

Total Heads:
2

Hull and Deck Information

Hull Material:

Fiberglass and Plastic Yachts

Hull Designer:

N/A

Deck Material:

FRP

Interior Designer:

N/A

Hull Configuration:

N/A

Engine Information

Engines:

2

Engine Type:

Inboard

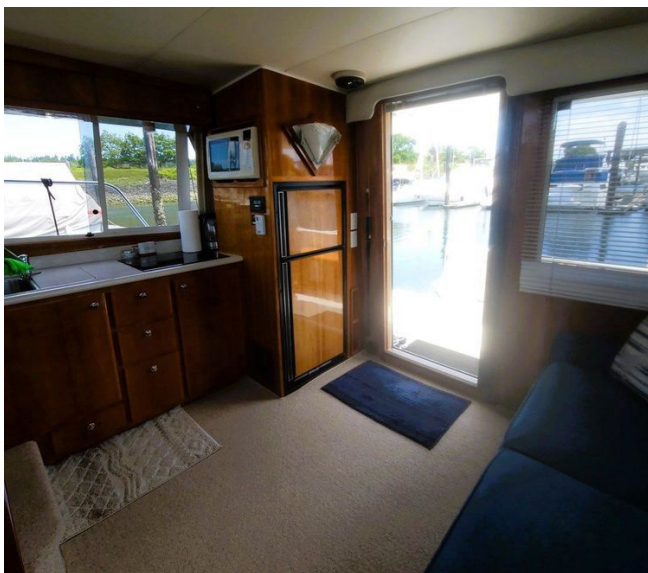
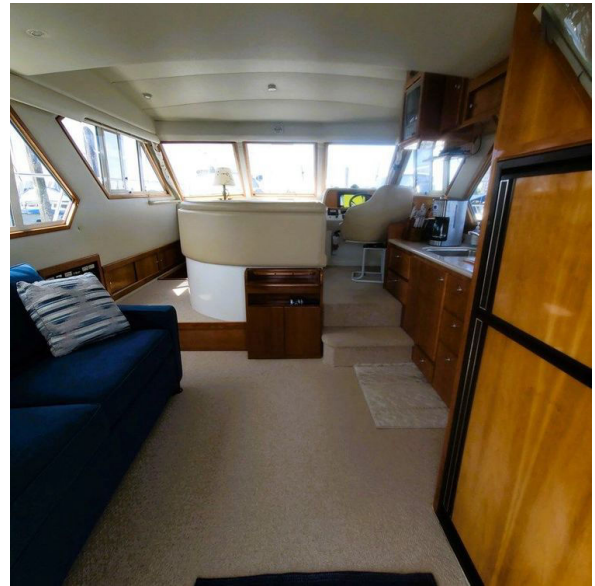
Manufacturer:

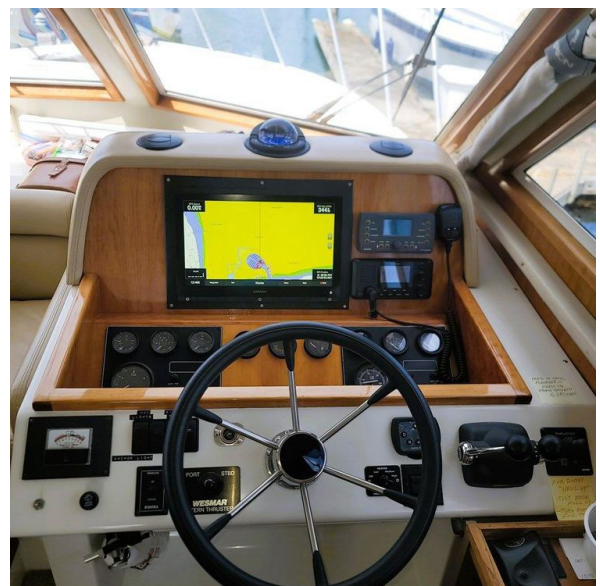
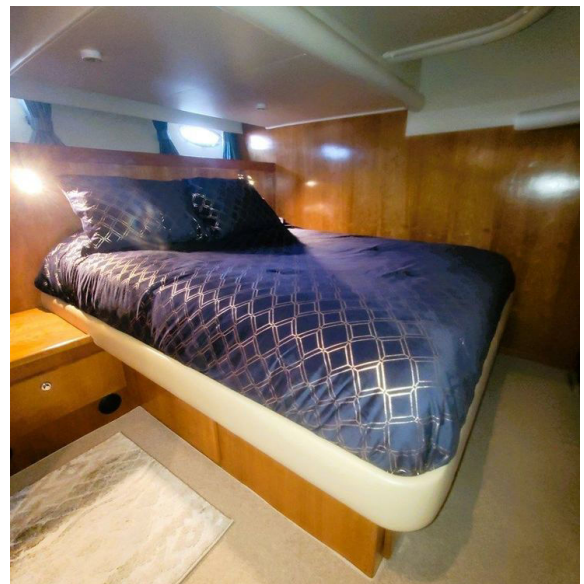
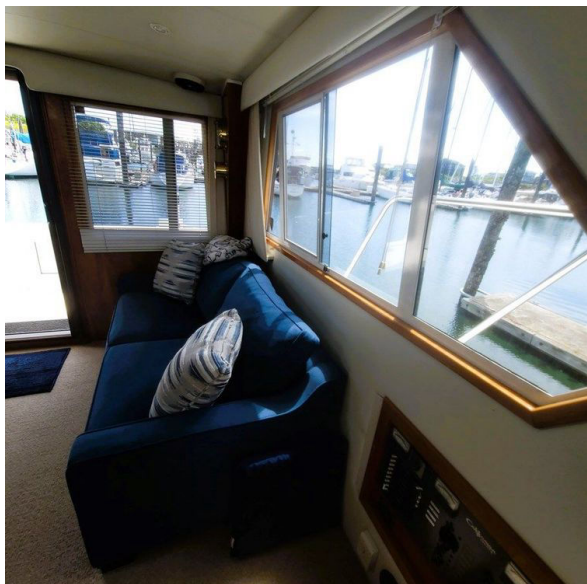
Volvo

Fuel Type:

Diesel

GALLERY













DETAILED DESCRIPTION

Overview

Price Reduction with Strong Value to Stimulate Immediate Sale! IRISH MIST 11 is a triumph of owner-operator design, conceived for adventure, entertaining, and effortless excursions beyond the shoreline, and she arrives with \$218,236 in upgrades and maintenance completed from 2022 through 2026 to deliver immediate confidence and exceptional value. Her three-level layout welcomes you with two serene cabins, each with its own full ensuite featuring a private head, sink with vanity, enclosed shower stall, and generous storage, while the main deck blends salon, galley, dining, and helm into a single luminous social arena wrapped in 360° natural light and open from the aft deck right through to the helm. On the fly bridge, a second helm with a dedicated Captain's chair offers commanding sightlines in every direction, with an aft upholstered L lounge that invites open-air relaxation. Underway, twin Volvo 285 hp marine diesel engines with electronic controls—showing approximately 1450 hours—work in concert with bow and stern thrusters for poised maneuvering, and a Northern Lights electronic generator together with a MagnaSine Magnum inverter system fortify your power autonomy. The electronic suite is anchored by Garmin, while tender duties are mastered by a Bullfrog dinghy with a 20 hp Honda outboard and a SeaWise power davit for swift, secure launch and retrieval. Comfort extends to a full beam Master stateroom with ensuite head, vanity, and an enclosed shower stall, a generous VIP stateroom with its own ensuite head and shower, a salon sleeper sofa for added accommodation, panoramic 360° main deck views, and dual helm chairs at the fly bridge. Recent capital improvements further elevate her readiness: in August 2025 a brand new stern thruster was installed for approximately \$15,000; in October 2025 a brand new ZF port gear was fitted for

approximately \$22,000; and in December 2025 a brand new Northern Lights 6 kW generator and a Victron Energy 3 kW inverter with remote panel were installed for approximately \$54,000—turnkey enhancements that underscore her pedigree and poise.

Additional standard features

Throughout IRISH MIST 11, craftsmanship and thoughtful detailing are immediately apparent in the warm cherry wood interior and custom fabric panels with a soft, sound dampening headliner, while durable, solid surface countertops elevate both the galley and the heads. Underfoot, carpeted flooring flows through the salon, lower helm, and guest accommodations, with practical, hard wearing surfaces in each head. Abundant cabinetry and cleverly designed storage keep provisions and gear neatly stowed, and overhead and task lighting are thoughtfully placed throughout. A molded staircase grants direct, effortless access to the fly bridge from the aft deck, and a hatch in the aft deck opens to the lazarette and the brightly lit engine room. Up top, the expansive fly bridge features a sundeck and upholstered L lounge seating, while raised toe rails around the gunwales enhance the safe side deck walk around. The full beam Master Stateroom is graced with a queen size innerspring mattress, and the lower helm pairs custom upholstered lounge seating with a durable solid surface dining table. The galley is comprehensively equipped with an upright refrigerator/freezer, a three burner cooktop, a microwave oven, and an under counter stainless steel sink with faucet, complemented by ample drawer and cabinet storage. A stereo entertainment center enriches life aboard, and the design weaves together beauty, practicality, and enduring quality.

Walkthrough

From the moment you step aboard and sense the breadth of her 15' beam and open deck areas, the luxury, quality, and performance of this Navigator Yacht are undeniable. Boarding from the stern, the Bullfrog tender awaits with a 20 hp Honda outboard, secured on a SeaWise stainless steel power davit for confident launching and retrieval. The aft deck presents an open area perfect for deck chairs, with below deck access via a hatch to the lazarette and a well lit engine room. Entering the salon through the full size opening door, you are greeted by a flood of natural light through the abundant 360° view windows. To port, a custom sleeper sofa with décor pillows invites relaxation, while to starboard, the bright, airy galley—with a full suite of amenities and an extensive list of standard features—makes cooking aboard IRISH MIST 11 a daily pleasure. Continuing forward along the starboard side, the fully equipped helm station features a Garmin navigation suite brimming with programmable functionality to tailor your cruising experience. The social heart of the main deck is the custom upholstered U lounge paired with a large solid surface dining table, naturally encouraging conversation and convivial gatherings. Descending below along the port side and forward, the full beam master stateroom becomes your private retreat, complete with an ensuite head and enclosed shower, while the VIP guest stateroom mirrors the sense of welcome with an island pedestal bed, abundant storage, and its own ensuite head and shower. The engine room is reached through a wide hatch in the aft cockpit; this well insulated, brightly lit space provides excellent access to all mechanical and electrical systems, and with twin Volvo 285 hp marine diesels capable of reaching 18 knots, your next destination always feels close at hand. Outside on the main deck, wide side decks lead forward from the aft cockpit to the foredeck, where a Lewmar electric windlass anchors the bow arrangement alongside the anchor, chain, and adjacent foot pedal controls for launching and retrieval. Access to the fly bridge is effortless via molded aft cockpit stairs;

on the fly bridge itself, the forward, centerline helm with Garmin electronics is flanked by two adjustable helm chairs, and aft, an L lounge seating area completes this elevated open air haven.

Salon

The salon welcomes you through a full size cabin entry door into a calm, acoustically softened haven with sound deadening, soft headliner panels and a plush carpeted sole. A custom sleeper sofa with décor pillows provides flexible accommodation and relaxed lounging, while overhead lighting creates an even glow throughout. Power management is thoughtfully centralized with an AC/DC power distribution panel, complemented by a generator remote start and shutdown control and a Magnum Inverter remote panel. Convenience is close at hand with 110V outlets placed for daily life aboard, making the salon a refined and functional centerpiece for downtime and conversation.

Galley

Purpose built for life aboard, the galley features solid surface countertops that balance beauty with resilience, beneath a sound deadening, soft headliner for a tranquil ambiance. Culinary capability is assured with a stainless steel sink and faucet, a gourmet three burner ceramic range, a microwave oven, and an upright refrigerator/freezer, while ample drawers and cupboards keep provisions orderly. Entertainment flows seamlessly with a Fusion stereo enriching the space, as the carpeted sole and thoughtfully placed 110V outlets and overhead lighting round out a galley designed for both extended cruising and effortless everyday use.

Dining area

At the heart of the main deck's social flow, an upholstered U shaped settee embraces a generous solid surface dining table, transforming mealtimes into relaxed, convivial occasions. The space benefits from sound deadening, soft headliner panels to keep conversation intimate, with a carpeted sole underfoot for comfort, conveniently placed 110V outlets, and well judged overhead lighting that sets a welcoming tone from breakfast through to nightcaps.

Lower helm

Command comes naturally at the lower helm, where a supportive helm chair faces intuitive ignitions and shutdown controls, Volvo electronic engine controls, a clear instrument cluster, and dedicated switches for navigation and anchor lights. Precision maneuvering falls easily to thruster controls, while situational awareness is elevated by a Garmin GMR 24 XHD radome feeding a Garmin GPSMAP 8616XSV display at the lower helm, alongside a Garmin VHF 215 AIS marine radio and a traditional compass. The stainless steel, soft grip ship's wheel feels reassuring in hand, with wiper system, windlass, and trim tab controls within effortless reach. Electrical oversight is comprehensive with a Magnum Inverter remote panel, a 240VAC/120VAC monitoring panel, and a 24VDC/12VDC monitoring panel, while a Jensen DVD/CD/MP3 player and dual stainless steel trumpet horn control add both pleasure and presence. Overhead lighting completes a helm designed for clarity and confidence.

Master stateroom

A private entrance opens to the full beam master stateroom, where a custom queen mattress with bespoke bedding and pillows promises restorative sleep. Thoughtful storage abounds with drawers under the berth and ample hanging

lockers and dressers, while hull port lights usher in gentle daylight. The ensuite head features an enclosed shower for unhurried refreshment, and the sound deadening, soft headliner panels together with a carpeted sole, conveniently located 110V outlets, and overhead lighting create a serene, indulgent retreat.

Master head

The master head is appointed for daily ease and comfort with a toilet, an enclosed shower compartment, a sink with faucet, and a well sized mirror, complemented by a towel bar, handy 110V outlets, and practical overhead lighting, ensuring function never compromises refinement.

VIP stateroom

The VIP stateroom offers a private entrance to a bright, welcoming space where an island berth with a custom mattress, tailored bedding, and pillows takes center stage. Drawer storage beneath the bed and ample hanging lockers and drawers ensure tidy organization, while the private ensuite head adds coveted autonomy. Soft, sound deadening headliner panels, a carpeted sole, 110V outlets, and overhead lighting complete this gracious guest haven.

VIP stateroom/guest head

Convenience and comfort define the VIP/guest head, fitted with a toilet, enclosed shower compartment, sink with faucet, mirror, and towel bar, along with 110V outlets and overhead lighting, ensuring guests enjoy a private, well equipped space.

Aft cockpit & swim step

A locking cabin entry door connects the aft cockpit to the salon, where a warm welcome awaits, while a ship's bell and cockpit light add both tradition and practicality. A wide hatch provides direct access to the lazarette and engine room, and molded steps lead comfortably to the side decks and up to the bridge. A secure transom gate completes the arrangement, seamlessly linking the cockpit to the swim step for effortless waterside living.

Flybridge & upper helm

The fly bridge is an elevated sanctuary where command and comfort converge: two adjustable helm chairs face intuitive ignitions and shutdown controls, Volvo electronic engine controls, thruster controls, a clear instrument cluster, and switches for navigation and anchor lights. Navigation is centered on a Garmin GPSMAP 8612XSV display with radar, paired with a Garmin VHF 215 AIS marine radio and a compass, while the stainless steel, soft grip ship's wheel brings tactile assurance. With windlass and trim tab controls close to hand, a dual stainless steel trumpet horn command at the ready, overhead lights set into the arch for nighttime clarity, an aft L lounge for relaxed conversation, and a bimini top to temper the sun, the fly bridge becomes a favored destination in its own right.

Engine room & mechanical

Beneath the decks, engineering excellence includes twin Volvo 285 hp marine diesel engines driving through Volvo gearboxes and a direct drive shaft system to stainless steel shafts, with Hynautic steering and electric/hydraulic trim tabs delivering precise control. Shipboard power is assured by a Northern Lights generator and a MagnaSine Magnum inverter, supported by batteries

with convenient battery system switches. Fuel is polished through a Racor fuel/water separator system and stored in aluminum fuel tanks, while a fresh water pressure system and a Seaward 11 gallon hot water tank provide domestic comfort. Ventilation is optimized by 24 VDC fan forced air, and safety is paramount with four 12VDC bilge pumps in the lazarette fitted with float switches and a high water alarm. An oil change system simplifies maintenance, and a large tool chest keeps critical equipment close at hand, forming a mechanical space that is bright, accessible, and purpose built for reliability.

Tender & davit

Ready for shore runs and exploration, the Bullfrog tender is outfitted with a 20 hp Honda outboard and guided by a Garmin 4" display, while the SeaWise stainless steel power davit system ensures swift, secure launch and recovery, turning every anchorage into an invitation to roam.

Exclusions

All personal property is excluded unless specifically identified and included in the sale agreement and listing specifications. Personal property encompasses all items not permanently attached to the vessel, including but not limited to artwork, furnishings, and recreational or entertainment items. While advertisements, marketing materials, and photography may depict the vessel with personal property, such items are excluded unless expressly included as provided in the listing and purchase documents.

Disclaimer

The details of this vessel are offered in good faith, but accuracy and the

vessel's condition are not guaranteed or warranted. Buyers are encouraged to instruct their agents or surveyors to investigate particulars they wish to have verified. This vessel remains subject to prior sale, price change, or withdrawal without notice.

New upgrades

A suite of recent upgrades underscores IRISH MIST 11's turnkey readiness and modern capability, beginning with new bow and stern thrusters that transform close quarters handling. Propulsion and shipboard power were further strengthened with a new port ZF gear and a Northern Lights 6 kW generator, complemented by a Victron Energy 3 kW inverter with remote panel to harmonize AC/DC demands. Navigation and communications were comprehensively elevated with a Garmin N2K NMEA backbone, a Garmin GMR 24 XHD radome, a Garmin GPSMAP 8616XSV at the lower helm, a Garmin GPSMAP 8612XSV at the fly bridge helm, a Garmin GT23M TH thru hull MT Chirp transducer, and two Garmin VHF 215 AIS marine radios, together with a new compass and a 4" Garmin in the tender. The Bullfrog dinghy also received navigation lights along with both automatic and manual bilge pumps for added safety. In July 2025 IRISH MIST 11 was hauled, her bottom washed, and new zincs installed; in August 2025 a new stern thruster was installed. Electrical reserves were refreshed with four MCA 6V 420 AH L16 AGM batteries, comfort was renewed with fresh carpeting throughout and a custom salon sleeper sofa, and galley prowess sharpened with a new three burner cooktop and a garbage disposal. Presence underway is punctuated by a stainless dual trumpet horn, entertainment flows from a Fusion MS RA70NSX AM/FM/Bluetooth MRP with speakers, safety is enhanced by new carbon monoxide alarms, and instrumentation clarity is secured with two new instrument panels and two tachometers, while a spare 50A x 50' shore power cord and upgraded light fixtures round out a thoughtful program. Custom

mattresses, bespoke bedding, and décor pillows crown the interior with tailored luxury.

Maintenance and upgrades

Maintenance and Upgrades 2022 — \$90,885: The vessel's modernization began with the installation of a Garmin N2K system and a NMEA network backbone cable, twin VHF marine radios, an AIS 800 transceiver, a GMR 24 XHD radome, a GPSMAP 8616XSV display at the lower helm, a GPSMAP 8612XSV display at the fly bridge helm, and a GT23M TH thru hull mounted Chirp transducer. IRISH MIST 11 received bottom paint in April 2022, new zinc anodes, and the 10' aluminum tender was also bottom painted, with the outboard trim unit repaired. A 4" Garmin was installed on the tender along with a new battery, a new steering kit, and new lights. A new bow thruster with controls at both helms was fitted, and four new MCA 6V 420AH L16 AGM batteries were installed. A new compass joined the helm, and new instrument clusters and tachometers were fitted for the port side of both helms. New carbon monoxide monitors were installed, an engine ball valve and two V belts were replaced, and most hoses and clamps were renewed. The galley gained a new 120V three burner cooktop, custom carpet was installed, and a new custom sofa sleeper arrived in the salon. The Master Stateroom benefited from a new queen mattress and bespoke bedding, while lines, fenders, life vests, visual distress signals, and fire extinguishers refreshed safety and seamanship gear. New speakers and a Fusion MS RA70NSX AM/FM/Bluetooth stereo system were installed, a spare 50' 125V shore power cord was added, and various lights in the salon, galley, fly bridge, staterooms, and heads were replaced.

Maintenance 2023 — \$25,887: Reliability was furthered by replacing the port and starboard main engine oil coolers, a port side oil pressure sending unit, and the starboard engine starter motor. The drive shaft packless

system was adjusted, engine mounts were replaced, and the main engine seacocks were serviced with hoses replaced, alongside a new generator seacock and hose. The tender's bilge pump was also replaced.

Maintenance

2024 — \$3,942: Coolers were serviced with RidLyme, the connection to the starboard gear cooler was repaired and a new cooler hose installed, one engine room light fixture was rewired and the other replaced with new bulbs installed, and the Master Stateroom light was repaired and replaced. The head sink drain hose was repaired, the dual trumpet horn was replaced, the guest head shower water supply elbow was replaced, and the stern thruster solenoid was renewed.

Maintenance and Upgrades 2025 — \$97,522: The vessel was hauled, her bottom cleaned, and zinc anodes replaced, with barnacles ground off the props, trim tabs, and rudders. A new stern thruster with controls at both helms was installed, and a new automatic/manual aft bilge pump with float switch was fitted. The Bullfrog dinghy outboard was serviced with a new starter solenoid, and the tender propeller was replaced. Major capital enhancements included a new ZF Marine port gear, a new Northern Lights 6 kW generator, and a new Victron Energy 3 kW inverter with remote panel, culminating a thorough and proactive stewardship program.

CONTACTS

Shestakov Yacht Sales is a brokerage company specializing in the sale and service of yachts worldwide. The company offers services for buying and selling both new and used motor yachts, sailing vessels, and luxury superyachts. They also provide yacht registration, insurance, technical maintenance, crew selection, and charter organization services across the U.S., Canada, Latin America, the Caribbean, and the Bahamas.

The founder and lead broker of the company is Andrey Shestakov, a licensed and certified expert with extensive experience in marine engineering and shipbuilding.

The company has an extensive network of partnerships with major yacht manufacturers worldwide and provides services in multiple languages, including Russian, Ukrainian, Spanish, and English. The office is in Dania Beach, Florida, USA.

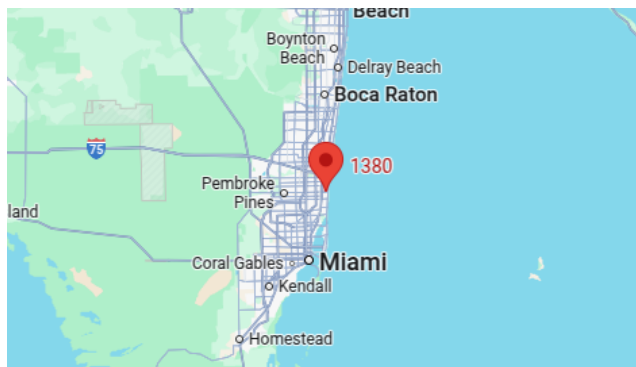
For more information and to view available yachts, you can visit the company's official website: <https://shestakovyachtsales.com>

Contact details

Phone: +1(954)274-4435

Email: andrey@shestakovyachtsales.com

Address



1380 Weeping Willow Way, Hollywood,
Florida 33019