

LA MARCE - RIVIERA AUSTRALIA



Builder: [RIVIERA AUSTRALIA](#)

LOA: 40' 0" (12.19 m)

Year Built: 2002

Beam: 14' 0" (4.55 m)

Model: Convertible

Max Draft: 13' 1" (4 m)

Price: \$225,000 USD Subject to change.

Cruising Speed: 24 Knots (27.62 MPH)

[See full listing on our website](#)

Location: Miami, United States

Max Speed: 30 Knots (34.52 MPH)

TABLE OF CONTENTS

OVERVIEW 3

SPECIFICATIONS 5

 Basic Information 5

 Dimensions 5

 Speed, Capacities and Weight 5

 Hull and Deck Information 6

 Engine Information 6

GALLERY 7

DETAILED DESCRIPTION 11

CONTACTS 20

OVERVIEW

Experience Unparalleled Luxury on the Water: 2002 40 ft Yacht Available

Welcome aboard this exquisite 2002 yacht, a true masterpiece in the realm of luxury boating, currently situated in the United States. With its sleek and refined design, this 40 ft vessel seamlessly combines performance with elegance, making it an ideal option for those seeking a yacht that promises unforgettable moments on the water.

Featuring a modified V-hull, this yacht glides smoothly through the waves, achieving a cruising speed of 24 knots and a top speed of 30 knots. Driven by two powerful Caterpillar inboard engines, this vessel is not only a feat of engineering but also a testament to the lasting quality of fiberglass and plastic yachts. The generous 15 ft beam ensures stability and comfort, allowing you to savor every moment on board.

As you explore the yacht, you'll be enchanted by its meticulously designed interior, offering a perfect haven for relaxation and entertainment. With a water capacity of 120 gallons and a fuel capacity of 473 gallons, your adventures can extend for days, whether cruising along the coast or anchoring in a secluded cove.

The deck, constructed from durable fiberglass, provides ample space for sunbathing, socializing, or simply enjoying the stunning views. Picture hosting friends and family for a sunset dinner on the water, with the gentle sound of waves against the hull and the sky awash in shades of orange and pink.

This yacht is more than just a vessel; it embodies a lifestyle. With its luxurious features and outstanding performance, it stands out in the competitive yacht market. If you're exploring yacht sales in the current boat location, this exceptional yacht is a must-see.

Seize the chance to own this remarkable 2002 yacht, where every detail has

been carefully crafted for your pleasure. Whether you're a seasoned sailor or a first-time buyer, this yacht offers the perfect blend of luxury, comfort, and performance. Embrace the freedom of the open sea and make this yacht yours today!

SPECIFICATIONS

Basic Information

Category:
Motor yachts

Year Built:
2002

Sub category:
Sport Fisherman

Country:
United States

Model Year:
2002

Dimensions

LOA:
40' 0" (12.19 m)

Max Draft:
13' 1" (4 m)

Beam:
14' 0" (4.55 m)

Speed, Capacities and Weight

Cruise Speed:
24 Knots (27.62 MPH)

Water Capacity:
120 Gallons

Max Speed:
30 Knots (34.52 MPH)

Fuel Capacity:
473 Gallons

Hull and Deck Information

Hull Material:

Fiberglass and Plastic Yachts

Hull Designer:

N/A

Deck Material:

Fiberglass

Interior Designer:

N/A

Hull Configuration:

Modified V-Hull

Engine Information

Engines:

2

Engine Type:

Inboard

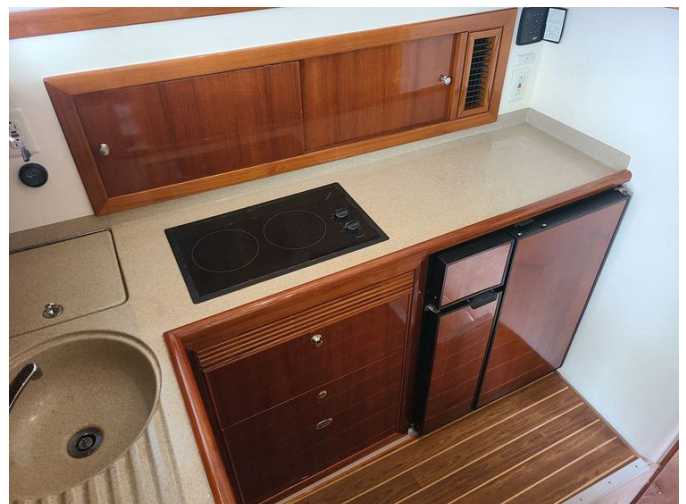
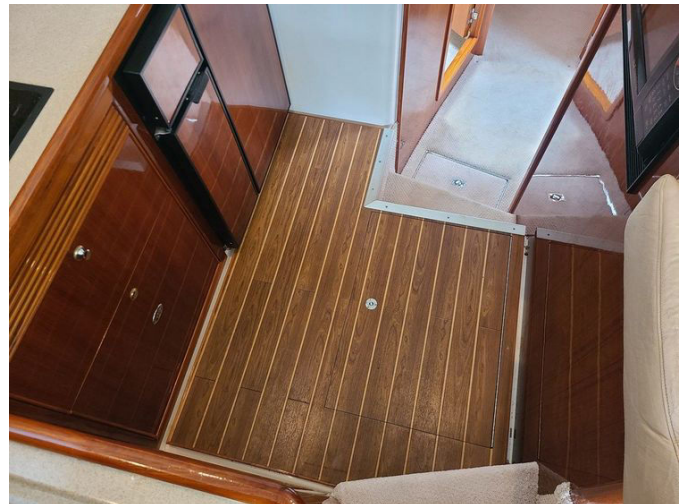
Manufacturer:

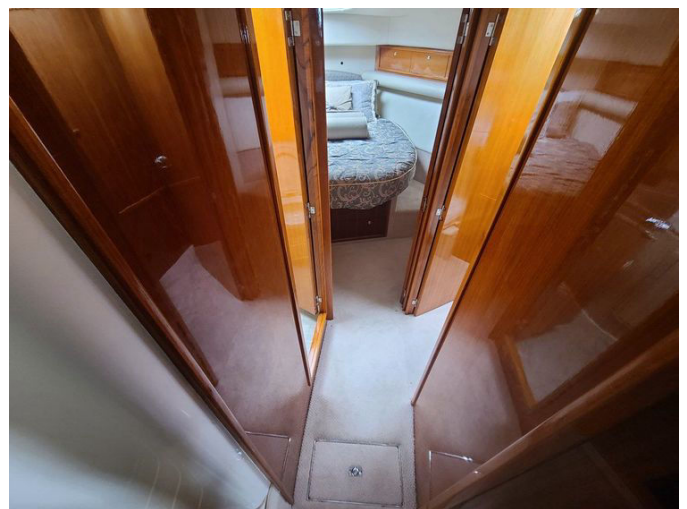
Caterpillar

Fuel Type:

Diesel

GALLERY









DETAILED DESCRIPTION

Accommodations

The yacht features a meticulously crafted two-stateroom configuration that guarantees both comfort and seclusion for its occupants. At the forefront, the master stateroom serves as a tranquil haven, complete with a convenient door that leads directly to the head and shower, offering an en-suite experience. On the starboard side, the guest stateroom is ingeniously designed with an upper and lower bunk, as well as a fold-down sleeper that can comfortably host up to three guests. This arrangement is ideal for families or groups of friends traveling together. Just behind the guest stateroom, a washer and dryer provide a touch of home-like convenience to your voyage. The head is strategically positioned on the port side, featuring a full stall shower with dual access from both the hallway and the master stateroom, ensuring ease of use for everyone on board. This layout is optimized to enhance space and functionality, making it a perfect choice for long journeys or relaxing weekend escapes.

Cockpit

The cockpit of this yacht is a paradise for fishing aficionados and those who value meticulous design. It includes an in-deck fish box with a macerator pump, ensuring your catch is stored neatly and efficiently. The transom is equipped with a built-in livewell, ideal for keeping bait fresh and ready for use. For serious anglers, the generous tackle storage offers a dedicated area for all your equipment, while the freezer box maintains your supplies at the perfect temperature. Rod holders are thoughtfully positioned to provide convenience and easy access during fishing trips. Moreover, the cockpit is crafted with practicality in mind, featuring an engine access door for straightforward

maintenance and a cockpit sink for quick clean-ups. This blend of features makes the cockpit not only highly functional but also a joy to use, whether you're spending a day fishing or simply enjoying the open sea.

Electronics

The yacht features a cutting-edge electronics suite that guarantees both security and pleasure while at sea. Central to this system are the newly installed Garmin 8416XSV and Garmin 8412 GPSMap displays, both added in February 2023, offering advanced navigation capabilities and sharp visuals. Enhancing these displays is the Garmin GMR424XHD2, a robust 4KW radar system also installed in February 2023, which boosts situational awareness and ensures safe travel even in tough conditions. For emergencies, the ACR 2831 EPIRB, another new addition from February 2023, provides peace of mind with its dependable distress signaling. The Simrad autopilot system alleviates the burden of long voyages by keeping a steady course, while the Standard Horizon VHF radio ensures clear communication at all times. To elevate the onboard experience, the Fusion sound system delivers superior audio quality, making every journey more enjoyable. This all-encompassing electronics package is crafted to offer the pinnacle of navigation, safety, and entertainment.

Salon

The salon of this yacht seamlessly combines opulence and practicality, offering a chic and comfortable living area on the water. On the port side, an L-shaped leather settee provides plush seating and includes a pull-out berth and ottoman, making it adaptable for relaxation or extra sleeping space. To starboard, the L-shaped leather dinette and table create a cozy dining nook, with handy storage beneath for all your necessities. The entertainment system

is enhanced by an AM/FM stereo, complete with a cassette player, CD player, amplifier, subwoofer, and four speakers, delivering premium sound throughout the salon.

Built-in storage lockers provide ample room to keep the space organized, while the overhead electronics console adds a modern touch. Roman blinds gracefully cover the side and rear windows, offering privacy and light control. The entertainment center is strategically positioned on the lower dash, ensuring easy access. The salon's aesthetic is further elevated by a vinyl-covered headliner and upholstered valances, which complement the high-gloss teak wood finishes.

For added convenience, the salon features an icemaker and both 110VAC and 12DC lighting, offering flexibility and ambiance. The climate is maintained comfortably with the newly installed Cruisair reverse cycle AC, added in August 2023, ensuring a pleasant atmosphere in any weather. The main electrical panel, accommodating both 12VDC and 120VAC, is thoughtfully integrated, highlighting the salon's blend of elegance and functionality.

Fishing equipment

This yacht is a paradise for fishing enthusiasts, outfitted with premium fishing gear crafted to elevate your angling adventures. The double spreader outriggers are a highlight, allowing you to troll multiple lines effortlessly, thereby boosting your chances of a successful catch. Central to the fishing setup is the release fighting chair, providing both comfort and stability when battling large fish. Strategically positioned rod holders ensure your fishing rods are always accessible and ready for action.

The livewell is a crucial feature, keeping your bait lively and fresh, while the in-deck fish box offers generous space to store your daily catch. Rounding out this impressive collection of fishing equipment is the tackle center, which provides organized storage for all your fishing accessories, ensuring everything

you need is within easy reach. This comprehensive fishing gear package is designed to deliver an unmatched fishing experience, making every trip on the water both productive and enjoyable.

Master stateroom

The master stateroom of this yacht is a haven of comfort and sophistication, crafted to offer a peaceful escape on the water. At its heart is a queen walk-around berth, equipped with an innerspring mattress that ensures a restful night's sleep. The berth is enhanced by an upholstered headboard, adding a layer of elegance to the room's decor. Practicality is well-considered, with generous storage space beneath the berth, complete with drawers to keep your belongings neatly organized and easily accessible.

A hanging locker, fitted with a light and 12vDC LED lighting, provides additional storage for clothing and personal items, ensuring everything is in its place. The climate in the stateroom is expertly managed by the newly installed Cruisair reverse cycle AC, added in August 2023, which maintains a comfortable atmosphere regardless of the weather outside. This master stateroom is thoughtfully designed to blend luxury with practicality, making it an ideal space for relaxation and rejuvenation during your yachting journeys.

Guest stateroom

The guest stateroom on this yacht is crafted with both comfort and functionality in mind, creating a welcoming retreat for visitors. It includes three single berths, each thoughtfully designed with storage beneath, offering plenty of room to store personal items and maintain a tidy space. A hanging locker with an integrated light provides extra storage for clothing, ensuring guests have everything they need for a pleasant stay.

The stateroom is fitted with a newly installed Cruisair reverse cycle AC, added

in August 2023, allowing guests to enjoy a perfectly regulated climate no matter the weather outside. The room is lit by 12vDC LED lighting, which creates a cozy and inviting ambiance. This guest stateroom is a perfect blend of practicality and comfort, ensuring that guests feel at home during their stay on the yacht.

Master head

The master head of this yacht exemplifies luxury and practicality, providing a private and well-equipped area for personal care. It includes a vanity with a seamless Grancoat top, offering a sleek and resilient surface that is both elegant and easy to maintain. The Vacu Flush fresh water head ensures smooth and dependable operation, enhancing the convenience of this space. A shower stall with a glass partition provides a contemporary and spacious area for rejuvenation, while the 12VDC lighting creates a bright and welcoming ambiance.

For additional convenience, the master head is fitted with an automatic sump pump and an exhaust fan, ensuring the area remains dry and well-ventilated. The climate is expertly managed by the newly installed Cruisair reverse cycle AC, added in August 2023, ensuring comfort in any weather. The master head also includes a private entrance door and an ensuite door to the forward cabin, providing easy access and privacy. This carefully designed space merges elegance with functionality, making it an integral part of the yacht's luxurious accommodations.

Galley

The galley of this yacht is a fully equipped culinary haven, crafted to fulfill all your cooking requirements while at sea. It includes a Nova Kool refrigerator, slated for installation in October 2024, to keep your provisions fresh and

chilled. The galley also features a microwave and a two-burner stove top, both scheduled for installation in October 2024, offering flexible cooking options for meal preparation. The Amtico high-quality vinyl flooring not only adds a touch of sophistication but is also robust and easy to maintain, making it perfect for a marine setting.

The galley is outfitted with a Cranicoat countertop and sink, complete with a handy garbage bin, ensuring that meal prep and clean-up are efficient and orderly. An exhaust fan is installed to keep the atmosphere fresh by eliminating cooking odors and steam. The overhead LED lighting, compatible with both 12v DC and AC, brightly illuminates the area, making it easy to work in any lighting conditions.

There is ample storage, with cabinets and drawers providing space for all your kitchen essentials, while a large storage compartment in the floor offers additional room for larger items. This galley is thoughtfully designed to blend functionality with elegance, ensuring that cooking on board is a delightful experience.

Electrical equipment

The electrical equipment on this yacht is crafted to deliver dependable and efficient power management, ensuring the seamless operation of all onboard systems. The configuration includes four sturdy batteries, supported by a battery parallel system to boost power availability and reliability. A comprehensive bonding system, complete with transom zinc and shaft brushes, is integrated with a galvanic isolator to guard against corrosion and ensure the durability of the yacht's metal components.

At the core of the electrical system is the control center, featuring backlit AC/DC thermal and magnetic circuit breakers, along with volt meters and an amp meter, allowing for precise monitoring and control of the yacht's electrical functions. The electrical panels are designed with circuit protection to prevent

overload and fault currents, providing an extra layer of safety.

Powering the yacht's electrical demands is an Onan EQD 11.5kw generator, equipped with a muffler and currently at 2930 hours of operation. This generator ensures a consistent power supply, allowing you to enjoy all the onboard comforts and amenities without interruption. This expertly engineered electrical system is a testament to the yacht's dedication to safety, efficiency, and reliability.

Fly bridge

The fly bridge of this yacht is a brilliantly crafted area that merges comfort, practicality, and cutting-edge technology, making it perfect for both relaxation and navigation. At the front, you'll discover L-shaped lounge seating to starboard, paired with a full-length seat on the port side, offering plenty of room for guests to unwind and take in the view. Beneath the port lounge seat, convenient rod storage ensures fishing gear is always easily accessible. A spacious storage compartment in the brow provides extra room for essentials. The fly bridge is fitted with a bilge pump warning light on the dash, enhancing safety by alerting you to any potential issues. Navigation is simplified with a compass and Caterpillar digital displays, while the flybridge dash cover shields the instruments from the elements. A new Isotherm refrigerator keeps drinks cool, and a hot and cold tap sink adds convenience for entertaining. The area is brightly lit with 12vDC LED lights, creating a welcoming ambiance.

For smooth and responsive handling, the fly bridge includes hydraulic steering and Twin Disc control, along with Bennett trim tab controls for optimal performance. The GRP hardtop offers shade and protection, while powder-coated tubes add a touch of elegance. The fly bridge is also equipped with a comprehensive electronics suite, ensuring all necessary tools for navigation and communication are readily available. This thoughtfully designed fly bridge is a perfect blend of luxury and functionality, enhancing the overall

yachting experience.

Deck equipment

The deck equipment on this yacht is meticulously crafted to boost both functionality and convenience, ensuring a smooth experience on the water. At the heart of this arrangement is the davit, which offers a dependable and efficient way to manage tenders or other heavy gear, simplifying their launch and retrieval as needed. Complementing the davit are the tender brackets, which securely hold the tender in place during transit, ensuring safety and stability even in choppy waters.

The windlass is another crucial element of the deck equipment, providing effortless anchor management. It enables smooth and controlled deployment and retrieval of the anchor, minimizing physical effort and enhancing overall safety. This well-coordinated deck equipment package ensures that all deck operations are executed with ease and precision, contributing to a more enjoyable and stress-free yachting experience.

Engine room

The engine room of this yacht exemplifies meticulous upkeep and superior engineering, guaranteeing dependable performance and peace of mind for any journey. At its heart are the twin Caterpillar 3126 engines, each with 2500 operational hours, which have undergone thorough servicing with a complete 1000-hour service conducted in August 2023. This extensive maintenance ensures the engines are in peak condition, ready to deliver power and efficiency.

Beyond engine care, the yacht has been upgraded with new AC units as of August 2023, enhancing onboard comfort. The engine room also includes new engine seacocks and a new generator seacock, both installed in February 2023,

along with all new intake water hoses, ensuring the cooling systems' integrity and reliability. An oil change pump and a battery charger are provided to facilitate routine maintenance and keep the electrical systems charged and ready.

The engine room features dripless shafts, which minimize maintenance needs and boost efficiency. All new bilge pumps were installed in May 2023, enhancing safety by efficiently removing any excess water. The generator has also been fully serviced in August 2023, ensuring smooth and reliable operation. This well-maintained engine room is crafted to provide seamless operation and peace of mind, making it a crucial component of the yacht's overall performance and reliability.

CONTACTS

Shestakov Yacht Sales is a brokerage company specializing in the sale and service of yachts worldwide. The company offers services for buying and selling both new and used motor yachts, sailing vessels, and luxury superyachts. They also provide yacht registration, insurance, technical maintenance, crew selection, and charter organization services across the U.S., Canada, Latin America, the Caribbean, and the Bahamas.

The founder and lead broker of the company is Andrey Shestakov, a licensed and certified expert with extensive experience in marine engineering and shipbuilding.

The company has an extensive network of partnerships with major yacht manufacturers worldwide and provides services in multiple languages, including Russian, Ukrainian, Spanish, and English. The office is in Dania Beach, Florida, USA.

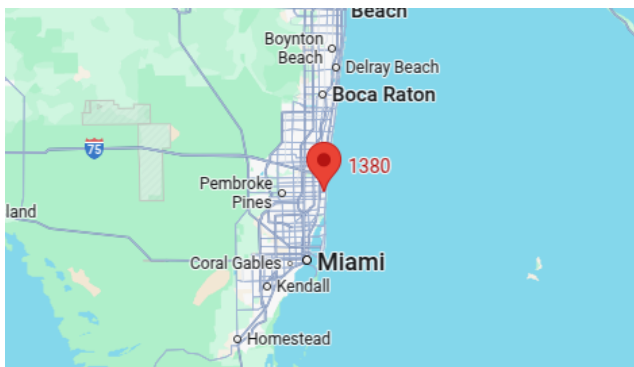
For more information and to view available yachts, you can visit the company's official website: <https://shestakovyachtsales.com>

Contact details

Phone: +1(954)274-4435

Email: andrey@shestakovyachtsales.com

Address



1380 Weeping Willow Way, Hollywood,
Florida 33019